

---

## 7. Level 2 Repair

---

### 7-1. Components on the Rear Case



[tamiraat.com](http://tamiraat.com) منبع مقاله


## 7. Level 2 Repair

### 7-2. Pre-requisite

	
<b>Tweezers / Disass'y Stick / Screw Driver</b>	<b>Anti-static Gloves</b>
	
<b>Anti-static Mat</b>	<b>AOD for Tablet</b>
	
<b>Ethyl Alcohol</b>	<b>Cotton Swab</b>

## 7. Level 2 Repair

### 7-3. Parts which must be changed after repair

BOM Description & part code	Image	Remarks
<b>Backglass Outside tape</b> <a href="#">[GH02-19465A]</a>		<b>Left items must be changed to the new one in case of disassemble the Back glass.</b>

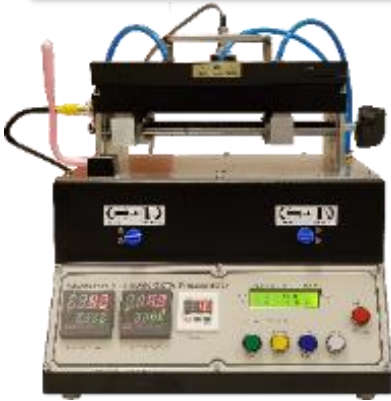


## 7. Level 2 Repair

### 7-4. Disassembly

1

- 1) Put the device in the AOD jig.  
Set the AOD condition
  - SOC 68%↓: Upper 70°C/ Lower 60°C 5min
  - SOC 68%↑: Upper 60°C/ Lower 60°C 5min
- 2) Disassemble the OCTA using the AOD.



2

Remove Rear Cover.

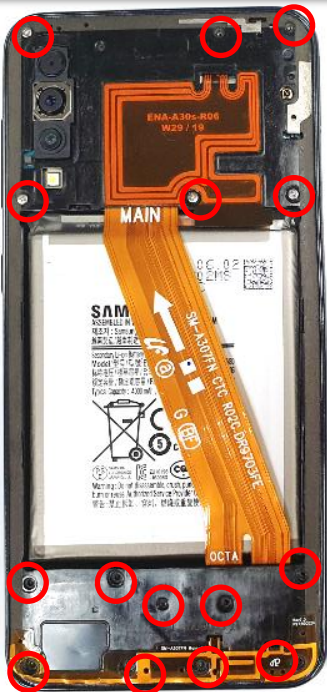


※ Caution  
Be care of scratch.

※ Caution  
Be care of scratch.

3

Remove all 14 points of Rear Screws.



※ Caution  
Be care of Rear damage.

4

Remove 1 PBA screw.



※ Caution  
Be careful not to damage the PBA.

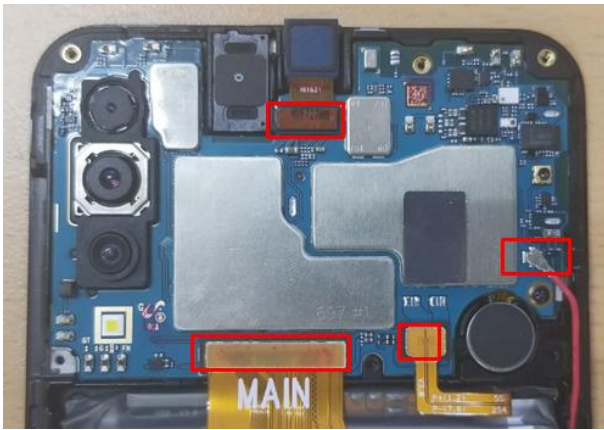
Confidential and proprietary-the contents in this service guide subject to change without prior notice

Distribution, transmission, or infringement of any content or data from this document without Samsung's written authorization is strictly prohibited.

## 7. Level 2 Repair

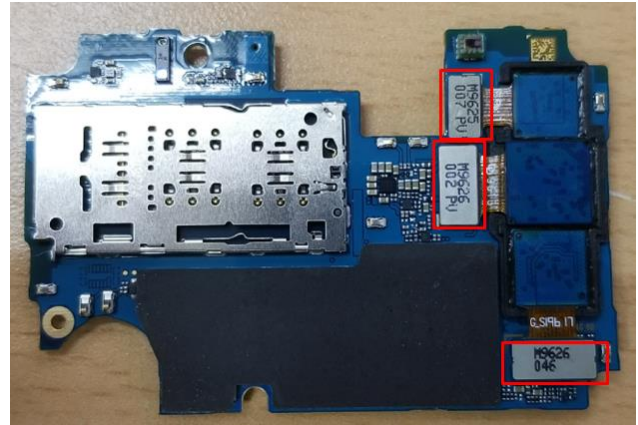
5

Remove the PBA and C to C FPCB and Batt Conn and Red COAXIAL CABLE And VT Camera.



6

Remove CAM connectors.



※ **Caution**

Be care of several kinds of damage at PBA and FPCB.

※ **Caution**

Be careful not to damage the Camera Module.

7

Detach RCV from Front Ass'y.



※ **Caution**

Be careful not to damage the RCV.

8

Detach Motor from Front Ass'y.



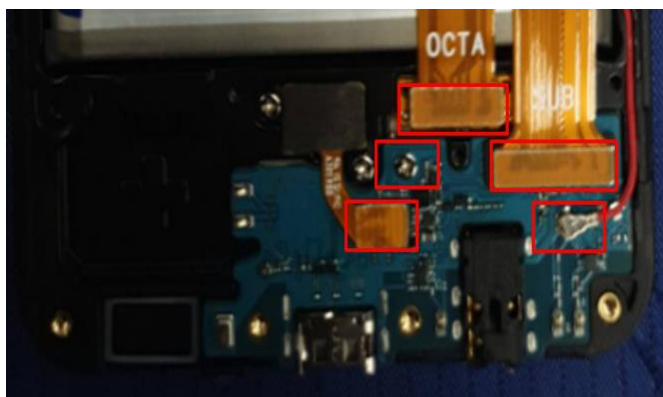
※ **Caution**

Be careful not to damage the Motor.

## 7. Level 2 Repair

9

Remove C to C FPCB Red COAXIAL CABLE and SUB PBA screw.



10

Detach the Sub PBA.



※ **Caution**

- 1) Be careful not to damage the C to C FPCB and Red COAXIAL CABLE.
- 2) Be careful not to damage the PBA

※ **Caution**

Be careful not to damage the Sub PBA

11

Detach SPK from Rear Ass'y.



※ **Caution**

Be careful not to damage the SPK



[tamiraat.com](http://tamiraat.com) منبع مقاله

Confidential and proprietary-the contents in this service guide subject to change without prior notice

Distribution, transmission, or infringement of any content or data from this document without Samsung's written authorization is strictly prohibited.

## 7. Level 2 Repair

### 7-5. Assembly

1

Attach SPK on Rear Ass'y.



※ **Caution**  
Be care of SPK damage.

2

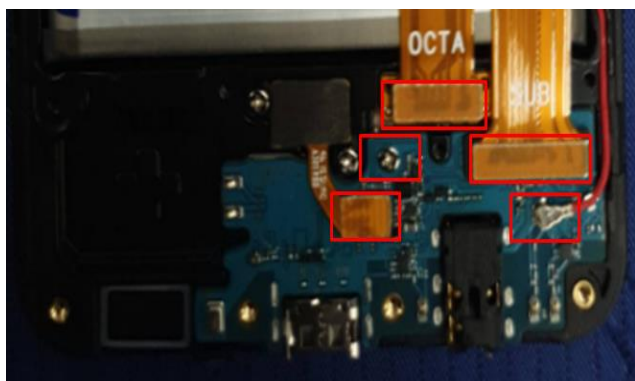
Attach Sub PBA on Front Ass'y.



※ **Caution**  
Be care of Sub PBA damage.

3

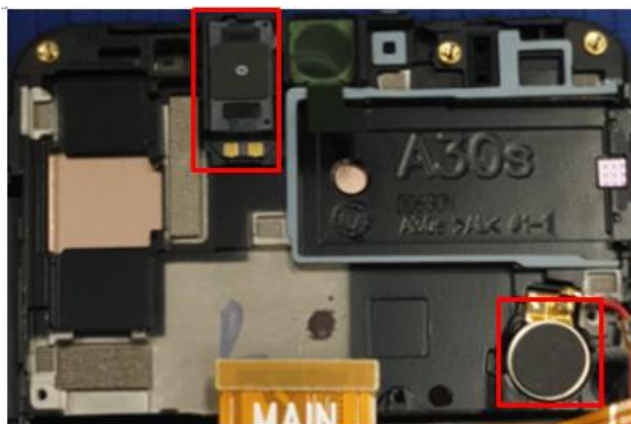
Remove C to C FPCB Red COAXIAL CABLE  
and SUB PBA screw insertion 1 Point.  
\* Torque Value : 0.95 ±7%



※ **Caution**  
1) Be careful not to damage the C to C FPCB and Red COAXIAL CABLE.  
2) Be careful not to damage the PBA

4

Attach Motor and Receiver in upper area.

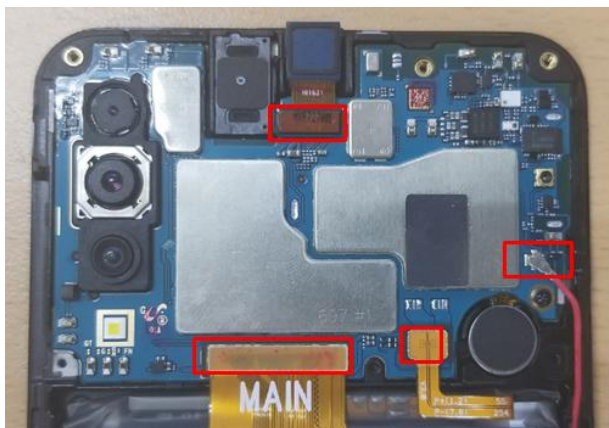


※ **Caution**  
1) Be care of scratch CAM lens.  
2) Be care of damage each part.

## 7. Level 2 Repair

5

Assemble the PBA and C to C FPCB and Batt Conn and Red COAXIAL CABLE and VT Camera.



6

Screw insertion 1 Point.  
\* Torque Value :  $0.95 \pm 7\%$



※ Caution

Check for each connector connection.

※ Caution

Be care of PBA damage.

7

Assemble Rear and screw insertion 1 point.  
\* Torque Value :  $1.2 \pm 7\%$

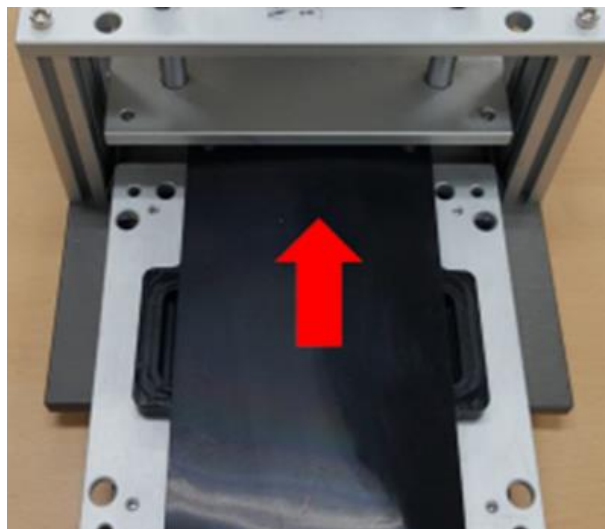


※ Caution

Be care of PBA damage.

8

Press Back Glass.  
Pressing force : 1 N  
Pressing time : 1 minute



※ Caution

Be care of scratch Rear cover.