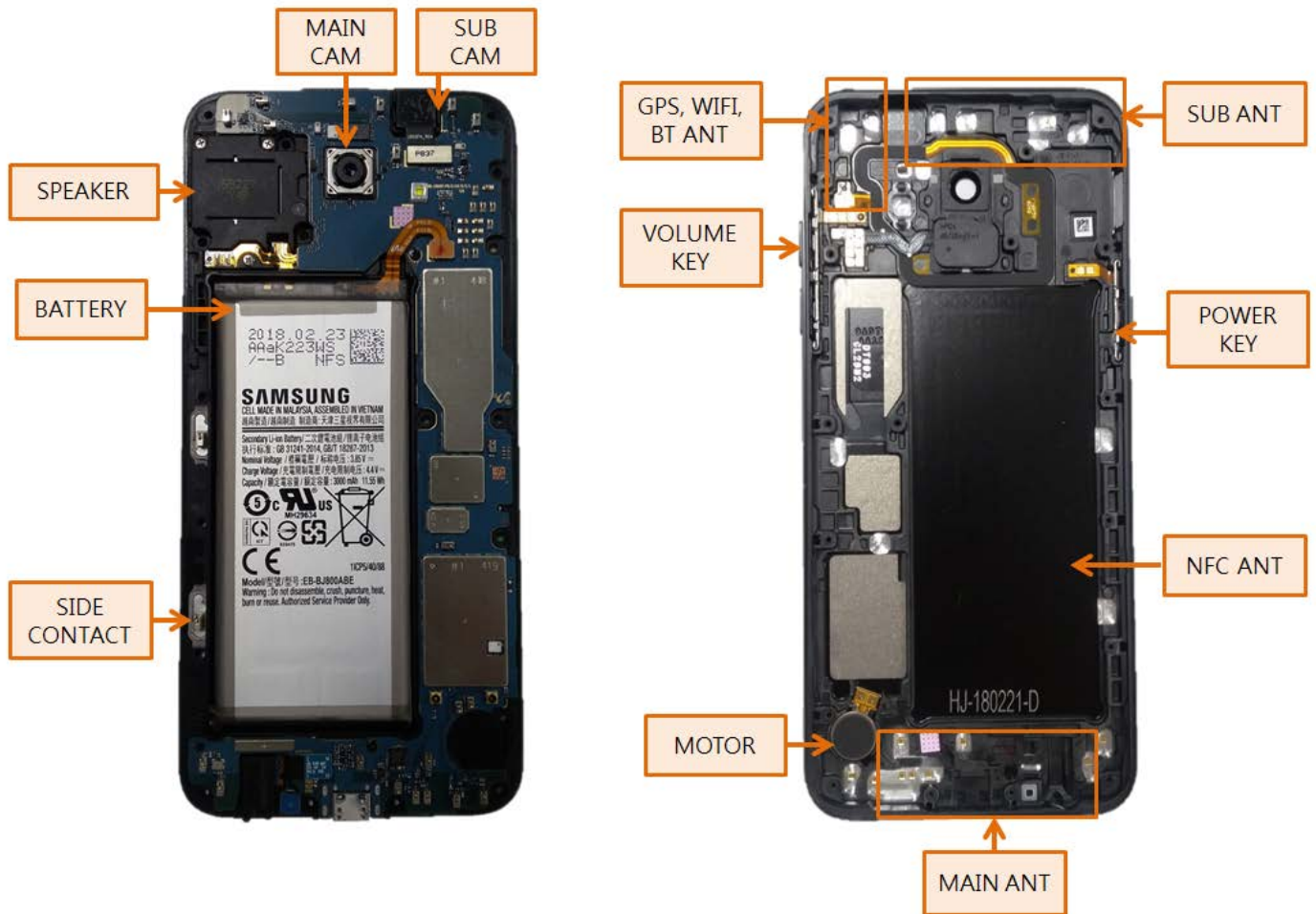


## 7. Level 2 Repair

### 7-1. Components on the Rear Case



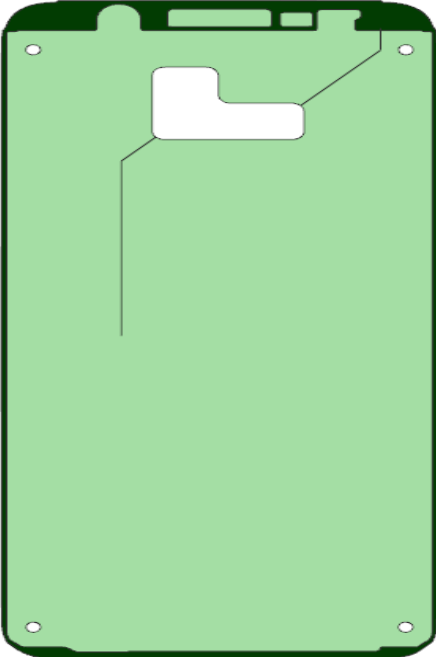
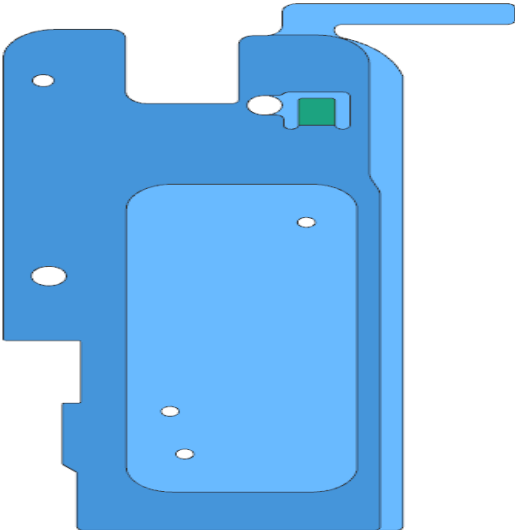
## 7. Level 2 Repair

### 7-2. Pre-requisite

	
<b>Tweezers / Disass'y Stick / Screw Driver</b>	<b>Anti-static Gloves</b>
	
<b>Anti-static Mat</b>	<b>Hot Plate</b>
	
<b>A OCTA Disassembly Holder</b>	<b>OCTA Disassembly Upper</b>
	
<b>Ethyl Alcohol</b>	<b>Cotton Swab</b>

## 7. Level 2 Repair

### 7-3. Parts which must be changed after repair

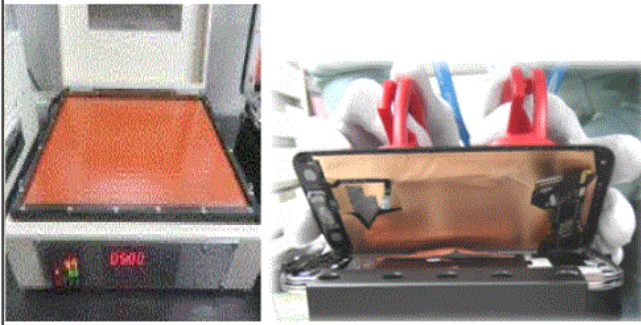
BOM description & Part Code	Image	Remarks
<p>Main Window Rework Tape [GH81-15599A]</p>	 A green rectangular rework tape with a white cutout at the top and four small white circles at the corners.	<p>Replace for OCTA TA</p>
<p>HR Tape [GH02-16527A]</p>	 A blue irregularly shaped rework tape with a central white cutout and several small white circles.	

## 7. Level 2 Repair

### 7-4. Disassembly

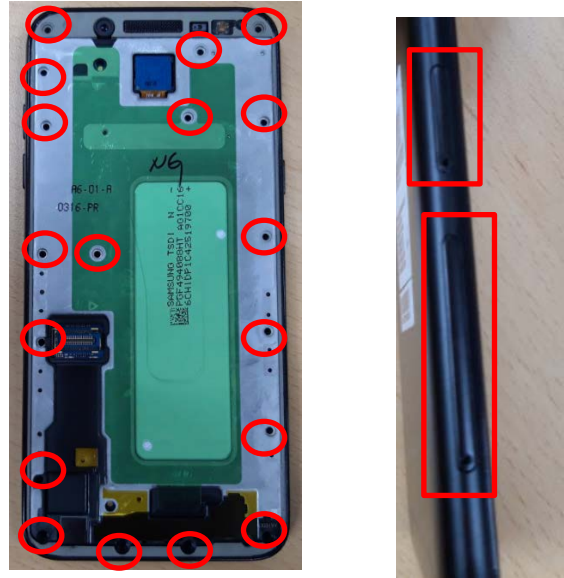
1

- 1) Put the device in the chamber or hot plate  
As following below heating condition  
- SOC 68%↓: 70°C/10~20min  
- SOC 68%↑: 60°C/10~20min  
※ Please confirm the heating condition released lastly, and follow it.



2

- Disassemble SIM Tray 1,2 from device.  
Unscrew 18 Points.



※ Caution

- 1) Be careful not to damage set and OCTA.

※ Caution

- 1) Be care of scratch and molding damage.

3

- Disassemble the REAR.



※ Caution

- 1) Be care of damage to components.

4

- Unscrew 2 Points of PBA and disassemble  
Earjack / Battery connector.



※ Caution

- 1) Be careful not to damage the PBA.

## 7. Level 2 Repair

5

Disassemble PBA / Front.

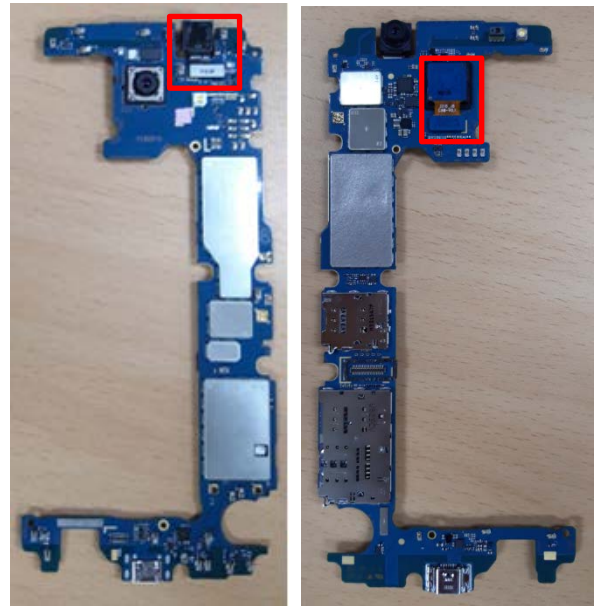


※ Caution

1) Be careful not to damage the PBA.

6

Disassemble Front & Rear Camera.



※ Caution

1) Be care of FPCB damage.

7

Unscrew 3 points.  
Disassemble Speaker.



※ Caution

1) Be careful not to damage the speaker.



Confidential and proprietary-the contents in this service guide subject to change without prior notice

Distribution, transmission, or infringement of any content or data from this document without Samsung's written authorization is strictly prohibited.

## 7. Level 2 Repair

### 7-5. Assembly

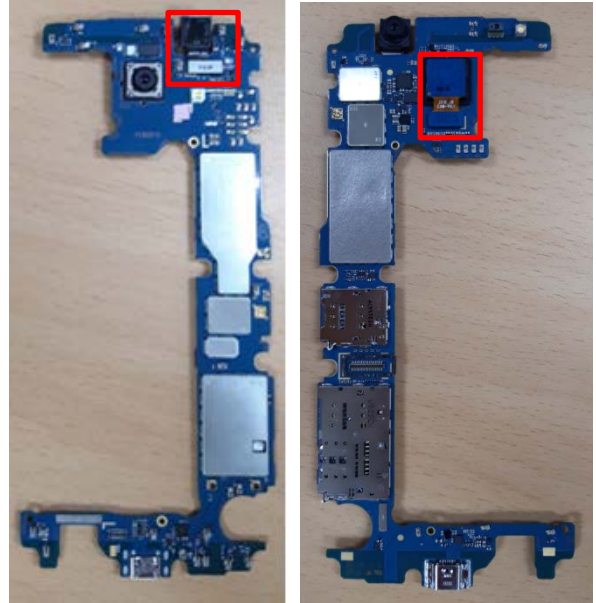
1

Assemble speaker in Front.  
Screw 3 points.  
Torque : 1.0 Kgf·cm±7%, 1.4\*2.5



2

Assemble Front & Rear Camera.



※ Caution

1) Be careful not to damage the speaker.

※ Caution

1) Be care of FPCB damage.

3

Assemble PBA on Front.  
Attach Earjack and Battery Connector.



※ Caution

1) Be care of FPCB damage.

4

Screw 2 points of the PBA.  
Torque : 1.0 Kgf·cm±7%, 1.4\*2.5



※ Caution

1) Be careful not to damage the PBA.

## 7. Level 2 Repair

5

Assemble Front assy on REAR vertically.



6

Screw 18 points of the Front.  
Torque : 0.9 Kgf-cm±7%, 1.6\*3.7



※ Caution

1) Be careful not to damage PBA.

※ Caution

1) Be care of scratch and molding damage

7

Change Main window rework tape and HR tape.



8

Assemble OCTA connector and connector cover and Attach OCTA.



※ Caution

1) Be careful not to damage the OCTA.

※ Caution

1) Be careful not to damage the OCTA.

## 7. Level 2 Repair

9

Press set using OCTA pressure jig.

- Force : 1N

- Time : 1minute

※ Please conform the pressing condition released lastly and follow it



※ **Caution**

1) Please confirm the pressing condition released lastly, and follow it.