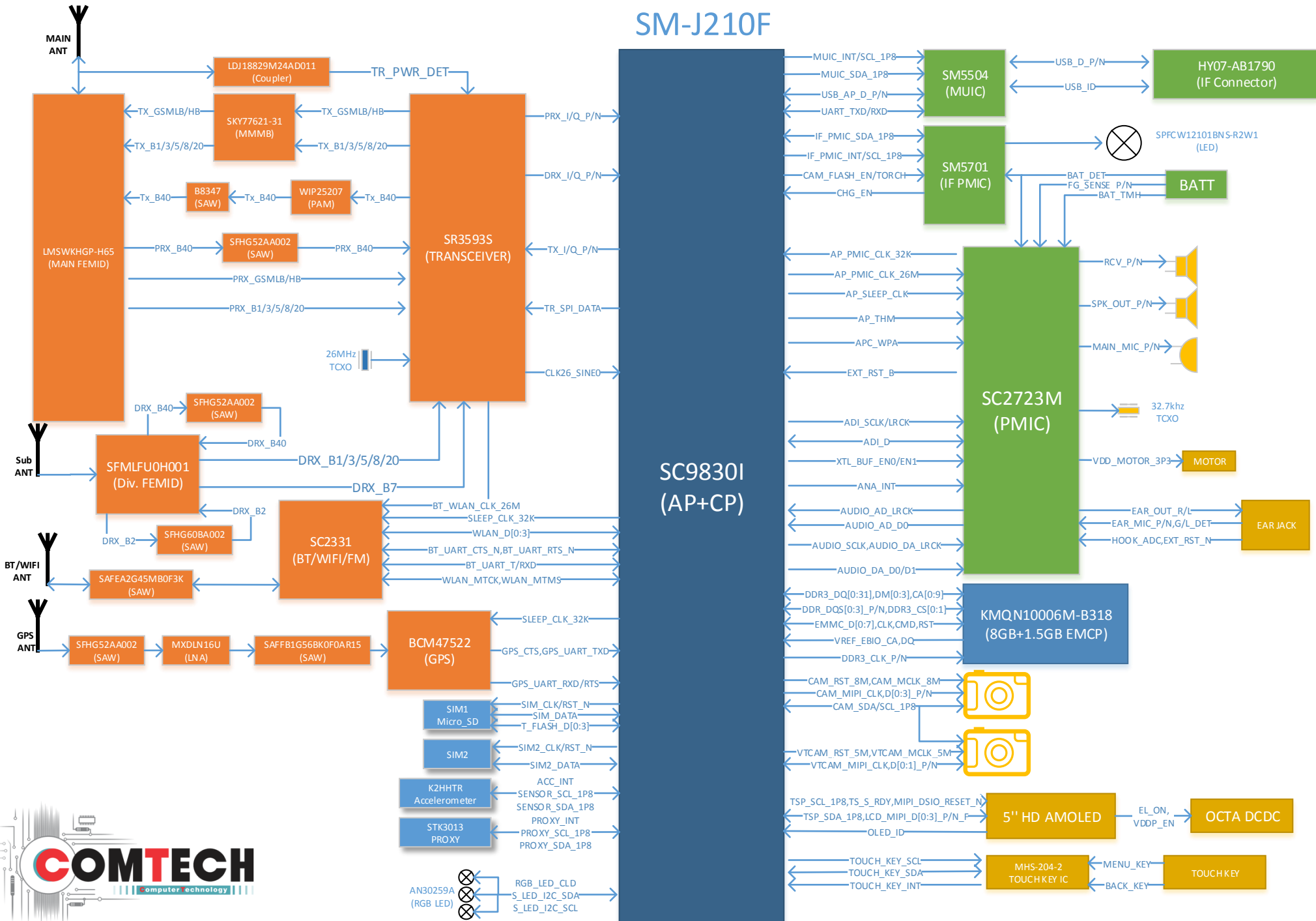
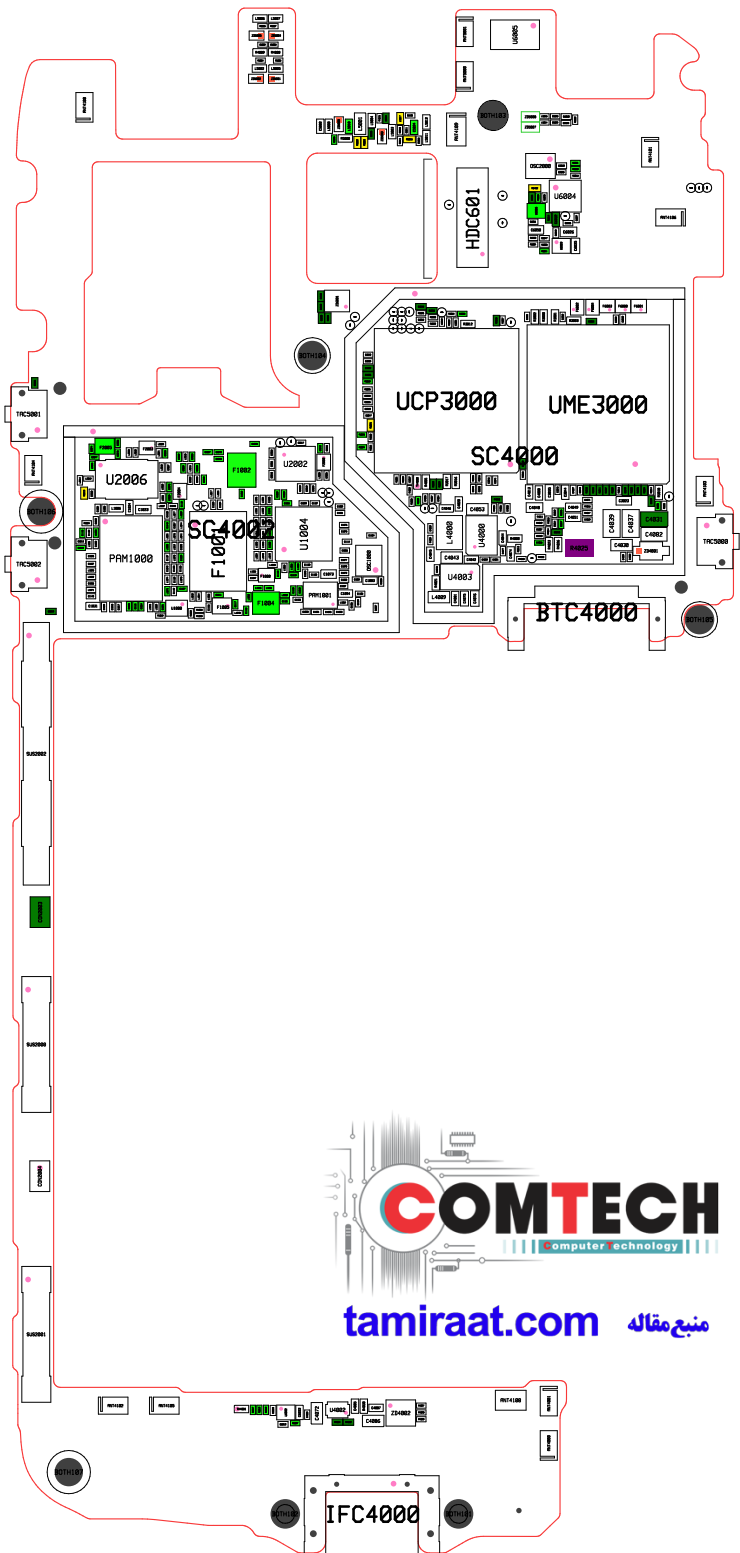
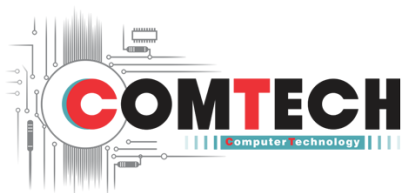
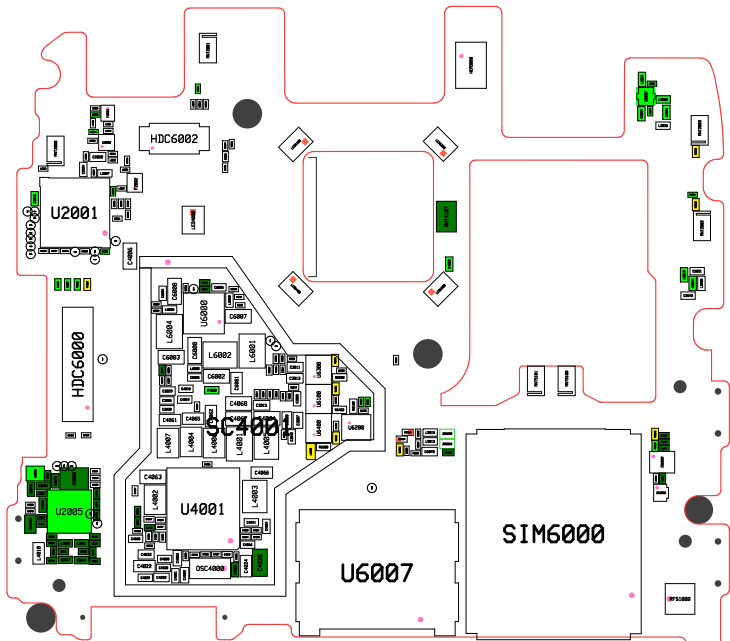


Block Diagram SM-J210F

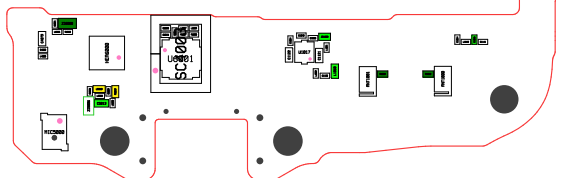




tamiraat.com منبع مقاله




tamiraat.com منبع مقاله



8. Level 3 Repair

8-3. Flow Chart of Troubleshooting

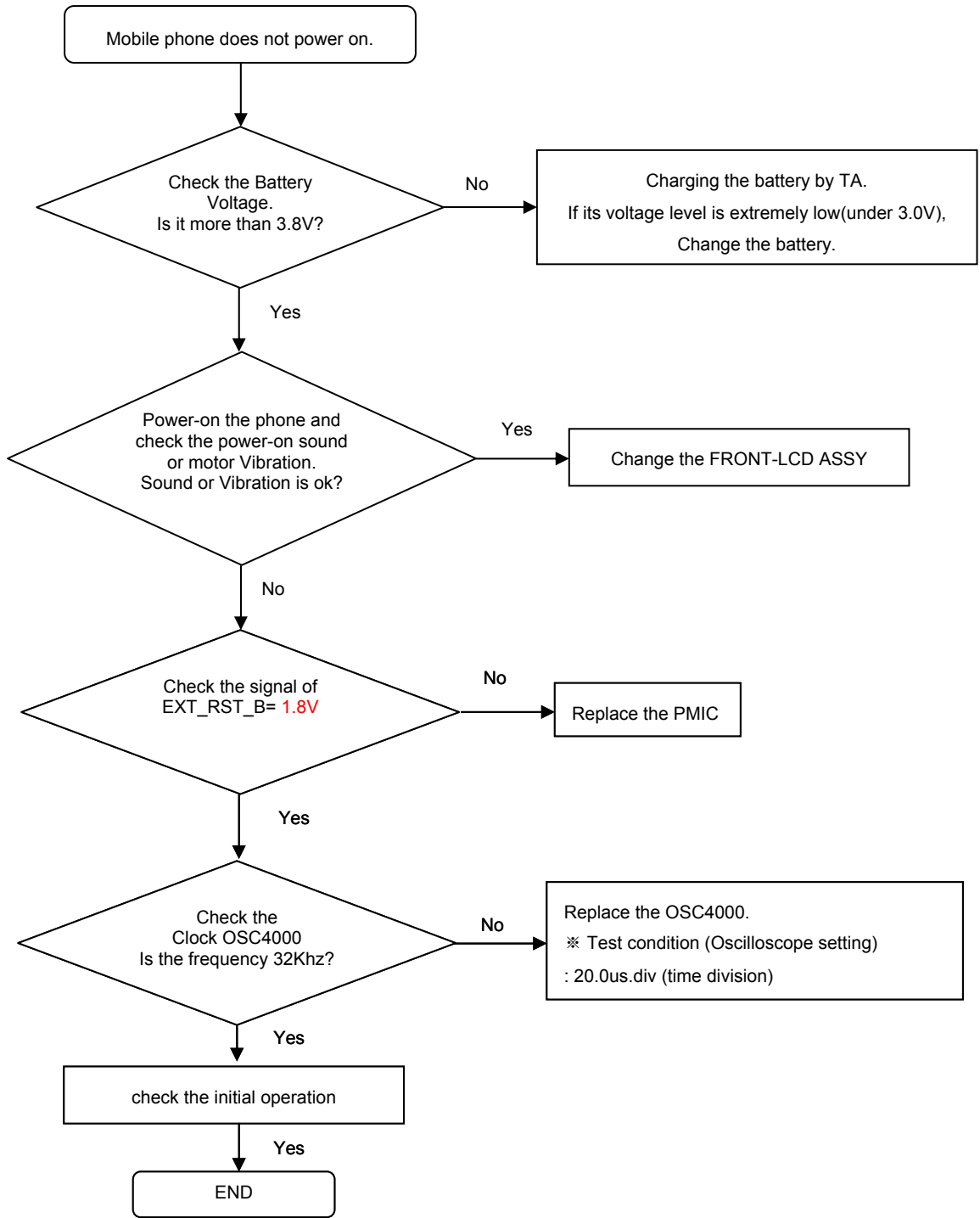
	
<p>Oscilloscope</p>	<p>Digital Multimeter</p>
	
<p>Power Supply</p>	<p>+ driver, ESD Safe Tweezer</p>
	
<p>8960 & Spectrum Analyzer</p>	<p>Soldering iron</p>

Confidential and proprietary-the contents in this service guide subject to change without prior notice

Distribution, transmission, or infringement of any content or data from this document without Samsung's written authorization is strictly prohibited.

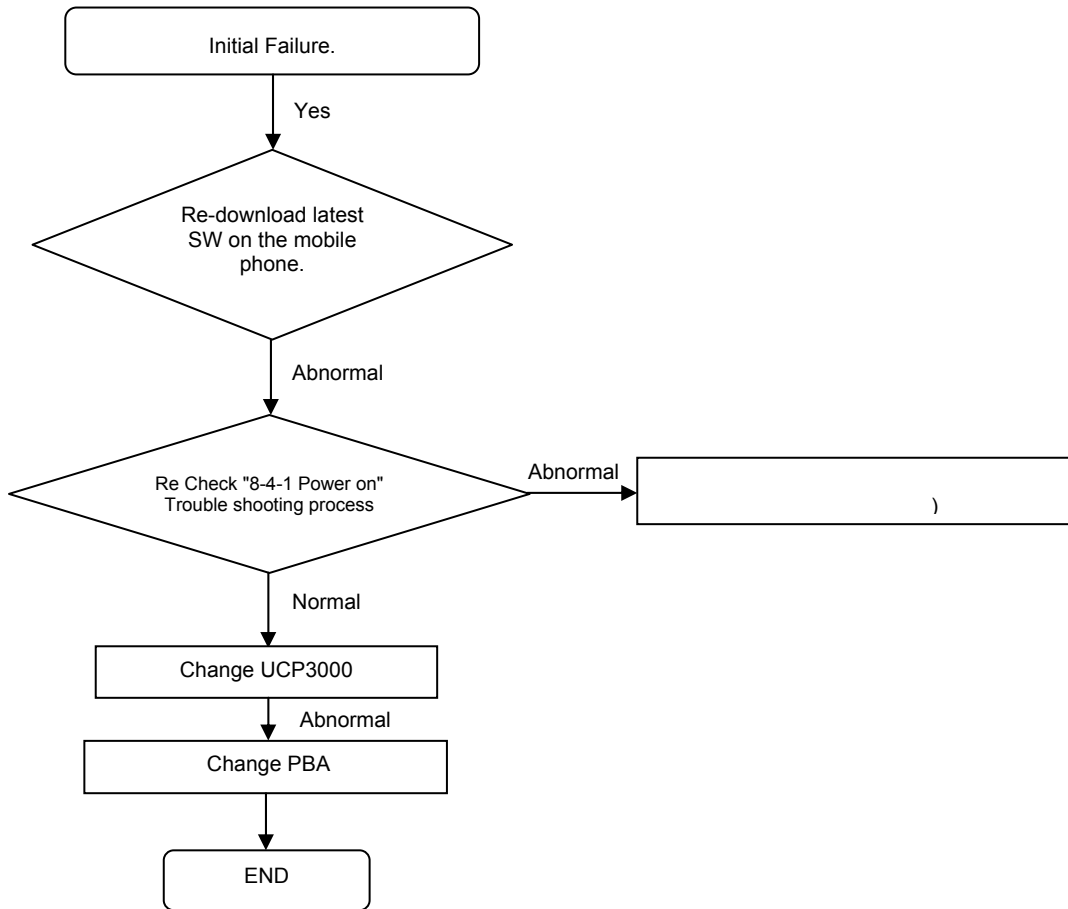
8. Level 3 Repair

8-4-1. Power On



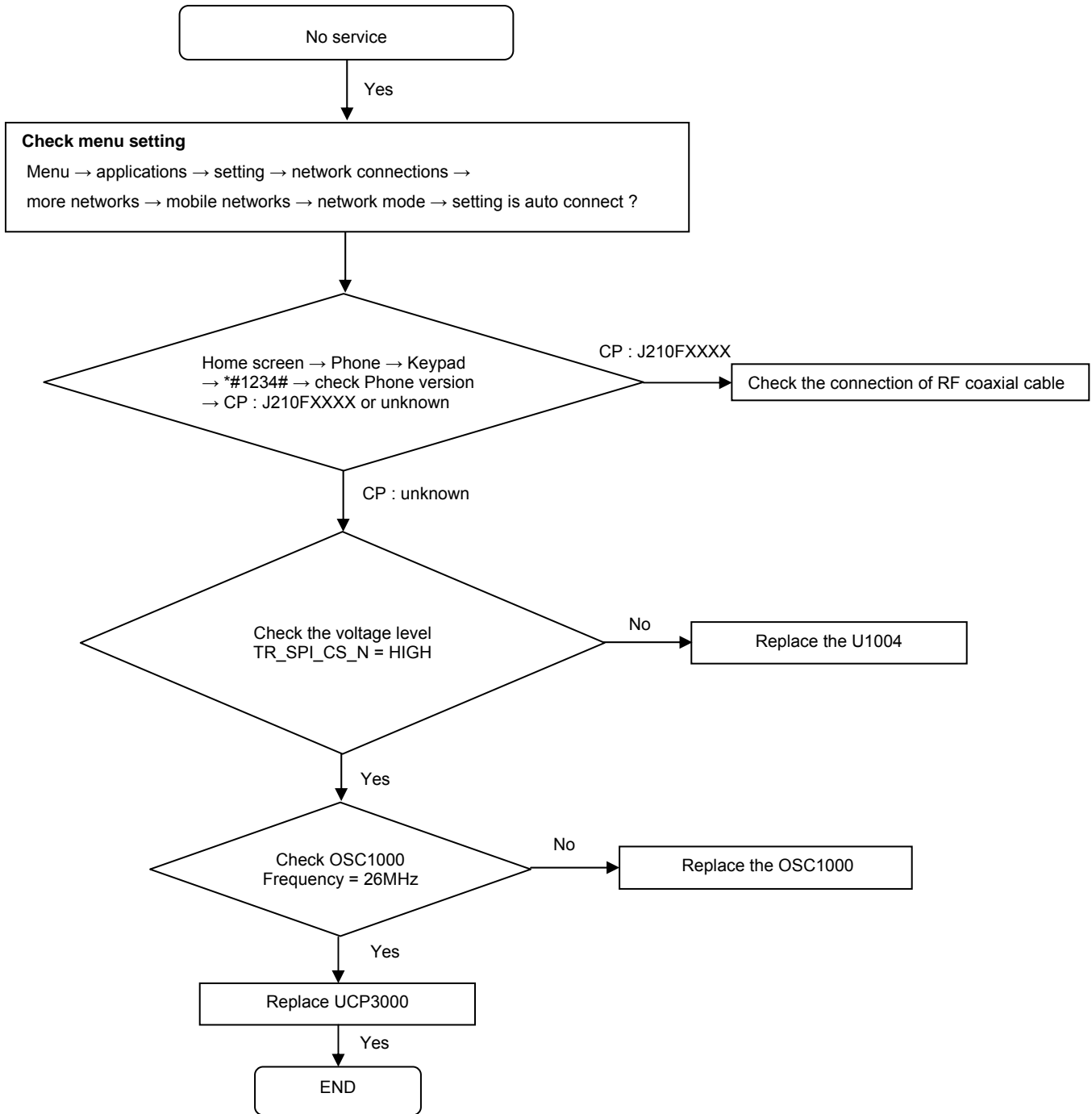
8. Level 3 Repair

8-4-2. Initial



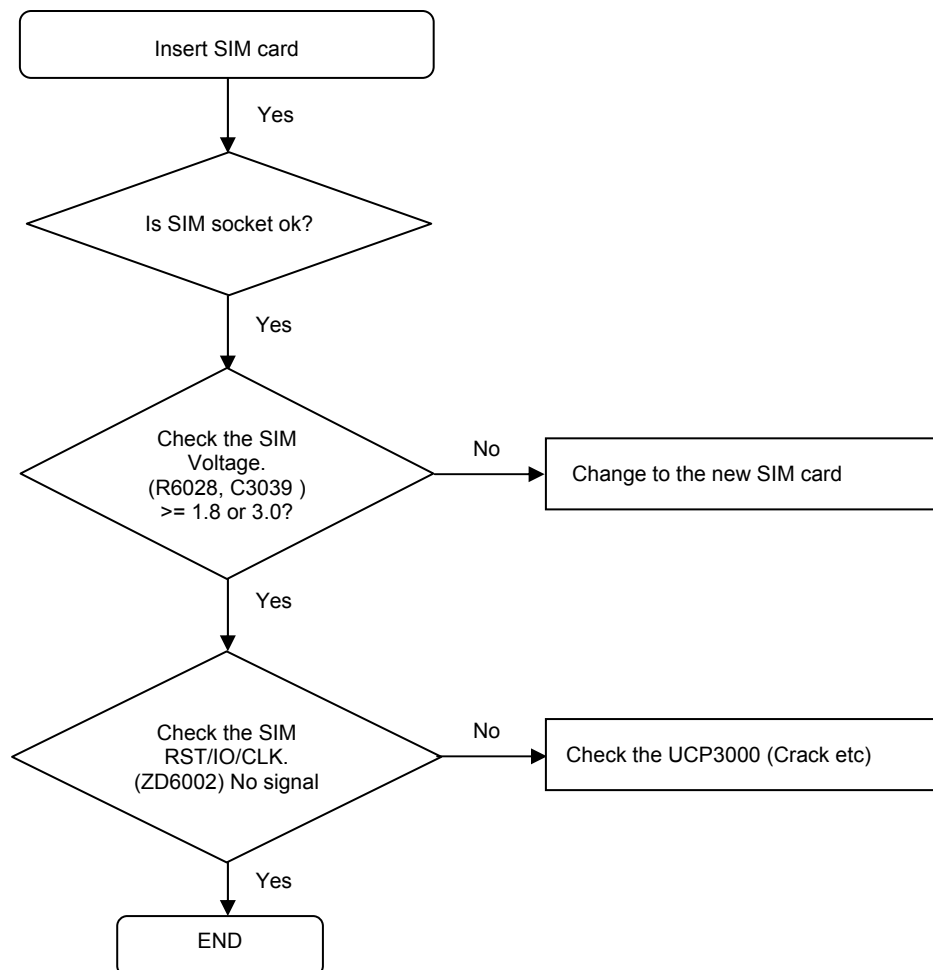
8. Level 3 Repair

8-4-3. No Service



8. Level 3 Repair

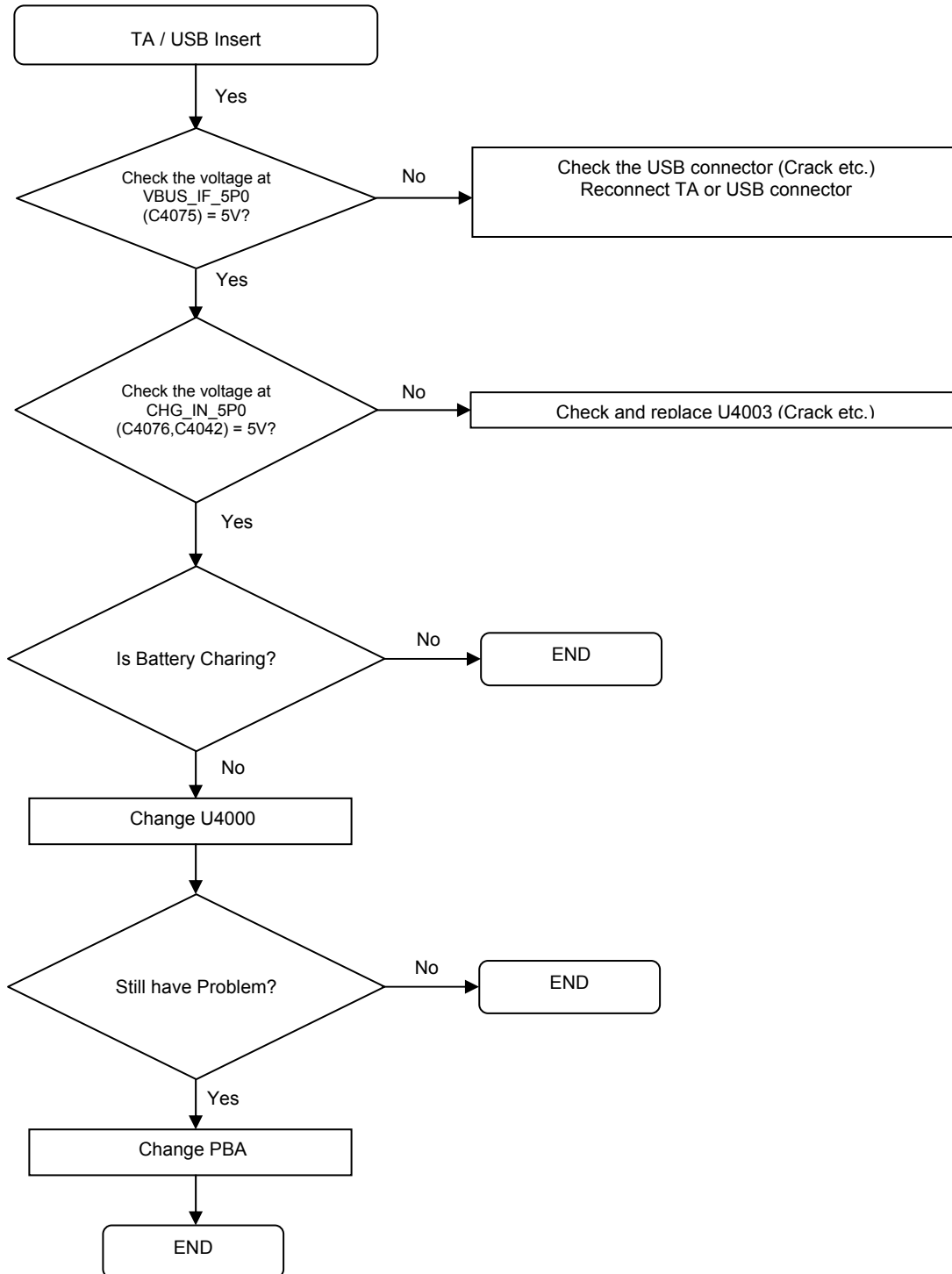
8-4-4. Sim Part



8. Level 3 Repair

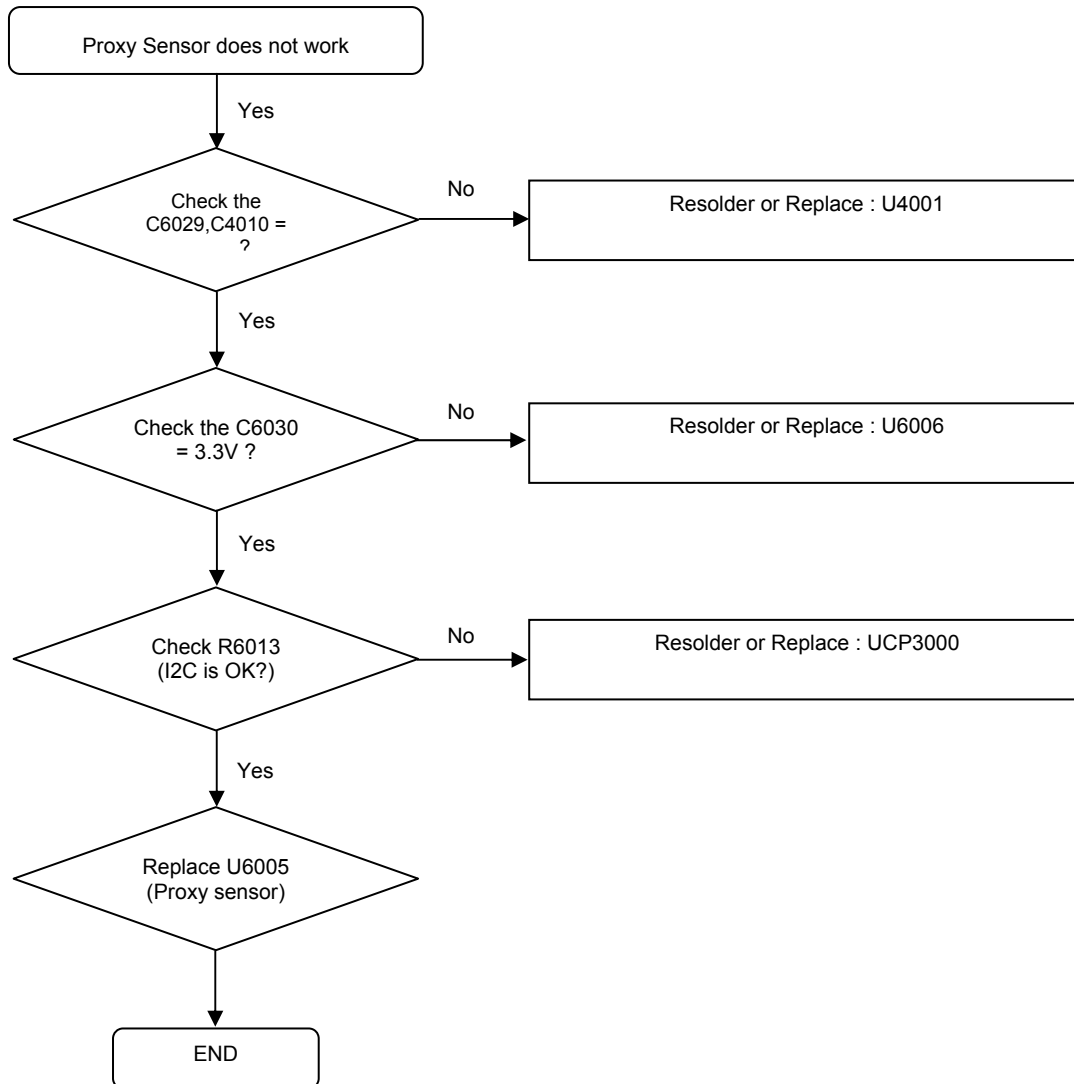
8-4-5. Charging Part

- First of all, Please check the battery status.



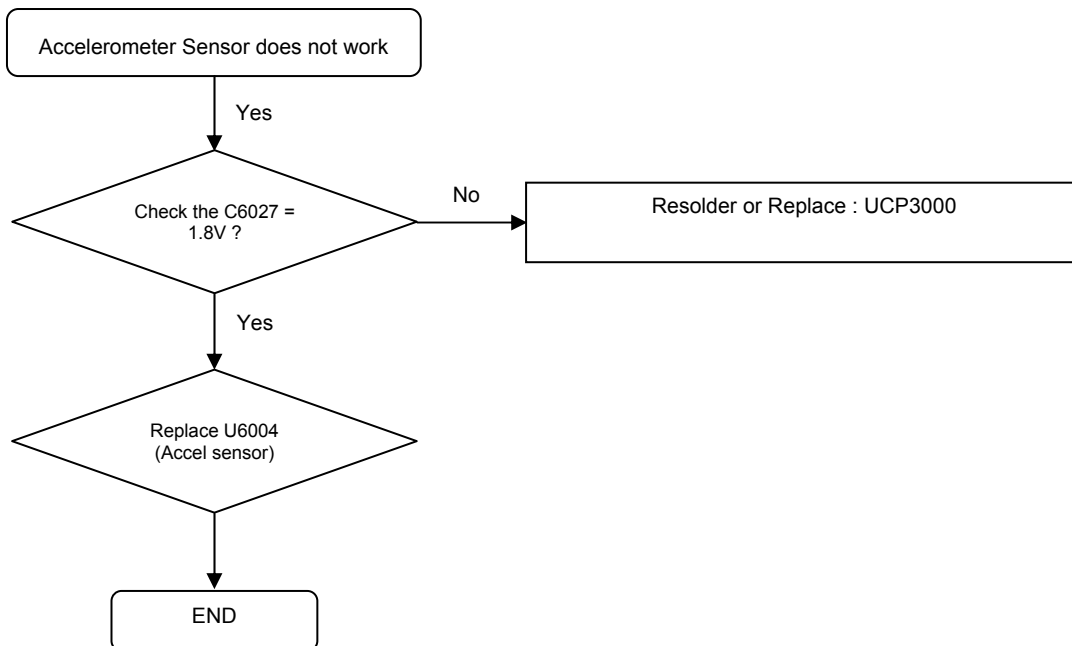
8. Level 3 Repair

8-4-6. Proxy Sensor



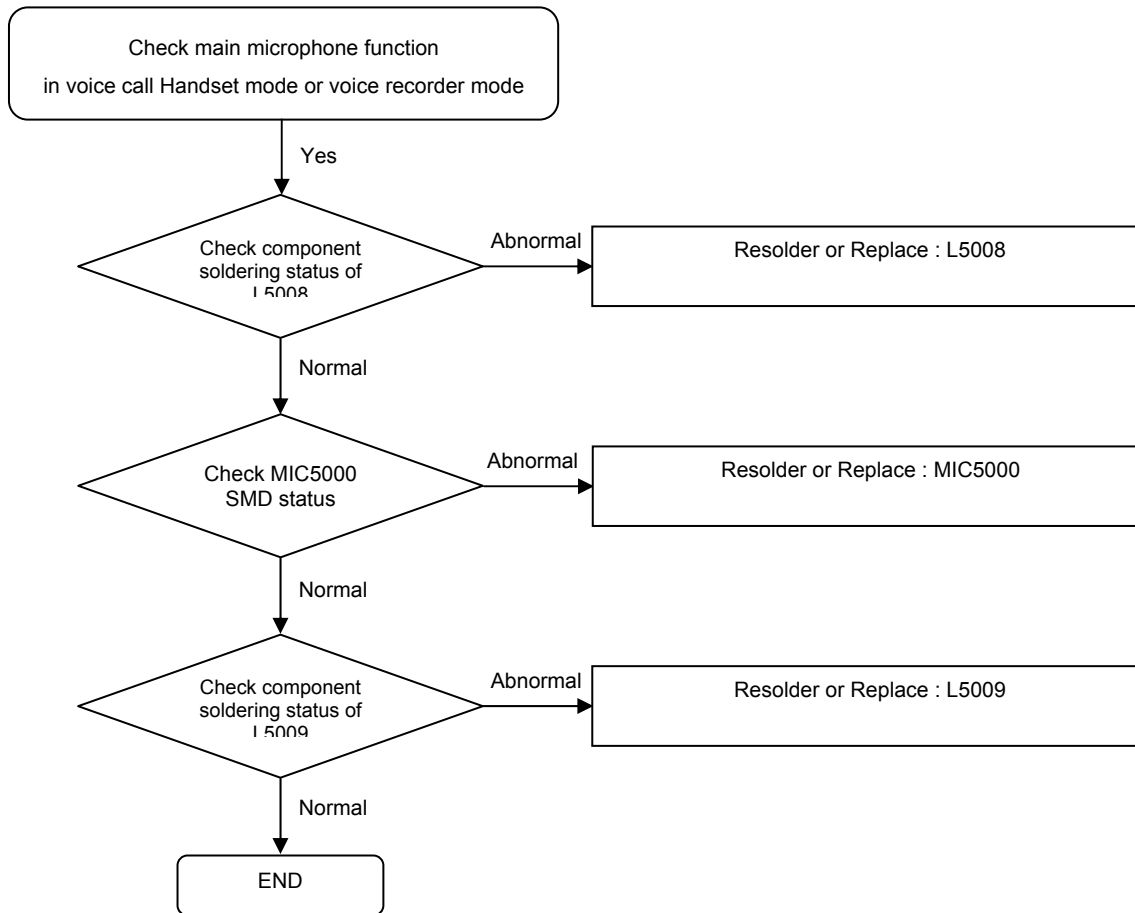
8. Level 3 Repair

8-4-7. Accel Sensor



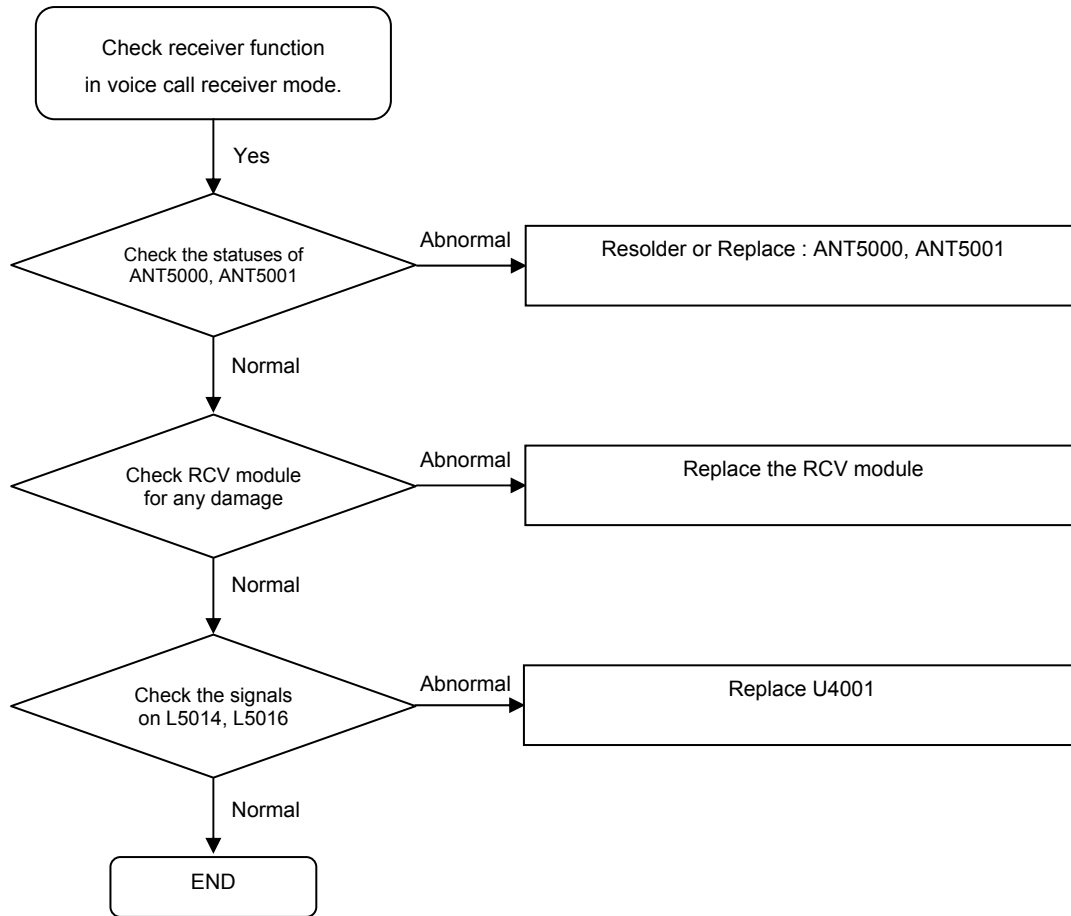
8. Level 3 Repair

8-4-8. Microphone Part



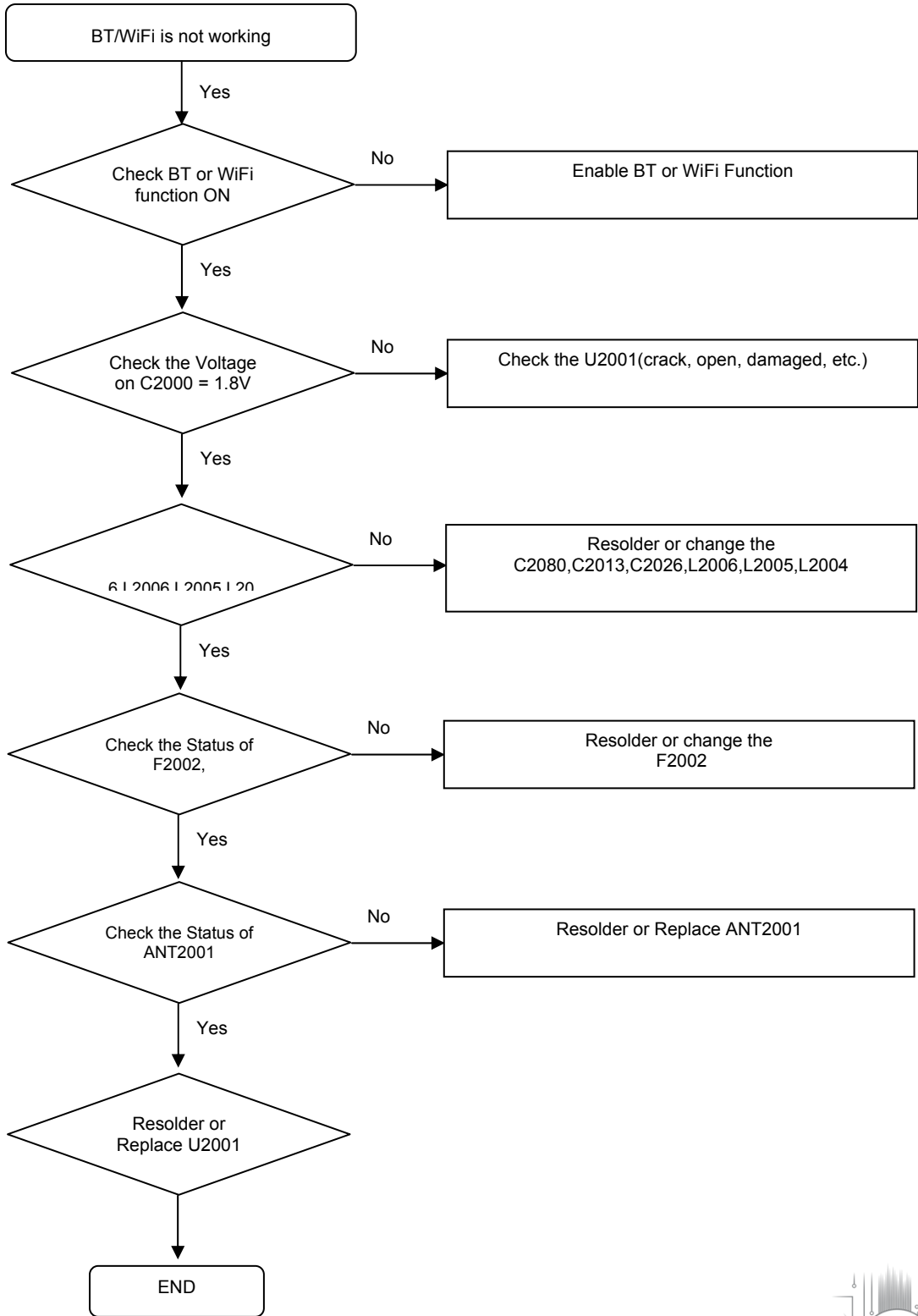
8. Level 3 Repair

8-4-9. Receiver Part



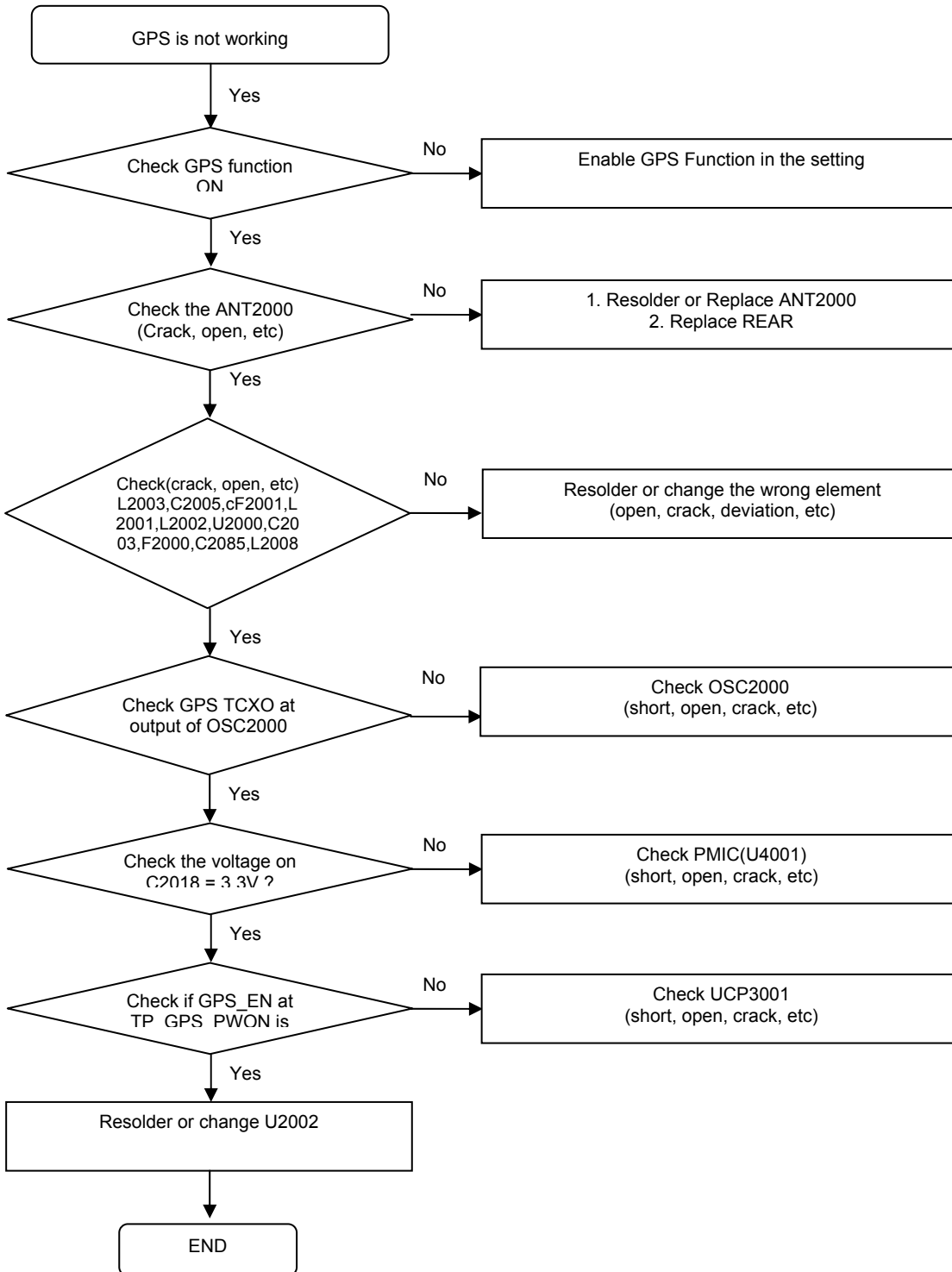
8. Level 3 Repair

8-4-10. BT/WIFI



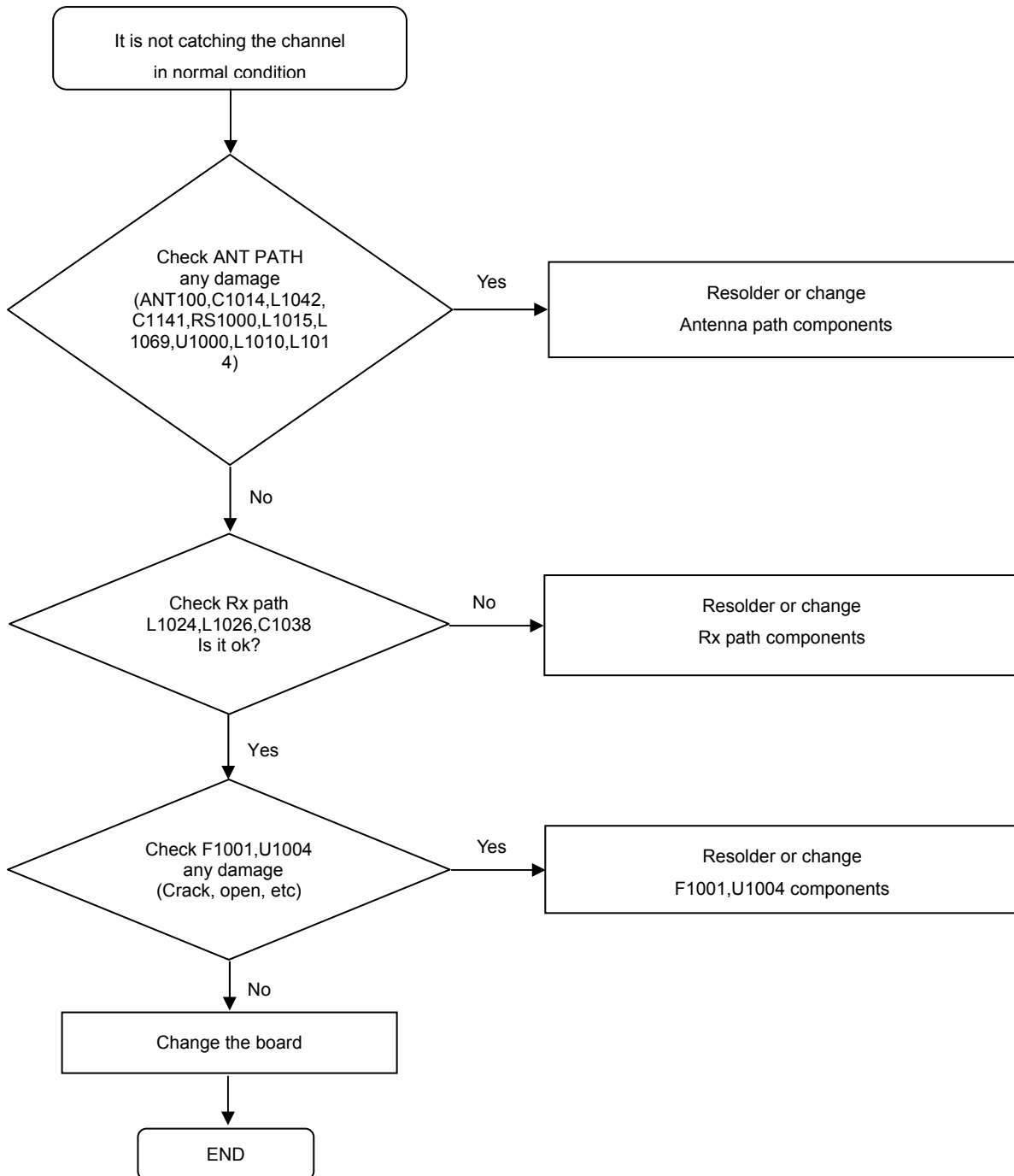
8. Level 3 Repair

8-4-11. GPS



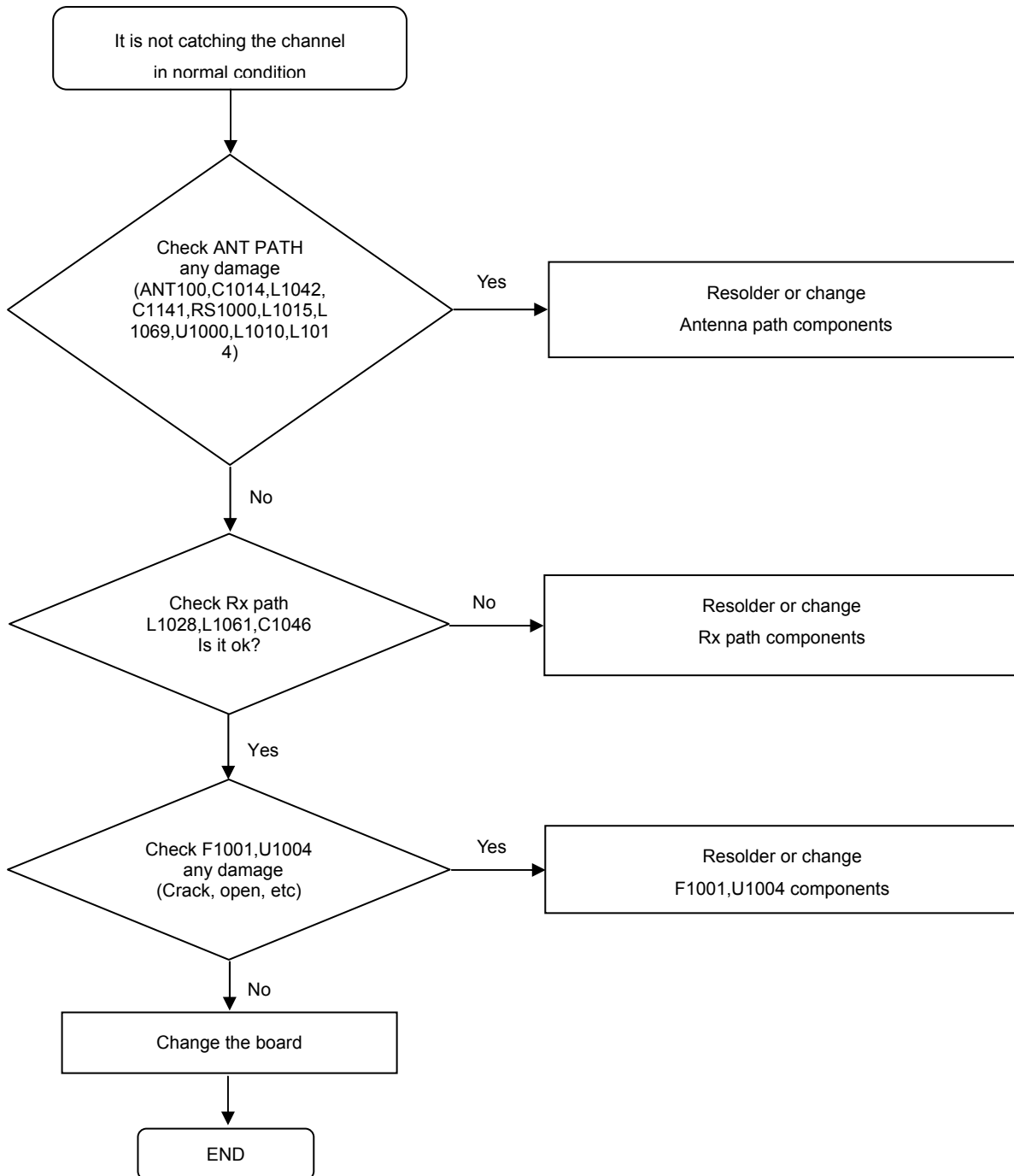
8. Level 3 Repair

8-4-12. GSM 850 / WCDMA 850 / LTE B5 RX



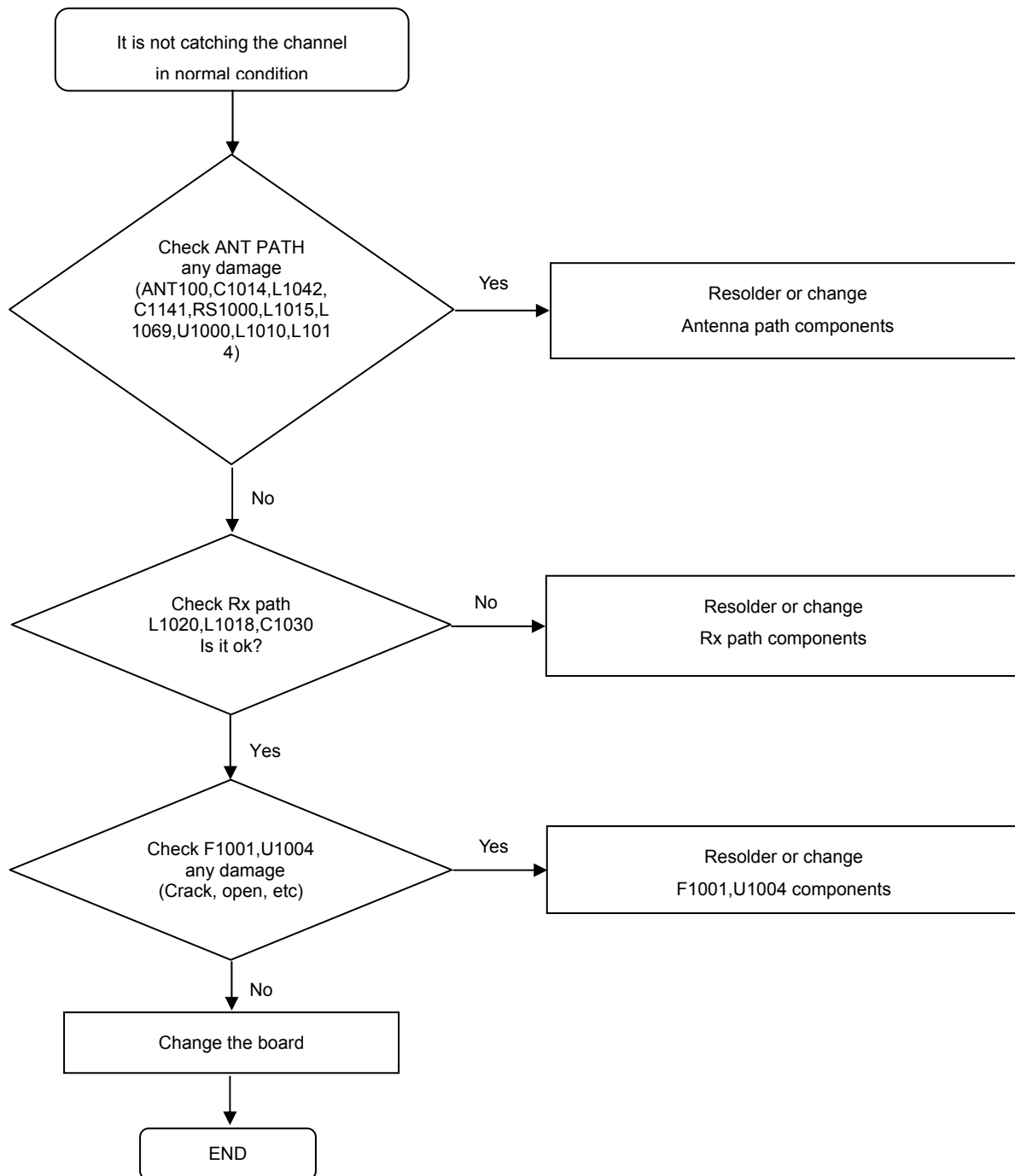
8. Level 3 Repair

8-4-13. GSM 900 / WCDMA 900 / LTE B8 RX



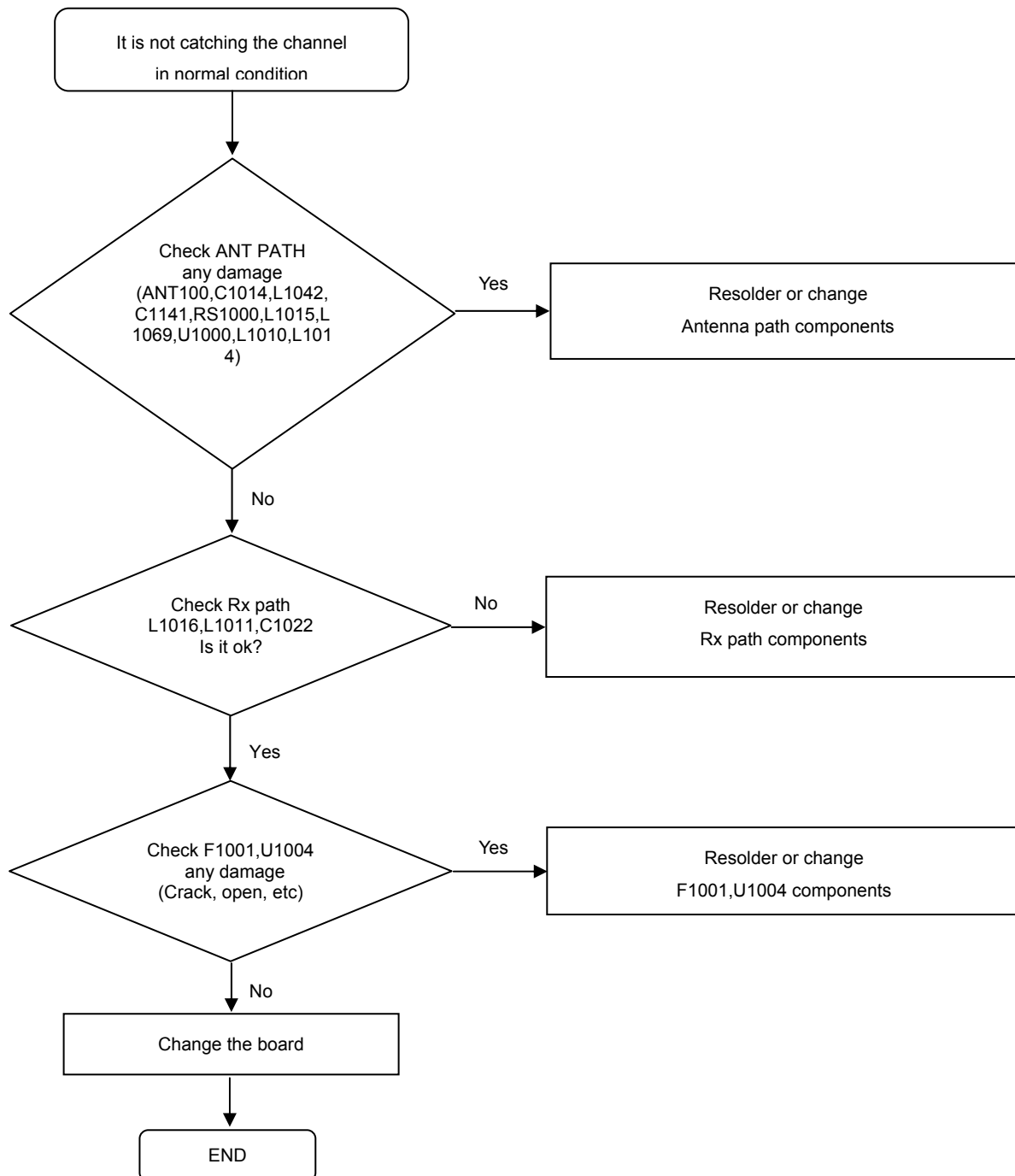
8. Level 3 Repair

8-4-14. GSM 1800 / LTE B3 RX



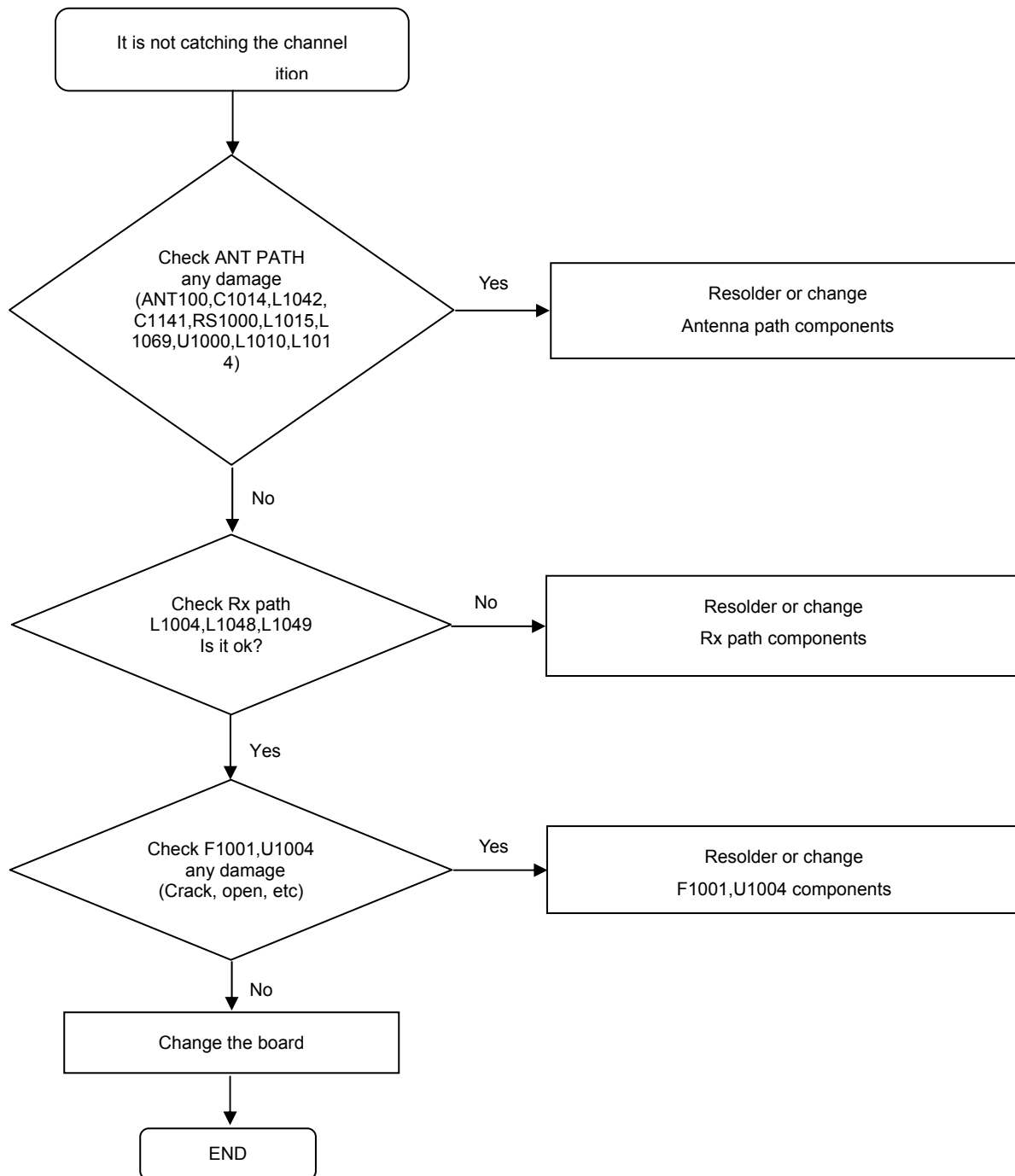
8. Level 3 Repair

8-4-15. GSM 1900 / WCDMA 1900



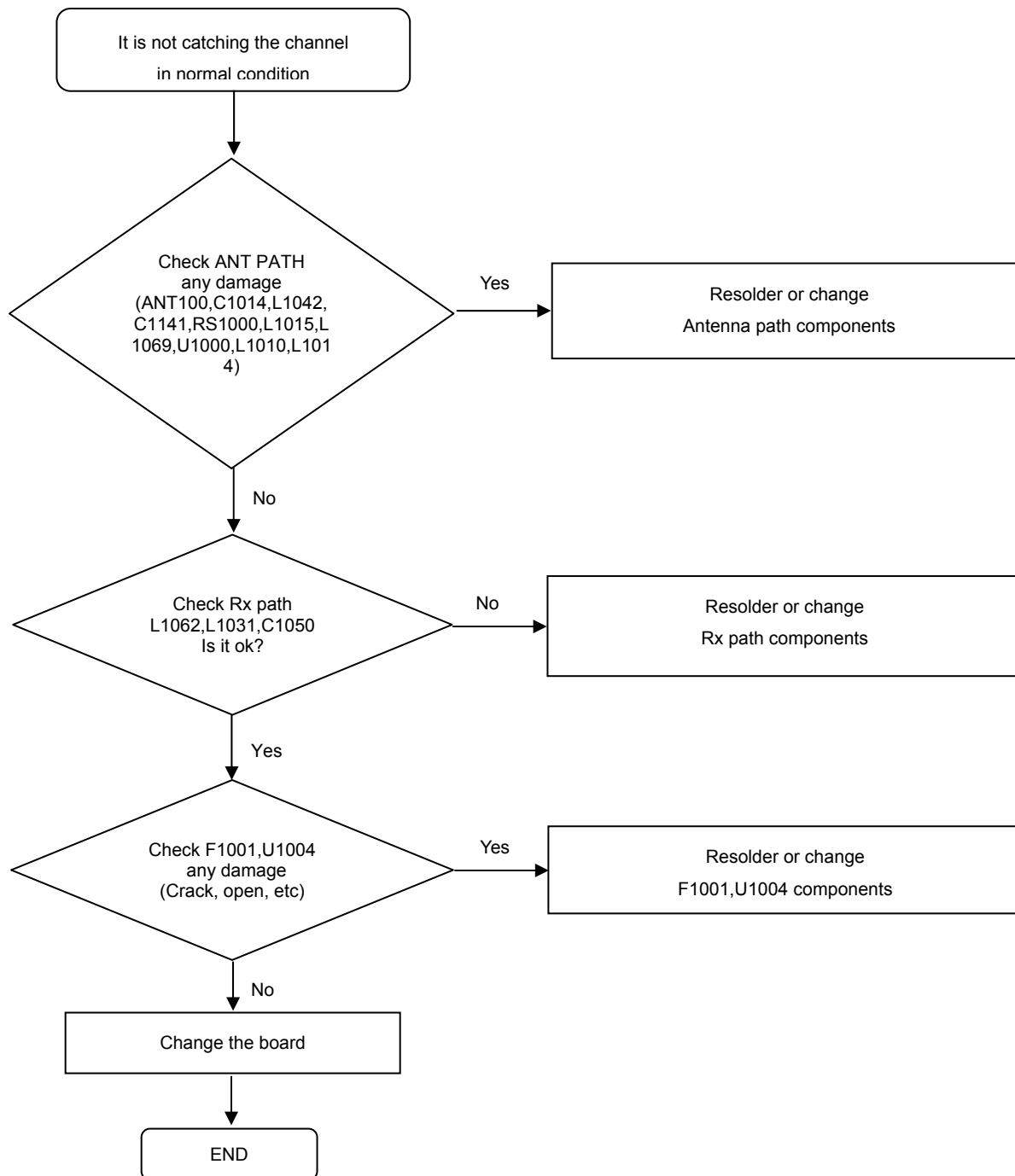
8. Level 3 Repair

8-4-16. WCDMA 2100 / LTE B1 RX



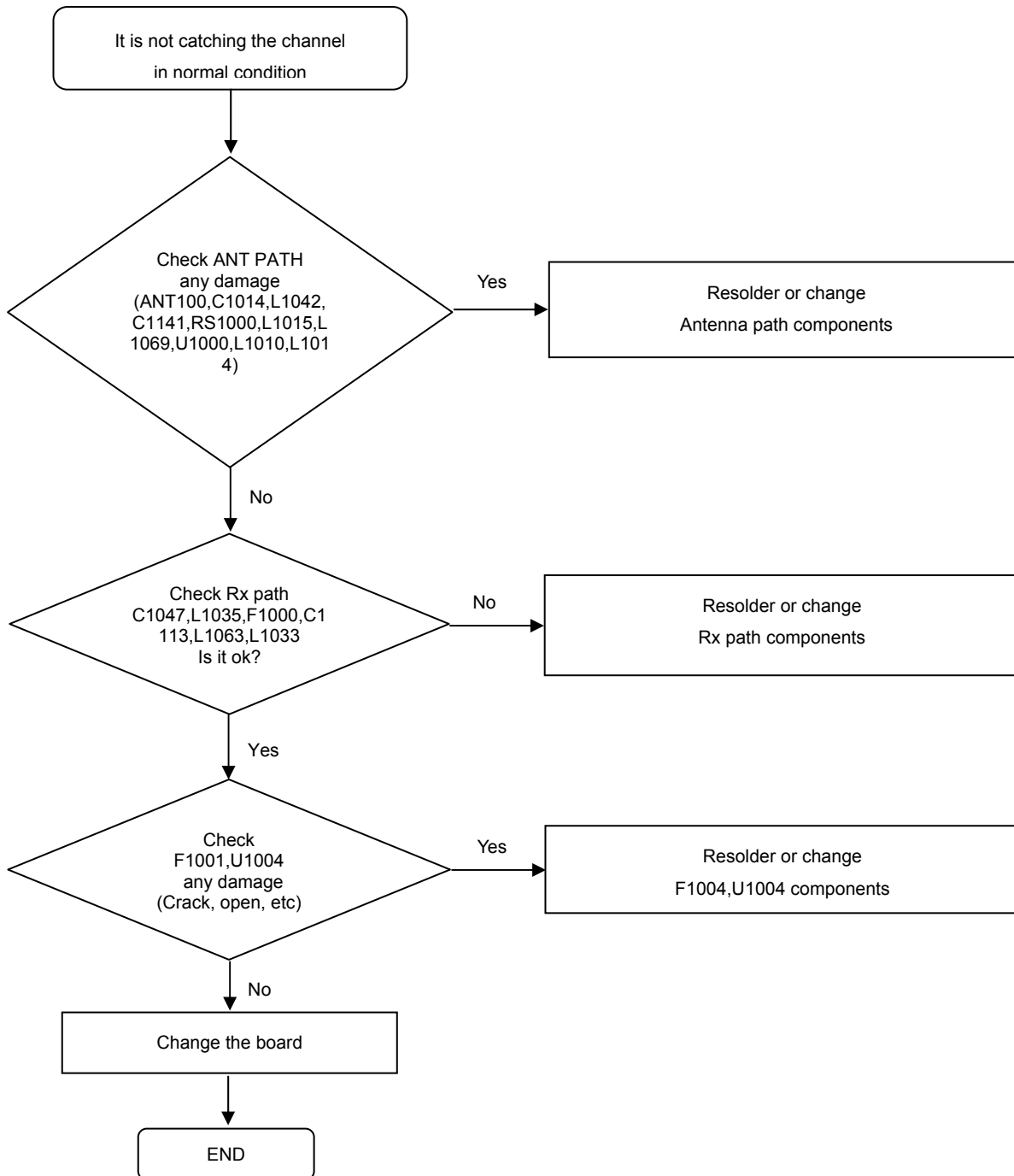
8. Level 3 Repair

8-4-17. B20 RX



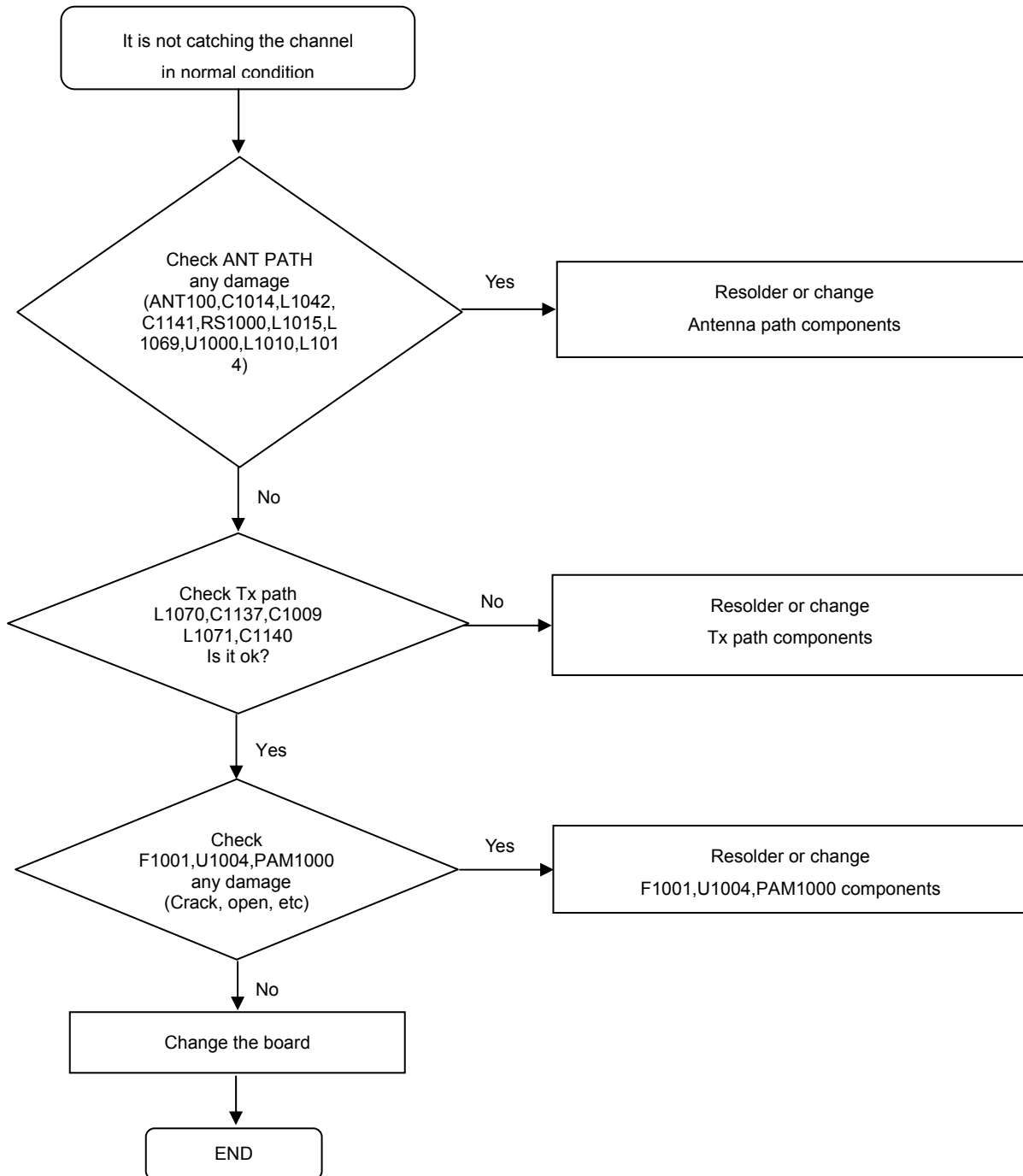
8. Level 3 Repair

8-4-18. LTE B40 RX



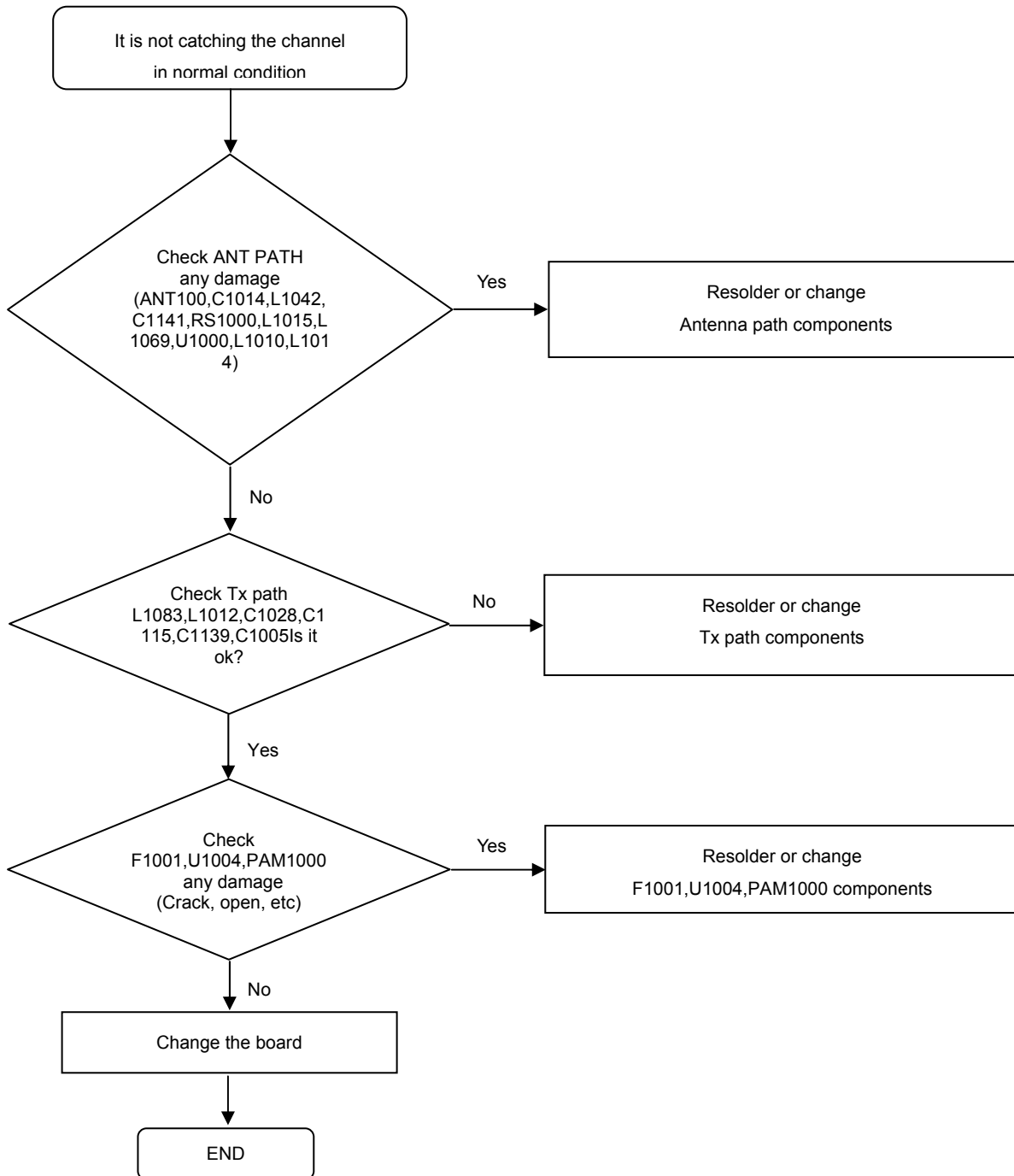
8. Level 3 Repair

8-4-19. GSM850/GSM900 TX



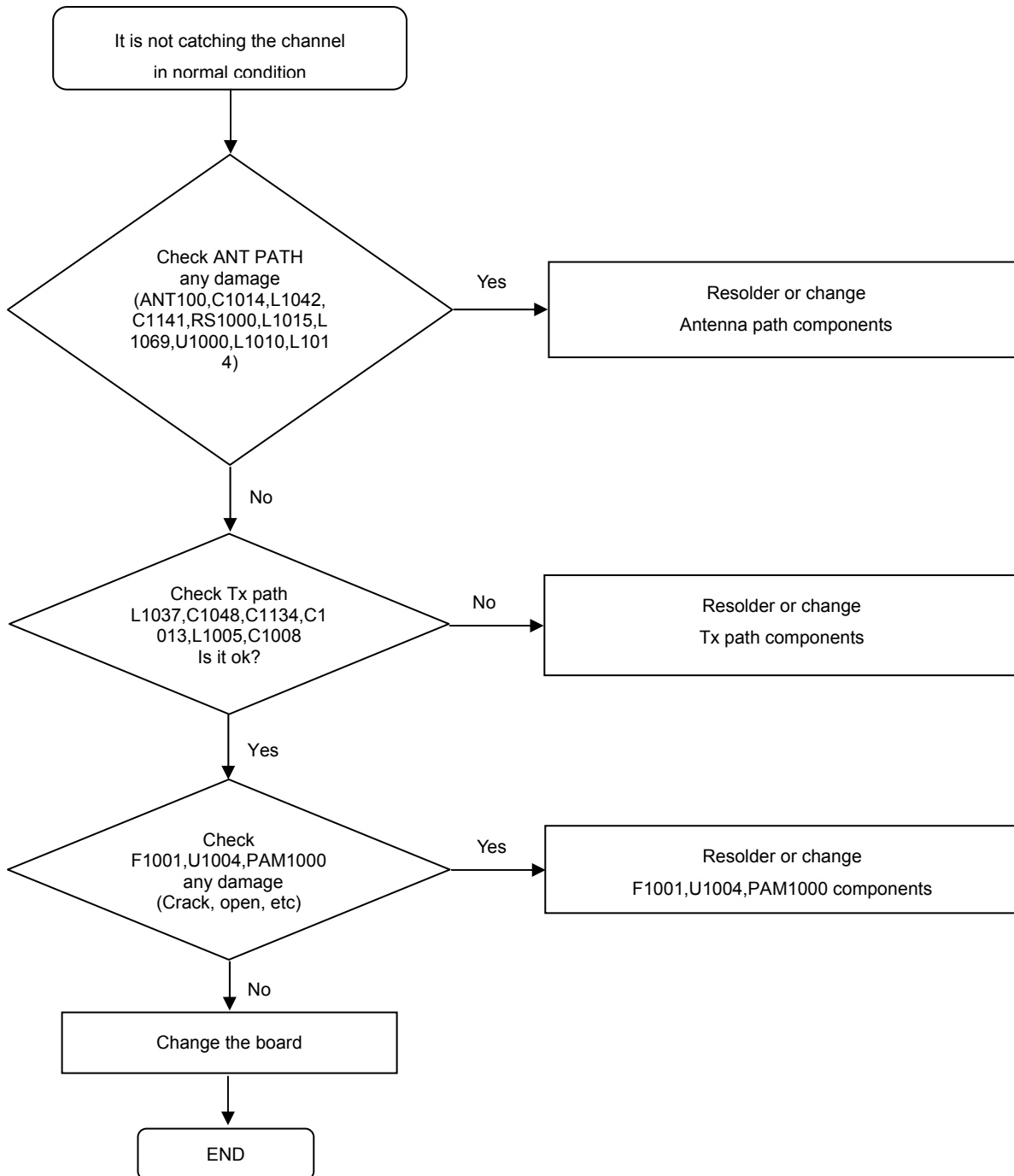
8. Level 3 Repair

8-4-20. GSM1800/GSM1900 TX



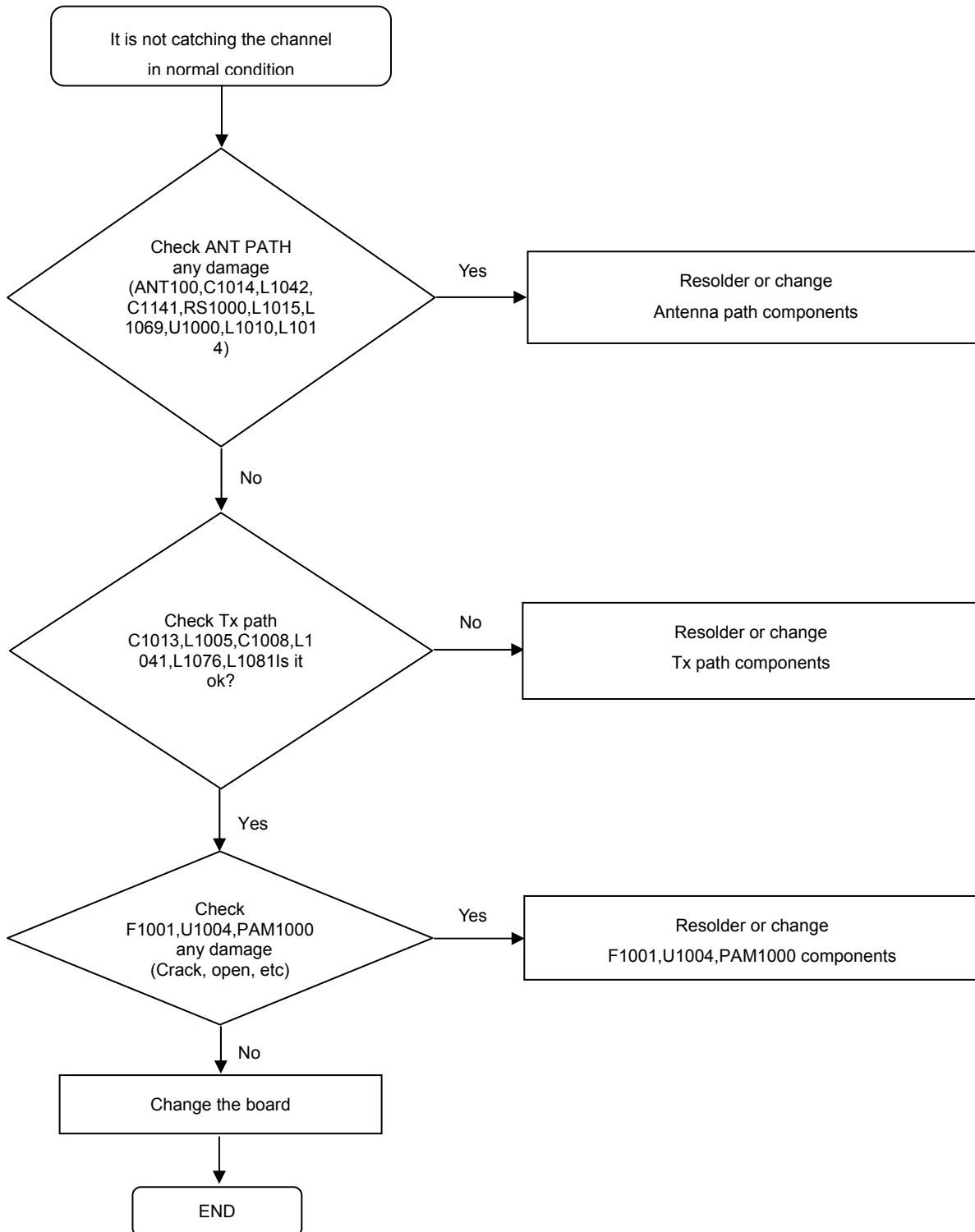
8. Level 3 Repair

8-4-21. WCDMA2100/LTE B1 TX



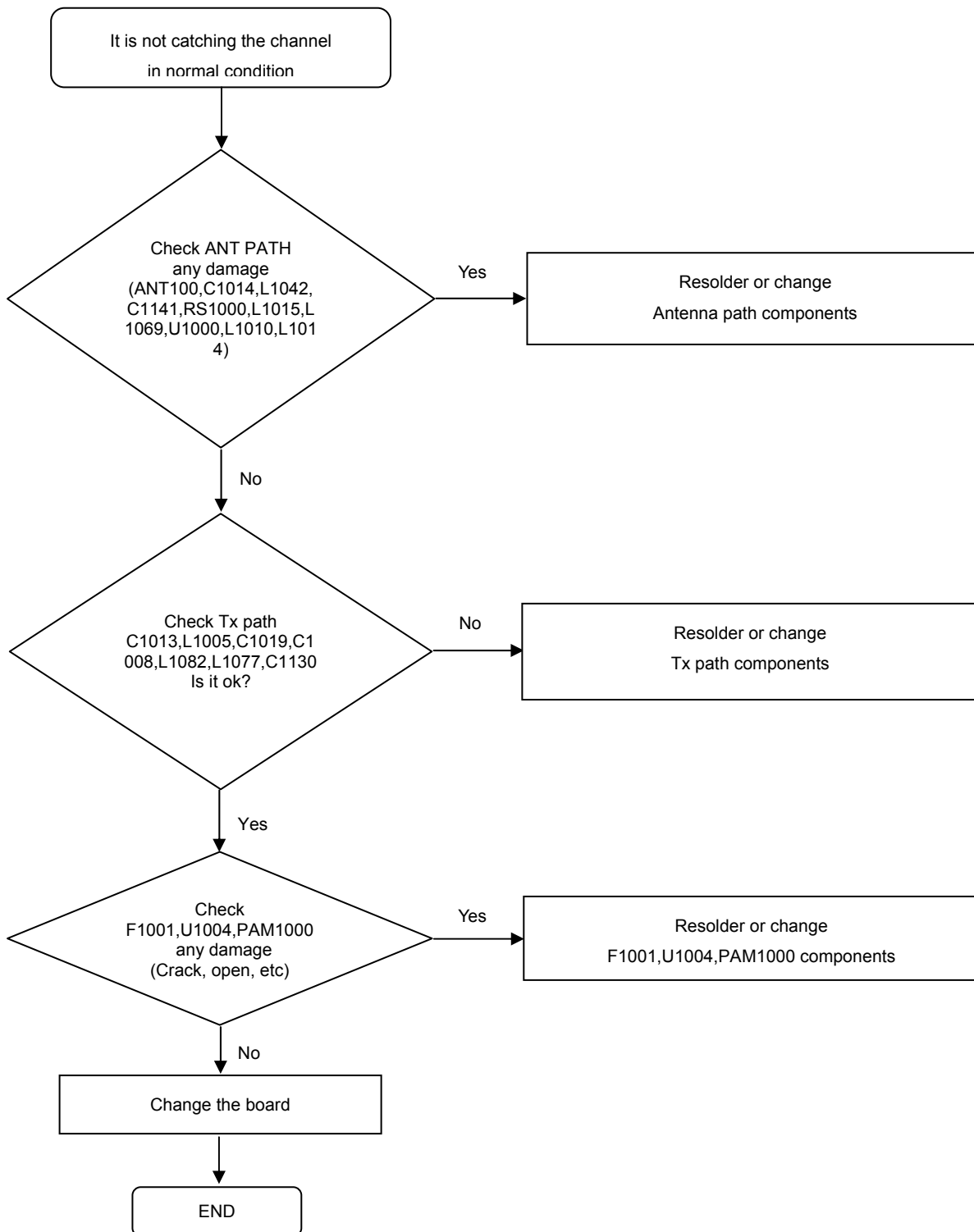
8. Level 3 Repair

8-4-22. WCDMA1900 TX



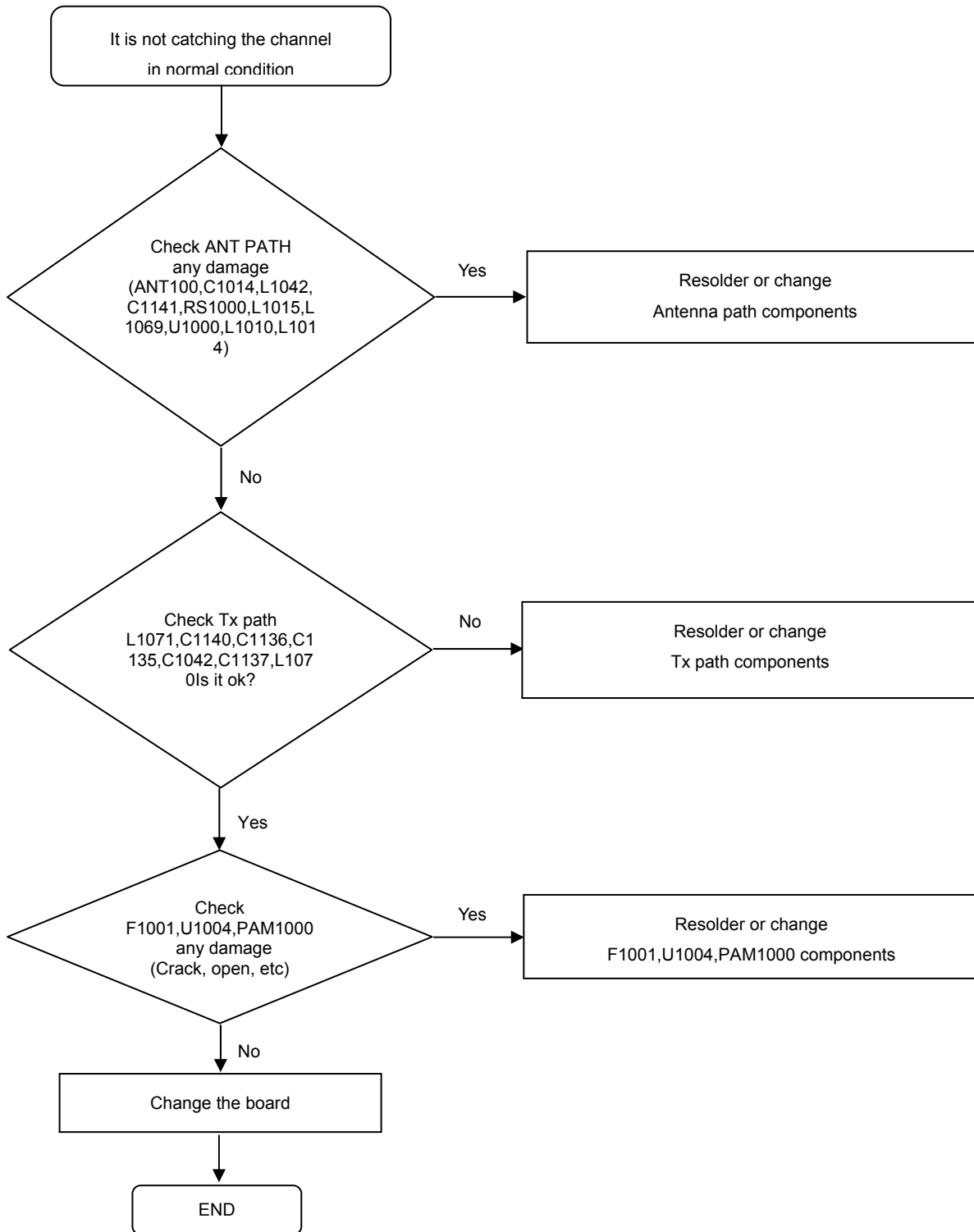
8. Level 3 Repair

8-4-23. LTE B3 TX



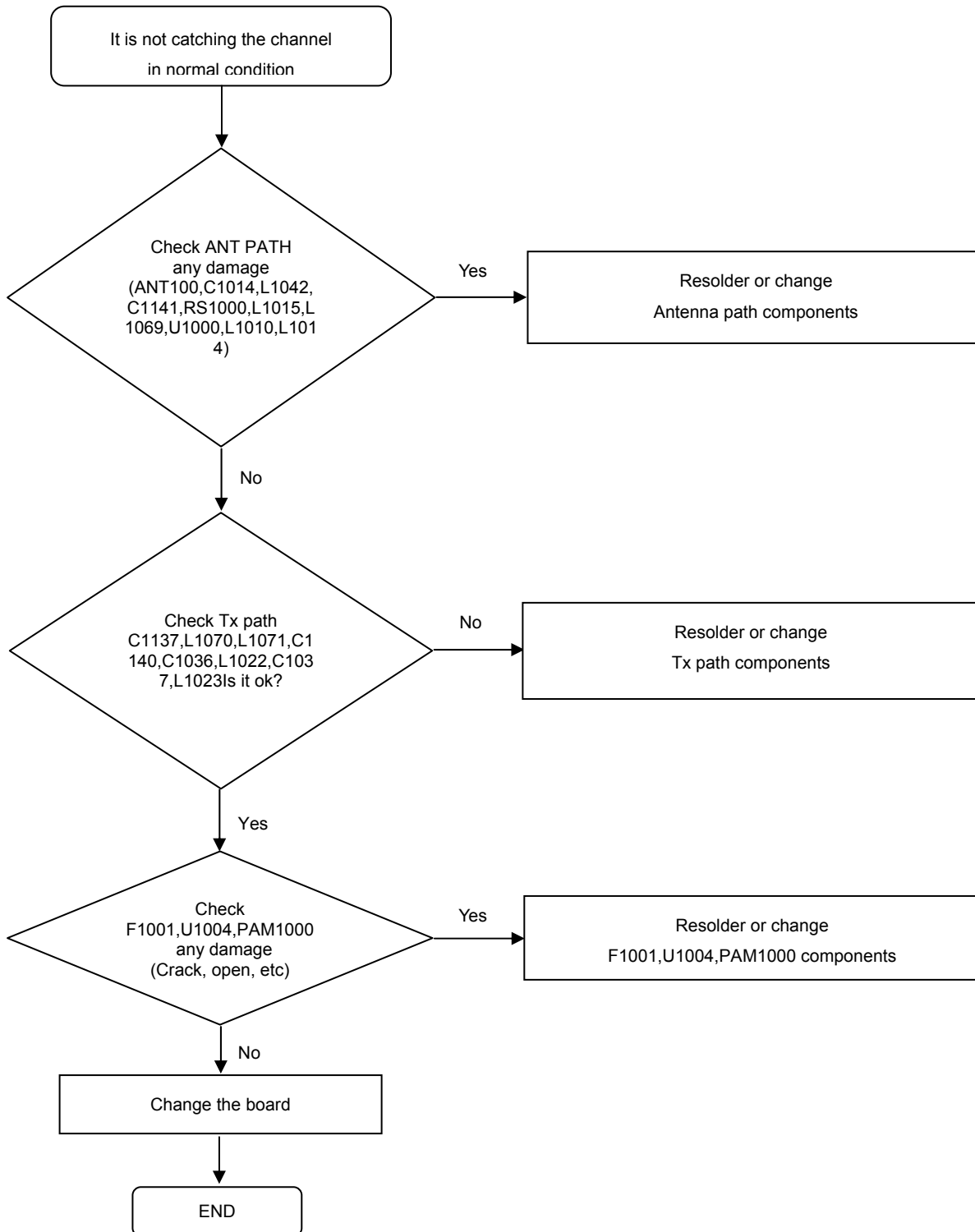
8. Level 3 Repair

8-4-24. WCDMA850/LTE B5 TX



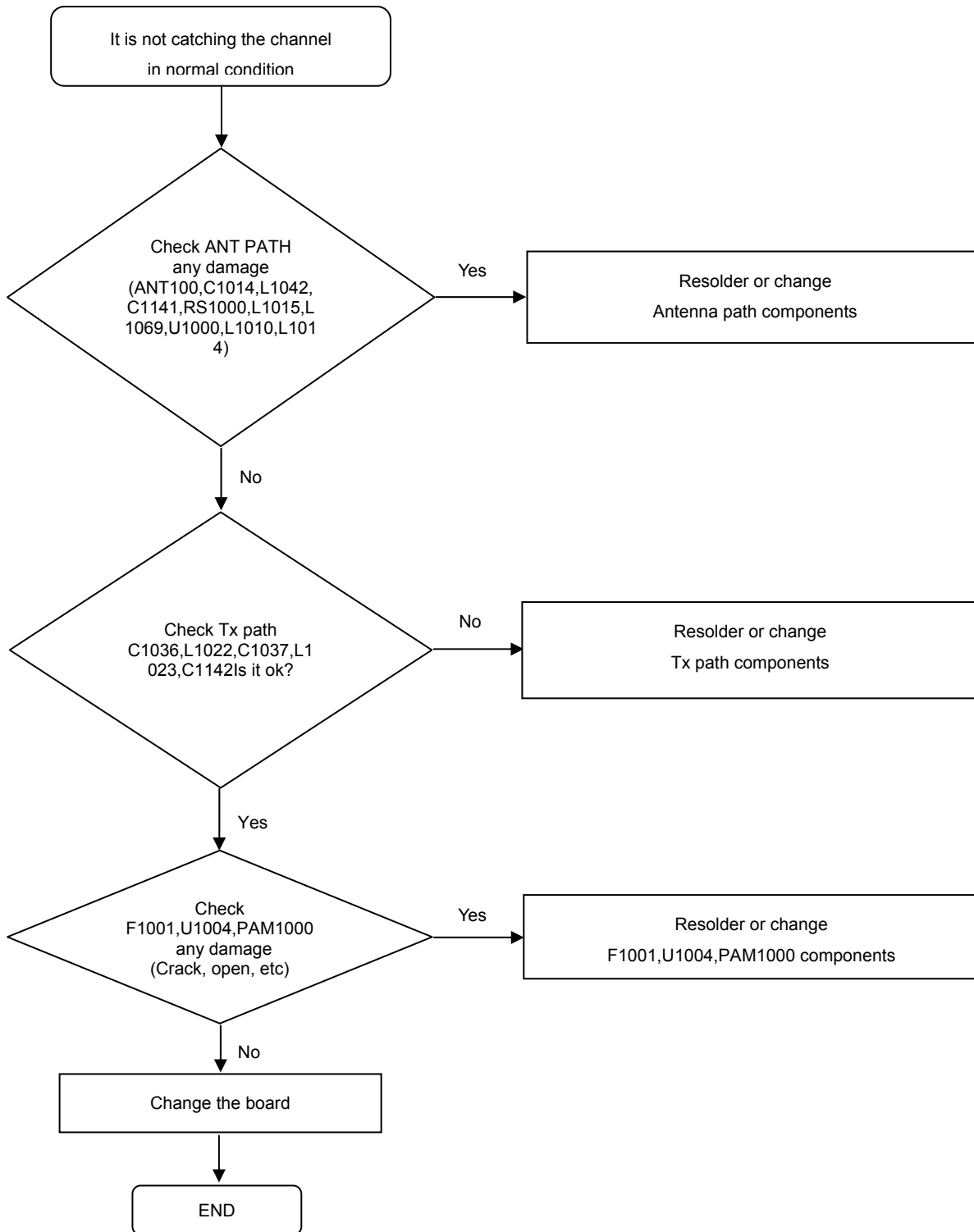
8. Level 3 Repair

8-4-25. WCDMA900/LTE B8 TX



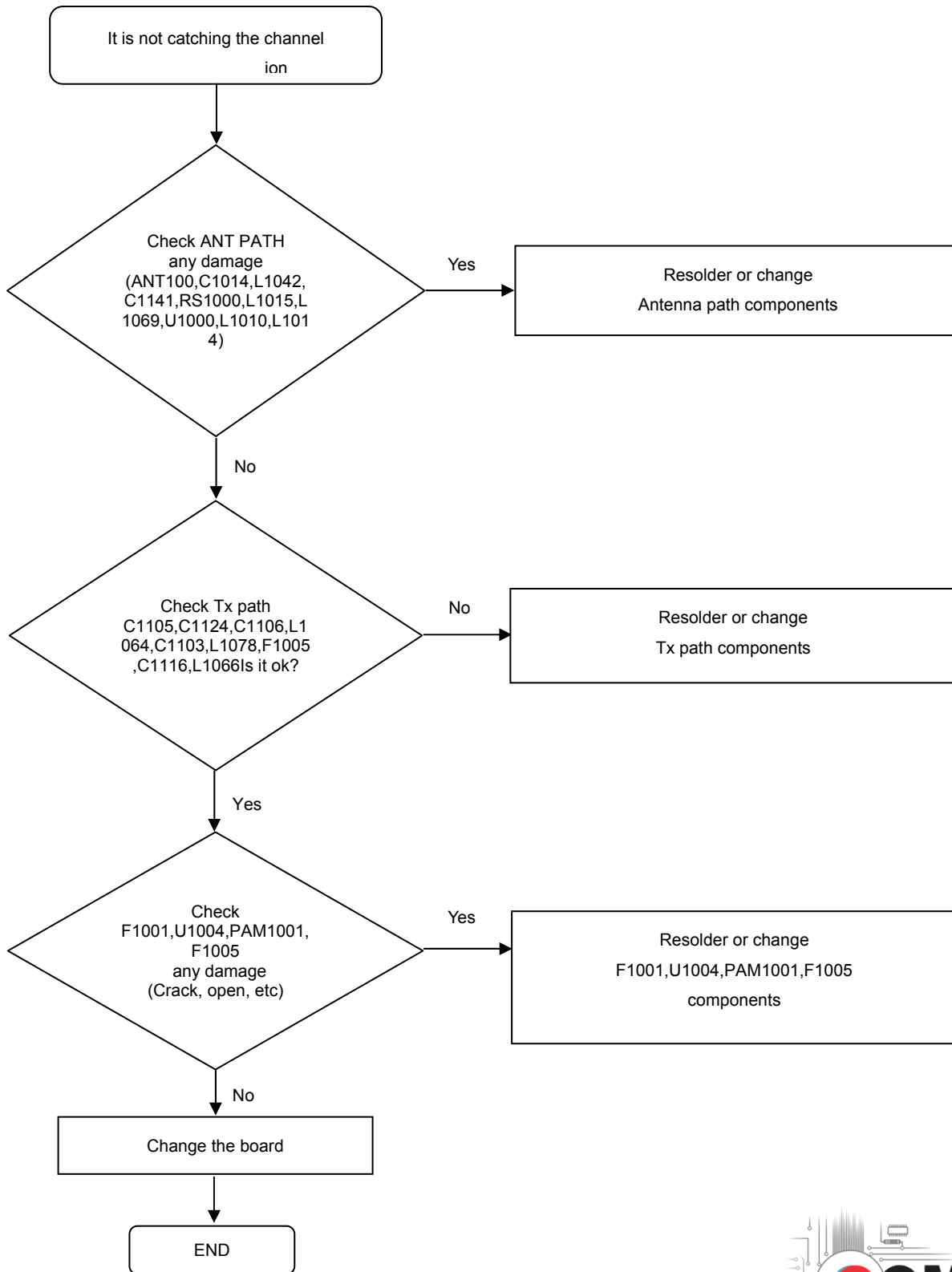
8. Level 3 Repair

8-4-26. LTE B20 TX



8. Level 3 Repair

8-4-27. LTE B40 TX



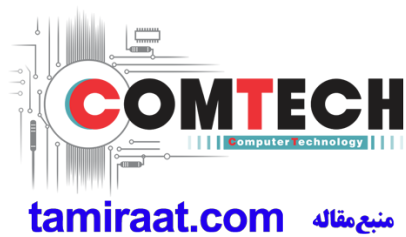
8. Level 3 Repair

8-5. Service Schematics

- NC Point(Top View)

UCP3000 (AP)

	1	2	3	4	5	6	7	8	9	10	11	12	13	14	15	16	17	18	19	20	21	22	23	24	25	26	27	28	29				
A	EMVSS	NC	EMC_D2	REF0	REF0		CMCLK	CORQ		MCS10_A	MCS10_D	MCS11_T	MCS11_A	LVDS_C	LVDS_D		LVDS_D	SPI2_CS	SPI2_CS	SPI2_CLK			MEMS_M	NC	NC								
B	NC	EMSS0	EMC_R0	EMC_D4	REF0	EMC_D1	REF0	SDA0		MCS10_A	MCS10_D	MCS10_N	MCS10_T	LVDS_D	LVDS_D	LVDS_D	LVDS_D	SPI2_D	KEYOUT	KEYOUT	KEYOUT	KEYOUT	MEMS_M	MEMS_M	MEMS_M	MEMS_M	MEMS_M	MEMS_M	MEMS_M				
C	EMD[3]	EMD[3]	EMC_D0				EMCCIR0			SCL0		MCS10_A	MCS10_D	MCS11_T	MCS11_A	LVDS_D	LVDS_D		AVSS_V				SPI0_CLK	SDA2									
D	EMD[17]	EMD[17]	EMD[17]	EMC_D5	EMC_D5	EMC_D5	EMC_D5	EMC_D5	EMC_D5	EMC_D5	EMC_D5	EMC_D5	EMC_D5	EMC_D5	EMC_D5	EMC_D5	EMC_D5	EMC_D5	EMC_D5	EMC_D5	EMC_D5	EMC_D5	EMC_D5	EMC_D5	EMC_D5	EMC_D5	EMC_D5	EMC_D5	EMC_D5	EMC_D5			
E	EMVSS			EMD[3]	EMC_D5		EMC_D5	EMC_D5	EMC_D5	EMC_D5	EMC_D5	EMC_D5	EMC_D5	EMC_D5	EMC_D5	EMC_D5	EMC_D5	EMC_D5	EMC_D5	EMC_D5	EMC_D5	EMC_D5	EMC_D5	EMC_D5	EMC_D5	EMC_D5	EMC_D5	EMC_D5	EMC_D5	EMC_D5			
F	EMD[15]	EMD[15]	EMD[15]	EMD[15]	EMD[15]		VNF0	CMPO	VSS				AVSS_V			AVDD_P	AVSS_P			AVSS_P	AVSS_P	AVSS_P	AVSS_P	AVSS_P	AVSS_P	AVSS_P	AVSS_P	AVSS_P	AVSS_P	AVSS_P	AVSS_P		
G	EMD[3]	EMD[13]				VNF1				MCS10_A	MCS10_D	AVDD_L				AVSS_V			AVSS_V	AVSS_V	AVSS_V	AVSS_V	AVSS_V	AVSS_V	AVSS_V	AVSS_V	AVSS_V	AVSS_V	AVSS_V	AVSS_V	AVSS_V		
H	EMVSS	EMD[13]	EMD[13]	EMVSS																													
J	EMD[13]			EMVSS																													
K	EMD[10]		EMD[10]	EMVSS																													
L	EMD[8]	EMD[8]	EMD[8]	EMVSS																													
M	EMVSS			EMVSS																													
N		EMA[8]	EMA[8]	EMVSS																													
P	EMA[8]			EMD[10]																													
R	EMA[5]	EMA[7]	EMATO																														
T	EMVSS			CLKDPMEN																													
U		EMCS_N	EMCKE0																														
V	EMCS_N	EMA[3]																															
W	EMA[4]	EMA[2]		EMA[1]	EMD[10]																												
Y			EMA[10]	EMD[10]																													
AA	EMD[6]	EMD[6]		EMD[6]																													
AB	EMD[6]	EMD[6]	EMD[6]																														
AC	EMD[6]	EMD[6]	EMD[6]	EMSS0																													
AD	EMSS0		EMD[6]	EMSS0																													
AE	EMD[6]	EMD[6]	EMD[6]																														
AF	EMD[2]	EMD[2]	EMD[2]	EMD[10]																													
AG	EMD[2]		EMD[2]	EMD[2]																													
AH	NC		EMD[2]	EMD[2]																													
AI	EMSS0	NC	EMD[7]																														



Confidential and proprietary-the contents in this service guide subject to change without prior notice

Distribution, transmission, or infringement of any content or data from this document without Samsung's written authorization is strictly prohibited.