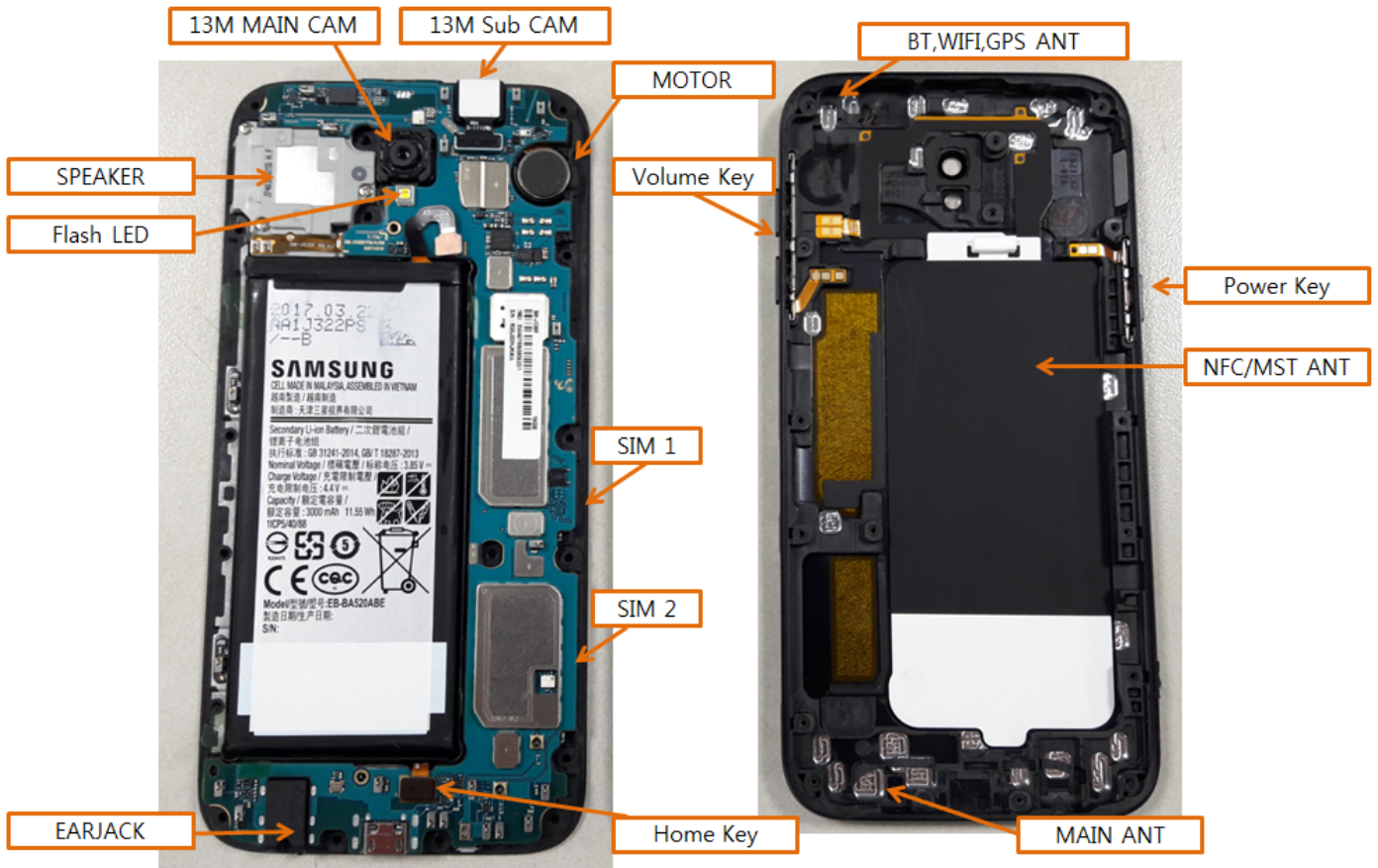


## 7. Level 2 Repair

### 7-1. Components on the Rear Case



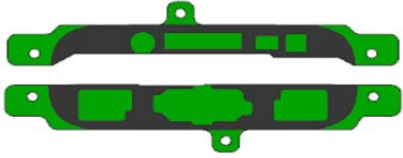
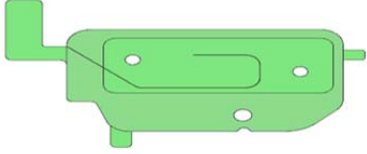

## 7. Level 2 Repair

### 7-2. Pre-requisite

	
<p><b>Tweezers / Disass'y Stick / Screw Driver</b></p>	<p><b>Anti-static Gloves</b></p>
	
<p><b>Anti-static Mat</b></p>	<p><b>Hot Plate</b></p>
	
<p><b>A OCTA Disassembly Holder</b></p>	<p><b>OCTA Disassembly Upper</b></p>
	
<p><b>Ethyl Alcohol</b></p>	<p><b>Cotton Swab</b></p>

## 7. Level 2 Repair

### 7-3. Parts which must be changed after repair

BOM Description & part code	Image	Remarks
<b>WINDOW TAP TOP/BTM</b> TOP : [GH02-14894A] BTM : [GH02-14896A]		<b>Whenever the device Is disassembled and reassembled</b>
<b>HR TAPE</b> [GH02-14909A]		
<b>A/S Touch Key OCTA Tape</b> [GH81-14737A]		

## 7. Level 2 Repair

### 7-4. Disassembly

<div data-bbox="135 297 782 566" style="border: 1px solid black; padding: 5px;"> <p><b>1</b></p> <p>1) Put the device in the chamber or Hot plate as below heating condition          - SOC 68%↓: 70°C/10~20min          - SOC 68%↑: 60°C/10~20min          ※ Please confirm the heating condition released lastly, and follow it.          2) Detach the OCTA using Vaccum jig.</p> </div> <div data-bbox="130 667 762 981"> </div>	<div data-bbox="813 297 1468 398" style="border: 1px solid black; padding: 5px;"> <p><b>2</b></p> <p>Disassemble SIM Tray 1,2 from device. Unscrew 17 Points.</p> </div> <div data-bbox="917 432 1401 1025"> </div>
<p>※ <b>Caution</b></p> <p>1) Be careful not to damage set and OCTA.</p>	
<div data-bbox="135 1153 782 1220" style="border: 1px solid black; padding: 5px;"> <p><b>3</b></p> <p>Disassemble the REAR.</p> </div> <div data-bbox="183 1366 694 1758"> </div>	<div data-bbox="813 1153 1468 1288" style="border: 1px solid black; padding: 5px;"> <p><b>4</b></p> <p>Unscrew 2 Points of PBA and disassemble Home key / Battery connector.</p> </div> <div data-bbox="1013 1310 1300 1848"> </div>
<p>※ <b>Caution</b></p> <p>1) Be careful not to damage the PBA.</p>	

## 7. Level 2 Repair

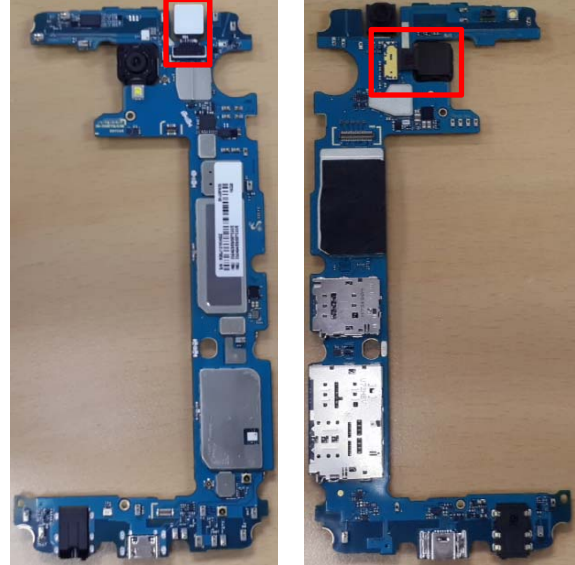
5

Disassemble PBA / Front.



6

Disassemble Front & Rear Camera.



※ Caution

1) Be careful not to damage the PBA.

※ Caution

1) Be care of FPCB damage.

7

Unscrew 3 points.  
Disassemble Speaker.



※ Caution

1) Be careful not to damage the speaker.

## 7. Level 2 Repair

### 7-5. Assembly

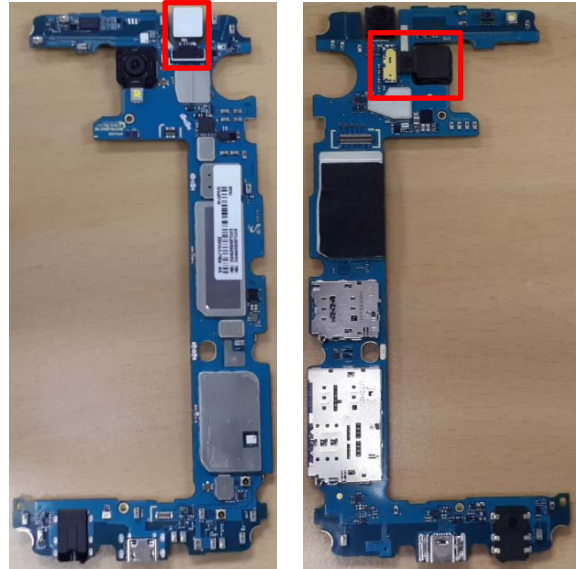
1

Assemble speaker in Front.  
Screw 3 points.  
Torque : 1.0 Kgf·cm±7%, 1.4\*3.0



2

Assemble Front & Rear Camera.



※ Caution

1) Be careful not to damage the speaker.

※ Caution

1) Be care of FPCB damage.

3

Assemble PBA on Front.  
Attach Home key and Battery Connector.



4

Screw 2 points of the PBA.  
Torque : 1.0 Kgf·cm±7%, 1.2\*2.5





※ Caution

1) Be care of FPCB damage.

※ Caution

1) Be careful not to damage the PBA.

## 7. Level 2 Repair

<p><b>5</b> Assemble Front assy on REAR vertically.</p> 	<p><b>6</b> Screw 17 points of the Front. Torque : 0.9 Kgf·cm±7%, 1.6*3.7</p> 
<p>※ <b>Caution</b> 1) Be careful not to damage PBA.</p>	<p>※ <b>Caution</b> 1) Be care of scratch and molding damage</p>
<p><b>7</b> Assemble OCTA connector and connector cover and Attach OCTA.</p> 	<p><b>8</b> Press the device using pressing jig. - Force : 1N - Time : 1 minute</p> 
<p>※ <b>Caution</b> 1) Be careful not to damage the OCTA.</p>	<p>※ <b>Caution</b> 1) Please confirm the pressing condition released lastly, and follow it.</p>