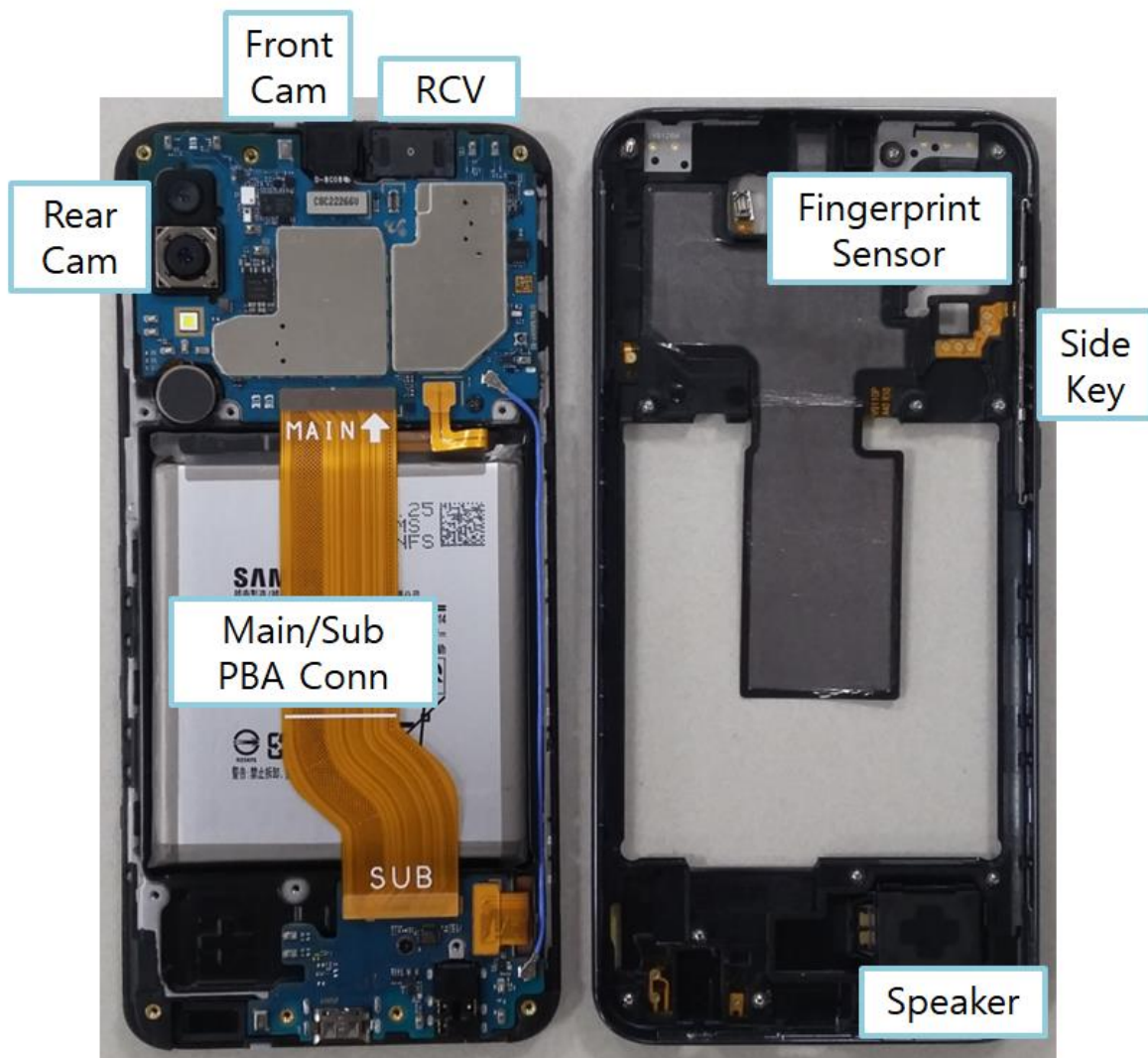

7. Level 2 Repair

7-1. Components on the Rear Case



tamiraat.com منبع مقاله

7. Level 2 Repair

7-2. Pre-requisite


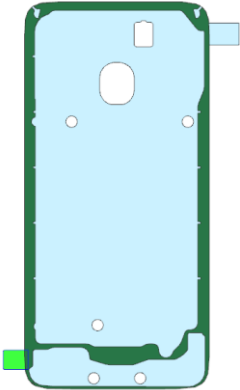
	
Tweezers / Disass'y Stick / Screw Driver	Anti-static Gloves
	
Anti-static Mat	Hot Plate
	
A OCTA Disassembly Holder	OCTA Disassembly Upper
	
Ethyl Alcohol	Cotton Swab



tamiraat.com منبع مقاله

7. Level 2 Repair

7-3. Parts which must be changed after repair

BOM Description & part code	Image	Remarks
Fingerprint Tape [GH81-16716A]		Whenever re-assemble Fingerprint. Remove old tape and use new tape
TAPE REAR DECO [GH81-16847A]		Whenever re-assemble Back Cover. Remove old tape and use new tape

7. Level 2 Repair

7-4. Disassembly

<p>1 Remove SIM/SD Tray</p> 	<p>2 Remove Rear Cover SIM/SD area → Upper → Right → Below</p> 
<p>* Caution Be care of scratch</p>	<p>* Caution Be care of scratch</p>
<p>3 Remove Finger print FPCB using tool and detach Finger print</p> 	<p>4 Remove all 13 points of Rear Screws</p> 
<p>* Caution 1) Be care of scratch 2) Be care of Rear and Finger print damage</p>	<p>* Caution Be care of Rear damage</p>

7. Level 2 Repair

5

Remove 1 PBA screw

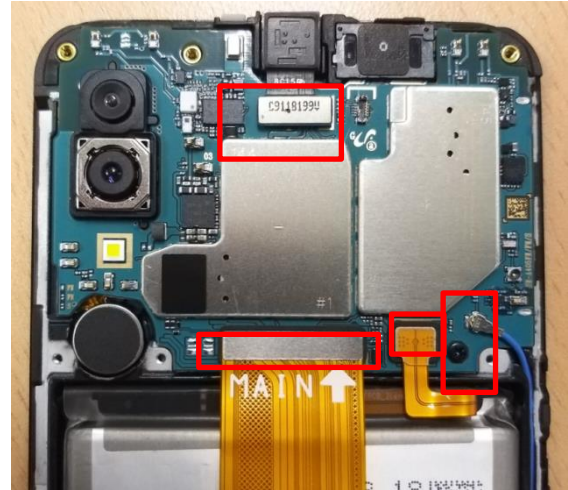


※ Caution

Be careful not to damage the PBA

6

Remove the PBA and C to C FPCB and Batt Conn and BLACK, Blue coaxial cable and VT Camera.

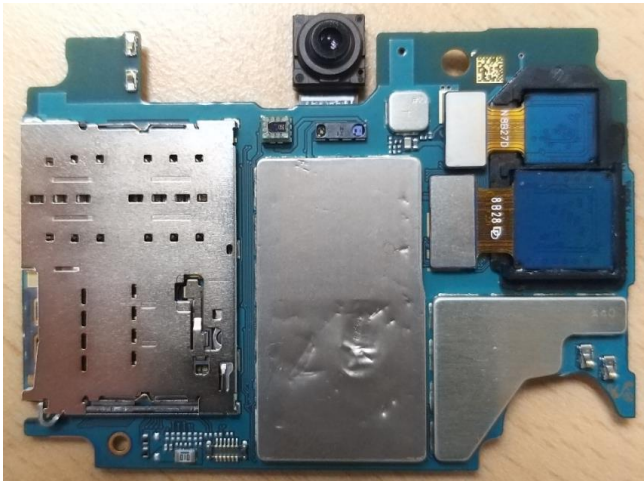


※ Caution

Be care of several kinds of damage at PBA and FPCB.

7

Remove CAM connectors



※ Caution

Be careful not to damage the Camera Module

8

Detach RCV from Front Ass'y.



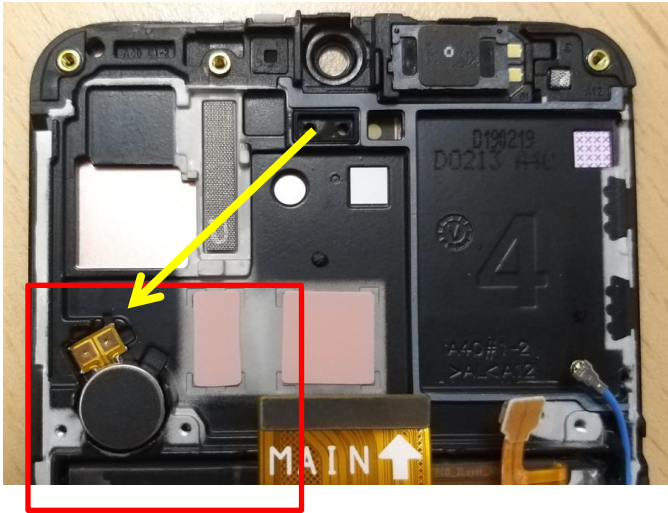
※ Caution

Be careful not to damage the RCV.

7. Level 2 Repair

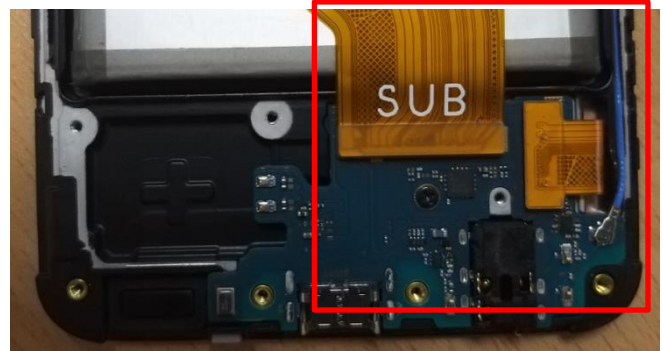
9

Detach Motor from Front Ass'y.



10

Remove C to C FPCB and BLUE Coaxial cable.



※ Caution

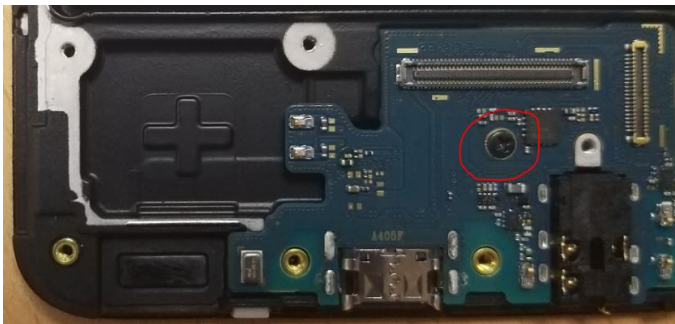
Be careful not to damage the Motor.

※ Caution

Be careful not to damage the C to C FPCB and BLACK, WHITE coaxial cable.

11

Detach serew and the Sub PBA.



12

Detach SPK from Rear Ass'y



※ Caution

Be careful not to damage HB PBA and the Sub PBA.

※ Caution

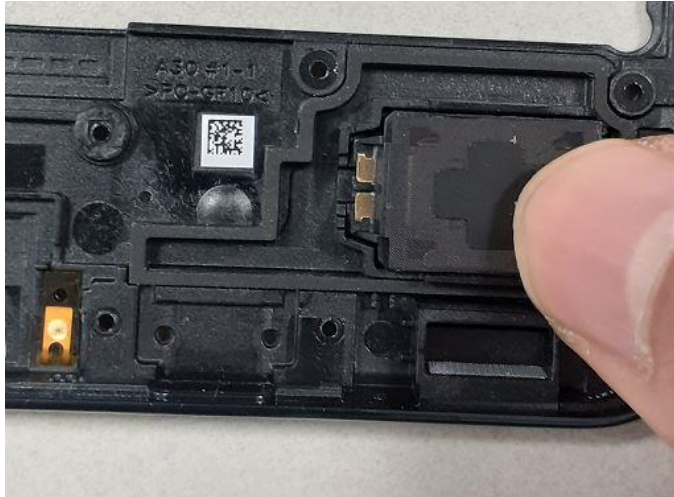
Be careful not to damage the SPK.

7. Level 2 Repair

7-5. Assembly

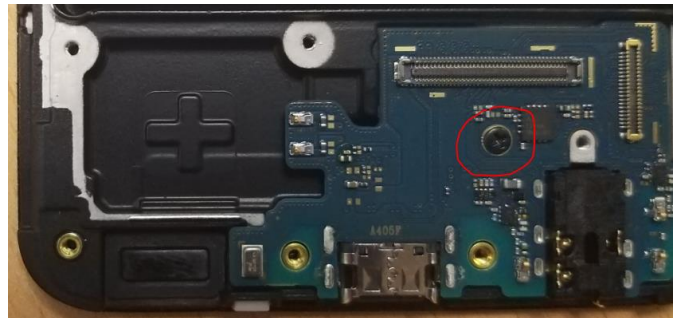
1

Attach SPK on Rear Ass'y.



2

Attach screw and Sub PBA on Front Ass'y.



※ **Caution**
Be care of SPK damage.

※ **Caution**
Be care of Sub PBA damage.

3

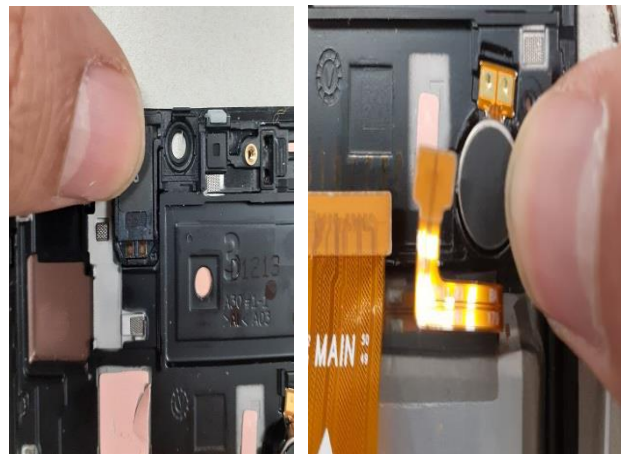
Attach C to C FPCB and Blue coaxial cable.



※ **Caution**
Please keep the guide line for C to C FPCB
and BLACK, WHITE coaxial Cable.

4

Attach Motor and Receiver in upper area

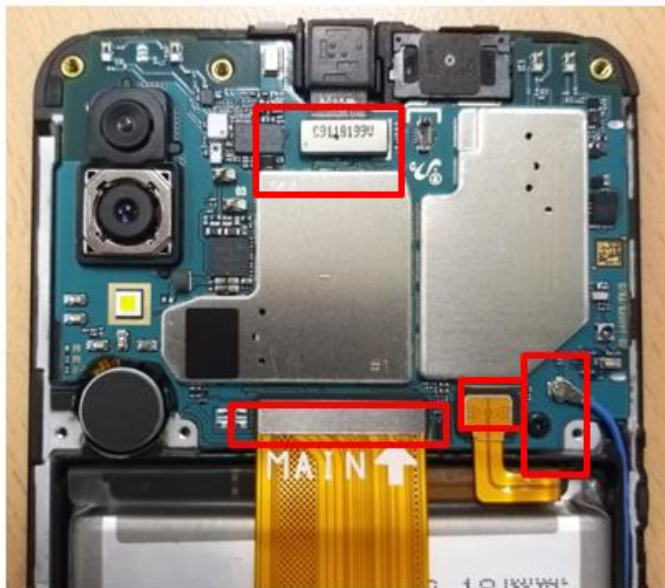


※ **Caution**
1) Be care of scratch CAM lens
2) Be care of damage each part.

7. Level 2 Repair

5

Assemble the PBA and C to C FPCB and Batt Conn and BLUE coaxial cable and VT Camera.



6

Screw insertion 1 Point.
* Torque Value : 1.2 ±7%



※ Caution
Check for each connector connection

※ Caution
Be care of PBA damage.

7

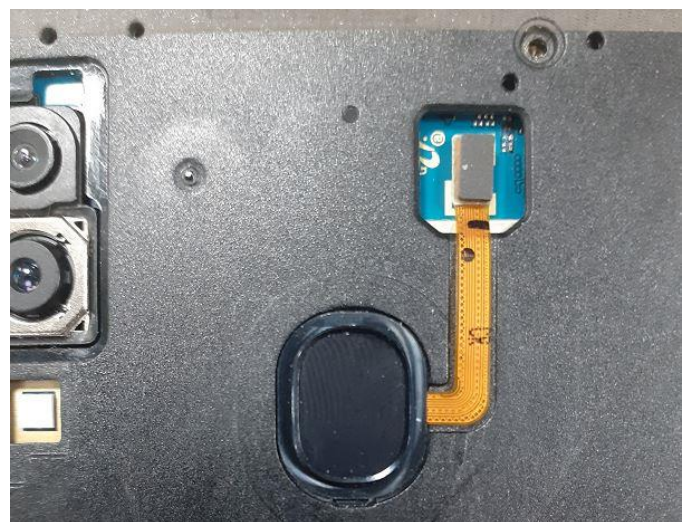
Assemble Rear and screw insertion 13 point
* Torque Value : 1.2 ±7%



※ Caution
Be care of PBA damage

8

Assemble Finger print module and connect FPCB



※ Caution
Be care of Finger Print FPCB damage.

7. Level 2 Repair

9

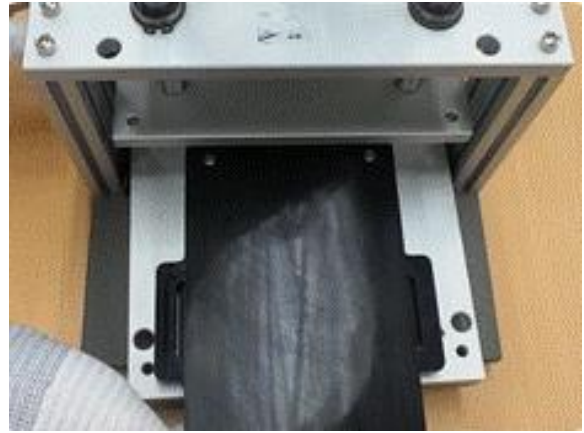
Assemble cover rear and insert SIM/SD Tray



※ Caution
Be care of scratch Rear cover

10
0

Press using press jig



※ Caution
Press with 5.5kgf/cm²±3% for 12 seconds