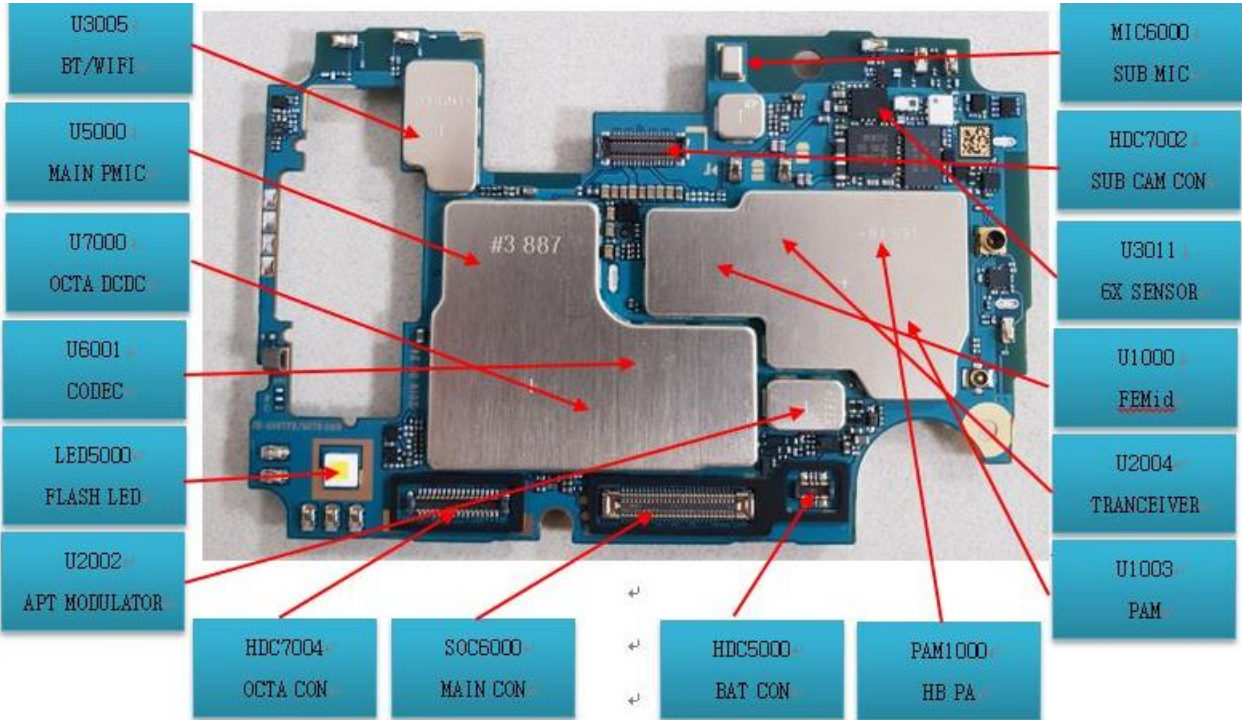


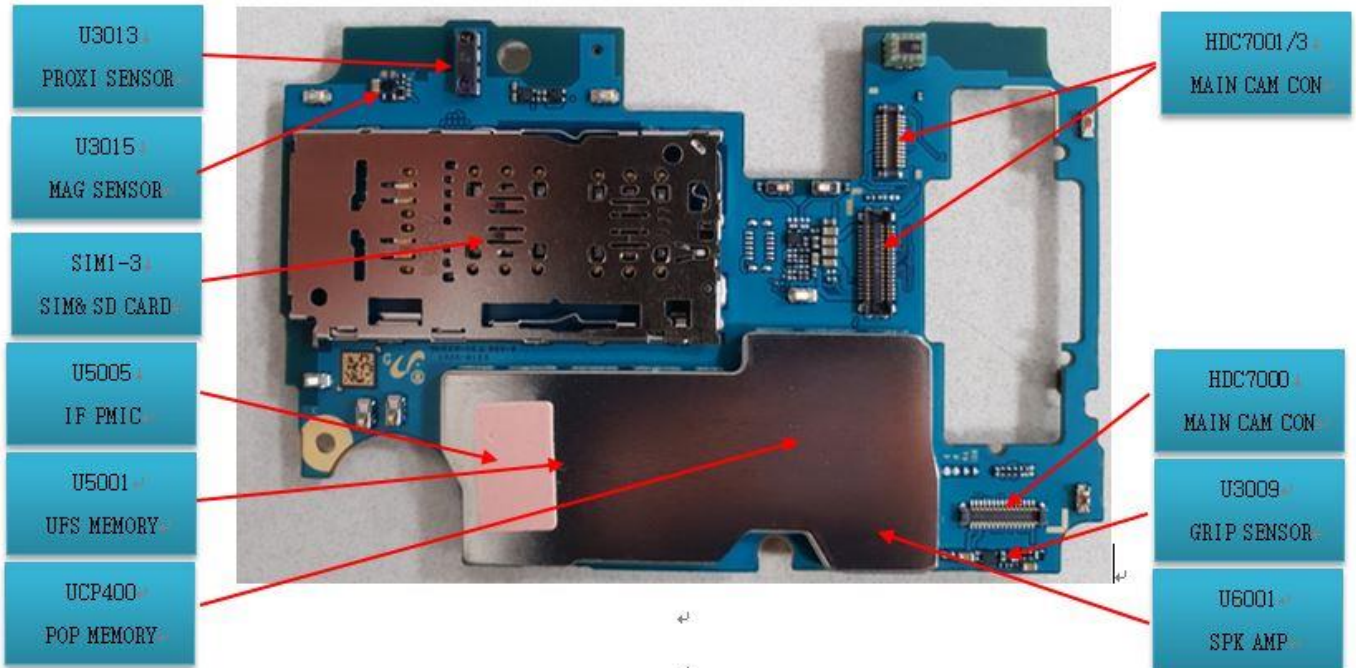
8. Level 3 Repair

8-1. Components Layout

MAIN PBA (TOP SIDE)

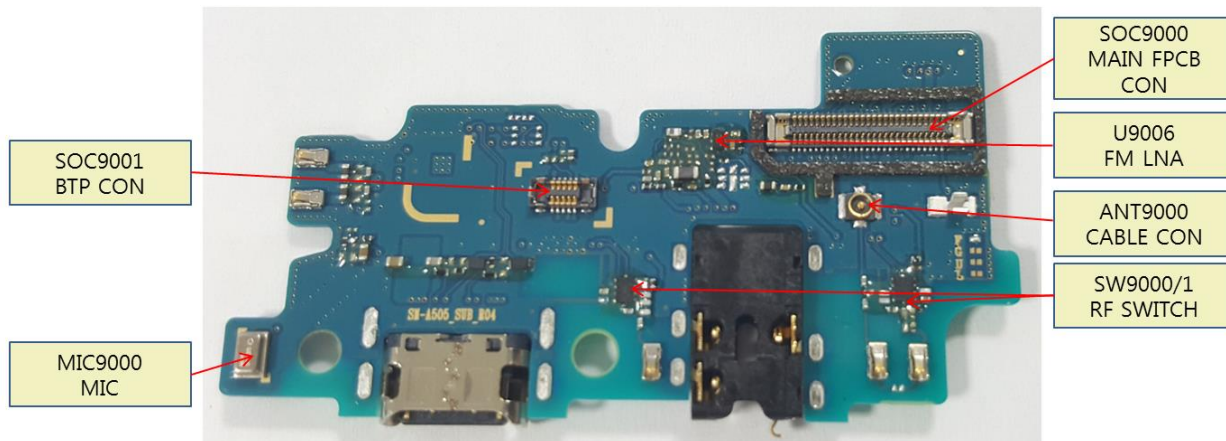


MAIN PBA (BOTTOM SIDE)

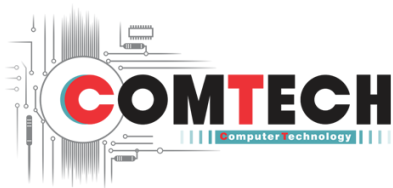
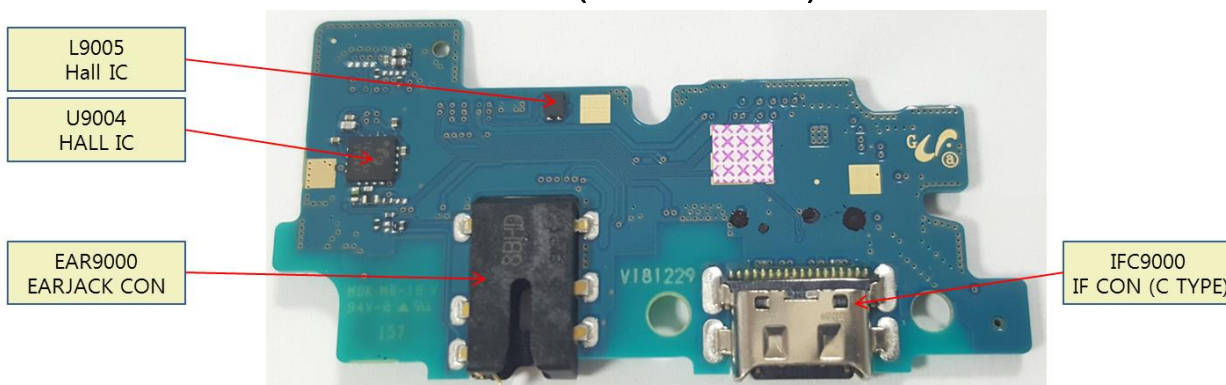


8. Level 3 Repair

SUB PBA (TOP SIDE)



SUB PBA (BOTTOM SIDE)

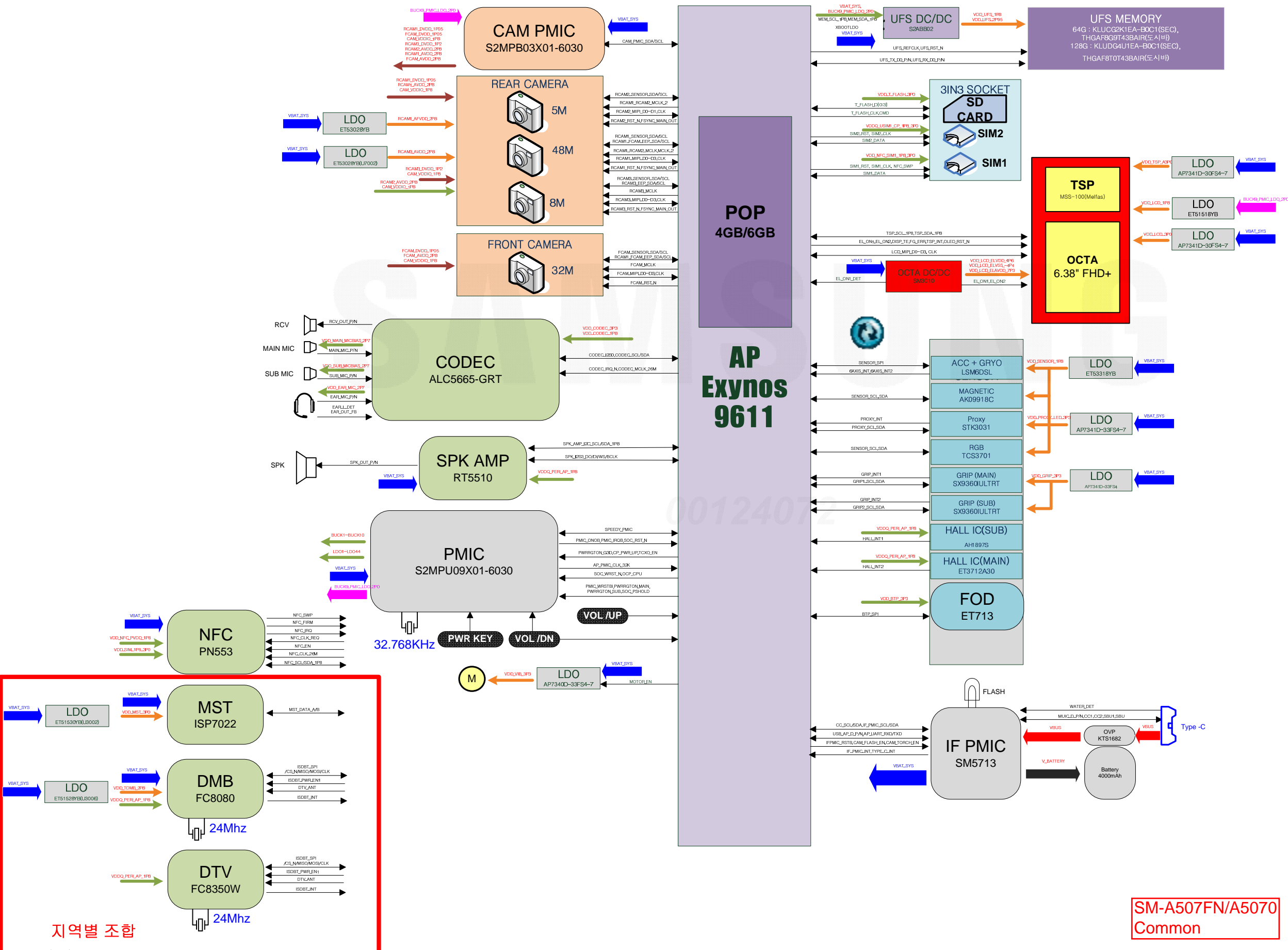


tamiraat.com منبع مقاله

Confidential and proprietary-the contents in this service guide subject to change without prior notice

Distribution, transmission, or infringement of any content or data from this document without Samsung's written authorization is strictly prohibited.

A50s BB Block Diagram REV0.0A



지역별 조합

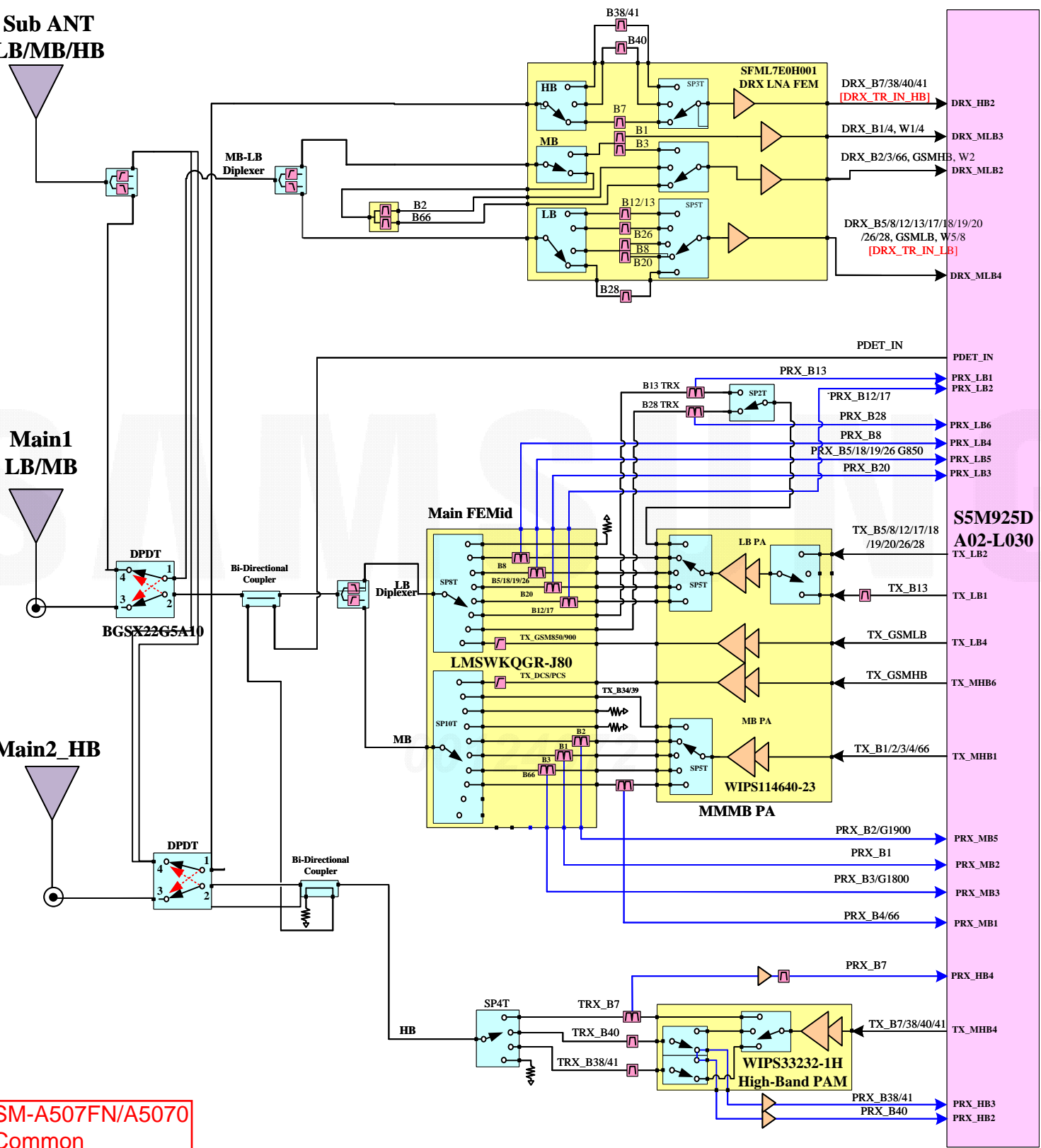
SM-A507FN/A5070
Common

Sub ANT
LB/MB/HB

Main1
LB/MB

Main2_HB

SM-A507FN/A5070
Common



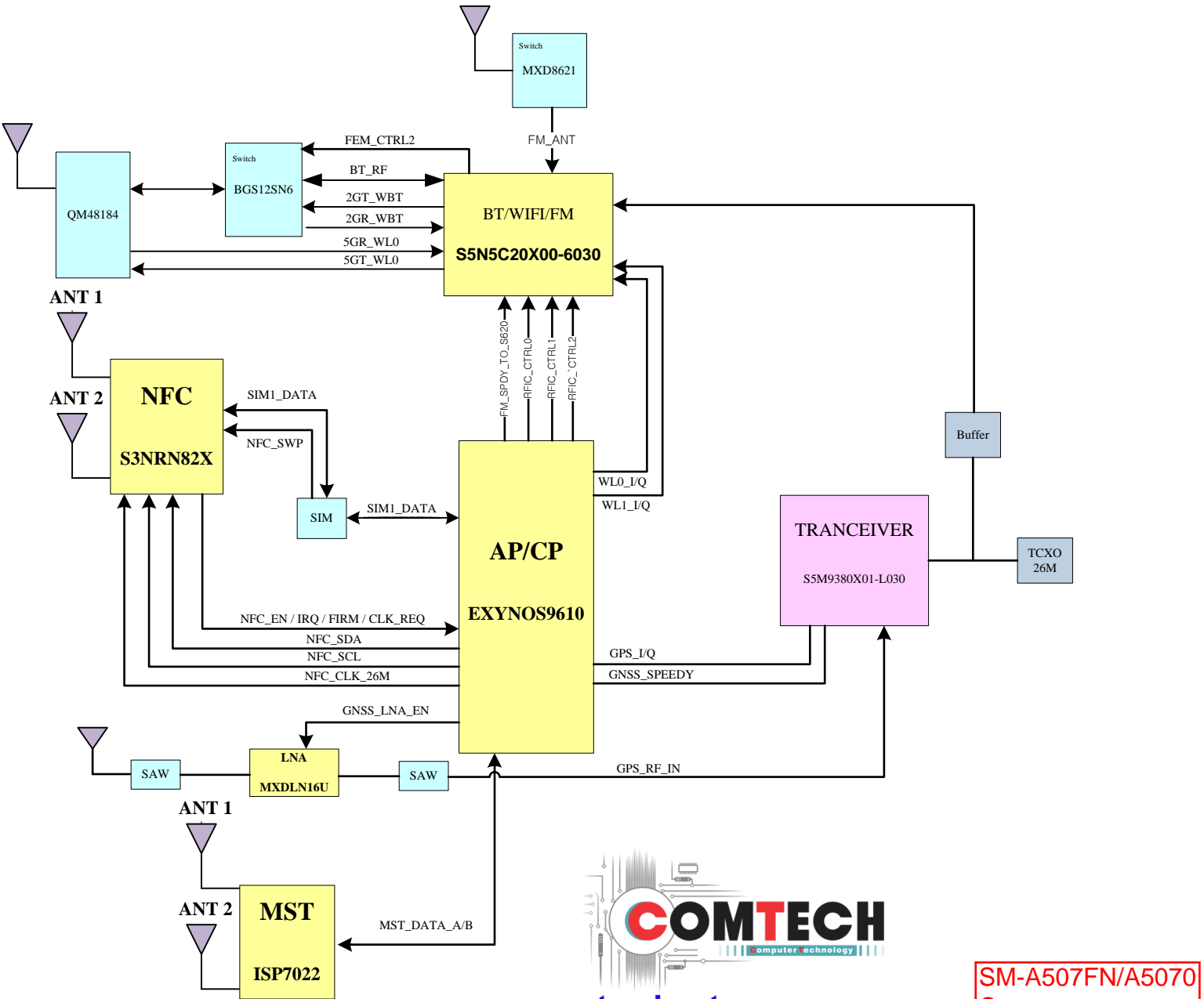
- DRX_B7/38/40/41 [DRX_TR_IN_HB]
- DRX_HB2
- DRX_B1/4, W1/4
- DRX_MLB3
- DRX_B2/3/66, GSMHB, W2
- DRX_MLB2
- DRX_B5/8/12/13/17/18/19/20/26/28, GSMLB, W5/8 [DRX_TR_IN_LB]
- DRX_MLB4

- PDET_IN
- PDET_IN
- PRX_LB1
- PRX_LB2
- PRX_LB6
- PRX_LB4
- PRX_LB5
- PRX_LB3

S5M925D
A02-L030

- TX_B5/8/12/17/18/19/20/26/28
- TX_LB2
- TX_LB1
- TX_LB4
- TX_GSMHB
- TX_MHB6
- TX_B1/2/3/4/66
- TX_MHB1
- PRX_B2/G1900
- PRX_MB5
- PRX_B1
- PRX_MB2
- PRX_B3/G1800
- PRX_MB3
- PRX_B4/66
- PRX_MB1
- PRX_B7
- PRX_HB4
- TX_B7/38/40/41
- TX_MHB4
- PRX_B38/41
- PRX_HB3
- PRX_B40
- PRX_HB2

A50s Connectivity Block Diagram



SM-A507FN/A5070
Common

U3013

U3008

HDC7001

SIM6003

SIM6001
SIM600UP

SIM6002

HDC7002

HDC4000

CON6000

UCP400

BH6001

SC6005

UME5000

U5005

HDC7000

L5013

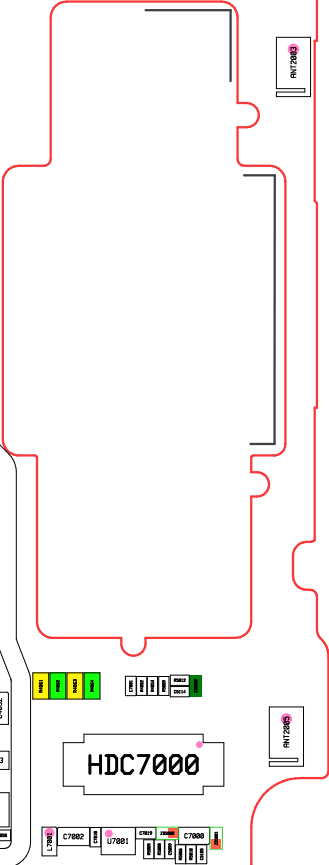
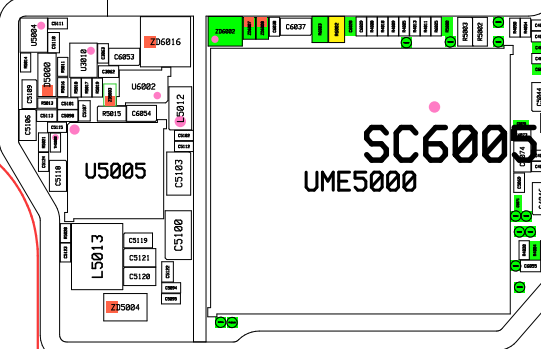
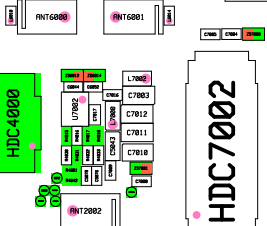
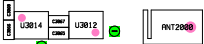
L6001

JTAG4000

BH6000

C7002

C7000



SM-A507FN/A507Q
Common

U3002
SC6002

HDC7003

SC6000

COC6001

SUS6000

L5007
C5960
C5864
L5009
L5004
L5008
L5003
L5006
L5001
L5005
L5018

U500

U7003
C7002
C7003
C7015
C7016
C7017
C7018
C7019
C7020
C7021
C7022
C7023
C7024
C7025
C7026

U2004

SC6003
U1003
PAM1000
F1007
F1009
F1005
F1001
F1002
C1004
C1005
C1006
C1007
C1008
C1009
C1010
C1011
C1012
C1013
C1014
C1015
C1016
C1017
C1018
C1019
C1020
C1021
C1022
C1023
C1024
C1025
C1026
C1027
C1028
C1029
C1030
C1031
C1032
C1033
C1034
C1035
C1036
C1037
C1038
C1039
C1040
C1041
C1042
C1043
C1044
C1045
C1046
C1047
C1048
C1049
C1050
C1051
C1052
C1053
C1054
C1055
C1056
C1057
C1058
C1059
C1060
C1061
C1062
C1063
C1064
C1065
C1066
C1067
C1068
C1069
C1070
C1071
C1072
C1073
C1074
C1075
C1076
C1077
C1078
C1079
C1080
C1081
C1082
C1083
C1084
C1085
C1086
C1087
C1088
C1089
C1090
C1091
C1092
C1093
C1094
C1095
C1096
C1097
C1098
C1099
C1100

SC6004

L7008

U6001

CNT9000
T7000
T7001
T7002

C5854
L5003
C5858
C5803
C5852
C4883
C4885
C4809
C4801
C4802
C4803
C4804
C4805
C4806
C4807
C4808
C4809
C4810
C4811
C4812
C4813
C4814
C4815
C4816
C4817
C4818
C4819
C4820
C4821
C4822
C4823
C4824
C4825
C4826
C4827
C4828
C4829
C4830
C4831
C4832
C4833
C4834
C4835
C4836
C4837
C4838
C4839
C4840
C4841
C4842
C4843
C4844
C4845
C4846
C4847
C4848
C4849
C4850
C4851
C4852
C4853
C4854
C4855
C4856
C4857
C4858
C4859
C4860
C4861
C4862
C4863
C4864
C4865
C4866
C4867
C4868
C4869
C4870
C4871
C4872
C4873
C4874
C4875
C4876
C4877
C4878
C4879
C4880
C4881
C4882
C4883
C4884
C4885
C4886
C4887
C4888
C4889
C4890
C4891
C4892
C4893
C4894
C4895
C4896
C4897
C4898
C4899
C4900
C4901
C4902
C4903
C4904
C4905
C4906
C4907
C4908
C4909
C4910
C4911
C4912
C4913
C4914
C4915
C4916
C4917
C4918
C4919
C4920

L7010

L7007

C7056

L5011

U5001

RFS1000
RFS1001
RFS1002
RFS1003
RFS1004

HDC7004

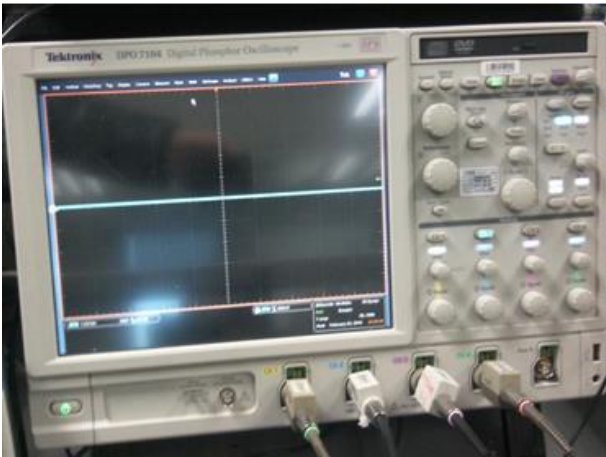
SOC6000

HDC5000



8. Level 3 Repair

8-3. Flow chart of Troubleshooting.



Oscilloscope



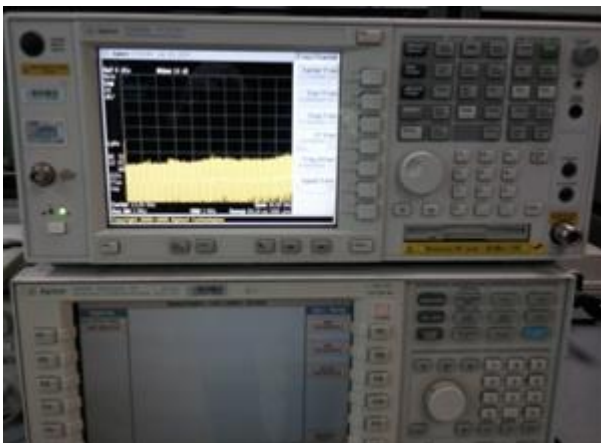
Digital Multimeter



Power Supply



+ driver, ESD Safe Tweezer



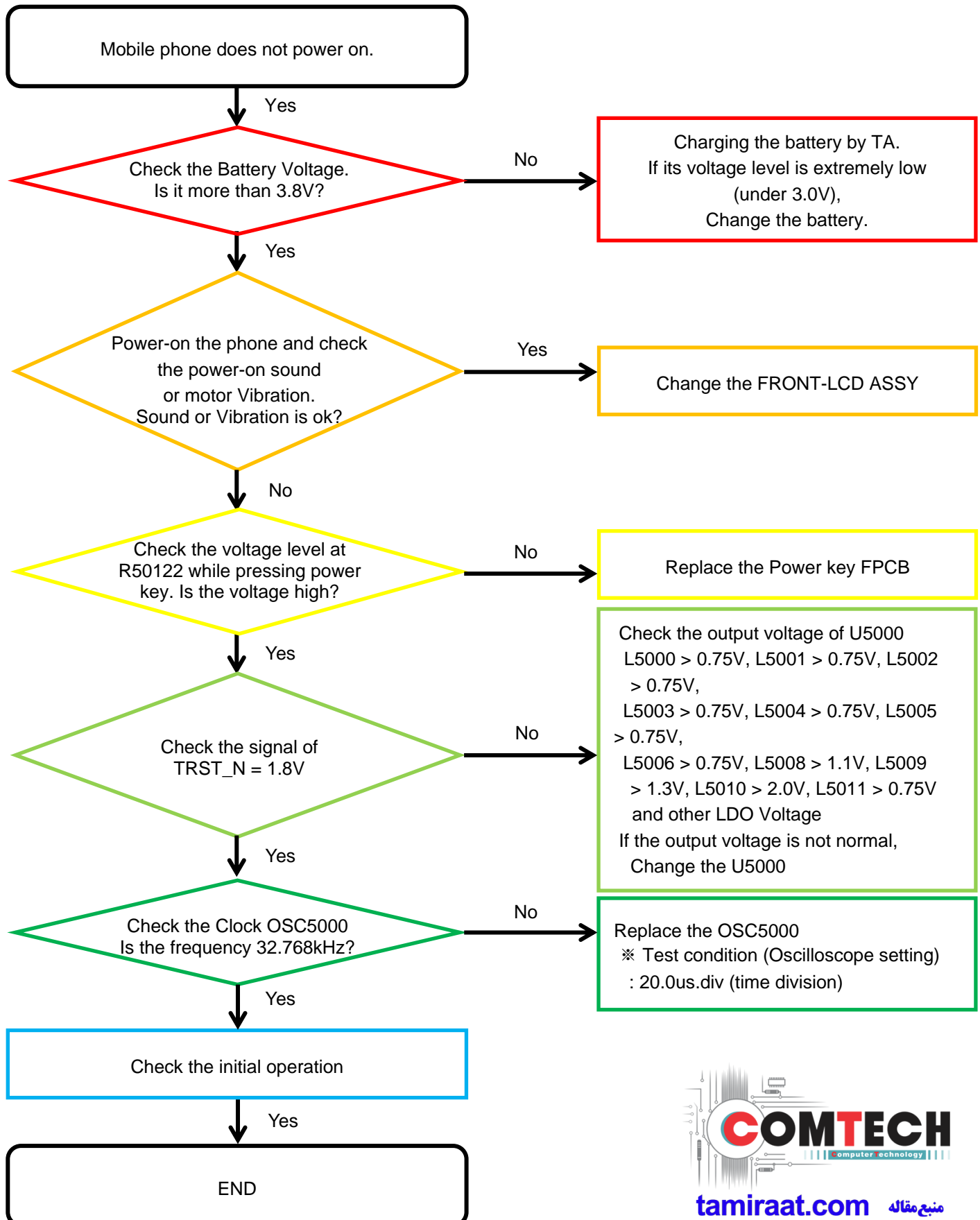
8960 & Spectrum Analyzer



Soldering iron

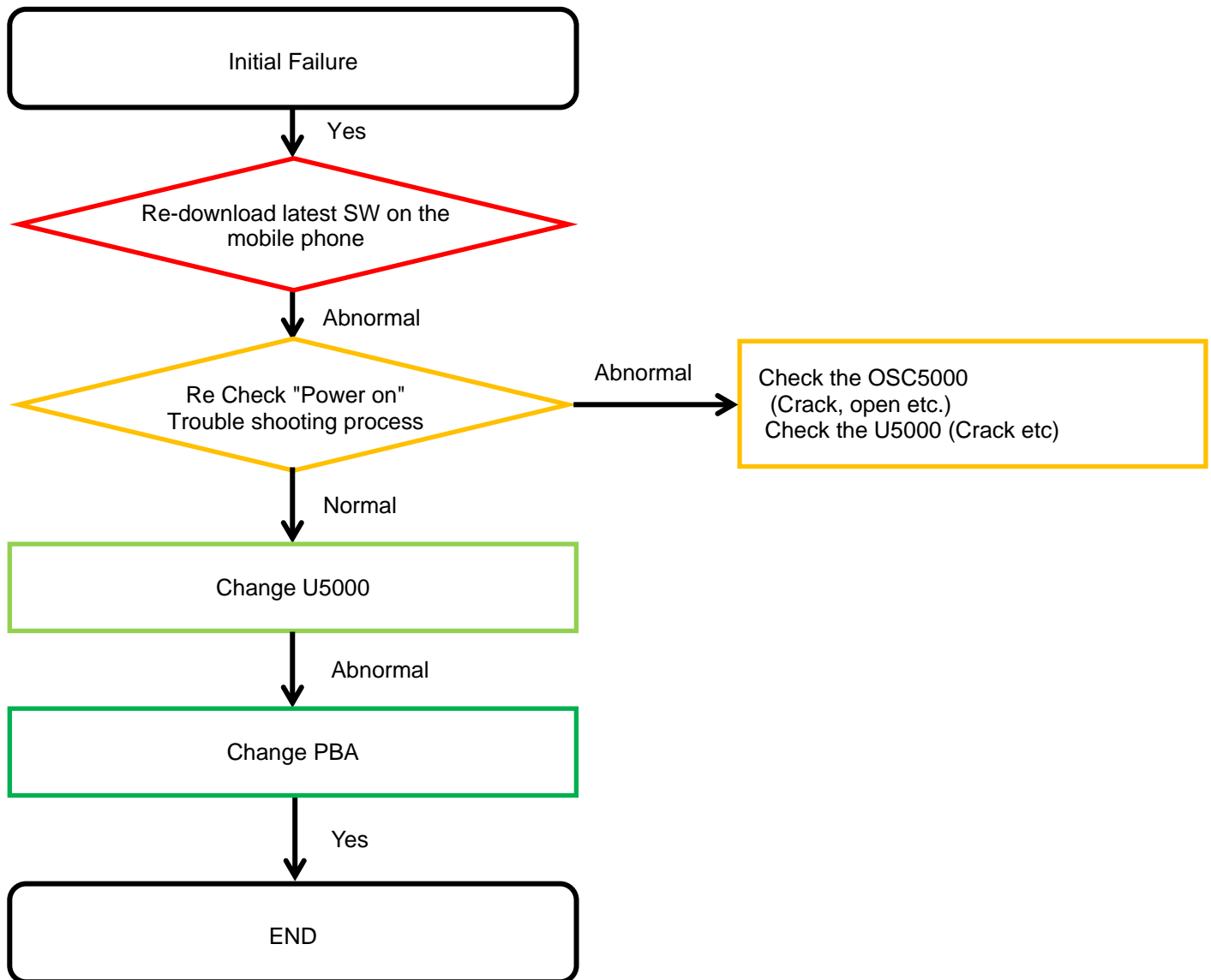
8. Level 3 Repair

8-4-1. Power On



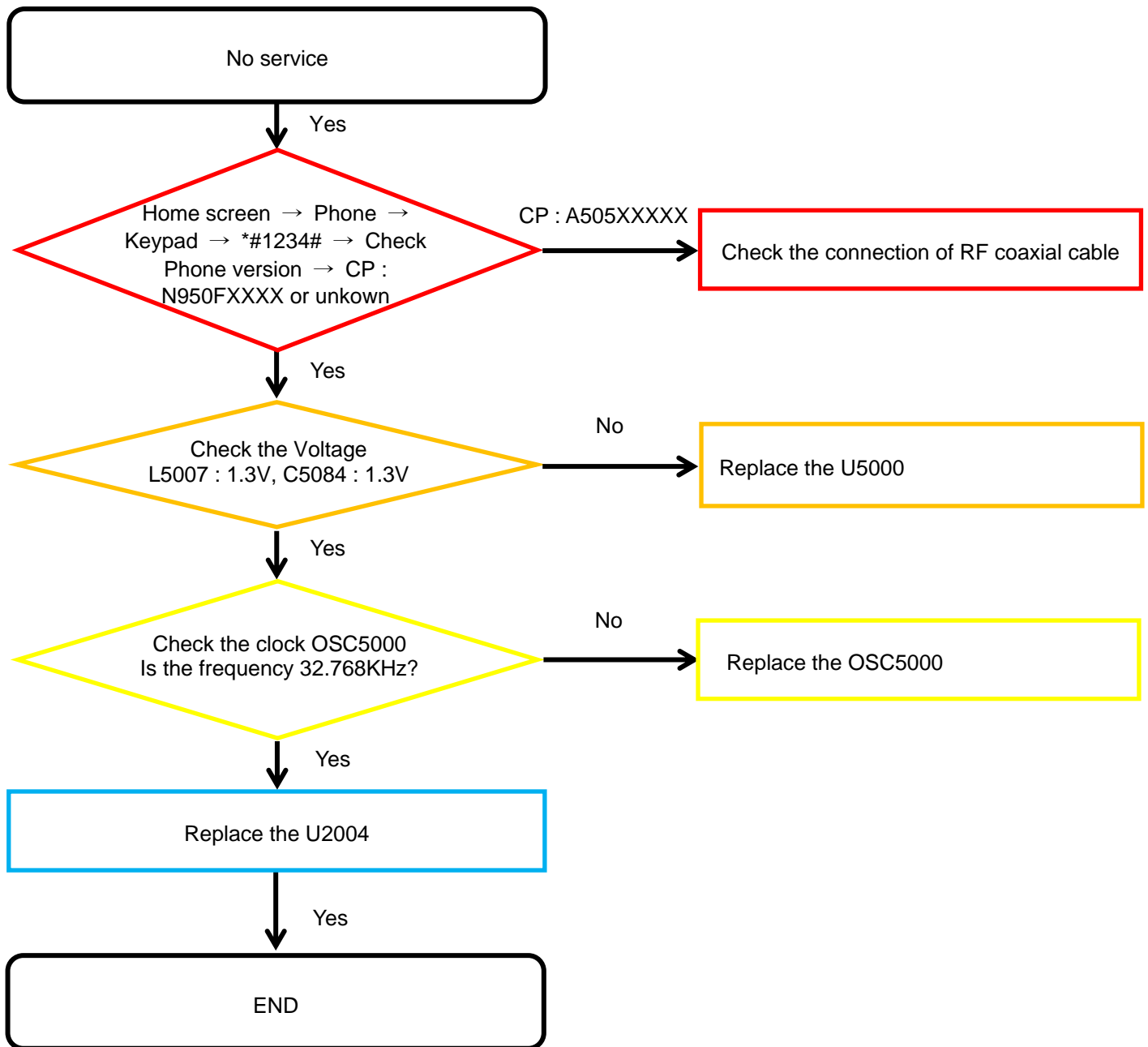
8. Level 3 Repair

8-4-2. Initial



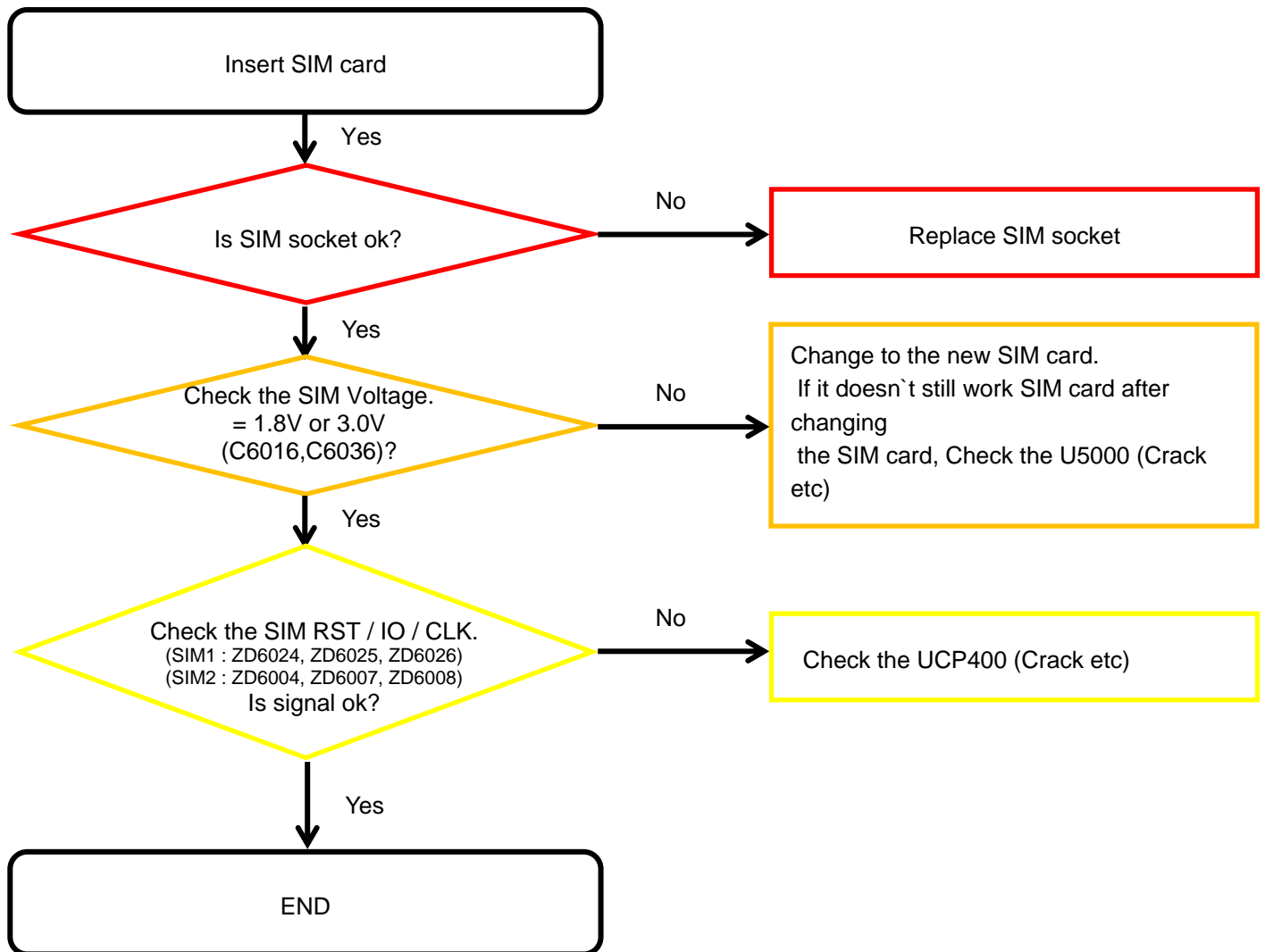
8. Level 3 Repair

8-4-3. No Service



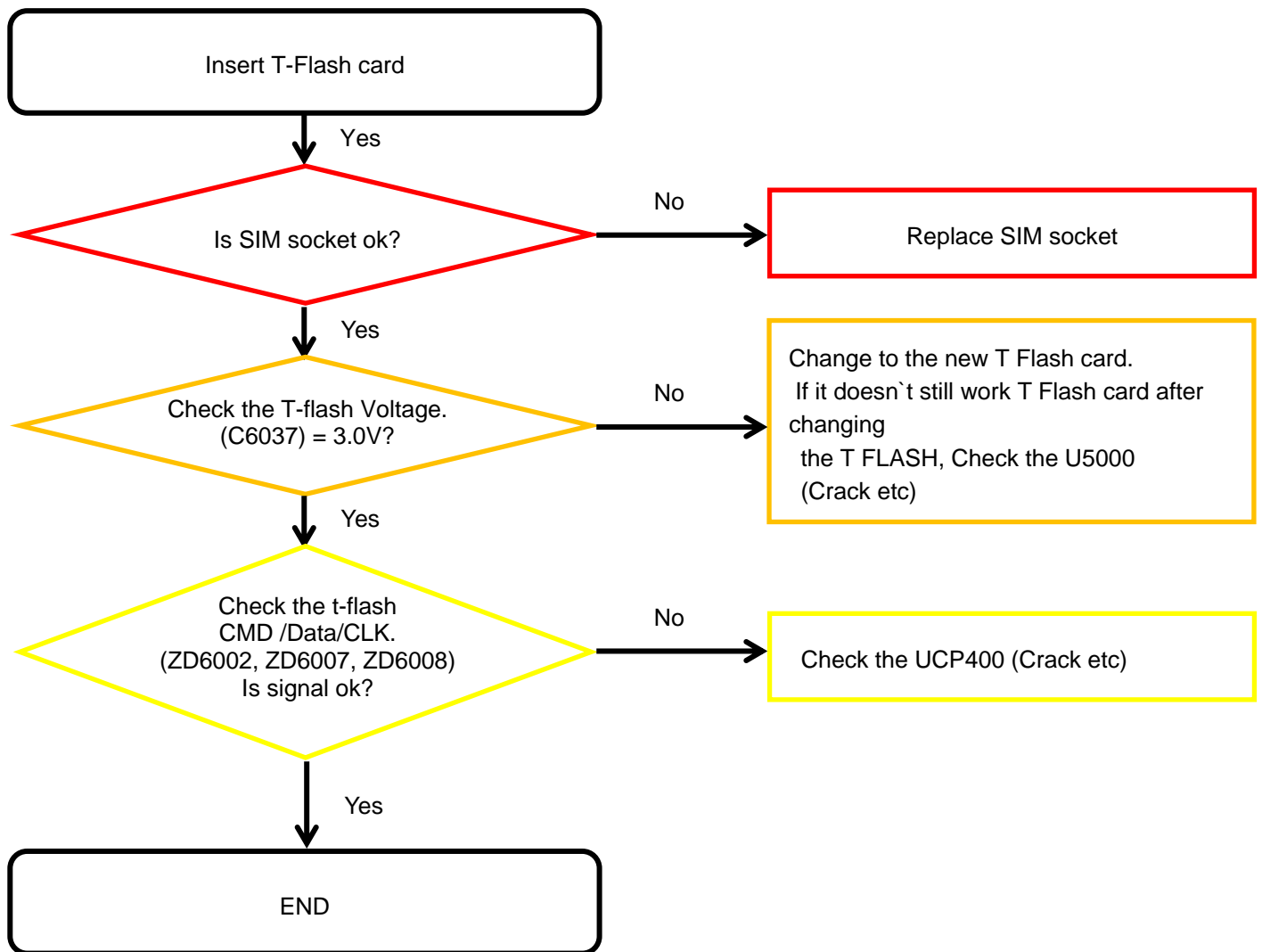
8. Level 3 Repair

8-4-4. SIM Part



8. Level 3 Repair

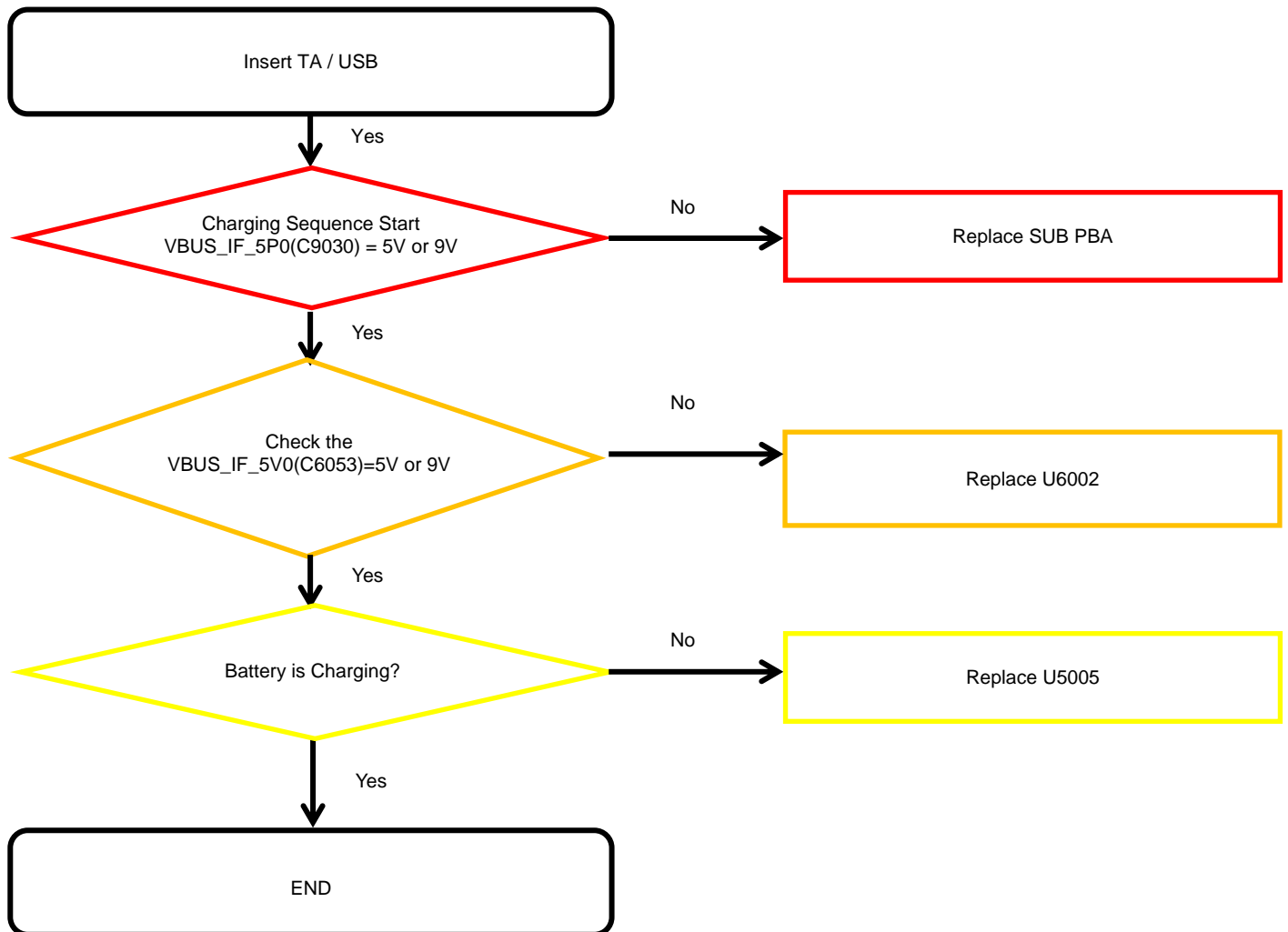
8-4-5. T-Flash Part



tamiraat.com منبع مقاله

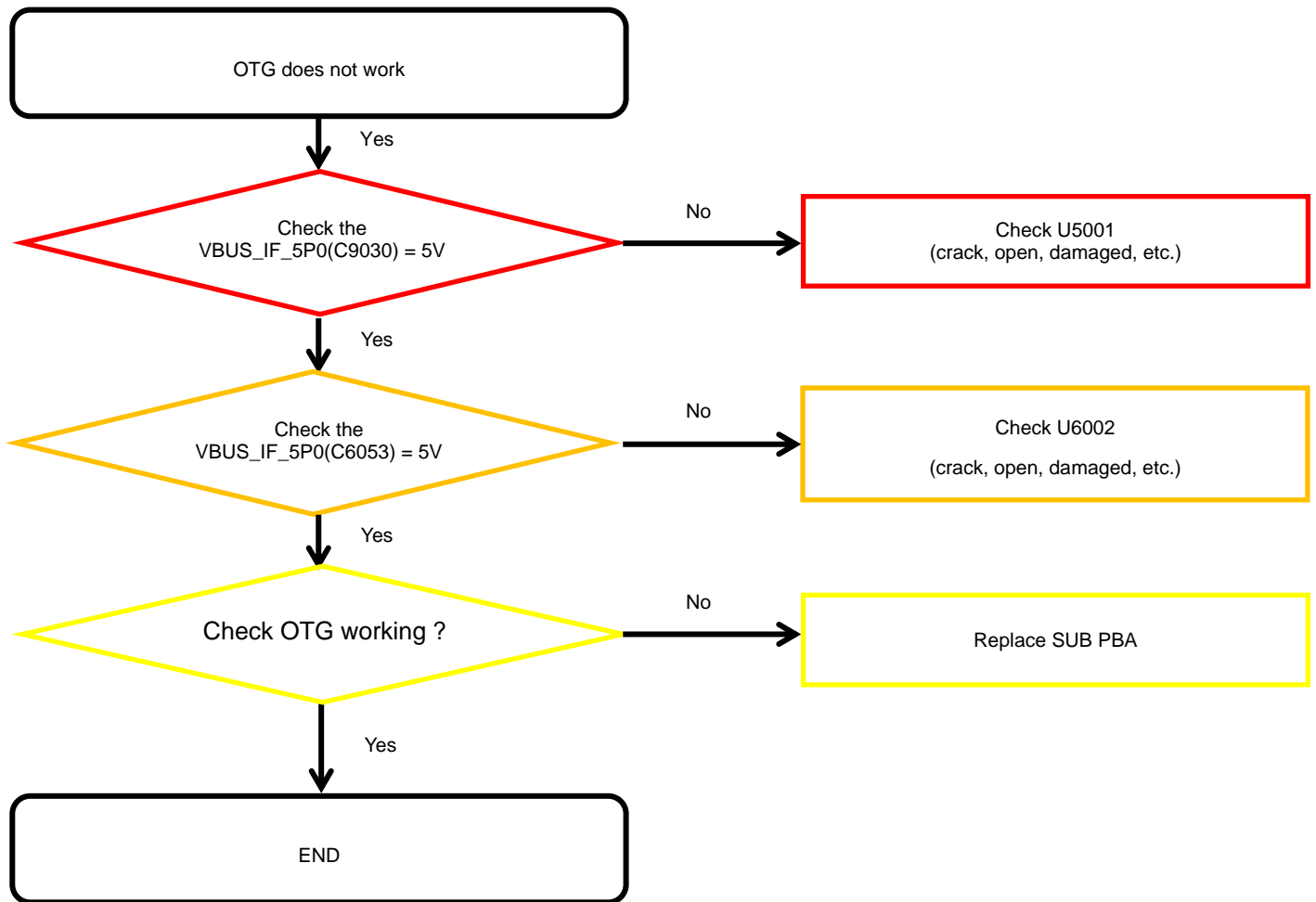
8. Level 3 Repair

8-4-6. Cable Charging Part



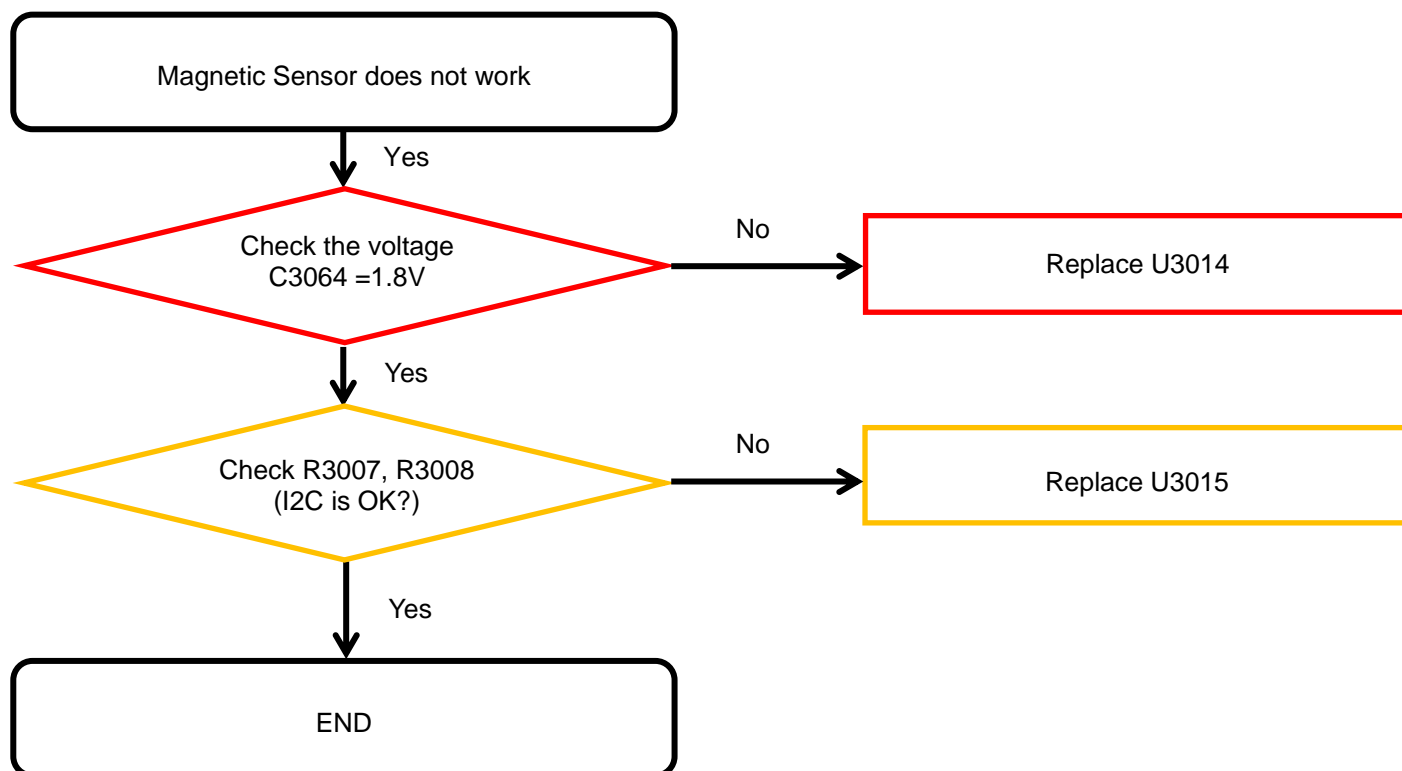
8. Level 3 Repair

8-4-7. OTG



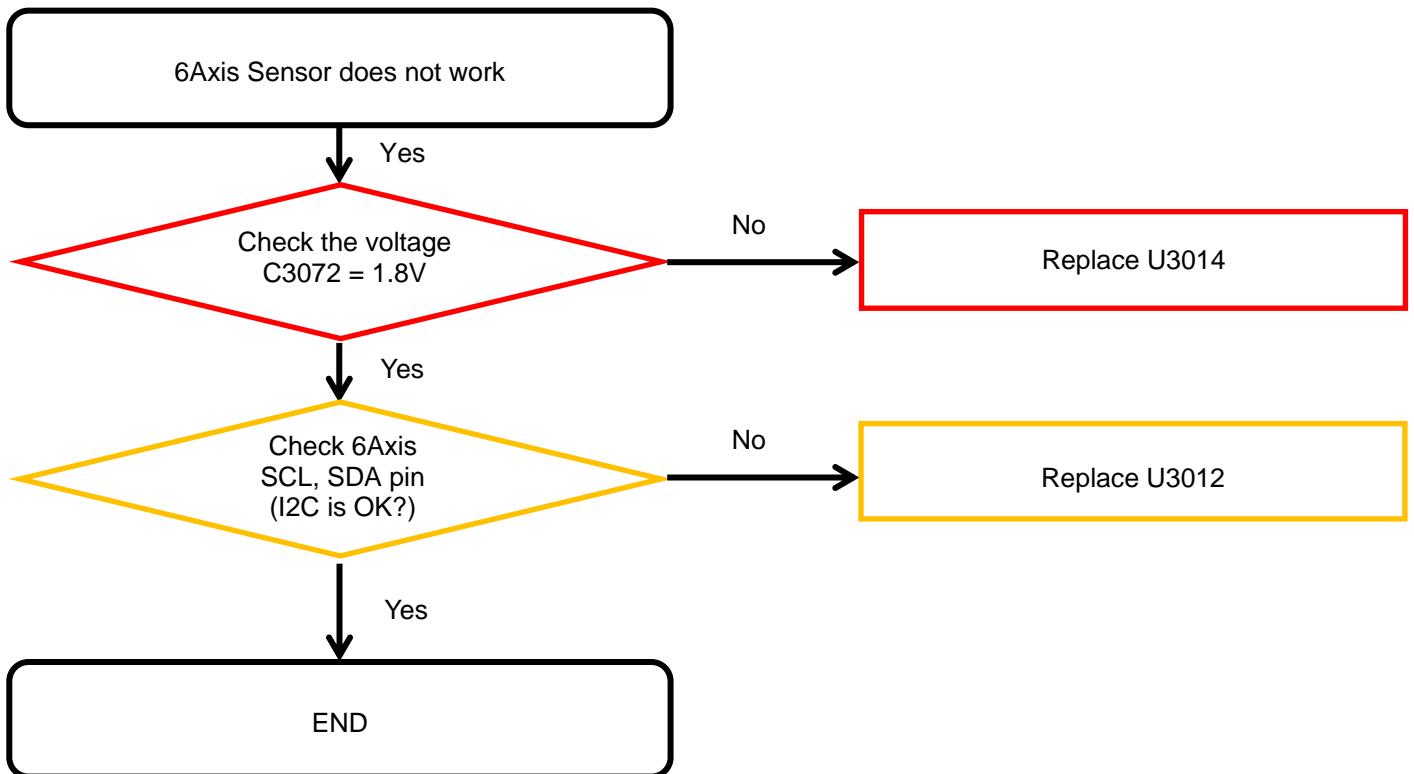
8. Level 3 Repair

8-4-8-1. Magnetic Sensor



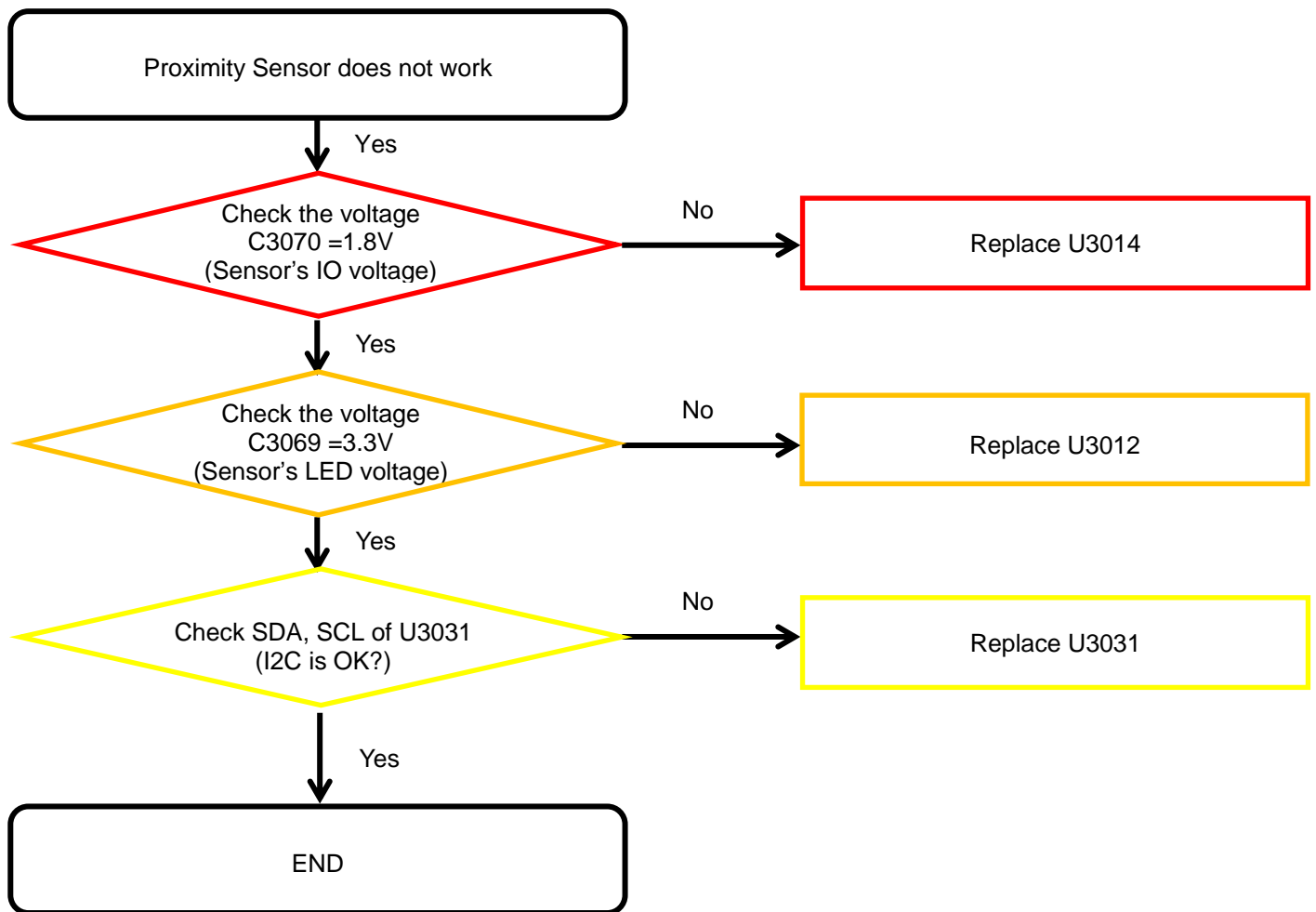
8. Level 3 Repair

8-4-8-2. 6Axis Sensor



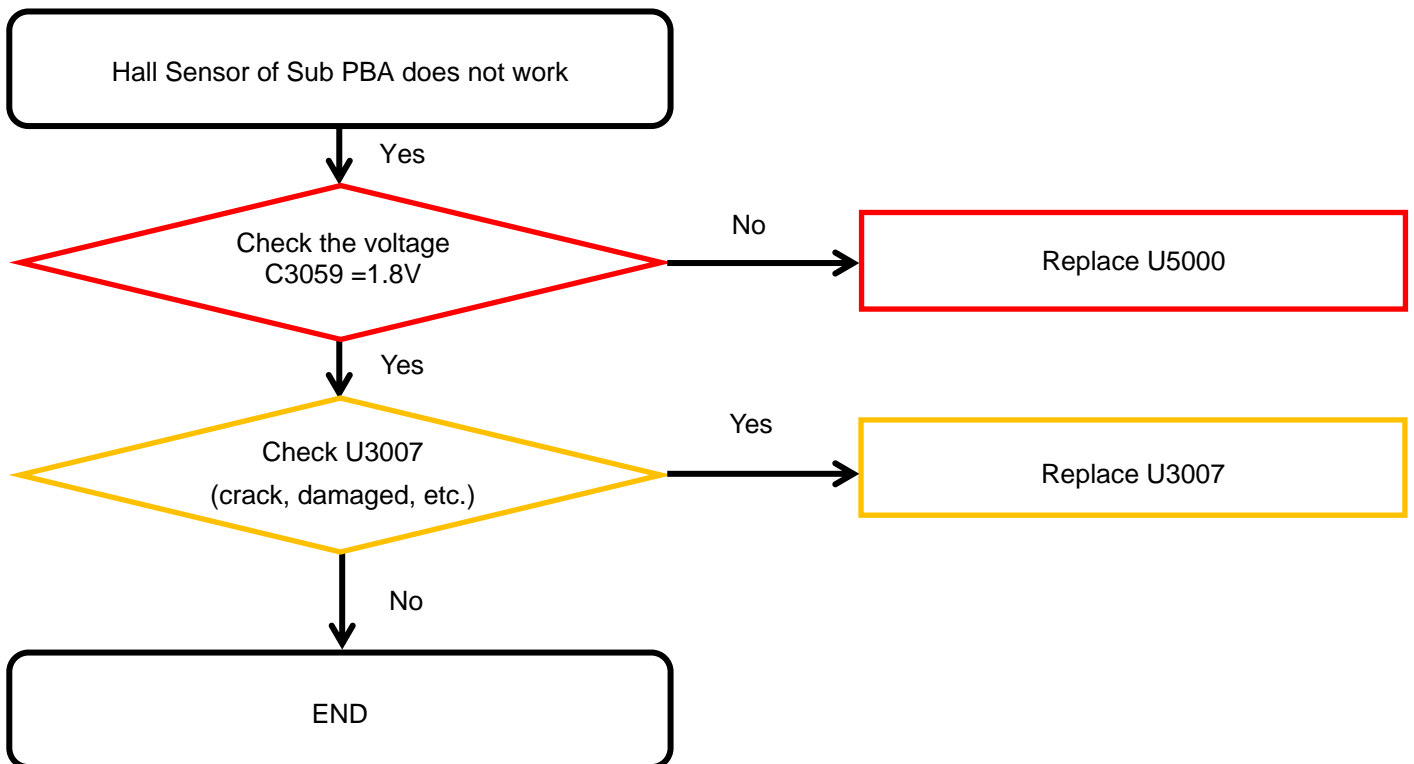
8. Level 3 Repair

8-4-8-3. Proximity



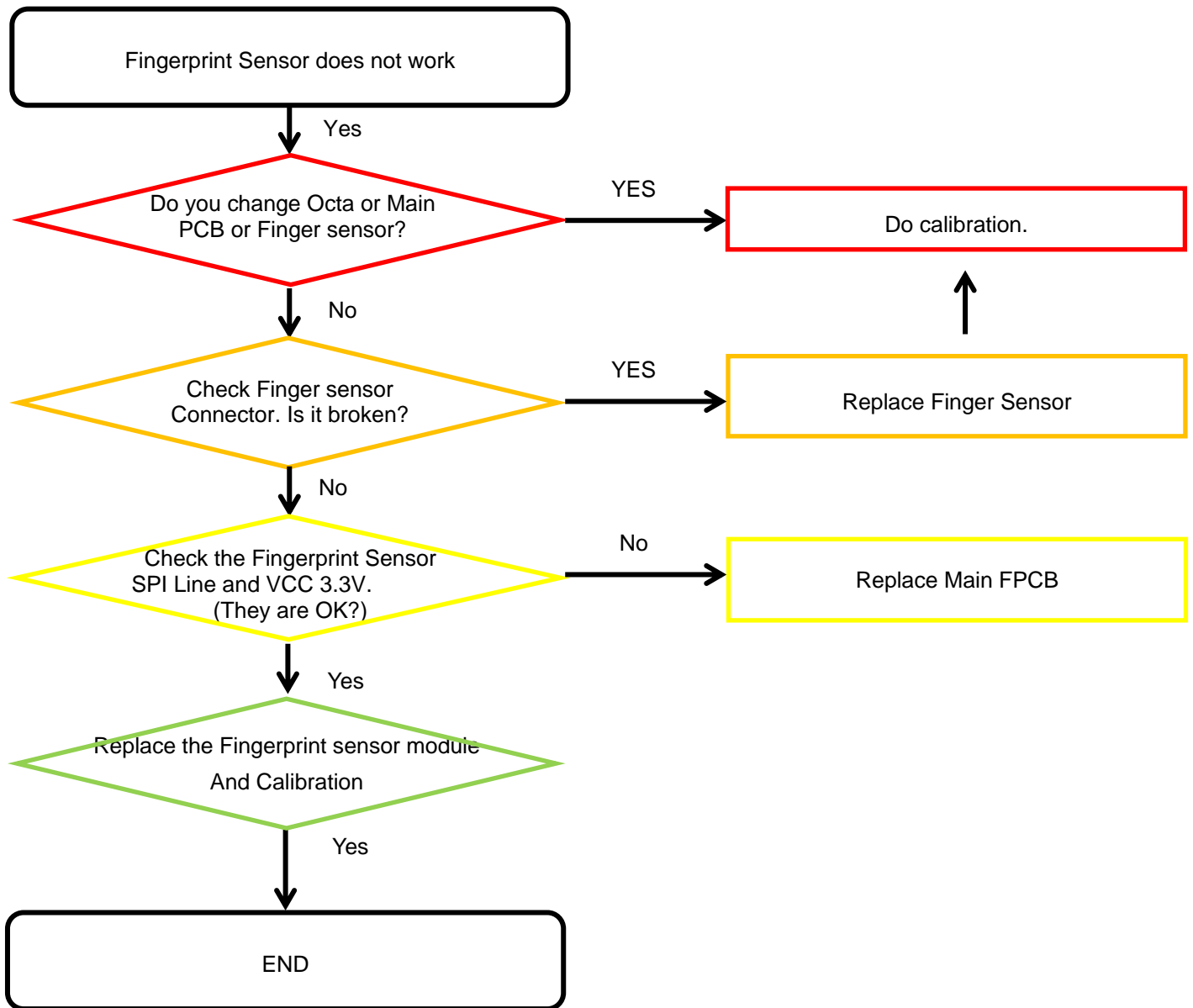
8. Level 3 Repair

8-4-8-4. Hall Sensor



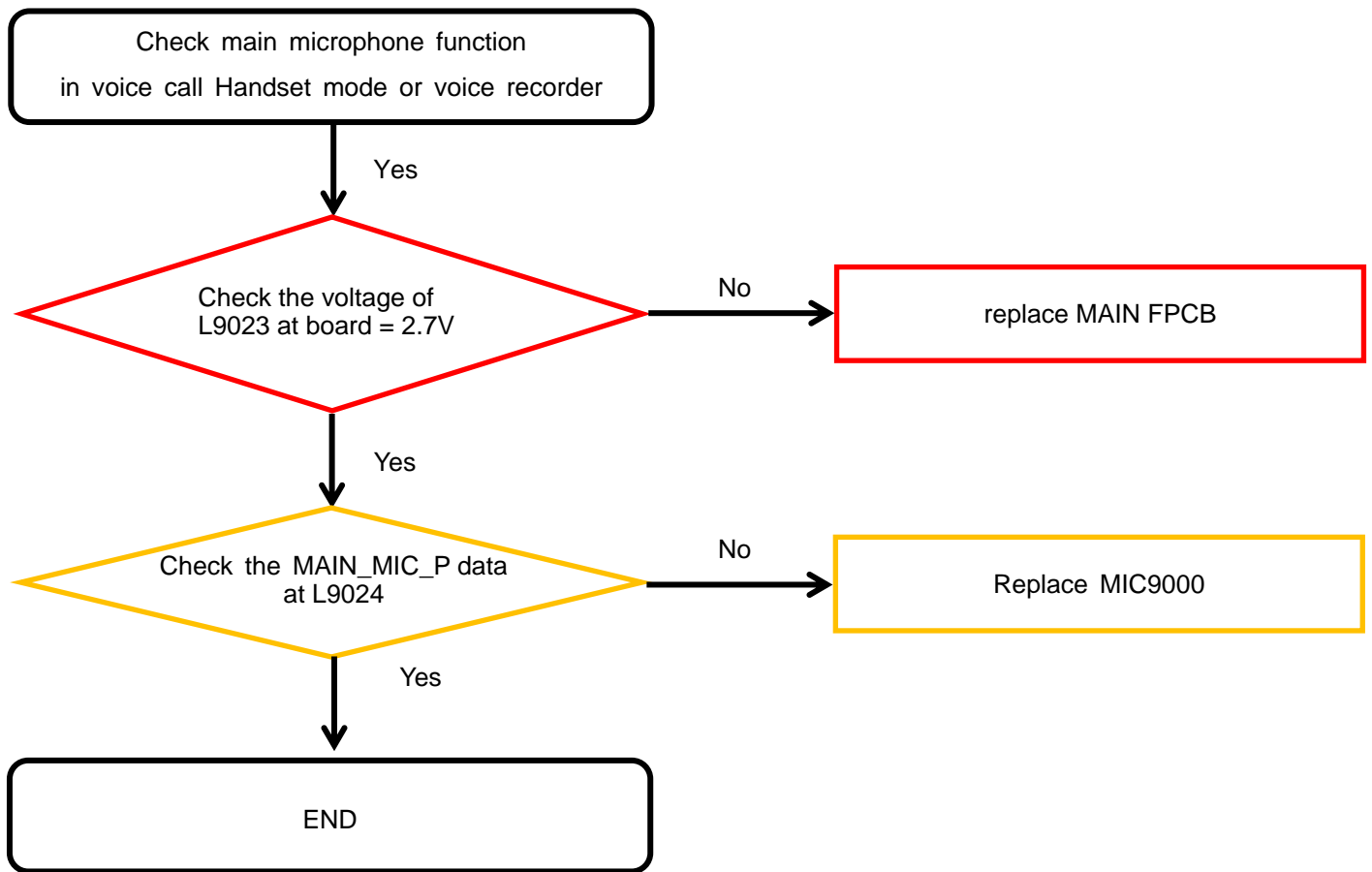
8. Level 3 Repair

8-4-8-5. Fingerprint Sensor



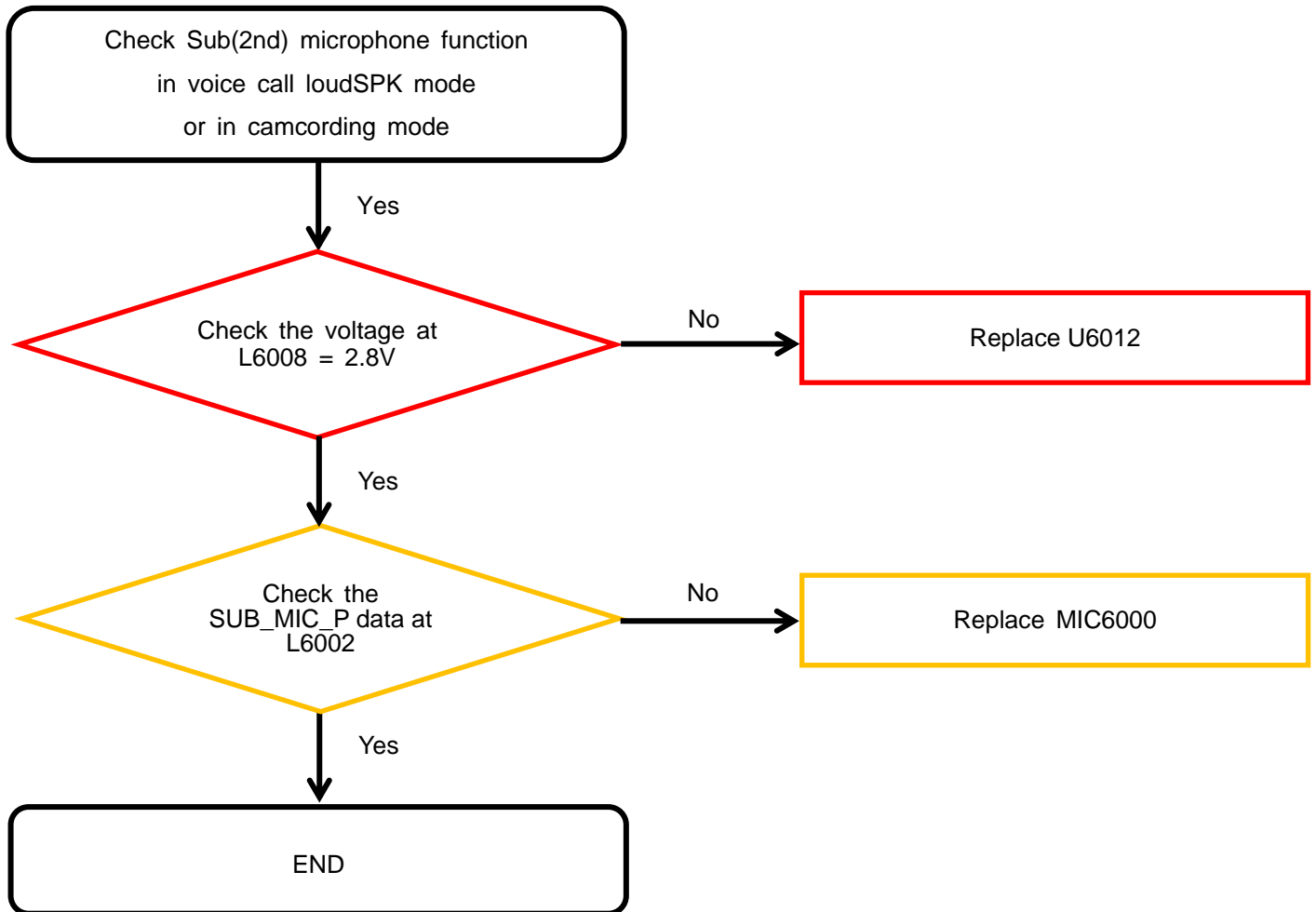
8. Level 3 Repair

8-4-9-1. Microphone Part - Main MIC



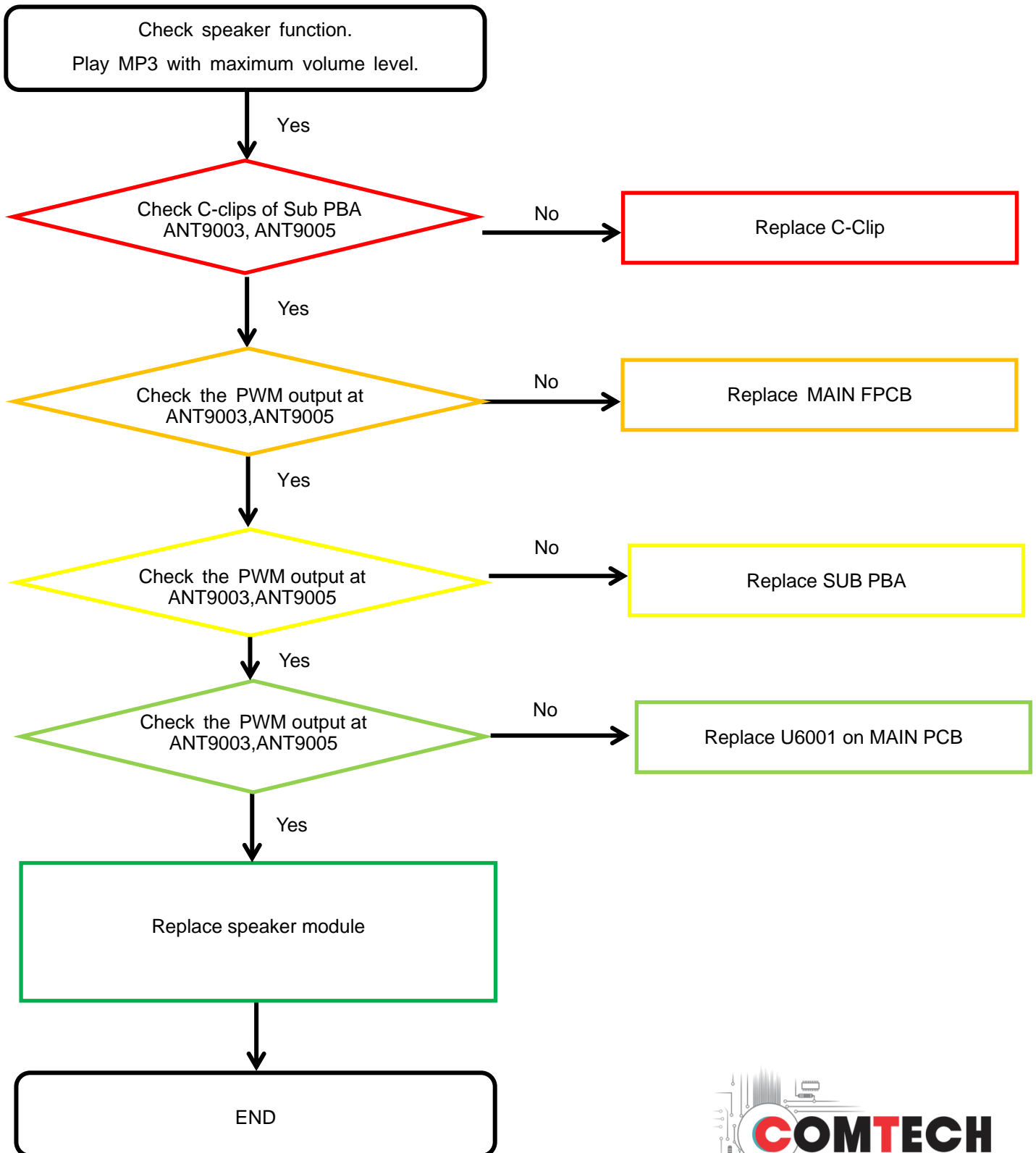
8. Level 3 Repair

8-4-9-2. Microphone Part - Sub(2nd) MIC



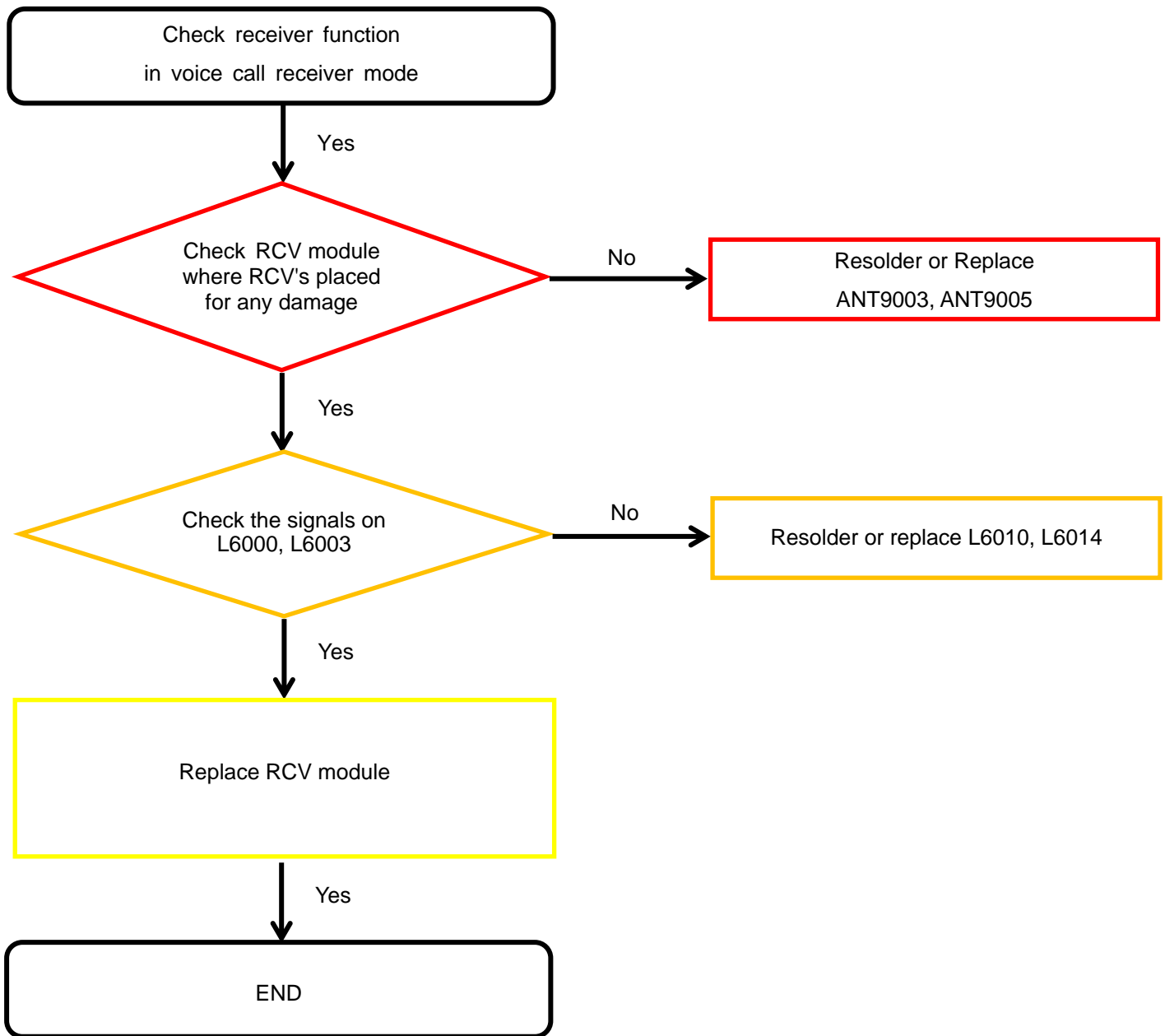
8. Level 3 Repair

8-4-10. Speaker Part



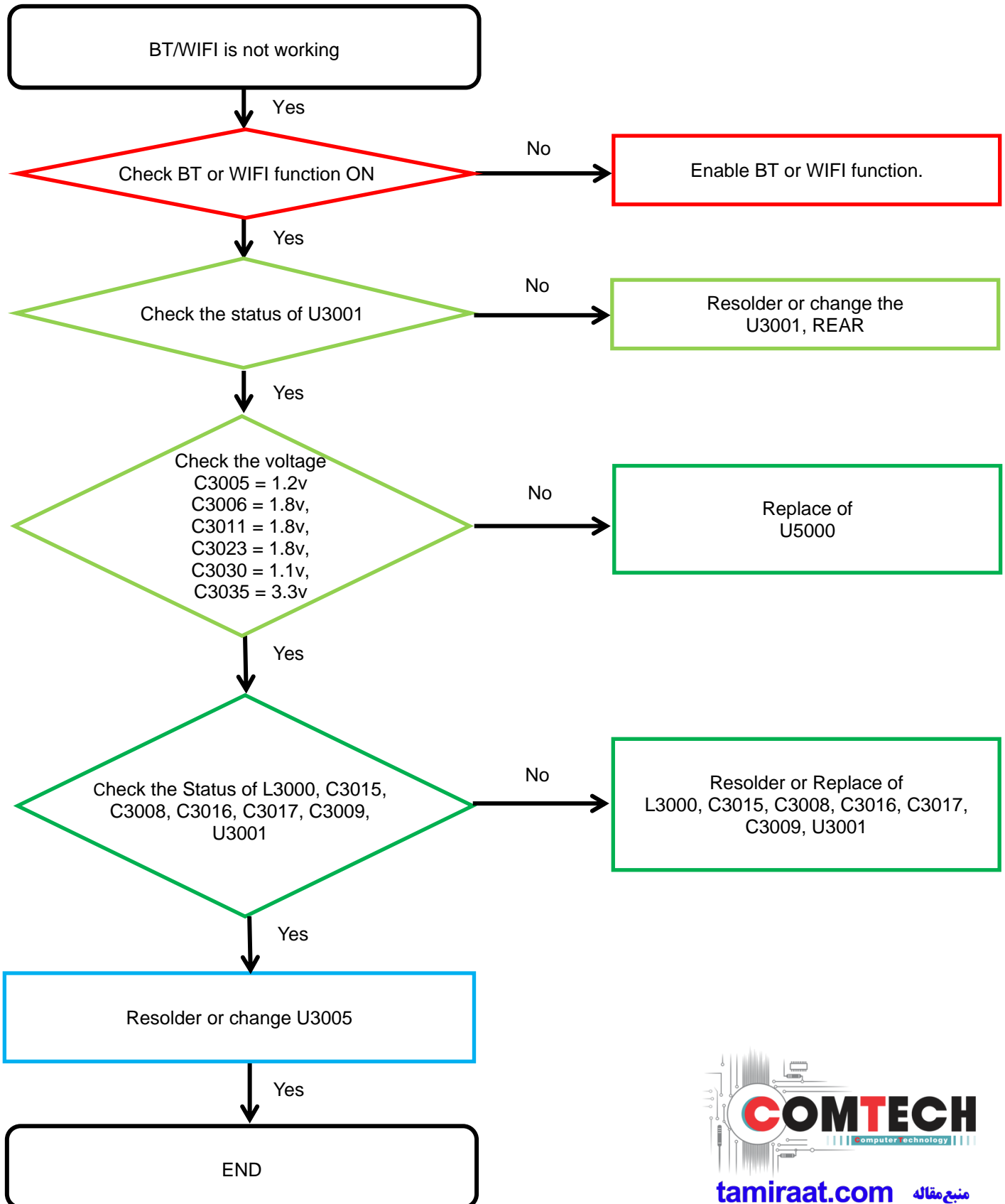
8. Level 3 Repair

8-4-11. Receiver Part



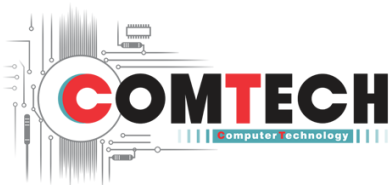
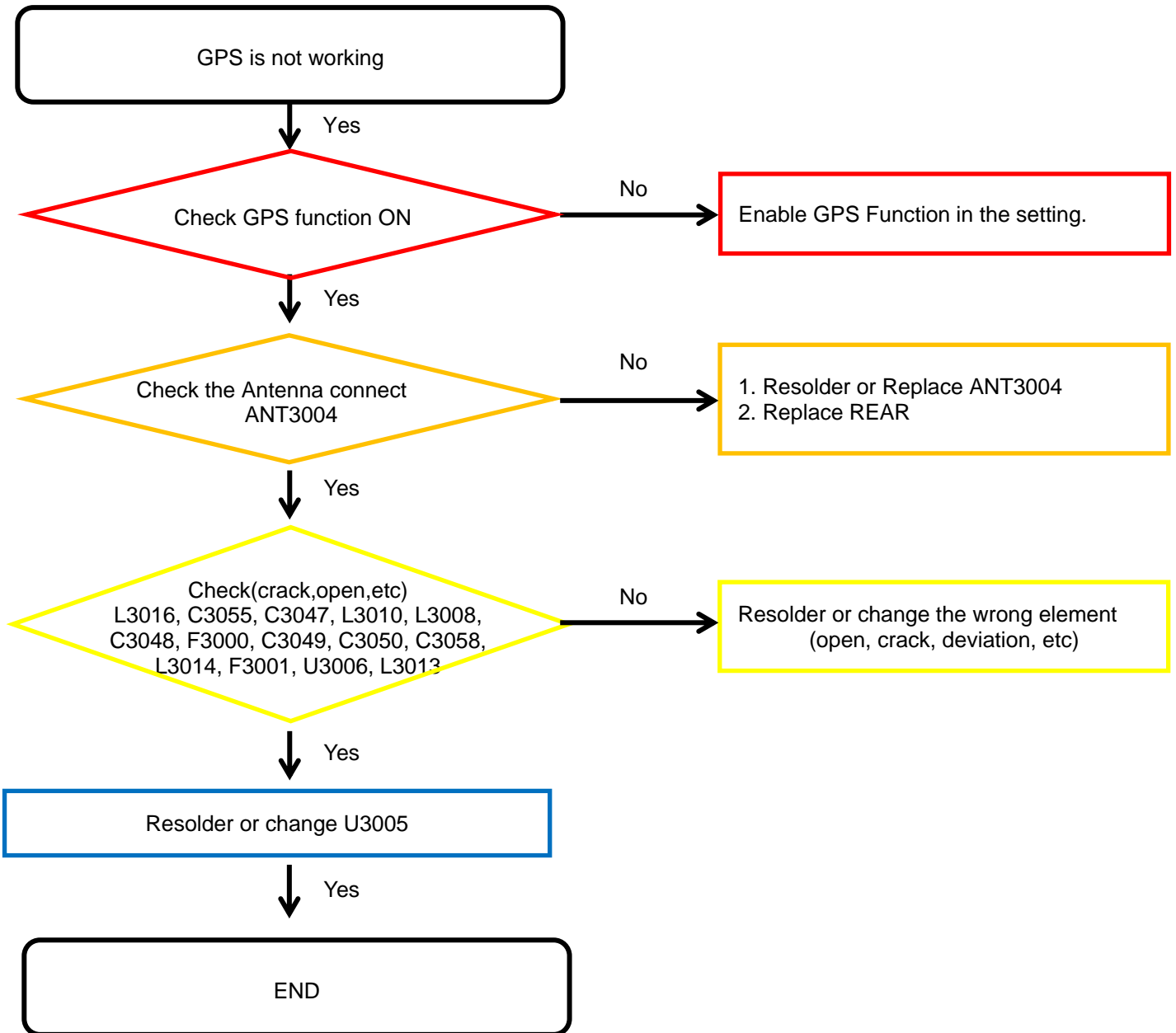
8. Level 3 Repair

8-4-12. BT/WIFI



8. Level 3 Repair

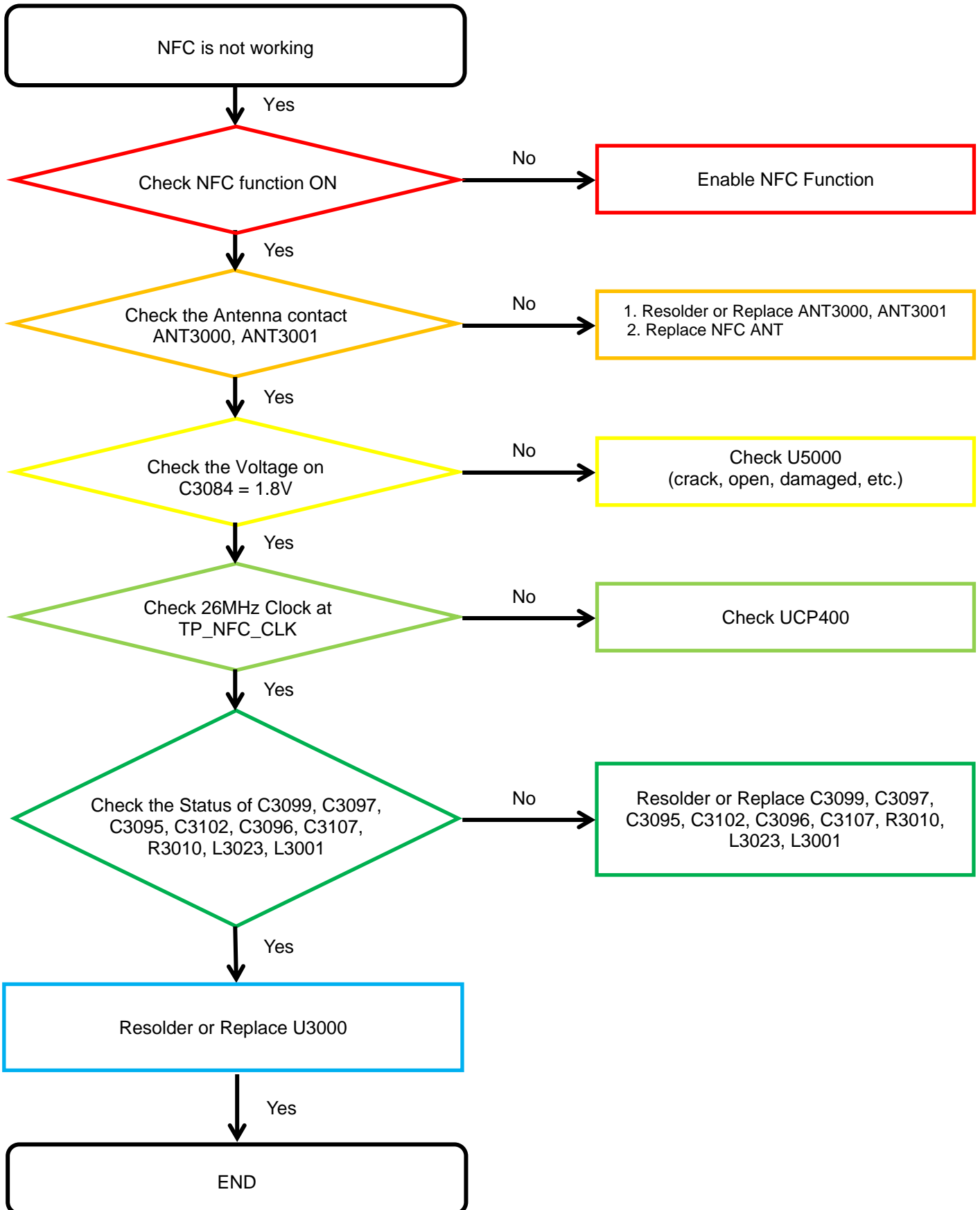
8-4-13. GPS



tamiraat.com منبع مقاله

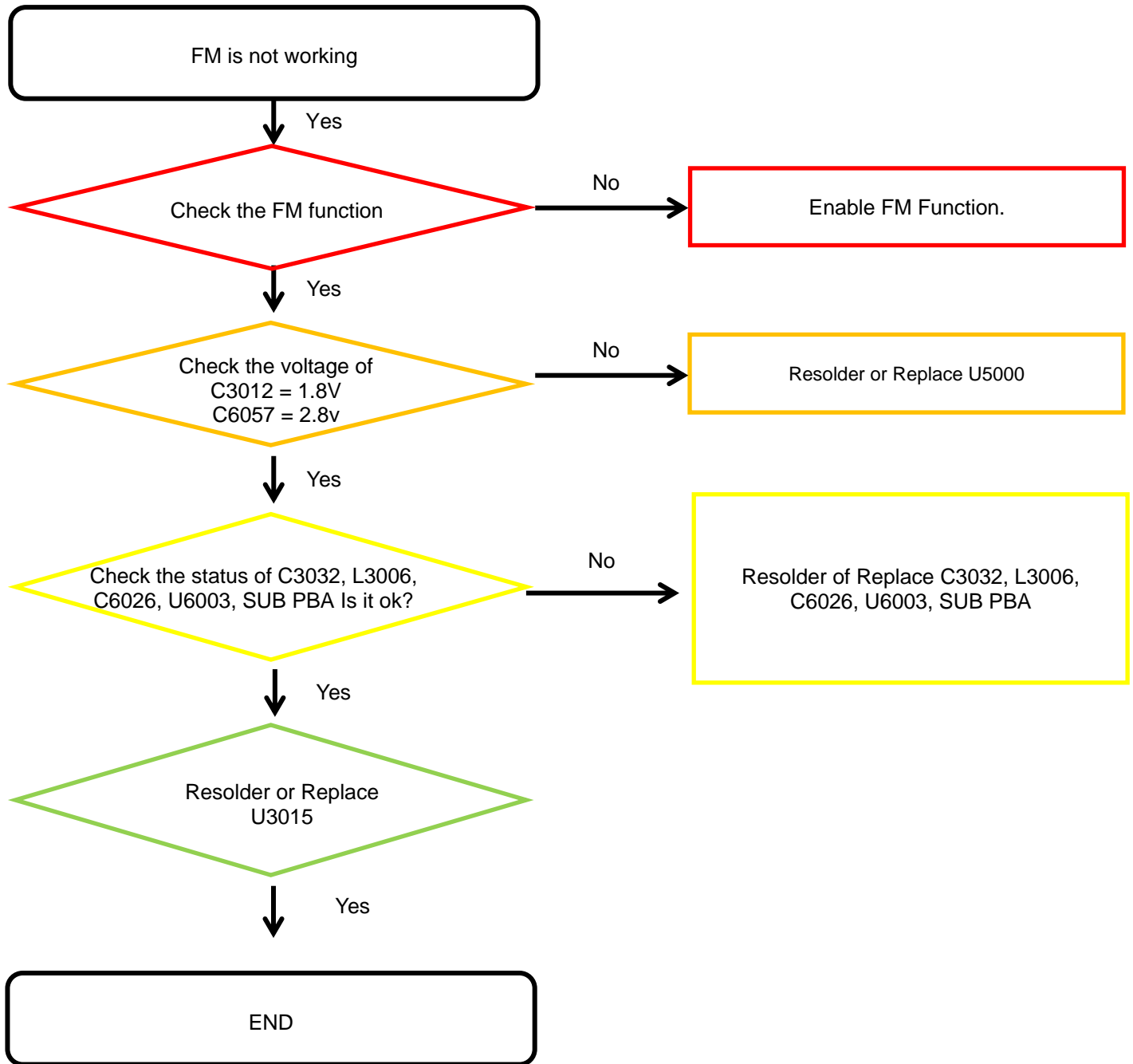
8. Level 3 Repair

8-4-14. NFC



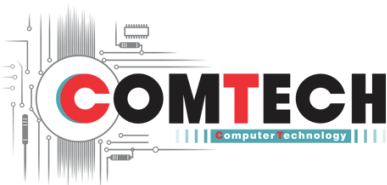
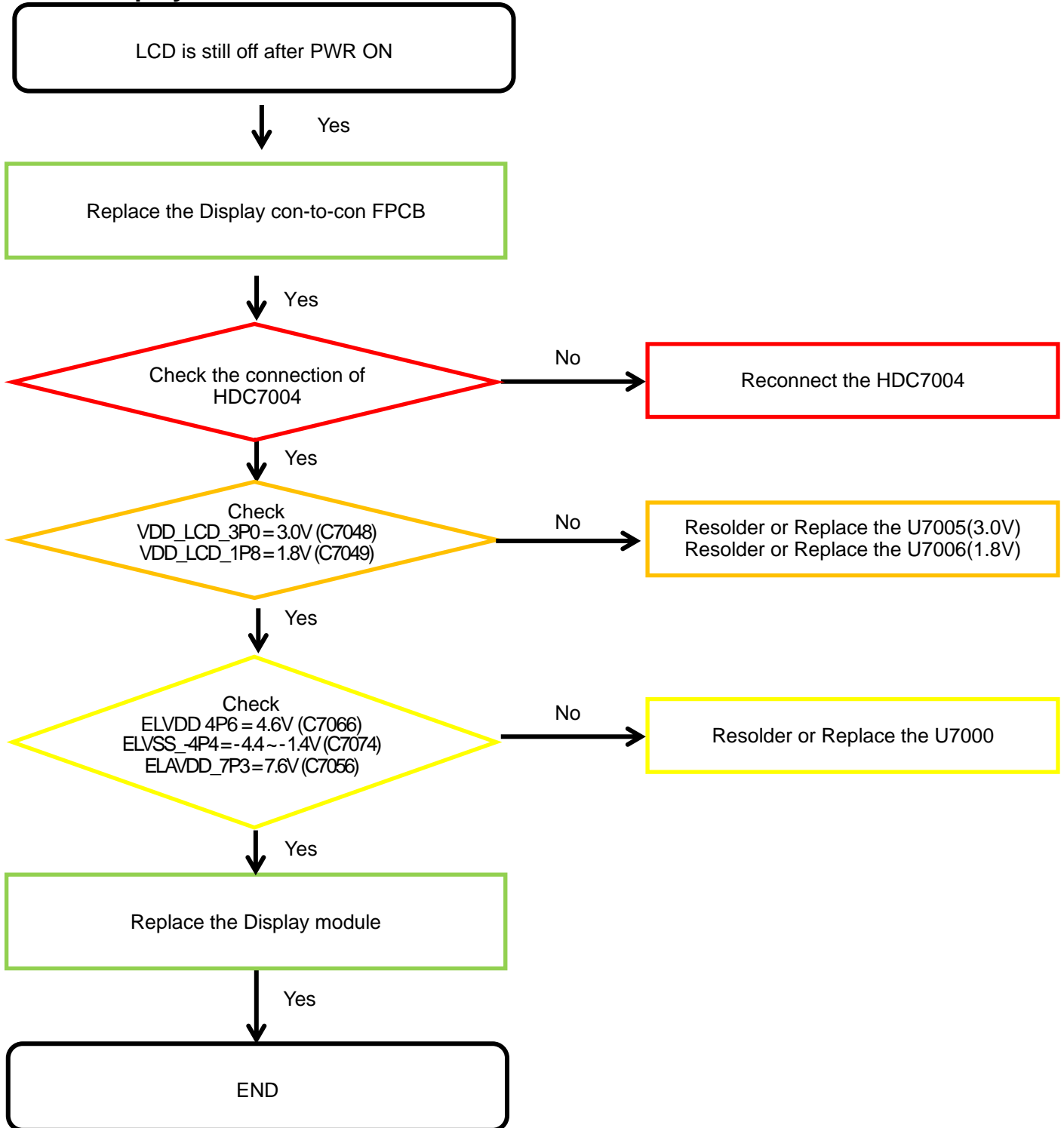
8. Level 3 Repair

8-4-15. FM radio part



8. Level 3 Repair

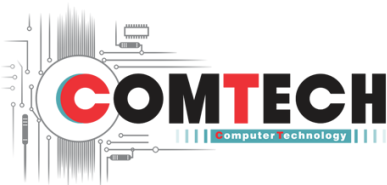
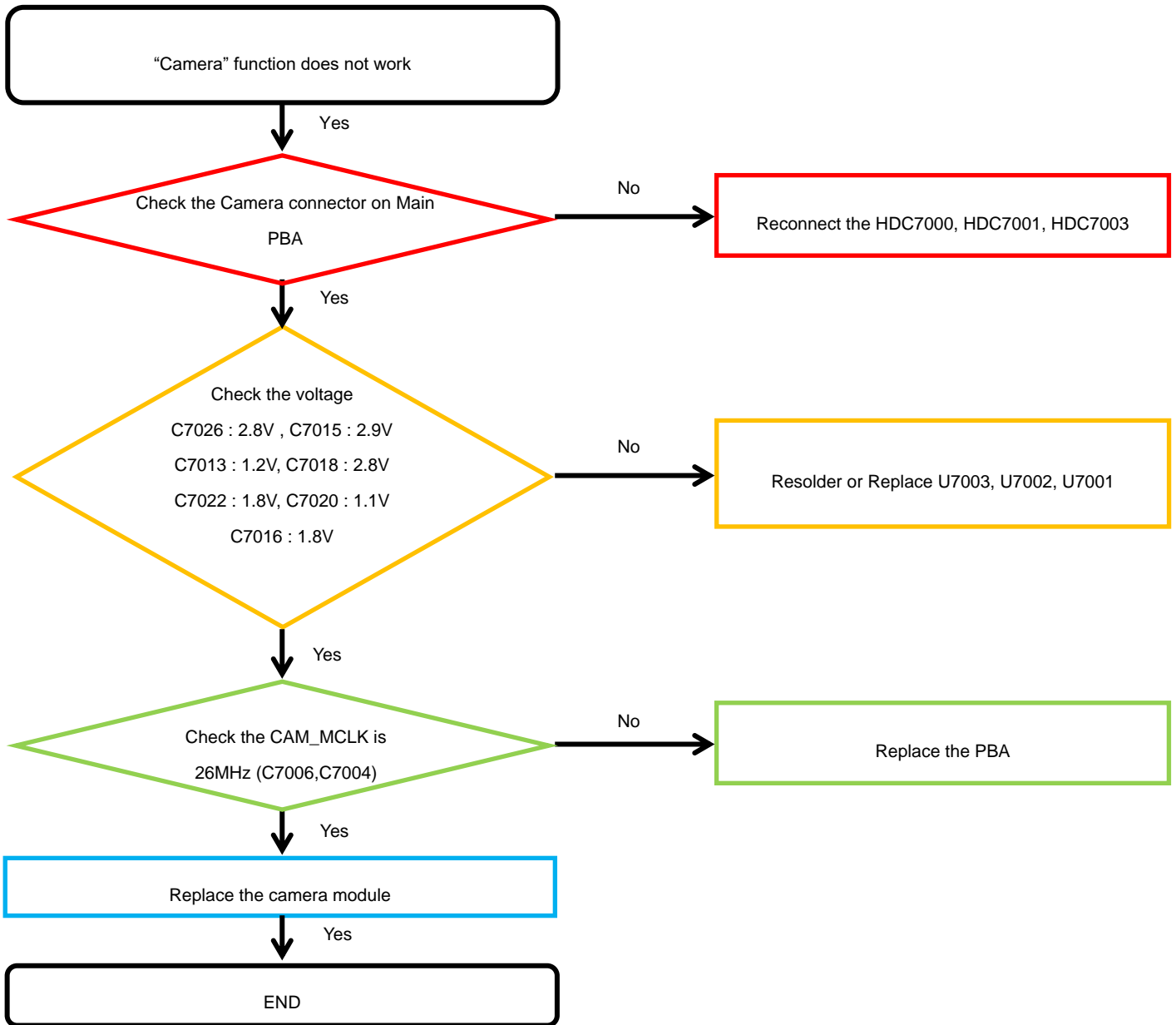
8-4-16. Display



tamiraat.com منبع مقاله

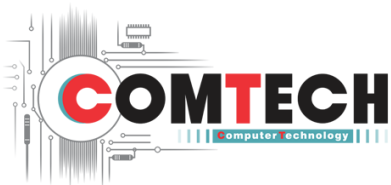
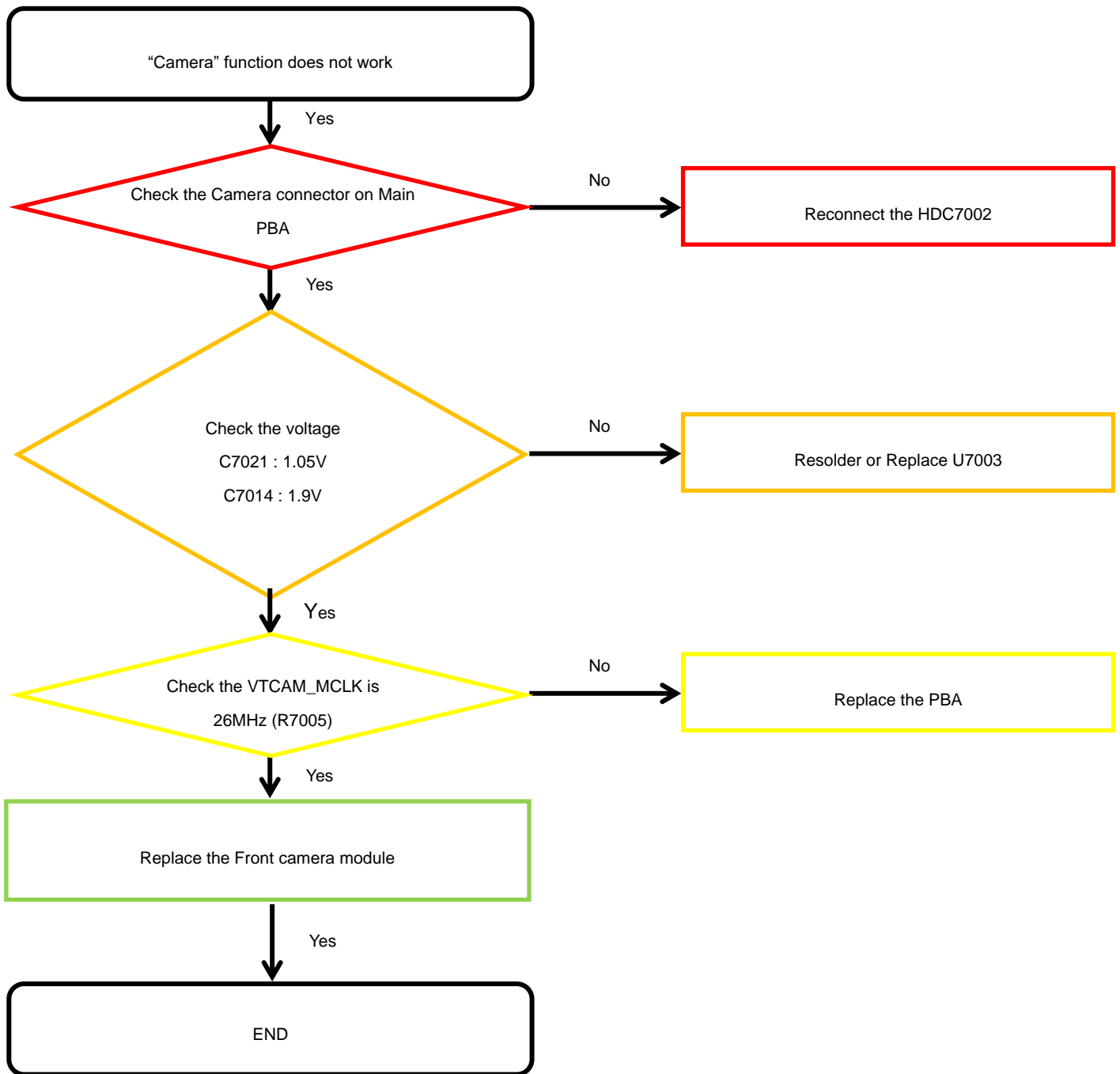
8. Level 3 Repair

8-4-17. Triple Camera



8. Level 3 Repair

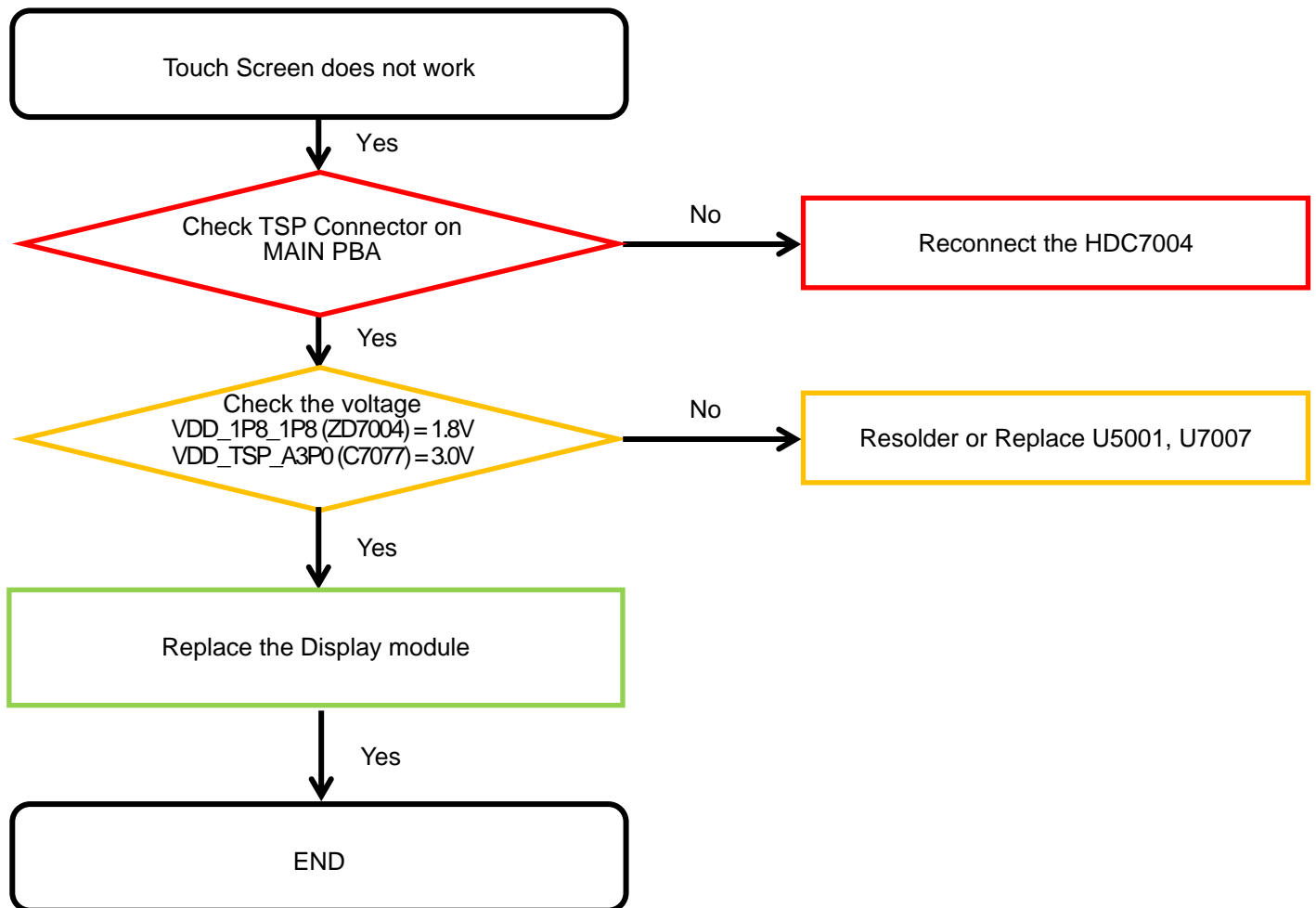
8-4-18. VT CAMERA



tamiraat.com منبع مقاله

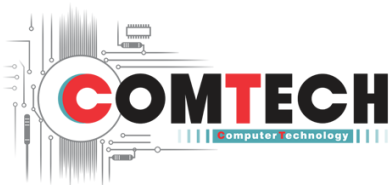
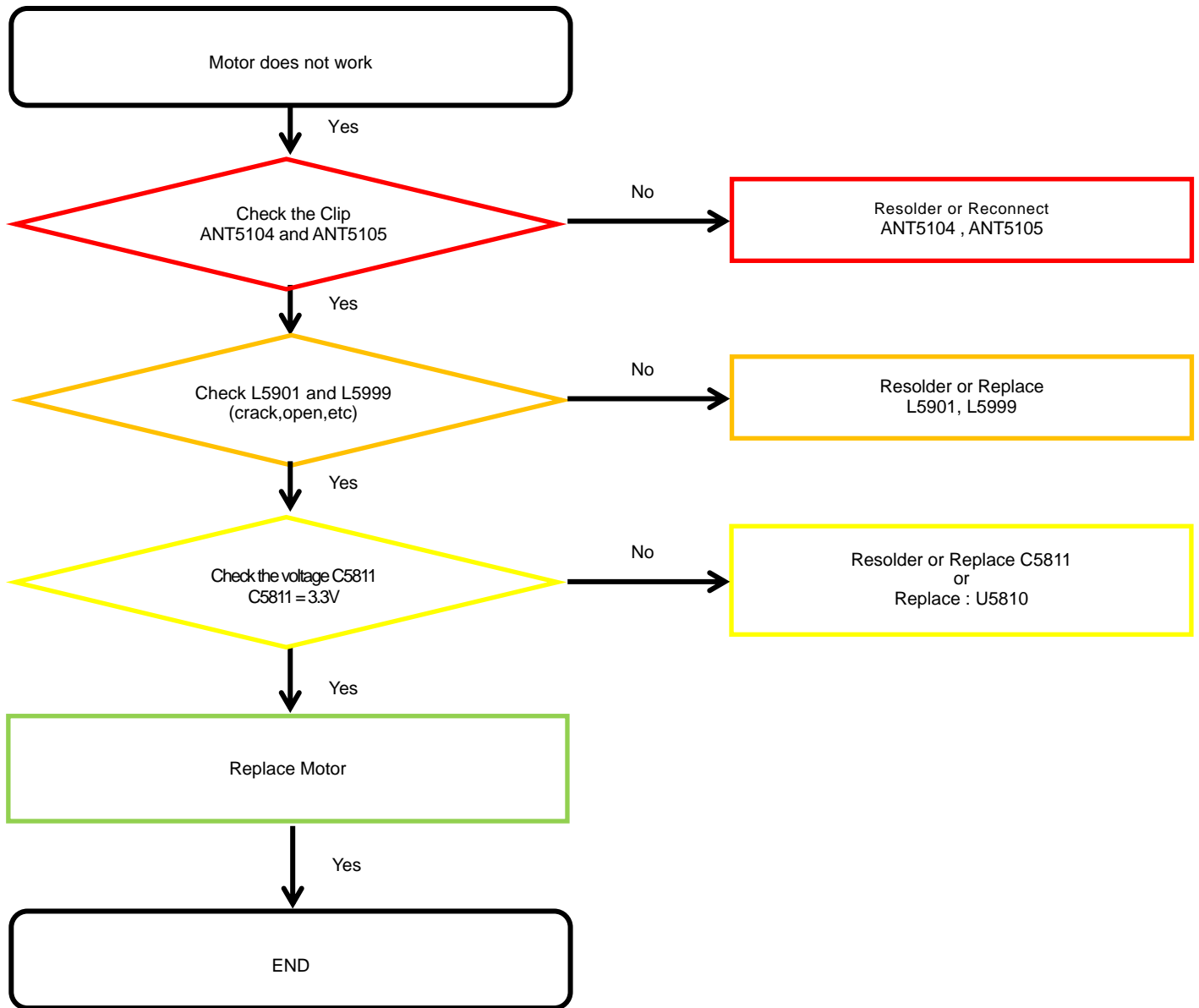
8. Level 3 Repair

8-4-19. TSP



8. Level 3 Repair

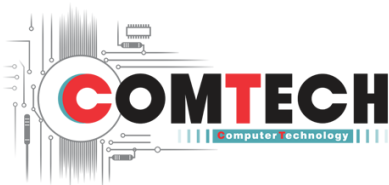
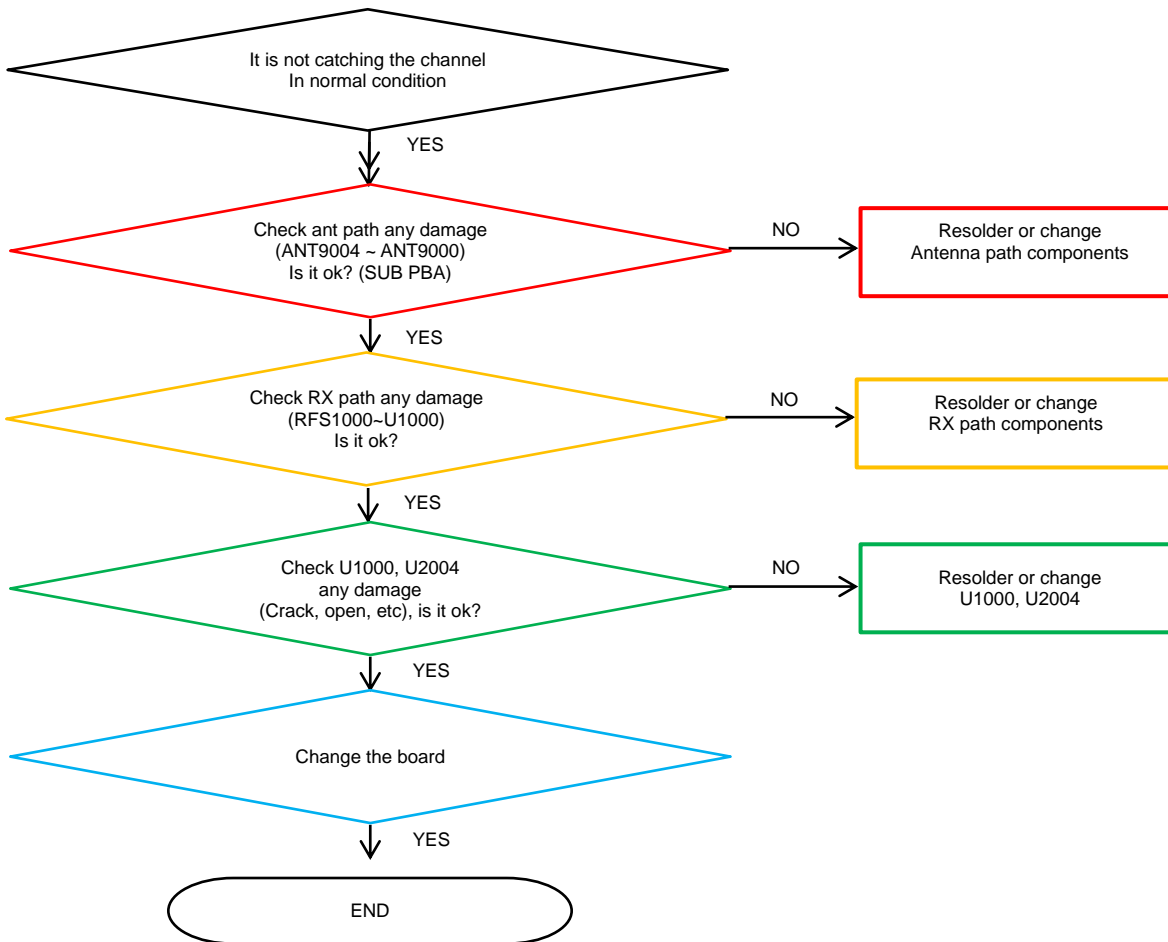
8-4-20. Motor



tamiraat.com منبع مقاله

8. Level 3 Repair

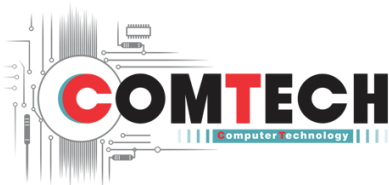
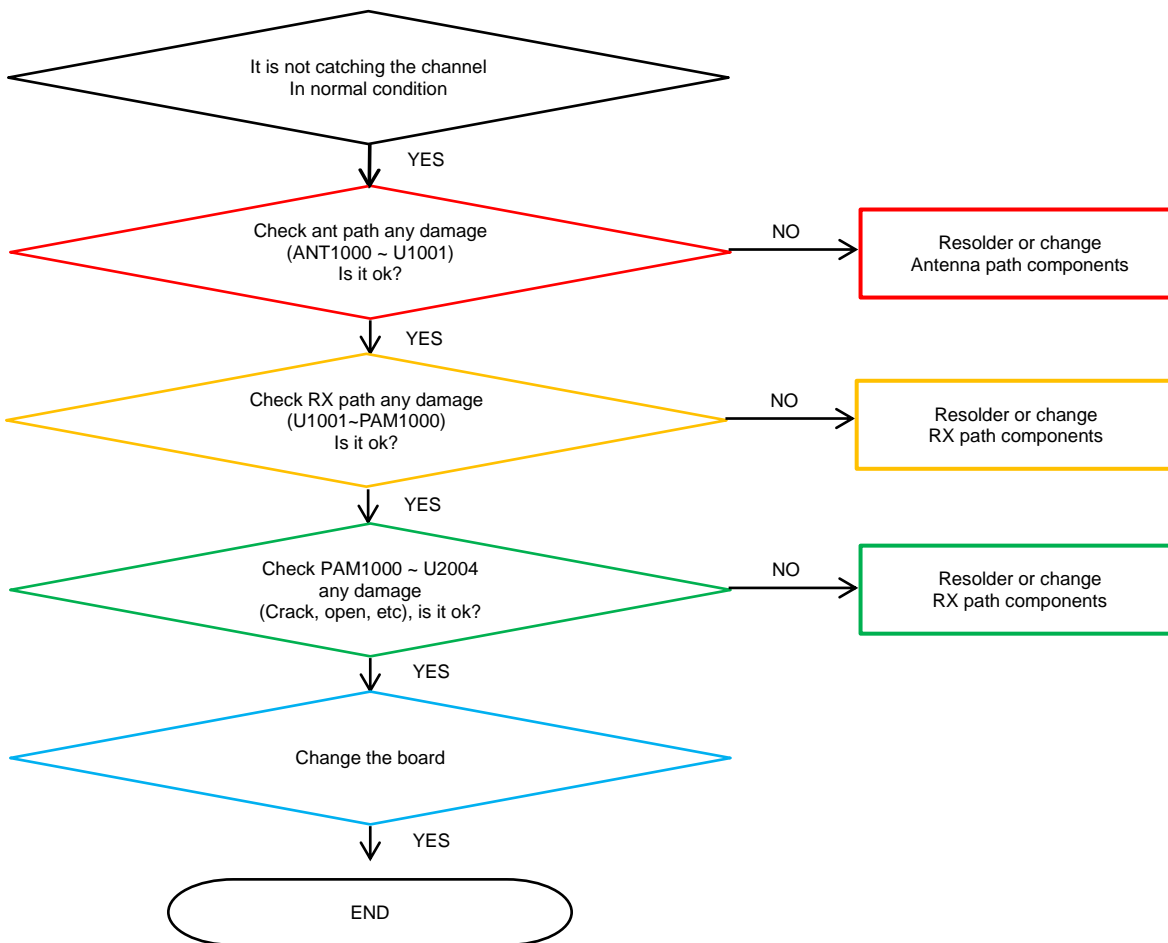
8-4-21. GSM 850/900, WCDMA B5/8, LTE B5/8/20/28 PRx



tamiraat.com منبع مقاله

8. Level 3 Repair

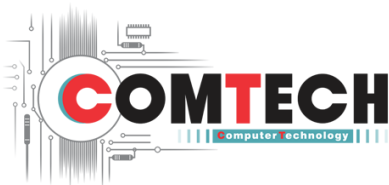
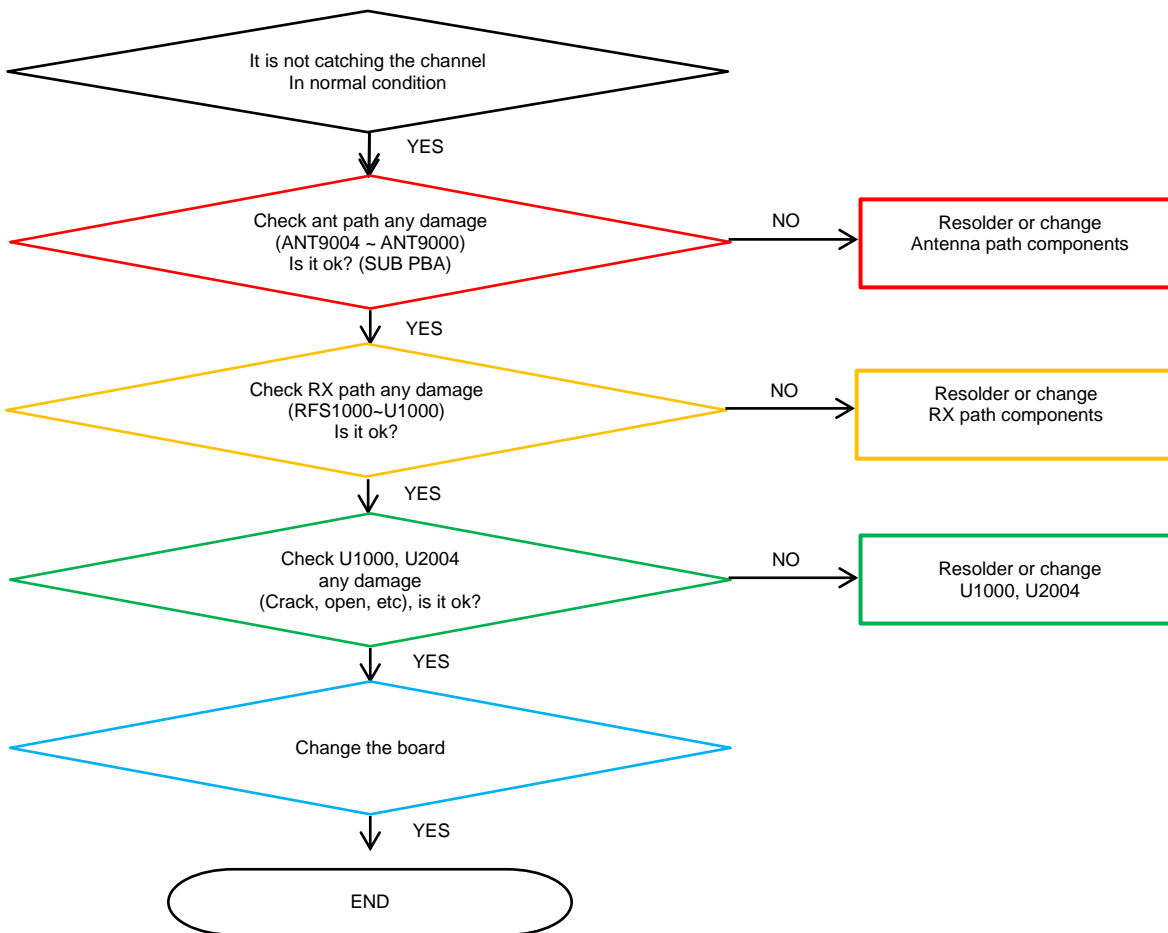
8-4-22. LTE B7/38/40/41 PRx



tamiraat.com منبع مقاله

8. Level 3 Repair

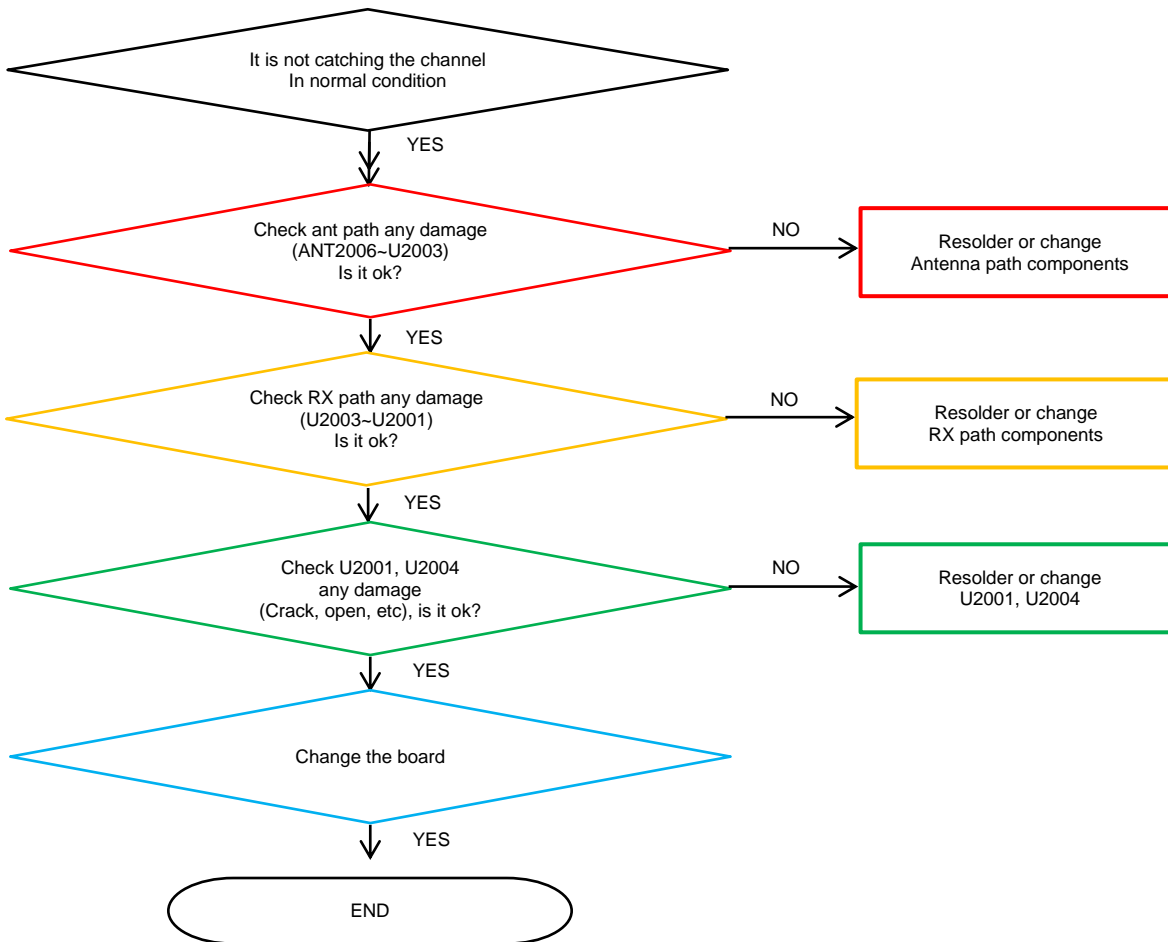
8-4-23. GSM DCS/PCS, WCDMA B1/2, LTE B1/3 PRx



tamiraat.com منبع مقاله

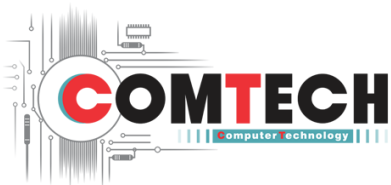
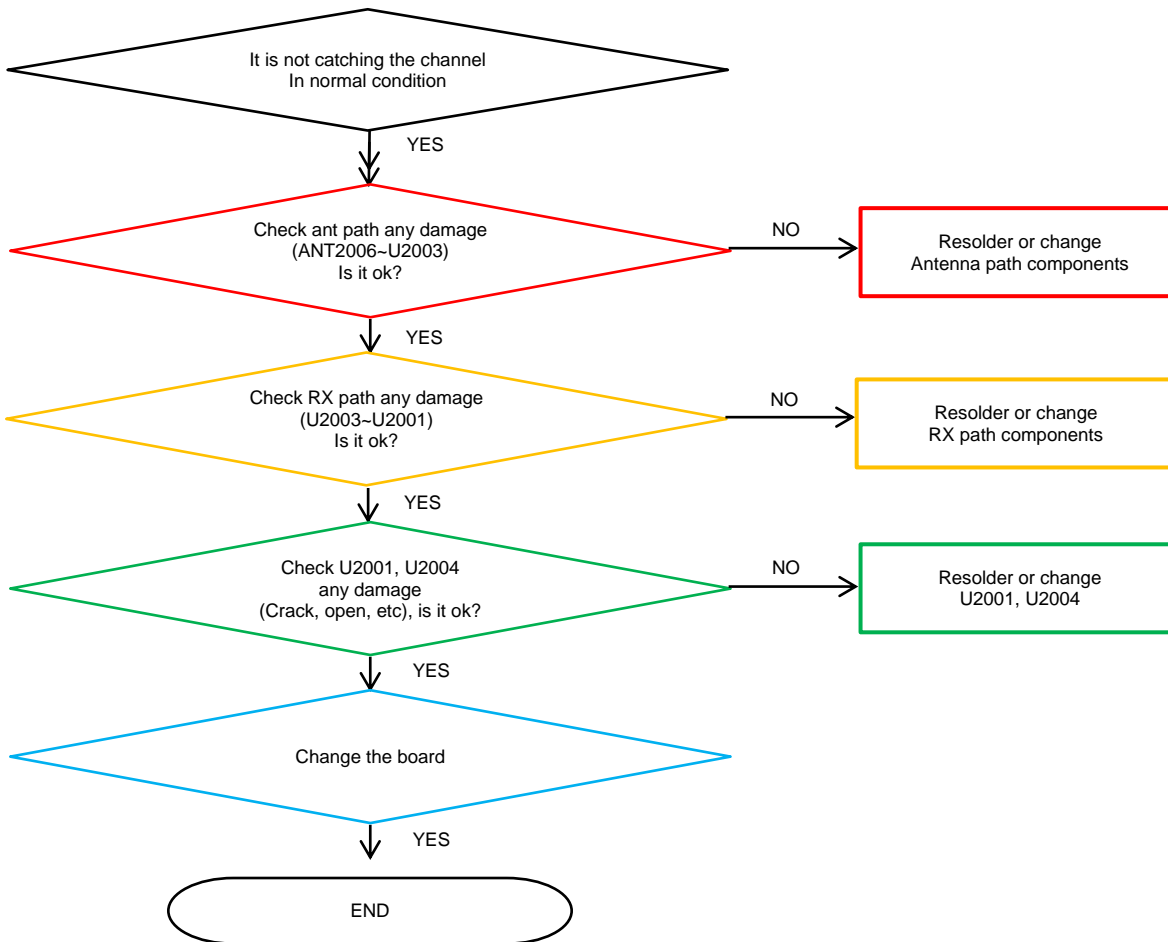
8. Level 3 Repair

8-4-24. GSM 850/900, WCDMA B5/8, LTE B5/8/20/28 DRx



8. Level 3 Repair

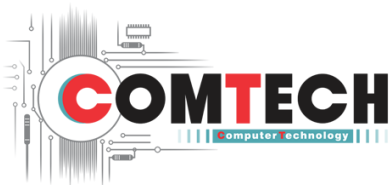
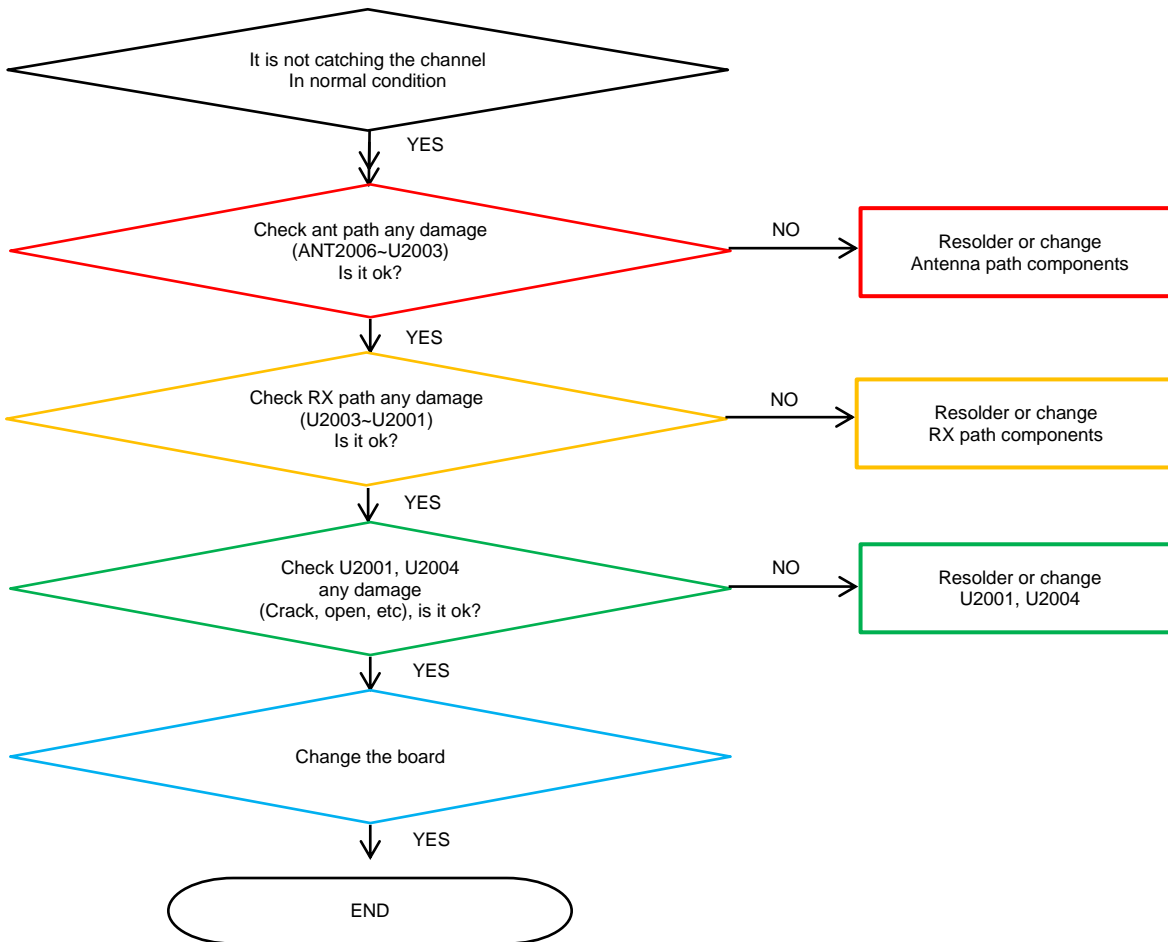
8-4-25. LTE B7/38/40/41 DRx



tamiraat.com منبع مقاله

8. Level 3 Repair

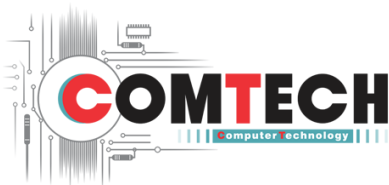
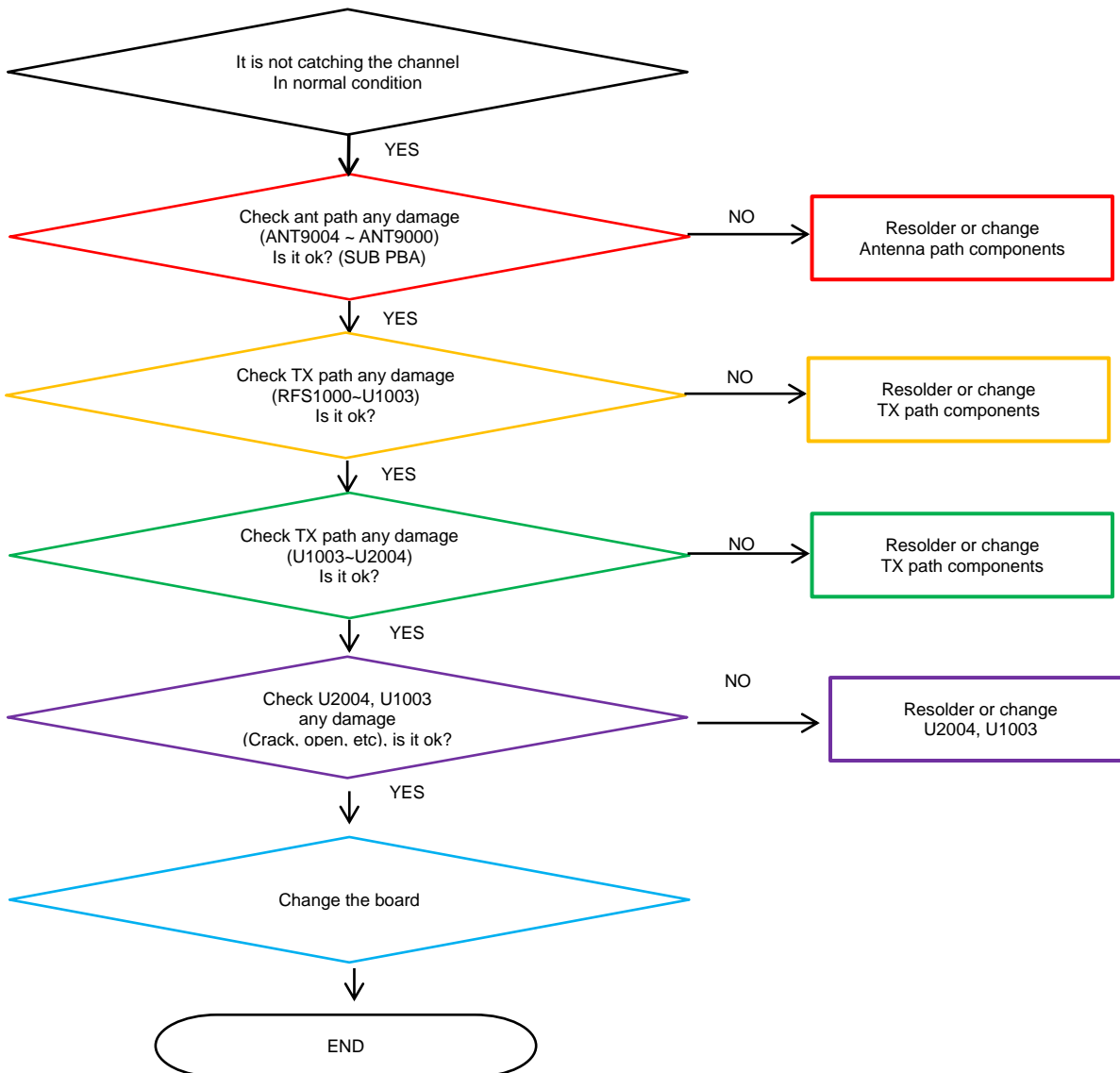
8-4-26. GSM DCS/PCS, WCDMA B1/2, LTE B1/3 DRx



tamiraat.com منبع مقاله

8. Level 3 Repair

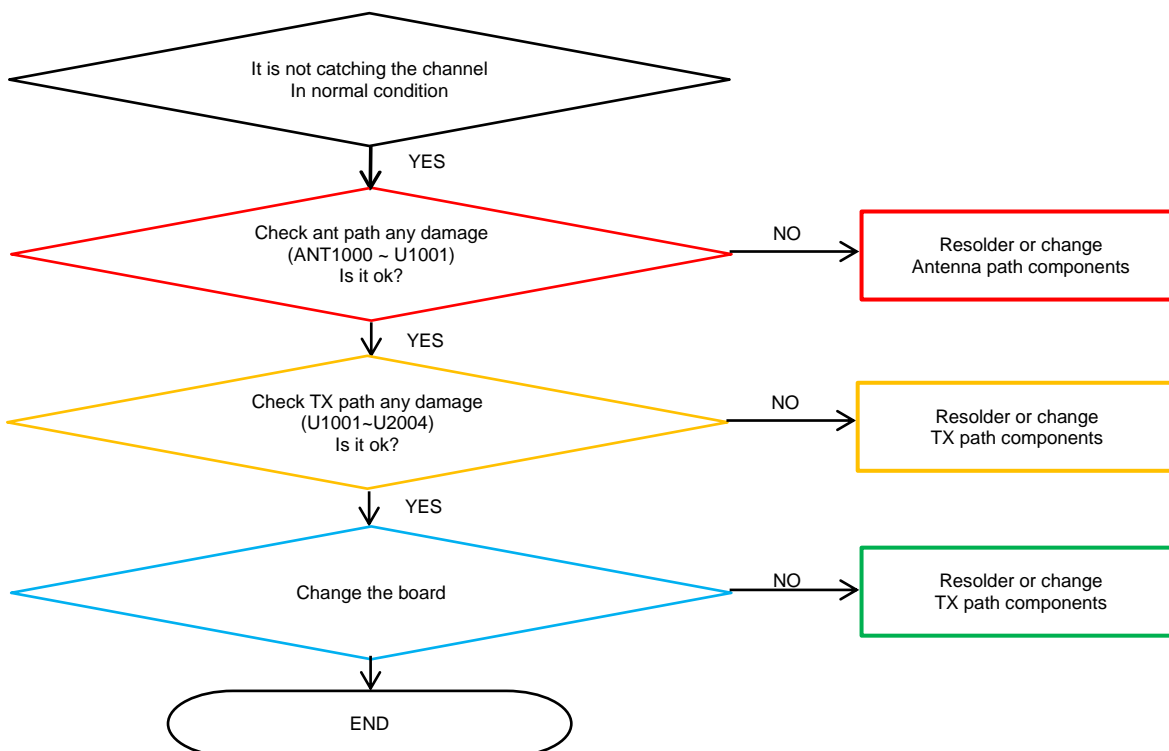
8-4-27. GSM 850/900, WCDMA B5/8, LTE B5/8/20/28 Tx



tamiraat.com منبع مقاله

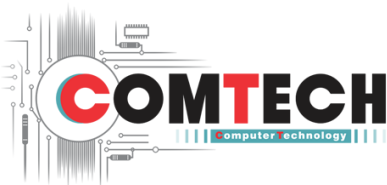
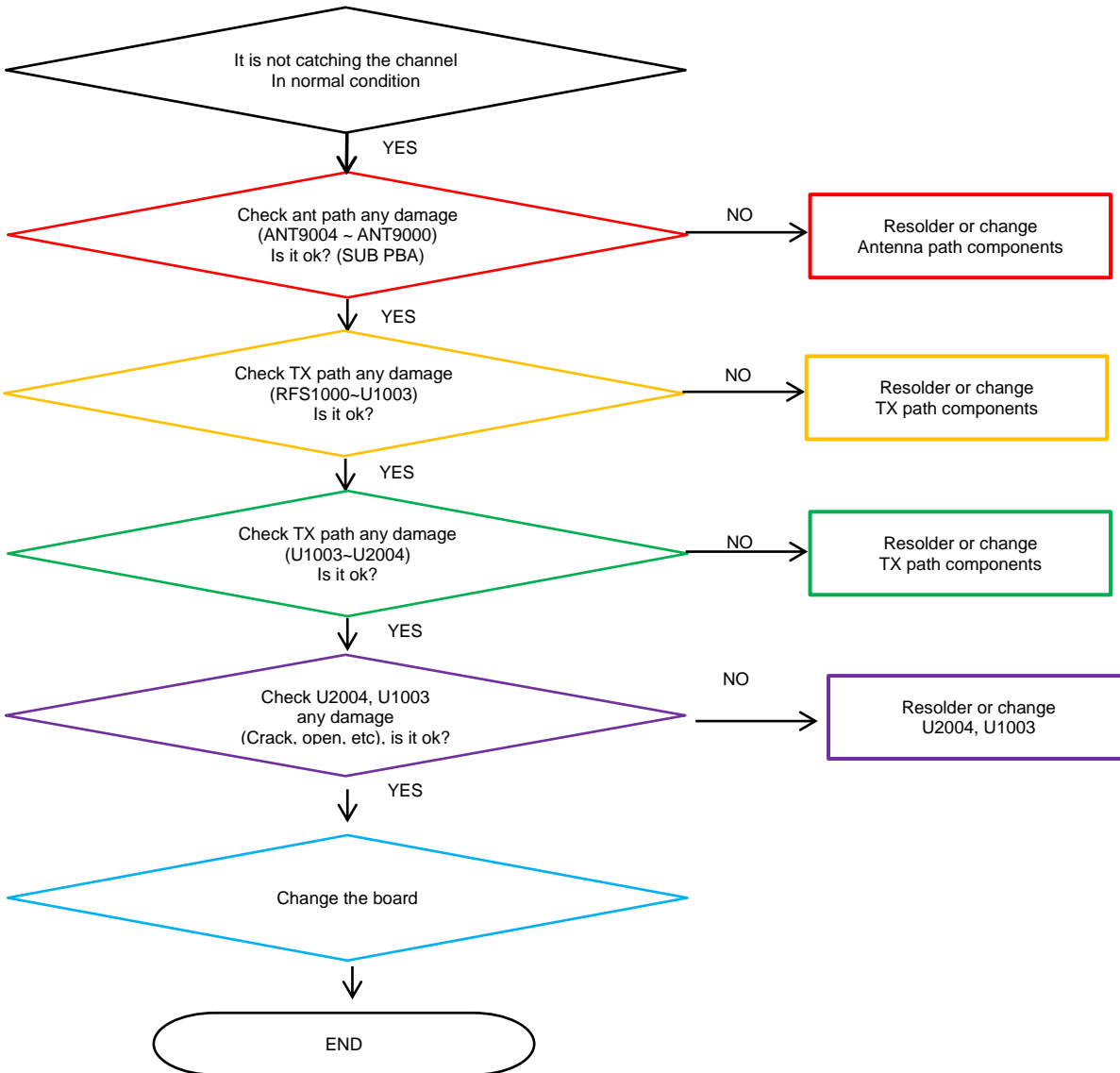
8. Level 3 Repair

8-4-28. LTE B7/38/40/41 Tx



8. Level 3 Repair

8-4-29. GSM DCS/PCS, WCDMA B1/2, LTE B1/3 Tx



tamiraat.com منبع مقاله