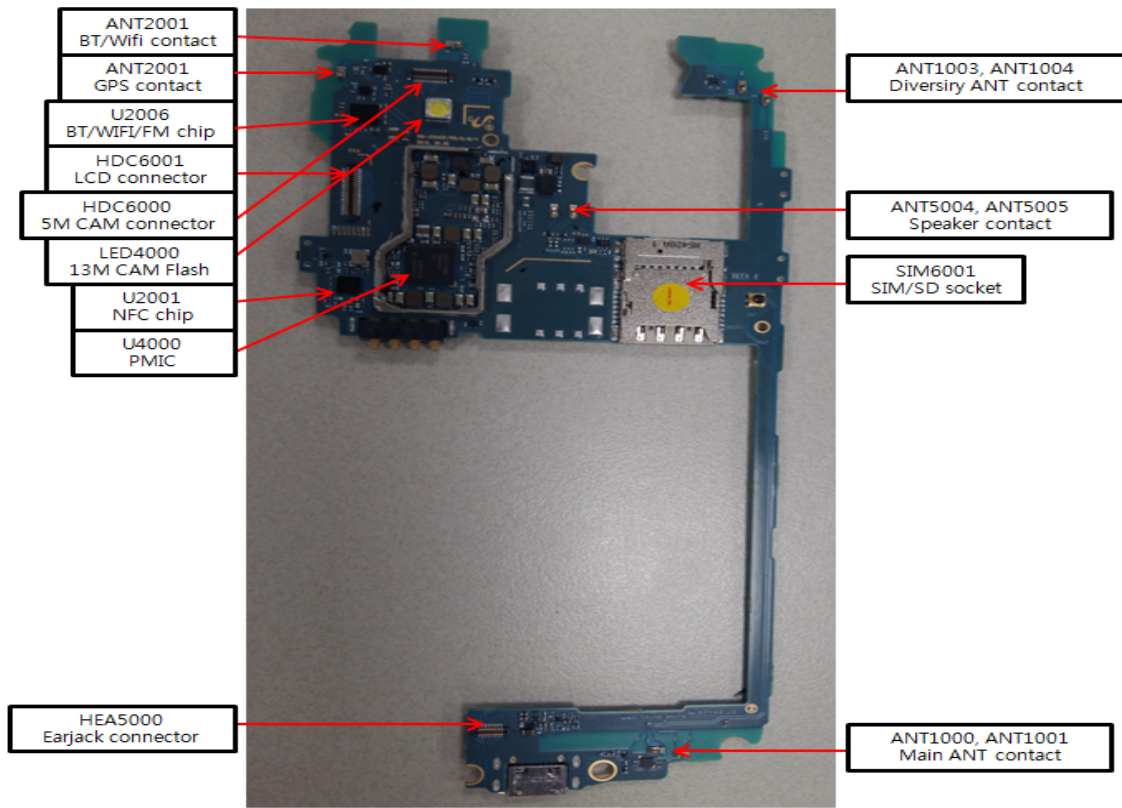
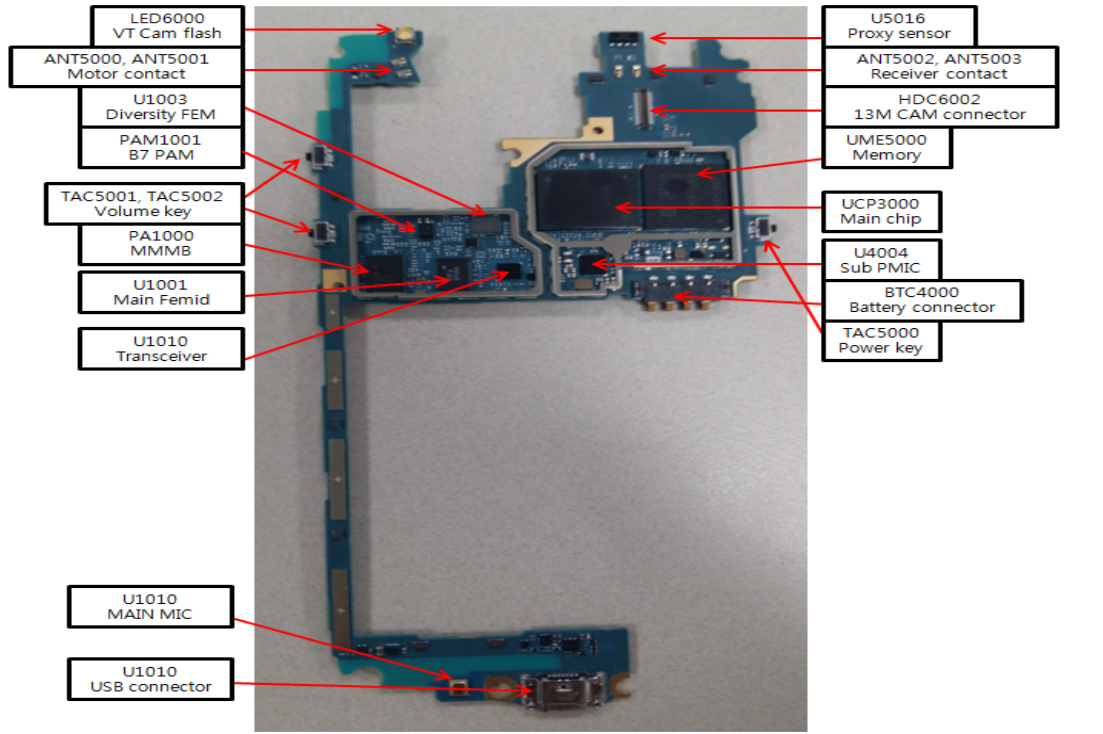
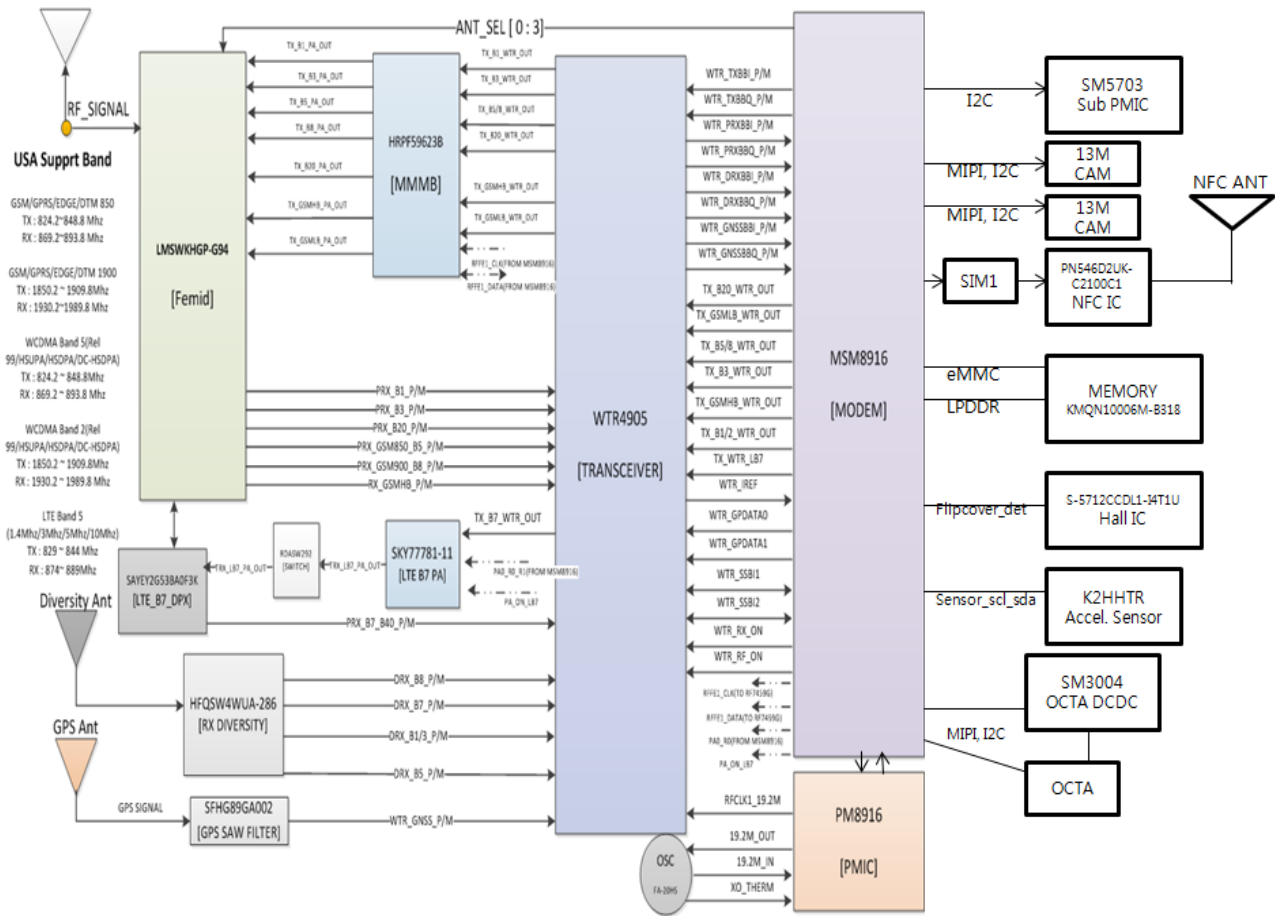


# 8. Level 3 Repair

## 8-1. Components Layout

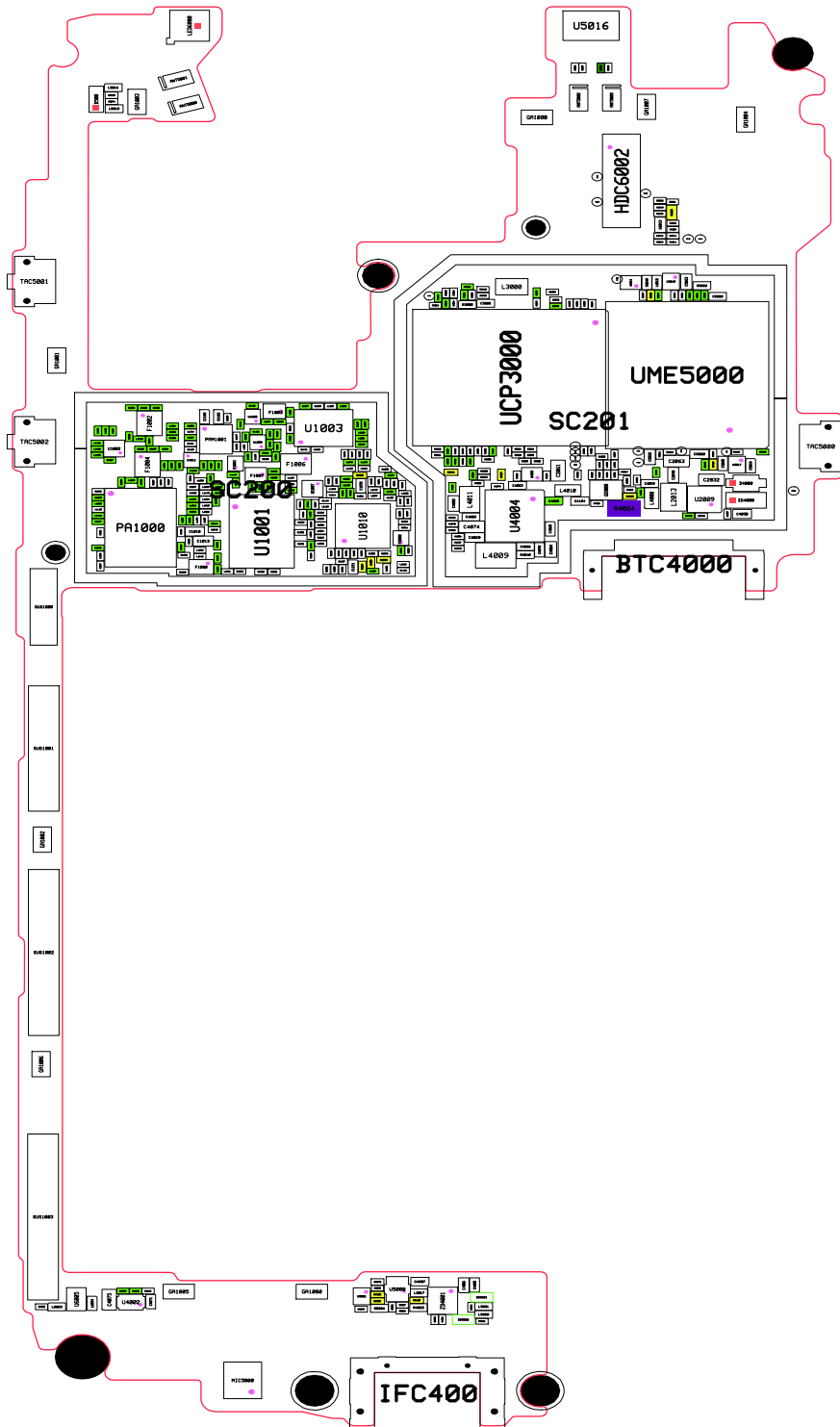


## 8-2. Block Diagram

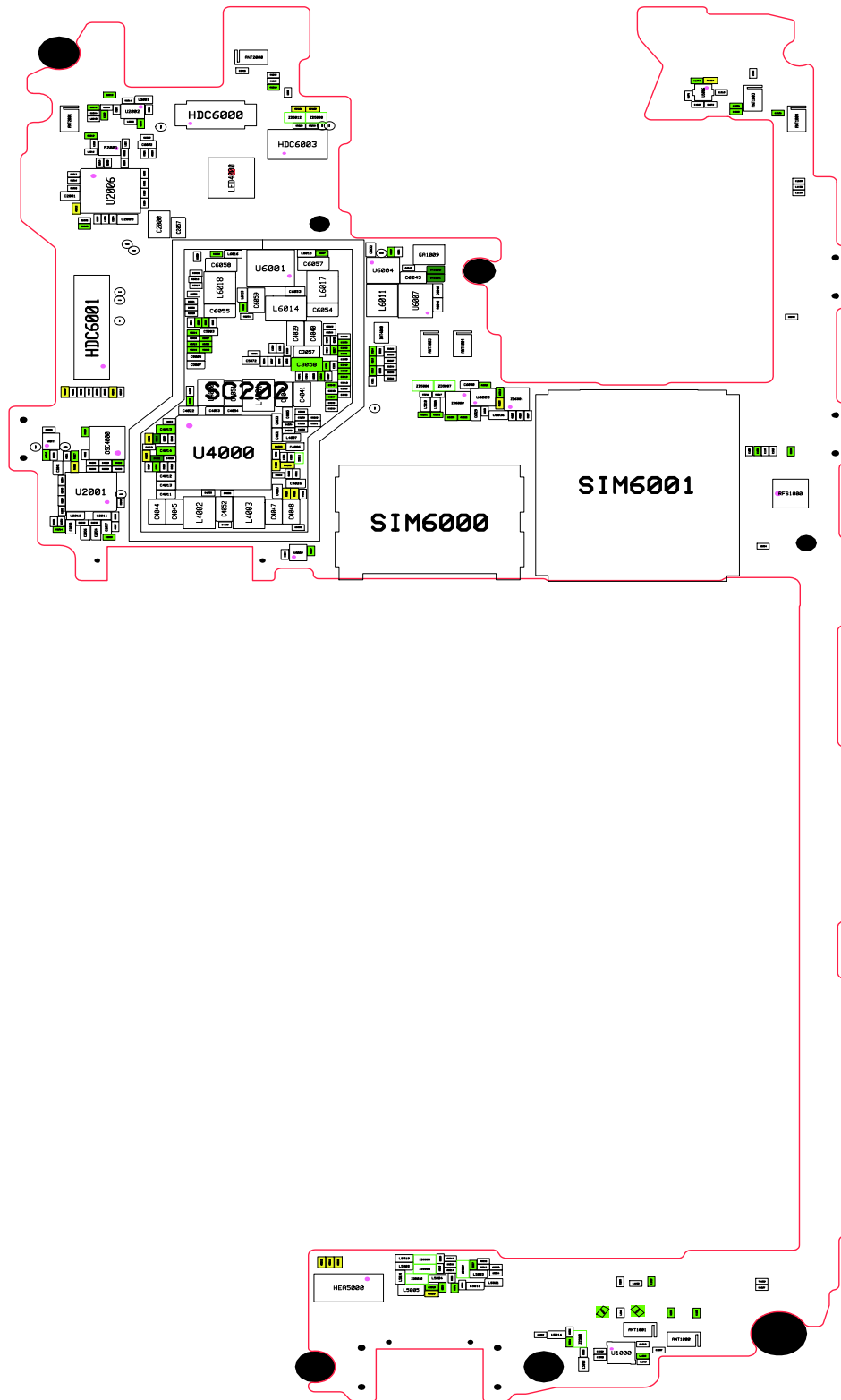


### 8-3. PCB Diagrams

#### 8-3-1. Top

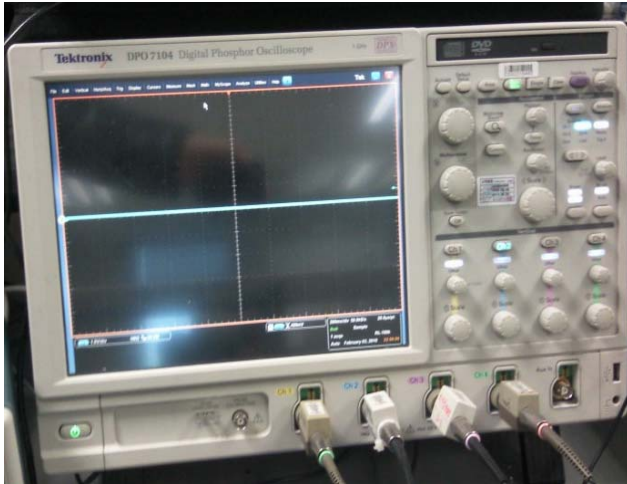


8-3-2. Bottom



### 8-4. Flow Chart of Troubleshooting

#### Equipments



↑ Oscilloscope



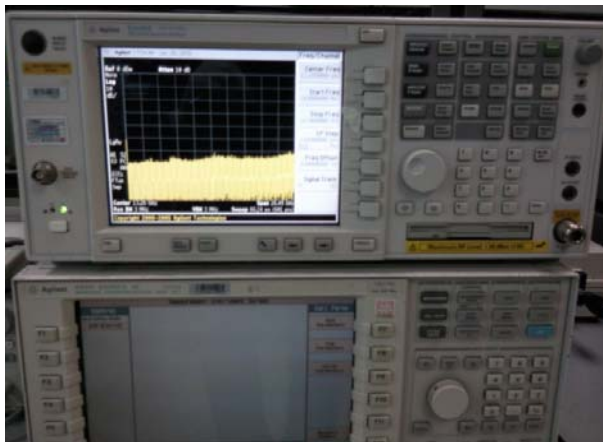
↑ Digital Multimeter



↑ Power Supply



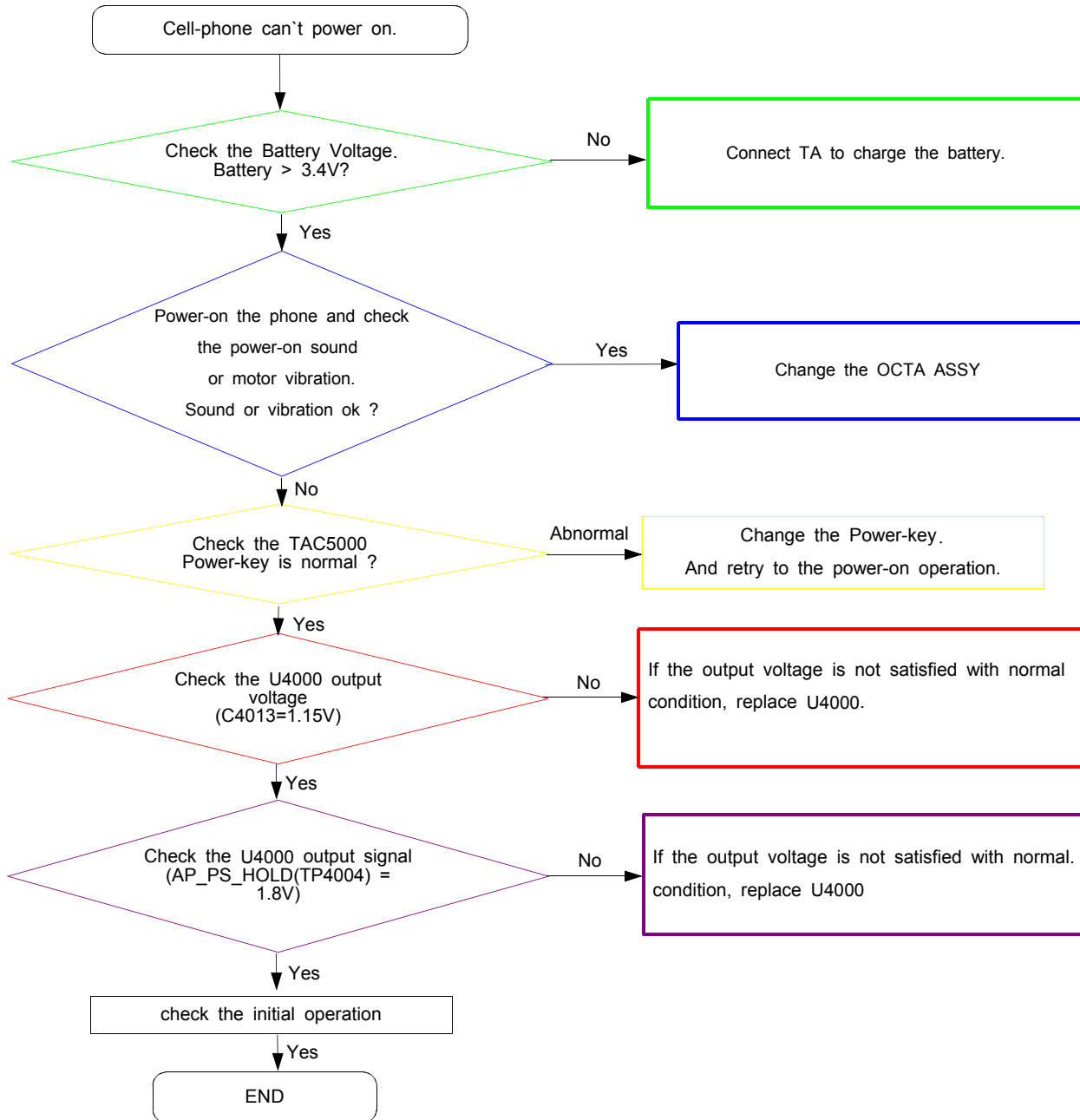
↑ + driver, ESD Safe Tweezer

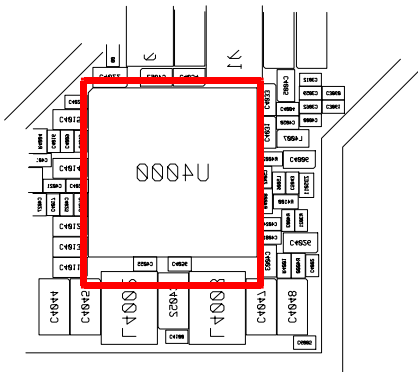
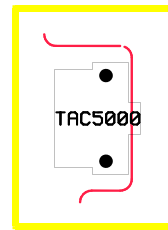
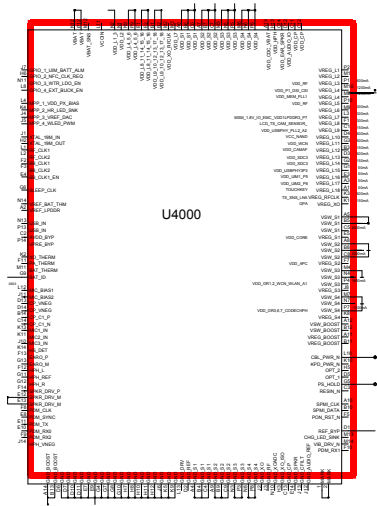
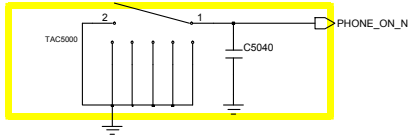


↑ 8960 & Spectrum Analyzer

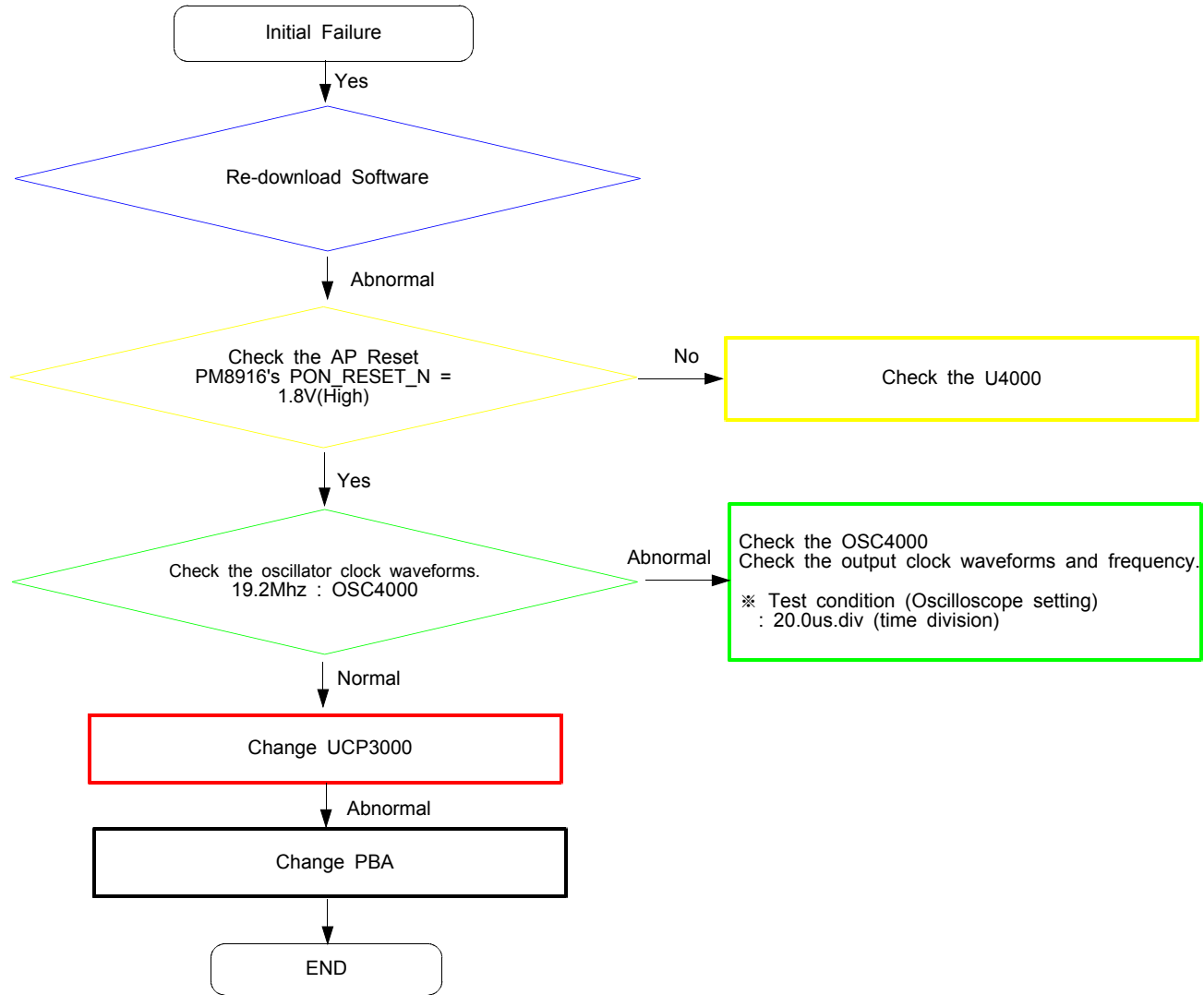
↑ Soldering iron

8-4-1. Power On

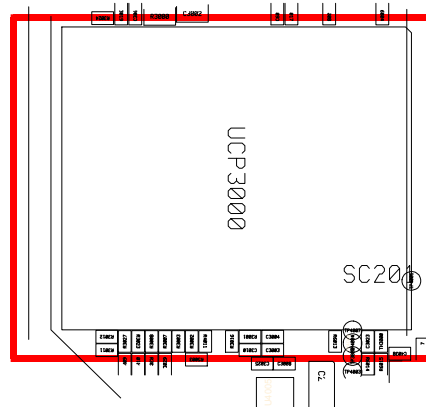
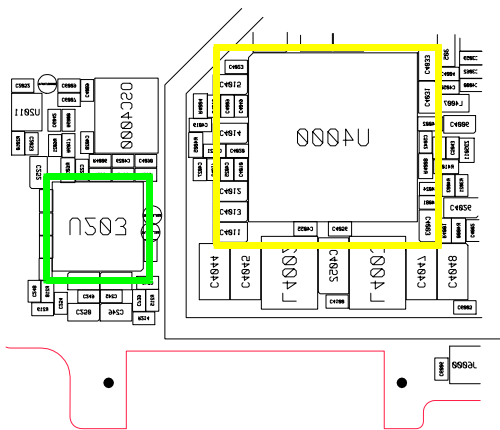
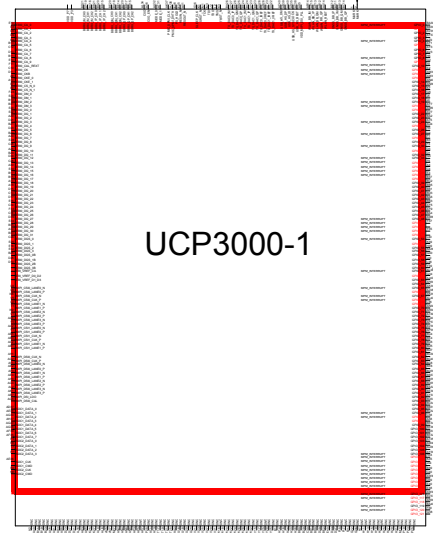
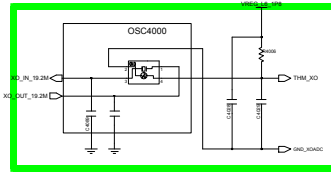
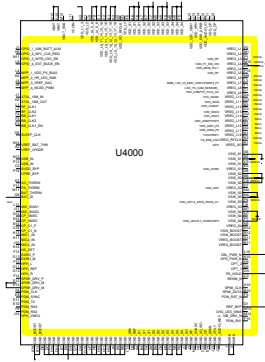




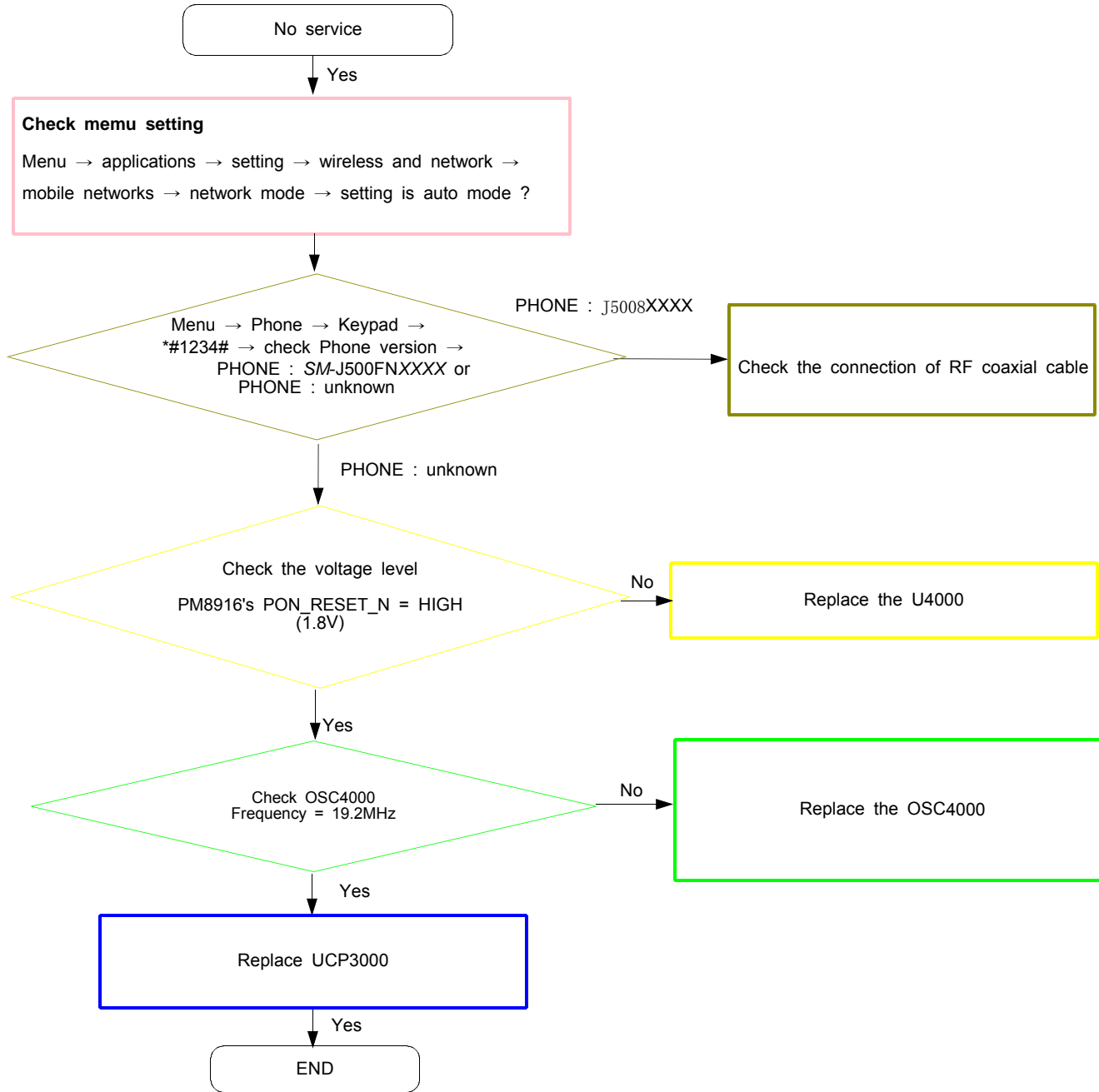
### 8-4-2. Initial

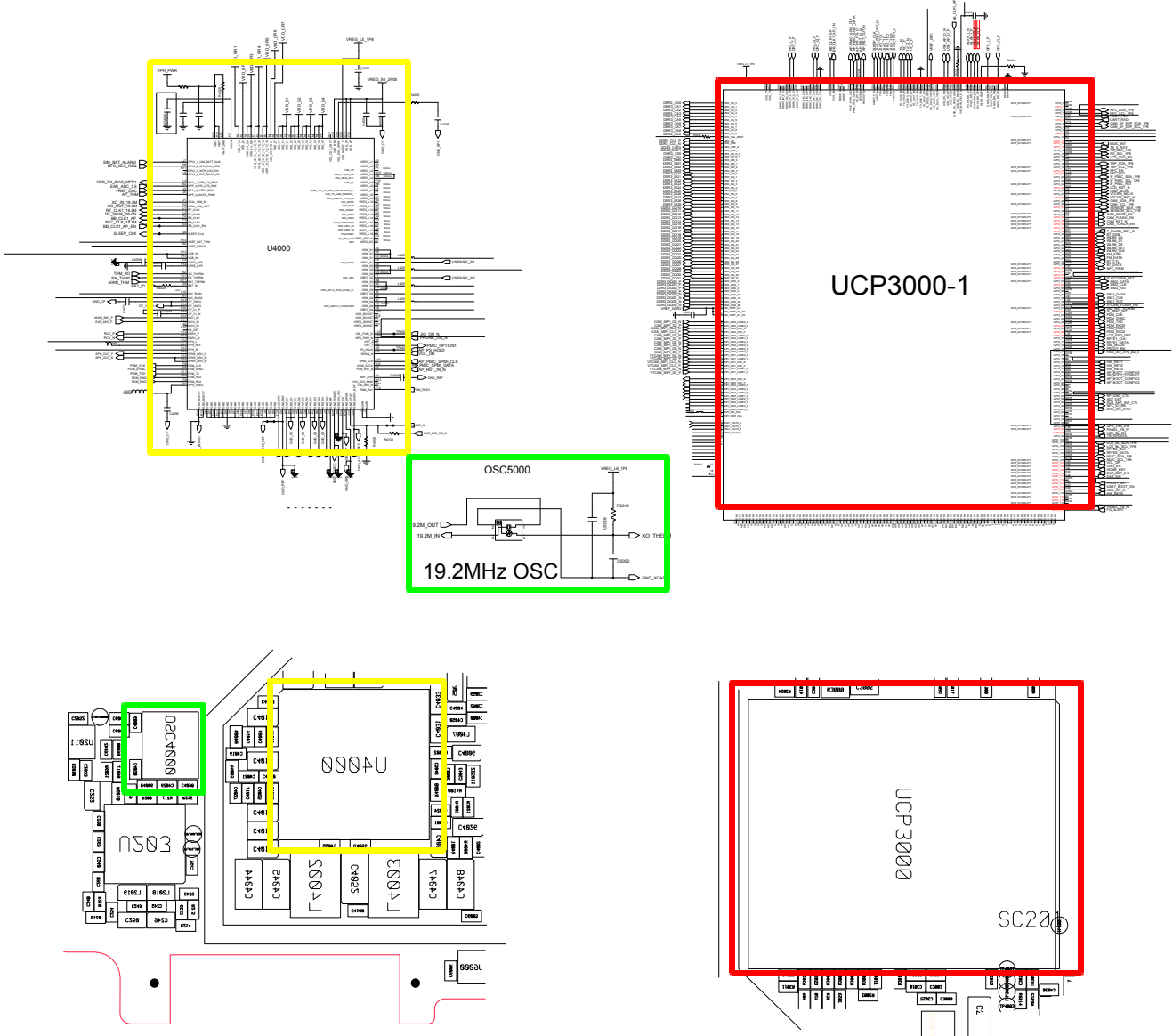




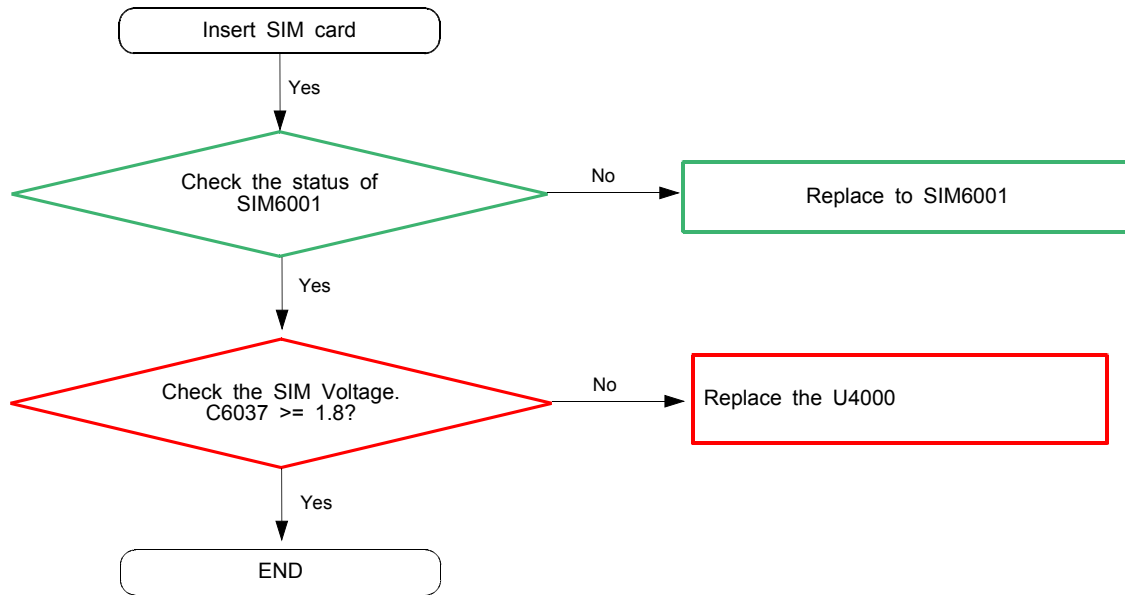


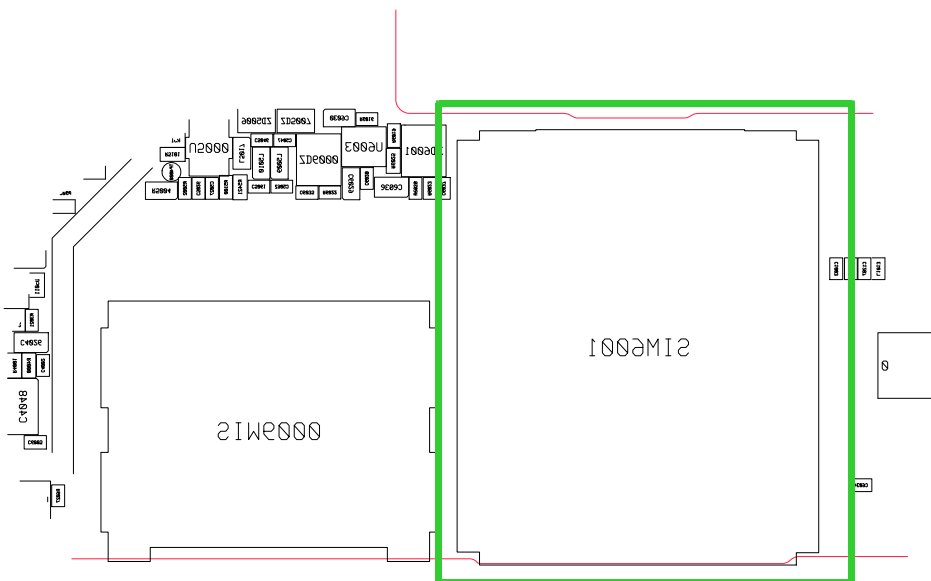
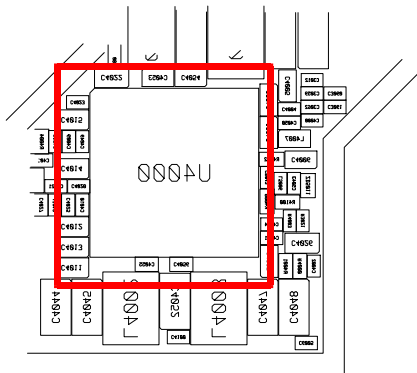
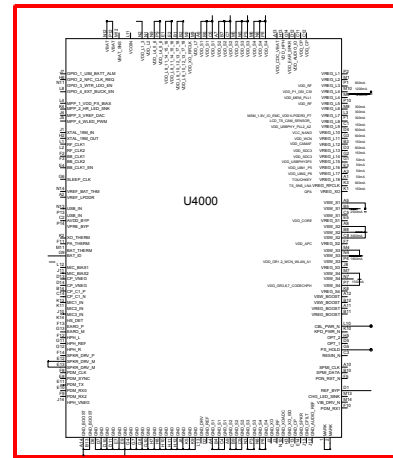
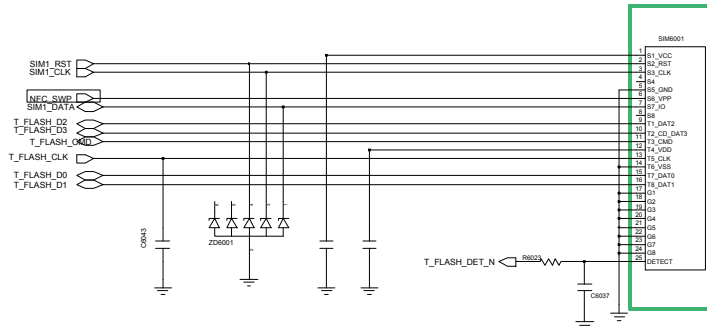
### 8-4-3. No Service



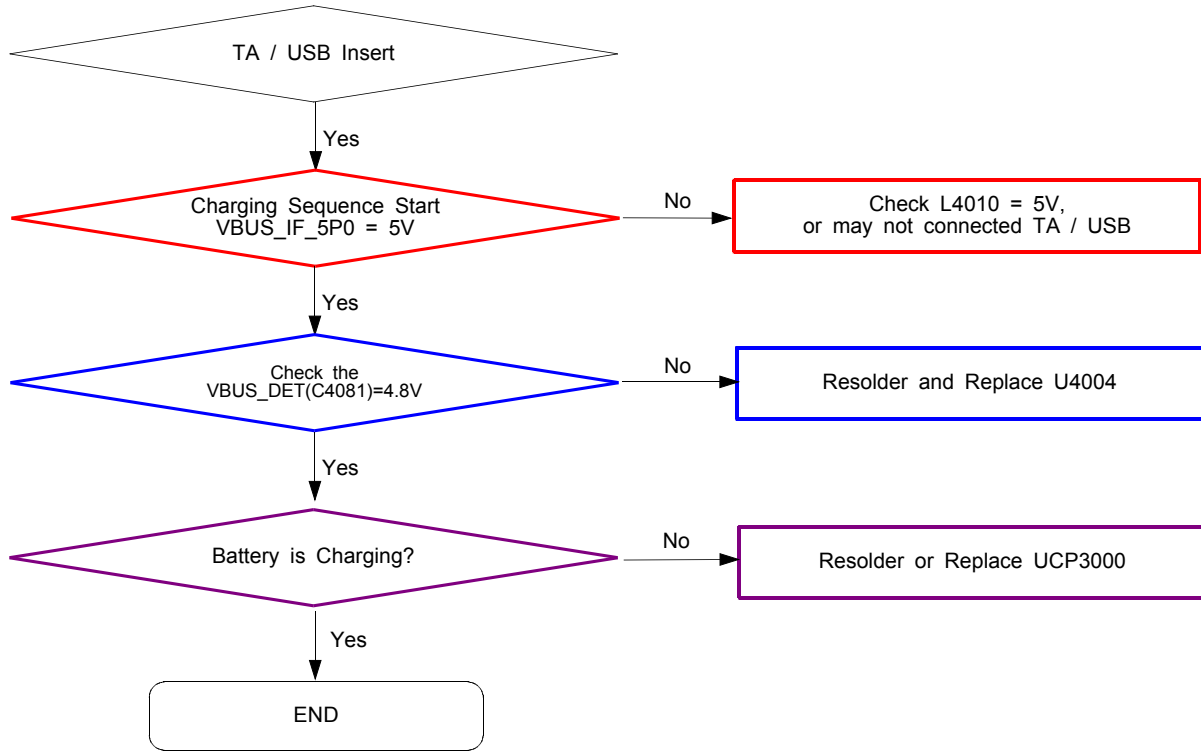


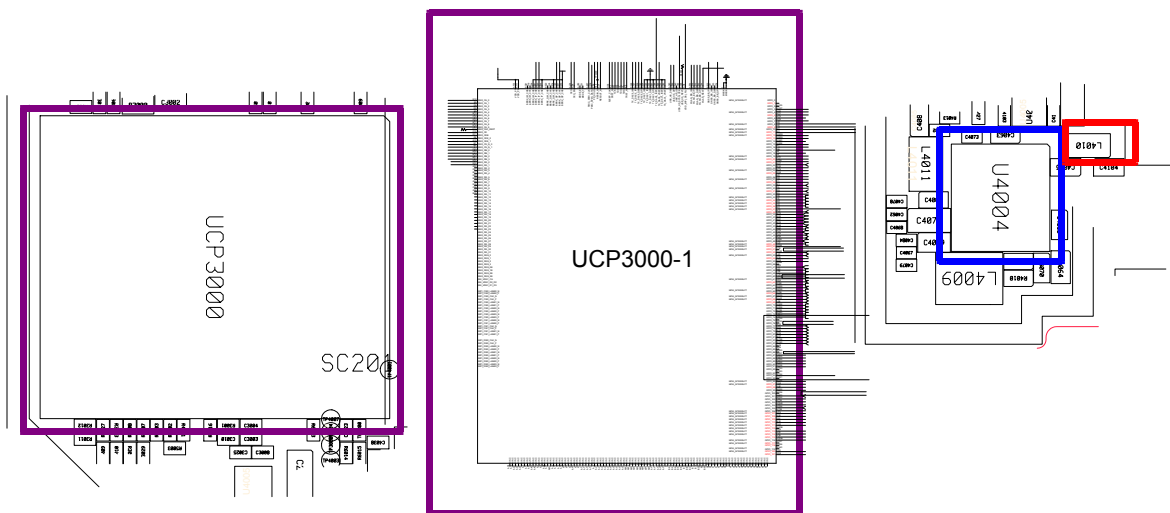
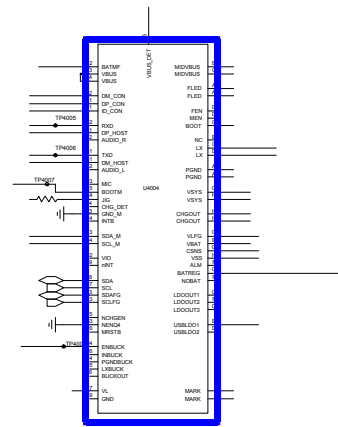
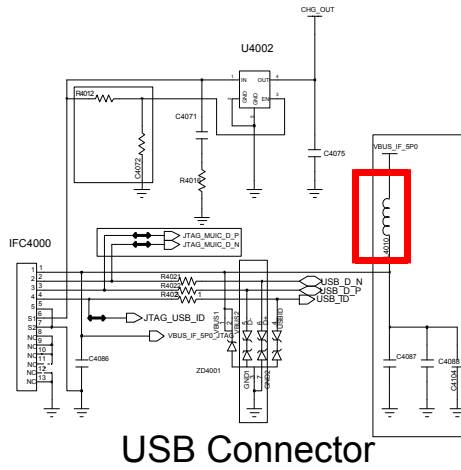
#### 8-4-4. Sim Part - Sim Card



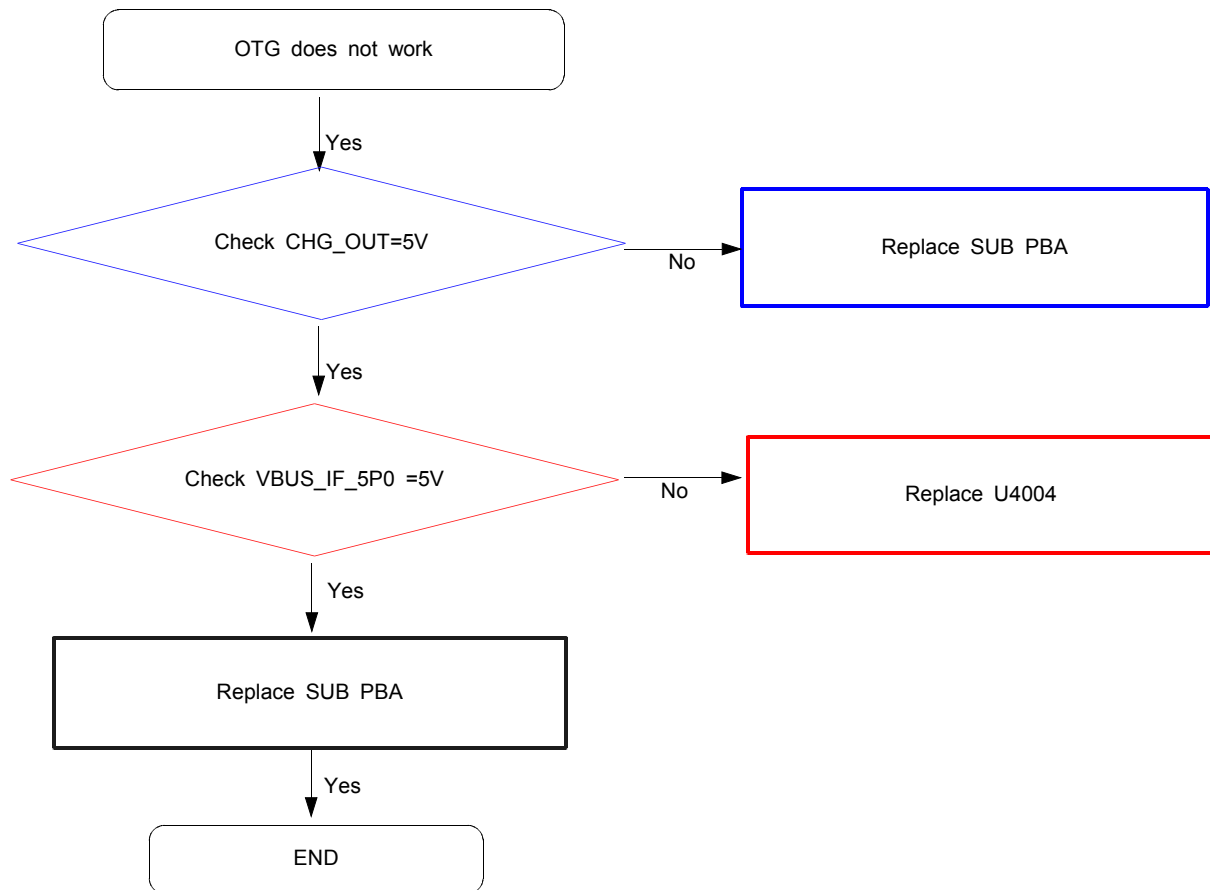


### 8-4-5. Charging Part

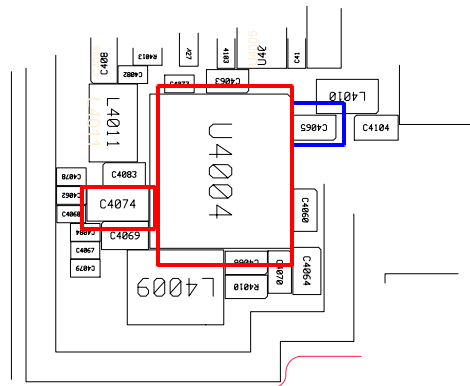
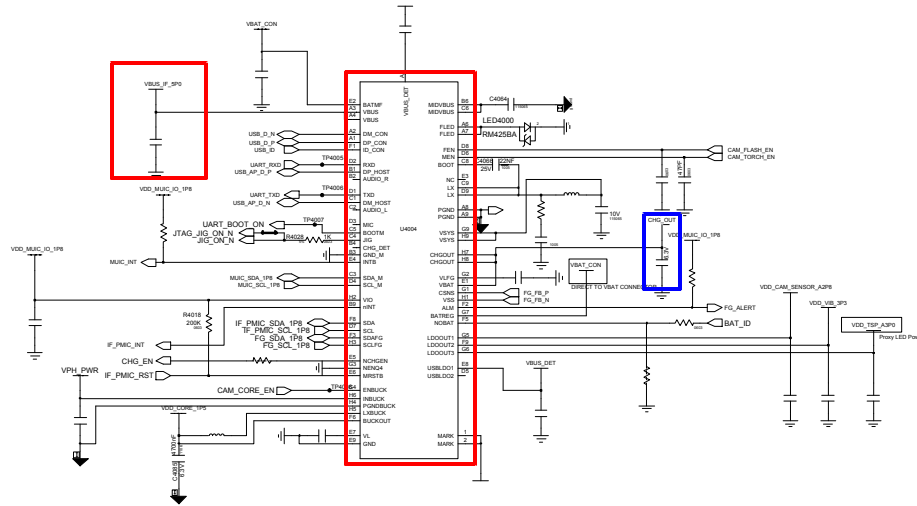




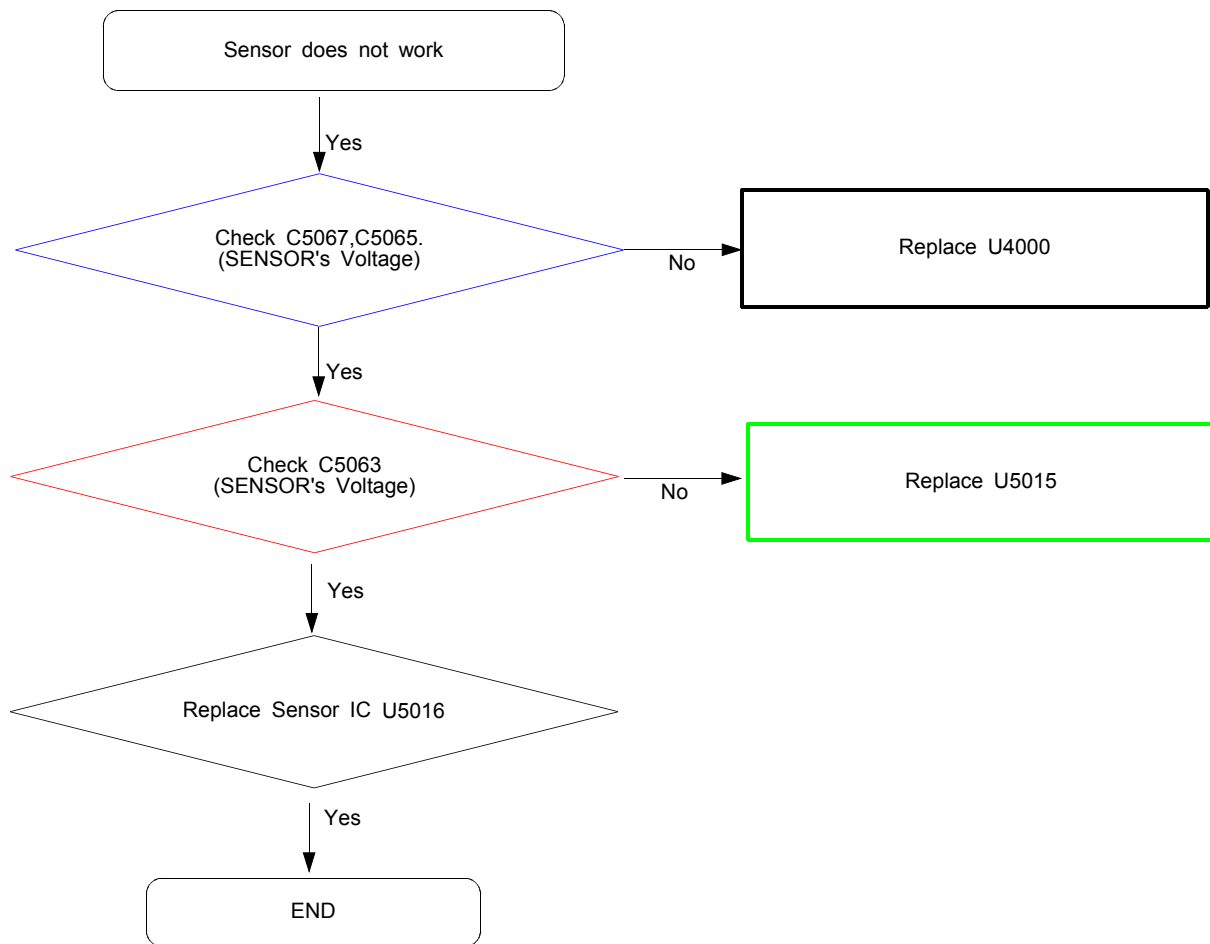
### 8-4-6. OTG

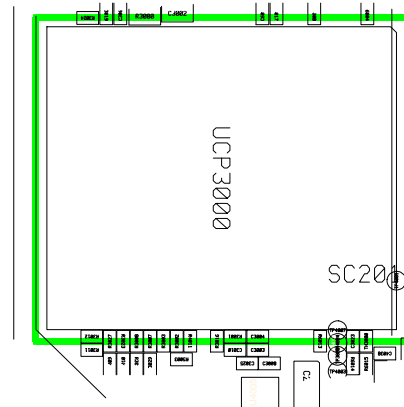
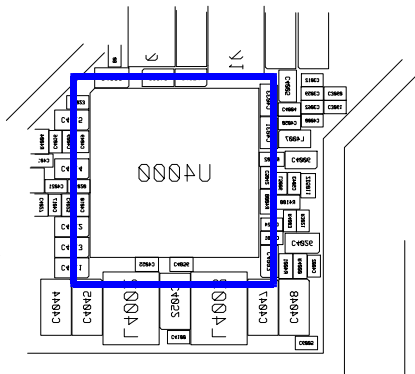
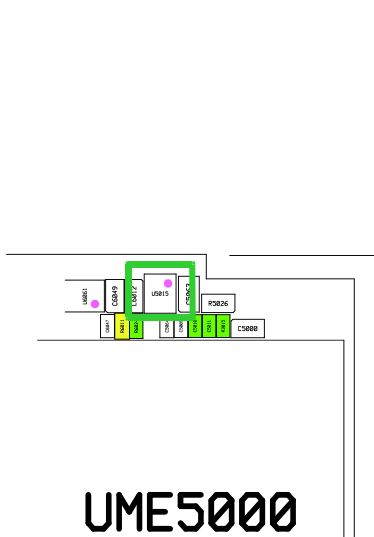
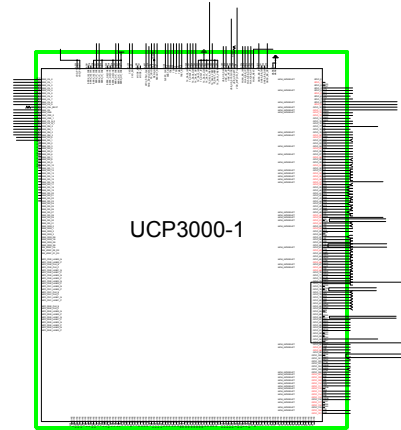
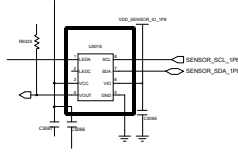
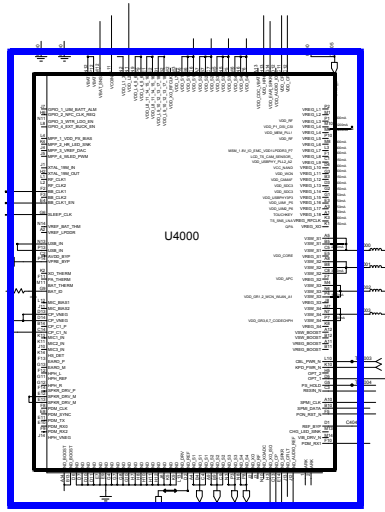




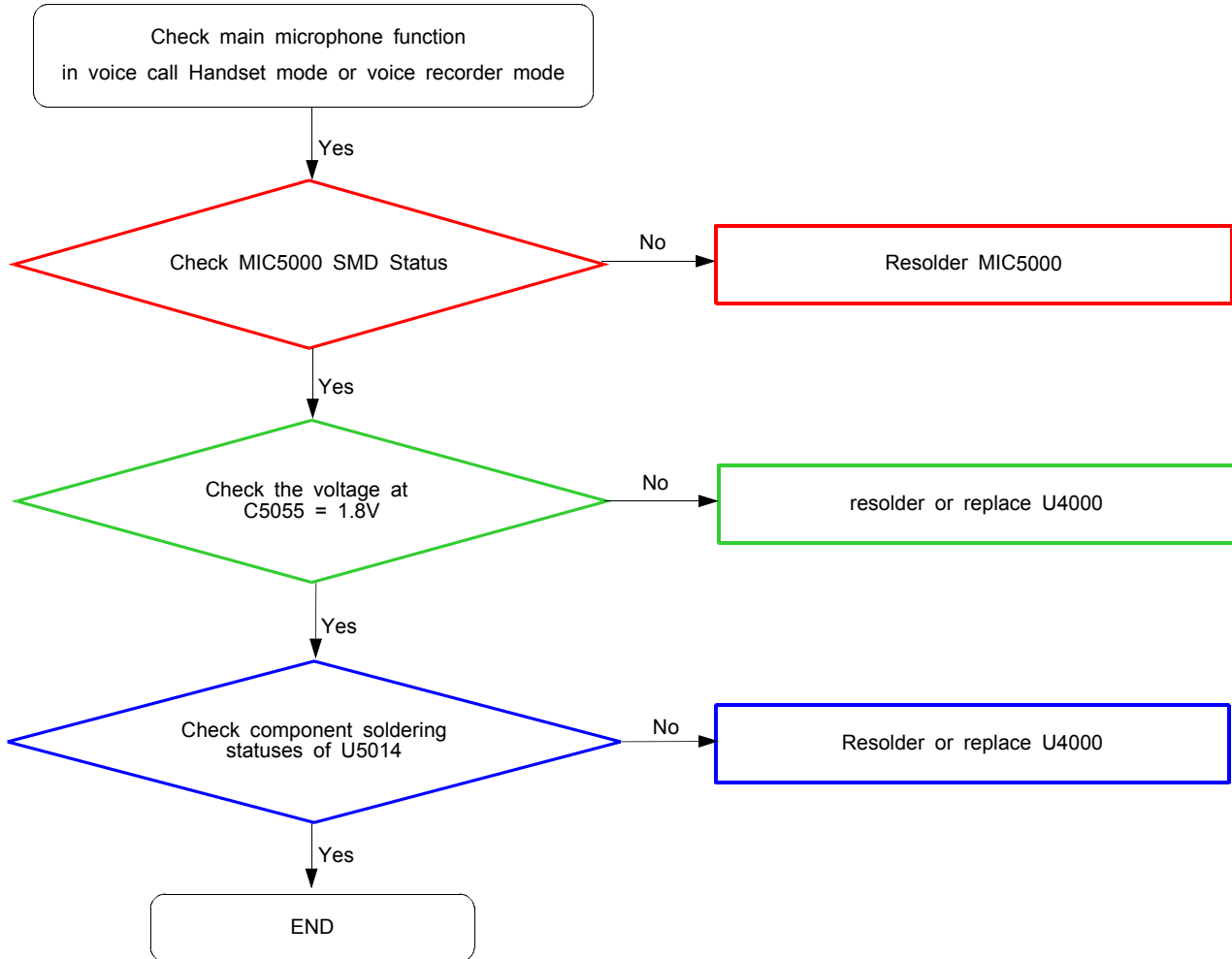


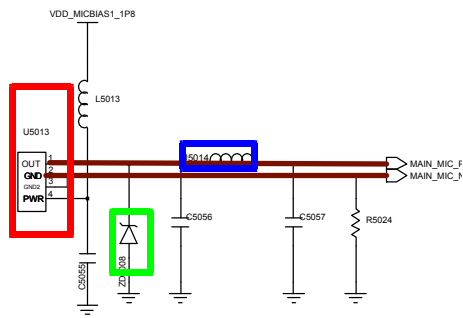
### 8-4-7. Proxy Sensor



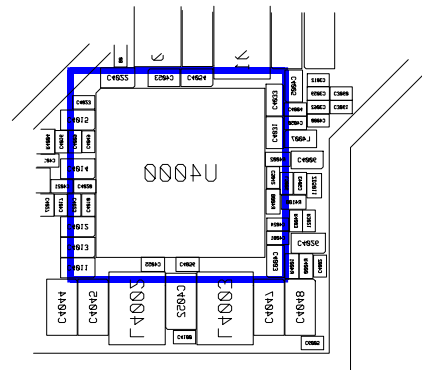
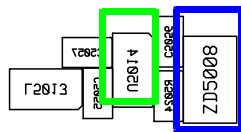
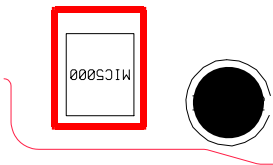
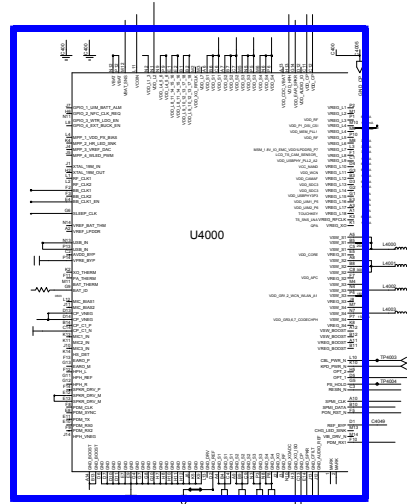


### 8-4-8 Microphone Part - Main MIC

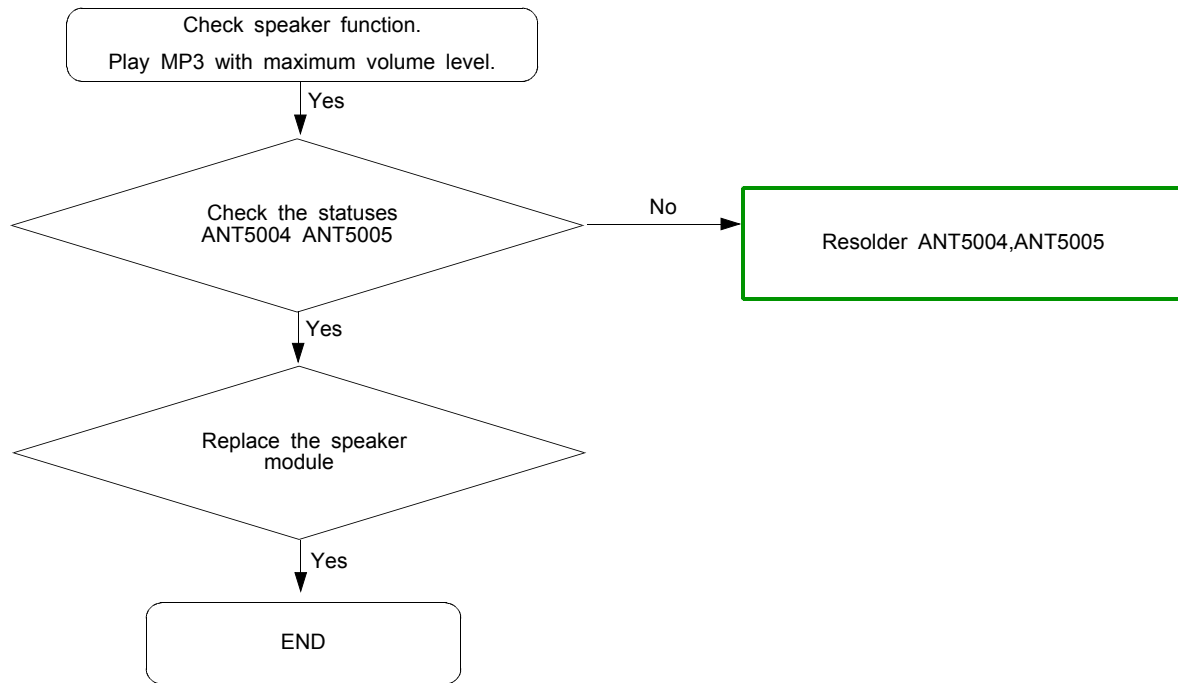


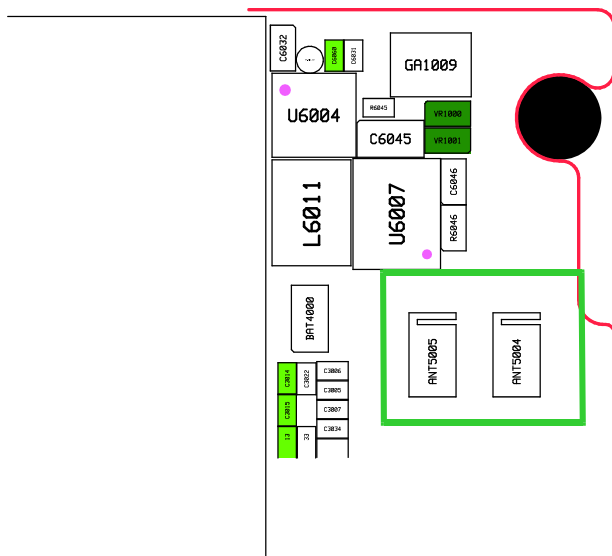
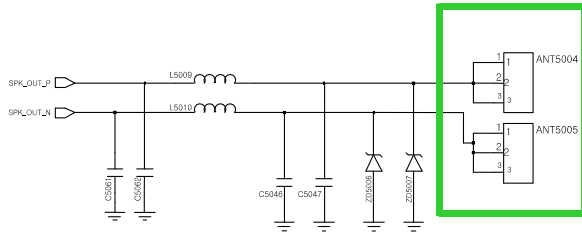


Main MIC

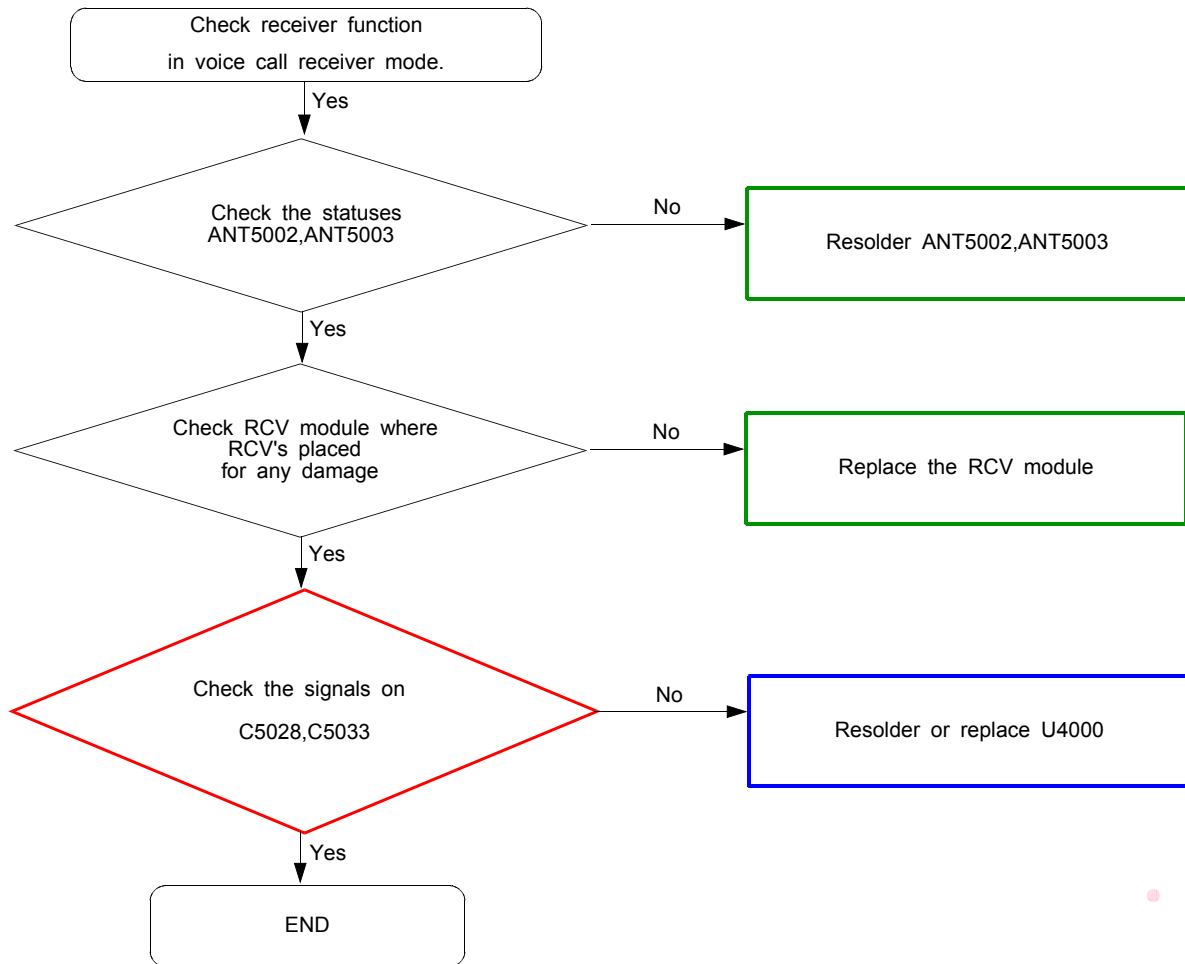


### 8-4-9. Speaker Part

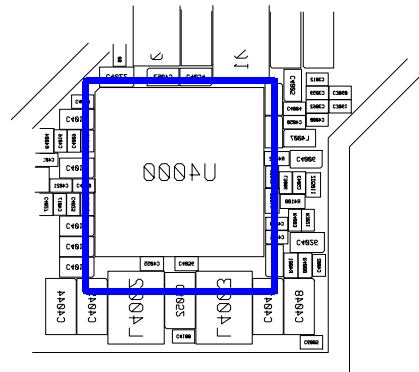
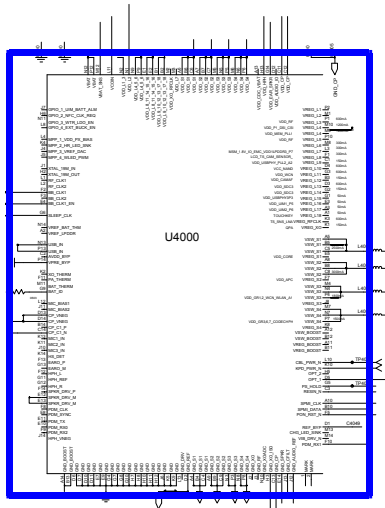
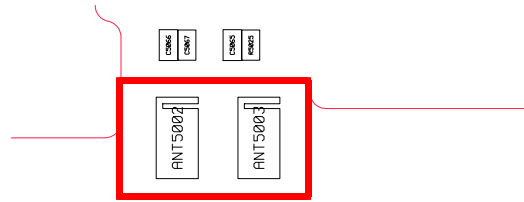
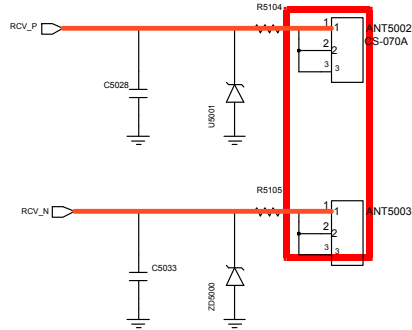




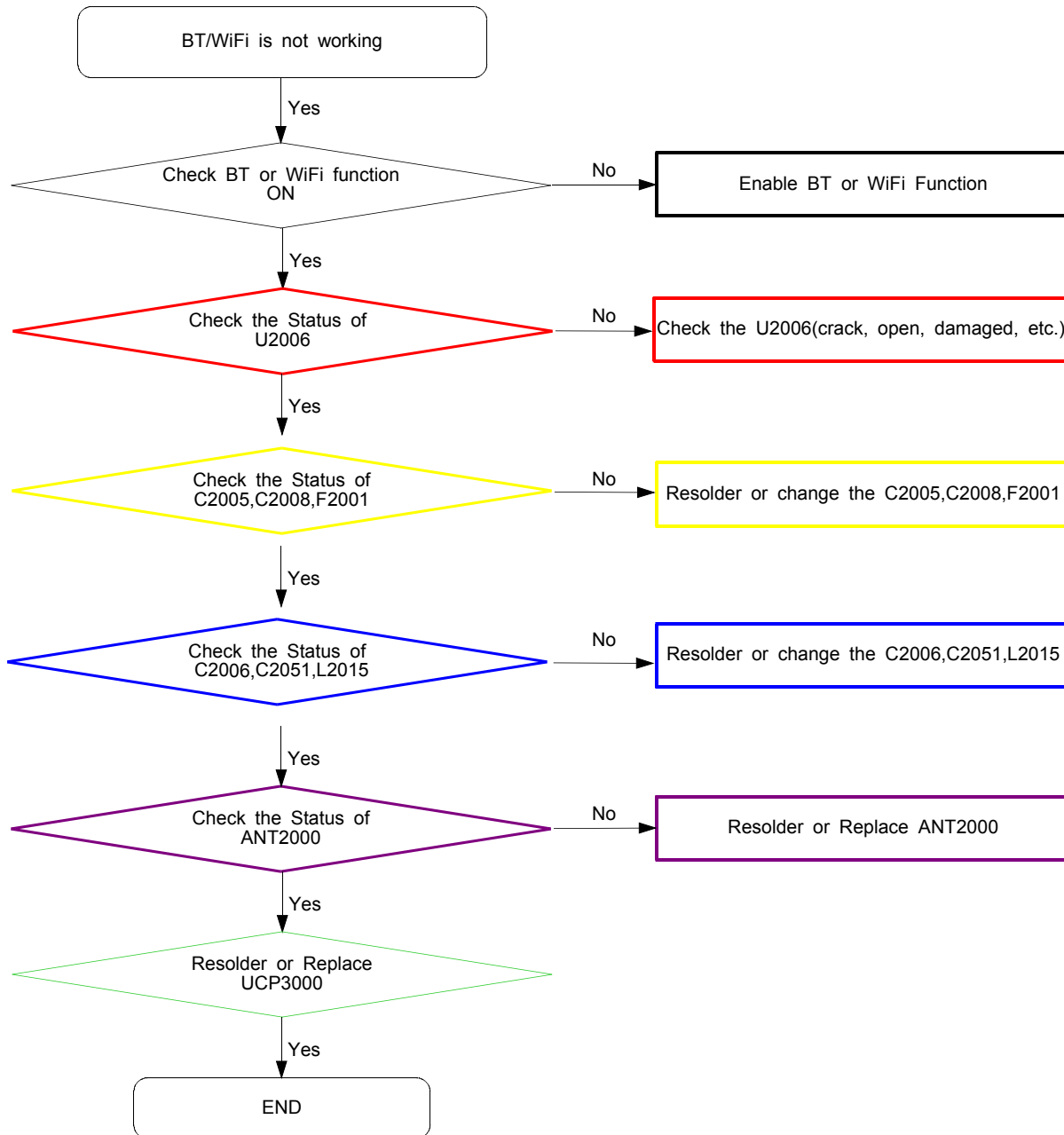
### 8-4-10. Receiver Part

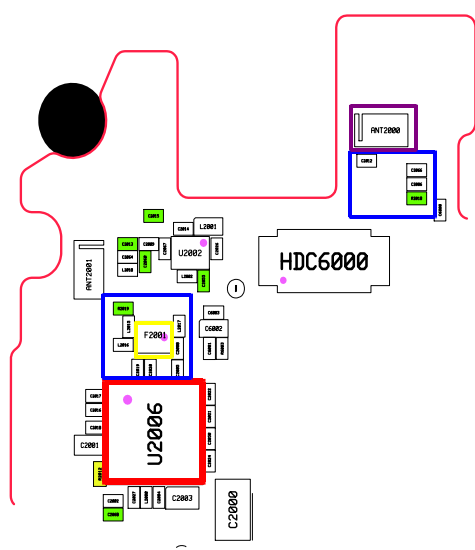
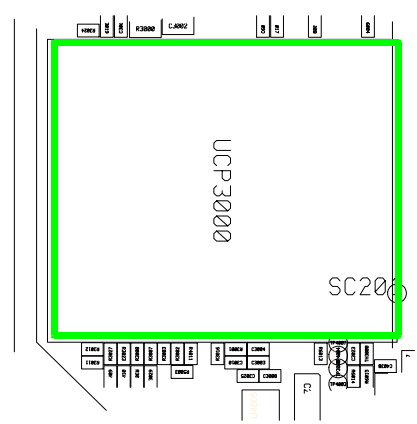
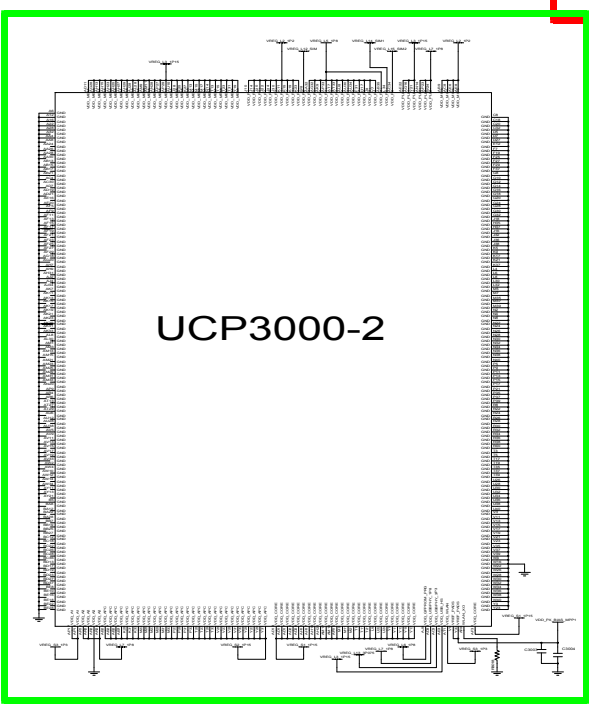
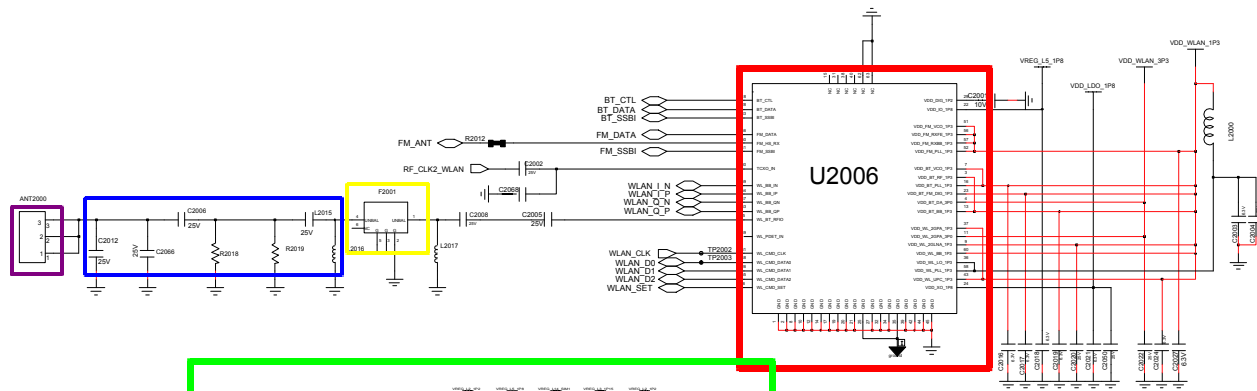




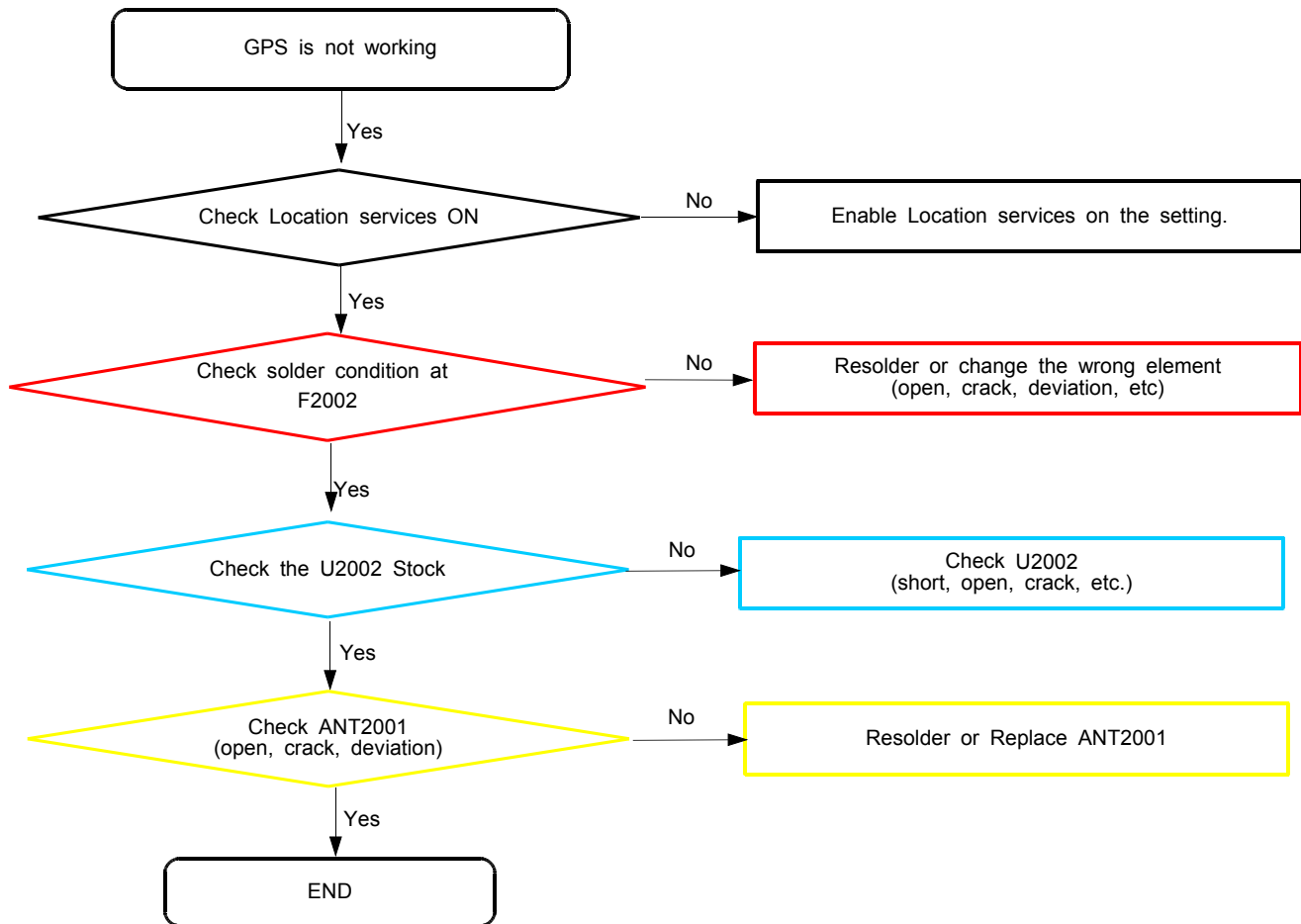


### 8-4-11. BT/WIFI

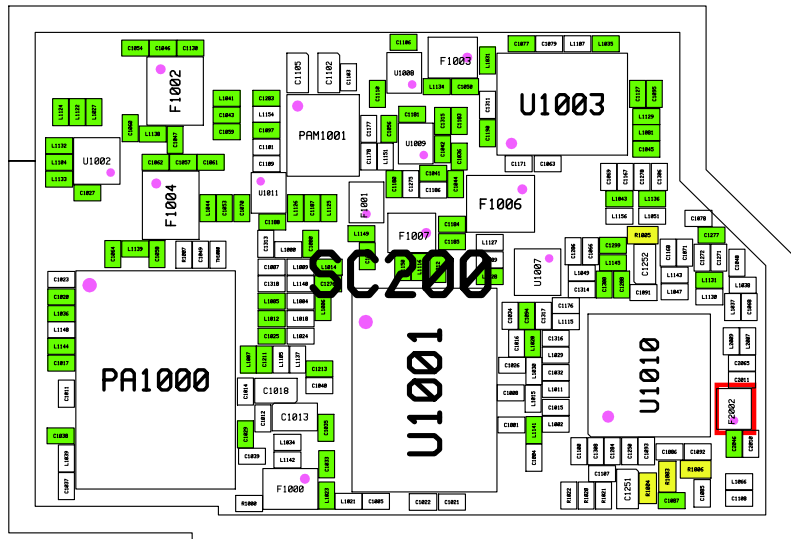
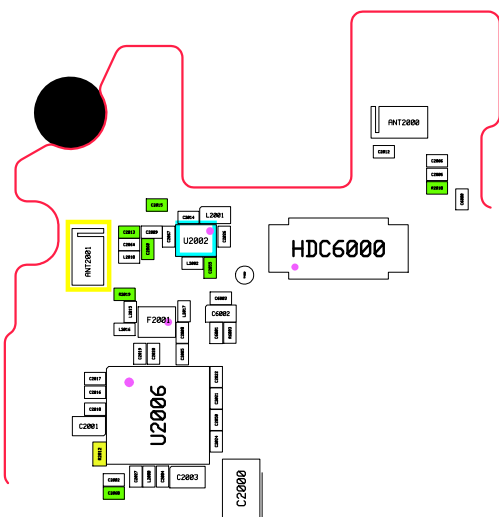
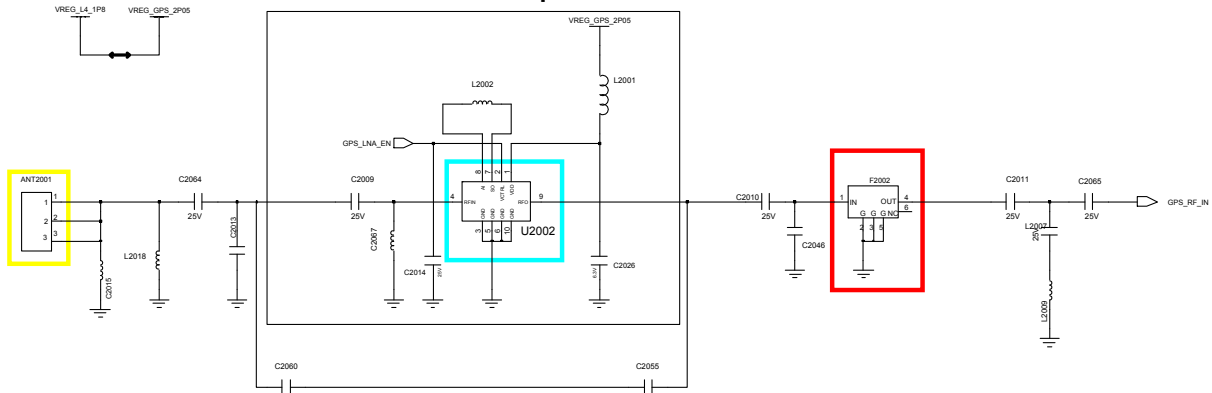




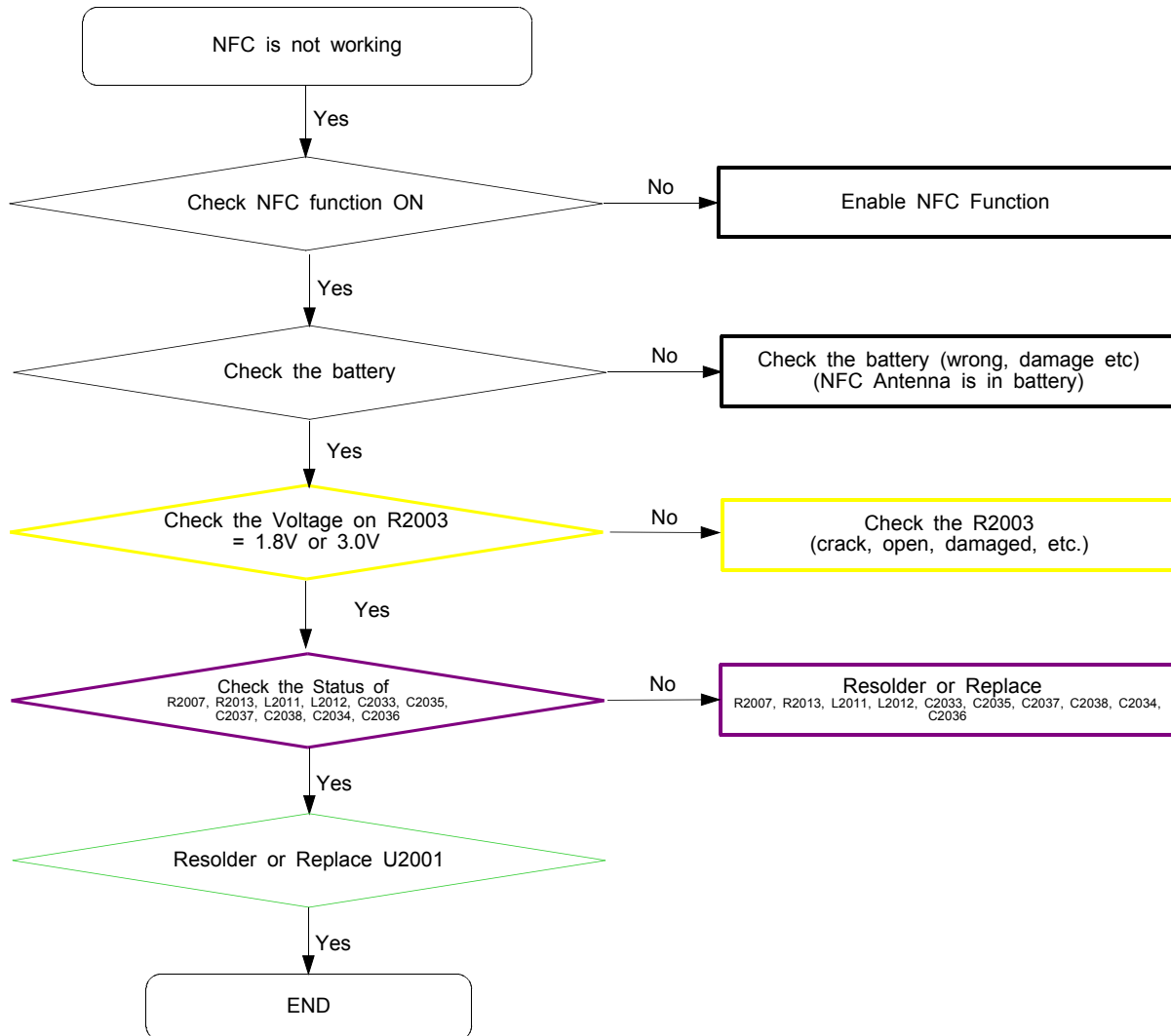
### 8-4-12. GPS

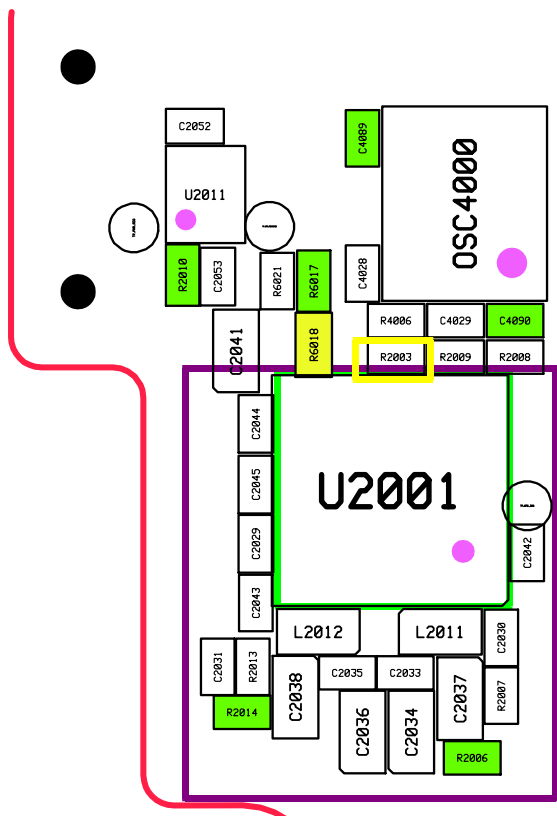
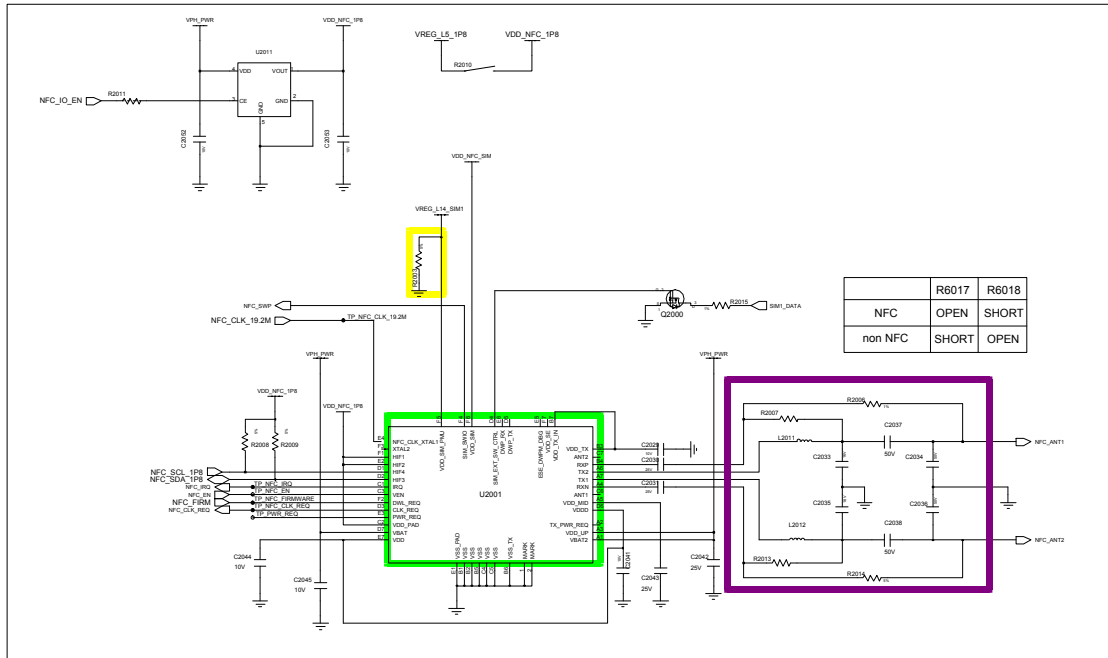


### GPS LNA Option

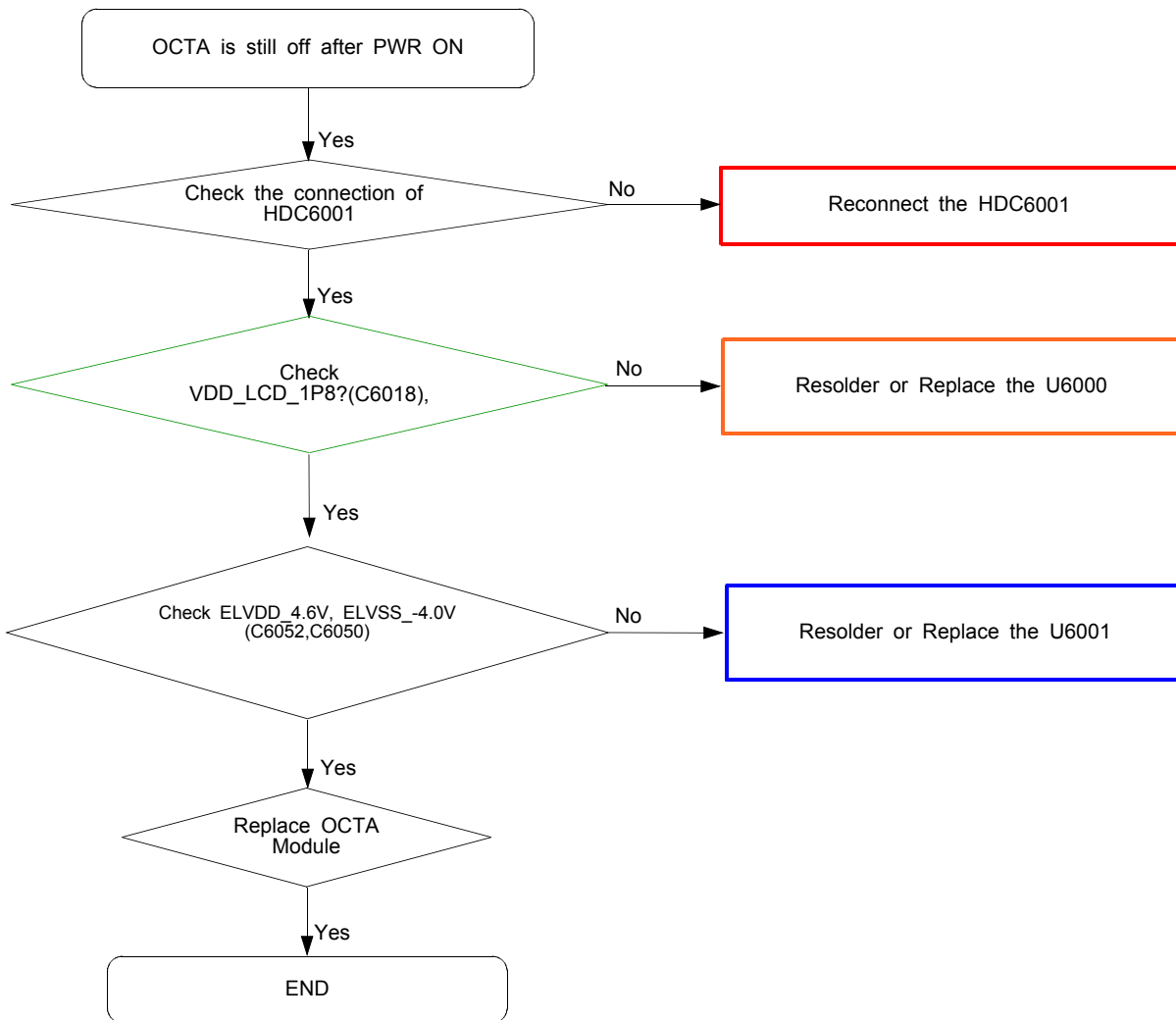


8-4-13. NFC



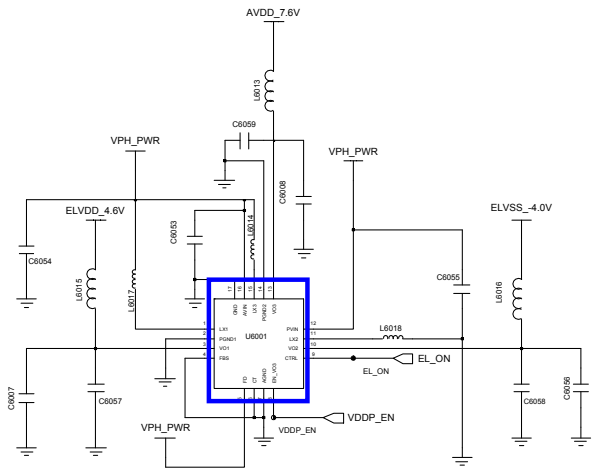
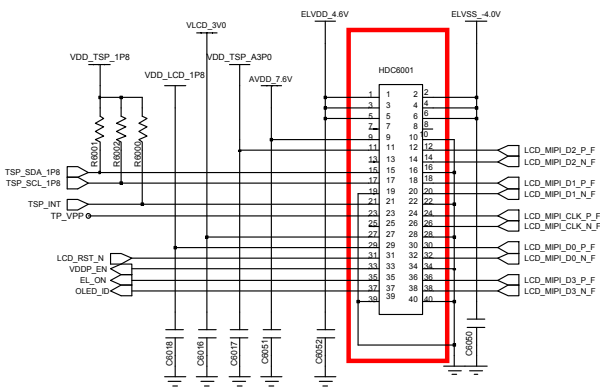


8-4-14. OCTA

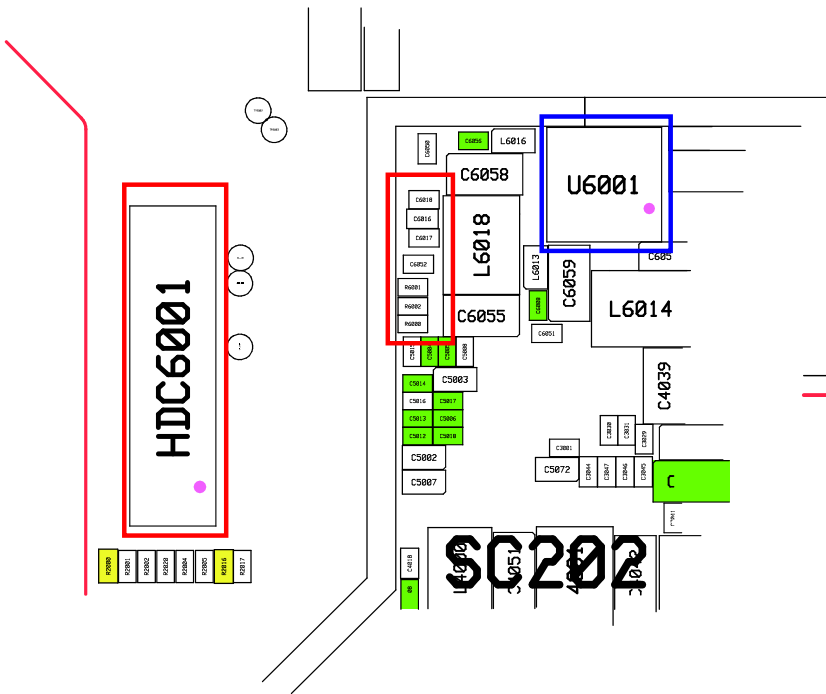
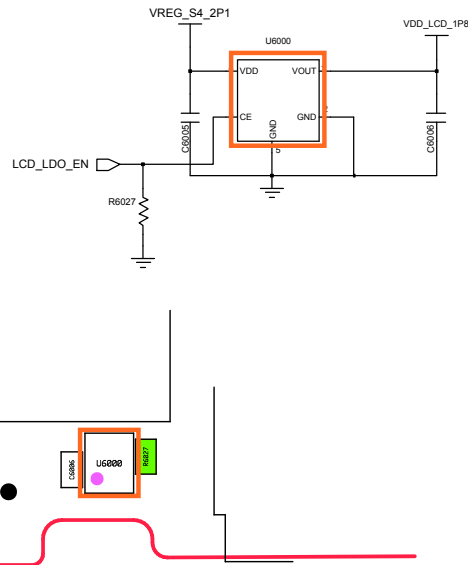




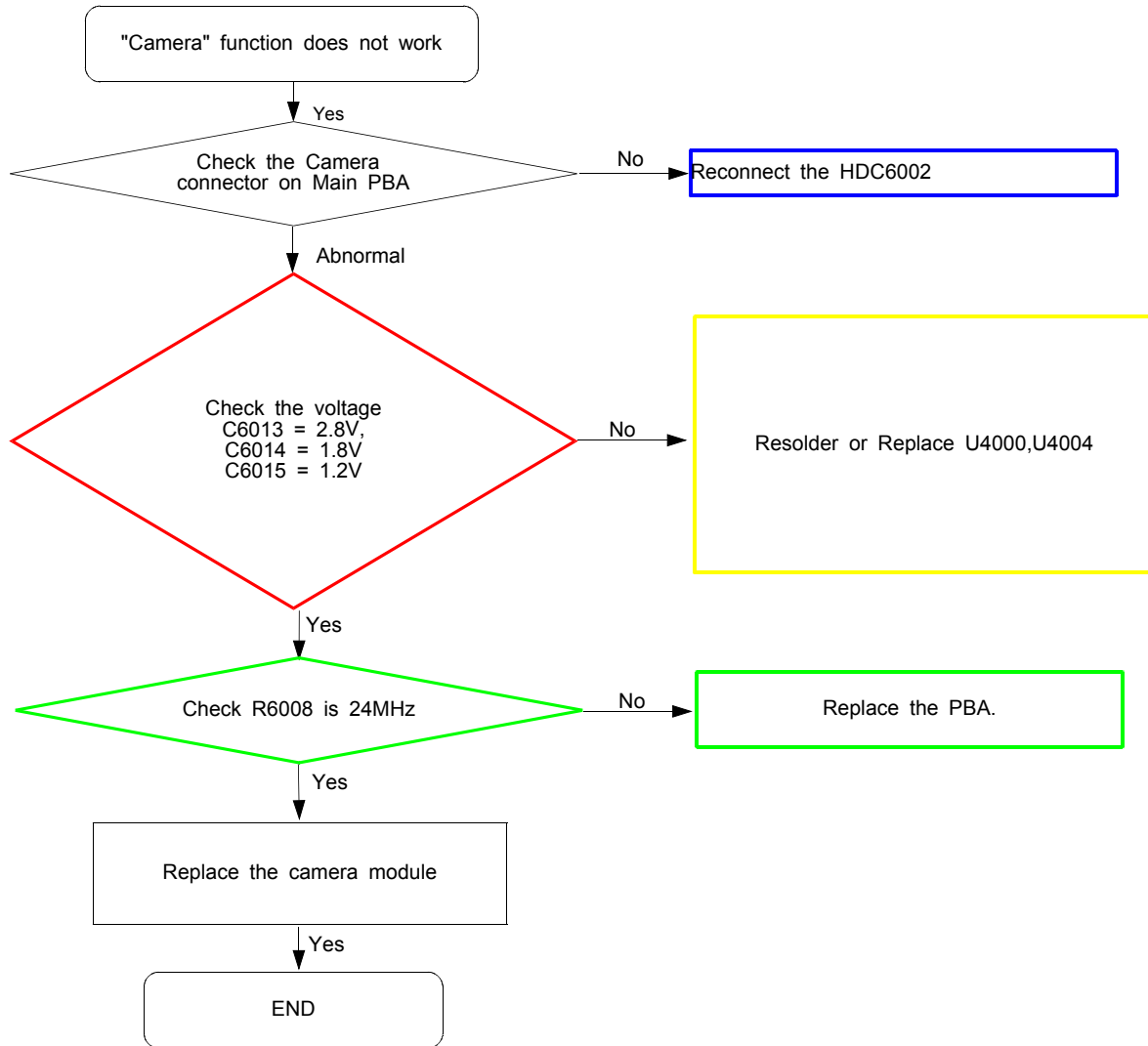
# DISPLAY PART

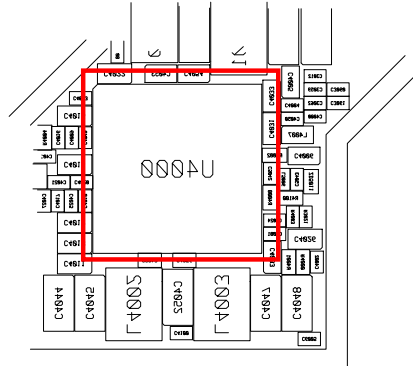
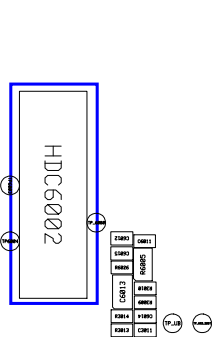
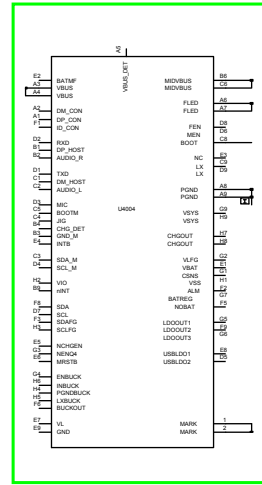
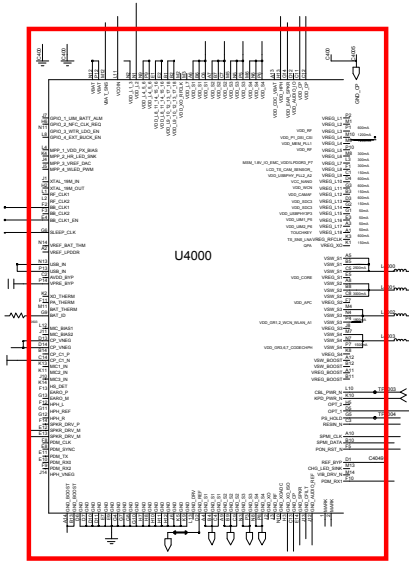
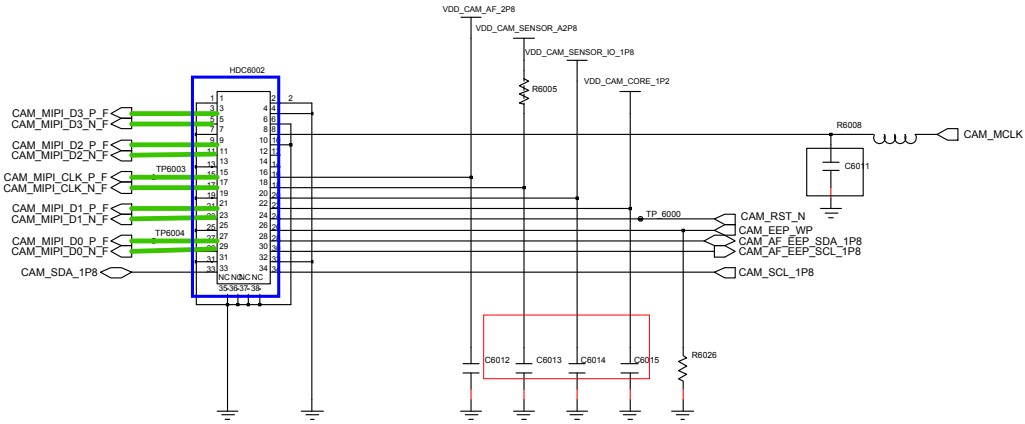


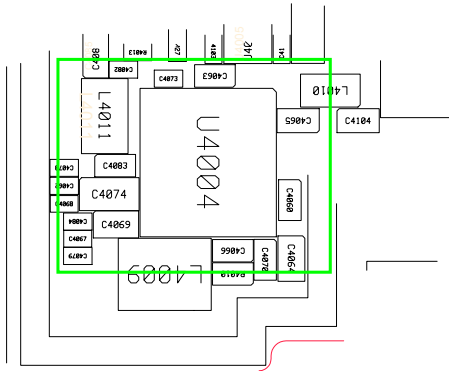
## OCTA DCDC



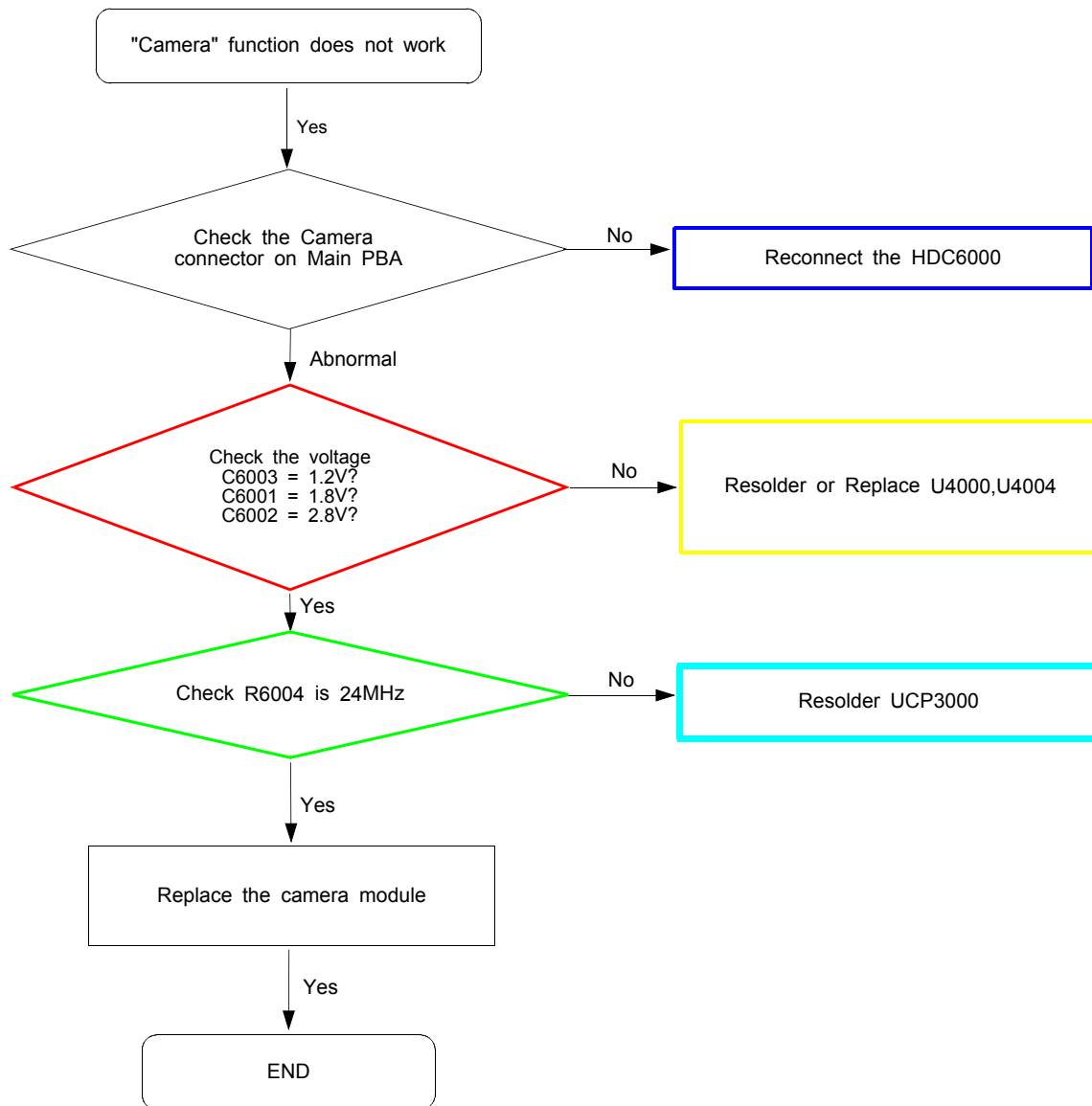
8-4-15. 13M CAM

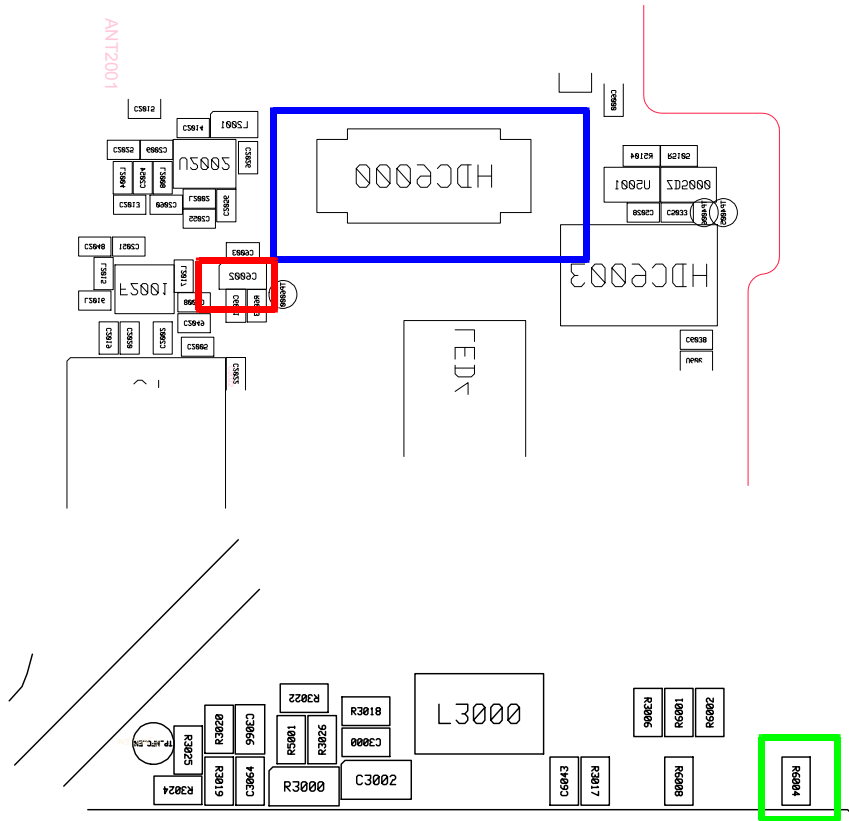
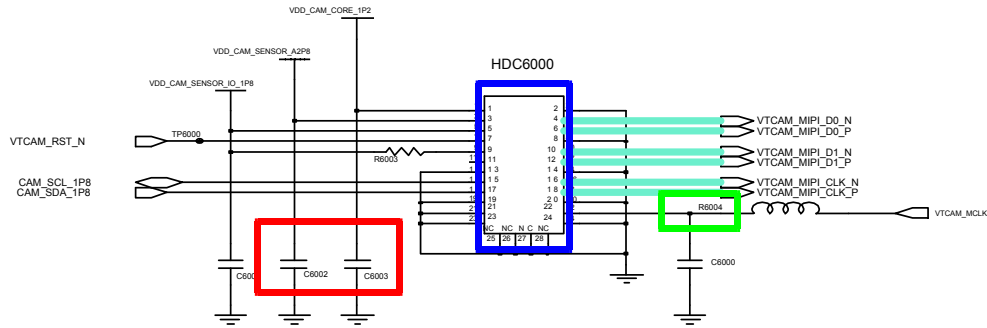


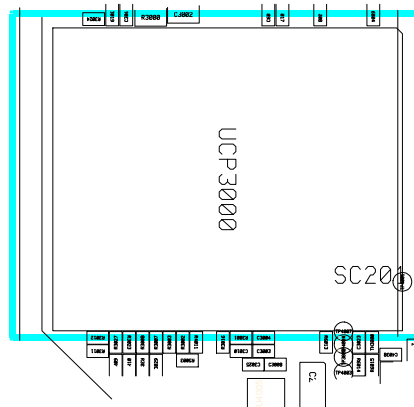
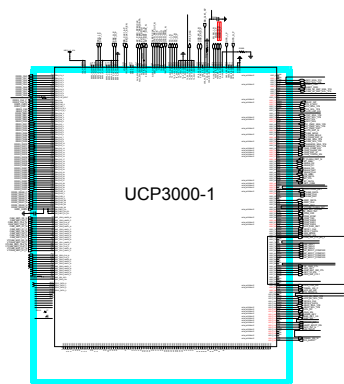
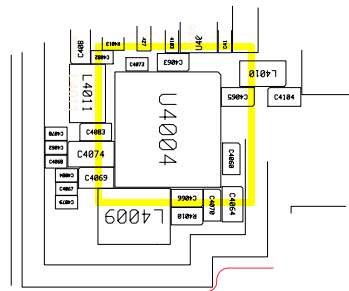
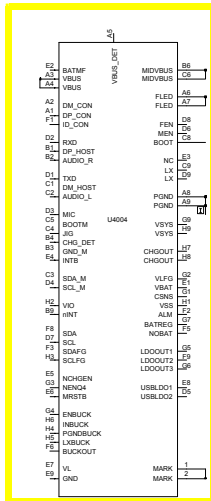
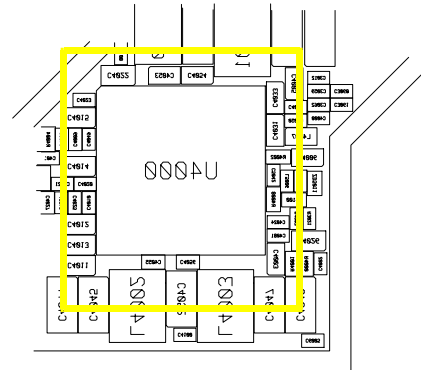
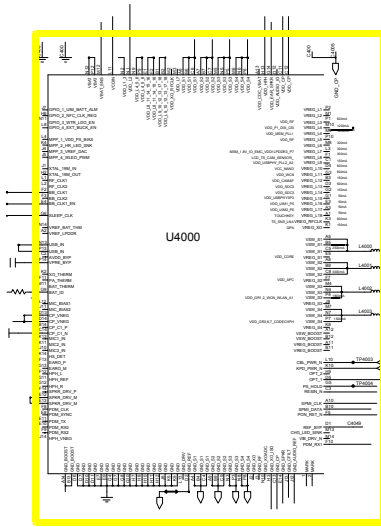




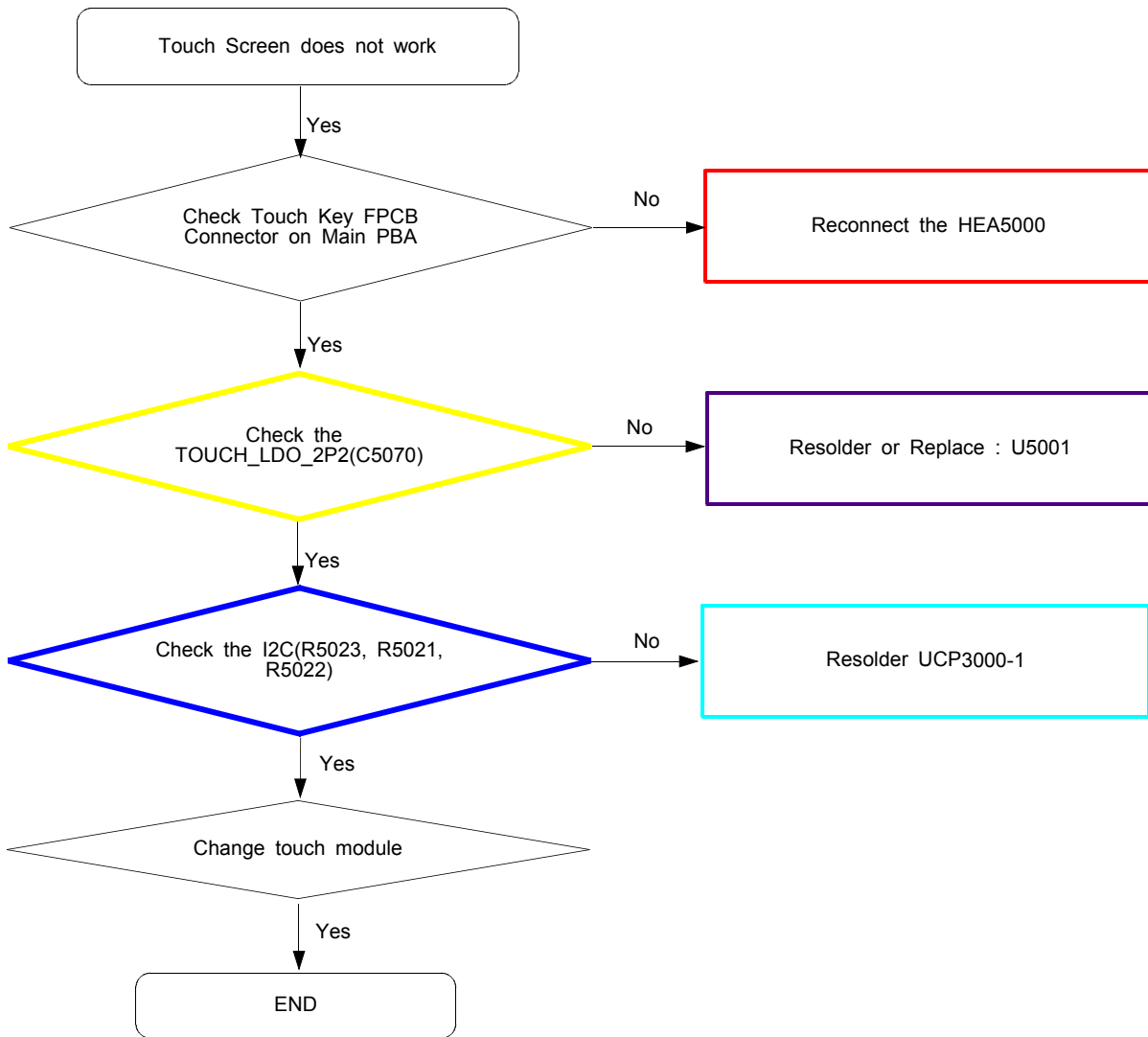
8-4-16. VT CAM



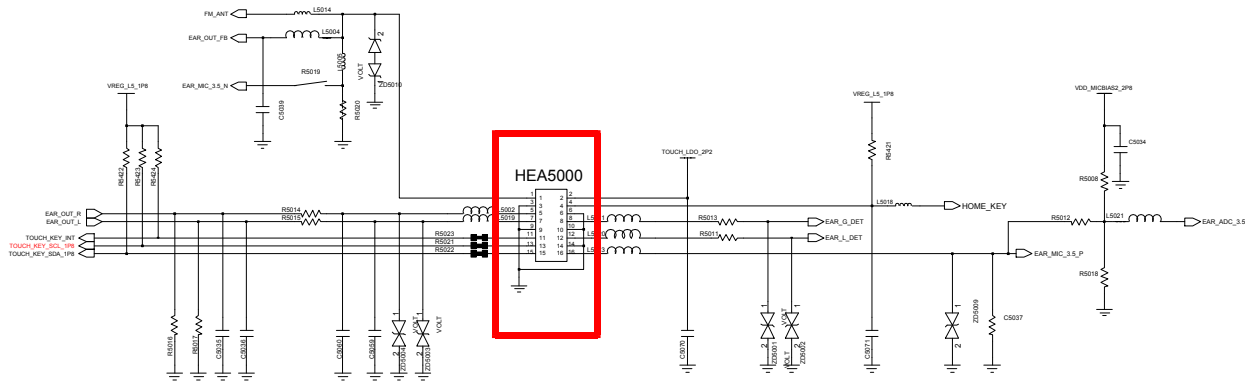




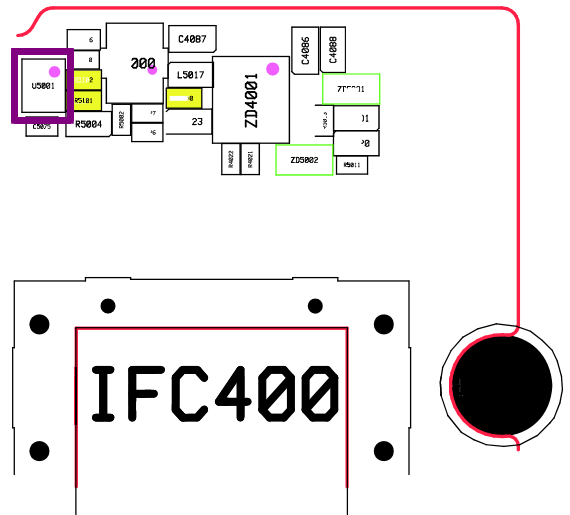
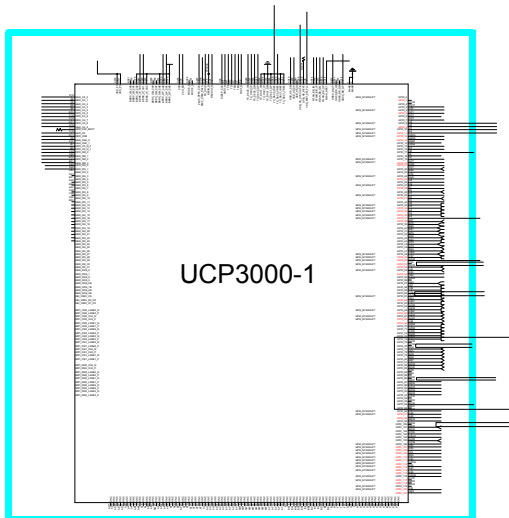
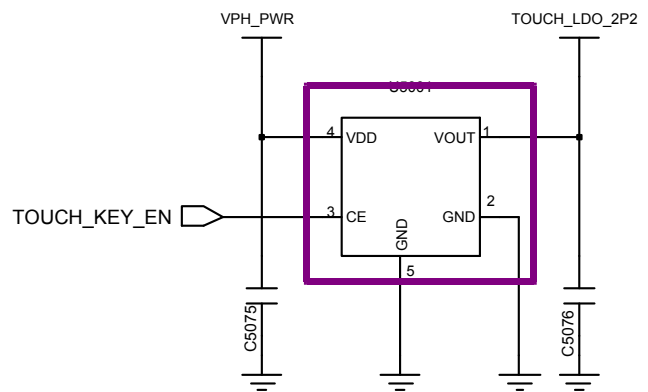
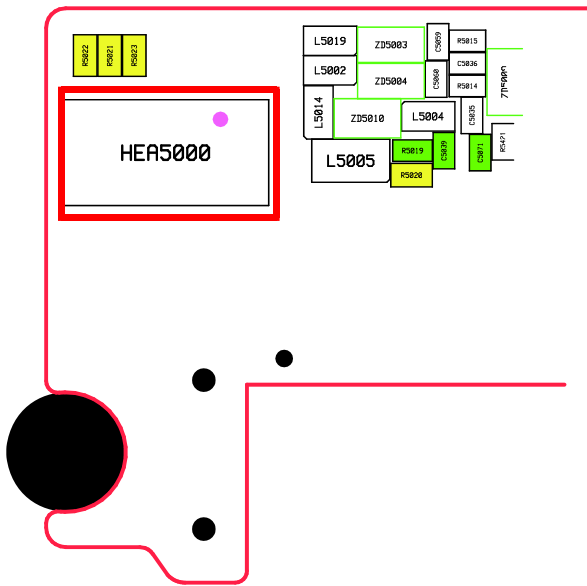
### 8-4-17. Touch Key FPCB



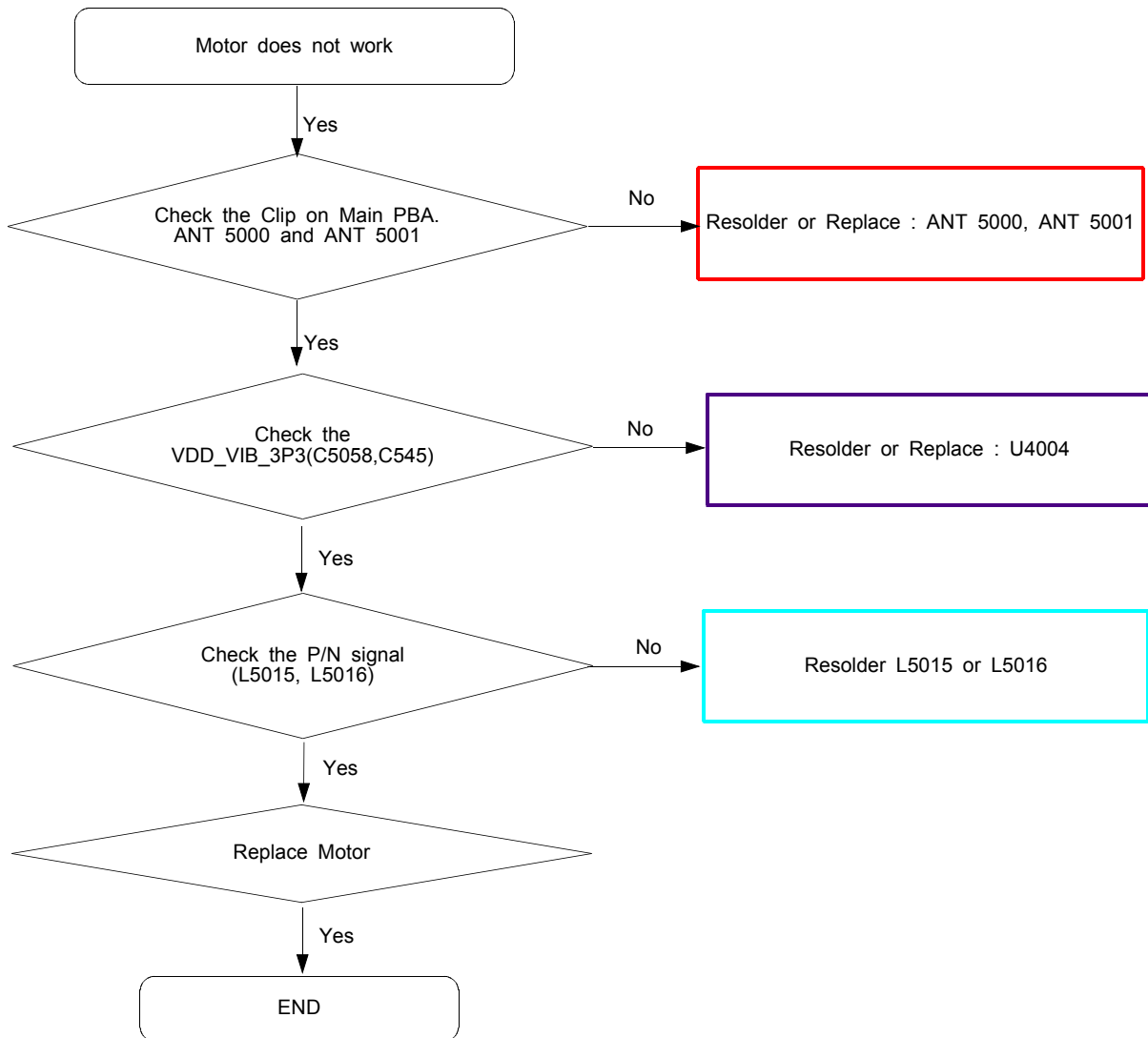


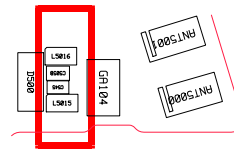
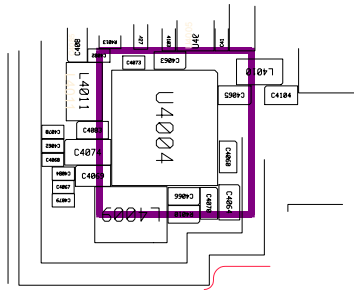
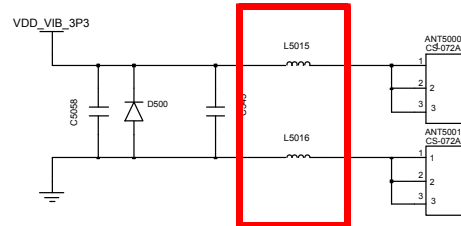
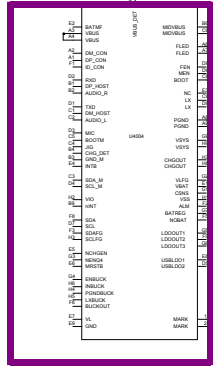


**EARJACK + HOME KEY + TOUCH KEY**

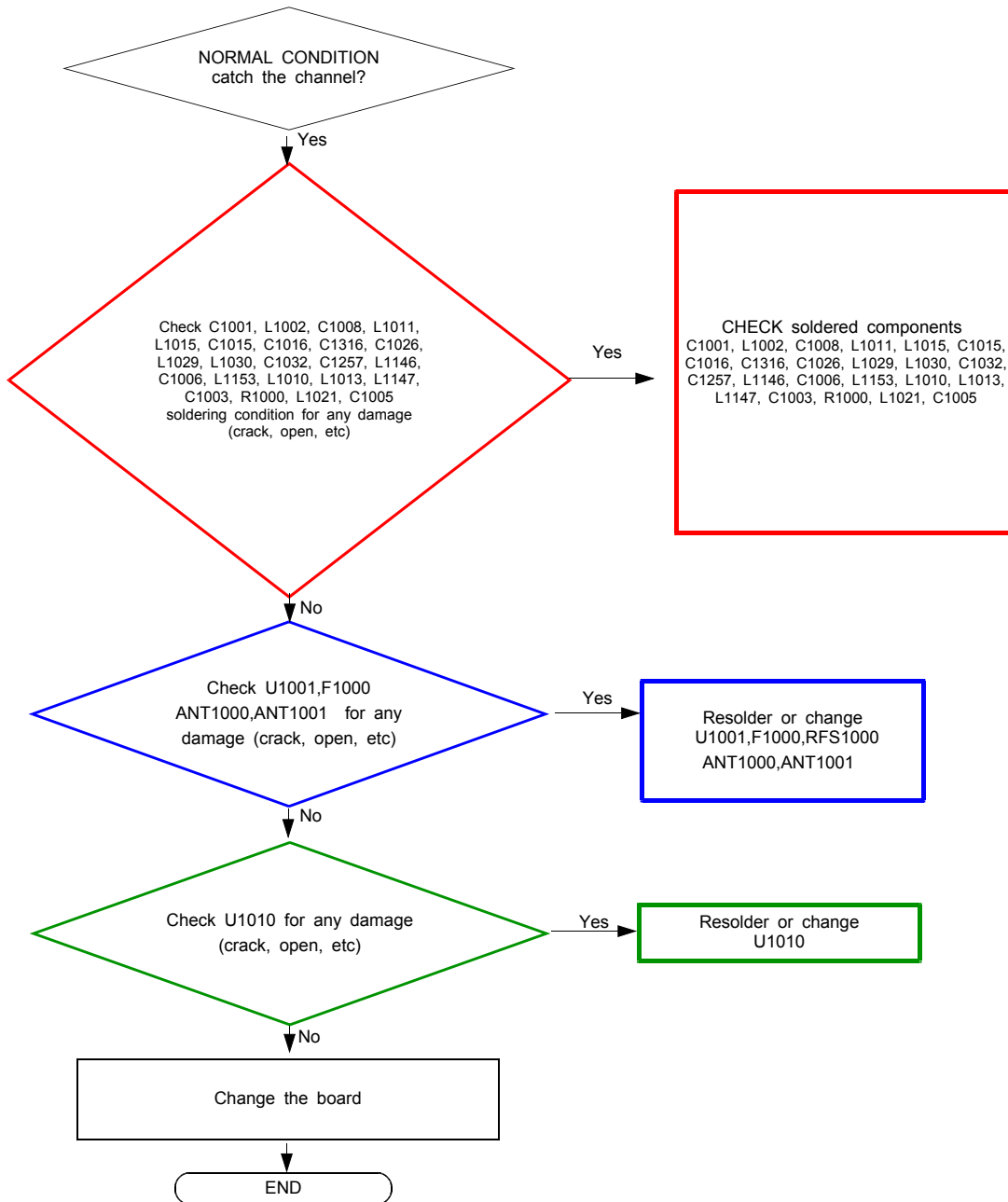


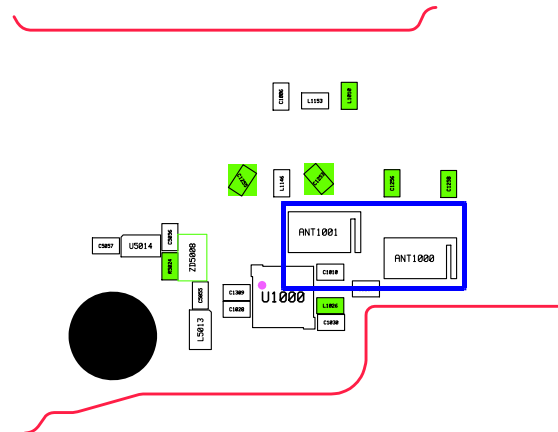
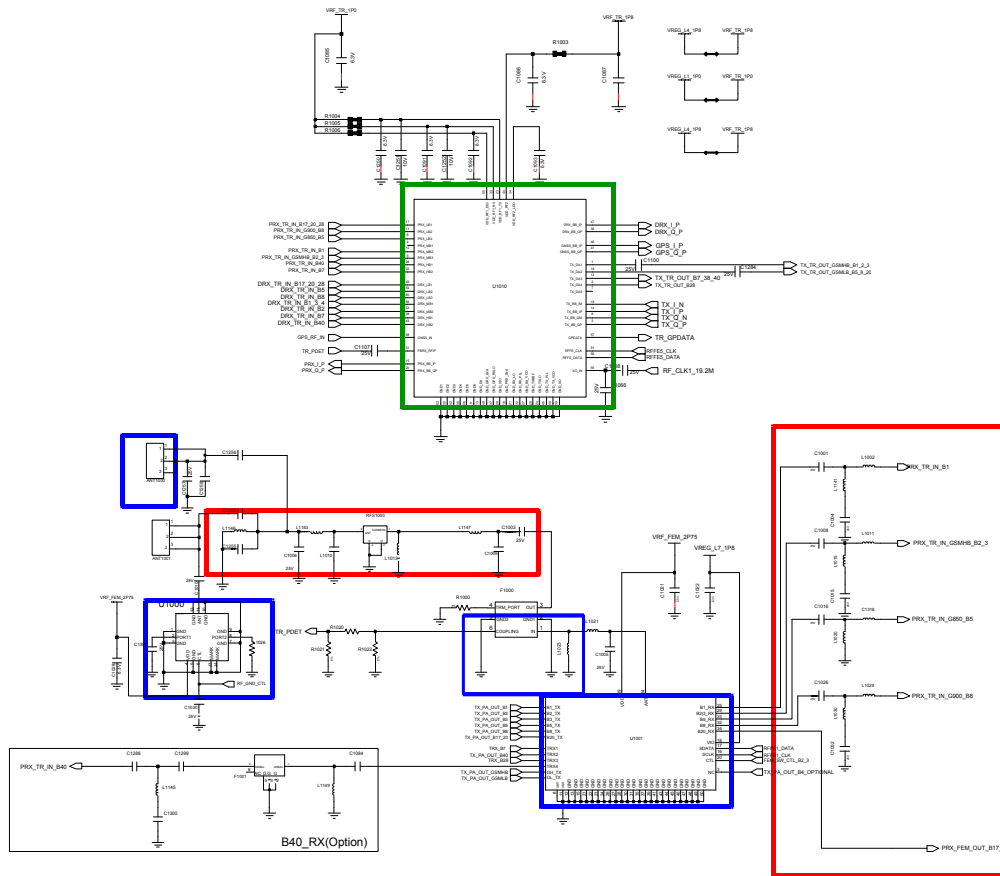
8-4-18. Motor



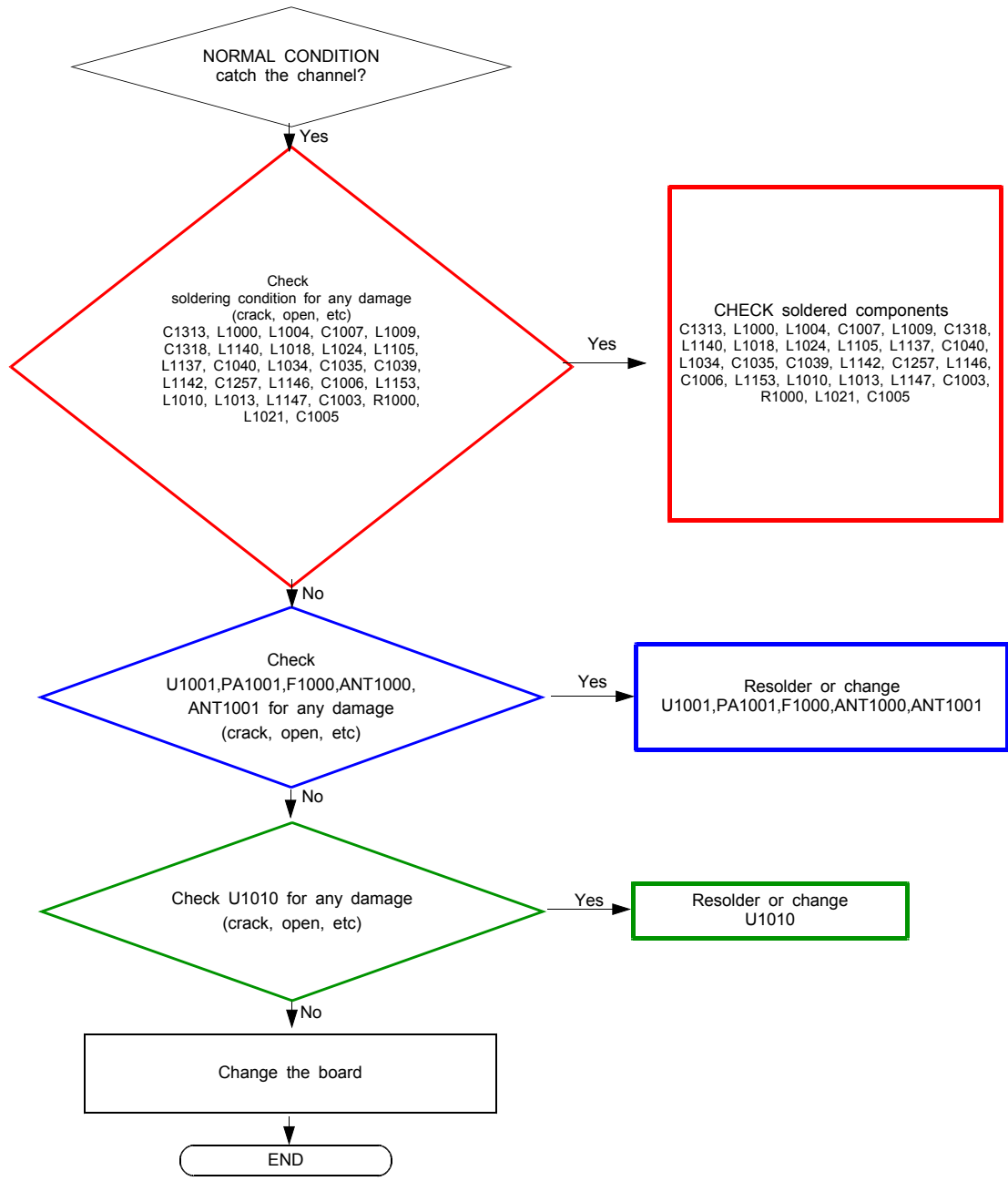


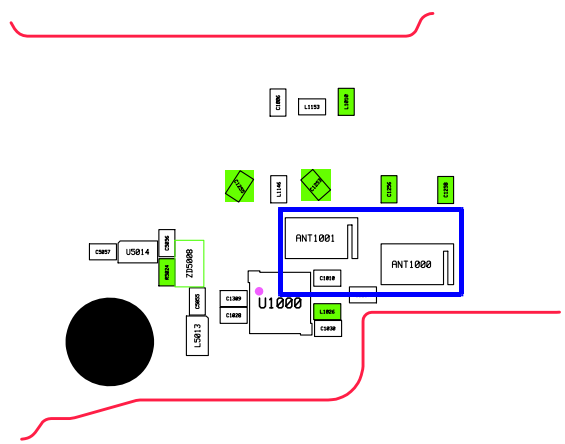
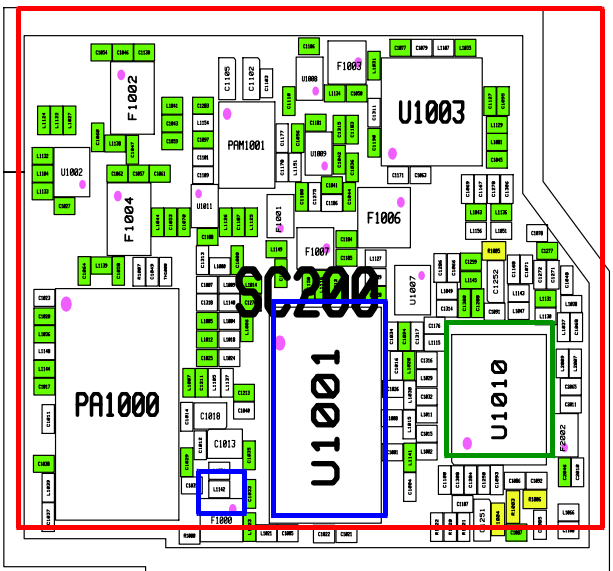
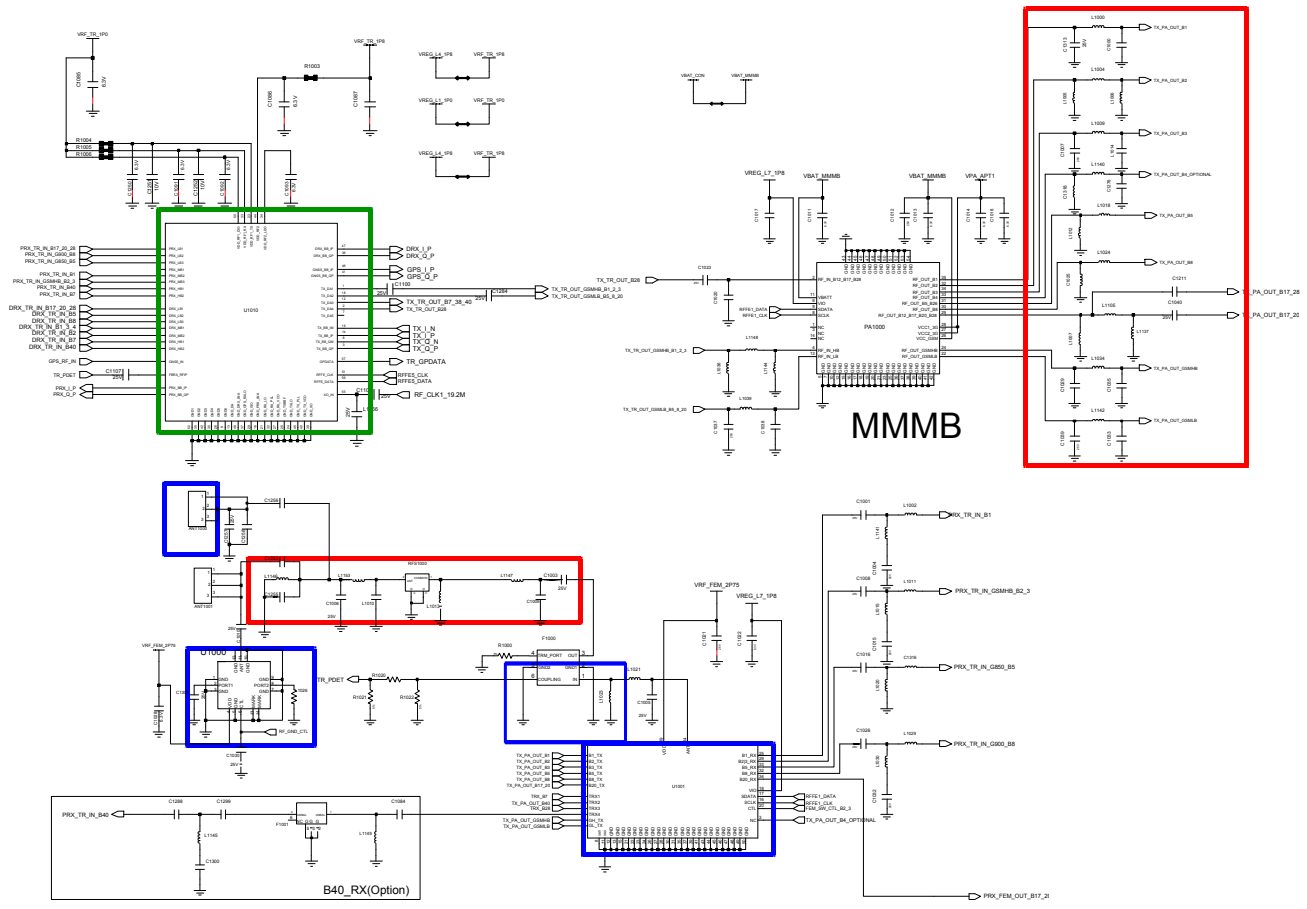
8-4-19. GSM 850,900,1800,1900 / WCDMA 1,2,5,8 / LTE 1,3,5,7,8,20 RX



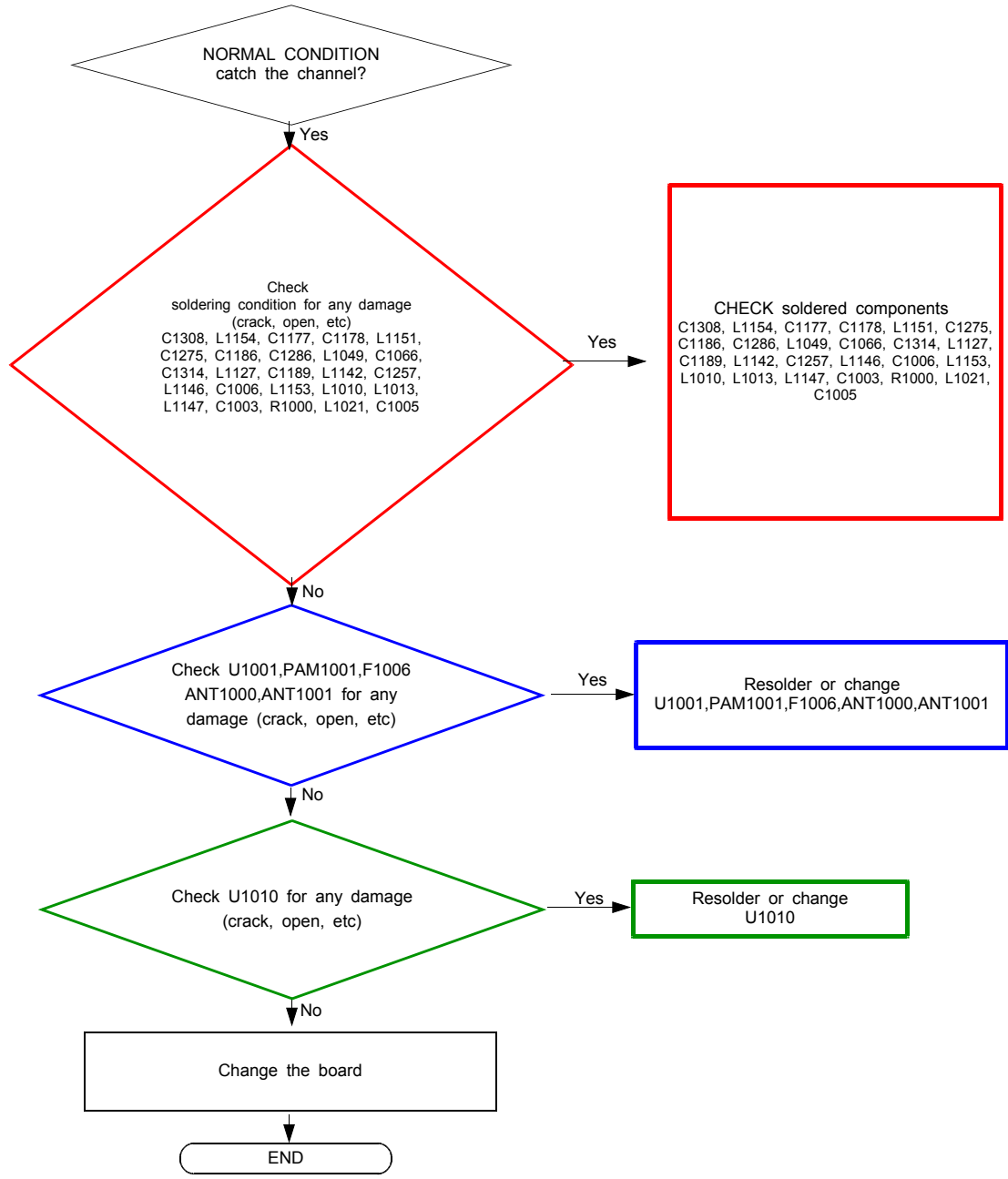


8-4-20. GSM 850,900,1800,1900 / WCDMA 1,2,5,8 / LTE 1,3,5,7,8,20 TX

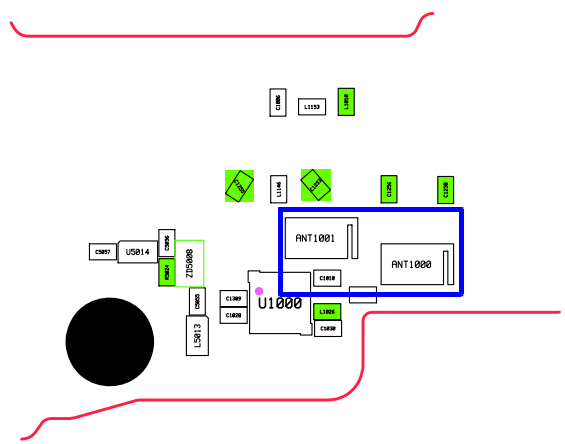
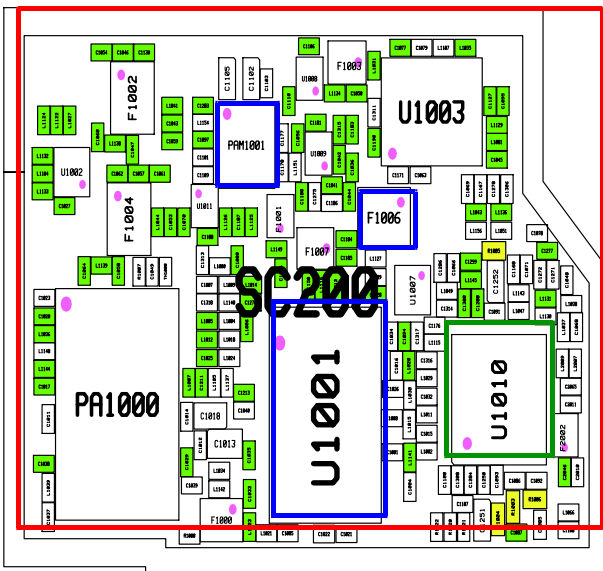
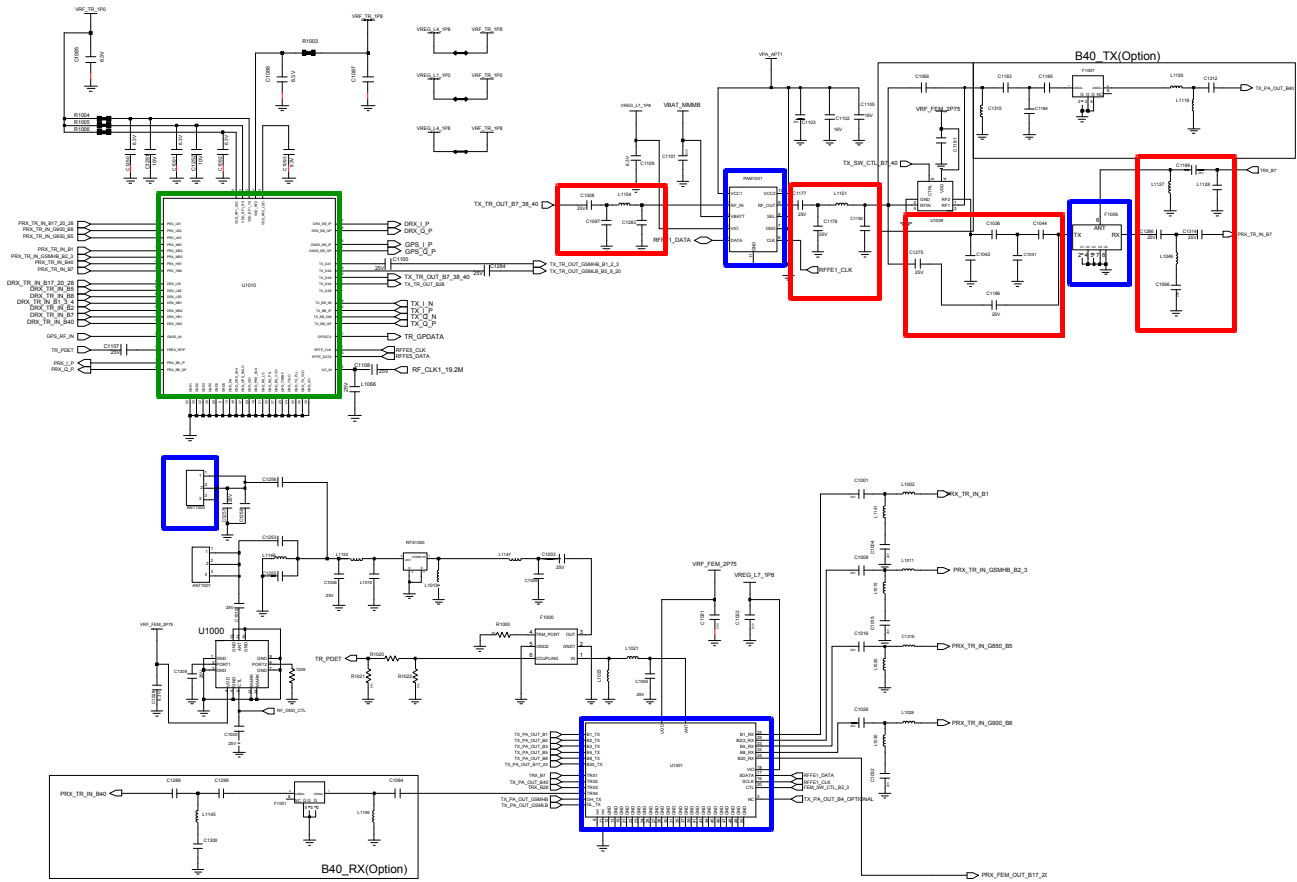




### 8-4-21. LTE B7 TRX







### 8-5. Service Schematics

- NC point(Top view)
- UCP3000(AP)

