

---

## 7. Level 2 Repair

---

### 7-1. Components on the Rear Case




## 7. Level 2 Repair

### 7-2. Pre-requisite

	
<b>Tweezers / Disass'y Stick / Screw Driver</b>	<b>Anti-static Gloves</b>
	
<b>Anti-static Mat</b>	<b>Hot Plate</b>
	
<b>A OCTA Disassembly Holder</b>	<b>OCTA Disassembly Upper</b>
	
<b>Ethyl Alcohol</b>	<b>Cotton Swab</b>

## 7. Level 2 Repair

### 7-3. Parts which must be changed after repair

BOM Description & part code	Image	Remarks
<p>Fingerprint Tape [GH81-16707A]</p>		<p>Whenever re-assemble Fingerprint. Remove old tape and use new tape</p>

## 7. Level 2 Repair

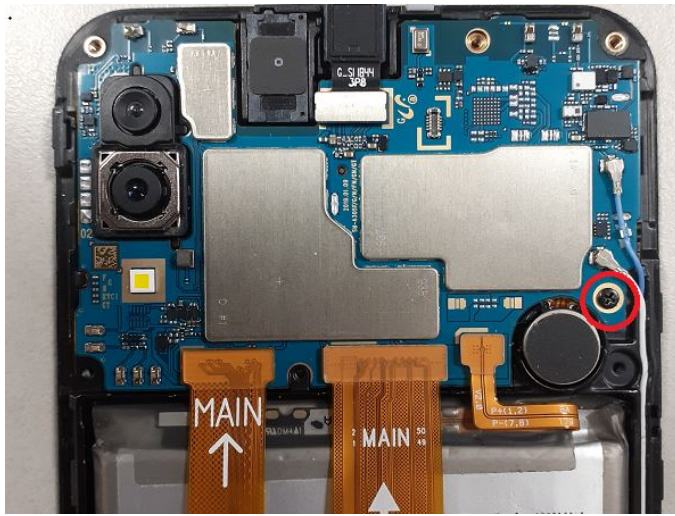
### 7-4. Disassembly

<p><b>1</b> Remove SIM/SD Tray</p> 	<p><b>2</b> Remove Rear Cover SIM/SD area → Upper → Right → Below</p> 
<p>※ <b>Caution</b> Be care of scratch</p>	<p>※ <b>Caution</b> Be care of scratch</p>
<p><b>3</b> Remove Finger print FPCB using tool and detach Finger print</p> 	<p><b>4</b> Remove all 13 points of Rear Screws</p> 
<p>※ <b>Caution</b> 1) Be care of scratch 2) Be care of Rear and Finger print damage</p>	<p>※ <b>Caution</b> Be care of Rear damage</p>

## 7. Level 2 Repair

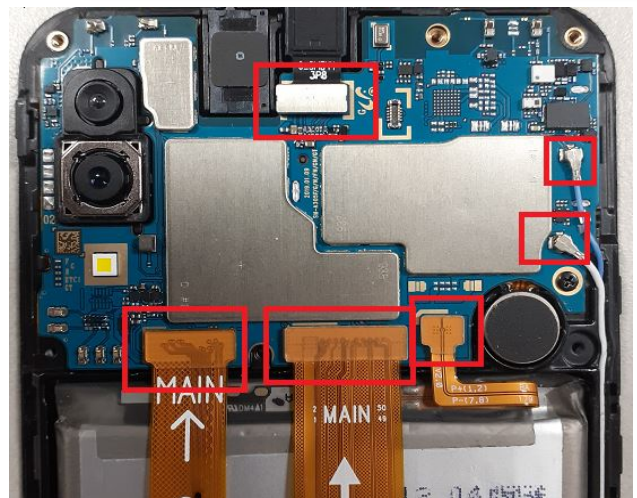
5

Remove 1 PBA screw



6

Remove the PBA and C to C FPCB and Batt Conn and BLACK, WHITE coaxial cable and VT Camera.



※ Caution

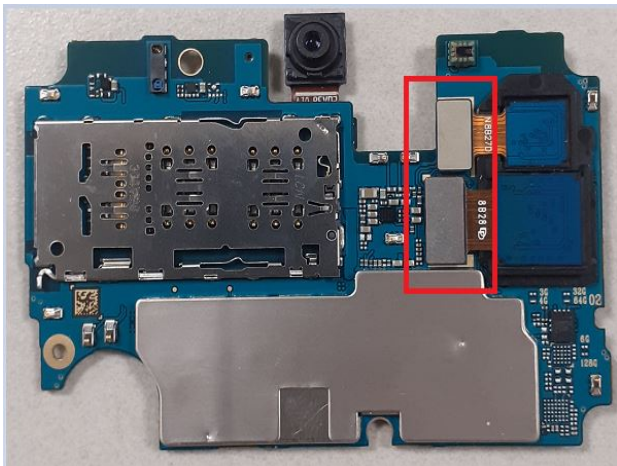
Be careful not to damage the PBA

※ Caution

Be care of several kinds of damage at PBA and FPCB.

7

Remove CAM connectors

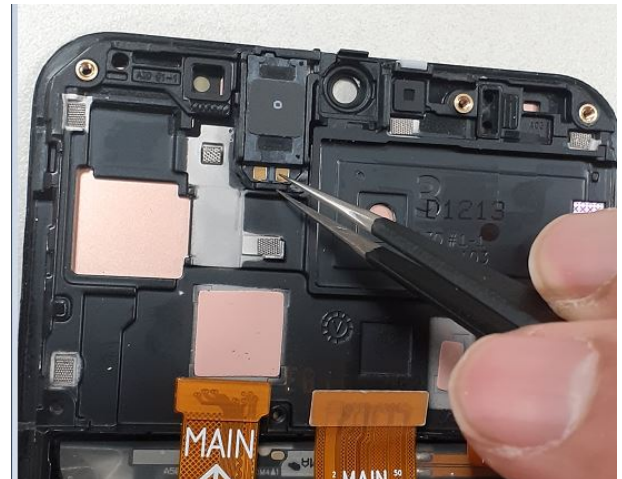


※ Caution

Be careful not to damage the Camera Module

8

Detach RCV from Front Ass'y.



※ Caution

Be careful not to damage the RCV.

Confidential and proprietary-the contents in this service guide subject to change without prior notice

Distribution, transmission, or infringement of any content or data from this document without Samsung's written authorization is strictly prohibited.

## 7. Level 2 Repair

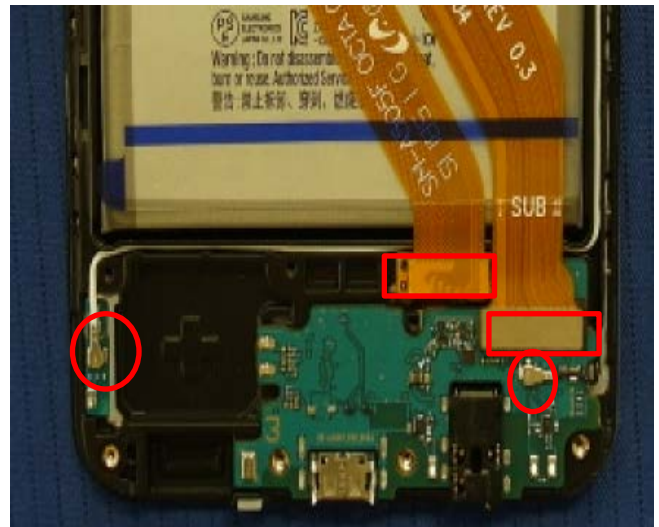
9

Detach Motor from Front Ass'y.



10

Remove C to C FPCB and BLACK, WHITE Coaxial cable.



※ **Caution**

Be careful not to damage the Motor.

※ **Caution**

Be careful not to damage the C to C FPCB and BLACK, WHITE coaxial cable.

11

Detach HB PBA and the Sub PBA.



12

Detach SPK from Rear Ass'y



※ **Caution**

Be careful not to damage HB PBA and the Sub PBA.

※ **Caution**

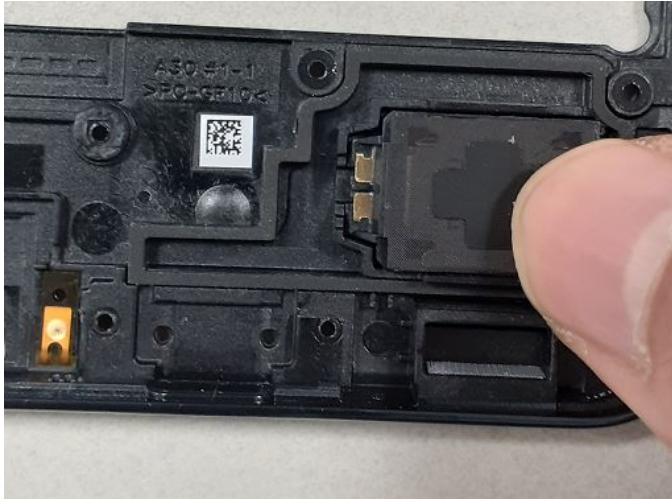
Be careful not to damage the SPK.

## 7. Level 2 Repair

### 7-5. Assembly

1

Attach SPK on Rear Ass'y.



※ **Caution**  
Be care of SPK damage.

2

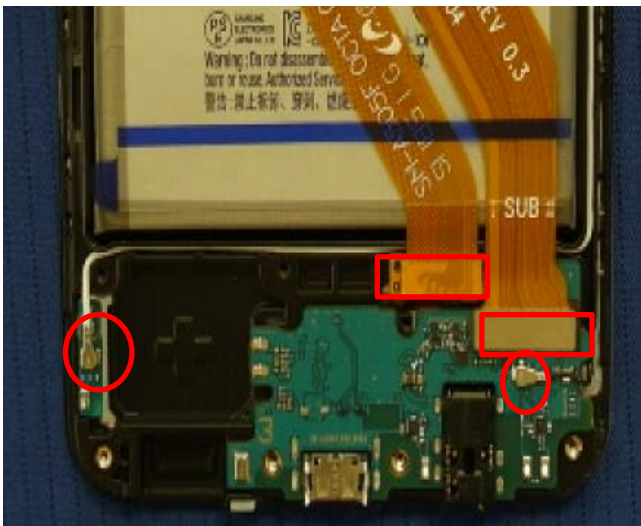
Attach HB PBA and Sub PBA on Front Ass'y.



※ **Caution**  
Be care of Sub PBA damage.

3

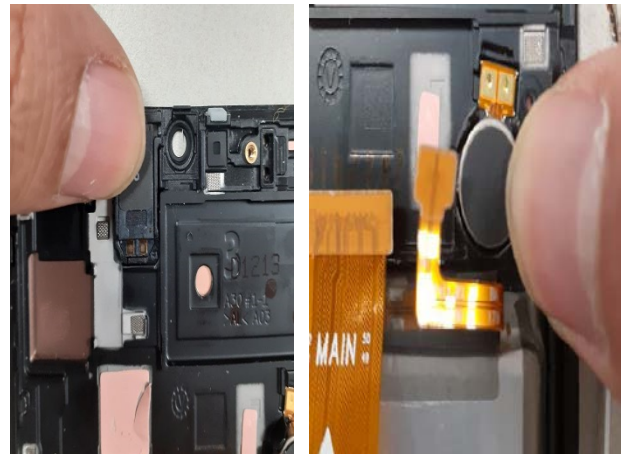
Attach C to C FPCB and BLACK, WHITE coaxial cable.



※ **Caution**  
Please keep the guide line for C to C FPCB and BLACK, WHITE coaxial Cable.

4

Attach Motor and Receiver in upper area

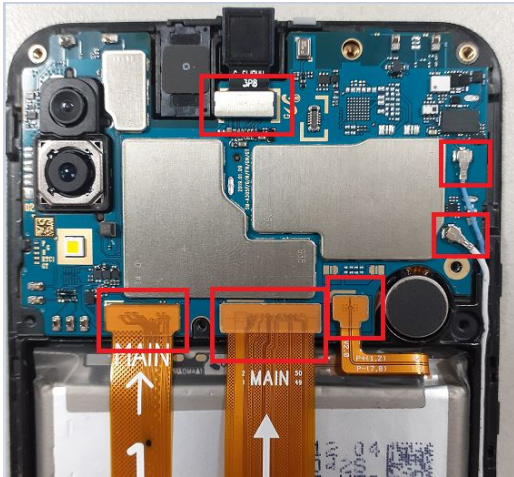


※ **Caution**  
1) Be care of scratch CAM lens  
2) Be care of damage each part.

## 7. Level 2 Repair

5

Assemble the PBA and C to C FPCB and Batt Conn and BLACK, WHITE coaxial cable and VT Camera.



6

Screw insertion 1 Point.  
\* Torque Value :  $1.2 \pm 7\%$



※ Caution

Check for each connector connection

※ Caution

Be care of PBA damage.

7

Assemble Rear and screw insertion 13 point  
\* Torque Value :  $1.2 \pm 7\%$

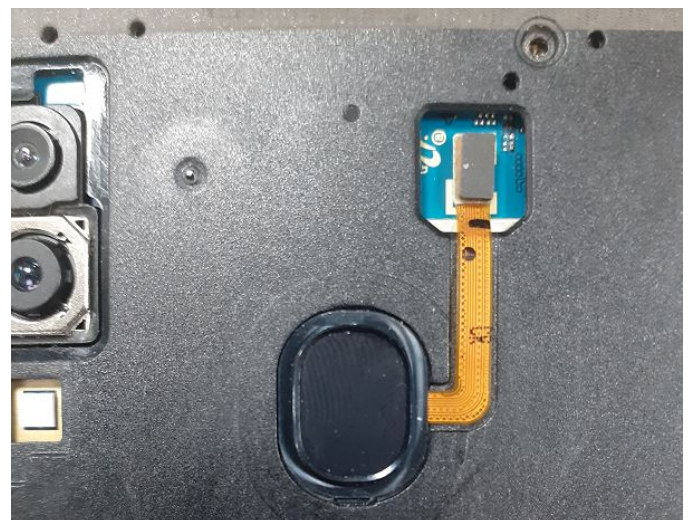


※ Caution

Be care of PBA damage

8

Assemble Finger print module and connect FPCB



※ Caution

Be care of Finger Print FPCB damage.

Confidential and proprietary-the contents in this service guide subject to change without prior notice

Distribution, transmission, or infringement of any content or data from this document without Samsung's written authorization is strictly prohibited.



## 7. Level 2 Repair

9

Assemble cover rear and insert SIM/SD Tray



※ Caution  
Be care of scratch Rear cover