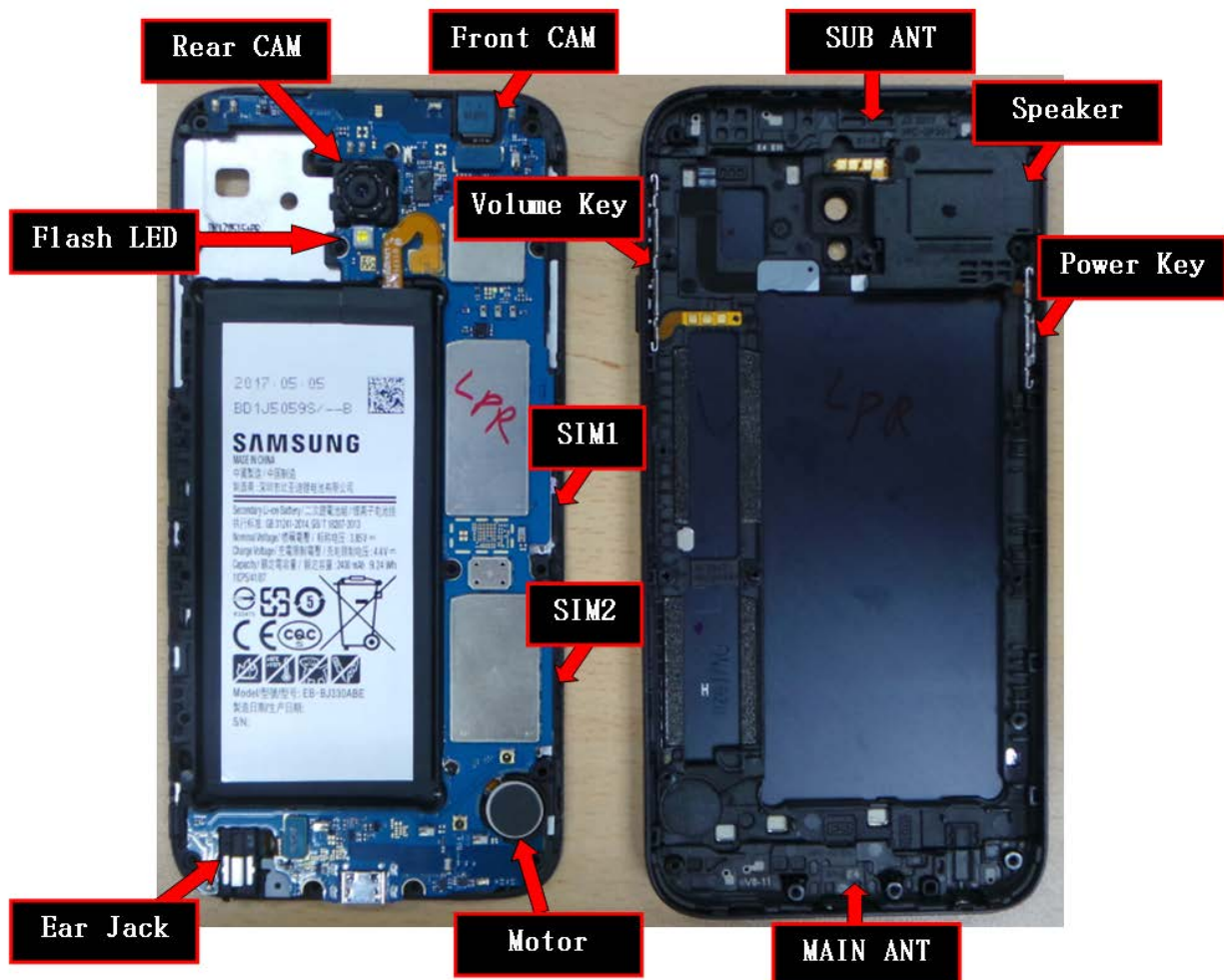


7. Level 2 Repair

7-1. Components on the Rear Case




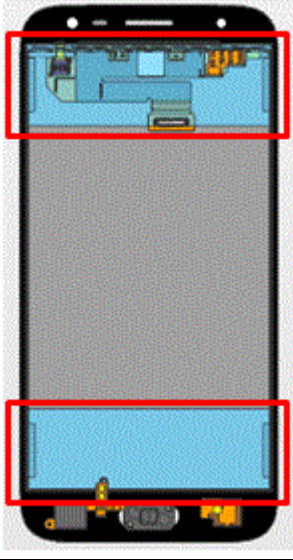
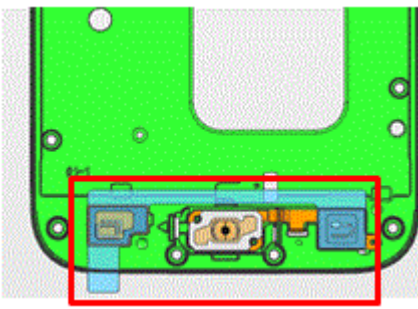
7. Level 2 Repair

7-2. Pre-requisite

| | |
|---|---|
|  |  |
| <p>Tweezers / Disass'y Stick / Screw Driver</p> | <p>Anti-static Gloves</p> |
|  |  |
| <p>Anti-static Mat</p> | <p>Hot Plate</p> |
|  |  |
| <p>A LCD Disassembly Holder</p> | <p>LCD Disassembly Upper</p> |
|  |  |
| <p>Ethyl Alcohol</p> | <p>Cotton Swab</p> |

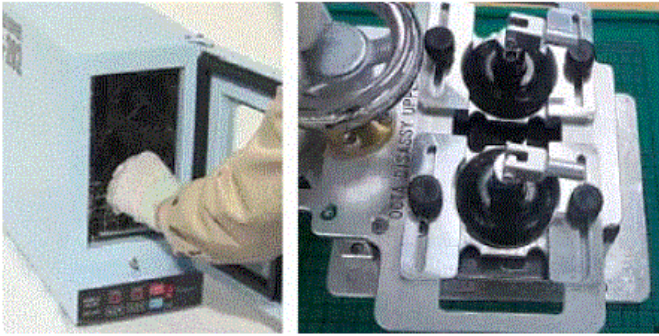
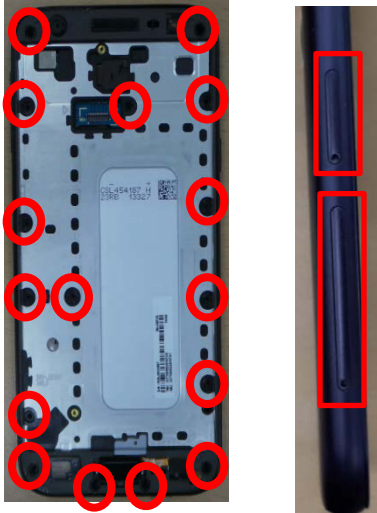


7. Level 2 Repair

7-3. Parts which must be changed after repair

| BOM Description & part code | Image | Remarks |
|---|--|--|
| <p>WINDOW TAPE [GH02-14854A]</p> |  | |
| <p>SIDE Gasket Tape [GH81-14867A]*2EA</p> |  | <p>Whenever the device Is disassembled and reassembled</p> |
| <p>Touch Key Top Tape [GH81-14773A]</p> |  | |

7. Level 2 Repair

7-4. Disassembly

| | |
|---|--|
| <div data-bbox="124 302 762 555" style="border: 1px solid black; padding: 5px;"> <p>1</p> <p>1) Put the device in the chamber as following below heating condition.</p> <ul style="list-style-type: none"> - SOC 68% ↓ : 70℃/10~20min - SOC 68% ↑ : 60℃/10~20min <p>※ Please confirm the heating condition released lastly, and follow it.</p> <p>2) Detach the LCD.</p> </div> <div data-bbox="116 680 777 1014">  </div> | <div data-bbox="837 302 1492 398" style="border: 1px solid black; padding: 5px;"> <p>2</p> <p>Disassemble SIM Tray 1,2 from device. Unscrew 16 Points.</p> </div> <div data-bbox="975 497 1353 1008">  </div> |
| <p>※ Caution</p> <p>1) Be careful not to damage set and LCD.</p> | |
| <div data-bbox="124 1160 762 1227" style="border: 1px solid black; padding: 5px;"> <p>3</p> <p>Disassemble the REAR.</p> </div> <div data-bbox="256 1258 561 1778">  </div> | <div data-bbox="821 1160 1476 1283" style="border: 1px solid black; padding: 5px;"> <p>4</p> <p>Unscrew 2 Points of PBA and disassemble Ear Jack / Battery connector.</p> </div> <div data-bbox="1038 1317 1315 1877">  </div> |
| <p>※ Caution</p> <p>1) Be care of damage to components.</p> | |

7. Level 2 Repair

5

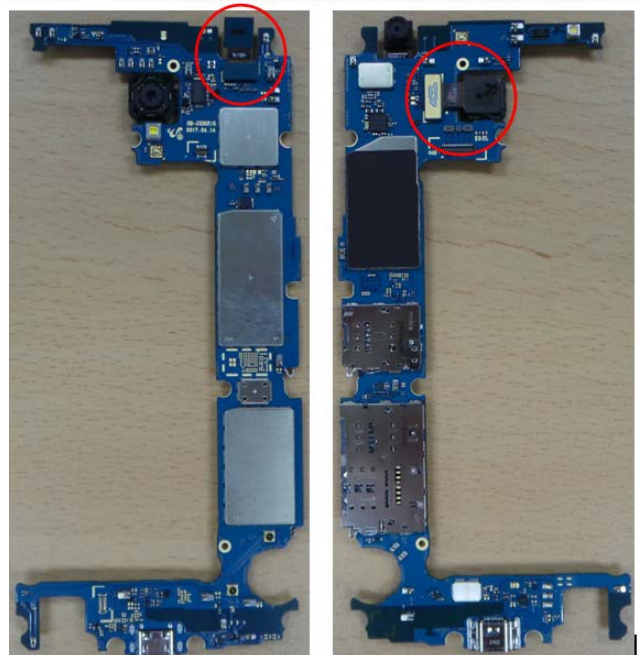
Disassemble PBA / Front.



※ Caution
1) Be care of FPCB damage.

6

Disassemble Front & Rear Camera.

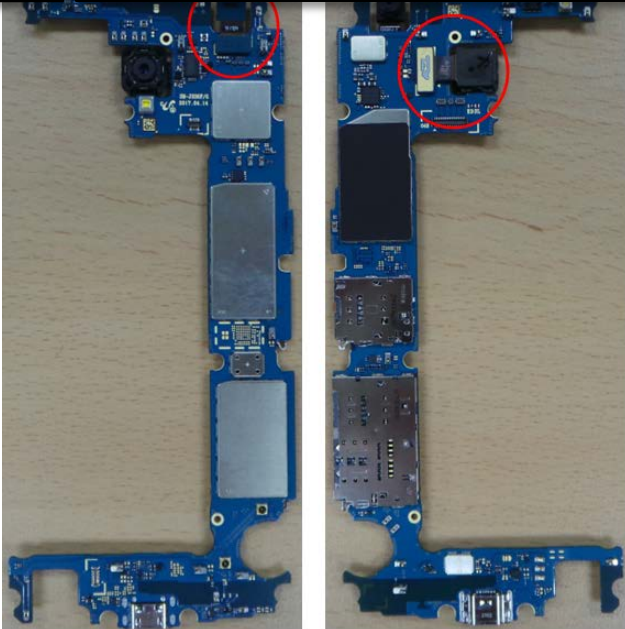


※ Caution

7. Level 2 Repair

7-5. Assembly

1 Assemble Front & Rear Camera.



2 Assemble PBA on Front. Attach Ear Jack and Battery Connector.



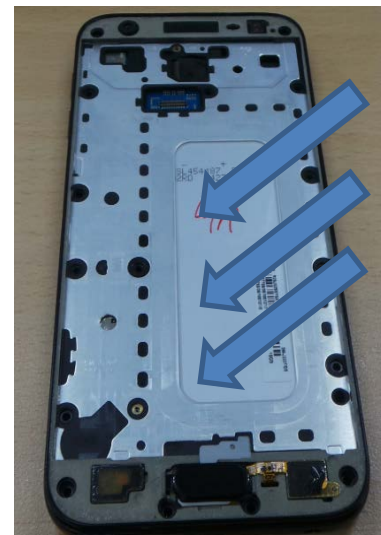
※ **Caution**
1) Be care of FPCB damage.

※ **Caution**
1) Be care of FPCB damage.

3 Screw 2 points of the PBA. Torque : 1.1 Kgf · cm ± 7%, 1.4+2.3



4 Assemble Front Assy on REAR vertically.



※ **Caution**
1) Be careful not to damage the PBA.

※ **Caution**
1) Be careful not to damage PBA.

7. Level 2 Repair

5

Screw 16 points of the Front.
Torque : 1.15 Kgf · cm \pm 7%, 1.6*3.7



6

Replace all non-reusable tapes to the new one, and assemble LCD connector and connector cover and Attach LCD



※ Caution

1) Be care of scratch and molding damage

※ Caution

1) Be careful not to damage the LCD.

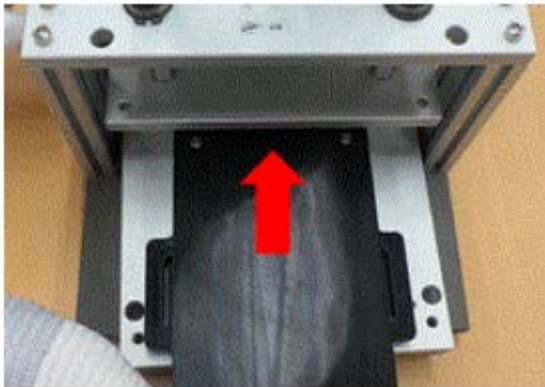
7

Press the device using pressing jig.

- Force : 1N

- Time : 1minute

※ Please confirm the pressing condition released lastly, and follow it.



※ Caution