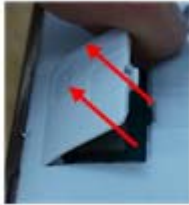


7. Level 2 Repair

7-1. Disassembly

1 Detach LCD connector.



2

1) Put the device in the chamber for 10 minutes under $75 \pm 5^\circ\text{C}$.
2) Detach the LCD using Vaccum Jig.



HOT PLATE $75 \pm 5^\circ\text{C}/5\text{mins}$



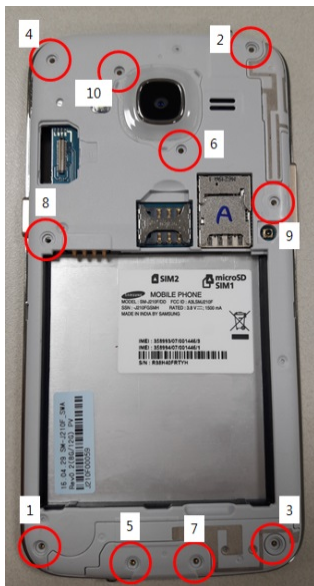
Mobile dryer $75 \pm 5^\circ\text{C}/10\text{mins}$



※ Caution
1) Be careful not to damage OCTA FPCB

※ Caution
1) Be careful not to damage the LCD

3 Unscrew Rear 10 Point.



4 Disassemble the REAR Hook



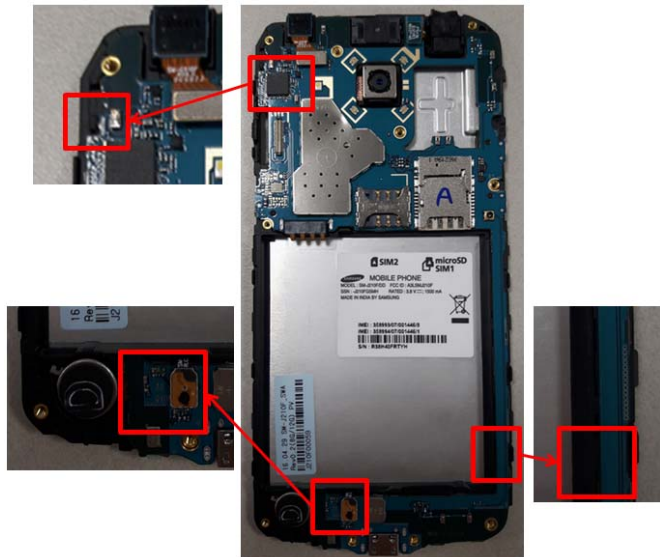
※ Caution
1) Be care of scratch and molding damage

※ Caution
1) Be care of scratch and molding damage

7. Level 2 Repair

5

Disassemble the PBA Hook and Connector



※ **Caution**

1) Be care of PBA damage

6

Disassemble PBA from the bracket.

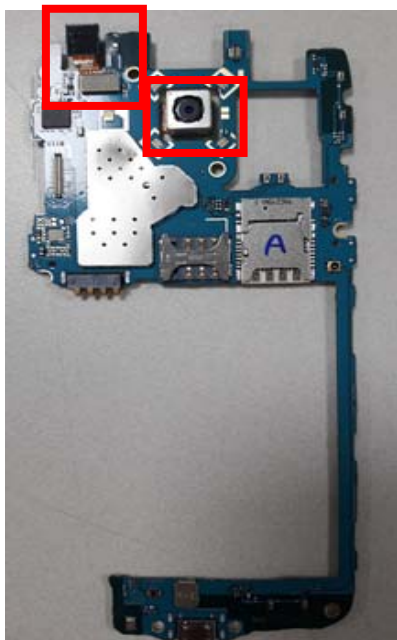


※ **Caution**

1) Be care of PBA damage

7

Disassemble CAM from the PBA.

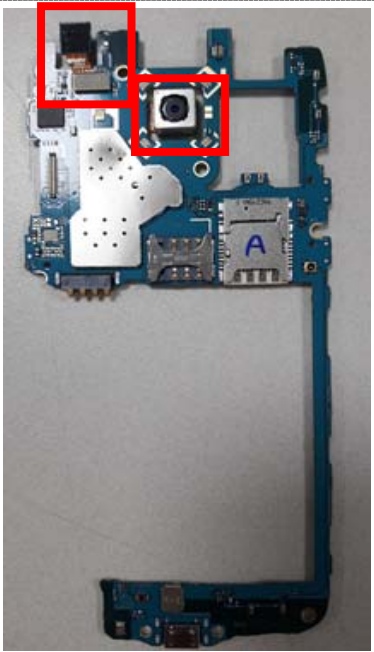
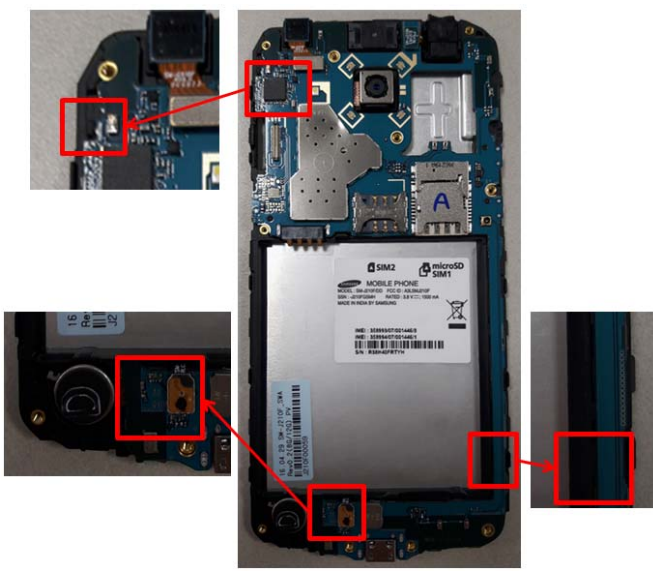

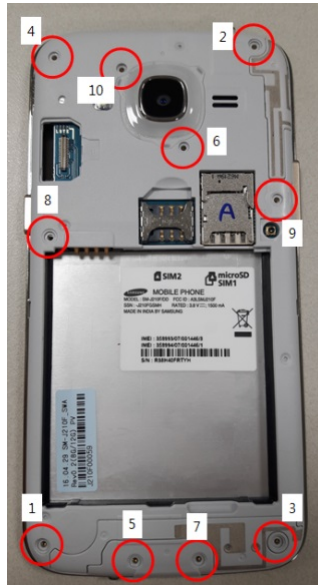


※ **Caution**

1) Be care of PBA damage

7. Level 2 Repair

7-2. Assembly

<div data-bbox="119 324 762 385" style="border: 1px solid black; padding: 5px;"> <p>1 Assemble CAM.</p> </div> 	<div data-bbox="821 324 1471 385" style="border: 1px solid black; padding: 5px;"> <p>2 Assemble PBA to the bracket.</p> </div> 
<p>※ Caution 1) Be care of FPCB connector.</p>	<p>※ Caution 1) Be care of assemble hook.</p>
<div data-bbox="119 1153 762 1214" style="border: 1px solid black; padding: 5px;"> <p>3 Assemble Rear</p> </div> 	<div data-bbox="821 1176 1471 1236" style="border: 1px solid black; padding: 5px;"> <p>4 Screw Rear 10 point.</p> </div> 
<p>※ Caution 1) Be care of scratch and molding damage</p>	<p>※ Caution 1) Screw Torque : 1.2 Kgf · cm</p>

Confidential and proprietary-the contents in this service guide subject to change without prior notice

Distribution, transmission, or infringement of any content or data from this document without Samsung's written authorization is strictly prohibited.

7. Level 2 Repair

5

Assemble LCD on the Rear Assy

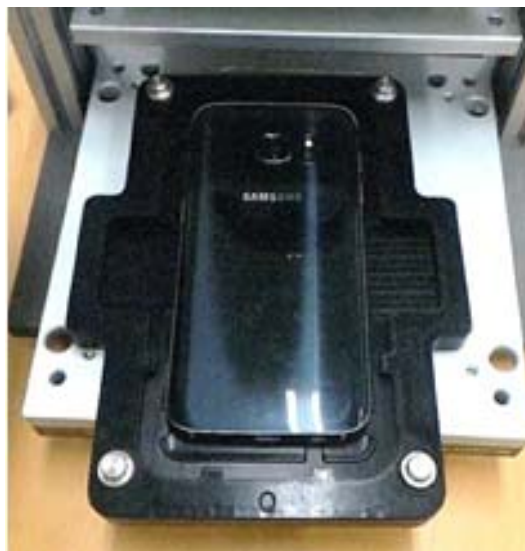


※ **Caution**

1) Be care of scratch and molding damage.

6

Press the set using pressure jig.



※ **Caution**

- Pressure : 1N
- Press time : 1 min

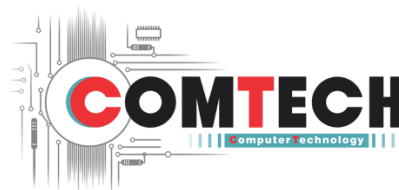
7

Assemble LCD Connector and Cover



※ **Caution**

1) Be care of scratch and molding damage.



tamiraat.com منبع مقاله

Confidential and proprietary-the contents in this service guide subject to change without prior notice

Distribution, transmission, or infringement of any content or data from this document without Samsung's written authorization is strictly prohibited.