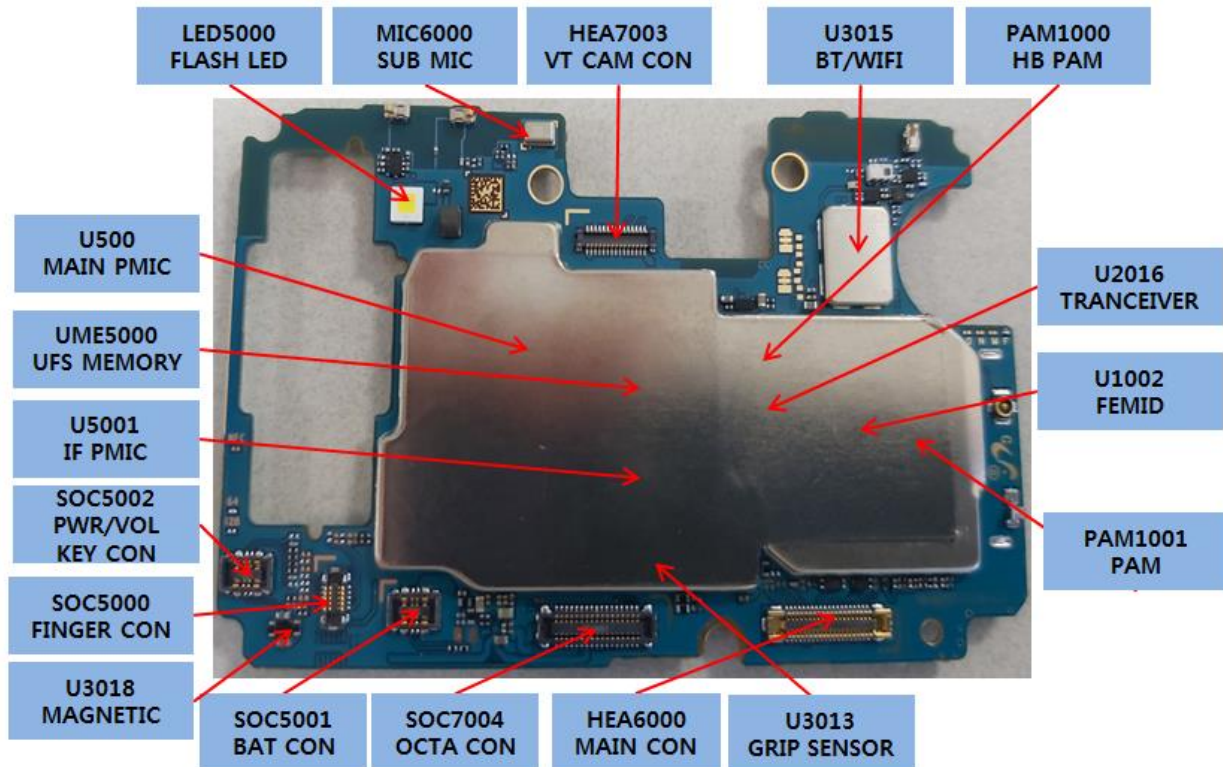


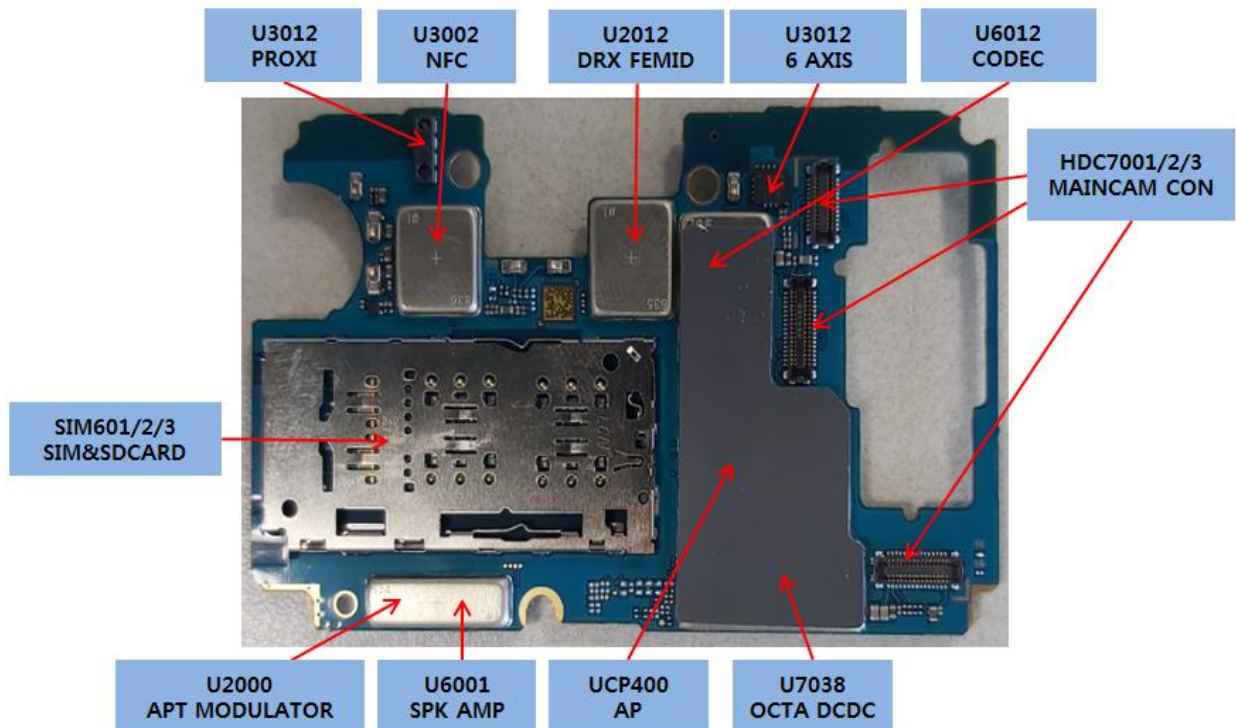
8. Level 3 Repair

8-1. Components Layout

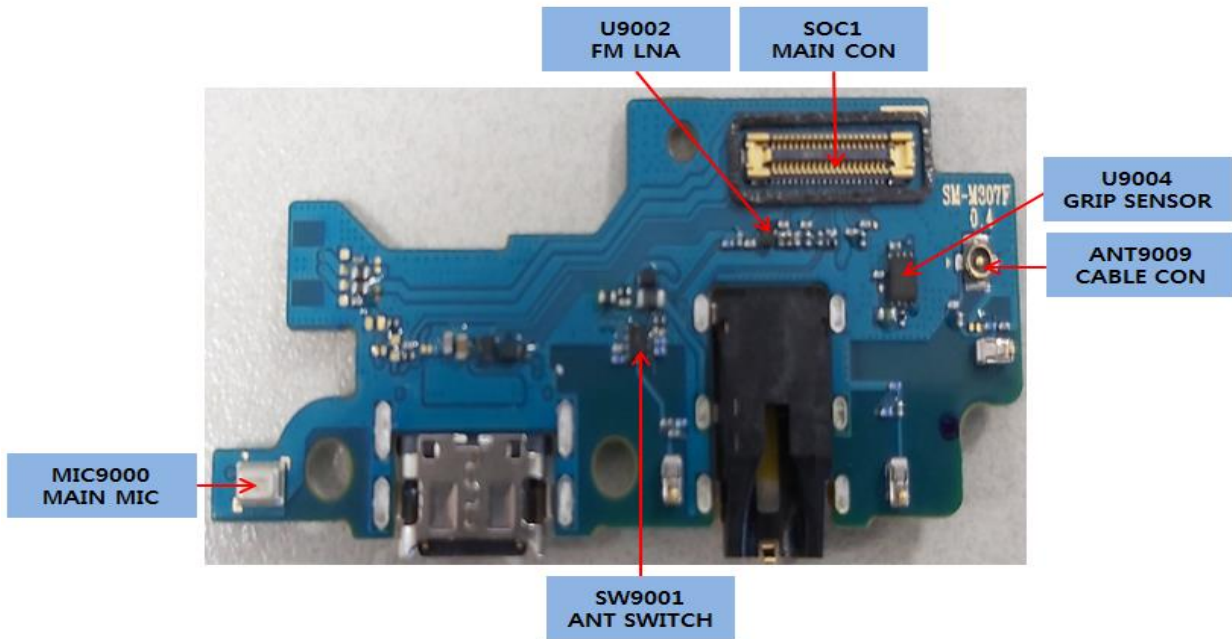
MAIN PBA (TOP SIDE)



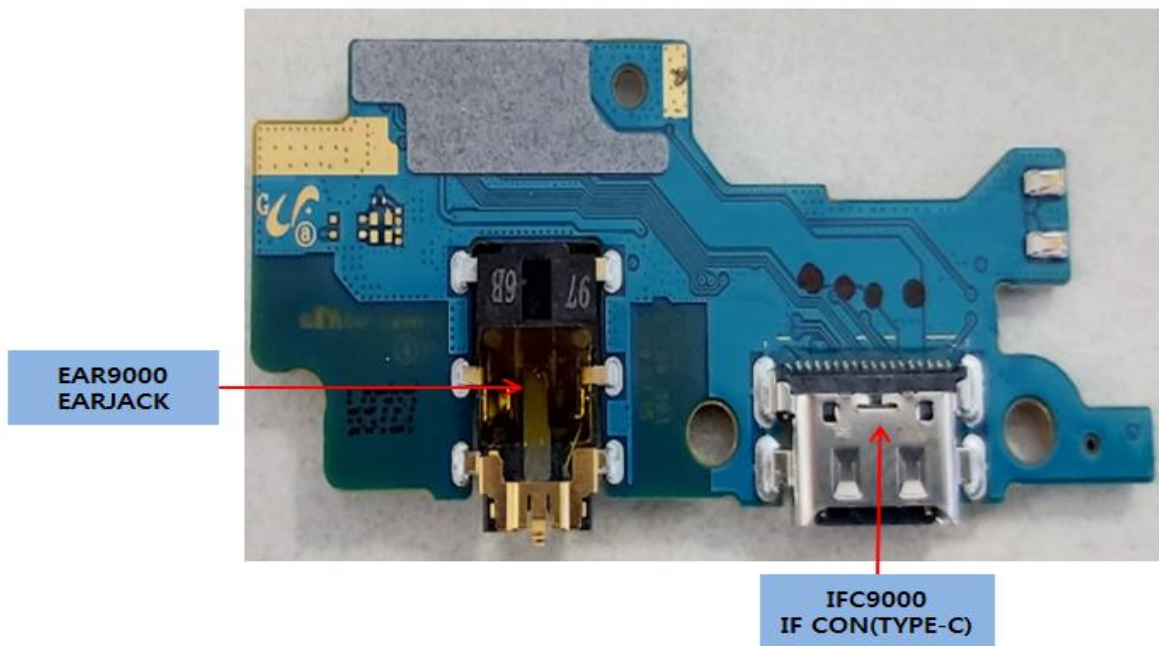
MAIN PBA (BOTTOM SIDE)

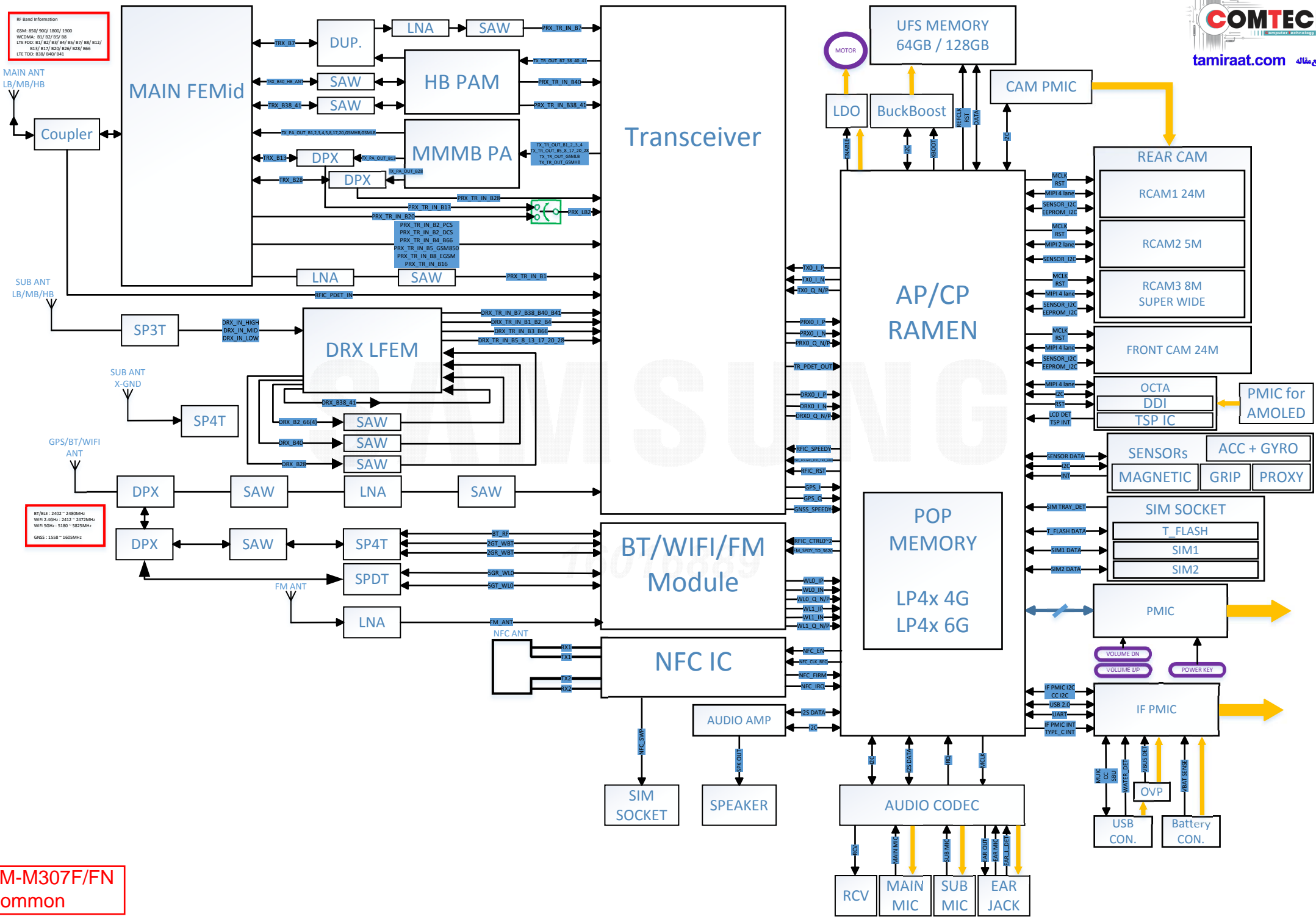


SUB PBA (TOP SIDE)



SUB PBA (BOTTOM SIDE)





RF Band Information
 GSM: 850/ 900/ 1800/ 1900
 WCDMA: B1/ B2/ B3/ B5
 LTE FDD: B1/ B2/ B3/ B4/ B5/ B7/ B8/ B12/
 B13/ B17/ B20/ B26/ B28/ B66
 LTE TDD: B36/ B40/ B41

MAIN ANT
 LB/MB/HB

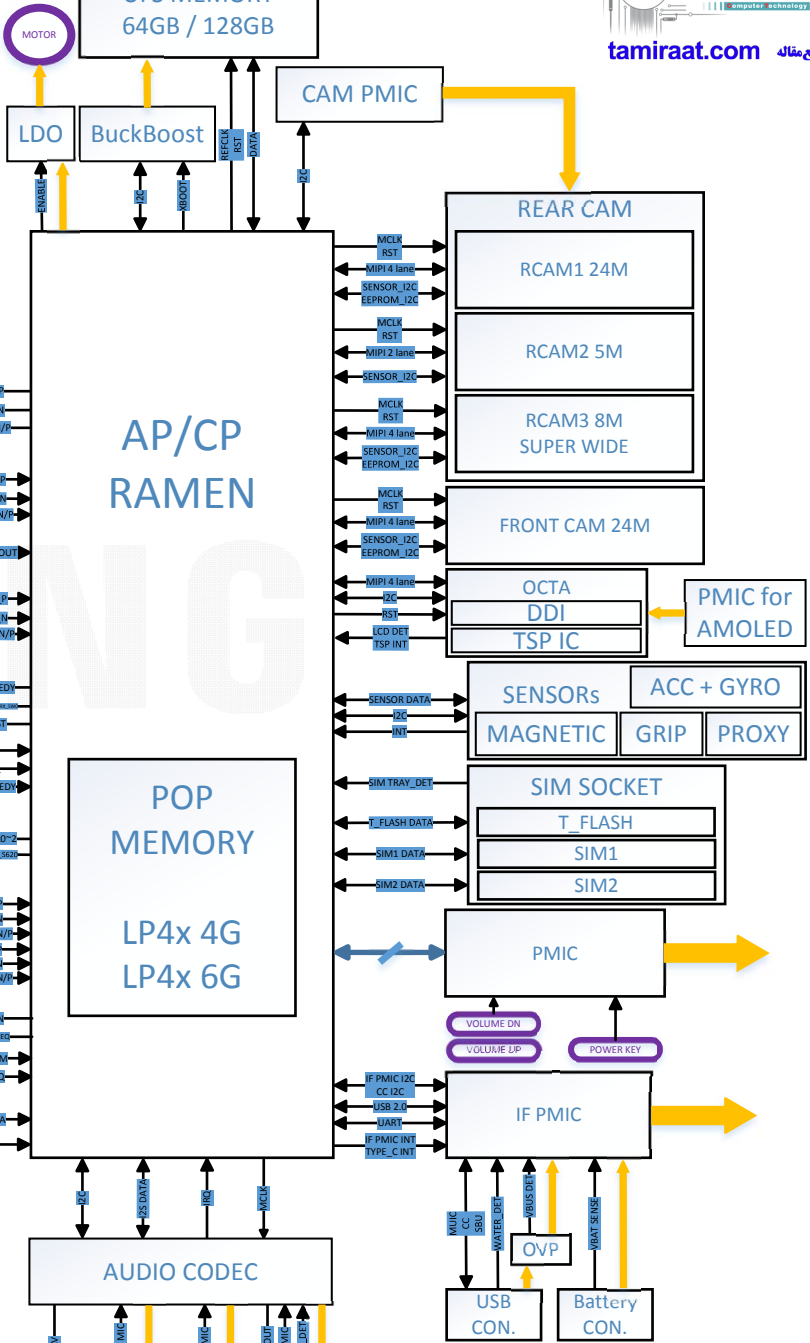
SUB ANT
 LB/MB/HB

SUB ANT
 X-GND

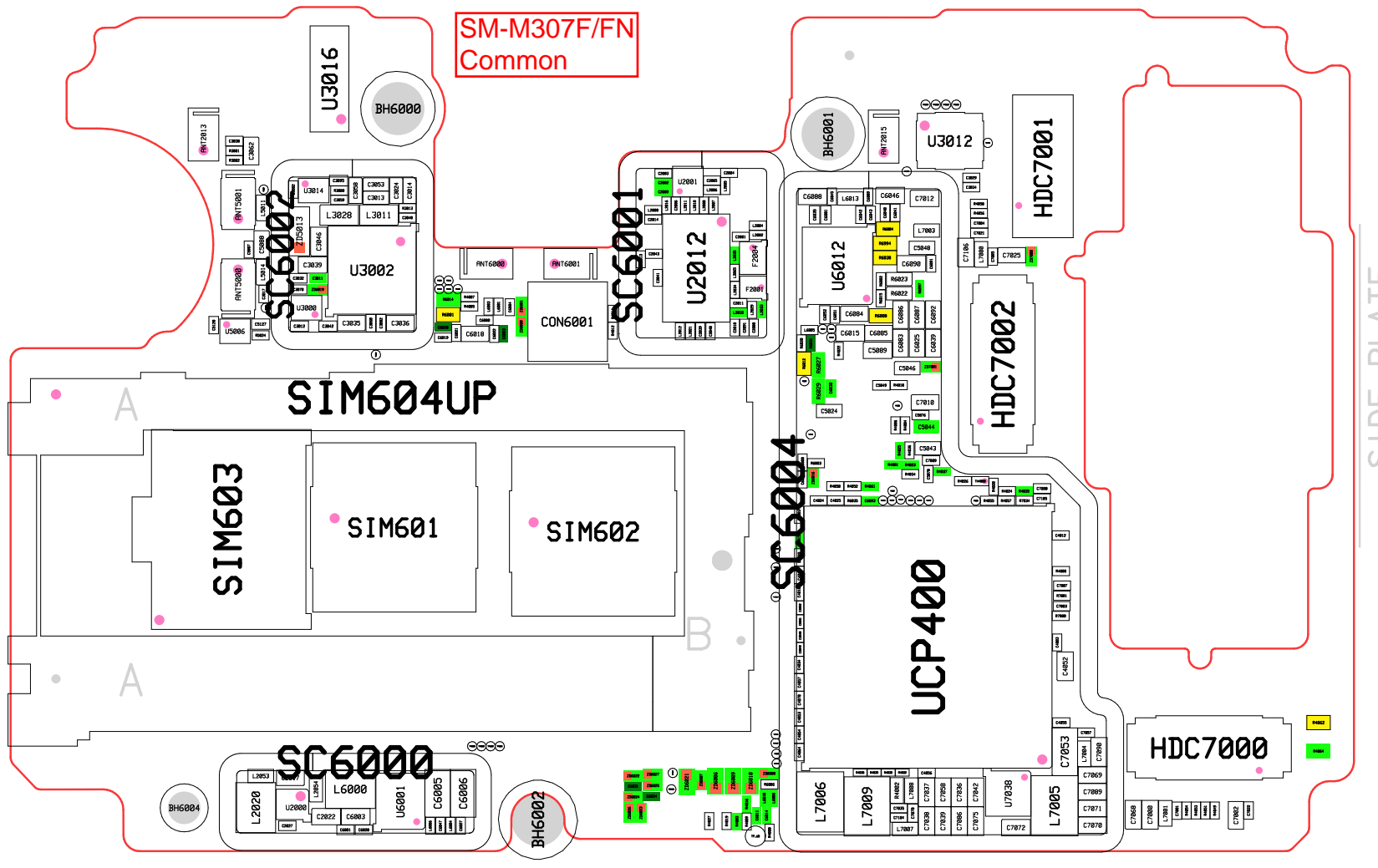
GPS/BT/WIFI
 ANT

BT/BLE : 2402 ~ 2480MHz
 WiFi 2.4GHz : 2412 ~ 2472MHz
 WiFi 5GHz : 5180 ~ 5825MHz
 GNSS : 1558 ~ 1605MHz

SM-M307F/FN
 Common



SM-M307F/FN
Common



U3016

BH6000

SC6007

U3002

CON6001

SC6001

U2012

BH6001

U3012

HDC7001

SIM604UP

SIM603

SIM601

SIM602

SC6004

UCP400

HDC7002

BH6004

SC6000

BH6002

HDC7000

SIDE PLATE

SM-M307F/FN
Common

SC6006

HEA7003

SC6005

SC6003

UME5000

U5000

U1002

PAM1000

PAM1001

SOC7004

HEA6000

HEA4000

SOC5002

SOC5000

SOC5001

C7800

L5020

U5001

U5003

L5012

L5005

L5008

L5000

C7834

OSC2000

C7819

C7814

C7813

C7809

C7807

C7806

C7805

C7804

C7801

C7820

C7824

C7823

C7819

C7814

C7813

C7809

C7807

C7806

C7805

C7804

C7820

C7824

C7823

C7819

C7814

C7813

C7809

C7807

C7806

C7805

C7804

C7820

C7824

C7823

C7819

C7814

C7813

C7809

C7807

C7806

C7805

C7804

C7820

C7824

C7823

C7819

C7814

C7813

C7809

C7807

C7806

C7805

C7804

C7820

C7824

C7823

C7819

C7814

C7813

C7809

C7807

C7806

C7805

C7804

C7820

C7824

C7823

C7819

C7814

C7813

C7809

C7807

C7806

C7805

C7804

C7820

C7824

C7823

C7819

C7814

C7813

C7809

C7807

C7806

C7805

C7804

C7820

C7824

C7823

C7819

C7814

C7813

C7809

C7807

C7806

C7805

C7804

C7820

C7824

C7823

C7819

C7814

C7813

C7809

C7807

C7806

C7805

C7804

C7820

C7824

C7823

C7819

C7814

C7813

C7809

C7807

C7806

C7805

C7804

C7820

C7824

C7823

C7819

C7814

C7813

C7809

C7807

C7806

C7805

C7804

C7820

C7824

C7823

C7819

C7814

C7813

C7809

C7807

C7806

C7805

C7804

C7820

C7824

C7823

C7819

C7814

C7813

C7809

C7807

C7806

C7805

C7804

C7820

C7824

C7823

C7819

C7814

C7813

C7809

C7807

C7806

C7805

C7804

C7820

C7824

C7823

C7819

C7814

C7813

C7809

C7807

C7806

C7805

C7804

C7820

C7824

C7823

C7819

C7814

C7813

C7809

C7807

C7806

C7805

C7804

C7820

C7824

C7823

C7819

C7814

C7813

C7809

C7807

C7806

C7805

C7804

C7820

C7824

C7823

C7819

C7814

C7813

C7809

C7807

C7806

C7805

C7804

C7820

C7824

C7823

C7819

C7814

C7813

C7809

C7807

C7806

C7805

C7804

C7820

C7824

C7823

C7819

C7814

C7813

C7809

C7807

C7806

C7805

C7804

C7820

C7824

C7823

C7819

C7814

C7813

C7809

C7807

C7806

C7805

C7804

C7820

C7824

C7823

C7819

C7814

C7813

C7809

C7807

C7806

C7805

C7804

C7820

C7824

C7823

C7819

C7814

C7813

C7809

C7807

C7806

C7805

C7804

C7820

C7824

C7823

C7819

C7814

C7813

C7809

C7807

C7806

C7805

C7804

C7820

C7824

C7823

C7819

C7814

C7813

C7809

C7807

C7806

C7805

C7804

C7820

C7824

C7823

C7819

C7814

C7813

C7809

C7807

C7806

C7805

C7804

C7820

C7824

C7823

C7819

C7814

C7813

C7809

C7807

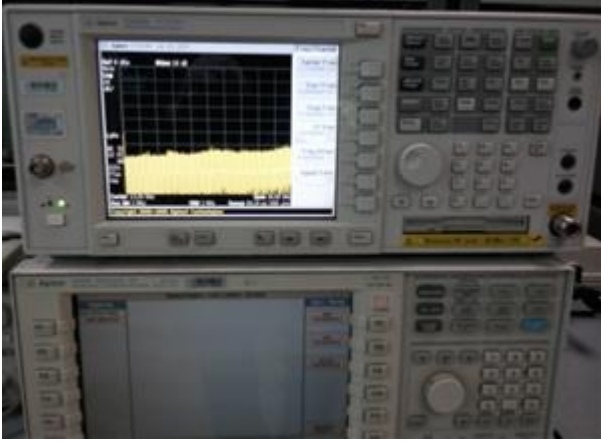

C7806

C7805

C7

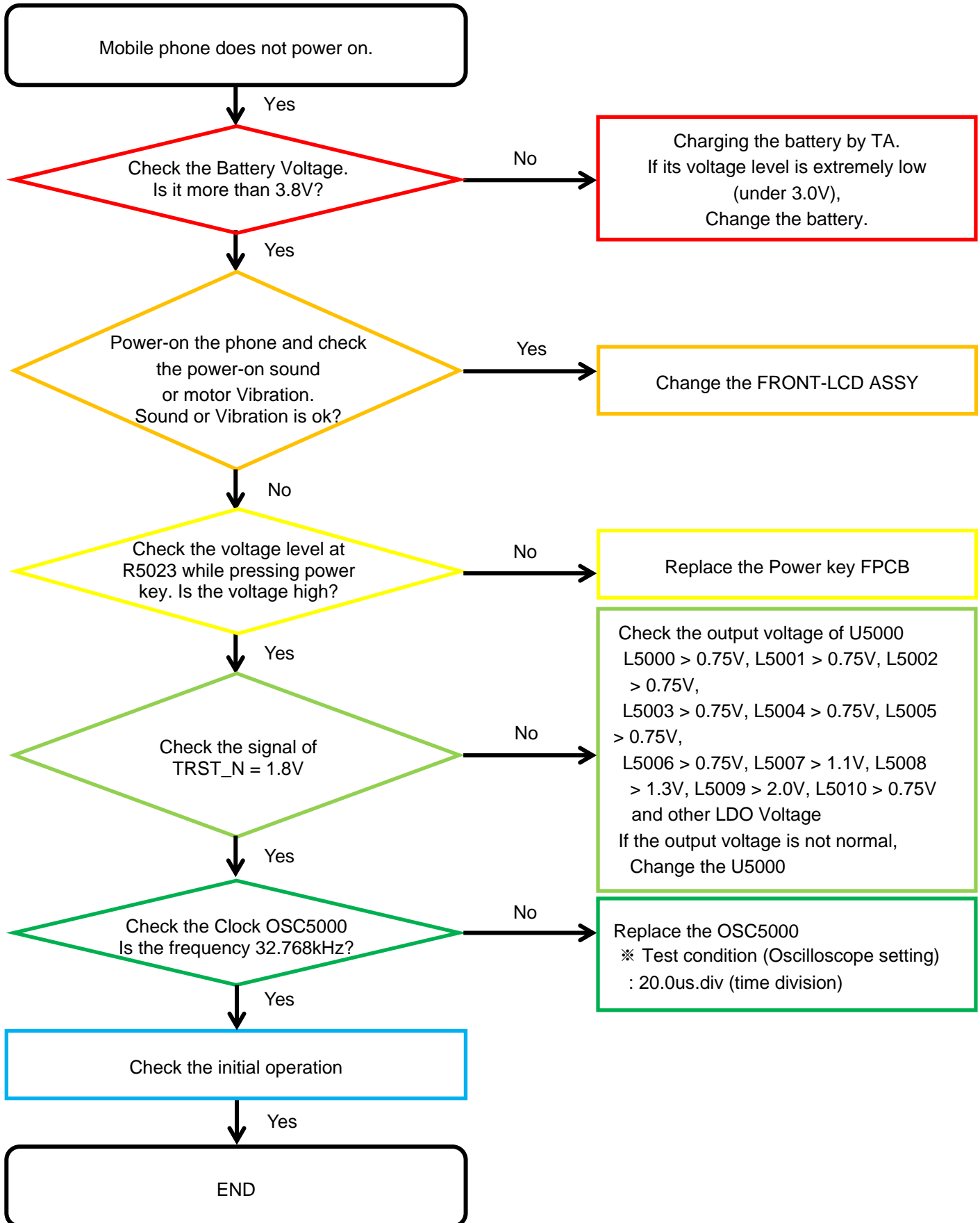
8. Level 3 Repair

8-3. Flow chart of Troubleshooting.

	
<p style="text-align: center;">Oscilloscope</p>	<p style="text-align: center;">Digital Multimeter</p>
	
<p style="text-align: center;">Power Supply</p>	<p style="text-align: center;">+ driver, ESD Safe Tweezer</p>
	
<p style="text-align: center;">8960 & Spectrum Analyzer</p>	<p style="text-align: center;">Soldering iron</p>

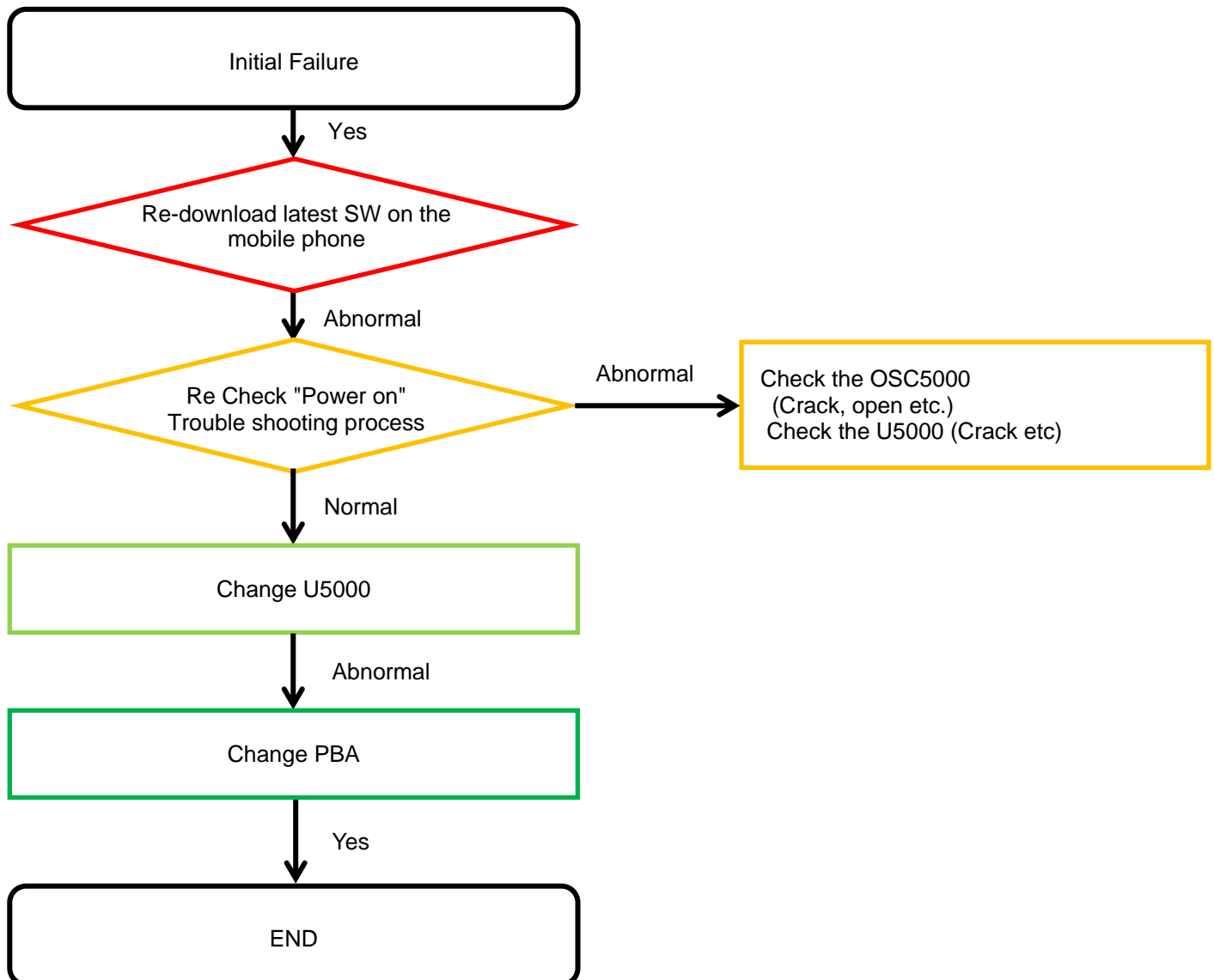
8. Level 3 Repair

8-4-1. Power On



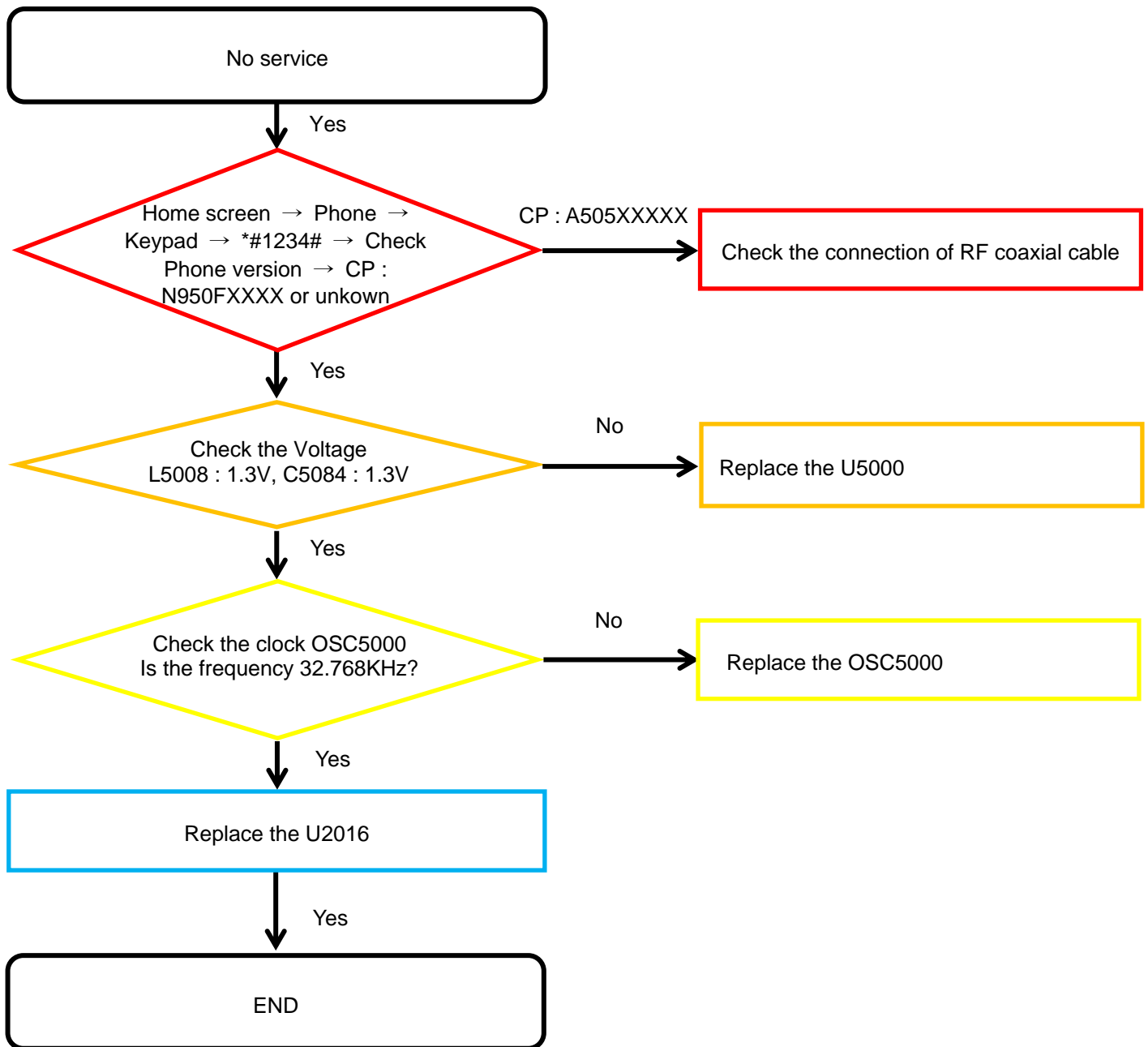
8. Level 3 Repair

8-4-2. Initial



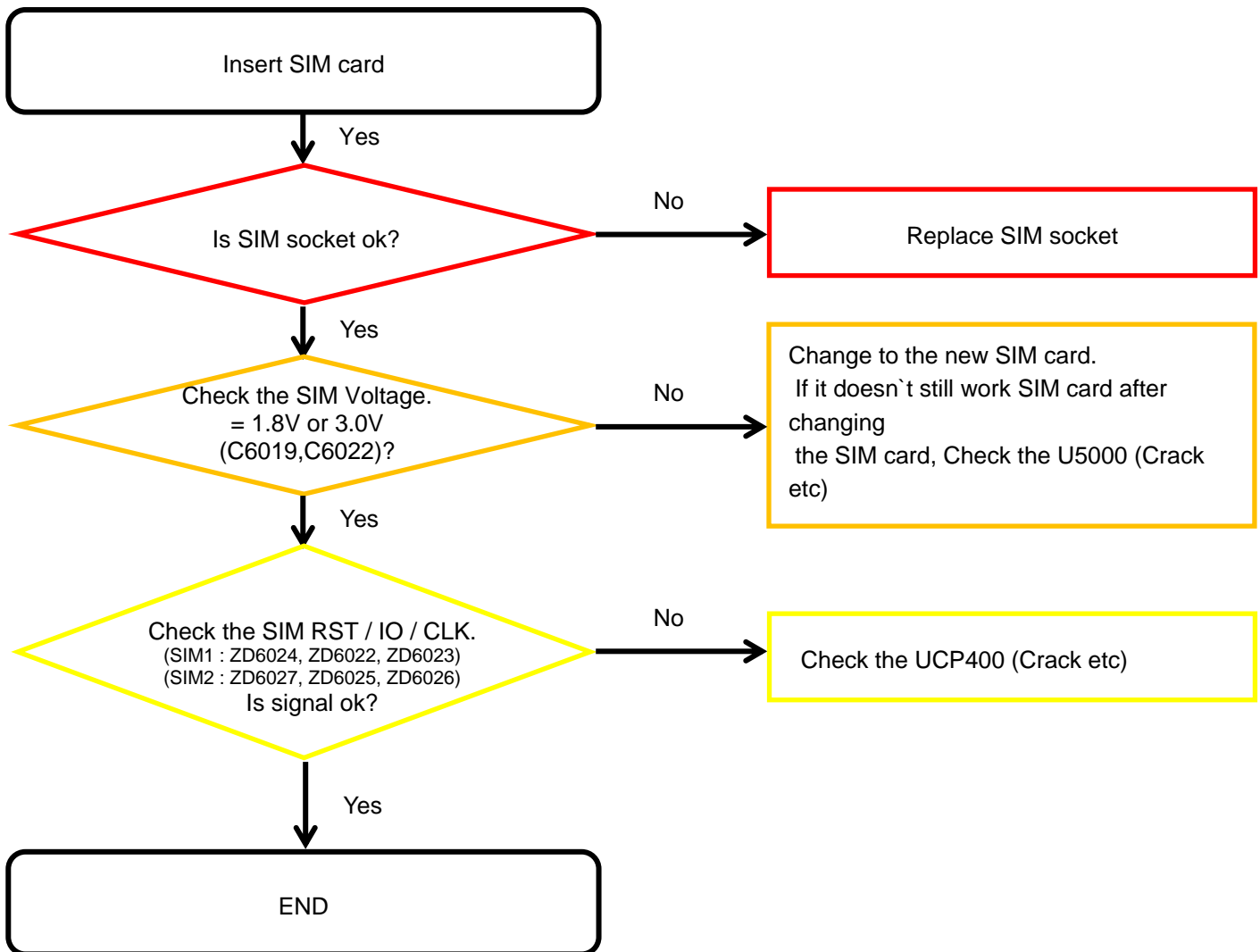
8. Level 3 Repair

8-4-3. No Service



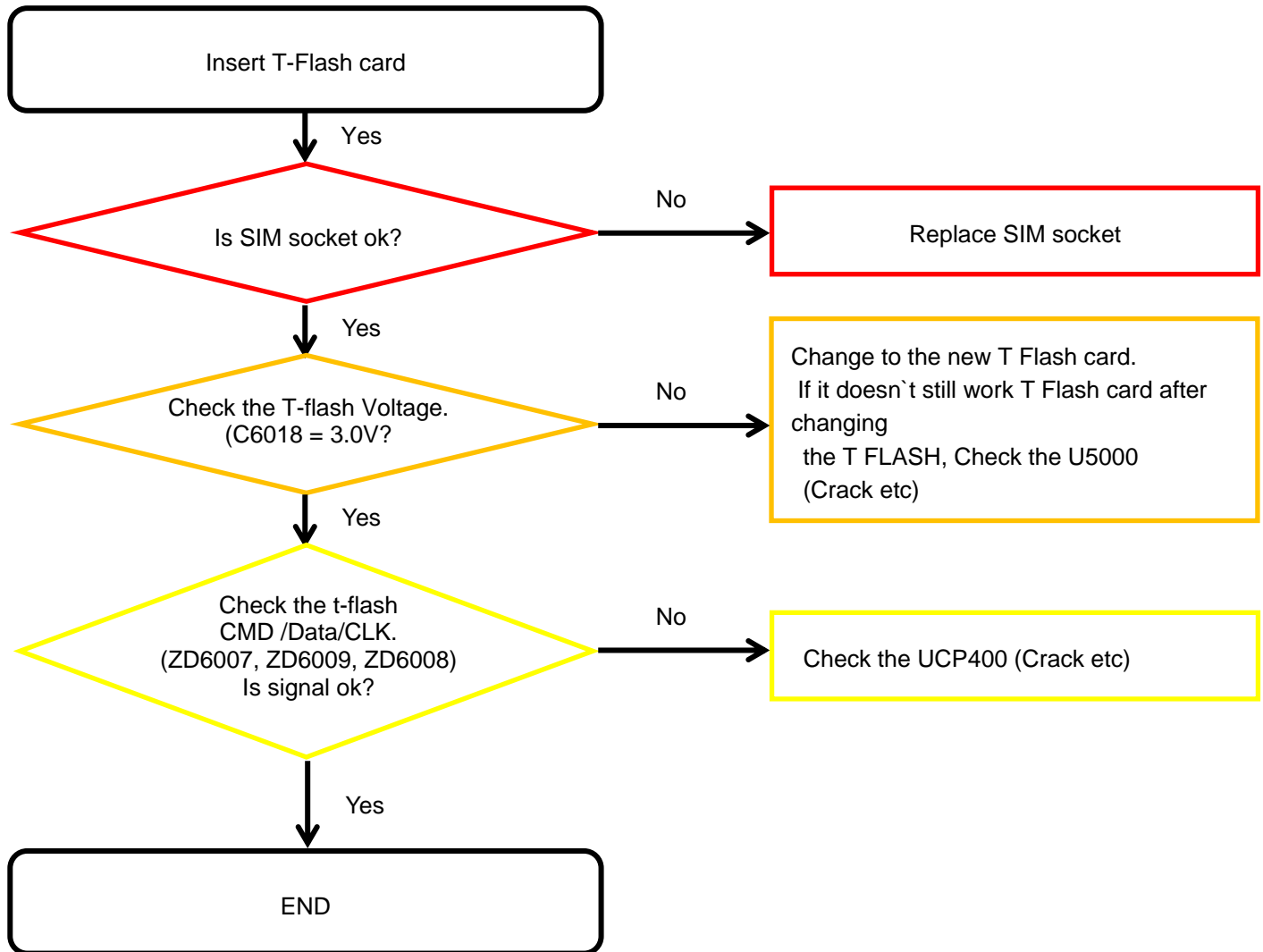
8. Level 3 Repair

8-4-4. SIM Part



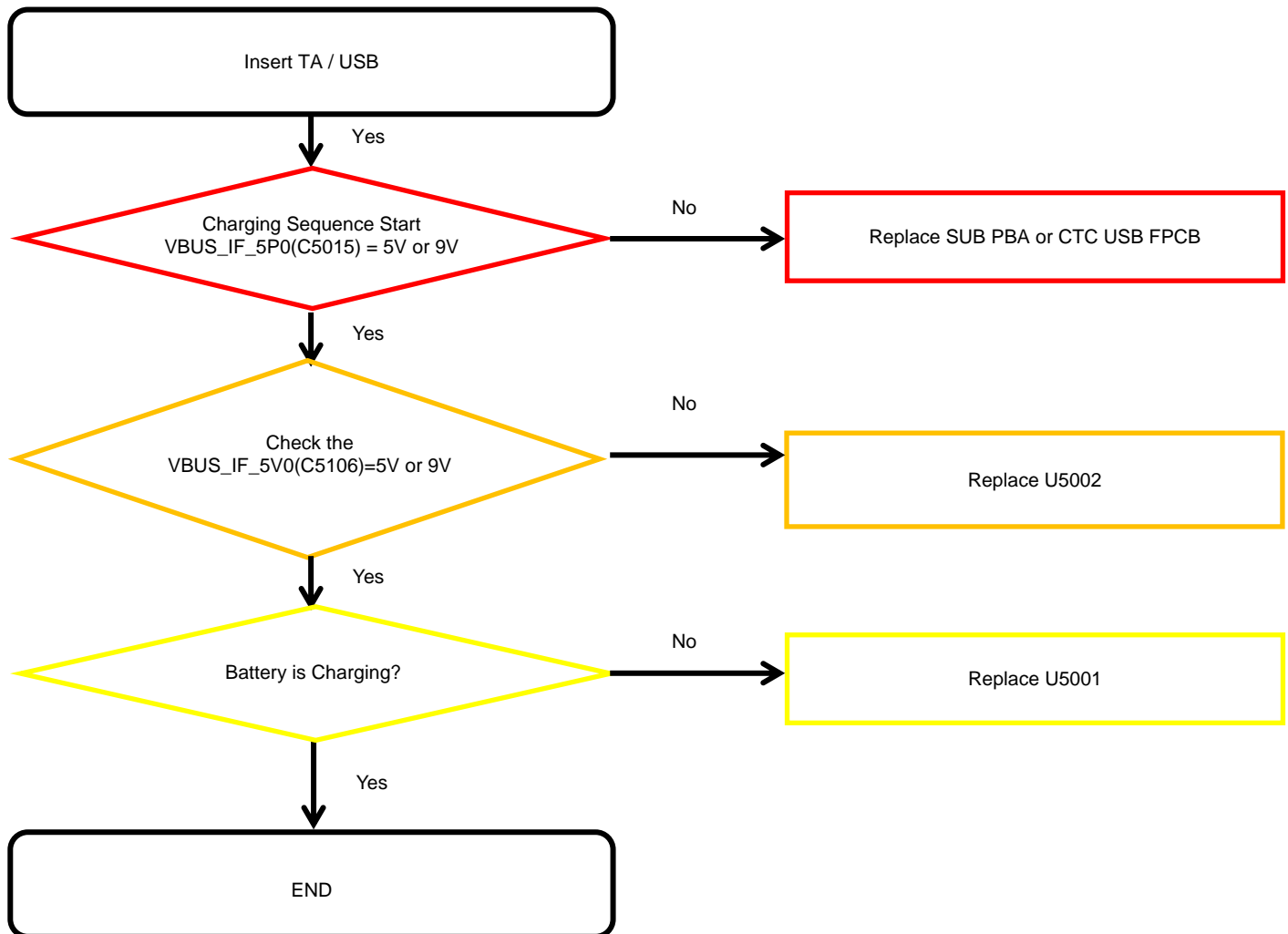
8. Level 3 Repair

8-4-5. T-Flash Part



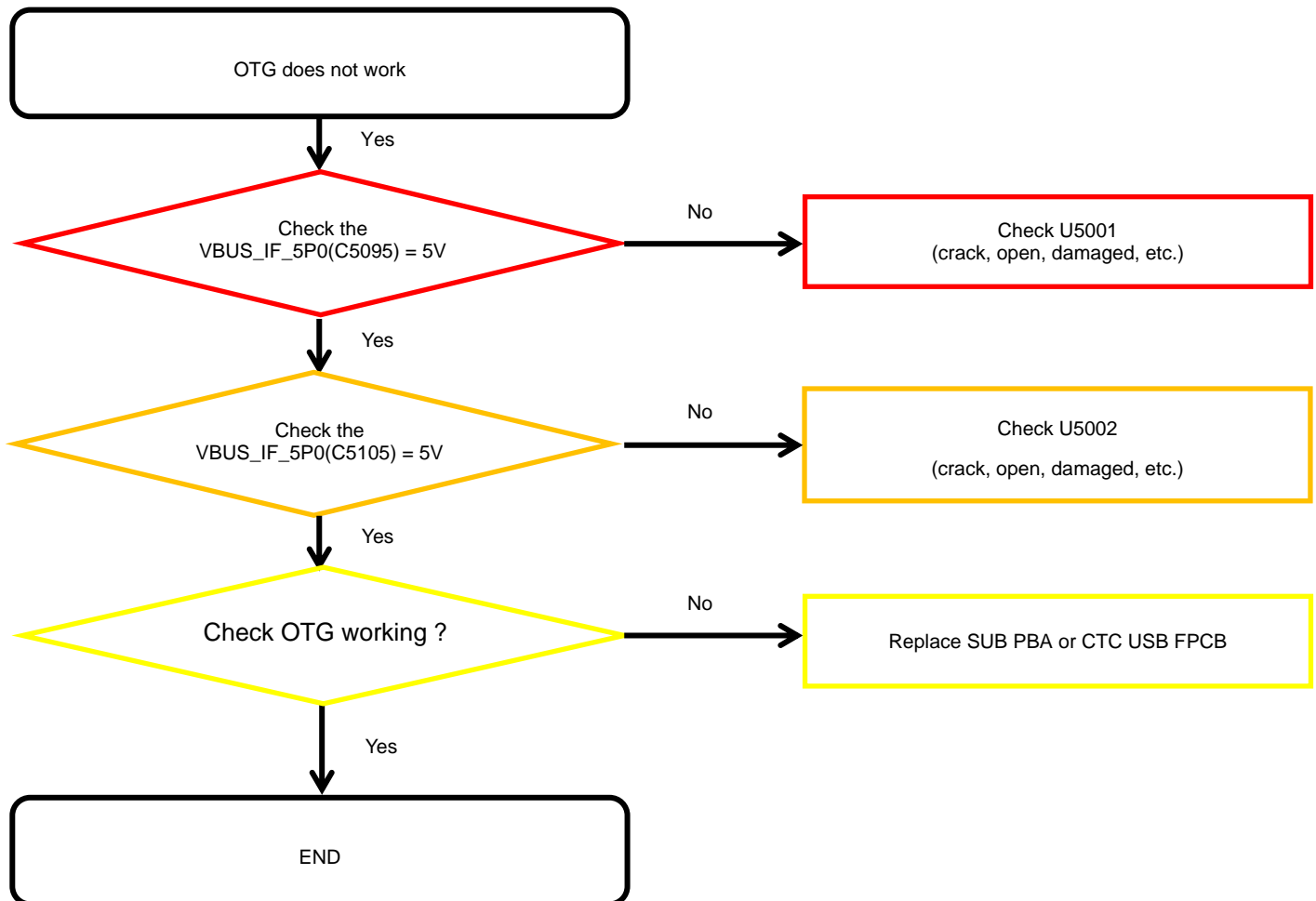
8. Level 3 Repair

8-4-6. Cable Charging Part



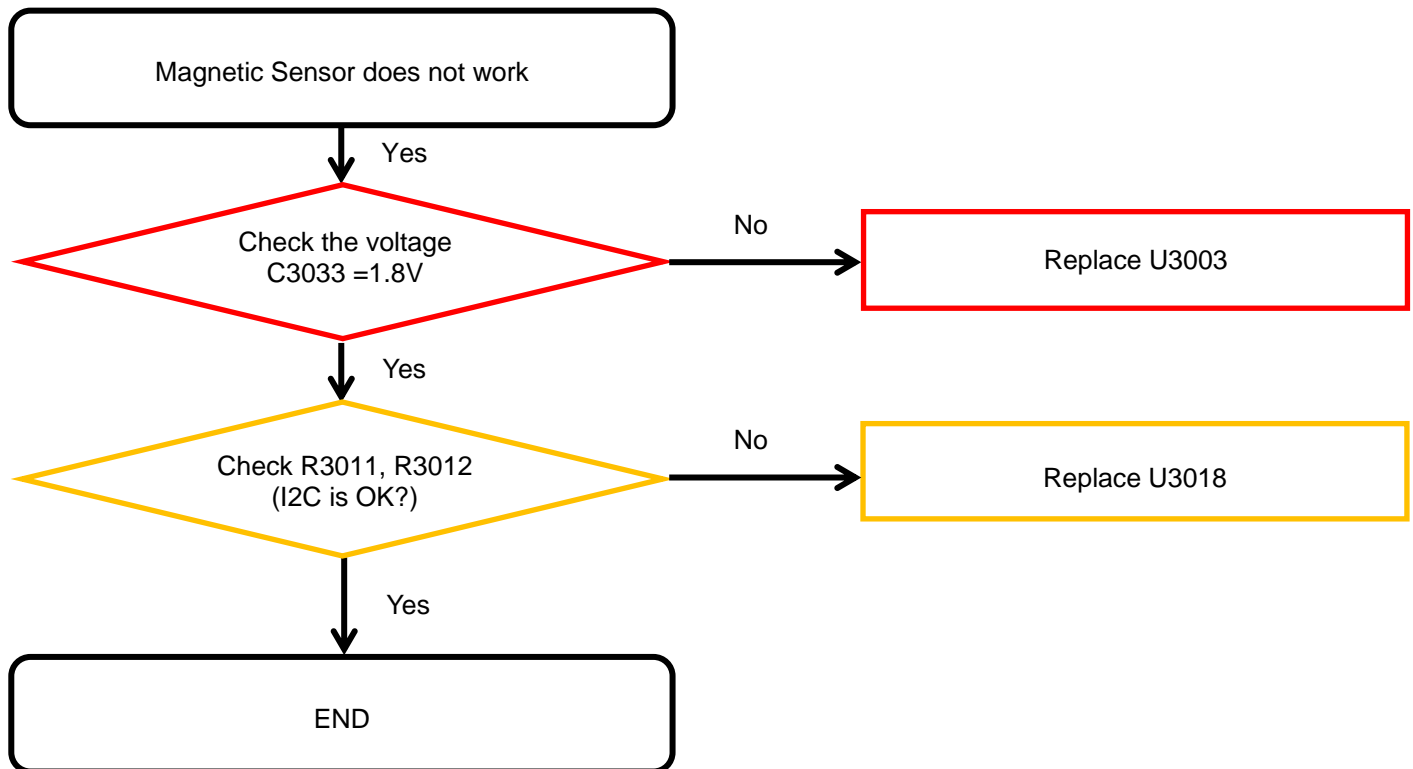
8. Level 3 Repair

8-4-7. OTG



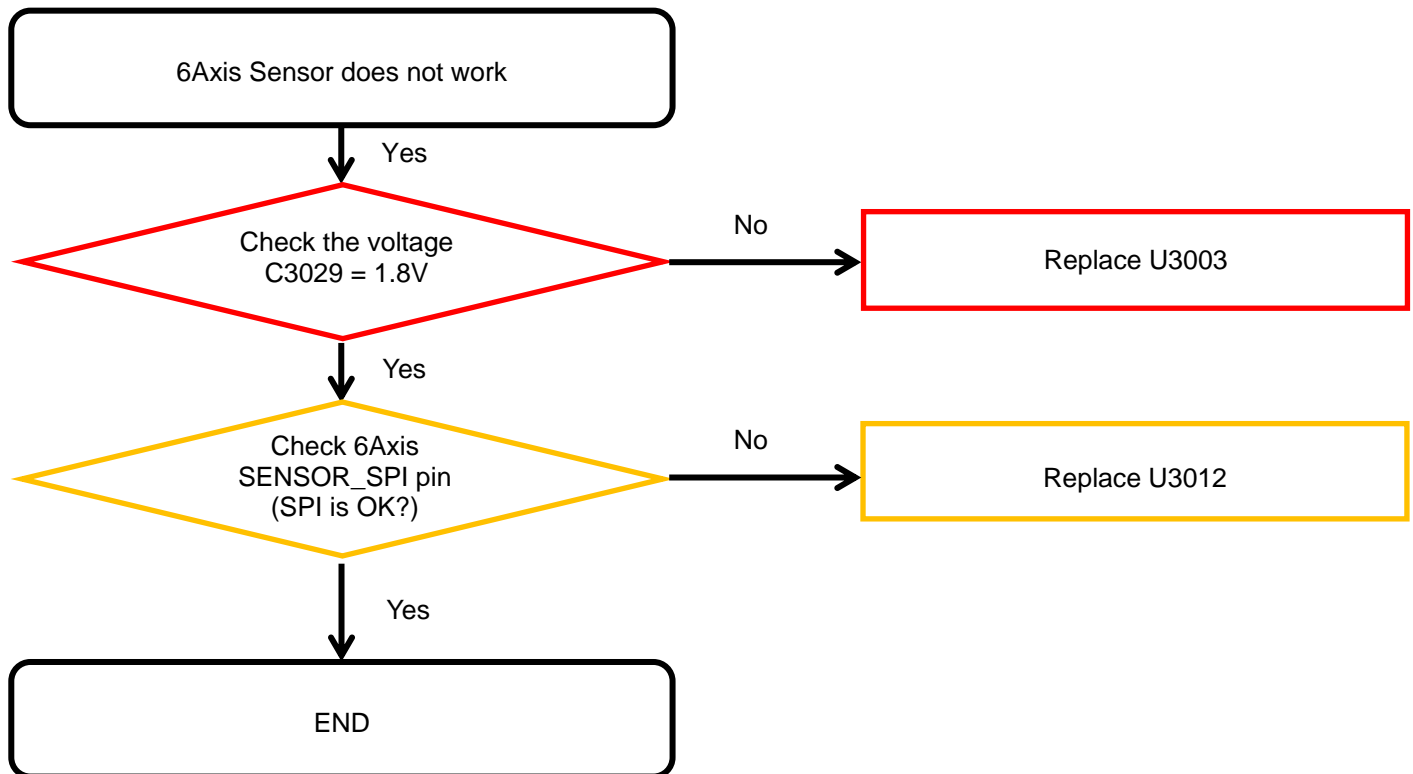
8. Level 3 Repair

8-4-8-1. Magnetic Sensor



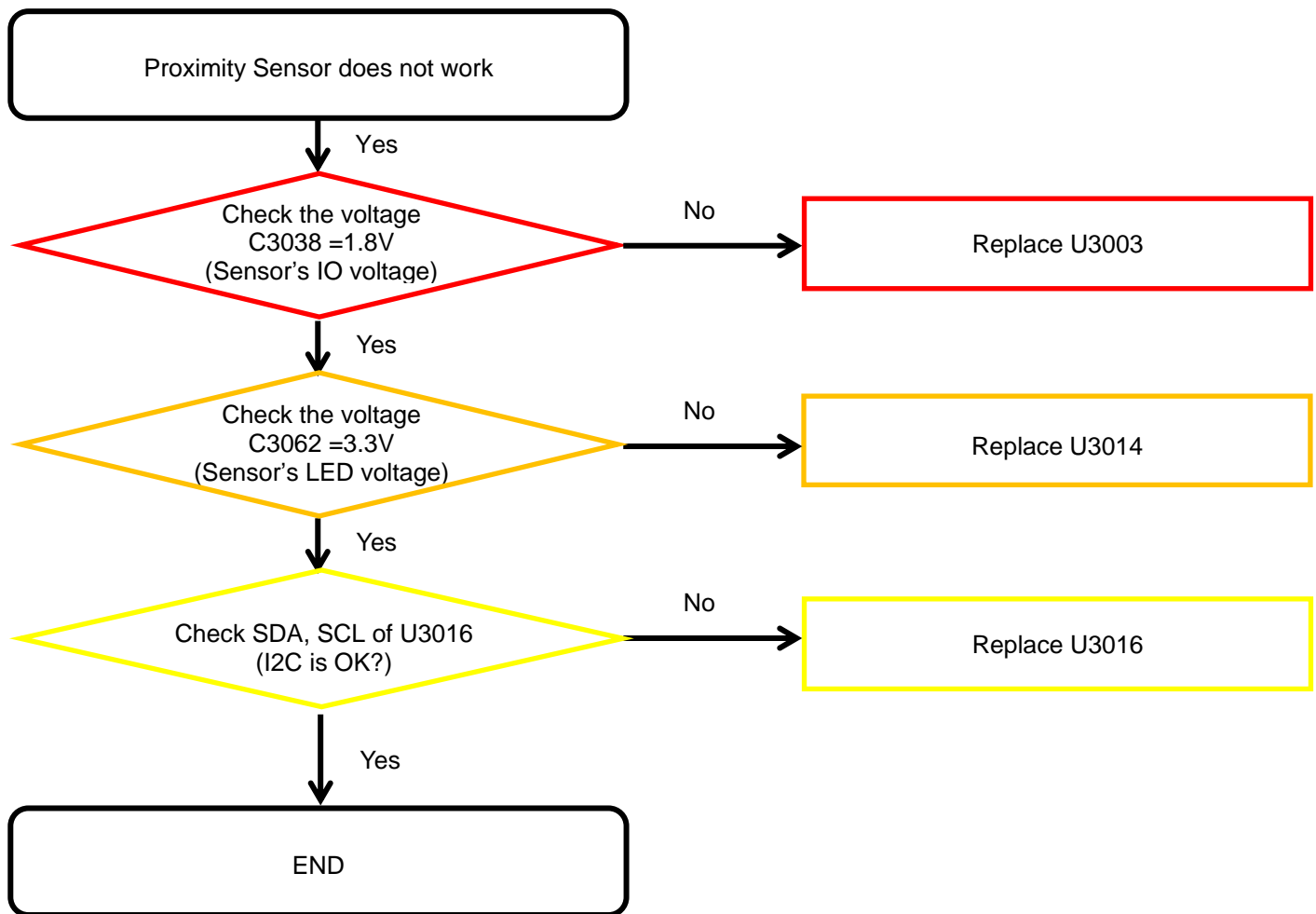
8. Level 3 Repair

8-4-8-2. 6Axis Sensor



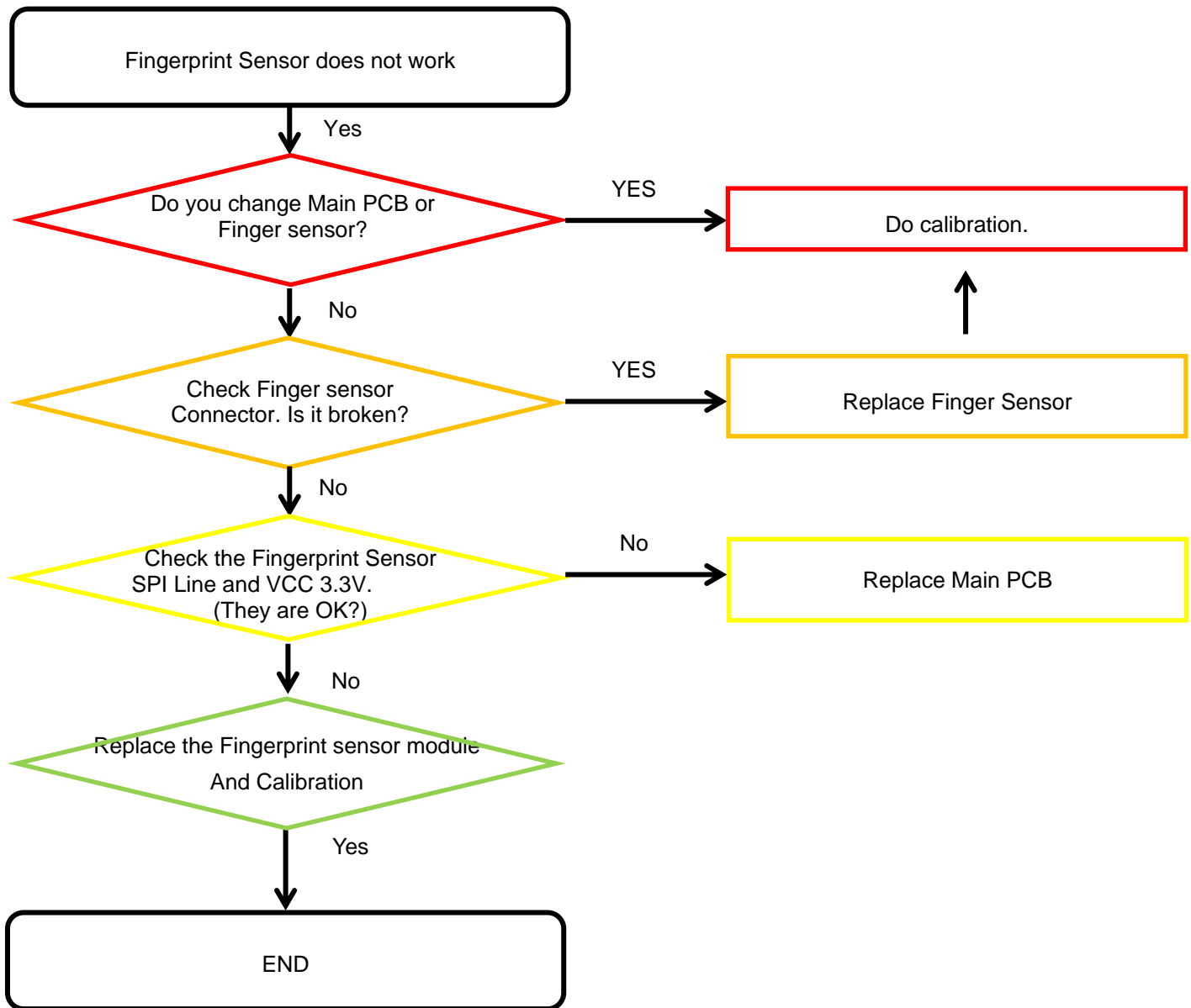
8. Level 3 Repair

8-4-8-3. Proximity



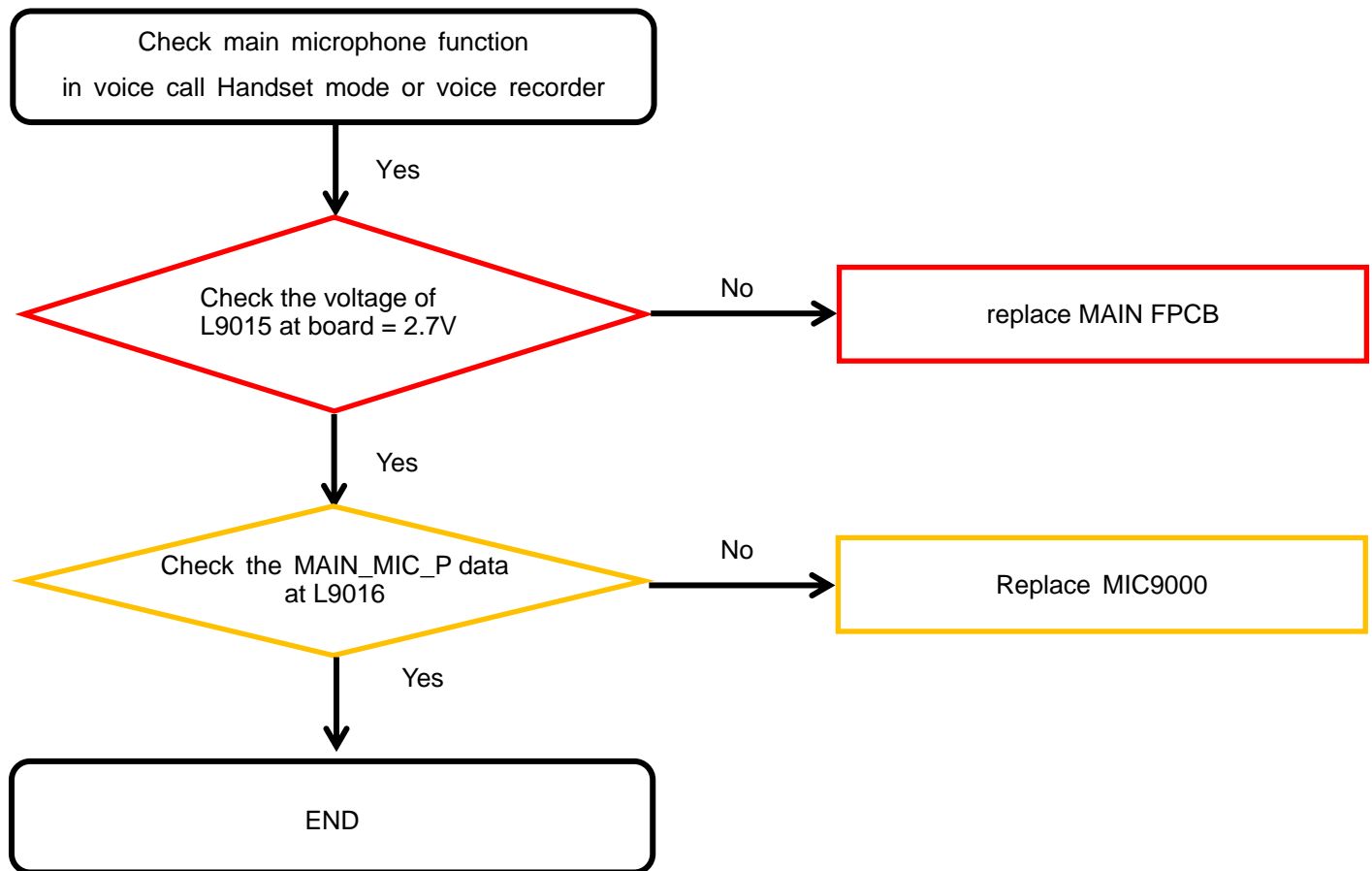
8. Level 3 Repair

8-4-8-4. Fingerprint Sensor



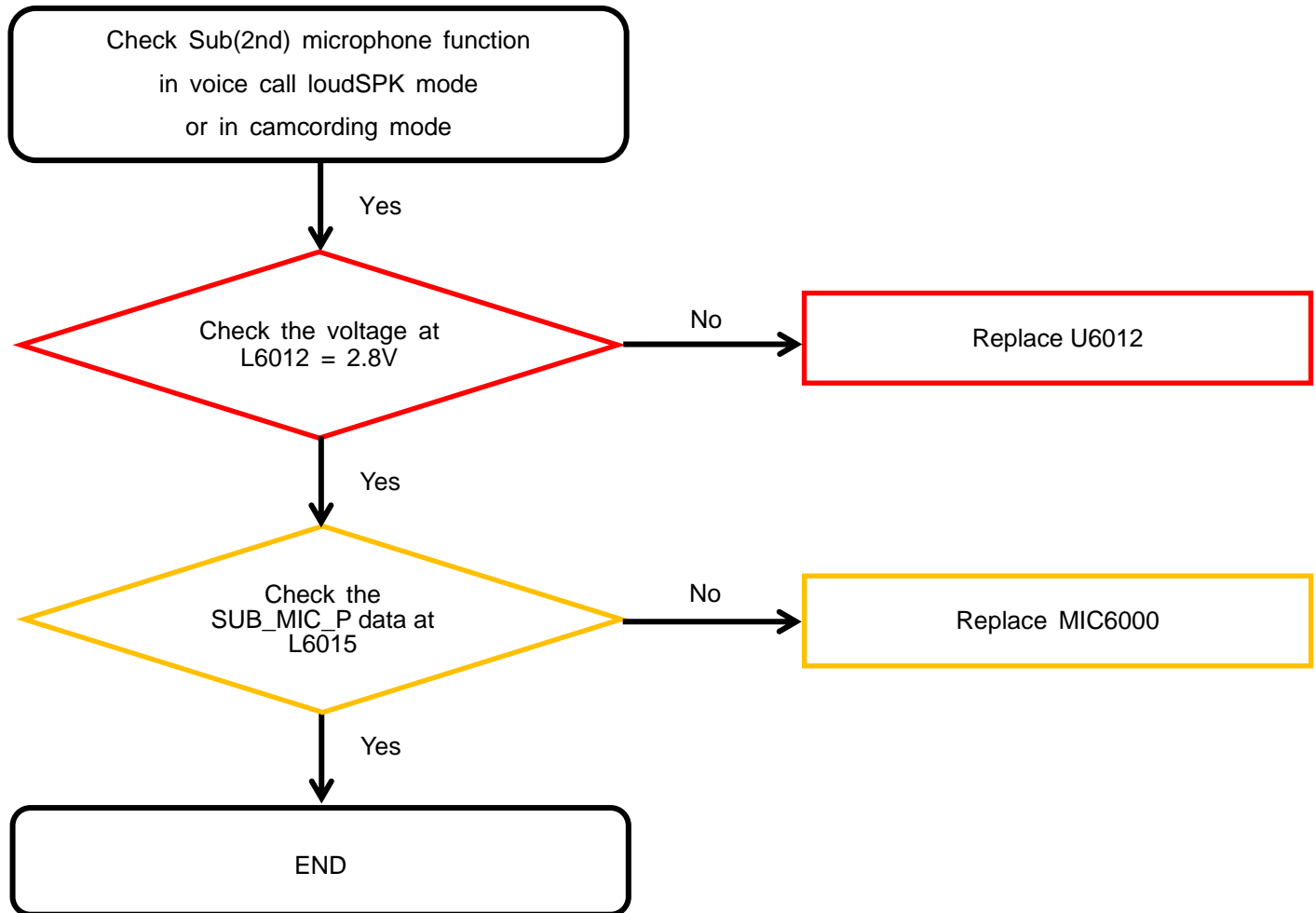
8. Level 3 Repair

8-4-9-1. Microphone Part - Main MIC



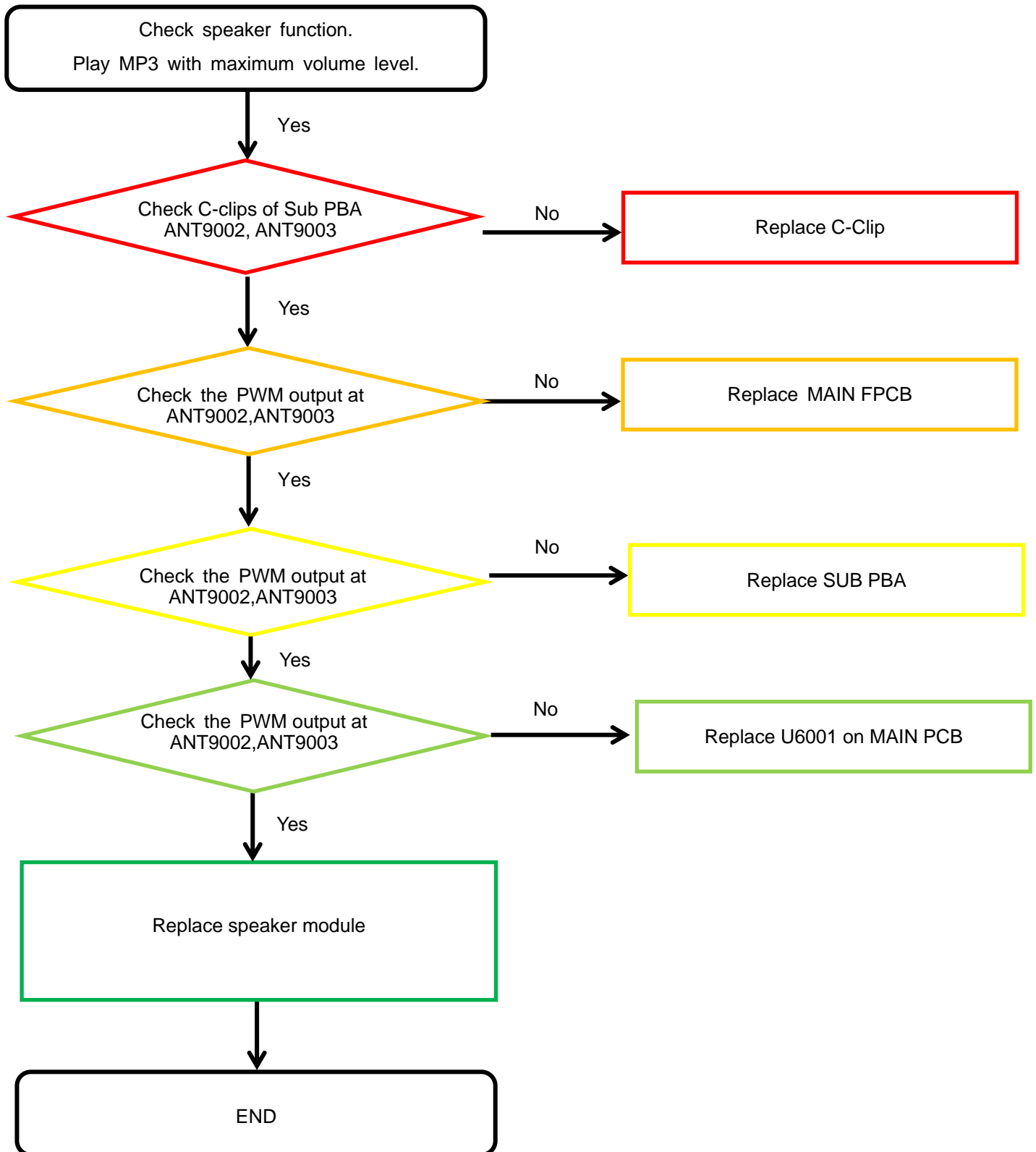
8. Level 3 Repair

8-4-9-2. Microphone Part - Sub(2nd) MIC



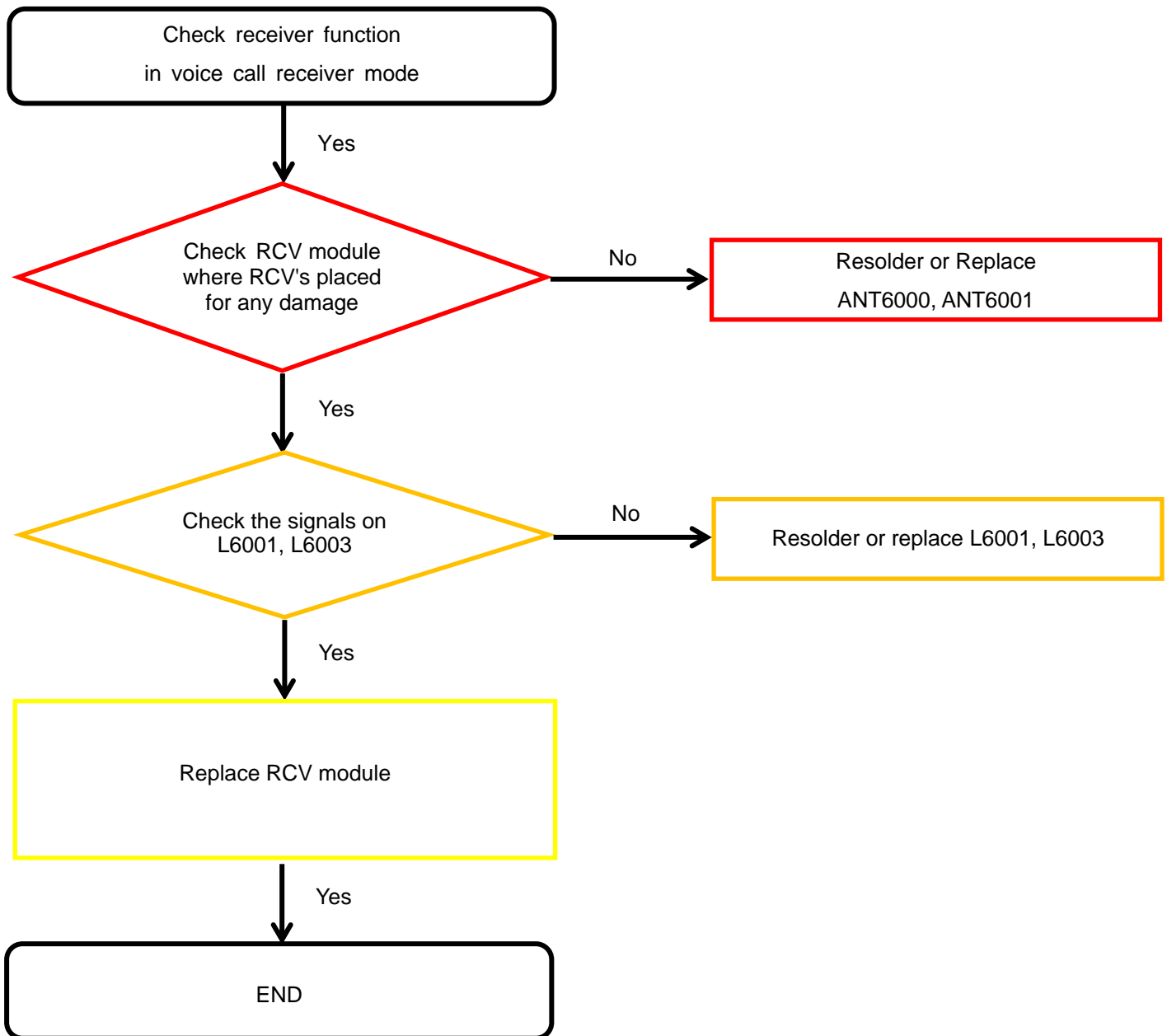
8. Level 3 Repair

8-4-10. Speaker Part



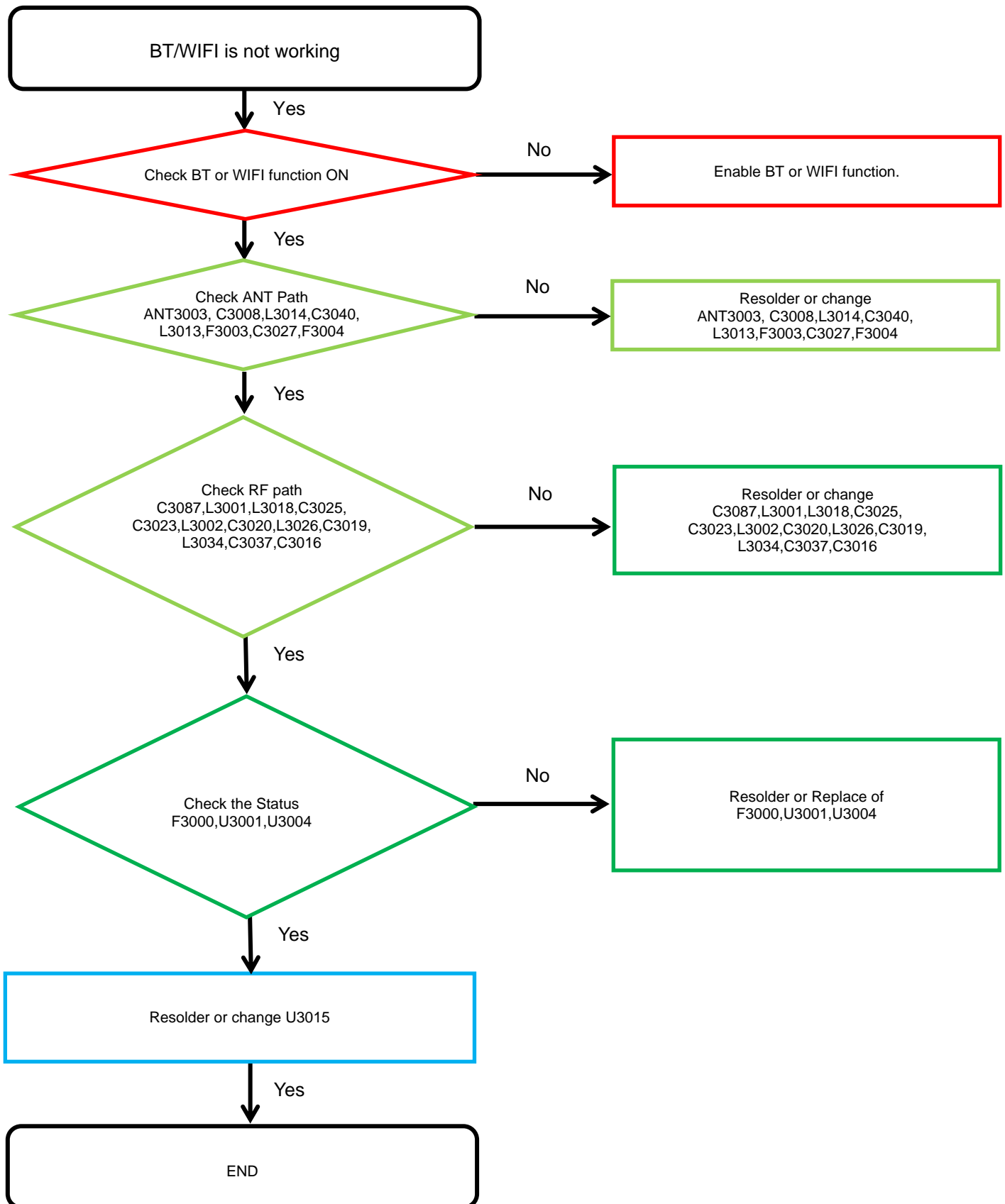
8. Level 3 Repair

8-4-11. Receiver Part



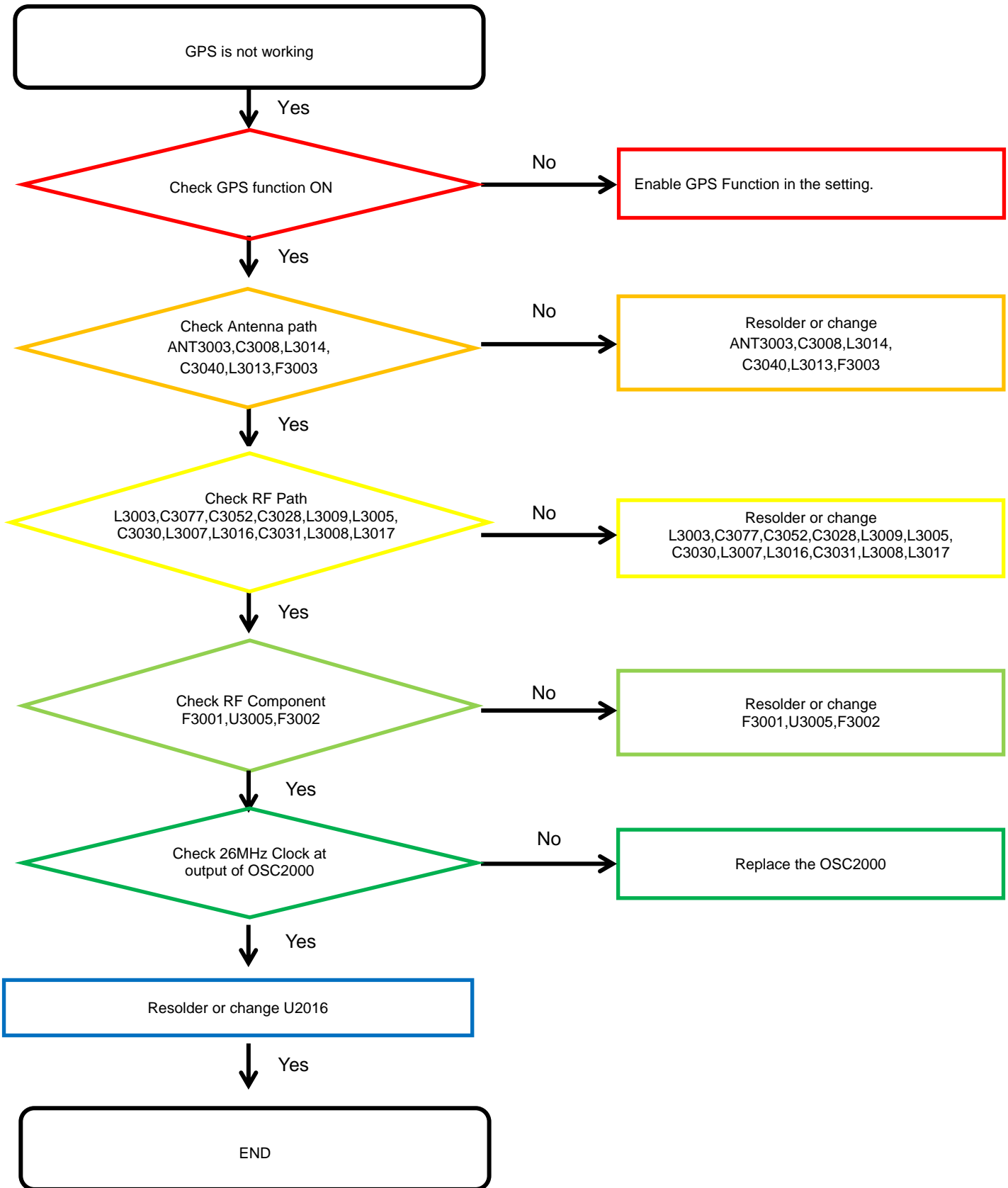
8. Level 3 Repair

8-4-12. BT/WIFI



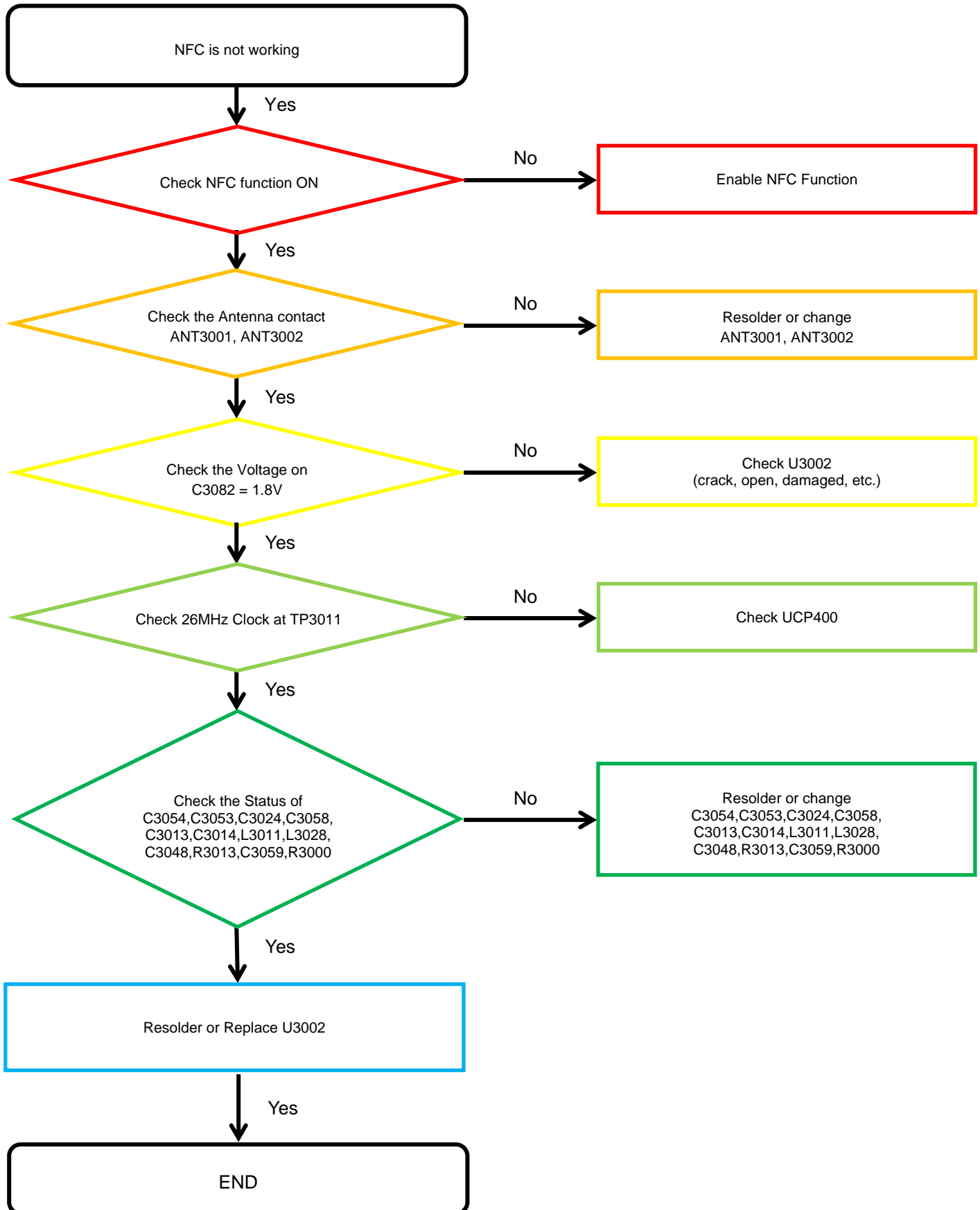
8. Level 3 Repair

8-4-13. GPS



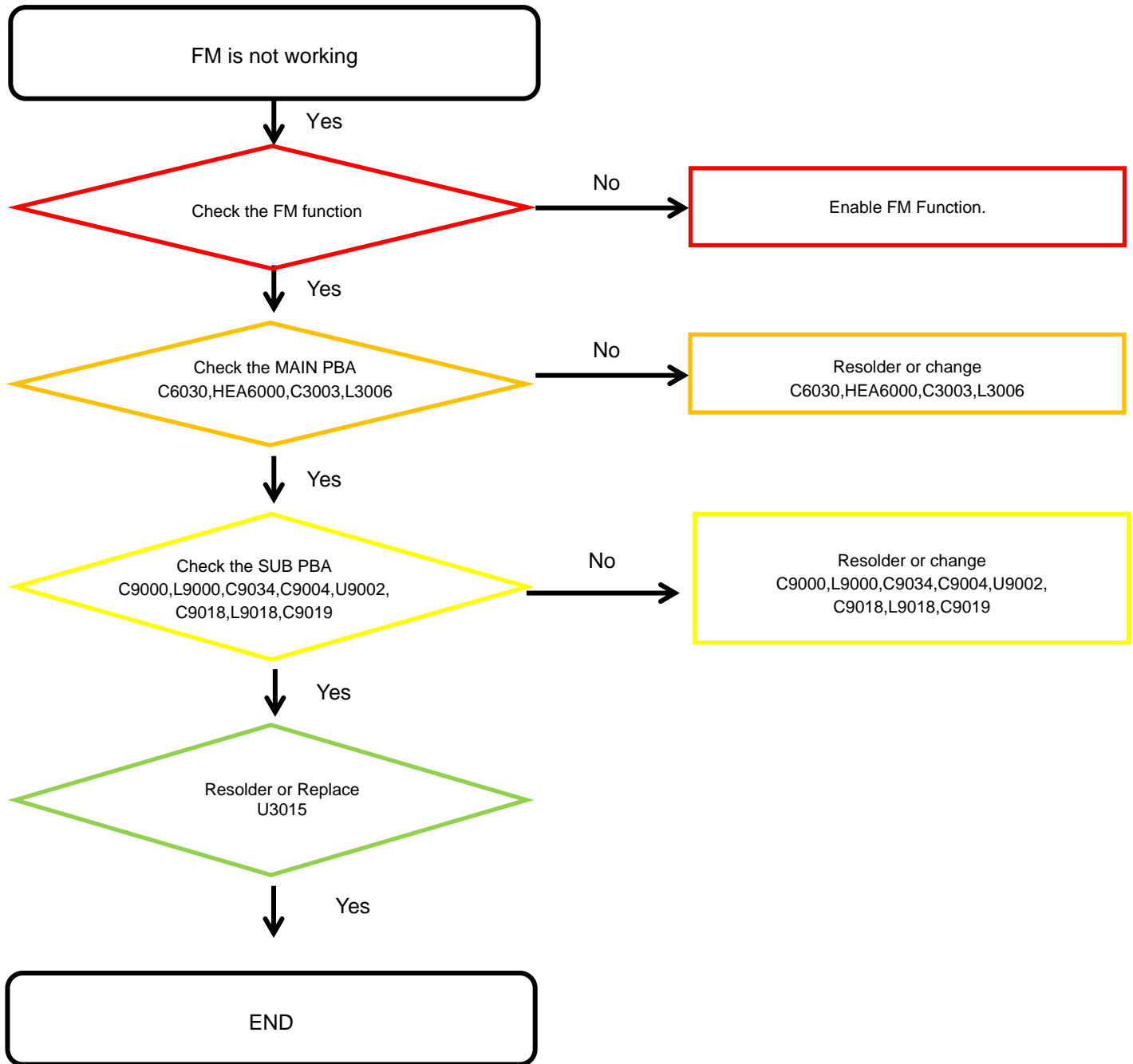
8. Level 3 Repair

8-4-14. NFC [SM-M307FN)



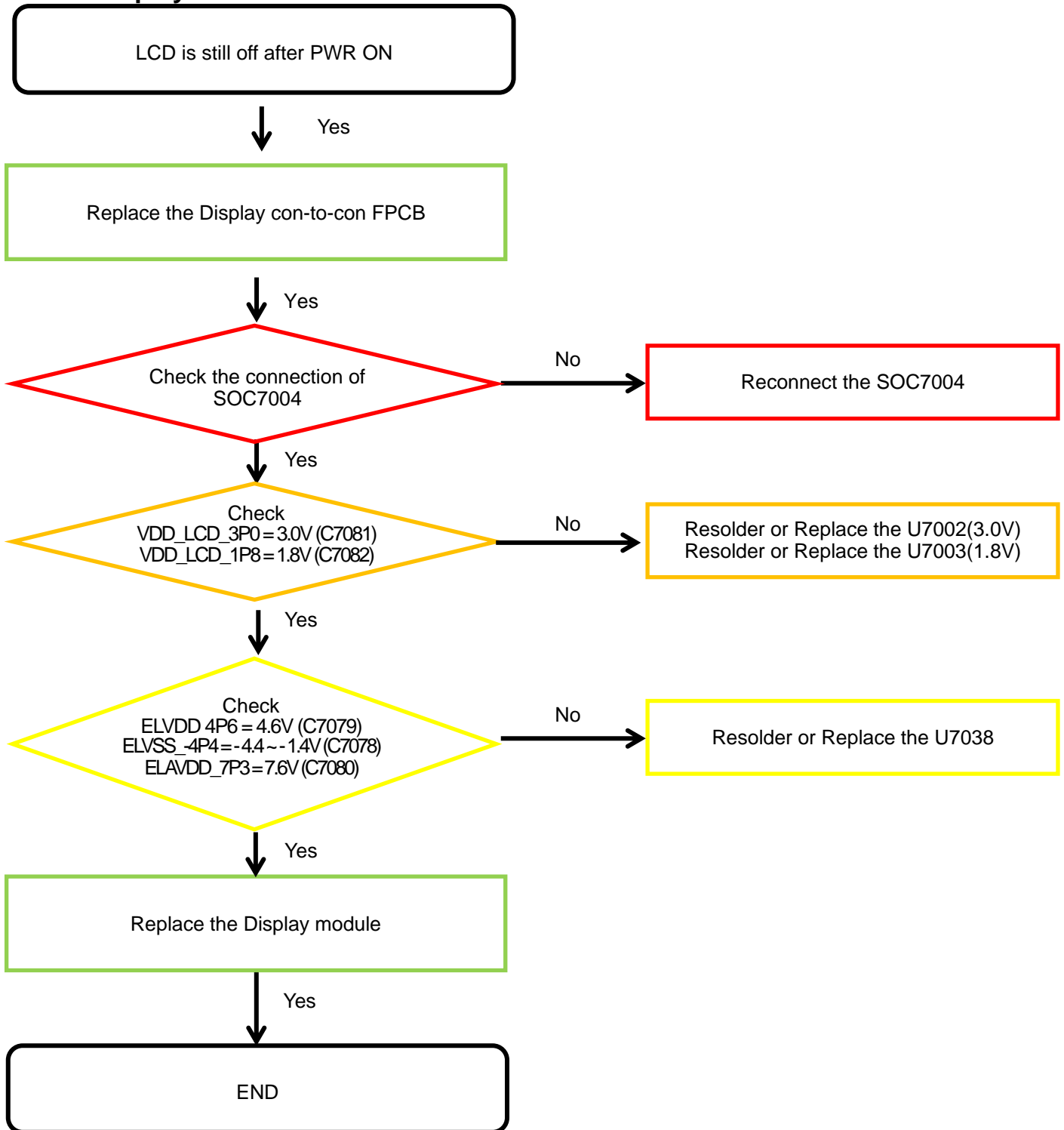
8. Level 3 Repair

8-4-15. FM radio part



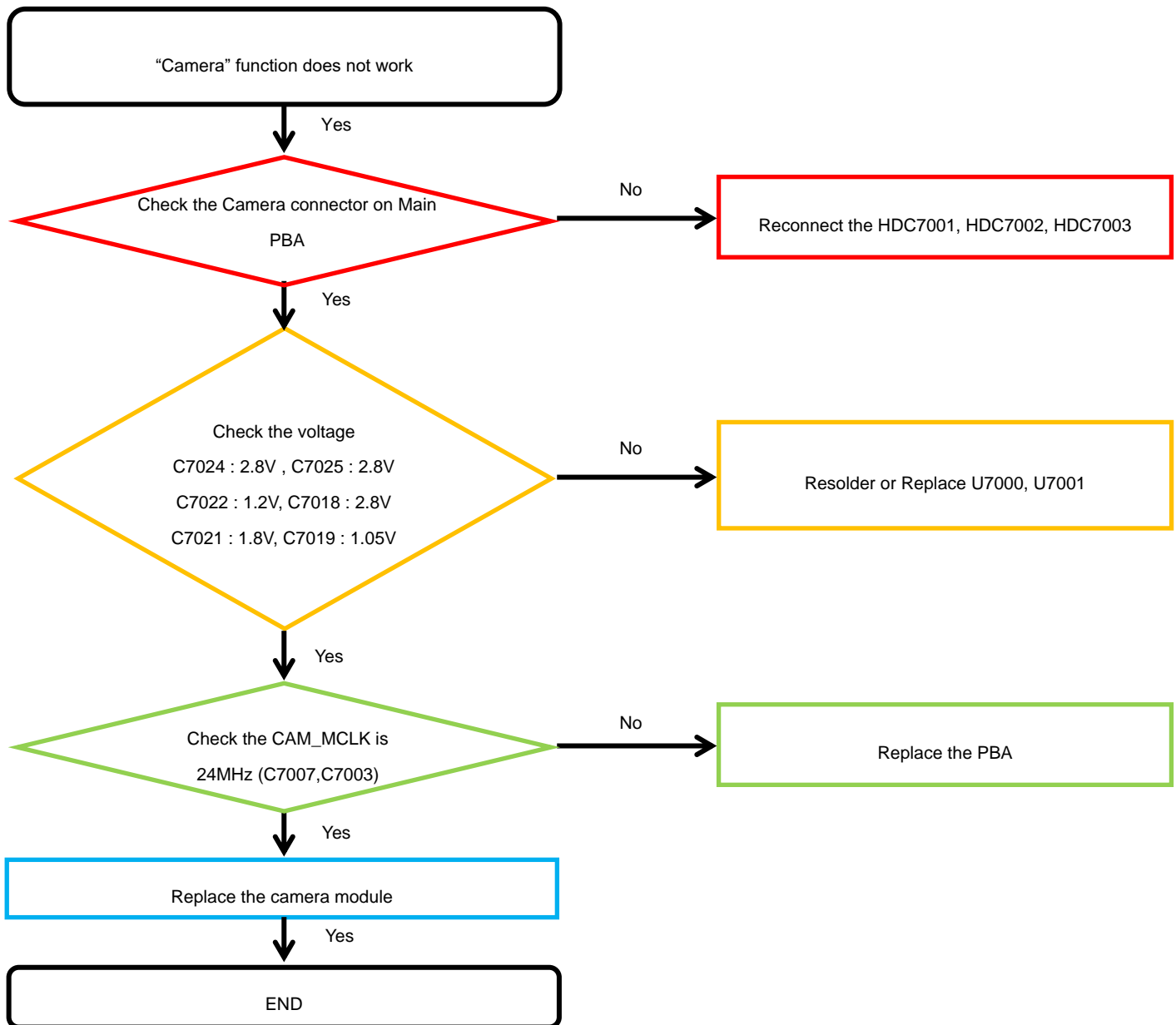
8. Level 3 Repair

8-4-16. Display



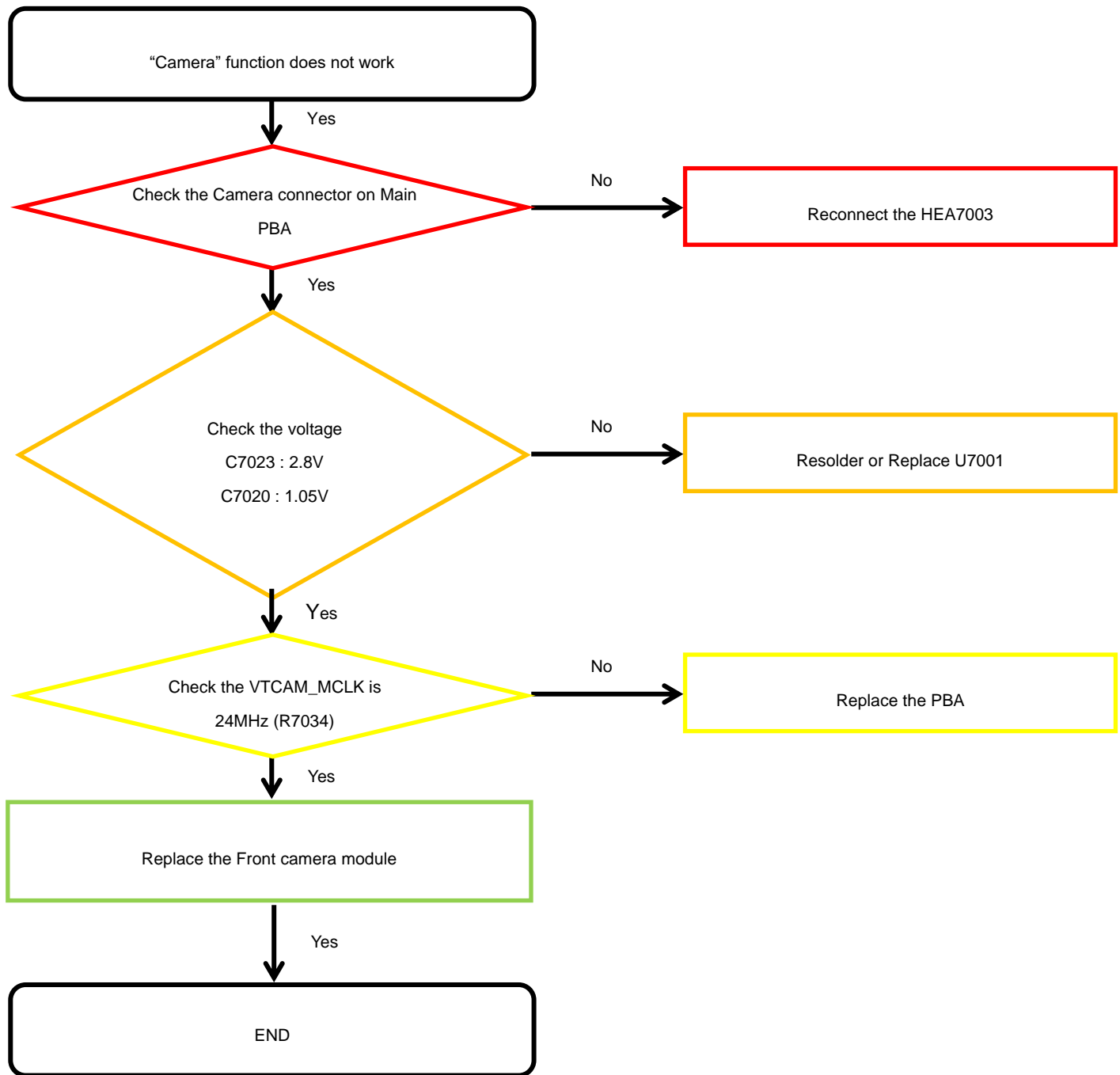
8. Level 3 Repair

8-4-17. Triple Camera



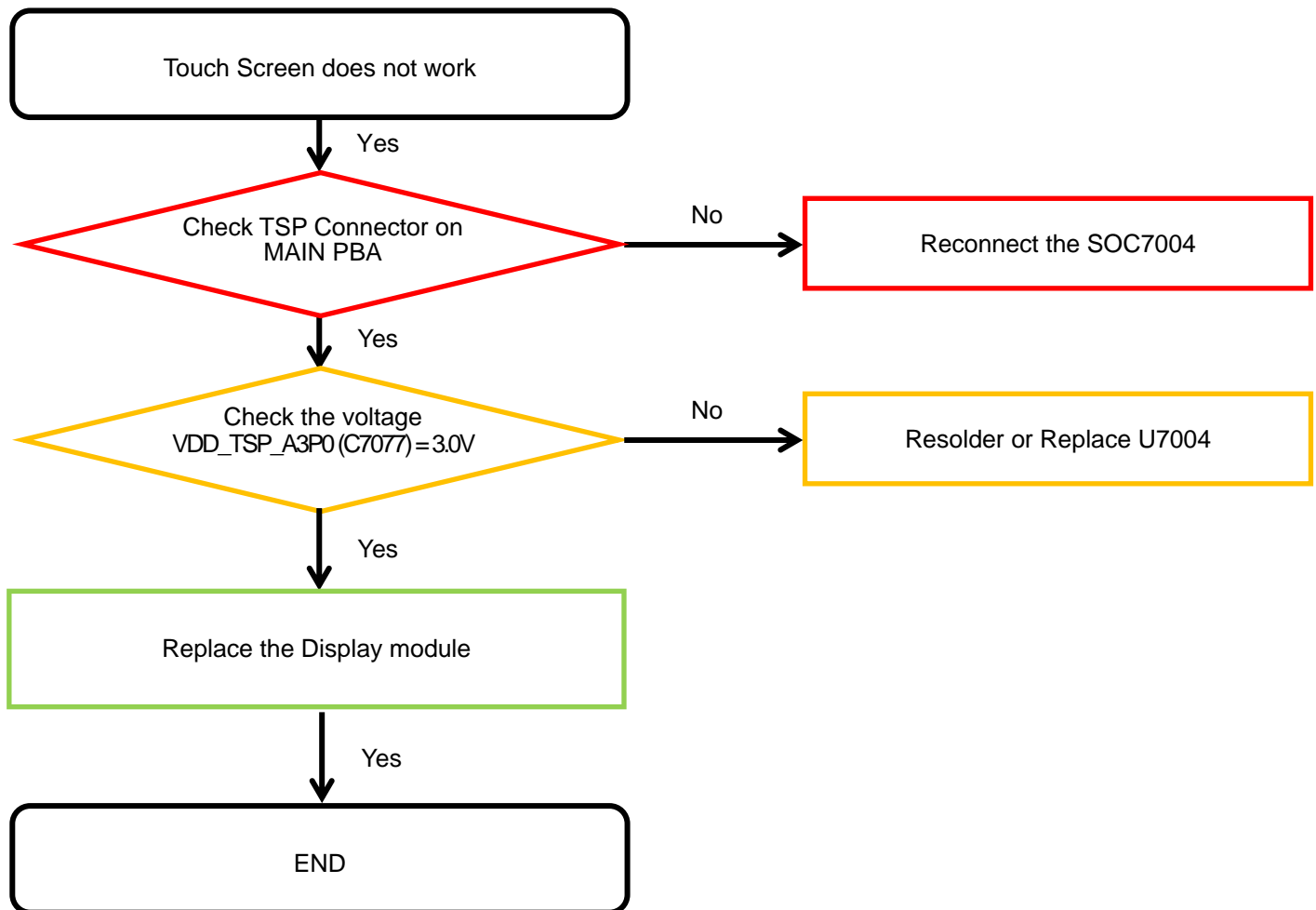
8. Level 3 Repair

8-4-18. VT CAMERA



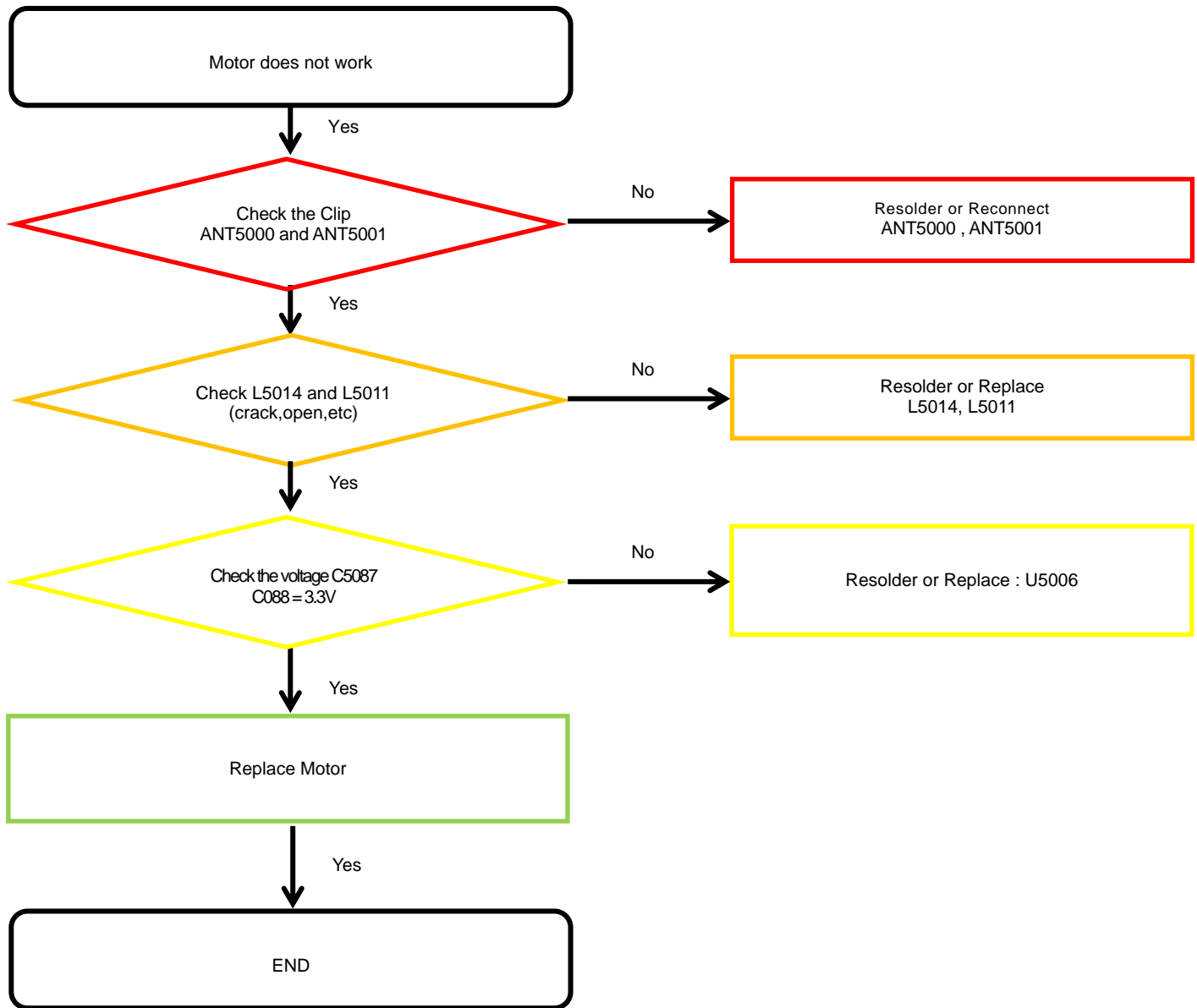
8. Level 3 Repair

8-4-19. TSP



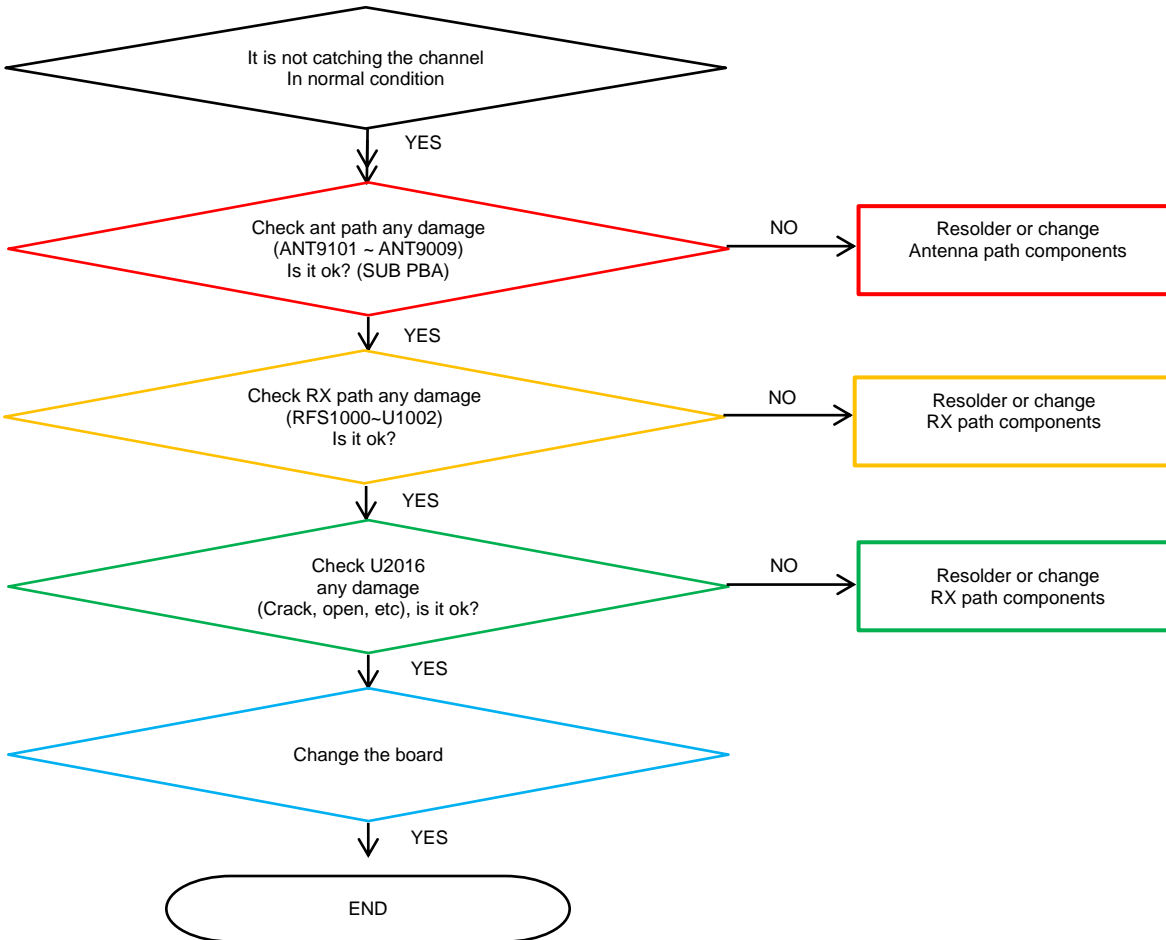
8. Level 3 Repair

8-4-20. Motor



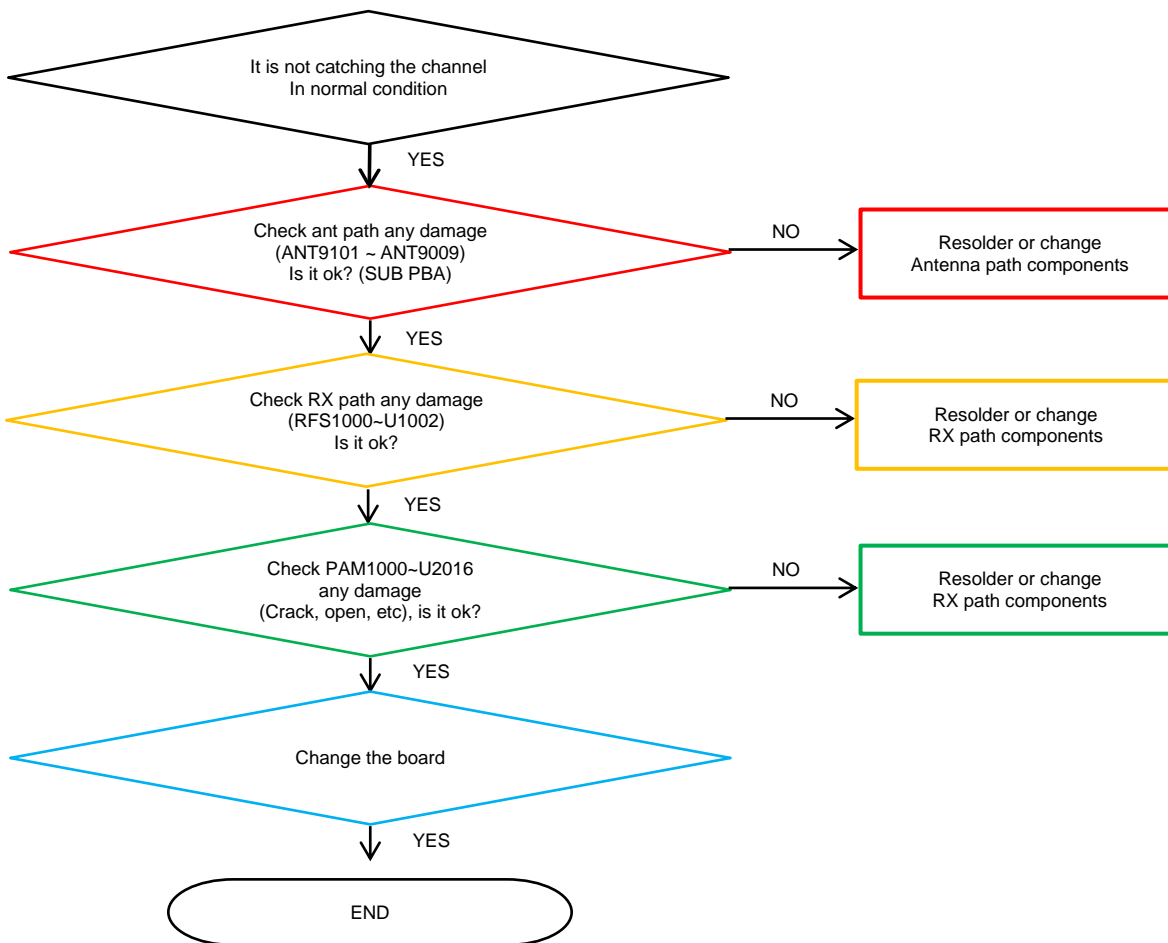
8. Level 3 Repair

8-4-21. GSM 850/900, WCDMA B5/8, LTE B5/8/20 PRx



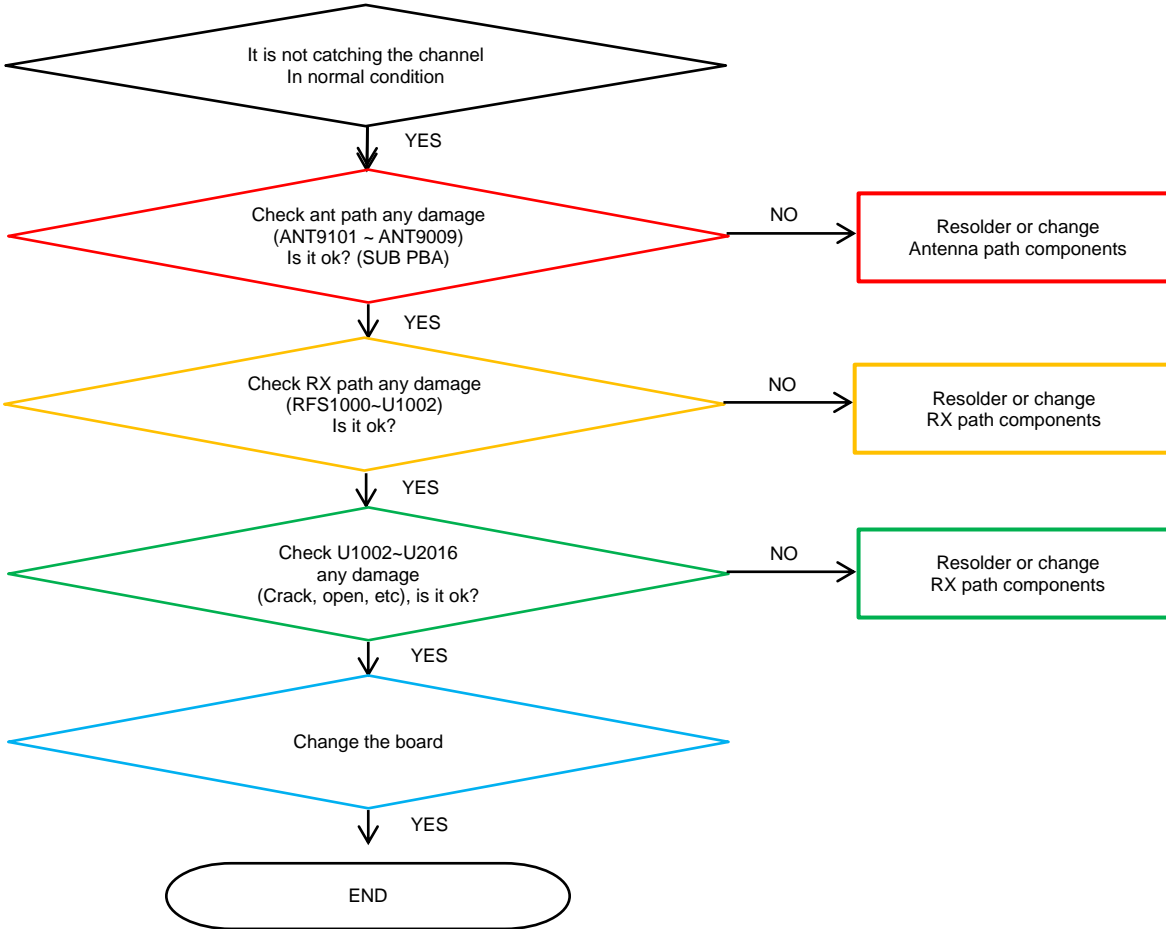
8. Level 3 Repair

8-4-22. LTE B7/38/40/41 PRx



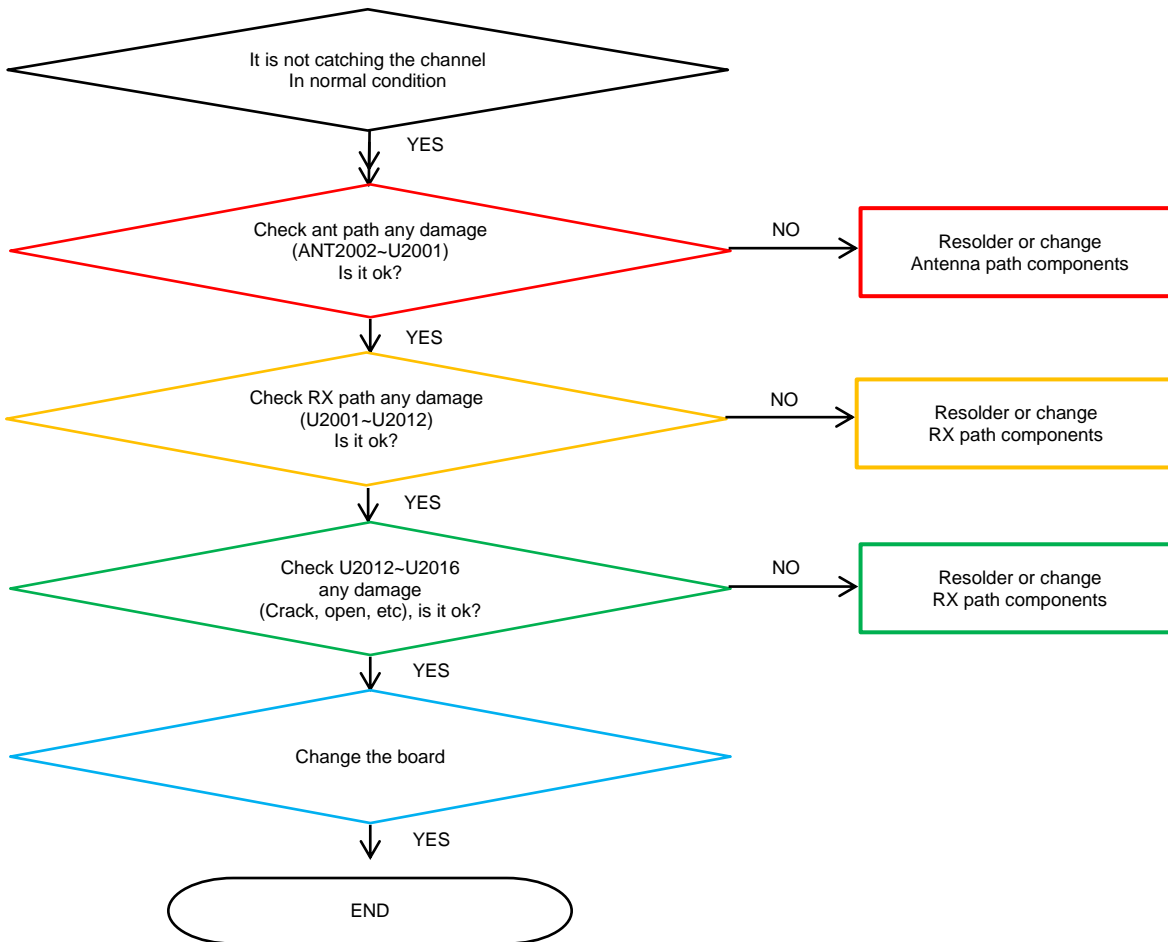
8. Level 3 Repair

8-4-23. GSM DCS/PCS, WCDMA B1/2, LTE B1/3 PRx



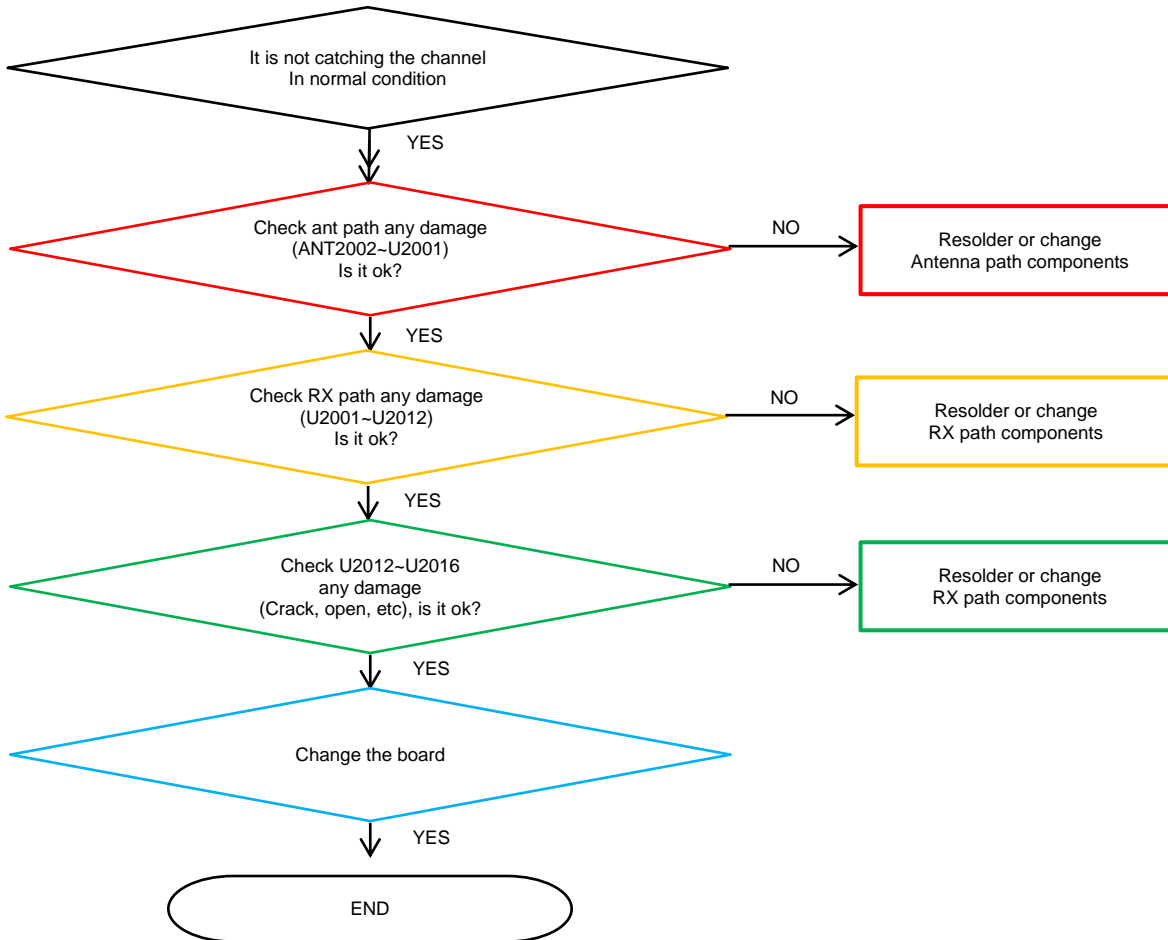
8. Level 3 Repair

8-4-24. GSM 850/900, WCDMA B5/8, LTE B5/8/20 DRx



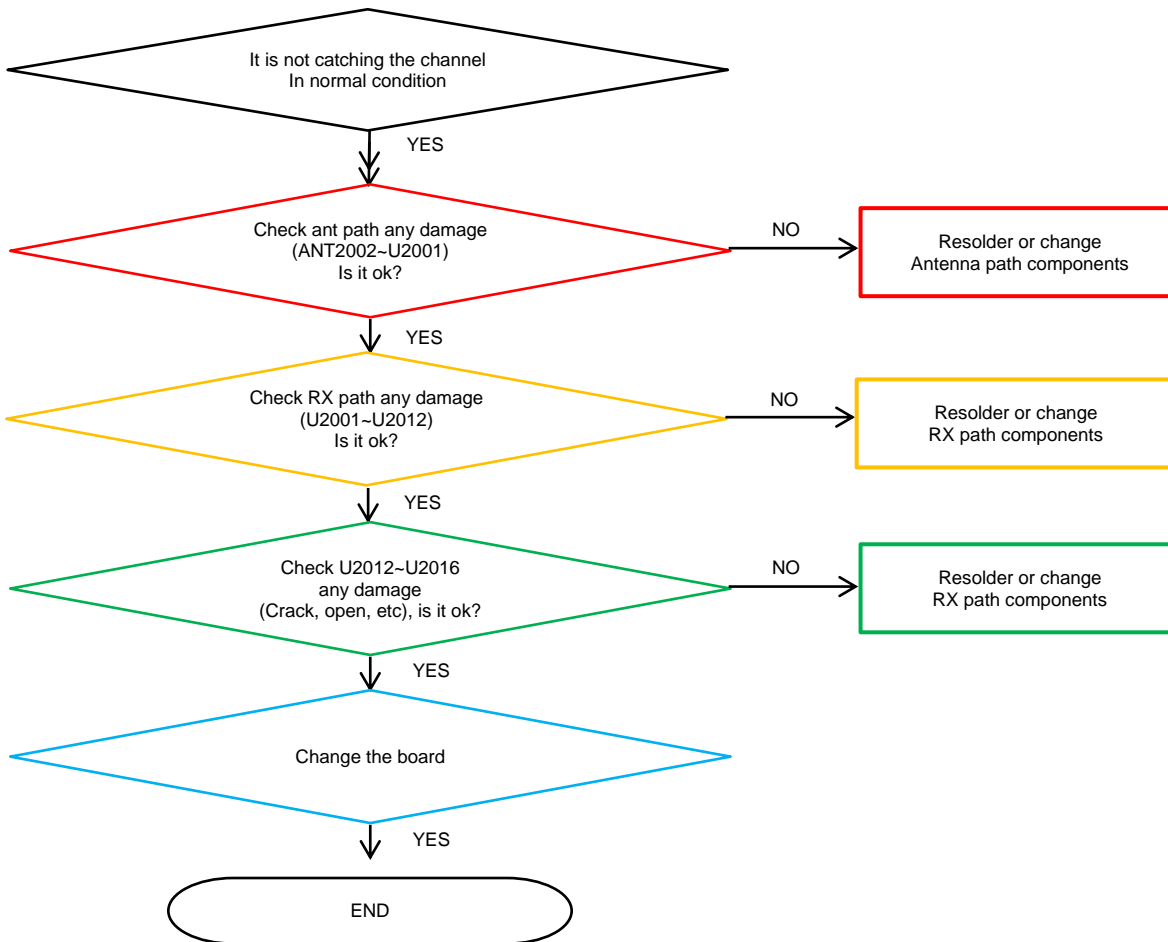
8. Level 3 Repair

8-4-25. LTE B7/38/40/41 DRx



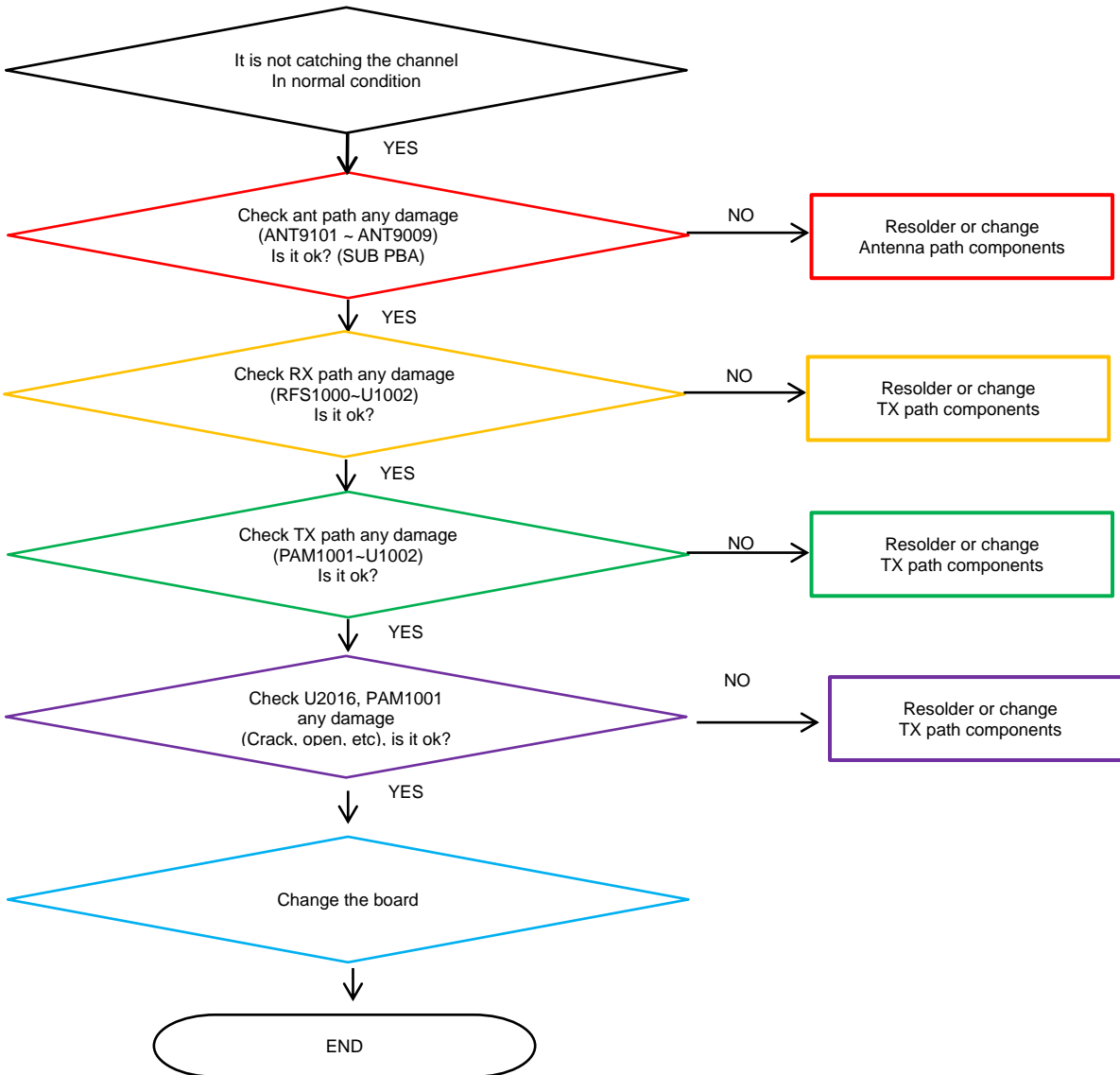
8. Level 3 Repair

8-4-26. GSM DCS/PCS, WCDMA B1/2, LTE B1/3 DRx



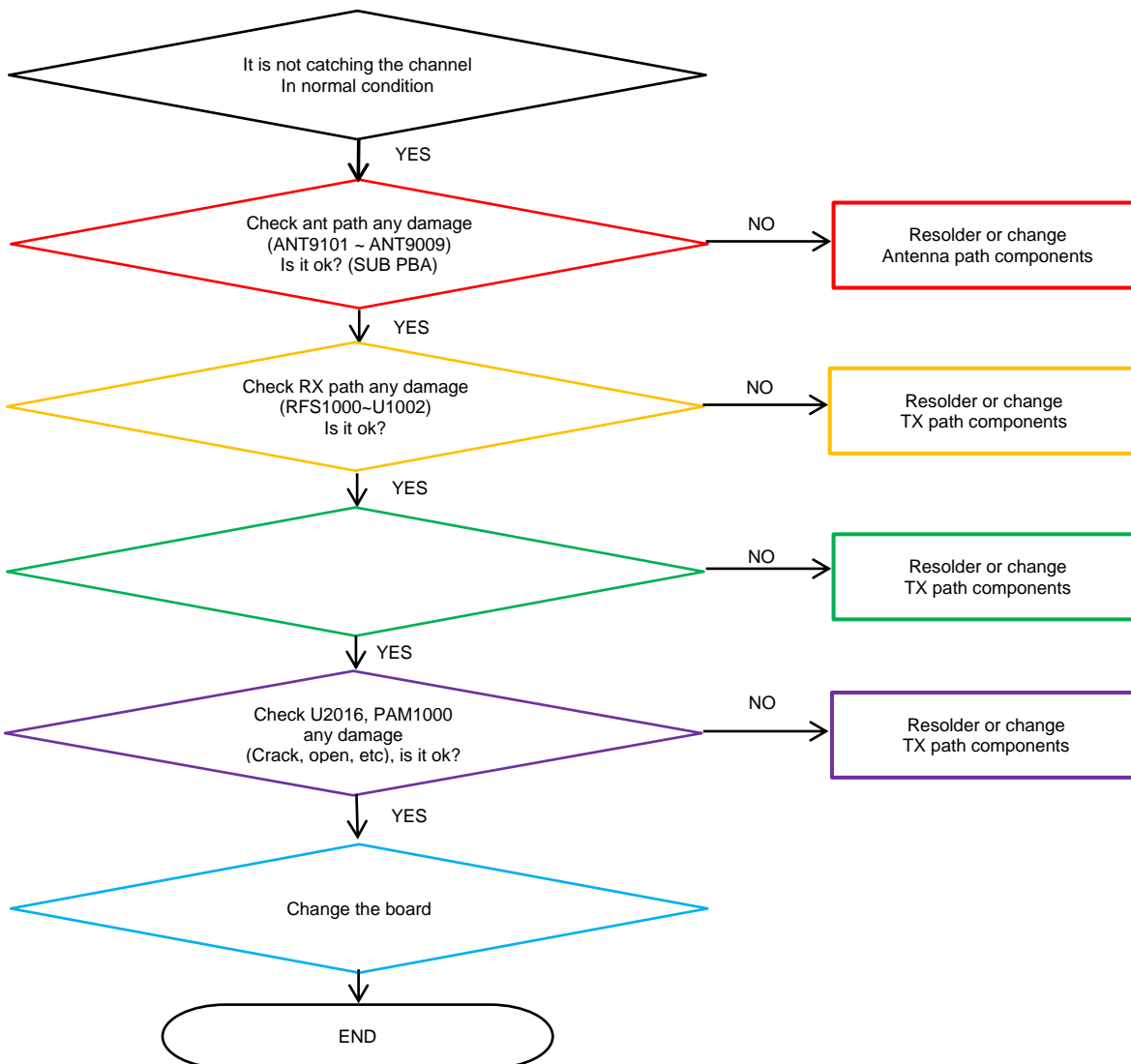
8. Level 3 Repair

8-4-27. GSM 850/900, WCDMA B5/8, LTE B5/8/20 Tx



8. Level 3 Repair

8-4-28. LTE B7/38/40/41 Tx



8. Level 3 Repair

8-4-29. GSM DCS/PCS, WCDMA B1/2, LTE B1/3 Tx

