

1. Safety Precautions

1-1. Repair Precaution

Before attempting any repair or detailed tuning, shield the device from RF noise or static electricity discharges.

Use only demagnetized tools that are specifically designed for small electronic repairs, as most electronic parts are sensitive to electromagnetic forces.

Use only high quality screwdrivers when servicing products. Low quality screwdrivers can easily damage the heads of screws.

Use only conductor wire of the properly gauge and insulation for low resistance, because of the low margin of error of most testing equipment.

We recommend 22-gauge twisted copper wire.

Hand-soldering is not recommended, because printed circuit boards (PCBs) can be easily damaged, even with relatively low heat. Never use a soldering iron with a power rating of more than 100 watts and use only lead-free solder with a melting point below 250°C (482°F).

Prior to disassembling the battery charger for repair, ensure that the AC power is disconnected.

Always use the replacement parts that are registered in the SEC system. Third-party replacement parts may not function properly.

1. Safety Precautions

1-2. ESD(Electrostatically Sensitive Devices) Precaution

Many semiconductors and ESDs in electronic devices are particularly sensitive to static discharge and can be easily damaged by it. We recommend protecting these components with conductive anti-static bags when you store or transport them.

Always use an anti-static strap or wristband and remove electrostatic buildup or dissipate static electricity from your body before repairing ESDs.

Ensure that soldering irons have AC adapter with ground wires and that the ground wires are properly connected.

Use only desoldering tools with plastic tips to prevent static discharge.

Properly shield the work environment from accidental electrostatic discharge before opening packages containing ESDs.

The potential for static electricity discharge may be increased in low humidity environments, such as air-conditioned rooms. Increase the airflow to the working area to decrease the chance of accidental static electricity discharges.

2. Specification

2-1. GSM General Specification

Item		GSM 850	EGSM 900	DCS1800	PCS1800
Freq. Band[MHz]		824~849	880~915	1710~1785	1850~1910
Uplink/Downlink		869~894	925~960	1805~1880	1930~1990
ARFCN range		128~251	0~124 & 975~1023	512~885	512~810
Tx/Rx spacing		45MHz	45MHz	95MHz	80MHz
Mod. Bit rate/ Bit Period		270.833kbps 3.692us	270.833kbps 3.692us	270.833kbps 3.692us	270.833kbps 3.692us
Time Slot Period/ Frame Period		576.9us 4.615ms	576.9us 4.615ms	576.9us 4.615ms	576.9us 4.615ms
Modulation	GSM/ EGPRS	GMSK/ 8PSK	GMSK/ 8PSK	GMSK/ 8PSK	GMSK/ 8PSK
MS Power		33dBm~5dBm	33dBm~5dBm	30dBm~0dBm	30dBm~0dBm
Power Class		4(GMSK) E2(8PSK)	4(GMSK) E2(8PSK)	1(GMSK) E2(8PSK)	1(GMSK) E2(8PSK)
Sensitivity		-102dBm	-102dBm	-100dBm	-100dBm
TDMA Mux		8	8	8	8

2. Specification

2-2. GSM Tx Power Class

TX Power control level	GSM850	TX Power control level	EGSM900	TX Power control level	DCS1800	TX Power control level	PCS1900	TX Power control level
5	33±2 dBm	5	33±2 dBm	0	30±3 dBm	0	30±3 dBm	0
6	31±2 dBm	6	31±2 dBm	1	28±3 dBm	1	28±3 dBm	1
7	29±2 dBm	7	29±2 dBm	2	26±3 dBm	2	26±3 dBm	2
8	27±2 dBm	8	27±2 dBm	3	24±3 dBm	3	24±3 dBm	3
9	25±2 dBm	9	25±2 dBm	4	22±3 dBm	4	22±3 dBm	4
10	23±2 dBm	10	23±2 dBm	5	20±3 dBm	5	20±3 dBm	5
11	21±2 dBm	11	21±2 dBm	6	18±3 dBm	6	18±3 dBm	6
12	19±2 dBm	12	19±2 dBm	7	16±3 dBm	7	16±3 dBm	7
13	17±2 dBm	13	17±2 dBm	8	14±3 dBm	8	14±3 dBm	8
14	15±2 dBm	14	15±2 dBm	9	12±4 dBm	9	12±4 dBm	9
15	13±2 dBm	15	13±2 dBm	10	10±4 dBm	10	10±4 dBm	10
16	11±3 dBm	16	11±3 dBm	11	8±4 dBm	11	8±4 dBm	11
17	9±3 dBm	17	9±3 dBm	12	6±4 dBm	12	6±4 dBm	12
18	7±3 dBm	18	7±3 dBm	13	4±4 dBm	13	4±4 dBm	13
19	5±3 dBm	19	5±3 dBm	14	2±5 dBm	14	2±5 dBm	14
-	-	-	-	15	0±5 dBm	15	0±5 dBm	15

2. Specification

2-3. WCDMA General Specification

Item	WCDMA2100(B1)	WCDMA1900(B2)	WCDMA850(B5)	WCDMA900(B8)
Freq. Band[MHz] Uplink/Downlink	1920~1980 2110~2170	1850~1910 1930~1990	824~849 869~894	880~915 925~960
ARFCN range	UL: 9612~9888 DL: 10562~10838	UL: 9262~9538 DL: 9662~9938	UL: 4132~4233 DL: 4357~4458	UL: 2712~2868 DL: 2937~3088
Tx/Rx spacing	190MHz	80MHz	45MHz	45MHz
Mod. Bit rate/ Bit Period	42.2Mbps(DL) 5.42Mbps(UL)	42.2Mbps(DL) 5.42Mbps(UL)	42.2Mbps(DL) 5.42Mbps(UL)	42.2Mbps(DL) 5.42Mbps(UL)
Time Slot Period/ Frame Period	WCDMA 10ms/0.667ms HSPA 2ms/0.667ms	WCDMA 10ms/0.667ms HSPA 2ms/0.667ms	WCDMA 10ms/0.667ms HSPA 2ms/0.667ms	WCDMA 10ms/0.667ms HSPA 2ms/0.667ms
Modulation	QPSK 16QAM 64QAM	QPSK 16QAM 64QAM	QPSK 16QAM 64QAM	QPSK 16QAM 64QAM
MS Power (dBm)	25.7 ~ -49(↓)	25.7 ~ -49(↓)	25.7 ~ -49(↓)	25.7 ~ -49(↓)
Power Class	3(max+24dBm)	3(max+24dBm)	3(max+24dBm)	3(max+24dBm)
Sensitivity	-106dBm	-104dBm	-104dBm	-103dBm

2. Specification

2-4. LTE General Specification

Item	LTE Band1	LTE Band2	LTE Band3	LTE Band5	LTE Band7
Freq. Band[MHz] Uplink/Downlink	1920~1980 2110~2170	1850~1910 1930~1990	1710~1785 1805~1880	824~849 869~894	2500~2570 2620~2690
ARFCN range	UL:18000~18599 DL:0~599	UL:18600~19199 DL:600~1199	UL:19200~19949 DL:1200~1949	UL:20400~20649 DL:2400~2649	UL:20750~21449 DL:2750~3449
Tx/Rx spacing (MHz)	190	80	95	45	120
Channel Bandwidth (MHz)	5/10/15/20	1.4/3/5/10/15/20	1.4/3/5/10/15/20	1.4/3/5/10	5/10/15/20
Modulation	QPSK,16/64QAM	QPSK,16/64QAM	QPSK,16/64QAM	QPSK,16/64QAM	QPSK,16/64QAM
MS Power (dBm)	25.7~-39(↓)	25.7~-39(↓)	25.7~-39(↓)	25.7~-39(↓)	25.7~-39(↓)
Sensitivity (QPSK, BW 10MHz) (dBm)	-96.3	-94.3	-93.3	-94.3	-94.3

Item	LTE Band8	LTE Band20	LTE Band38	LTE Band40	LTE Band41
Freq. Band[MHz] Uplink/Downlink	880~915 925~960	832~862 791~821	2570~2620	2300~2400	2496~2690
ARFCN range	UL:21450-21799 DL:3450-3799	UL:24150~24449 DL:6150~6449	UL/DL:37750 ~ 38249	UL/DL:38650 ~ 39649	UL/DL:39650 ~ 41589
Tx/Rx spacing (MHz)	45	-41	0	0	0
Channel Bandwidth (MHz)	1.4/3/5/10	5/10/15/20	5/10/15/20	5/10/15/20	5/10/15/20
Modulation	QPSK,16/64QAM	QPSK,16/64QAM	QPSK,16/64QAM	QPSK,16/64QAM	QPSK,16/64QAM
MS Power (dBm)	25.7~-39(↓)	25.7~-39(↓)	25.7~-39(↓)	25.7~-39(↓)	25.7~-39(↓)
Sensitivity (QPSK, BW 10MHz) (dBm))	-93.3	-93.3	-96.3	-96.3	-94.3

3. Product Function

Main Function

Item	Description
OS	Android P OS V9.0
RF	GSM850 / GSM900 / DCS1800 / PCS1900 WCDMA : B1/ B2/ B5/ B8 LTE: (FDD) B1/ B2/B3/ B5/ B7/ B8/ B20 (TDD) B38/ B40/ B41
Battery	3400mAh
Base Band	1.6GHz Octa
Other RF	A-GPS (GPS, Glonass, Beidou, Galileo), BT5.0, USB 2.0, WIFI 802.11 b/g/n 2.4Ghz
Camera	Rear Camera (13M : A/F, F1.9, Wide angle) with LED Flash, VT Camera (5MP,FF,F2.0)
LCD	6.22", HD+, 720x1520
RAM	2GB
Storage	32GB
Sensor	Accelerometer, Proximity Sensor, Virtual Light Sensing
Accessory	Charger: 5V/1A Data cable: 3.0pi, 0.8m(Type B/ USB-A)

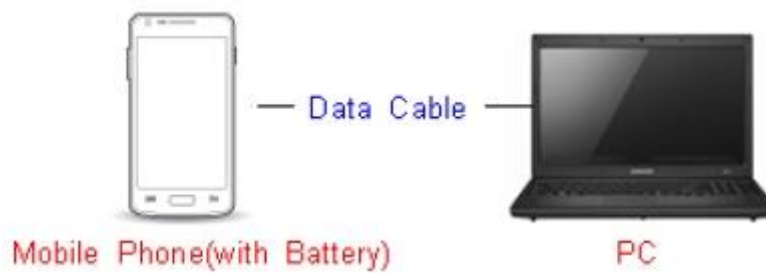
6. Level 1 Repair

6-1. S/W Update

6-1-1. Preparation

- S/W Update program : [Fenrir 5.17.xxxx](#)
- Mobile Phone
- Data Cable

※ Settings



Data Cable : [GH39-01710D](#)

6. Level 1 Repair

6-1-2. How to use 'Fenrir' S/W update program.

1) Launch Fenrir by clicking on the icon on the desktop



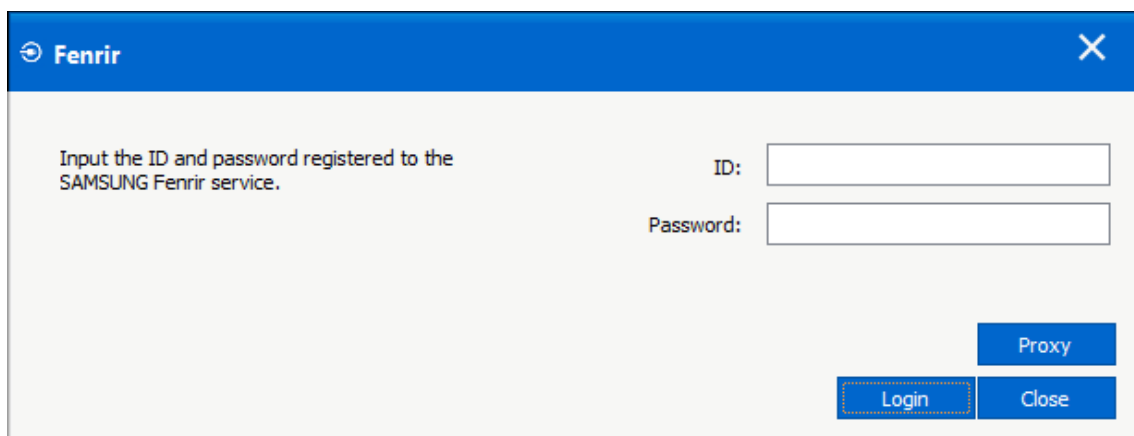
- SVH (Fenrir_Home) : It uses Home binary which does not have user data area in the memory when flashed to a device. (Keep user data)

- SVC (Fenrir_Factory) : It uses Factory binary which erases all user data in the memory when flashed to a device. (Clear user data)

- SVA (Fenrir_All) : It uses Factory and Home binaries. you can download Home and Factory binary in a PC (but requires double HDD storage and NW traffic)

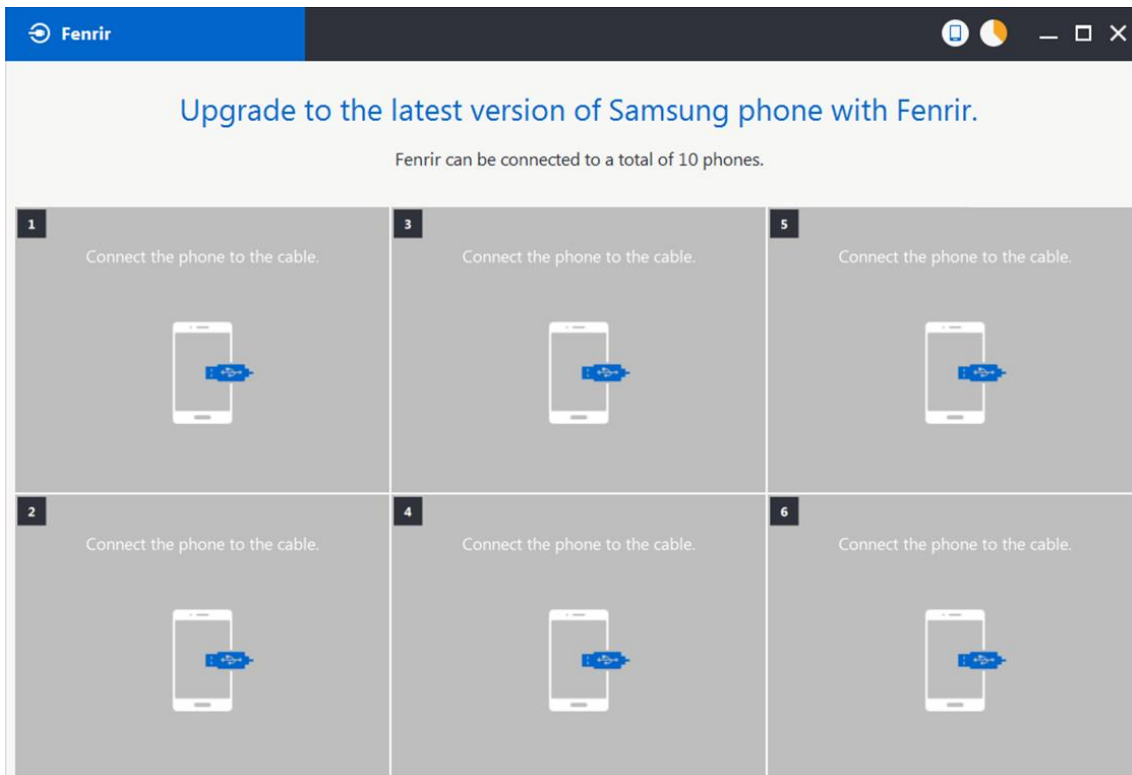
2) Input ID & password

※ You need to reset the ID information in case of PC change and format and repair, hard disk change



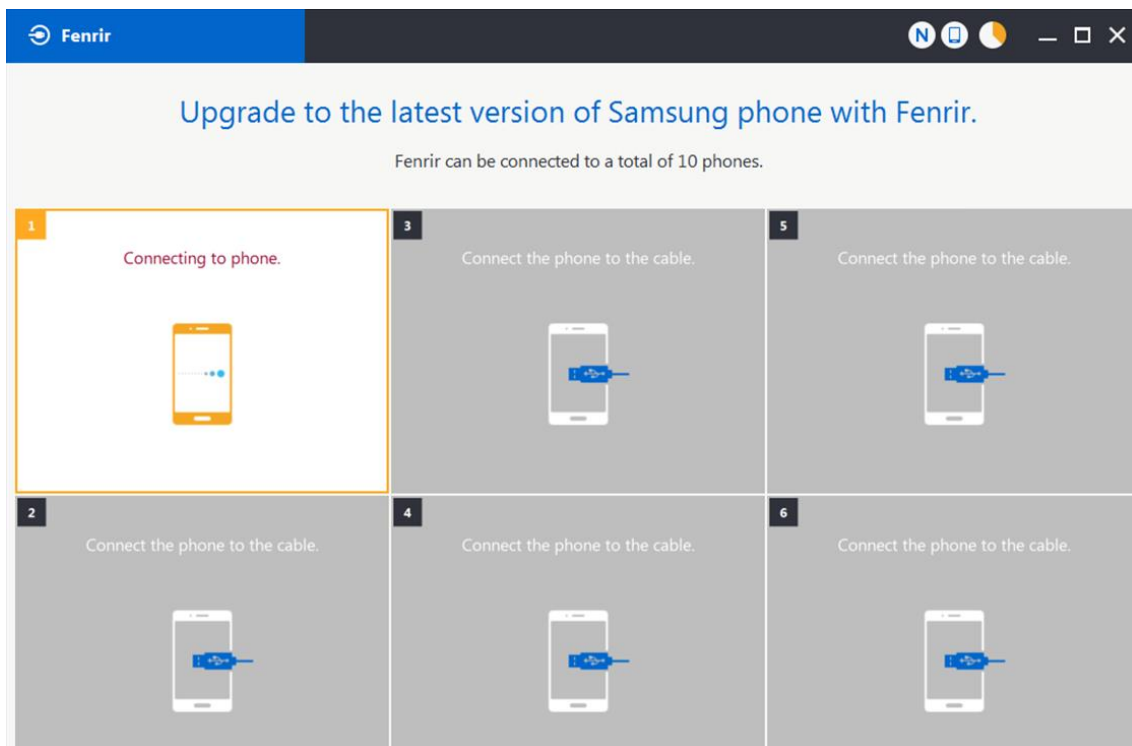
6. Level 1 Repair

3) Ensure device has sufficient charge (at least 20%) to start firmware update.



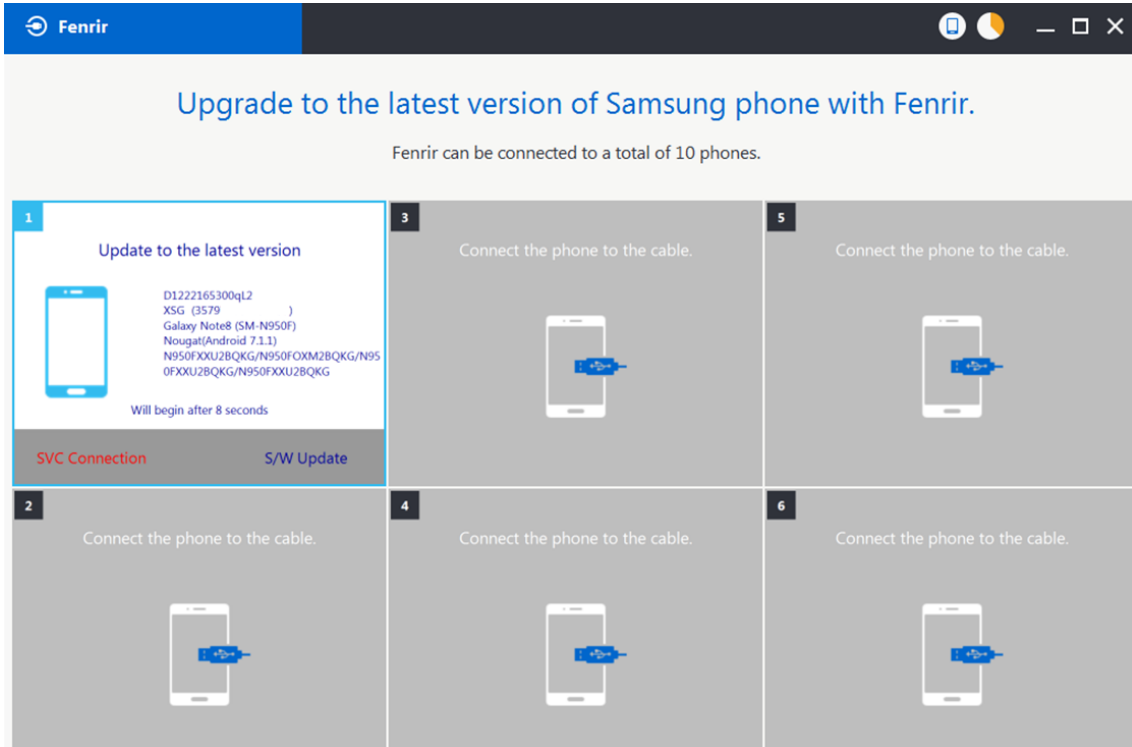
4) Connect the device to PC via data cable.

5) Upon USB connection, you will be presented with below screen.

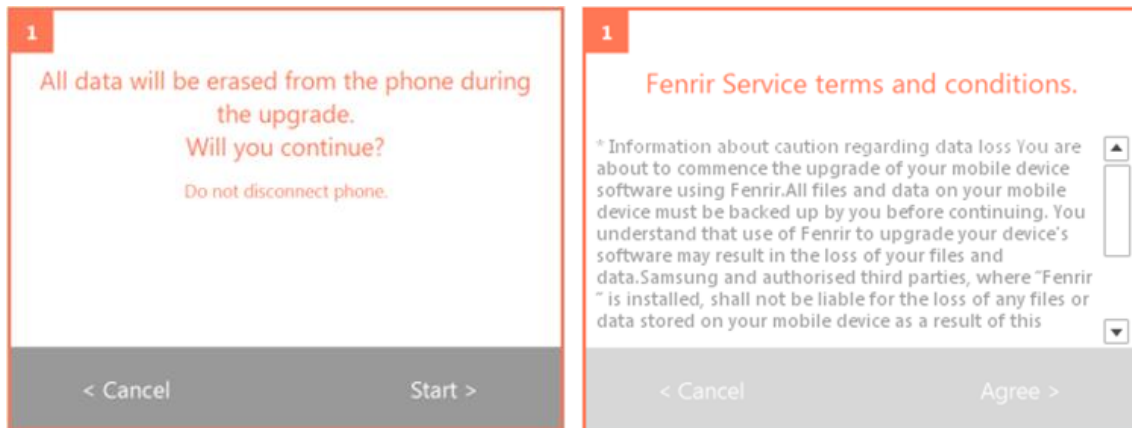


6. Level 1 Repair

6) Once device is detected, you will be presented with below screen. To update S/W, select “S/W Update” or to exit select “SVC Connection”. If you select “SVC Connection”, only Fenrir connection history (record) will be stored in the FUS server to support warranty validation. (This is known as “Service Connection” history)

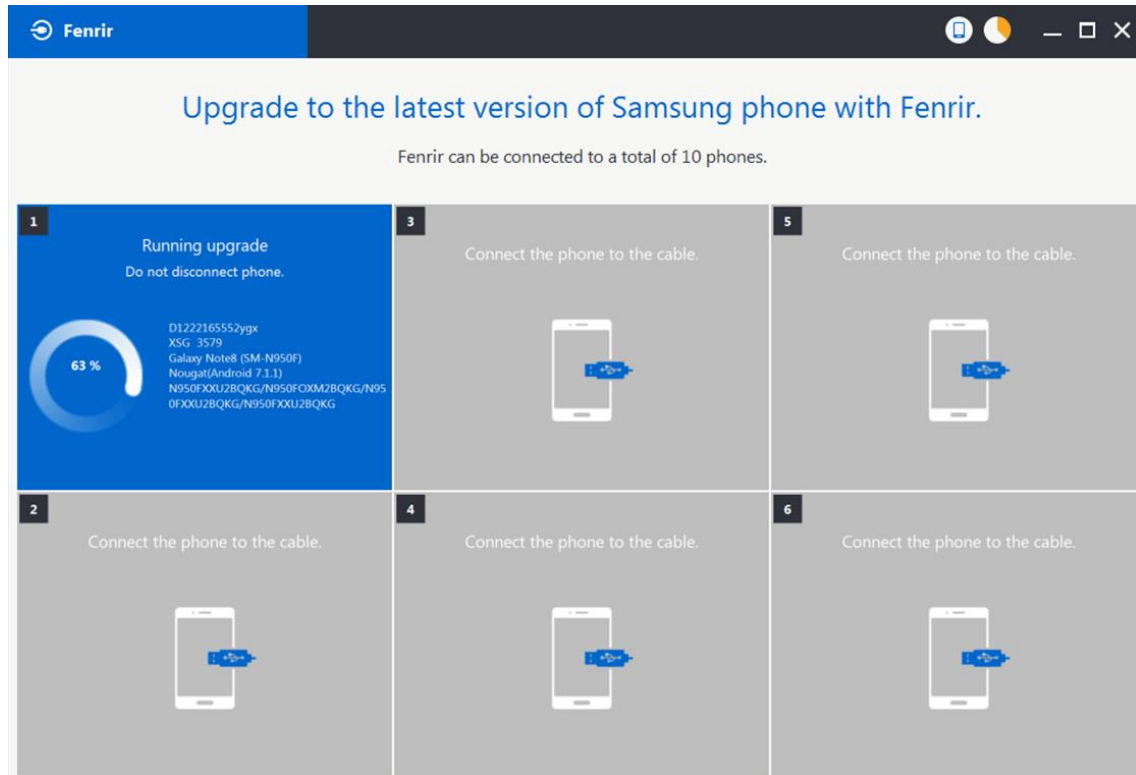


7) Once Fenrir starts, application will display the below screen. And select the Start button & Agree button.

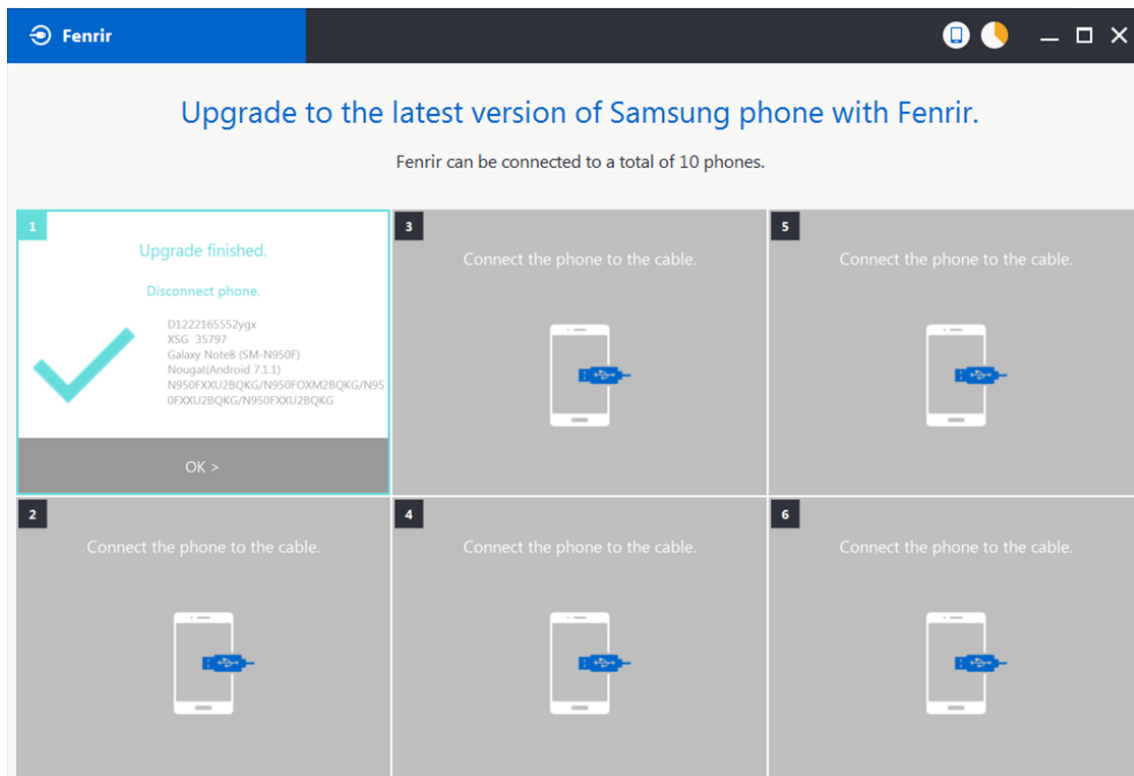


6. Level 1 Repair

8) The status circle increases as the update installs. The update process takes approximately 5-10 minutes to complete. Do not disconnect the device from USB during processing.



9) Once complete, application will present the below screen indicating update complete. Click Ok and detach device from USB.



6. Level 1 Repair

6-2. How to use 'Odin' program

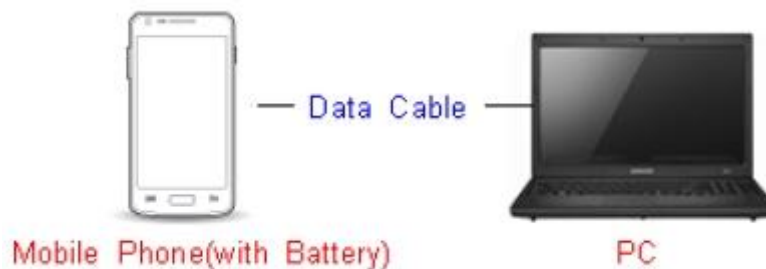
※ S/W Update via Fenrir is mandatory.

Below is the method to use 'Odin' program in any specific case.

6-2-1. Preparation

- Installation program : **Odin3 v3.13.2.exe or above**
- Mobile Phone
- Data Cable
- S/W Binary files (downloaded from GSPN)

※ Settings

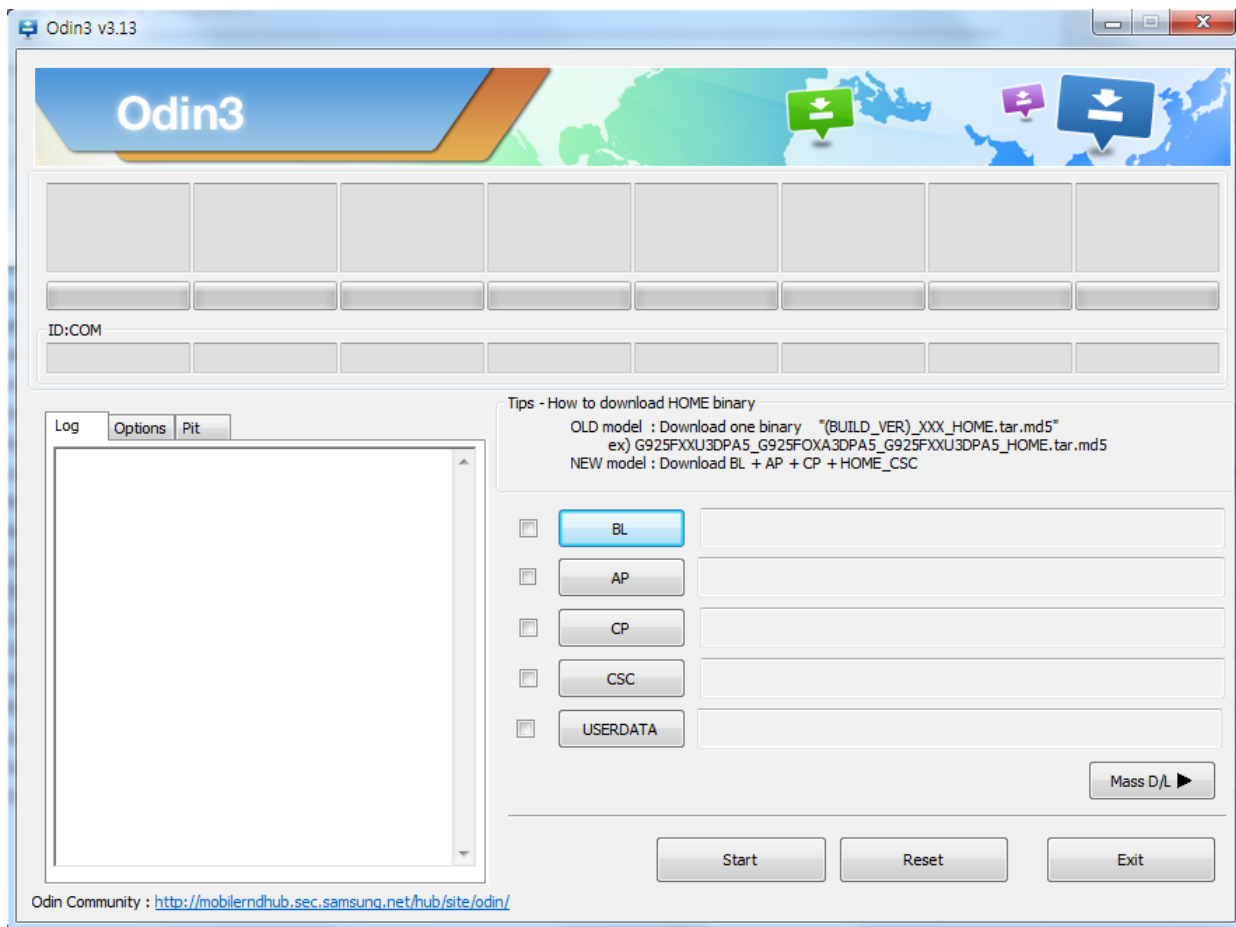


Data Cable : GH39-01710D

6. Level 1 Repair

6-2-2. S/W Installation Program (Downloader program)

Open up the S/W Installation Program by executing the "**Odin3 v3.13.2.exe**"

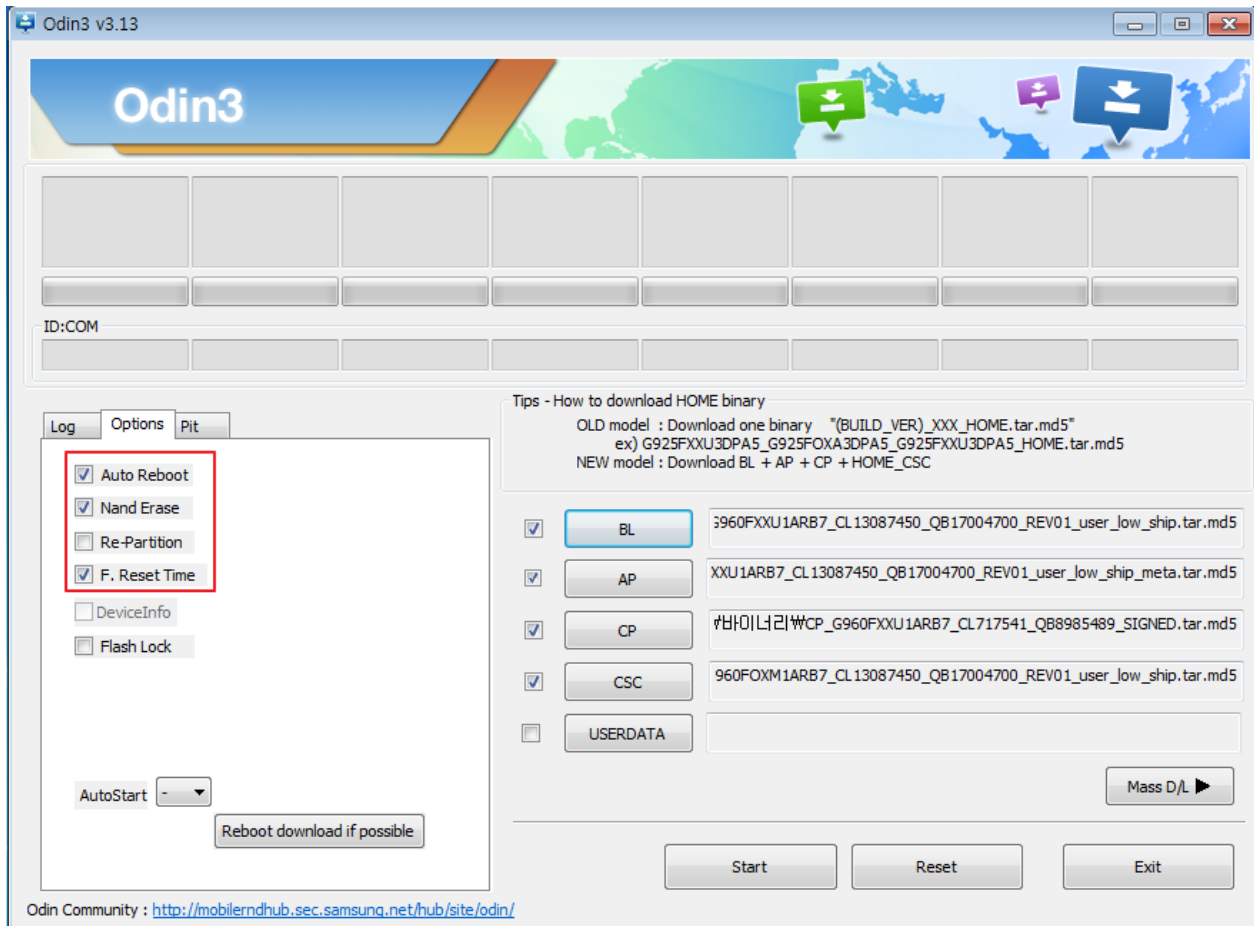


6. Level 1 Repair

1. Enable the check mark by click on the following options

- Check Auto Reboot, F. Reset Time, Nand Erase
- Check BL, AP, CP, CSC Files

* Note : "Odin v3.13.2 or above" checks MD5 checksum just after file selection.



6. Level 1 Repair

2. Enter into Download Mode

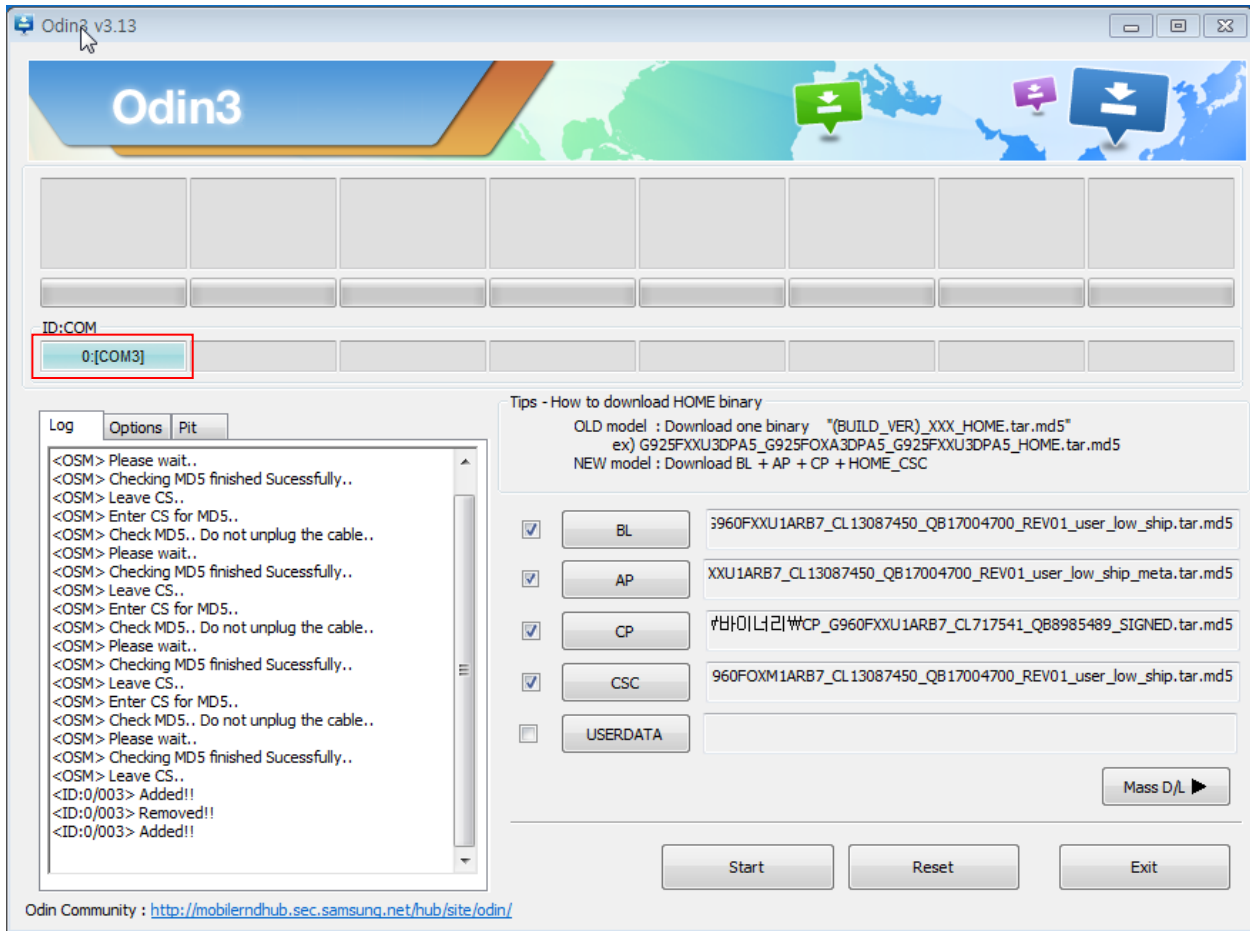
- Press Volume Down button and Volume Up button simultaneously.
- Please connect USB cable.
- Finally, Press Volume up button to Enter into Download mode.



6. Level 1 Repair

3. Connect the device to PC via Data Cable.

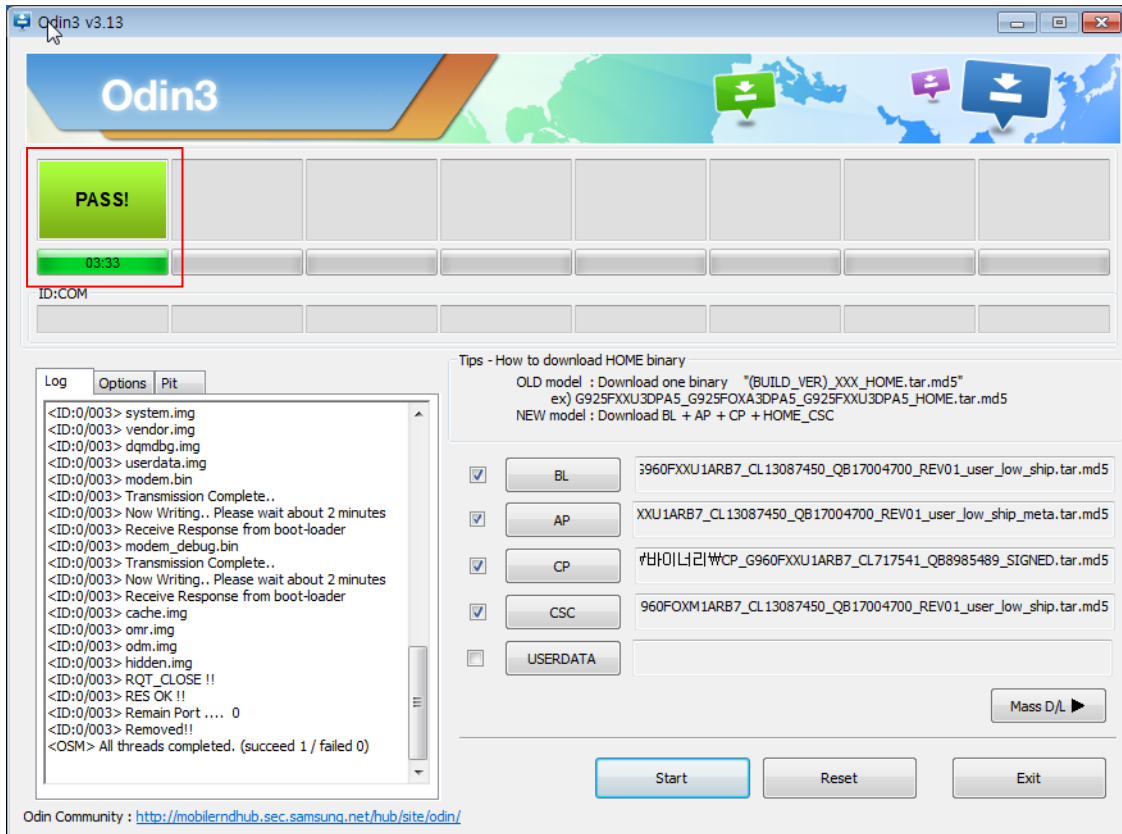
Make sure that the one of communication ports [ID:COM] box is highlighted in sky blue. The device is now connected with the PC and ready to download the binary files in it.



6. Level 1 Repair

4. Start downloading the binary files into the device by clicking Start button on the screen.

The green colored "PASS!" sign will appear on the upper-left box if the binary files have been successfully downloaded into the device.



5. Disconnect the device from the Data cable.

6. Once the device boots up, you can check the version of the binary file or name by pressing the following code in sequence; ***#1234#**

You can perform Factory data Reset by Settings → General Management → Reset

※ Caution. Never disconnect during the S/W downloading.

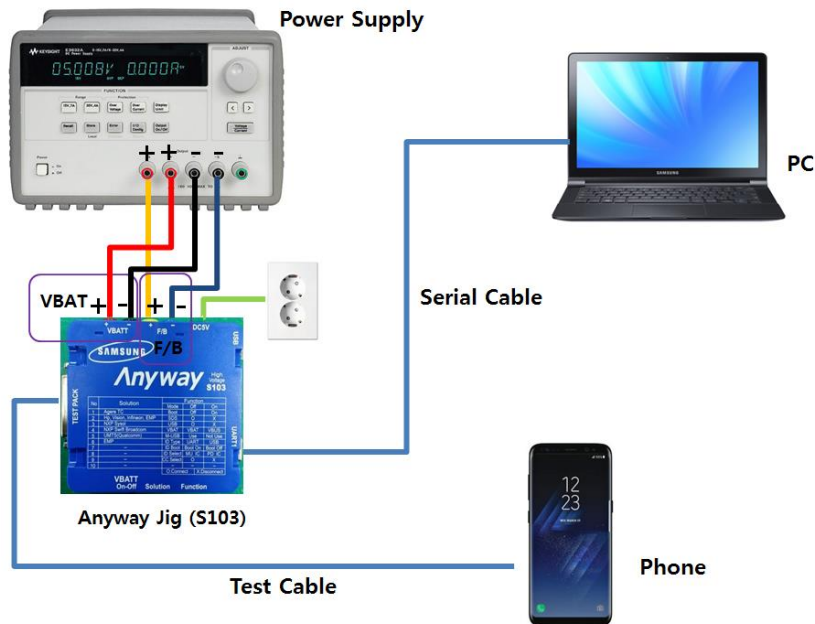
6. Level 1 Repair

6-3. IMEI writing

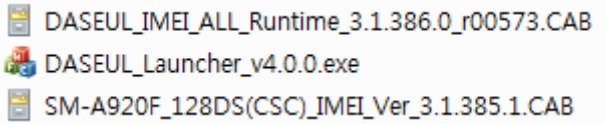
6-3-1. Preparation

- New IMEI writing Program has been released.
- Supported Model : Models which CAB files are uploaded on HHPsvc INI File category, instead of ini file.
- Refer to below IMEI writing procedure.

- H/W




- S/W

① Library Install	To use Daseul, library files should be installed. Refer to SVC Bulletin “(11-82) Daseul (New IMEI writing Program) Library Install guide_rev1.0”
② Launcher	DASEUL_Launcher_v4.0.0 or higher -Uploaded on HHPsvc Notice
③ Runtime File	1. DASEUL_IMEI_ALL_Runtime_3.1.386.0_r00573.CAB or higher -Uploaded on HHPsvc Notice 2. Make 'ModelName' folder at the same position with launcher & Runtime file. 
④ Model File	Copy Model File under the 'SM-G8870' folder

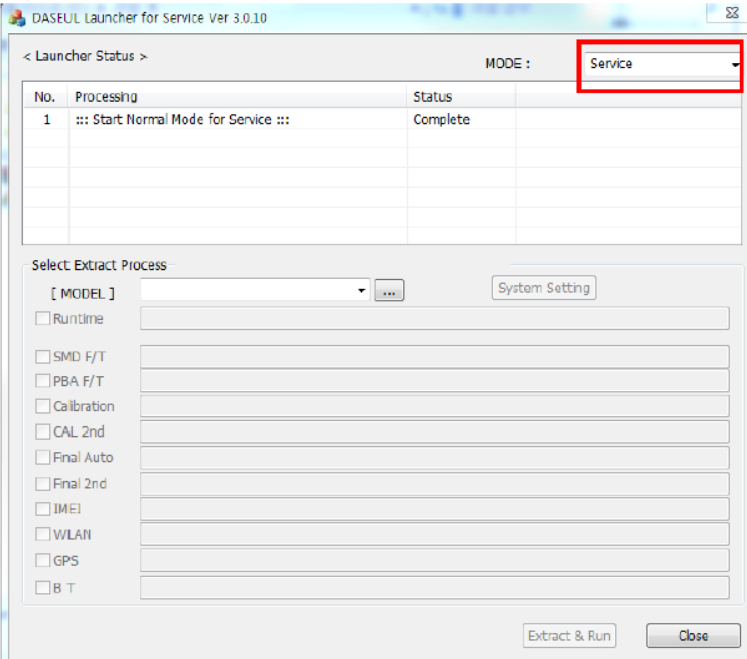
6. Level 1 Repair

6-3-2. IMEI writing Process

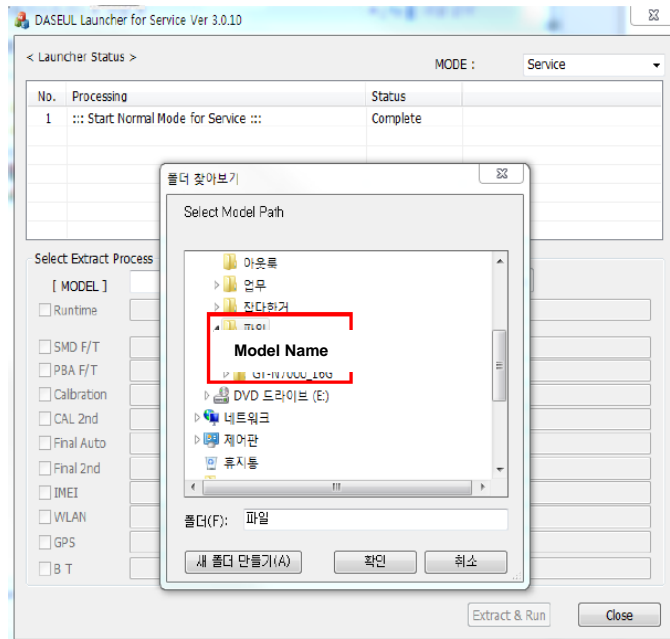
1. Run DASEUL_Launcher_v4.0.0

 DASEUL_Launcher_v4.0.0.exe

2. Select Service Mode

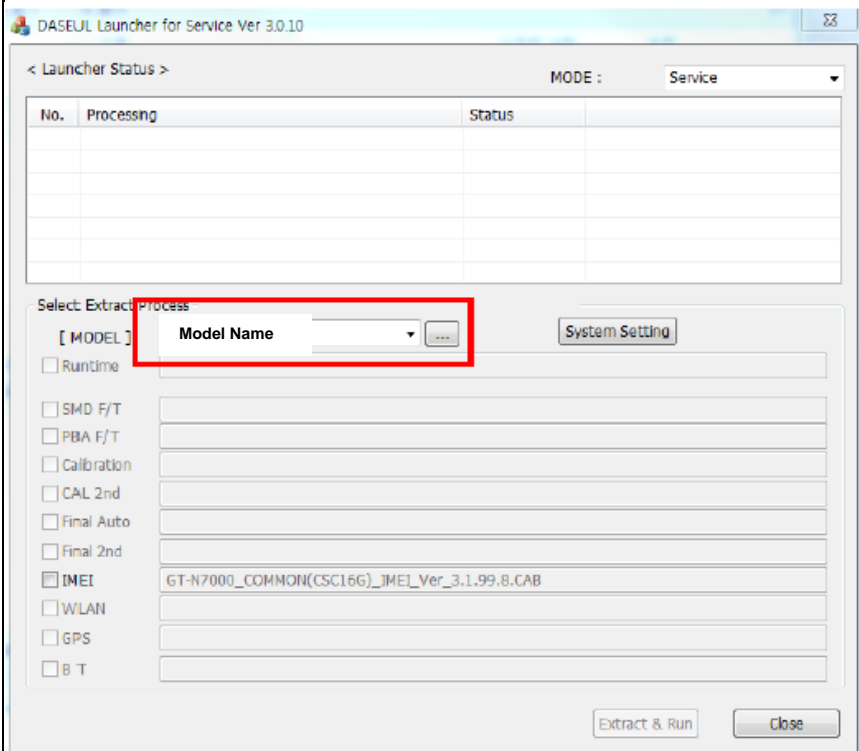


3. Click and Select folder where the Launcher exists



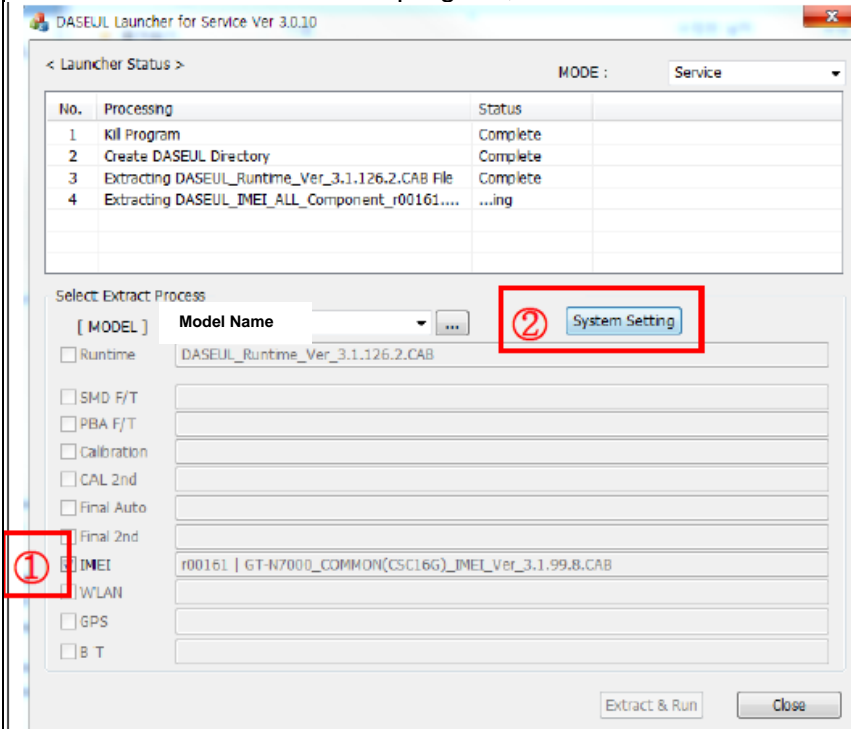
6. Level 1 Repair

4. Select Model



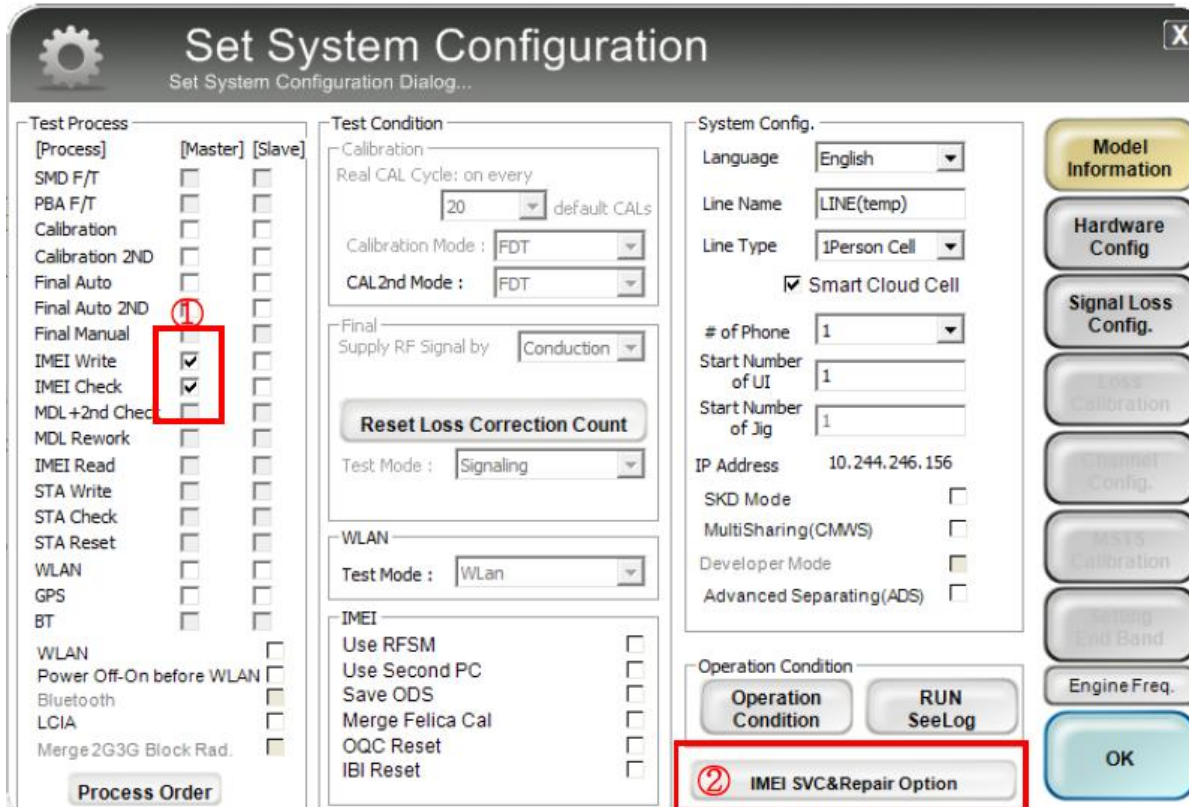
5. Check IMEI and click System Setting

※ Once you setup the setting, you don't have to do it again, unless there is change. From second run of the IMEI program, check IMEI and click Extract & Run.



6. Level 1 Repair

6. Check IMEI Write / IMEI Check and click IMEI SVC & Repair Option.



Set System Configuration
Set System Configuration Dialog...

Test Process

[Process]	[Master]	[Slave]
SMD F/T	<input type="checkbox"/>	<input type="checkbox"/>
PBA F/T	<input type="checkbox"/>	<input type="checkbox"/>
Calibration	<input type="checkbox"/>	<input type="checkbox"/>
Calibration 2ND	<input type="checkbox"/>	<input type="checkbox"/>
Final Auto	<input type="checkbox"/>	<input type="checkbox"/>
Final Auto 2ND	<input type="checkbox"/>	<input type="checkbox"/>
Final Manual	<input type="checkbox"/>	<input type="checkbox"/>
IMEI Write	<input checked="" type="checkbox"/>	<input type="checkbox"/>
IMEI Check	<input checked="" type="checkbox"/>	<input type="checkbox"/>
MDL +2nd Check	<input type="checkbox"/>	<input type="checkbox"/>
MDL Rework	<input type="checkbox"/>	<input type="checkbox"/>
IMEI Read	<input type="checkbox"/>	<input type="checkbox"/>
STA Write	<input type="checkbox"/>	<input type="checkbox"/>
STA Check	<input type="checkbox"/>	<input type="checkbox"/>
STA Reset	<input type="checkbox"/>	<input type="checkbox"/>
WLAN	<input type="checkbox"/>	<input type="checkbox"/>
GPS	<input type="checkbox"/>	<input type="checkbox"/>
BT	<input type="checkbox"/>	<input type="checkbox"/>
WLAN	<input type="checkbox"/>	<input type="checkbox"/>
Power Off-On before WLAN	<input type="checkbox"/>	<input type="checkbox"/>
Bluetooth	<input type="checkbox"/>	<input type="checkbox"/>
LCIA	<input type="checkbox"/>	<input type="checkbox"/>
Merge 2G3G Block Rad.	<input type="checkbox"/>	<input type="checkbox"/>

Test Condition

Calibration
Real CAL Cycle: on every default CALs

Calibration Mode :

CAL2nd Mode :

Final
Supply RF Signal by :

Reset Loss Correction Count

Test Mode :

WLAN
Test Mode :

IMEI
Use RFSM
Use Second PC
Save ODS
Merge Felica Cal
OQC Reset
IBI Reset

System Config.

Language :

Line Name :

Line Type :

Smart Cloud Cell

of Phone :

Start Number of UI :

Start Number of Jig :

IP Address : 10.244.246.156

SKD Mode

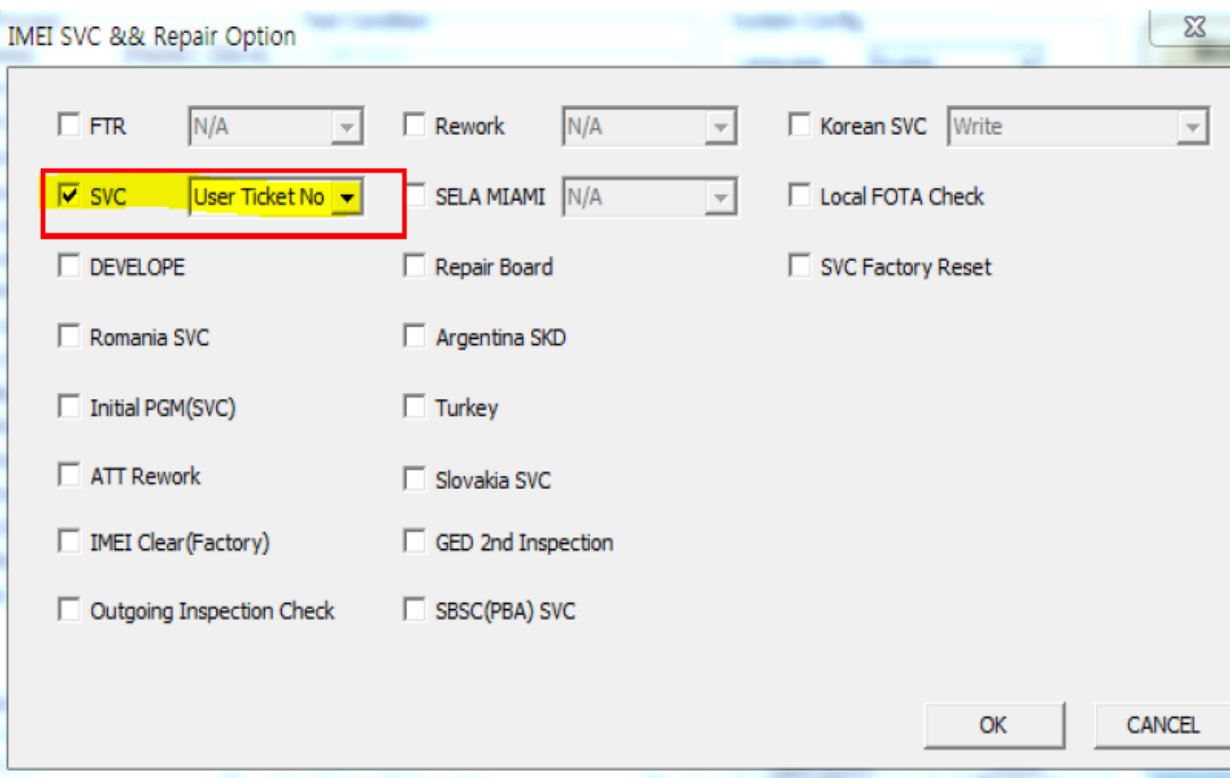
MultiSharing(CMWS)

Developer Mode

Advanced Separating(ADS)

Operation Condition

7. Check 'SVC , User Ticket No' and click OK



IMEI SVC & Repair Option

FTR Rework Korean SVC

SVC SELA MIAMI Local FOTA Check

DEVELOPE Repair Board SVC Factory Reset

Romania SVC Argentina SKD

Initial PGM(SVC) Turkey

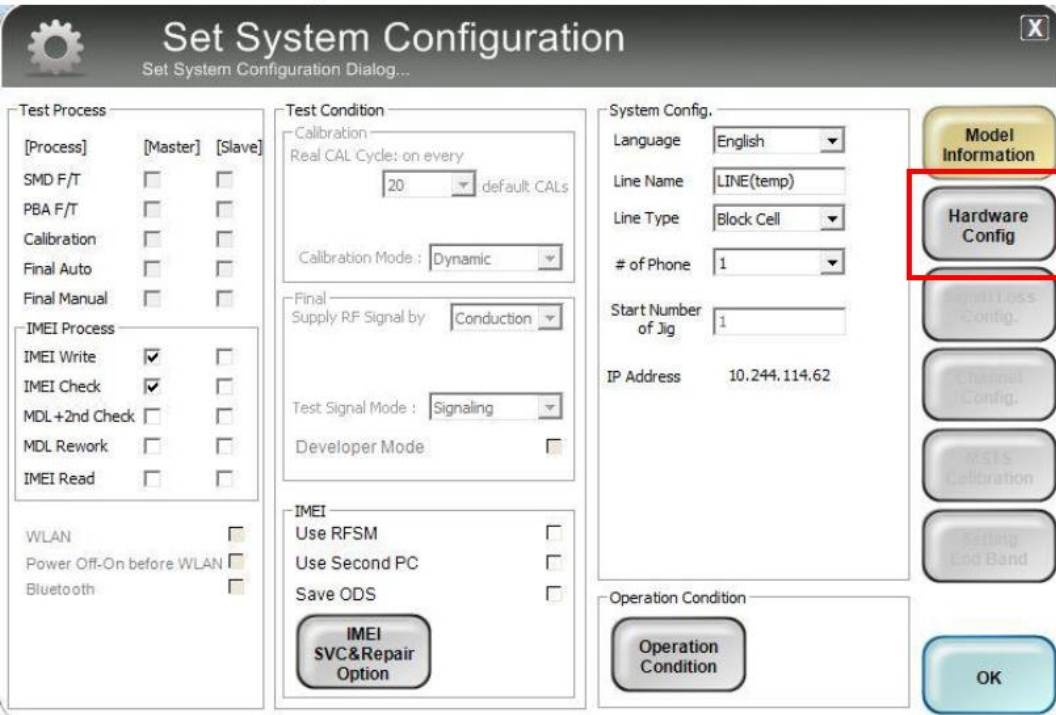
ATT Rework Slovakia SVC

IMEI Clear(Factory) GED 2nd Inspection

Outgoing Inspection Check SBSC(PBA) SVC

6. Level 1 Repair

8. Click 'Hardware Config'



Set System Configuration
Set System Configuration Dialog...

Test Process

[Process]	[Master]	[Slave]
SMD F/T	<input type="checkbox"/>	<input type="checkbox"/>
PBA F/T	<input type="checkbox"/>	<input type="checkbox"/>
Calibration	<input type="checkbox"/>	<input type="checkbox"/>
Final Auto	<input type="checkbox"/>	<input type="checkbox"/>
Final Manual	<input type="checkbox"/>	<input type="checkbox"/>

IMEI Process

IMEI Write	<input checked="" type="checkbox"/>	<input type="checkbox"/>
IMEI Check	<input checked="" type="checkbox"/>	<input type="checkbox"/>
MDL+2nd Check	<input type="checkbox"/>	<input type="checkbox"/>
MDL Rework	<input type="checkbox"/>	<input type="checkbox"/>
IMEI Read	<input type="checkbox"/>	<input type="checkbox"/>

WLAN
Power Off-On before WLAN
Bluetooth

Test Condition

Calibration
Real CAL Cycle: on every
20 default CALs
Calibration Mode:

Final
Supply RF Signal by:

Test Signal Mode:

Developer Mode

IMEI

Use RFSM
Use Second PC
Save ODS

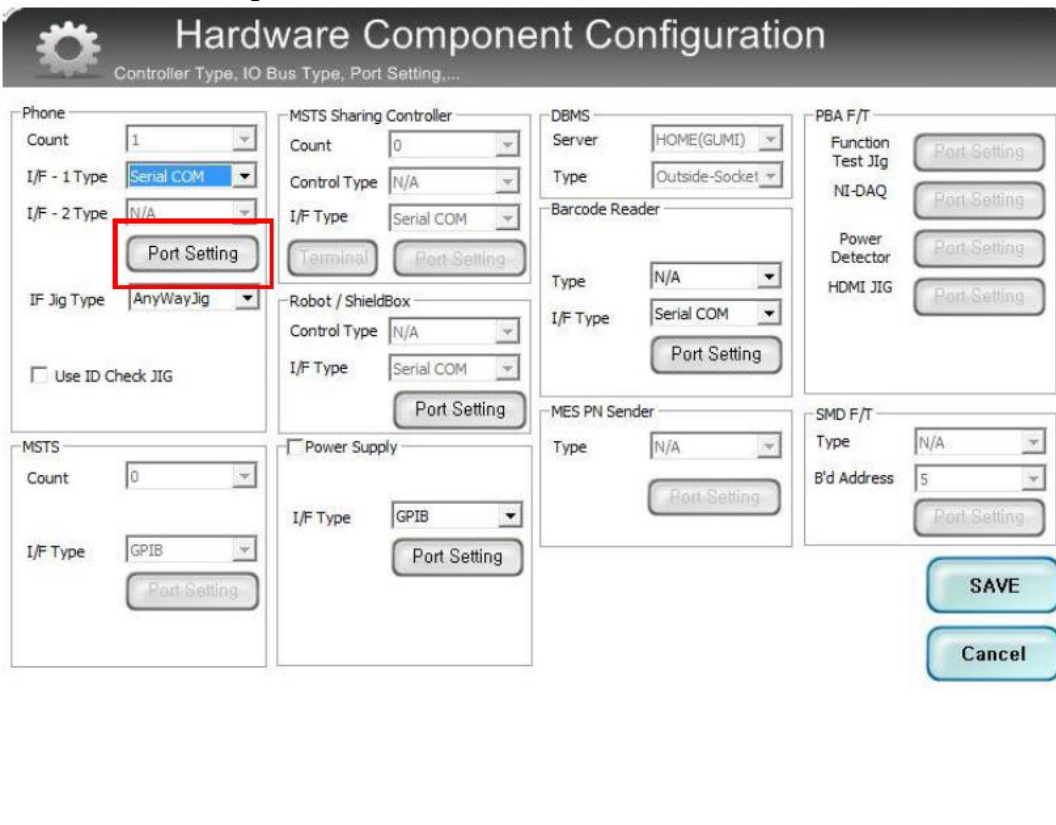
System Config.

Language:
Line Name:
Line Type:
of Phone:
Start Number of Jig:
IP Address: 10.244.114.62

Operation Condition

Buttons: Model Information, Hardware Config, Signal Loss Config, Channel Config, WTS Calibration, Setting End Band, OK, IMEI SVC&Repair Option, Operation Condition

9. Click 'Port Setting'



Hardware Component Configuration
Controller Type, IO Bus Type, Port Setting,...

Phone

Count:
I/F - 1 Type:
I/F - 2 Type:
IF Jig Type:
 Use ID Check JIG

MSTS Sharing Controller

Count:
Control Type:
I/F Type:
Buttons: Terminal, Port Setting

Robot / ShieldBox

Control Type:
I/F Type:
Button: Port Setting

Power Supply

I/F Type:
Button: Port Setting

DBMS

Server:
Type:

Barcode Reader

Type:
I/F Type:
Button: Port Setting

MES PN Sender

Type:
Button: Port Setting

PBA F/T

Function Test Jig:
NI-DAQ:
Power Detector:
HDMI JIG:

MSTS

Count:
I/F Type:
Button: Port Setting

SMD F/T

Type:
B'd Address:
Button: Port Setting

Buttons: SAVE, Cancel

6. Level 1 Repair

10. Select Port Number and SAVE

Set IO BUS Configuration

Phone IO Bus Setting

Common

BaudRate: 115200
Data Bit: 8
Parity: No
Stop Bit: 1

No	Port #1
1	1

SAVE
Cancel

11. Click OK to proceed

Set System Configuration

Set System Configuration Dialog...

Test Process

[Process]	[Master]	[Slave]
SMD F/T	<input type="checkbox"/>	<input type="checkbox"/>
PBA F/T	<input type="checkbox"/>	<input type="checkbox"/>
Calibration	<input type="checkbox"/>	<input type="checkbox"/>
Final Auto	<input type="checkbox"/>	<input type="checkbox"/>
Final Manual	<input type="checkbox"/>	<input type="checkbox"/>

IMEI Process

IMEI Write	<input checked="" type="checkbox"/>	<input type="checkbox"/>
IMEI Check	<input checked="" type="checkbox"/>	<input type="checkbox"/>
MDL +2nd Check	<input type="checkbox"/>	<input type="checkbox"/>
MDL Rework	<input type="checkbox"/>	<input type="checkbox"/>
IMEI Read	<input type="checkbox"/>	<input type="checkbox"/>

WLAN
Power Off-On before WLAN
Bluetooth

Test Condition

Calibration
Real CAL Cycle: on every
20 default CALs
Calibration Mode: Dynamic

Final
Supply RF Signal by: Conduction

Test Signal Mode: Signaling
Developer Mode

IMEI
Use RFSM
Use Second PC
Save ODS

IMEI SVC&Repair Option

System Config.

Language: English
Line Name: LINE(temp)
Line Type: Block Cell
of Phone: 1
Start Number of Jig: 1
IP Address: 10.244.114.62

Operation Condition

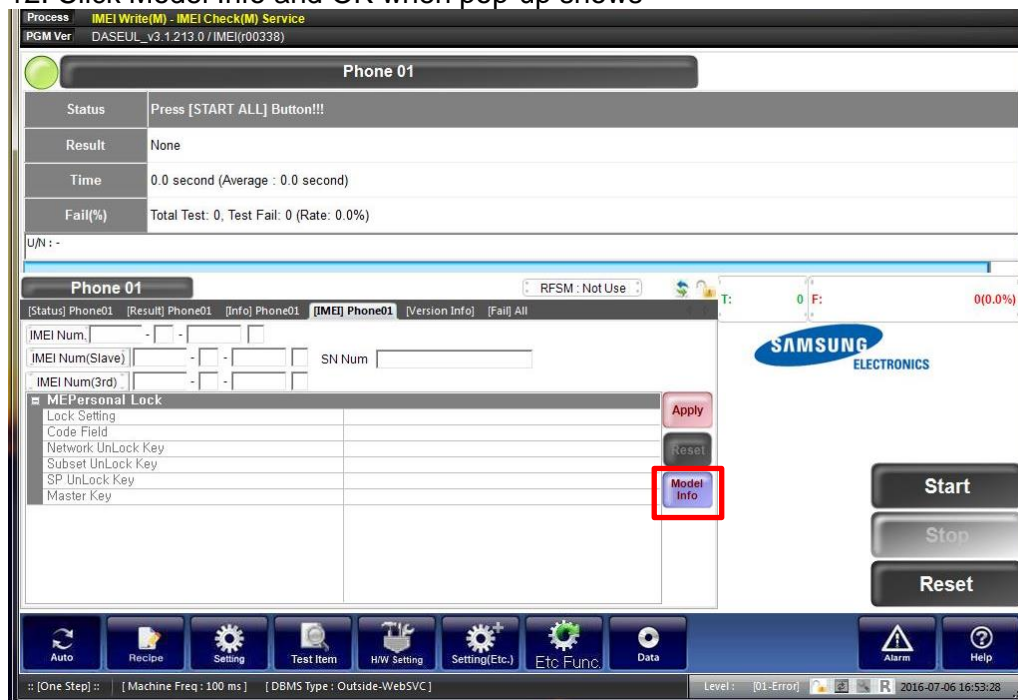
Operation Condition

Model Information
Hardware Config
Signal Loss Config.
Channel Config.
PATS Calibration
Spring End Band

OK

6. Level 1 Repair

12. Click Model Info and OK when pop-up shows



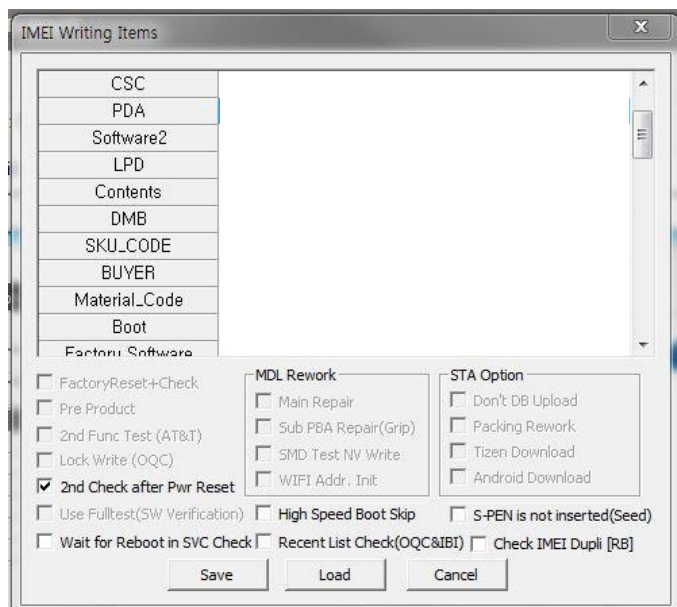
13. Click OK



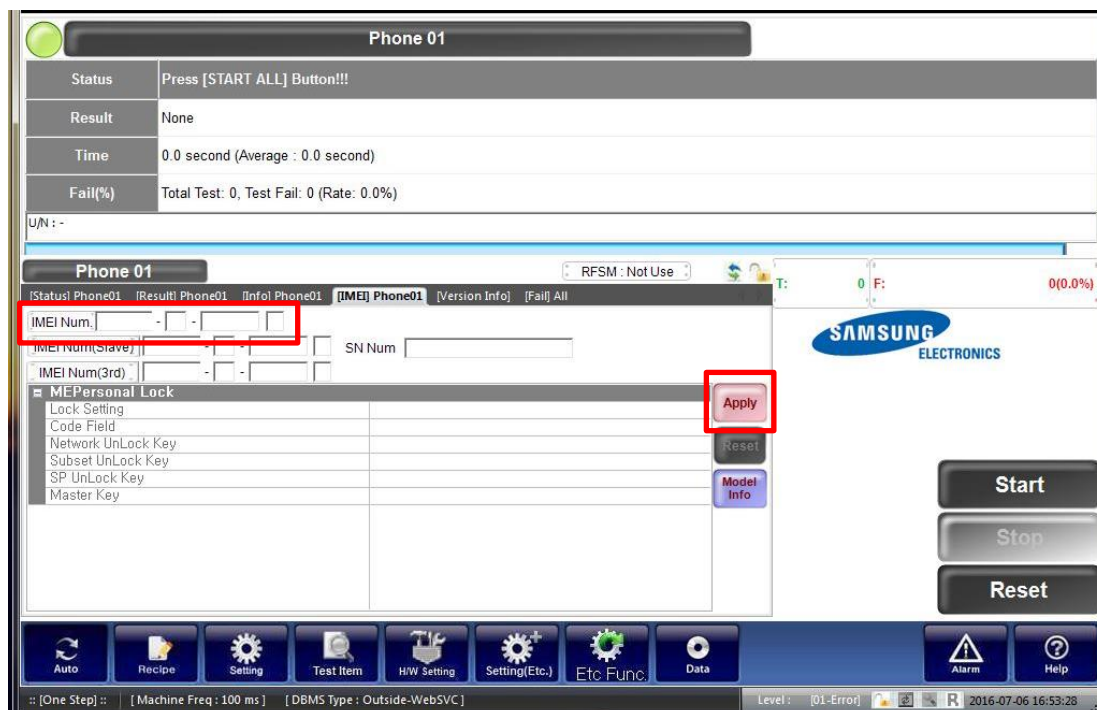
6. Level 1 Repair

14. Input SKU_CODE and BUYER, then click Save button.

※ Refer to HHPsvc→IMEI Review to check SKU Code and buyer

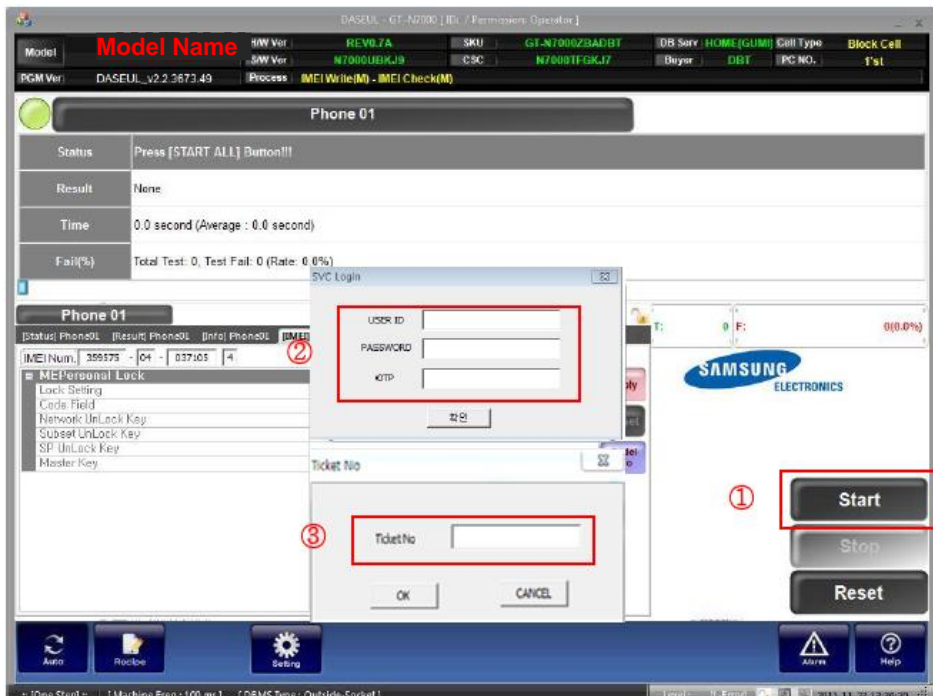


15. Input IMEI Number and click Apply



6. Level 1 Repair

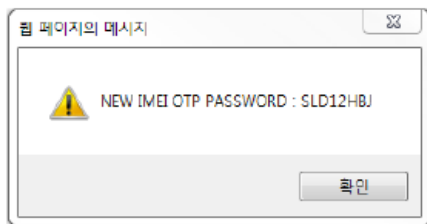
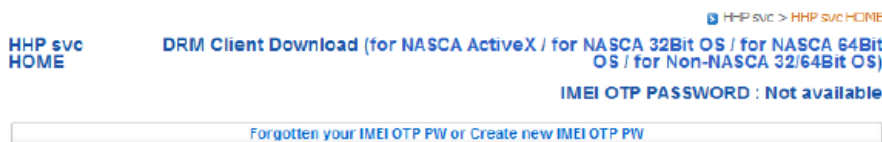
16. ① Click Start → ② Input IMEI writing ID and Password & OTP → ③ Input Ticket No



※ OTP(One time Password) : OTP is valid for 6 hours.

After that, you can get new OTP by click the “Forgotten your IMEI OTP PW or Create new IMEI OTP PW” button.

☞ OTP Location : GSPN → Knowledge → HHP svc → Home

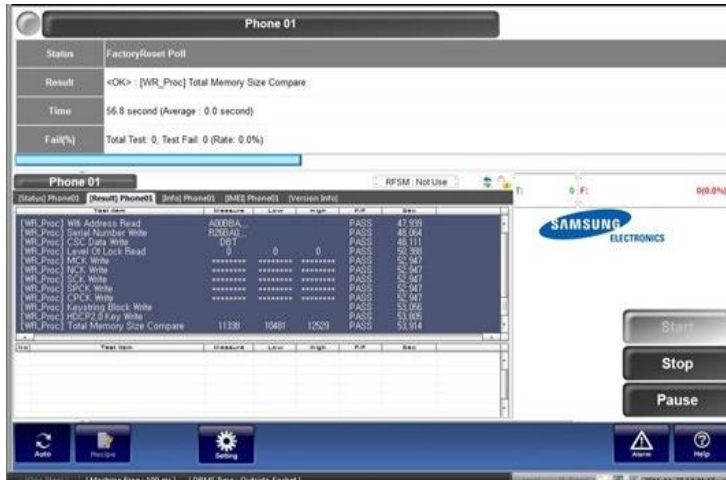


6. Level 1 Repair

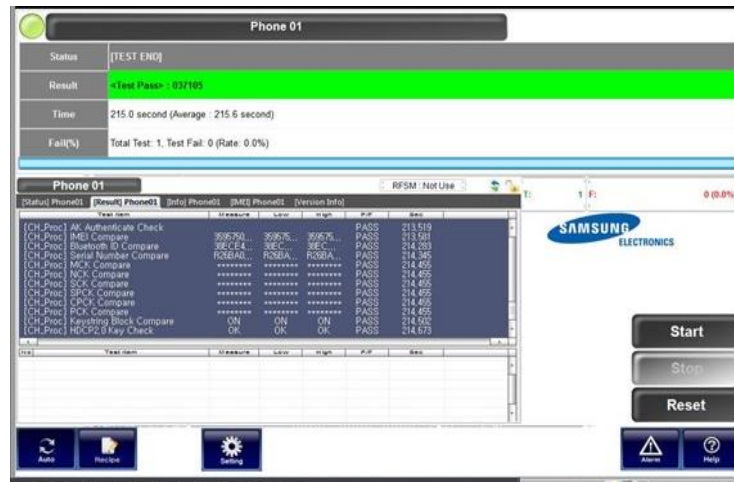
17. Connect the phone to Anyway JIG

- ✳ When you connect the phone, the phone should be turned off.
After connecting the phone, the phone will be booted automatically.

18. IMEI Writing Proceeding



19. IMEI Writing Success



9. Reference Abbreviation

Reference Abbreviation

- **AAC**: Advanced Audio Coding.
- **AVC** : Advanced Video Coding.
- **BER** : Bit Error Rate
- **BPSK**: Binary Phase Shift Keying
- **CA** : Conditional Access
- **CDM** : Code Division Multiplexing
- **C/I** : Carrier to Interference
- **DMB** : Digital Multimedia Broadcasting
- **EN** : European Standard
- **ES** : Elementary Stream
- **ETSI**: European Telecommunications Standards Institute
- **MPEG**: Moving Picture Experts Group
- **PN** : Pseudo-random Noise
- **PS** : Pilot Symbol
- **QPSK**: Quadrature Phase Shift Keying
- **RS** : Reed-Solomon
- **SI** : Service Information
- **TDM** : Time Division Multiplexing
- **TS** : Transport Stream