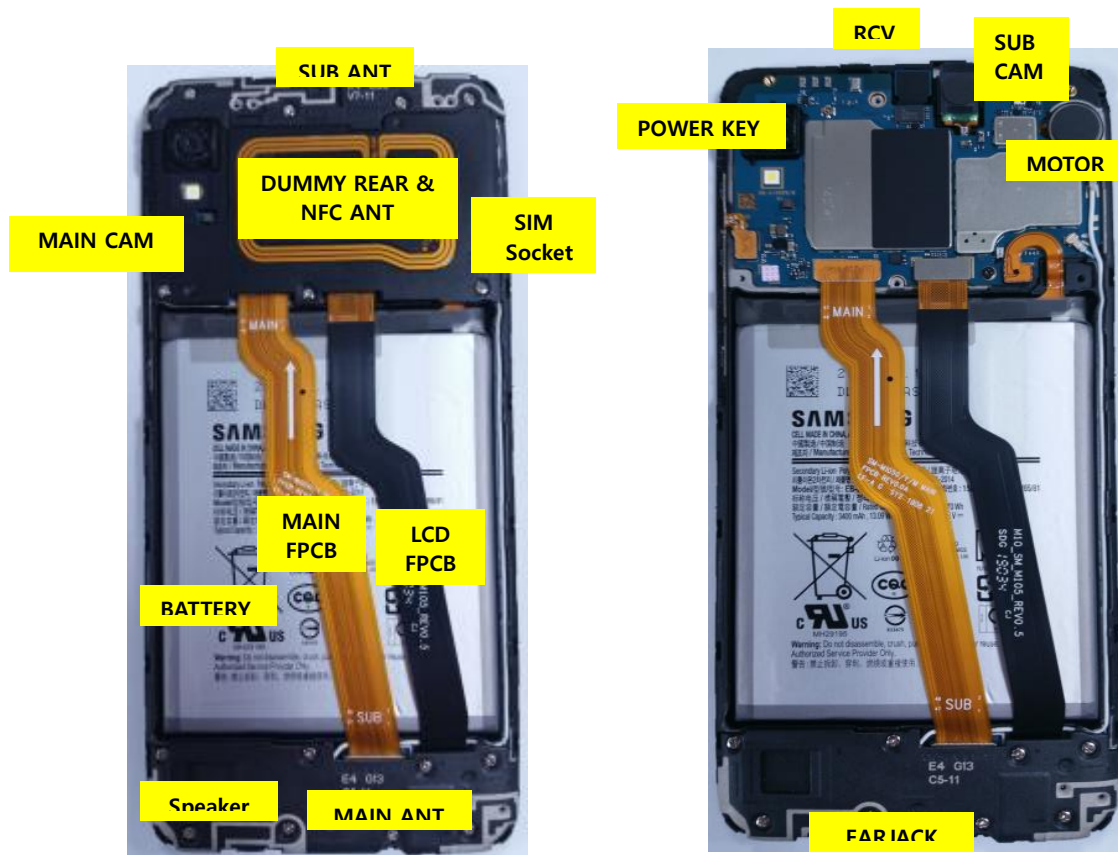


## 7. Level 2 Repair

### 7-1. Components on the Rear Case



## 7. Level 2 Repair

### 7-2. Pre-requisite

	
<b>Tweezers / Disass'y Stick / Screw Driver</b>	<b>Anti-static Gloves</b>
	
<b>Anti-static Mat</b>	<b>Hot Plate</b>
	
<b>A OCTA Disassembly Holder</b>	<b>OCTA Disassembly Upper</b>
	
<b>Ethyl Alcohol</b>	<b>Cotton Swab</b>

## 7. Level 2 Repair

### 7-3. Parts which must be changed after repair

BOM description & part code	Image	Remarks
<b>A/S-SVC SUB PBA TAPE</b> <b>[GH81-16626A]</b>		<b>Replace for MAIN PBA SUB PBA</b>
<b>A/S-SVC TAPE MAIN CAM FLANGE</b> <b>[GH81-16640A]</b>		

## 7. Level 2 Repair

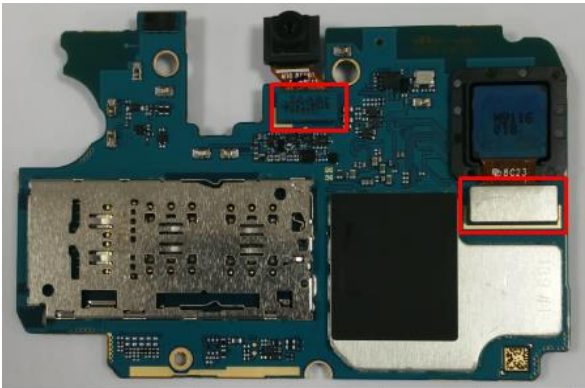
### 7-4. Disassembly

<div data-bbox="97 300 177 376">1</div> <div data-bbox="193 300 762 450"> <p>1) Disassemble the SIM tray. 2) Detach the Rear disassembling hook. (sequence: right → left → top → bottom )</p> </div> <div data-bbox="140 517 716 938"> </div>	<div data-bbox="770 300 850 376">2</div> <div data-bbox="866 300 1461 421"> <p>1) Unscrew 7 Point. 2) Disassemble SUB ANT 3) Disassemble dummy Rear.</p> </div> <div data-bbox="778 427 1514 938"> </div>
<p>※ Caution Be care of scratch.</p>	<p>※ Caution Be care of scratch.</p>
<div data-bbox="97 1048 177 1124">3</div> <div data-bbox="193 1048 762 1189"> <p>Disassemble 4 Point connector and 2 Point coaxial cable connector of PBA.</p> </div> <div data-bbox="132 1274 740 1682"> </div>	<div data-bbox="770 1048 850 1124">4</div> <div data-bbox="866 1048 1461 1169"> <p>1) Unscrew 1 Point. 2) Detach the PBA.</p> </div> <div data-bbox="860 1328 1423 1704"> </div>
<p>※ Caution Be care of connector damage.</p>	<p>※ Caution Be care of scratch.</p>

## 7. Level 2 Repair

5

Disassemble the MAIN CAM(2 connector) and SUB CAM.

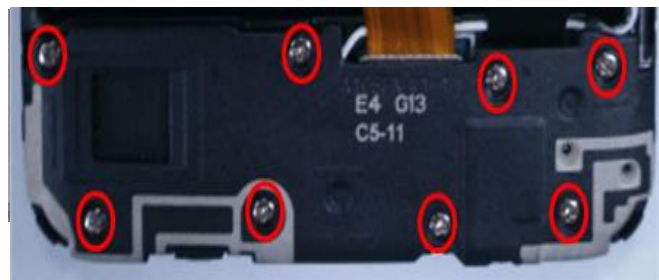


※ Caution

- 1) Be care of scratch.
- 2) Be care of connector damage.
- 3) Be careful not to damage the PBA.

6

- 1) Unscrew PBA 8 points.
- 2) Detach MAIN ANT.



※ Caution

Be care of scratch.

7

- 1) Disassemble 1 connector 2 coaxial cable connector.
- 2) Detach the SUB PBA.



※ Caution

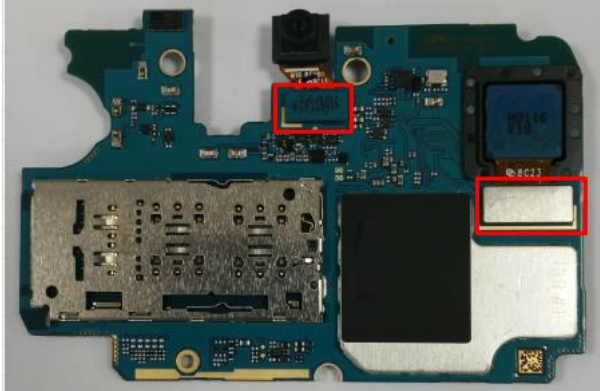
- 1) Be care of scratch.
- 2) Be care of connector/cable damage.
- 3) Be care of damage of PBA.

## 7. Level 2 Repair

### 7-5. Assembly

1

- 1) Assemble the MAIN CAM.
- 2) Assemble the SUB CAM.



※ Caution

Be care of PBA damage.

2

- 1) Attach SUB PBA on Front.
- 2) Assemble the MAIN FPCB and 2 coaxial cable.
- 3) Line coaxial cable up following the Front.

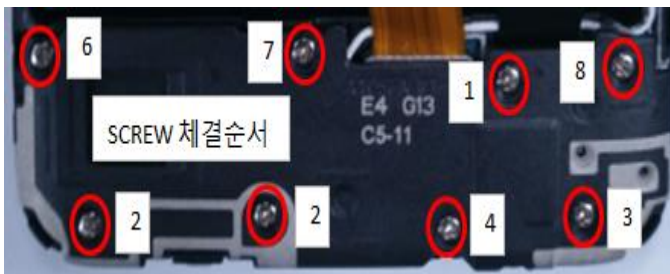


※ Caution

Be care of SUB PBA damage.

3

- Screw 8 point in SUB PBA.
- \* Torque Value : 1.1kgfcm
  - \* Size : M1.4 \* L3.0 (6001-003226)



※ Caution

- 1) Be care of FPCB damage and tilt.
- 2) Be care of press power/time.

4

- 1) Attach the PBA
- 2) Assemble 4 point connector and 2 point coaxial cable connector.



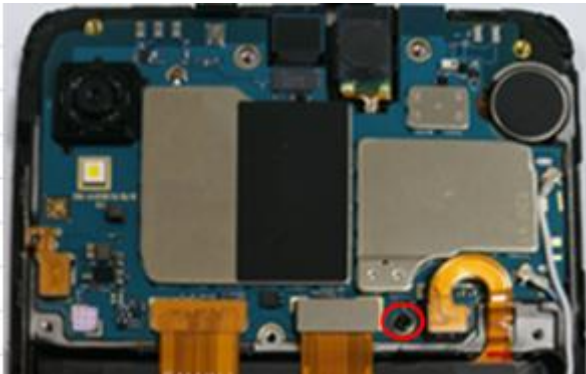
※ Caution

Be care of PBA damage.

## 7. Level 2 Repair

5

Screw insertion 1 Point.  
 \* Torque Value :  $0.95 \pm 0.06$ kgfcm  
 \* Size : M1.4 \* L2.0 (6001-001695)



6

Assemble the dummy REAR in sequence.  
 ( 3 point Hook)



※ Caution

- 1) Be care of chip damage nearby screw point.
- 2) Be care of press power/time.

※ Caution

- Be care of scratch and dummy REAR damage.

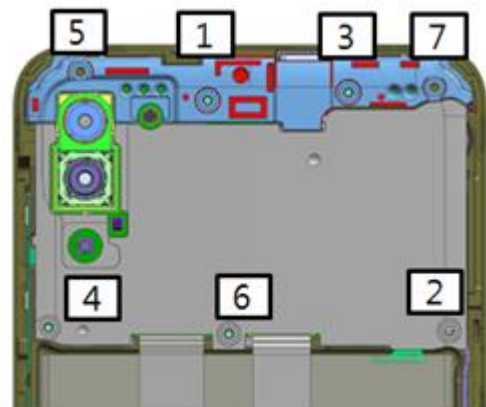
7

Assemble SUB ANT in sequence.  
 ( 2 point Hook)



8

Screw insertion 7 Point.  
 \* Torque Value :  $1.1 \pm 0.1$ kgfcm  
 \* Size : M1.4 \* L3.0 (6001-003226, silver)



※ Caution

- Be care of scratch SUB ANT damage.

※ Caution

- 1) Be care of dummy Rear and SUB ANT damage.
- 2) Be care of press power/time.

## 7. Level 2 Repair

9

1) Assemble the REAR.

\* Bottom → Left upside → Top → right upside .

2) Check the volume key and power key.



※ **Caution**

Do not press a S-Pen cover over 5 seconds to prevent display damage.