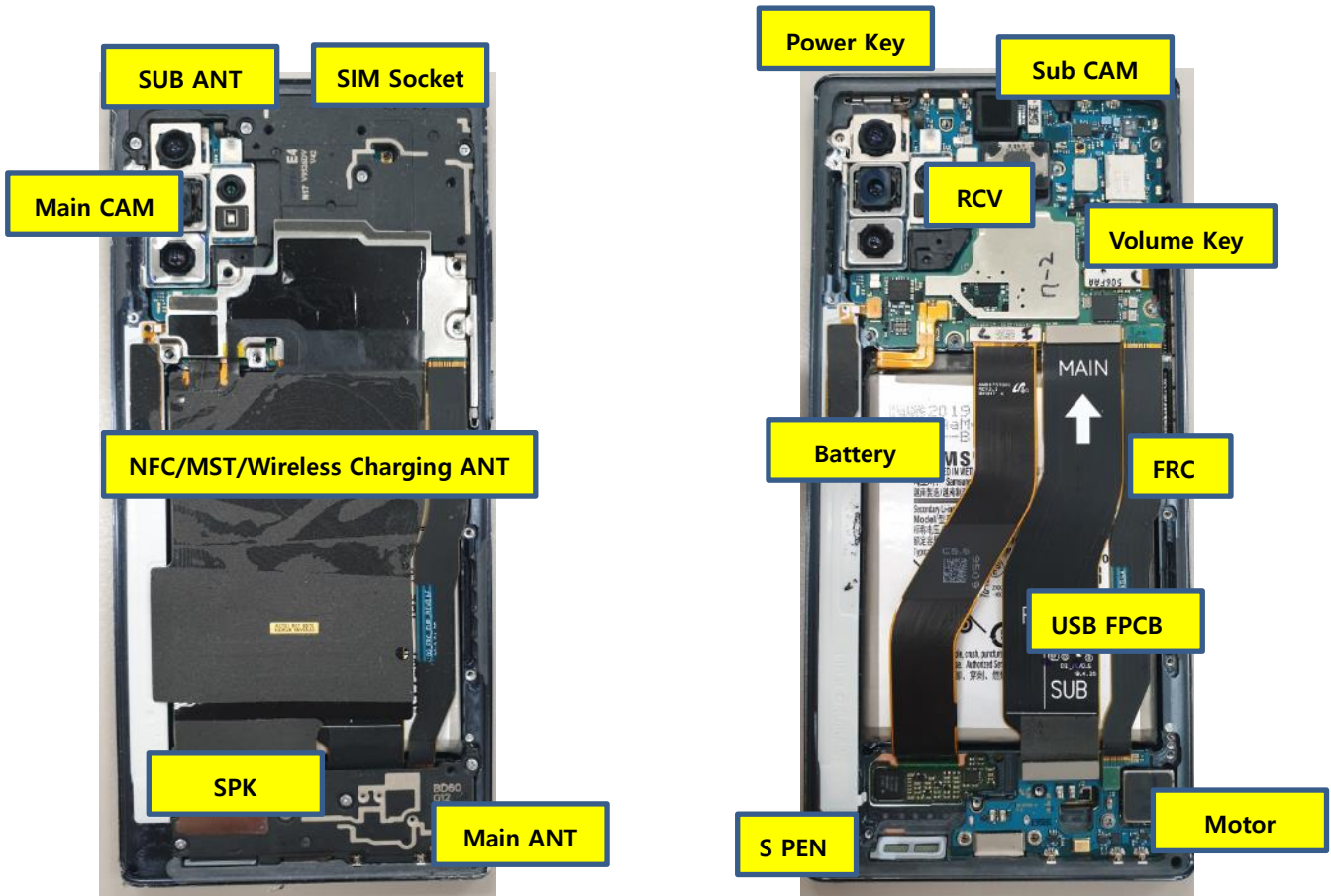


7. Level 2 Repair

7-1. Components on the Rear Case



7. Level 2 Repair

7-2. Pre-requisite

	
Tweezers / Disass'y Stick / Screw Driver	Anti-static Gloves
	
Anti-static Mat	AOD for Tablet
	
Ethyl Alcohol	Cotton Swab

7. Level 2 Repair

7-3. Parts which must be changed after repair

KIT Code	BOM description & part code	Image	Remarks
GH82-20798A	Backglass Outer tape [GH81-17247A]		Left items must be changed to the new one in case of disassemble the Back glass
	Cam sealing tape [GH81-17296A]		
	Mic sealing tap [GH02-07406A]		
	Screws for PBA [6001-003360] 3.2mm Blue resin		
	Screws for rear case [6001-003373] 3.5mm Blue resin		

7. Level 2 Repair

7-4. Disassembly

1

- 1) Put the device in the AOD jig. Set the AOD condition
 - SOC 68%↓: Upper 70°C/ Lower 60 °C 5min
 - SOC 68%↑: Upper 60°C/ Lower 60 °C 5min
- 2) Disassemble the OCTA using the AOD.
(If use alcohol, happen window bubble effect).



2

- Detach the Back Glass.
 - Detach the left side of Back glass

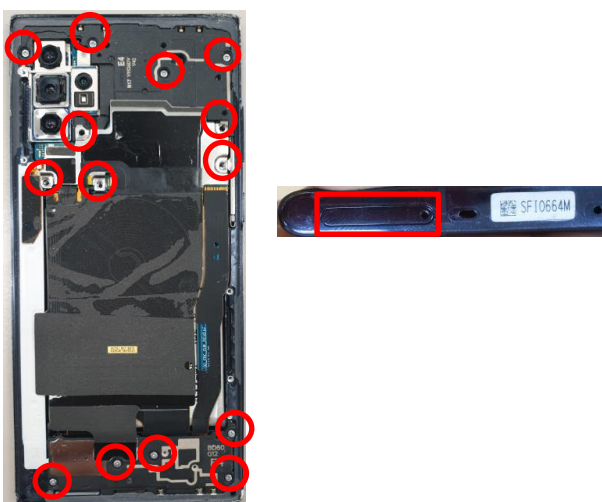


※ **Caution**
Be care of scratch.

※ **Caution**
Be care of scratch.

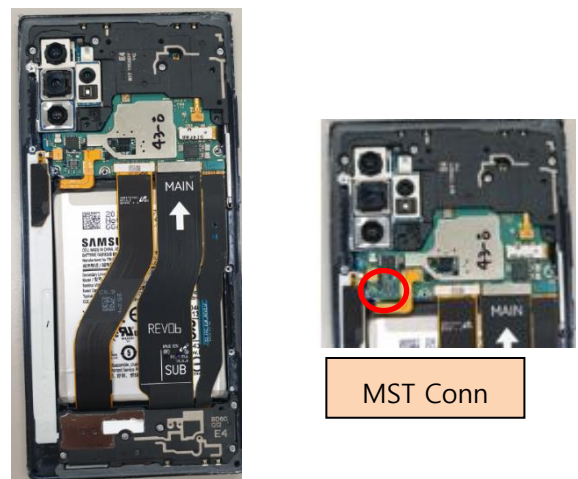
3

- Unscrew 14 Point and disassemble SIM Tray from device



4

- Disassemble Rear mid ASSY
(Before disassemble Rear mid ASSY, MST Conn disassemble first.)



※ **Caution**
Be care of Rear damage.

※ **Caution**
1) Be care of scratch.
2) Be care of Rear and connector damage.

7. Level 2 Repair

5

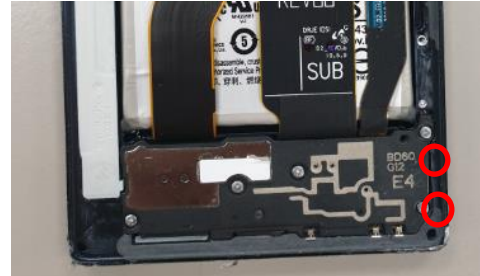
Disassemble Rear of top side.
(Use disassemble hole right side of Rear to detach it)



Rear Top disassemble hole.

6

Disassemble Rear of bottom side.
(Use disassemble hole right side of Rear to detach it)



Rear Bottom disassemble hole.

※ **Caution**

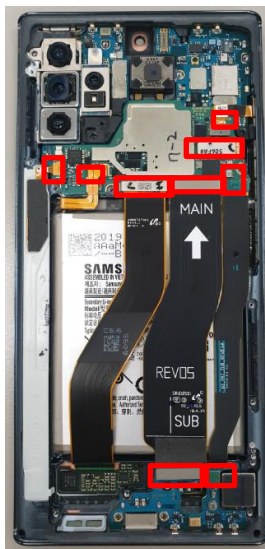
- 1) Be care of scratch.
- 2) Be care of Rear and connector damage.
- 3) Be careful not to damage the PBA.

※ **Caution**

- 1) Be care of scratch.
- 2) Be care of Rear and connector damage.
- 3) Be careful not to damage the PBA.

7

Disassemble 9 Point connector of PBA.

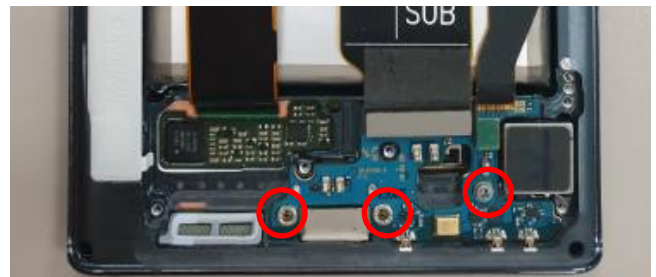


※ **Caution**

- 1) Be care of scratch.
- 2) Be care of connector/cable damage.

8

Unscrew 3 Point in SUB PBA 3 Point



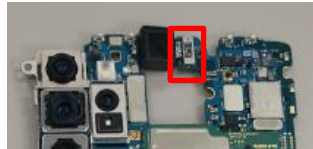
※ **Caution**

- 1) Be care of several kinds of damage.
- 2) Be care of SUB PBA damage.

7. Level 2 Repair

9

Detach Main and Sub PBA
(Before Detach main PBA, Front CAM conn
disassemble first.)

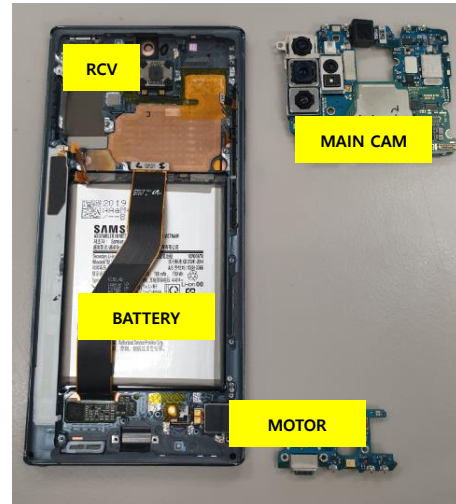


Front CAM conn

※ Caution
Be care of several kinds of damage.

10

Detach other components



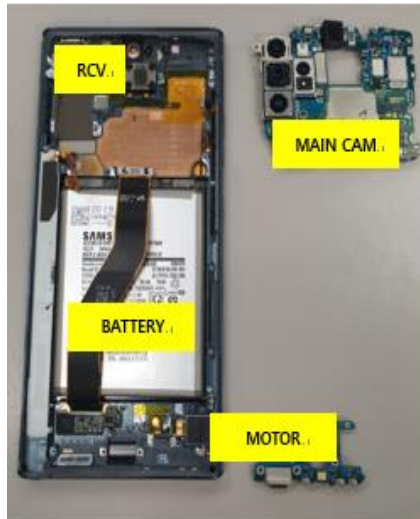
※ Caution
Be care of several kinds of damage.

7. Level 2 Repair

7-5. Assembly

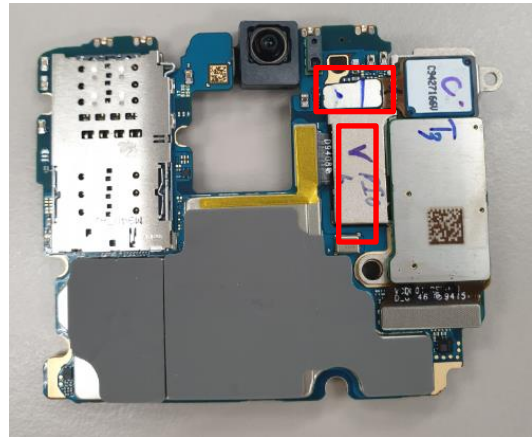
1

Attach components on Front.
(RCV module, Motor, Battery)



2

Attach Main CAM on PBA.



※ Caution

Be care of FPCB, components damage and tilt.

※ Caution

Be care of press power/time.

3

Assemble Main PBA and Sub PBA to Front case

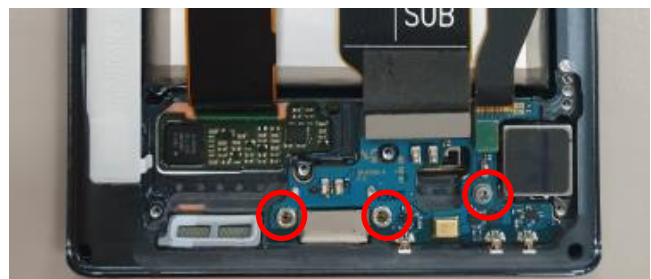


※ Caution

1) Be care of scratch and REAR damage.
2) Check for contact damage.(red area).

4

Screw 3 points in SUB PBA (Torque :
1.4 Kgf.cm)



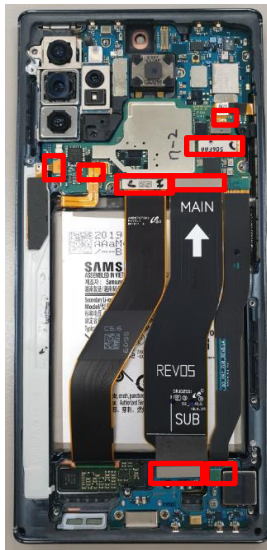
※ Caution

Be care of chip damage nearby screw point.

7. Level 2 Repair

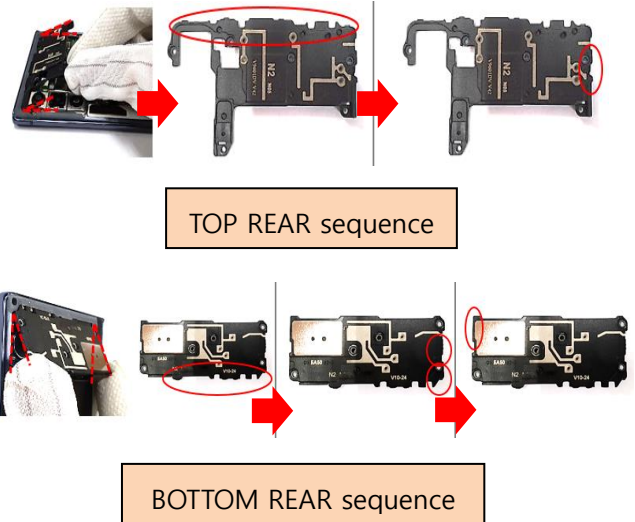
5

Assemble battery connect and the other connectors(8 Point). Also Front CAM assemble.



6

Assemble the TOP and BOTTOM REAR in sequence.

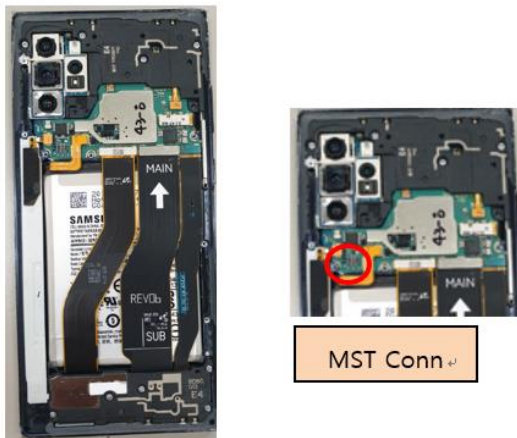


※ Caution
Be care of press power/time.

※ Caution
Be care of scratch and REAR damage.

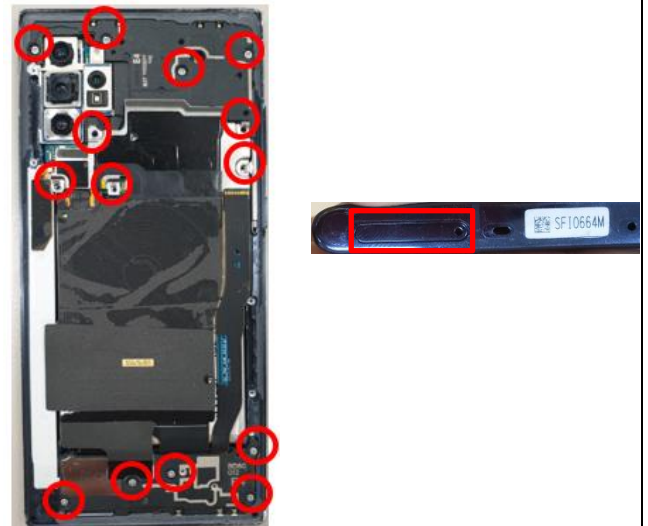
7

MID REAR ASSY assemble.
(Before Mid Rear ASSY assemble, MST conn assemble first)



8

Screw insertion 14 Point (Torque : 1.4 Kgf·cm)
And assembling SIM socket



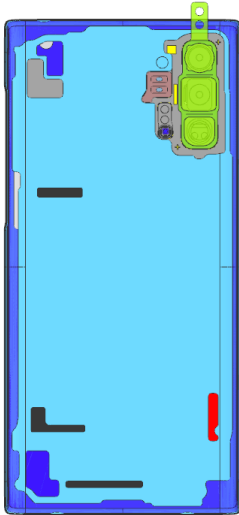
※ Caution
1) Be care of scratch and REAR damage.
2) Be care of press power/time.

※ Caution
Be care of Rear damage.

7. Level 2 Repair

9

Attach the back glass inner tape on the back glass.
- Gently press all adhesive parts of tape using disassembly stick or hands.



10

Attach the back glass on the REAR side.

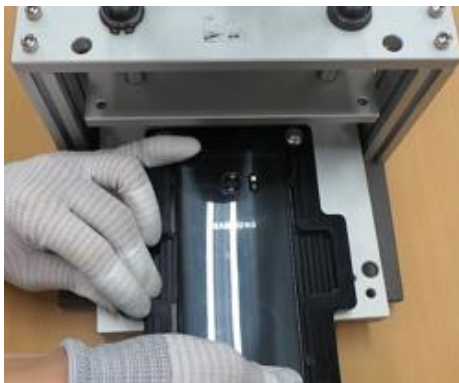


※ Caution
Be care of scratch and tilt.

※ Caution
Be care of scratch and tilt.

11

Press Back Glass.
Pressing force : $6.0\text{kgf}/\text{cm}^2 \pm 3\%$
1 Cycle Pressing time : $10\text{s} \pm 0.3\text{s}$
2 Cycle Pressing time : Each $8\text{s} \pm 0.3\text{s}$
SIM Tray must be separated before pressing the backglass or the OCTA
- Gently press all adhesive parts of tape using disassembly stick or hands.



※ Caution
Be care of scratch and tilt.