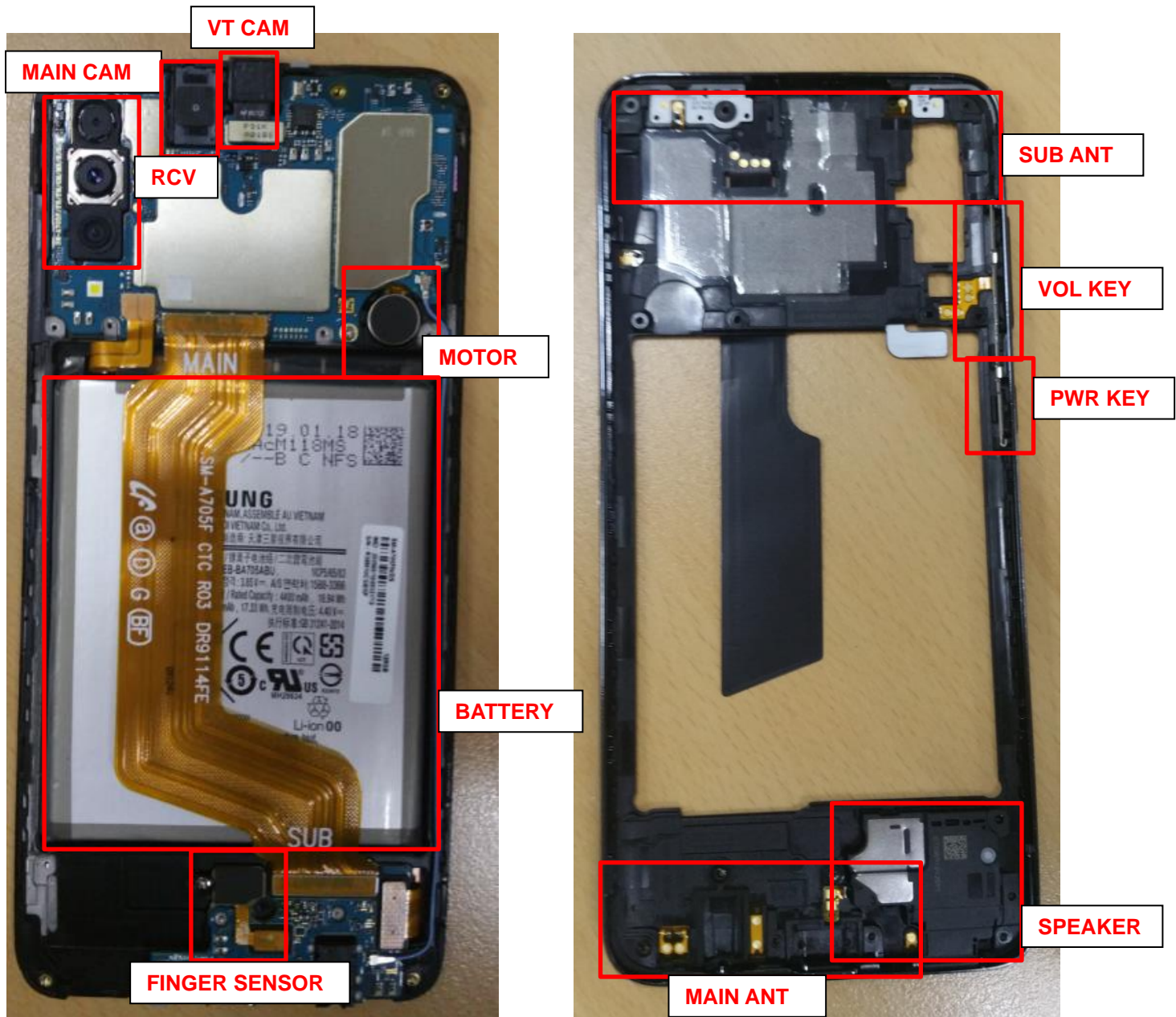


7. Level 2 Repair

7-1. Components on the Rear Case



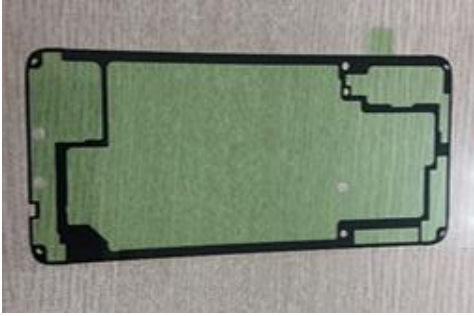
7. Level 2 Repair

7-2. Pre-requisite

<p>Tweezers / Disass'y Stick / Screw Driver</p>	<p>Anti-static Gloves</p>
<p>Anti-static Mat</p>	<p>Hot Plate</p>
<p>A OCTA Disassembly Holder</p>	<p>OCTA Disassembly Upper</p>
<p>Ethyl Alcohol</p>	<p>Cotton Swab</p>

7. Level 2 Repair

7-3. Parts which must be changed after repair

BOM Description & part code	Image	Remarks
<p>Backglass Outside tape [GH81-16831A]</p>		<p>It needs all when the Backglass is removed/replaced</p>

7. Level 2 Repair

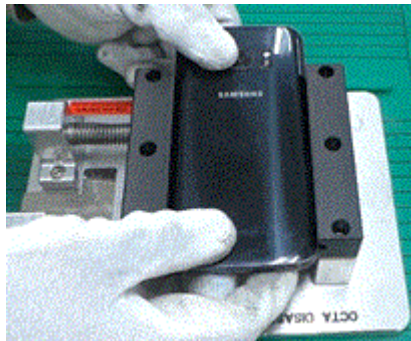
7-4. Disassembly

1

1) Put the device in the chamber or Hot plate as below heating condition
 - SOC 68%↓: 70°C/10~20min
 - SOC 68%↑: Discharge until 68%↓
 ※ Please confirm the heating condition released lastly, and follow it.

2) Detach the Backglass using disassembly jig

※ Below picture shows how to detach Back Glass using service jig, however you can use manufactural jig if possible.



※ **Caution**
Be careful not to damage set and OCTA.

2

Disassemble SIM Tray from device.
Unscrew 14Points.



※ **Caution**
Be care of scratch and molding damage.

3

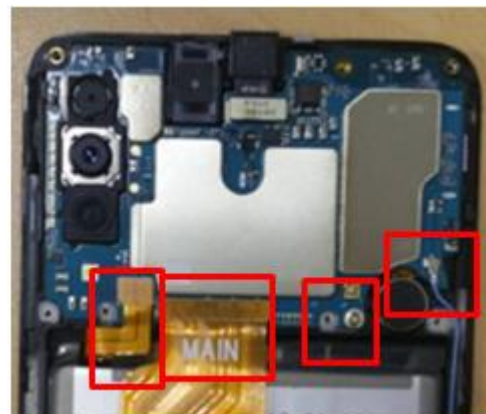
Disassemble the REAR from Front Assy.



※ **Caution**
Be care of damage to components.

4

1. Disassemble Connector 2ea from PBA.
 2. Unscrew 1 Points from PBA.
 3. Disassemble Coaxial Cable 1ea from PBA.

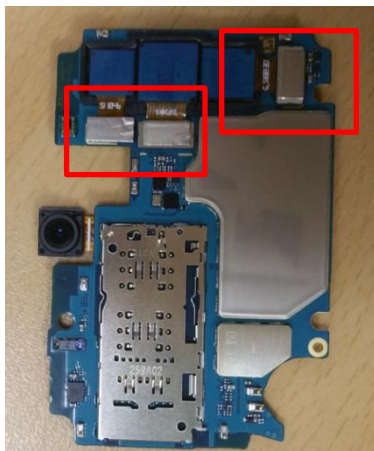
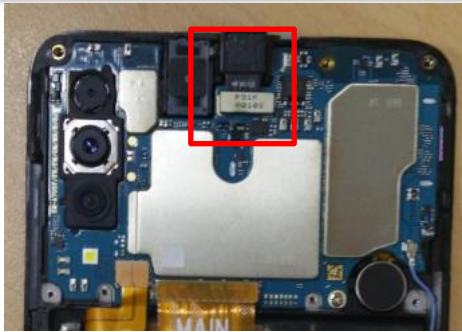


※ **Caution**
Be careful not to damage the PBA.

7. Level 2 Repair

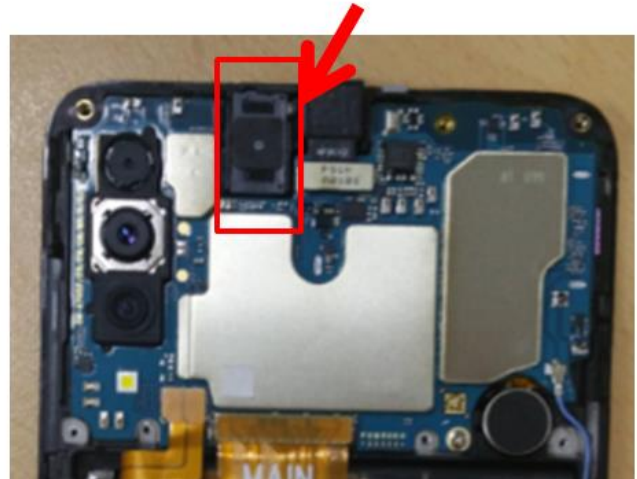
5

1. Disassemble PBA Assy from Front Assy.
2. Disassemble Front /Rear Camera from PBA



6

- Detach RCV from Front Ass'y.



※ **Caution**

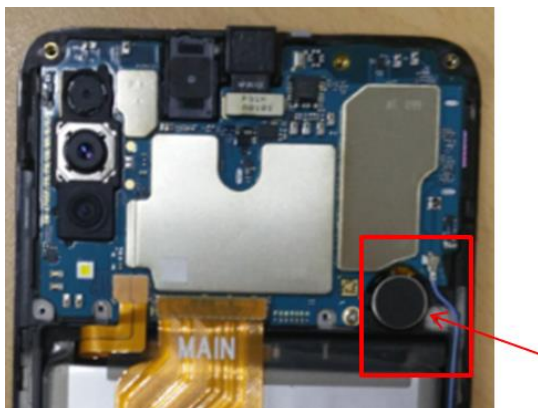
Be careful not to damage the PBA.

※ **Caution**

Be careful not to damage the RCV.

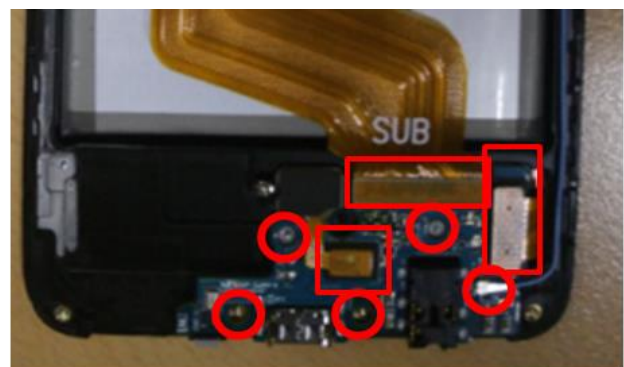
7

- Detach Motor from Front Ass'y.



8

- Remove FPCB 3ea and fix screw 6ea+ RF Cable 1ea.



※ **Caution**

Be careful not to damage the Motor.

※ **Caution**

Be careful not to damage the Sub PBA and connector

7. Level 2 Repair

9

Detach SPK from Rear Ass'y



※ Caution

7. Level 2 Repair

7-5. Assembly

1

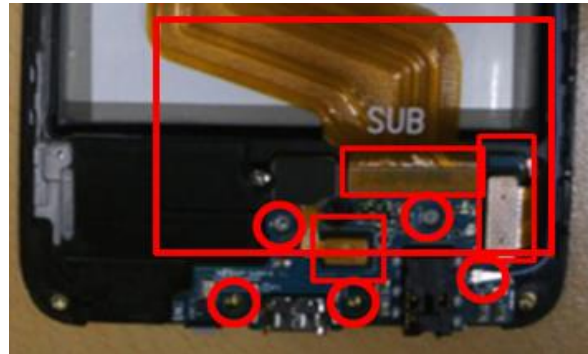
Attach SPK on Rear Ass'y.



※ **Caution**
 Be care of SPK damage.

2

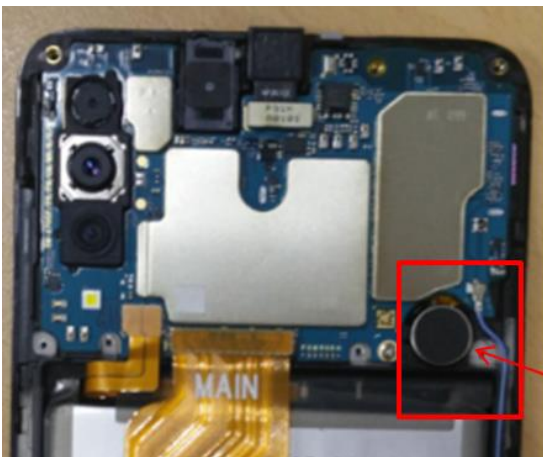
Attach Sub PBA on Front Ass'y.
 Joint FPCB 3ea and fix screw 6ea+ RF Cable 1ea.



※ **Caution**
 Be care of Sub PBA damage.

3

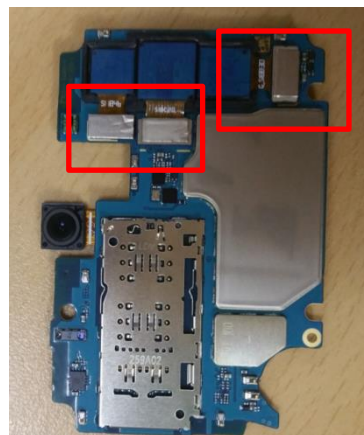
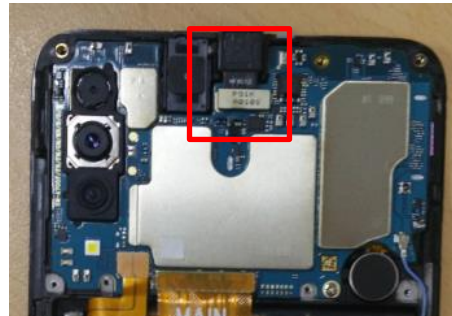
Attach Motor and Receiver in upper area.



※ **Caution**
 1) Be care of scratch CAM lens.
 2) Be care of damage each part.

4

Assemble the PBA and C to C FPCB 1ea and
 Batt Conn and COAXIAL CABLE, camera
 and VT Camera.

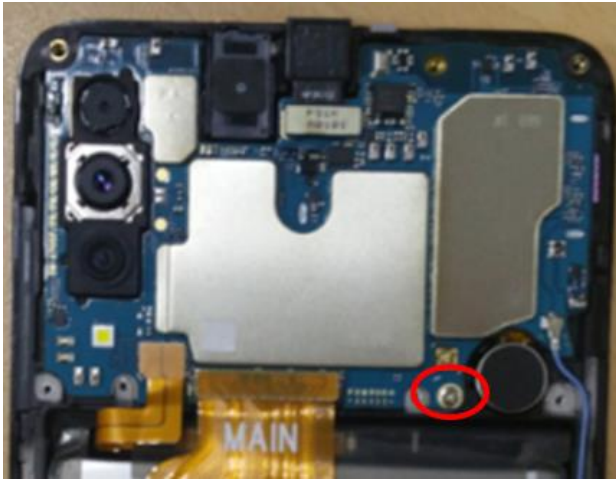


※ **Caution**
 Check for each connector connection.

7. Level 2 Repair

5

Screw insertion 1 Point.
* Torque Value : $0.95 \pm 7\%$



6

Assemble Rear and screw insertion 14 point.
* Torque Value : $1.25 \pm 10\%$



⚠ **Caution**
Be care of PBA damage.

⚠ **Caution**
Be care of PBA damage.

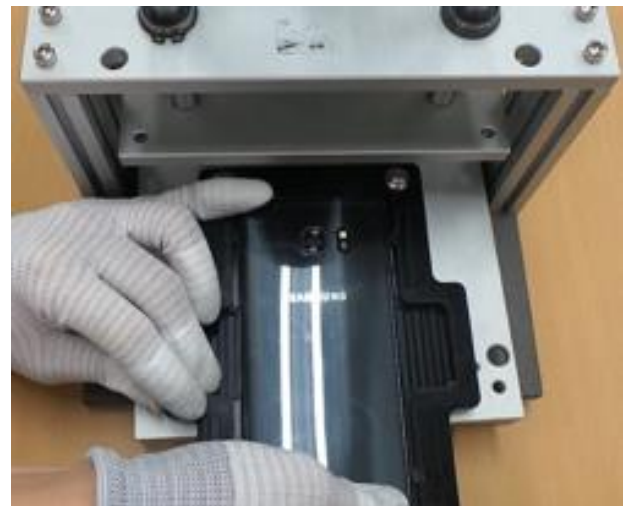
7

Assemble cover rear and insert SIM/SD Tray.



8

Press Back Glass.
- Pressing force : 1 N
- Pressing time : 1 minute
SIM Tray must be separated before pressing the backglass or the OCTA



⚠ **Caution**
Be care of scratch Rear cover.

⚠ **Caution**
1) Be care of scratch.