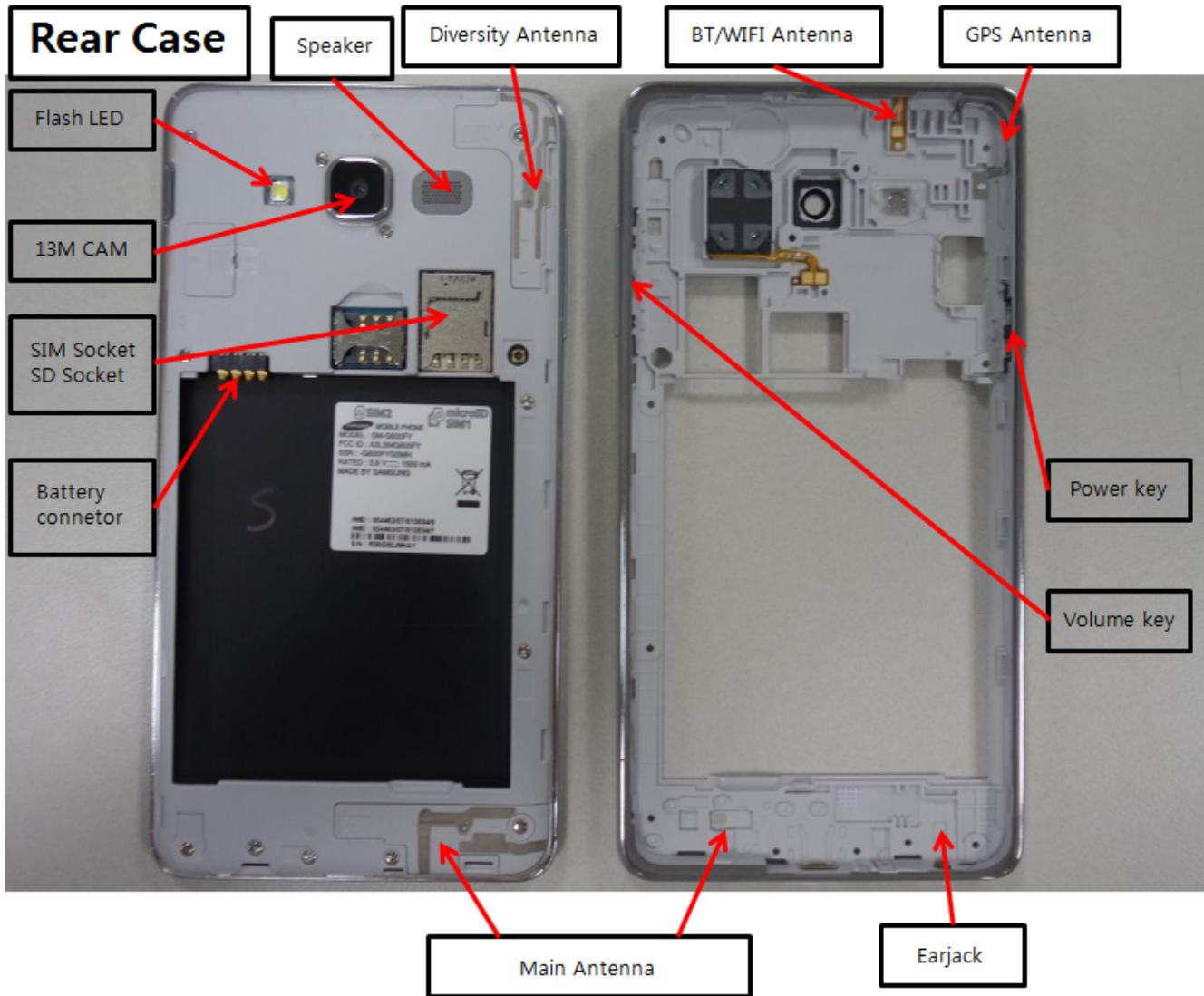


## 7. Level 2 Repair







### 7-1. Components on the Rear Case



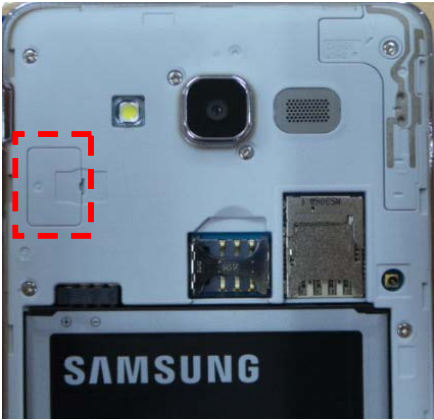
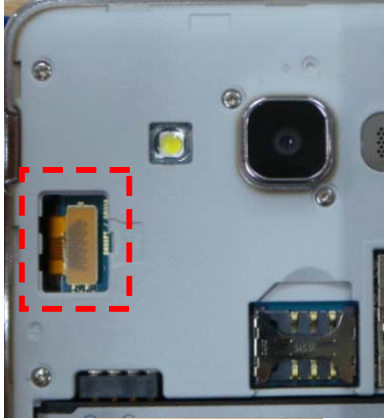


## 7-2. Pre-requisite

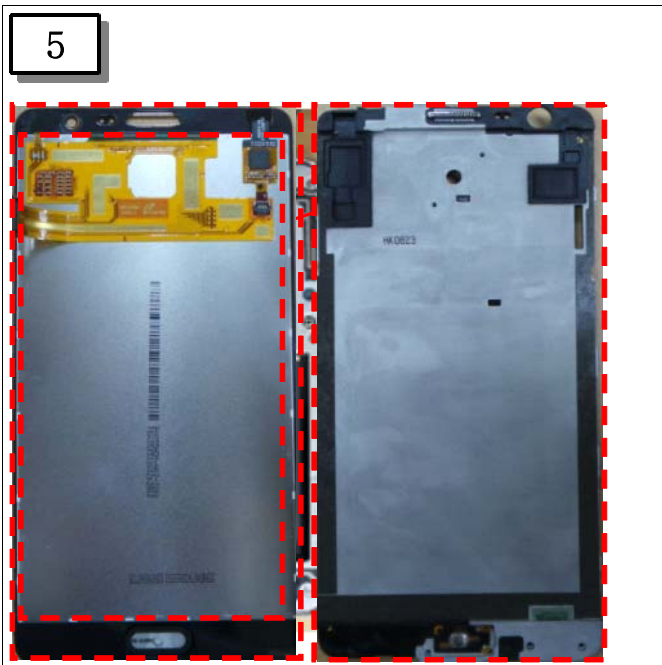
	
<p><b>Tweezers / Disass'y Stick / Screw Driver/ Dissolution jig.</b></p>	<p><b>Anti-static Gloves</b></p>
	
<p><b>OCTA Disassembly Holder</b></p>	<p><b>Anti-static Mat</b></p>
	
<p><b>Acryl Jig Rework Form</b></p>	<p><b>Glass Absorbers (2ea)</b></p>
	
<p><b>Tape Rework Form</b></p>	<p><b>Mobile Dryer</b></p>

### 7-3. Parts which must be changed after repair

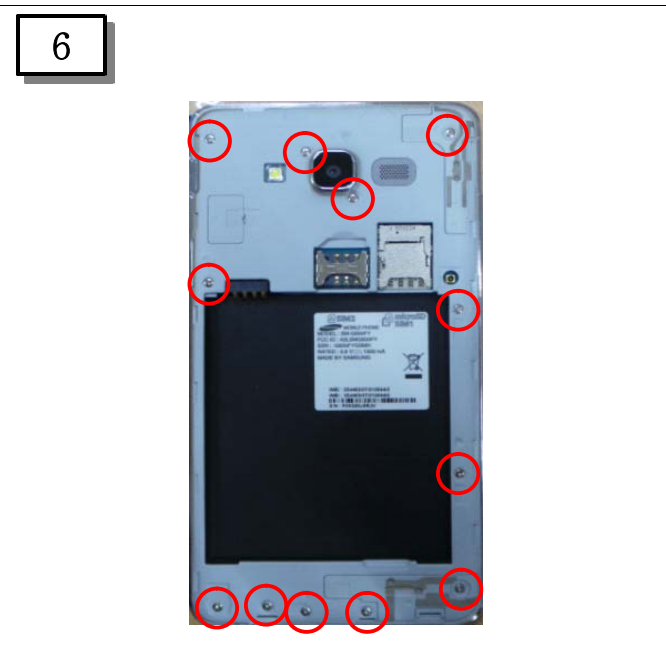
<p>A/S-TAPE REWORK SVC [GH81-13414A]</p>	
<p>A/S-TSP TOP SVC [GH81-13415A]</p>	
<p>A/S-TAPE OCTA REWORK SVC [GH81-13416A]</p>	
<p>THERMAL CONDUCTIVE ADHESIVE-LCD RIGHT [GH02-11421A]</p> <p>THERMAL CONDUCTIVE ADHESIV E-LCD LEFT [GH02-11420A]</p> <p>THERMAL CONDUCTIVE ADHESIV E-LCD BOT [GH02-11422A]</p>	  

### 7-4. Disassembly

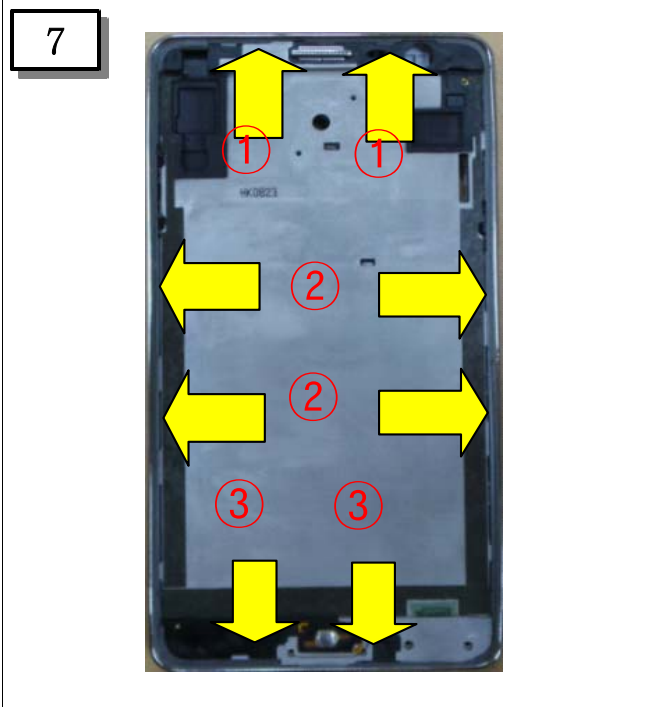
<div data-bbox="186 331 219 373" style="border: 1px solid black; padding: 2px; display: inline-block;">1</div> <div data-bbox="272 331 792 373" style="border: 1px solid black; padding: 2px;">1) Detach the LCD Connector Cover.</div> 	<div data-bbox="852 331 885 373" style="border: 1px solid black; padding: 2px; display: inline-block;">2</div> <div data-bbox="938 331 1458 415" style="border: 1px solid black; padding: 2px;">1) Separate the LCD connector from the PBA.</div> 
<p>※ <b>Caution</b> Be Careful not to Damage of FPCB</p>	
<div data-bbox="186 1098 219 1140" style="border: 1px solid black; padding: 2px; display: inline-block;">3</div> 	<div data-bbox="852 1098 885 1140" style="border: 1px solid black; padding: 2px; display: inline-block;">4</div> 
<p>1) After heating for 5-10 minutes the device at 70-80 °C, take out the device from Mobile dryer.</p>	<p>1) Detach the Bracket carefully from the LCD using Glass absorber and holder.</p> <p>※ <b>Caution:</b> Be careful not to separate LCD from TSP.</p>



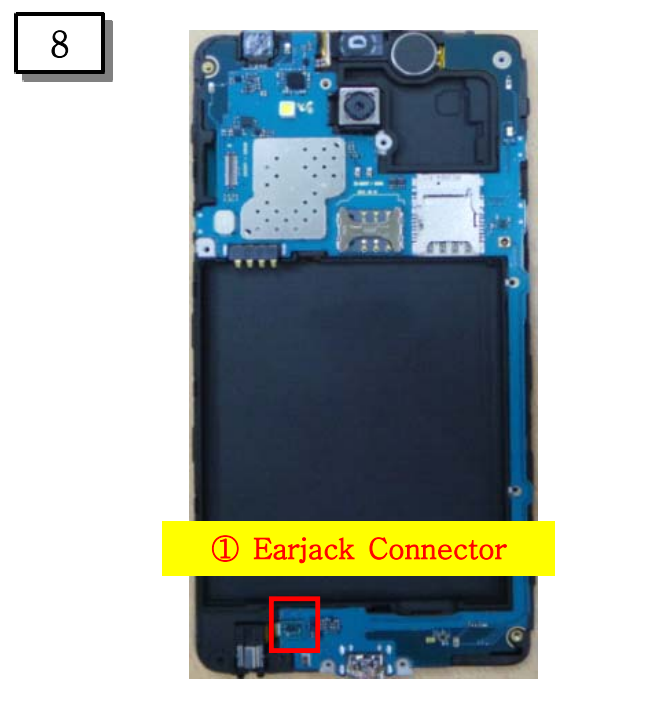
1) Remove all residue (i.e. LCD form tape, BRK tape) from LCD and BRK case.  
\* **Caution:** Be Careful not to Damage of FPCB



1) Unscrew 12 points on the REAR

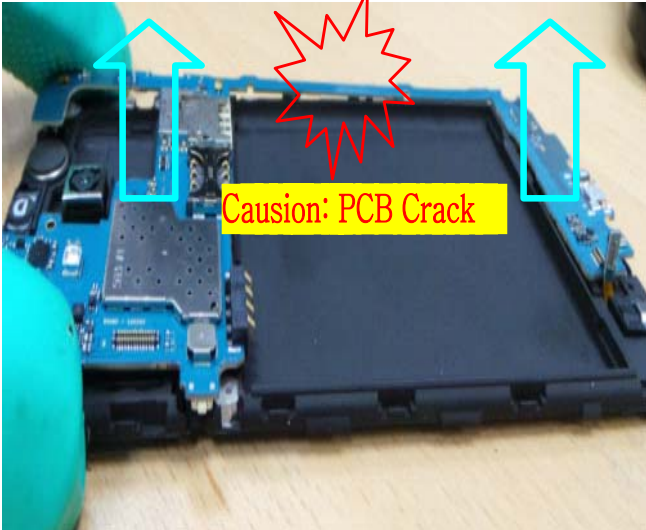



1) Disassemble Bracket from the Rear case.  
(TOP → Left&Right → Bottom)


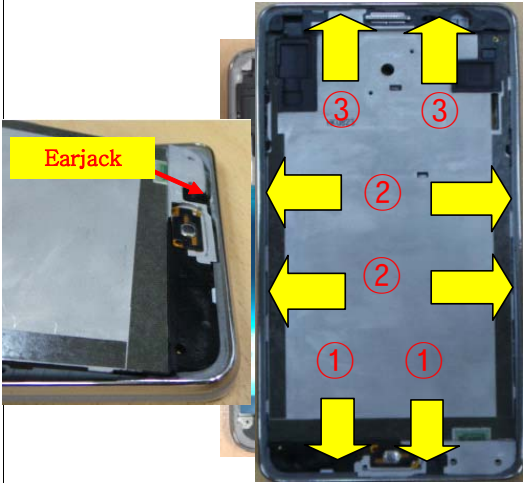




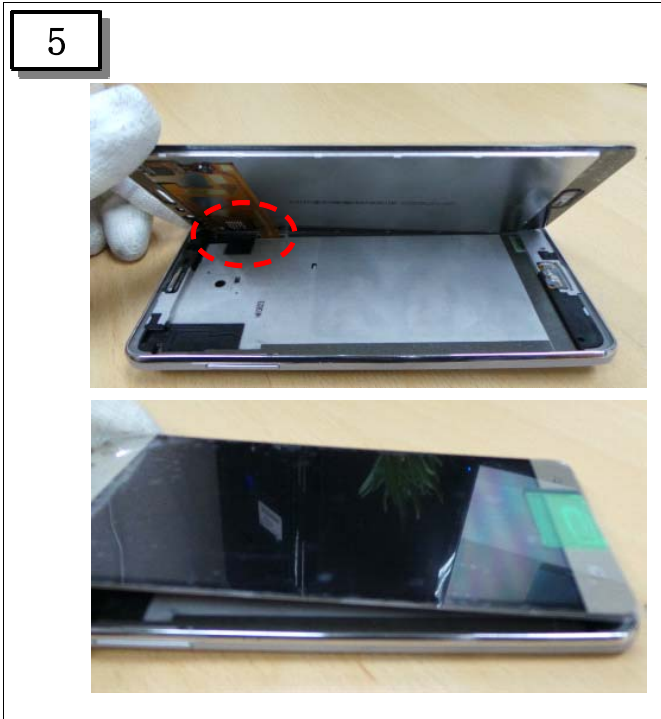
1) Separate Earjack connector



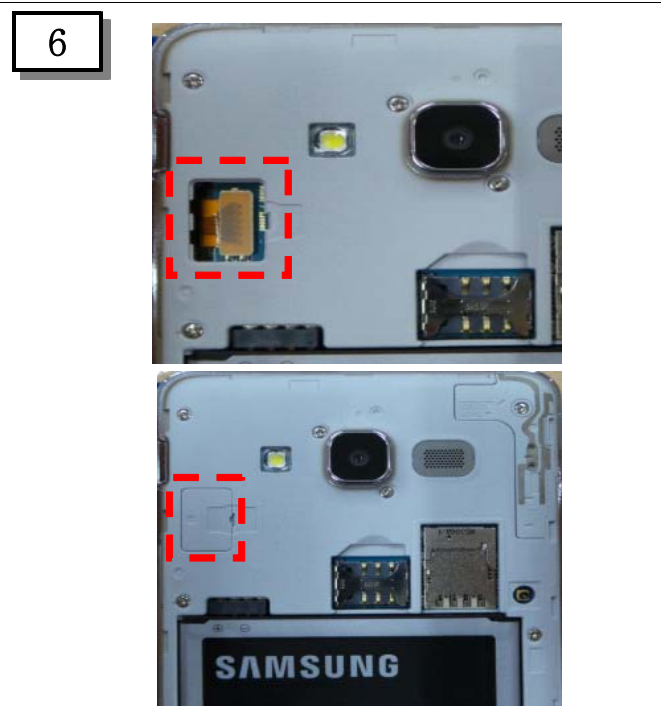
<p>5</p>  <p>Caution: PCB Crack</p>	<p>6</p> 
<p>1) Remove vertically lifting the PBA. (In order to prevent PCB Crack)</p>	

### 7-5. assembly

<div style="border: 1px solid black; padding: 5px; width: 40px; float: left; margin-right: 10px;">1</div>  <p style="text-align: center; background-color: yellow; border: 1px solid black; padding: 2px;">① Earjack Connector</p>	<div style="border: 1px solid black; padding: 5px; width: 40px; float: left; margin-right: 10px;">2</div>  <p style="background-color: yellow; border: 1px solid black; padding: 2px; display: inline-block;">Earjack</p>
<p>1) Assemble Main PBA on Bracket 2) Assemble the earjack connector.</p>	<p>1) The earjack insert part from the Rear. 2) Assemble Bracket on the Rear case. (Bottom → Left&amp;Right → Top)</p>
<div style="border: 1px solid black; padding: 5px; width: 40px; float: left; margin-right: 10px;">3</div> 	<div style="border: 1px solid black; padding: 5px; width: 40px; float: left; margin-right: 10px;">4</div> 
<p>1) Attach LCD tape on the LCD unit using LCD tape attaching JIG.</p>	<p>1) Remove all vinyl from Bracket, LCD outside.</p>



1) Assemble LCD unit on the Rear case.  
Do not forget to connect LCD connector.



1) Assemble the LCD connector and LCD Connector Cover



1) Press OCTA Window using Window pressing JIG.