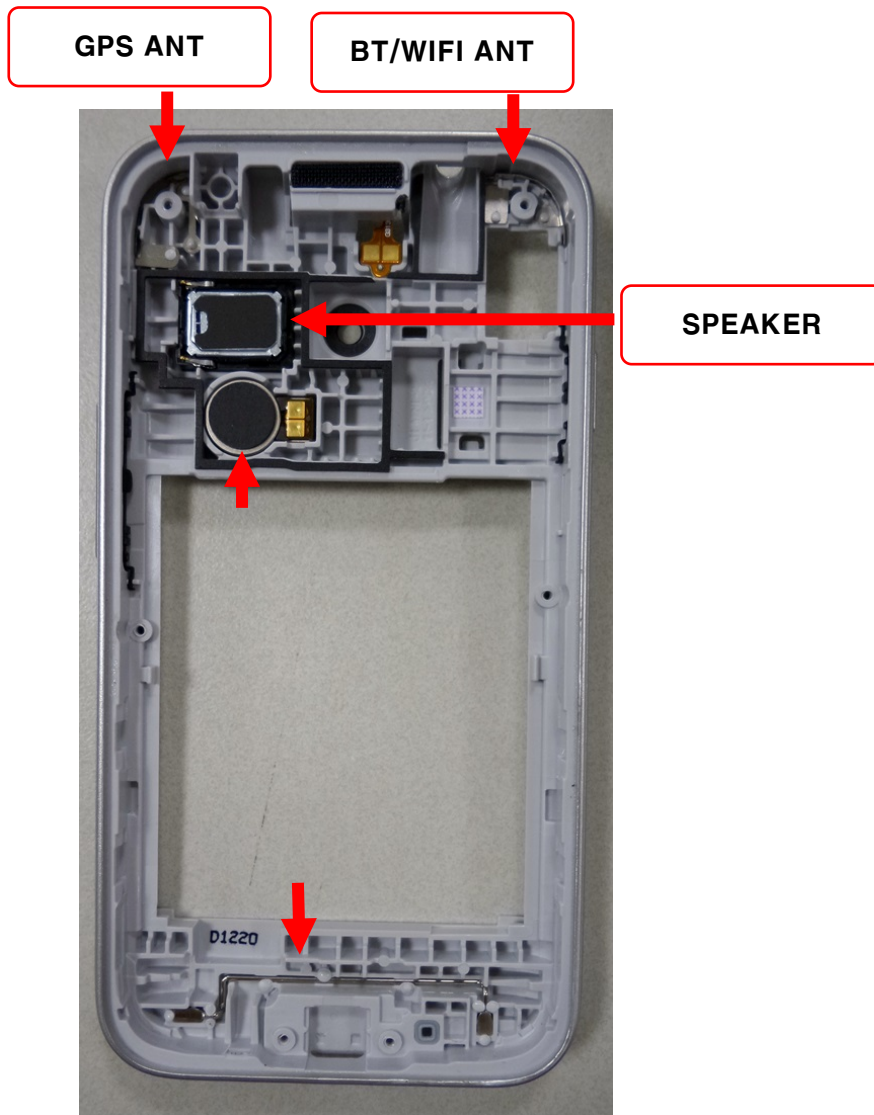


## 7. Level 2 Repair

### 7-1. Components on the Rear Case



## 7. Level 2 Repair

### 7-2. Pre-requisite

	
<b>Tweezers / Disass'y Stick / Screw Driver</b>	<b>Anti-statoc Gloves</b>
	
<b>Anti-static Mat</b>	<b>Hot Plate</b>
	
<b>A OCTA Disassembly Holder</b>	<b>OCTA Disassembly Upper</b>
	
<b>Ethyl Alcohol</b>	<b>Cotton Swab</b>

## 7. Level 2 Repair

### 7-2. Parts which must be changed after repair

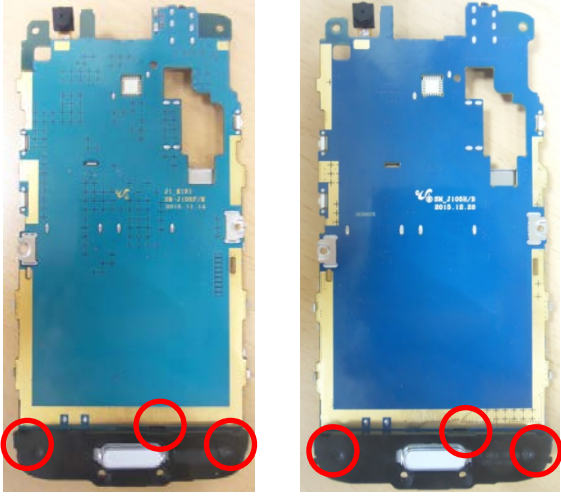
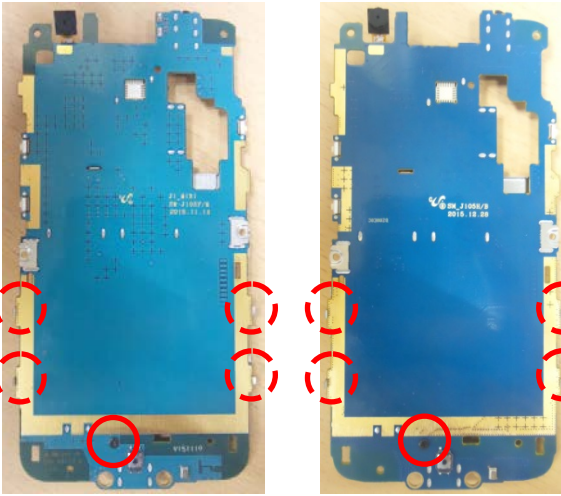
BOM Description	Picture	Remarks
<p style="text-align: center;"> <b>A/S-TAPE DOUBLE FACE_SVC_TAPE_TSP [GH81-13633A]</b> </p>		
<p style="text-align: center;"> <b>A/S-TAPE DOUBLE FACE_SVC_TAPE_TSP+LCD [GH81-14176A]</b> </p>		
<p style="text-align: center;"> <b>INHOUSE TAPE-TAPE LCD L [GH02-12192A]</b> </p>		<p><b>Replace when repair Front part</b></p>
<p style="text-align: center;"> <b>INHOUSE TAPE-TAPE LCD R [GH02-12194A]</b> </p>		

# 7. Level 2 Repair

## 7-3. Disassembly

<div data-bbox="127 313 742 392" style="border: 1px solid black; padding: 5px;"> <p><b>1</b> Disassembly on LCD CAP, LCD Conn.</p> </div> <div data-bbox="143 403 734 974"> <div data-bbox="143 907 406 974" style="border: 1px solid black; padding: 5px;"> <p>SM-J106F</p> </div> <div data-bbox="470 907 742 974" style="border: 1px solid black; padding: 5px;"> <p>SM-J106H</p> </div> </div>	<div data-bbox="837 313 1460 392" style="border: 1px solid black; padding: 5px;"> <p><b>2</b> Disassemble the LCD Ass'y</p> </div> <div data-bbox="837 414 1468 918"> </div>
<p><b>1. Disassembly LCD CAP and Connector from Rear.</b>  <b>*Be care for no scratch.</b></p>	
<div data-bbox="127 1131 742 1209" style="border: 1px solid black; padding: 5px;"> <p><b>3</b> Disassemble the Rear Ass'y[1]</p> </div> <div data-bbox="143 1220 734 1792"> <div data-bbox="143 1724 406 1792" style="border: 1px solid black; padding: 5px;"> <p>SM-J106F</p> </div> <div data-bbox="470 1724 742 1792" style="border: 1px solid black; padding: 5px;"> <p>SM-J106H</p> </div> </div>	<div data-bbox="837 1131 1460 1209" style="border: 1px solid black; padding: 5px;"> <p><b>4</b> Disassemble the Rear Ass'y[2]</p> </div> <div data-bbox="853 1220 1452 1792"> <div data-bbox="853 1724 1117 1792" style="border: 1px solid black; padding: 5px;"> <p>SM-J106F</p> </div> <div data-bbox="1173 1724 1444 1792" style="border: 1px solid black; padding: 5px;"> <p>SM-J106H</p> </div> </div>
<p><b>1. Loosen 6 points of screw.</b>  <b>2. Disassemble RCV Dummy on REAR(Only SM-J105F)</b></p> <p><b>1. Disassemble PBA Ass'y and Rear starting from bottom hook first as the order on the picture.</b>  <b>*Be careful not to damage of PBA</b></p>	

## 7. Level 2 Repair

<p><b>5</b> Disassemble Home Key Dummy</p>	<p><b>6</b> Disassemble Shieldcan</p>
 <p>SM-J106F      SM-J106H</p>	 <p>SM-J106F      SM-J106H</p>
<p><b>1. Detach the 3point hooks in order.</b></p>	<p><b>1. Loosen 1points of screw.</b> <b>2. Detach the 4point hooks in order.</b></p>

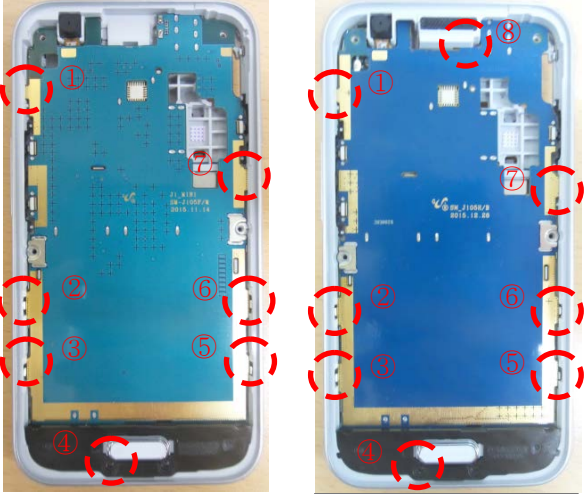
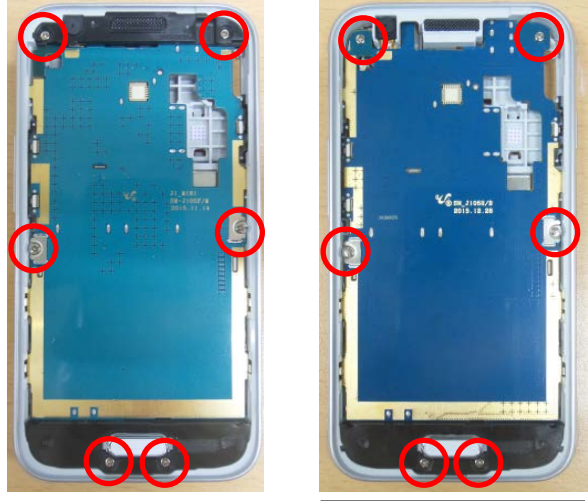

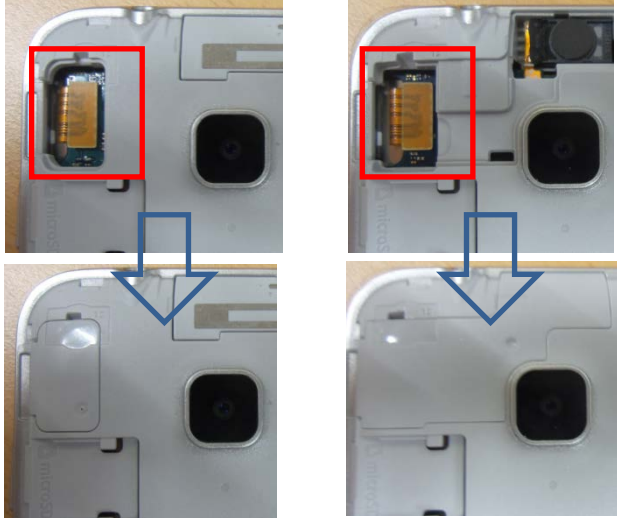


# 7. Level 2 Repair

## 7-4. Assembly

<div data-bbox="140 315 754 387" style="border: 1px solid black; padding: 5px;"> <p><b>1</b> Assemble PBA Ass'y[1]</p> </div> <div data-bbox="140 432 748 922"> </div> <div data-bbox="148 943 413 992" style="border: 1px solid black; padding: 5px;"> <p>SM-J106F</p> </div> <div data-bbox="472 943 737 992" style="border: 1px solid black; padding: 5px;"> <p>SM-J106H</p> </div>	<div data-bbox="842 315 1457 387" style="border: 1px solid black; padding: 5px;"> <p><b>2</b> Assemble PBA Ass'y[2]</p> </div> <div data-bbox="874 432 1465 922"> </div>
<p><b>1.Assemble VGA Camera/Shieldcan on the PBA Ass'y.</b></p> <p><b>1.Screw 1Point in order</b> <b>2.Assemble Home Key Dummy on PBA Ass'y.</b></p>	
<div data-bbox="124 1135 738 1207" style="border: 1px solid black; padding: 5px;"> <p><b>3</b> Assemble Rear Ass'y</p> </div> <div data-bbox="140 1227 734 1720"> </div> <div data-bbox="132 1742 397 1792" style="border: 1px solid black; padding: 5px;"> <p>SM-J106F</p> </div> <div data-bbox="472 1742 737 1792" style="border: 1px solid black; padding: 5px;"> <p>SM-J106H</p> </div>	<div data-bbox="842 1135 1457 1207" style="border: 1px solid black; padding: 5px;"> <p><b>4</b> Assemble Rear Ass'y &amp; PBA Ass'y[1]</p> </div> <div data-bbox="930 1294 1380 1720"> </div>
<p><b>1.Assemble Speaker/ Moter on Rear.</b></p>	<p><b>1.Insert the top side of PBA Ass'y into Rear first.</b></p>

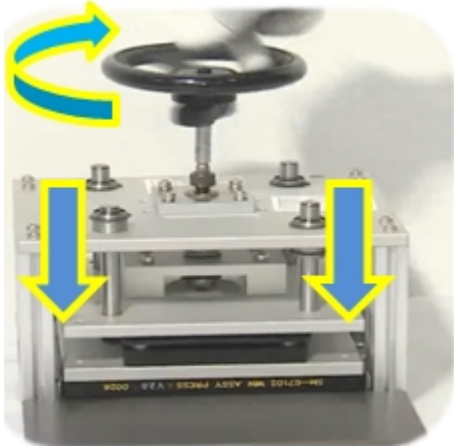
# 7. Level 2 Repair

<div data-bbox="113 277 727 349" style="border: 1px solid black; padding: 5px;"> <p><b>5</b> Assemble Rear Ass'y &amp; PBA Ass'y[2]</p> </div> <div data-bbox="140 383 727 875">  </div> <div data-bbox="145 875 408 931" style="border: 1px solid black; padding: 5px;"> <p>SM-J106F</p> </div> <div data-bbox="453 875 719 931" style="border: 1px solid black; padding: 5px;"> <p>SM-J106H</p> </div>	<div data-bbox="834 277 1449 349" style="border: 1px solid black; padding: 5px;"> <p><b>6</b> Assemble REAR Ass'y &amp; PBA Ass'y[3]</p> </div> <div data-bbox="847 376 1437 875">  </div> <div data-bbox="842 875 1106 931" style="border: 1px solid black; padding: 5px;"> <p>SM-J106F</p> </div> <div data-bbox="1163 875 1430 931" style="border: 1px solid black; padding: 5px;"> <p>SM-J106H</p> </div>
<p><b>1.</b> Assemble 8 points of hooks accurately as the order on the picture.  <b>*Be careful not to damage</b></p>	<p><b>1.</b> Assemble RCV Dummy on Rear. (Only SM-J105F)  <b>2.</b> Screw 6 points in order          -. Torque : 1.4±0.1kgf          -. Size : 1.6*4.0 (6002-001612)</p>
<div data-bbox="113 1133 727 1205" style="border: 1px solid black; padding: 5px;"> <p><b>7</b> Assemble LCD Ass'y &amp; Rear Ass'y[1]</p> </div> <div data-bbox="124 1305 751 1630">  </div>	<div data-bbox="834 1133 1449 1205" style="border: 1px solid black; padding: 5px;"> <p><b>8</b> Assemble LCD Ass'y &amp; Rear Ass'y[2]</p> </div> <div data-bbox="826 1234 1445 1749">  </div> <div data-bbox="826 1749 1090 1805" style="border: 1px solid black; padding: 5px;"> <p>SM-J106F</p> </div> <div data-bbox="1171 1749 1437 1805" style="border: 1px solid black; padding: 5px;"> <p>SM-J106H</p> </div>
<p><b>1.</b> Remove a release paper on LCD Ass'y back. Insert LCD Connector into Rear. And then, attach LCD Ass'y Y to Rear.  <b>*Must check Home key assembled.</b></p>	<p><b>1.</b> Assemble the LCD Connector  <b>2.</b> Assemble the LCD Connector cap.</p>

## 7. Level 2 Repair

9

Assemble LCD Ass'y & Rear Ass'y[3]



**1.Press the set using pressure JIG.**

**\*1N for 1minute**