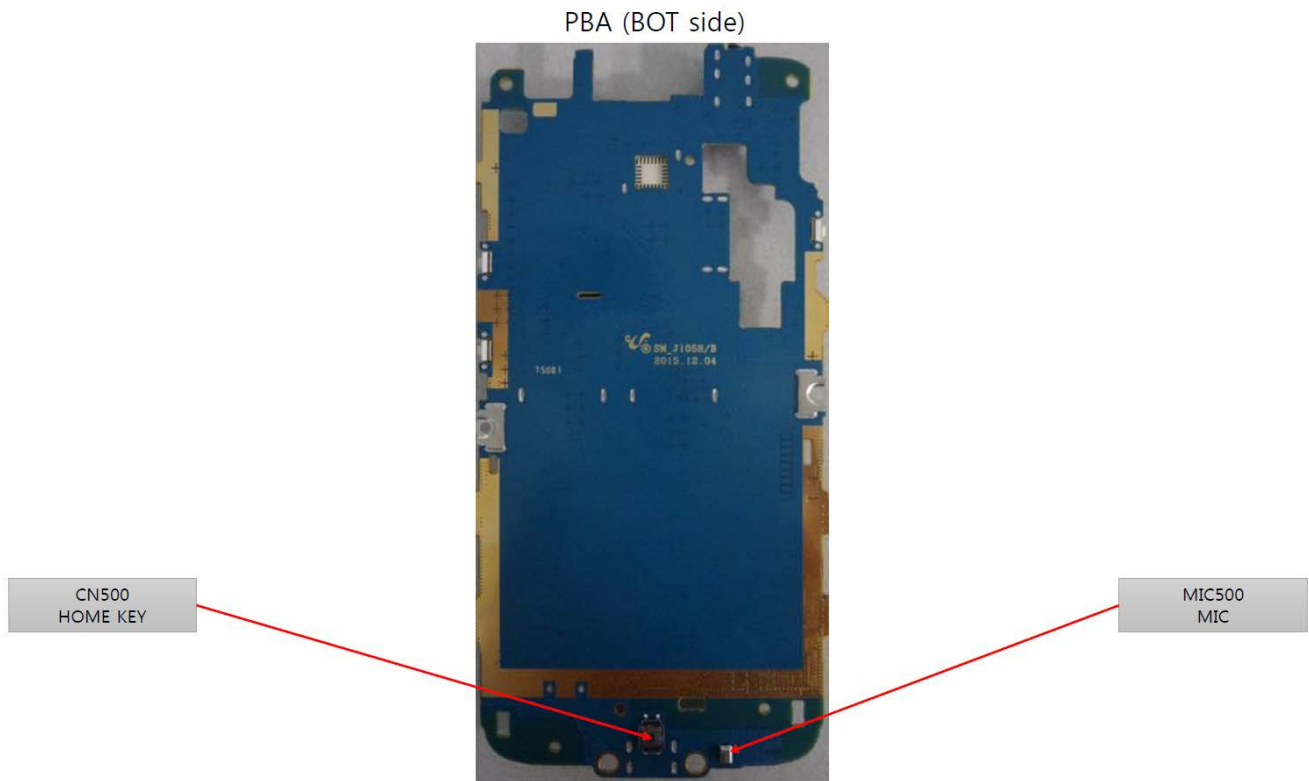
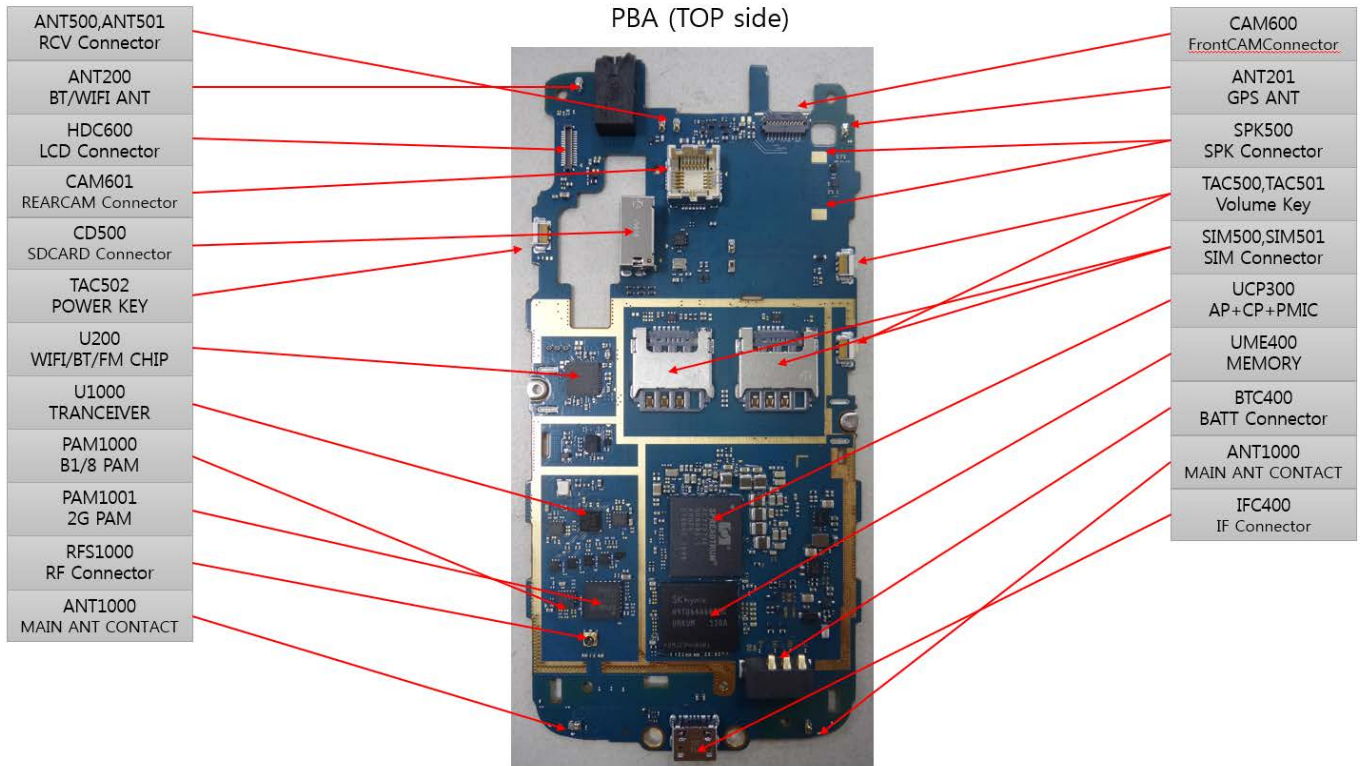
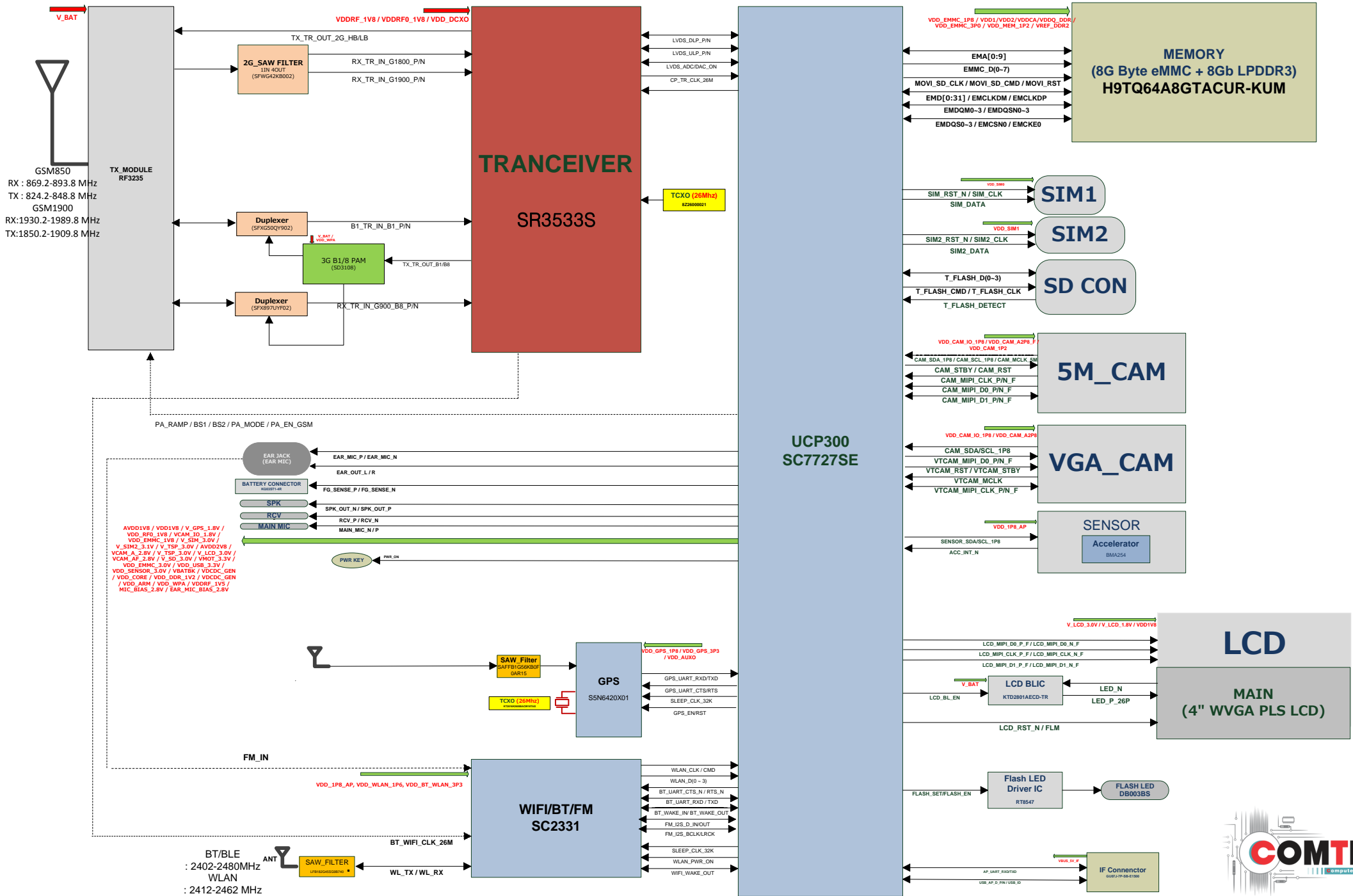


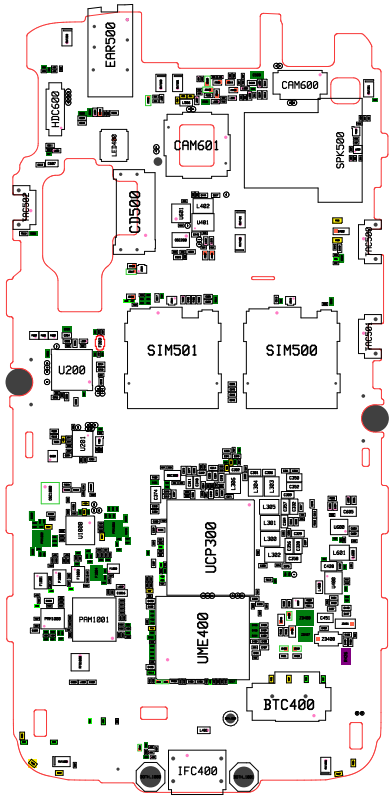
8. Level 3 Repair

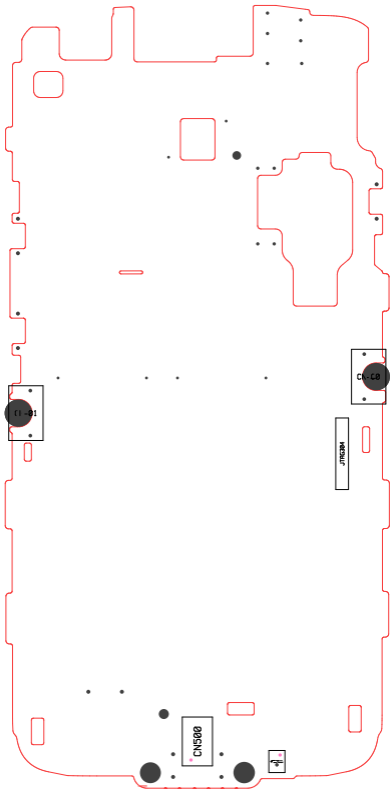
8-1. Components Layout



SM-J106H (J1 mini 3G) BLOCK DIAGRAM

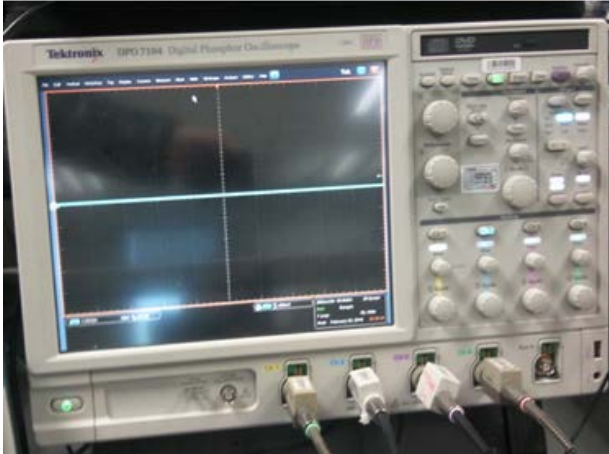


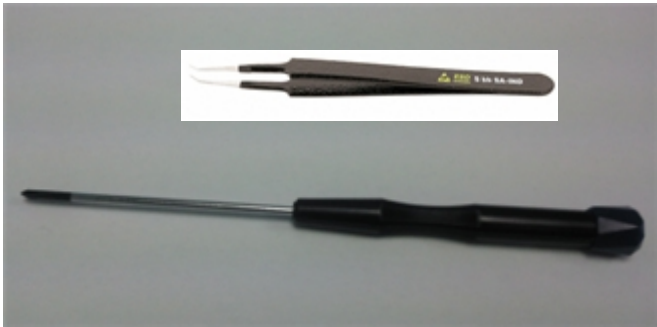
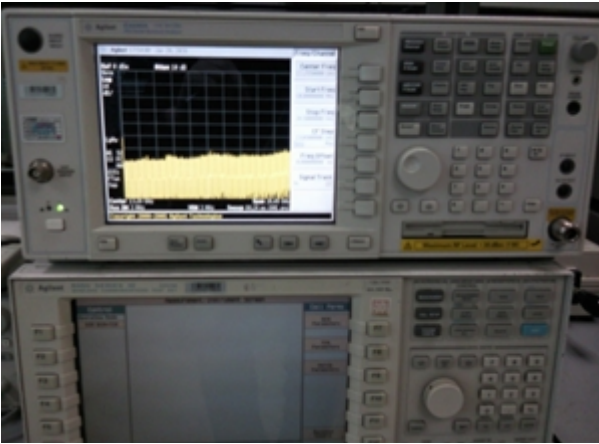







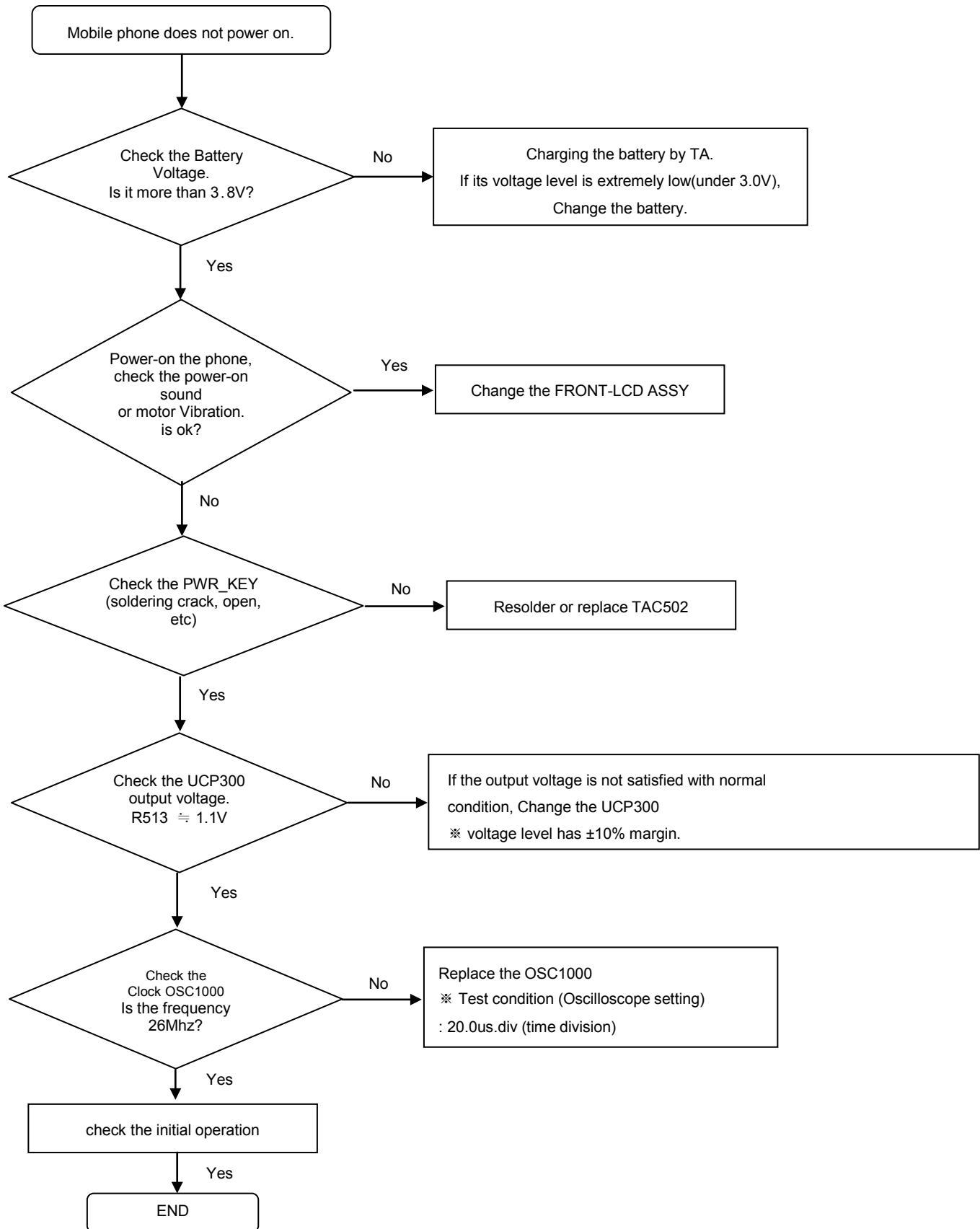
8. Level 3 Repair

8-3. Flow Chart of Troubleshooting

	
<p>Oscilloscope</p>	<p>Digital Multimeter</p>
	
<p>Power Supply</p>	<p>+ driver, ESD Safe Tweezer</p>
	
<p>8960 & Spectrum Analyzer</p>	<p>Soldering iron</p>

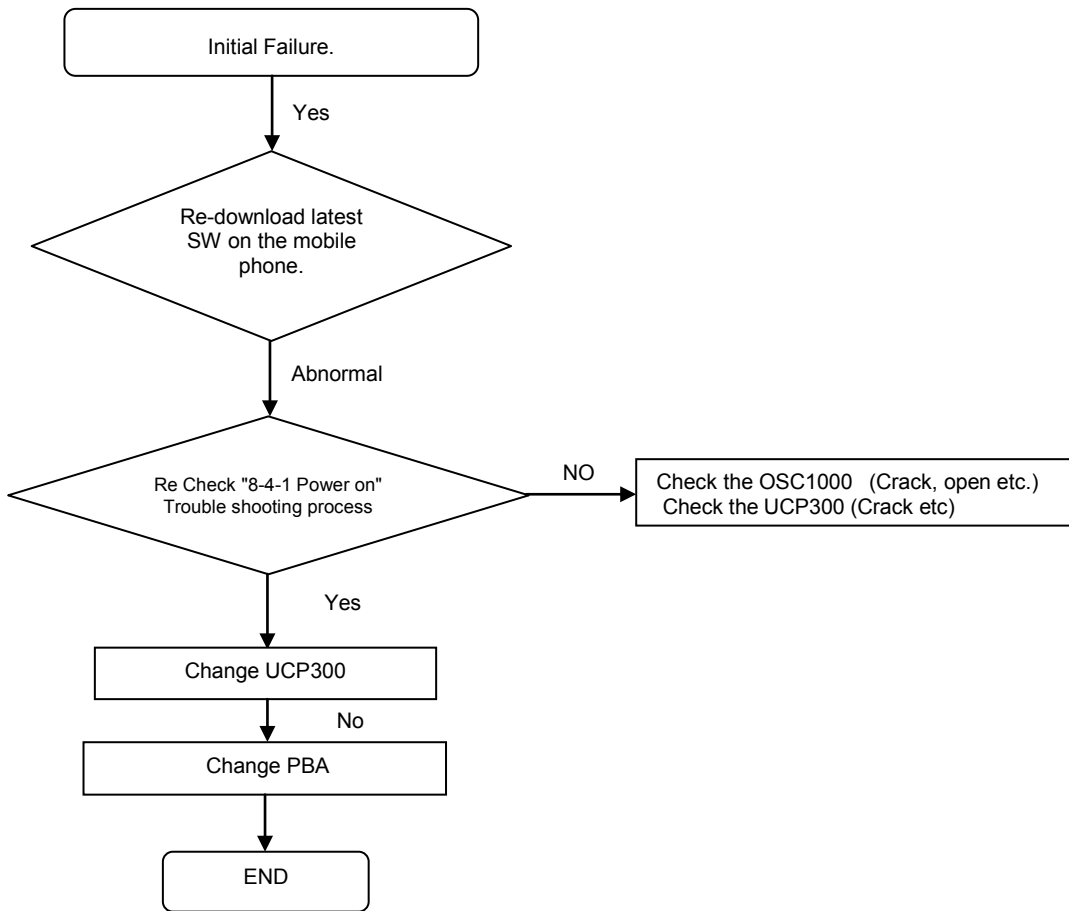
8. Level 3 Repair

8-4-1. Power On



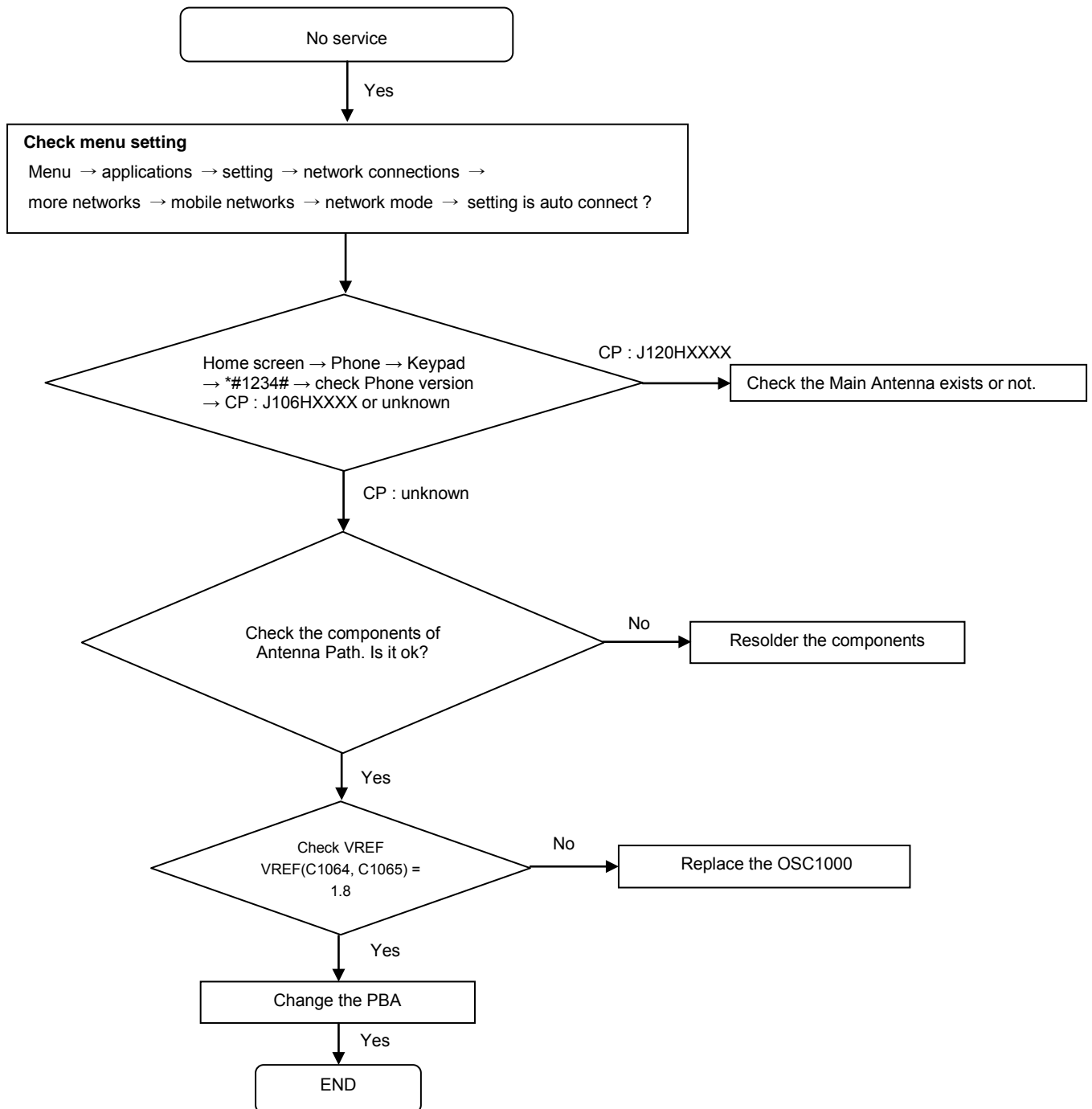
8. Level 3 Repair

8-4-2. Initial



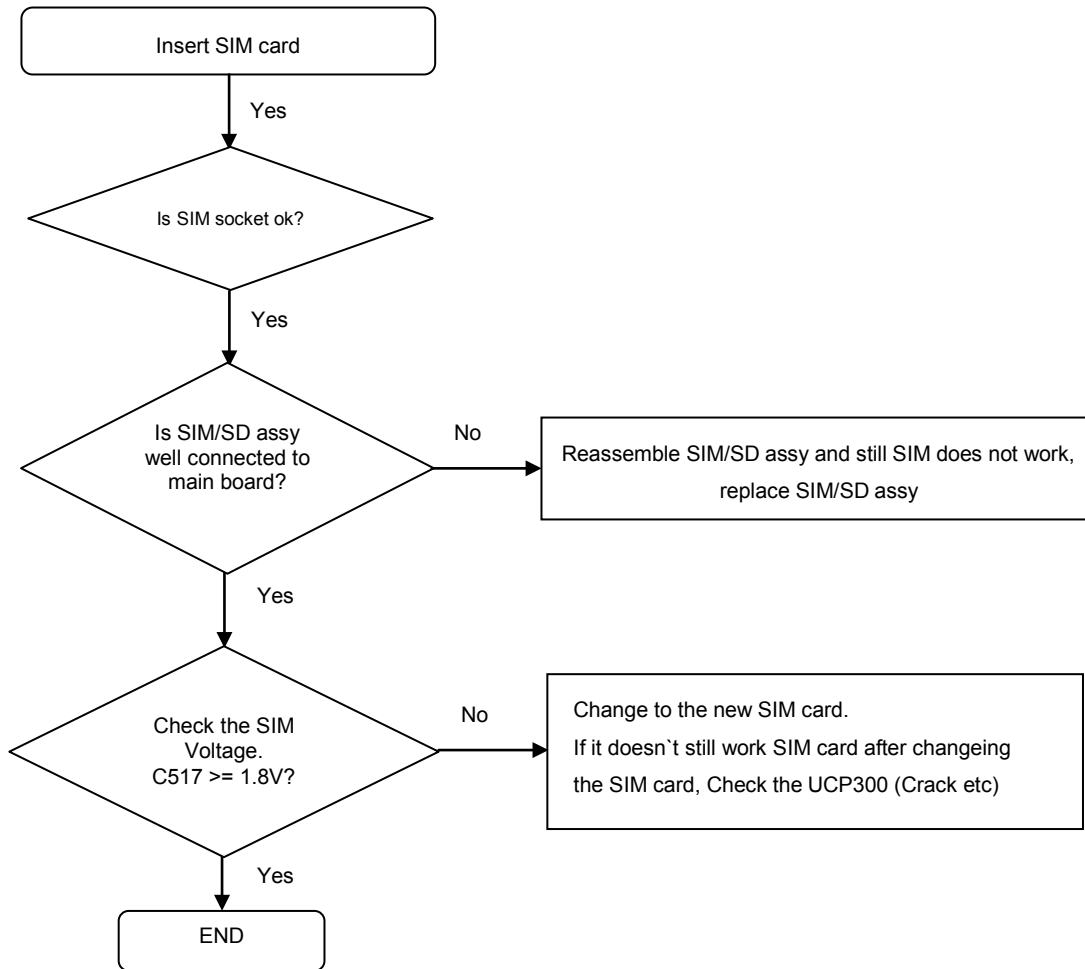
8. Level 3 Repair

8-4-3. No Service



8. Level 3 Repair

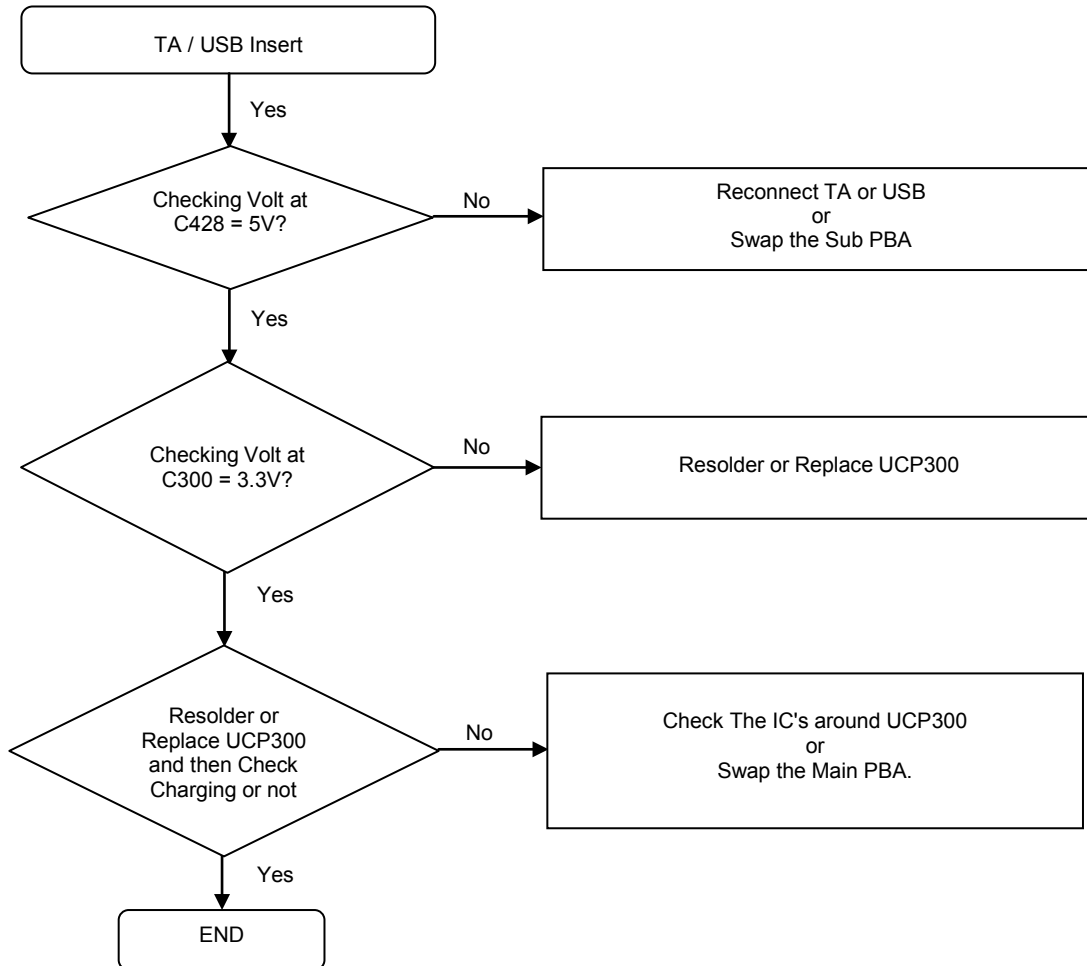
8-4-4. Sim Part



8. Level 3 Repair

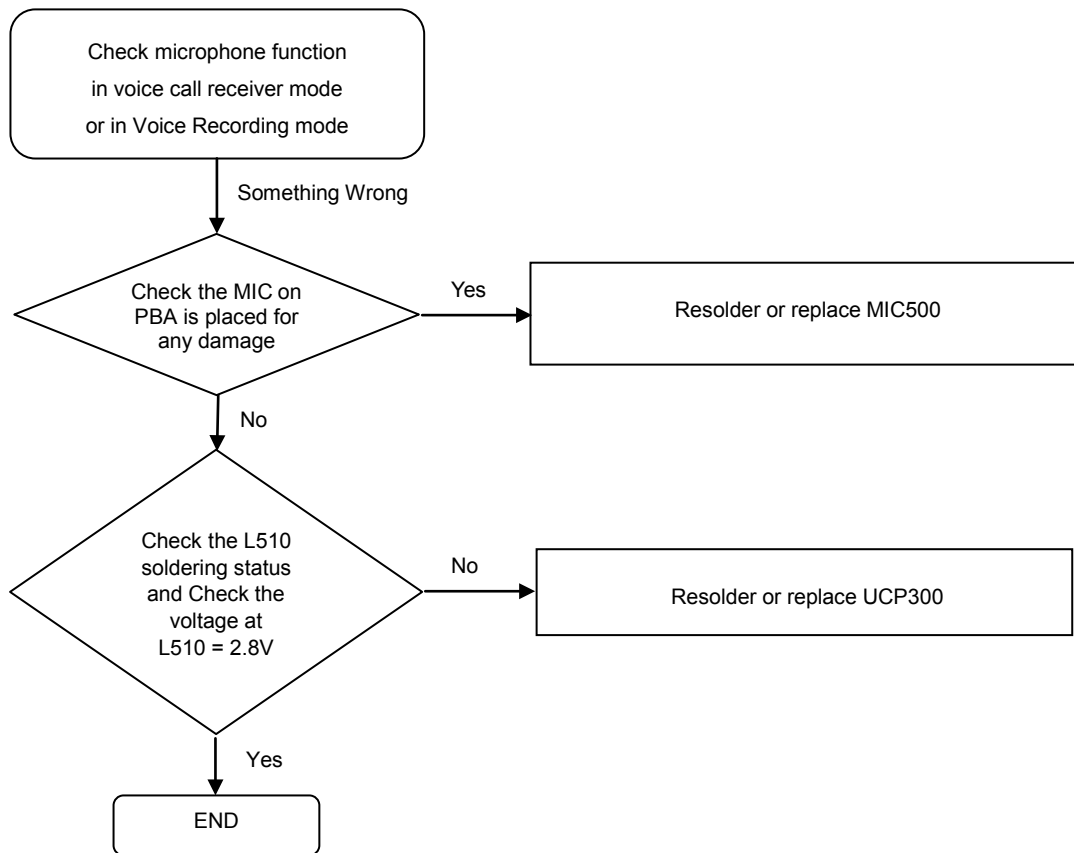
8-4-5. Charging Part

- First of all, Please check the battery status.



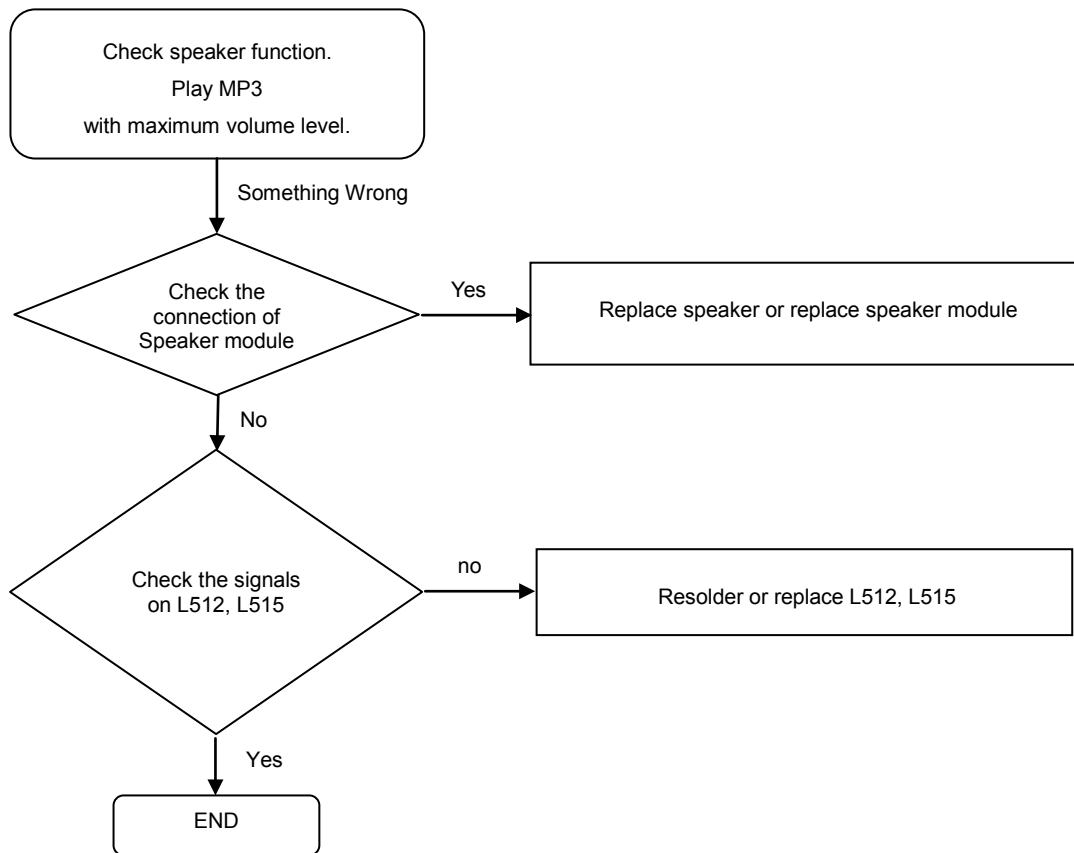
8. Level 3 Repair

8-4-6. Microphone Part



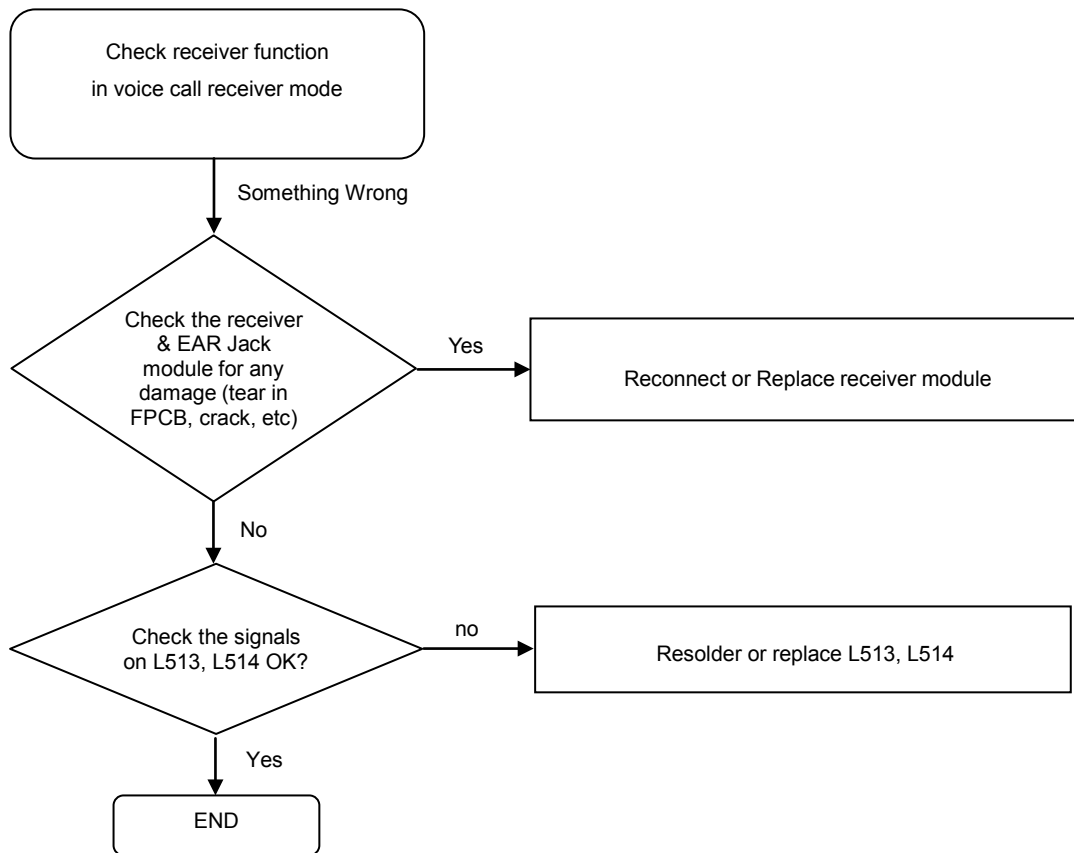
8. Level 3 Repair

8-4-7. Speaker Part



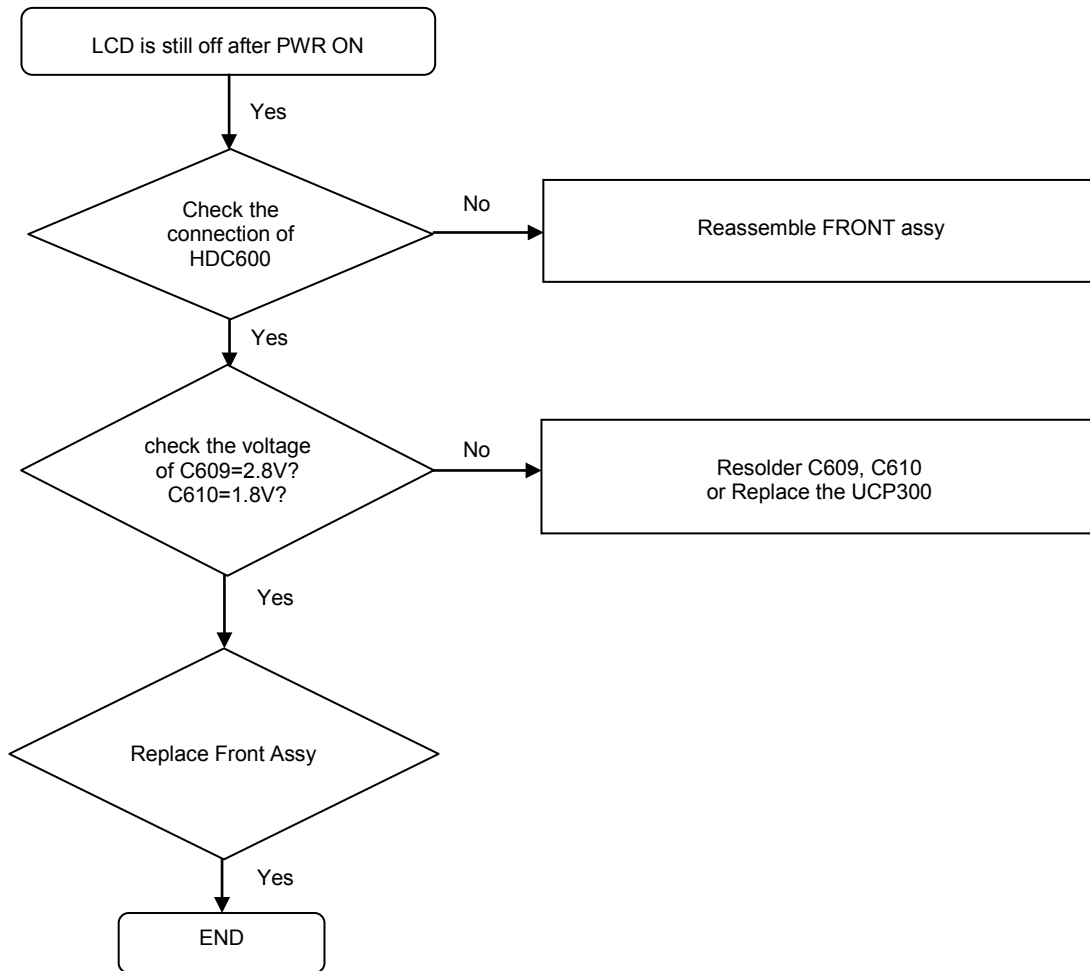
8. Level 3 Repair

8-4-8. Receiver Part



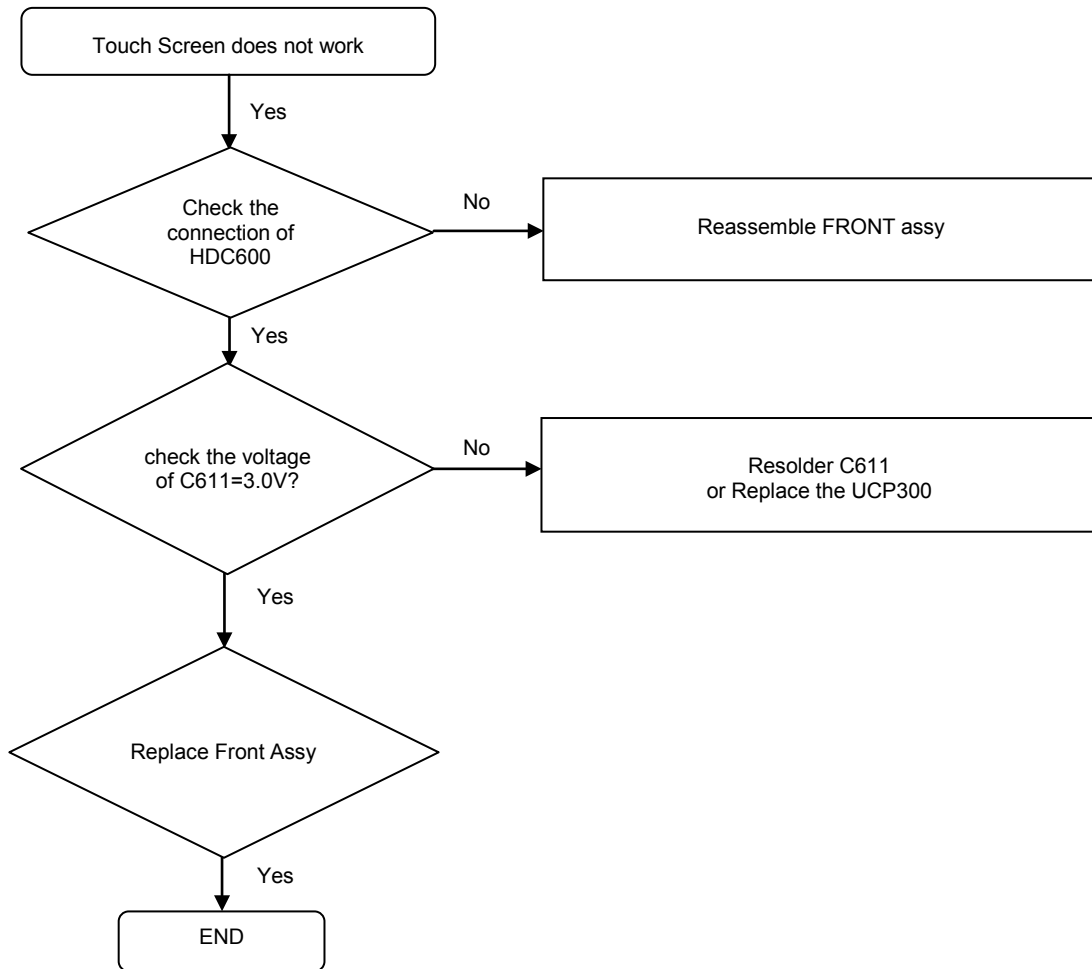
8. Level 3 Repair

8-4-9. LCD



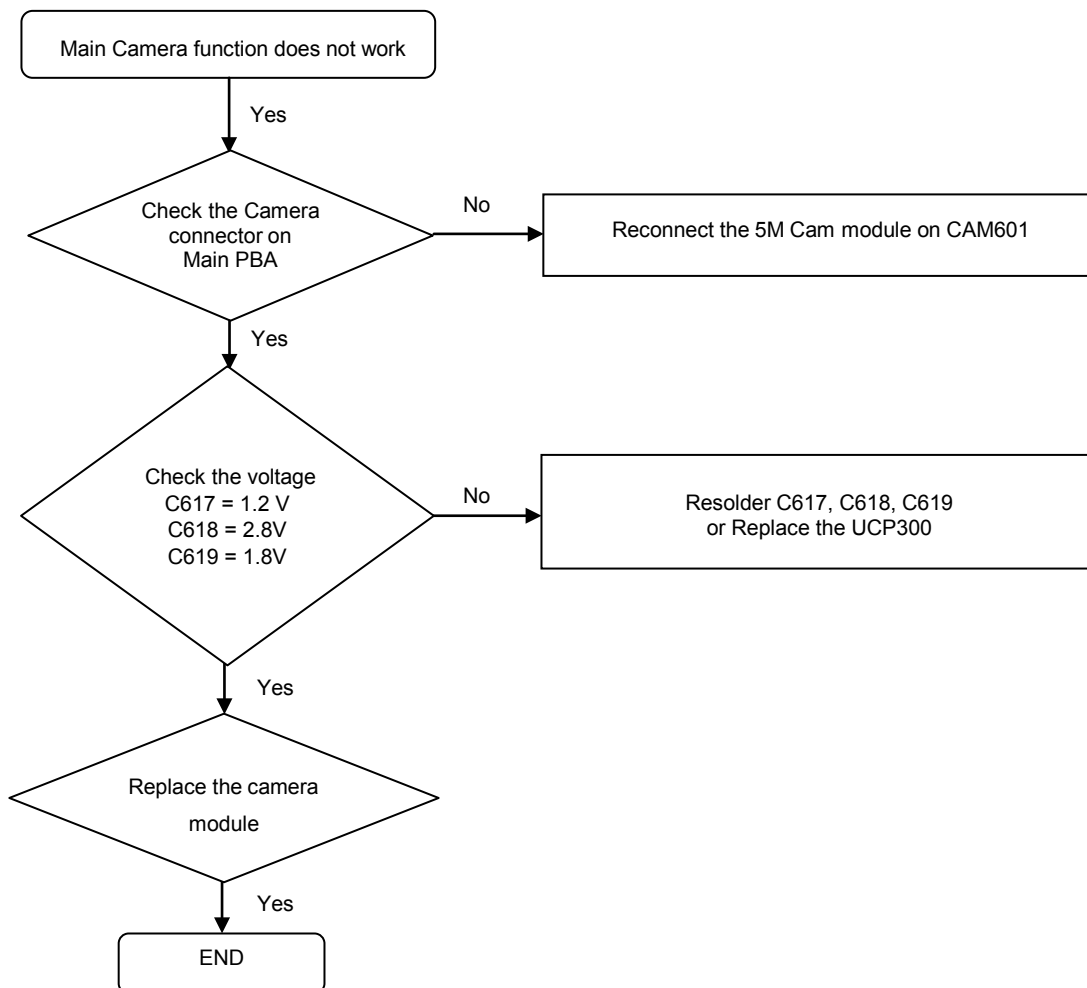
8. Level 3 Repair

8-4-10. TSP



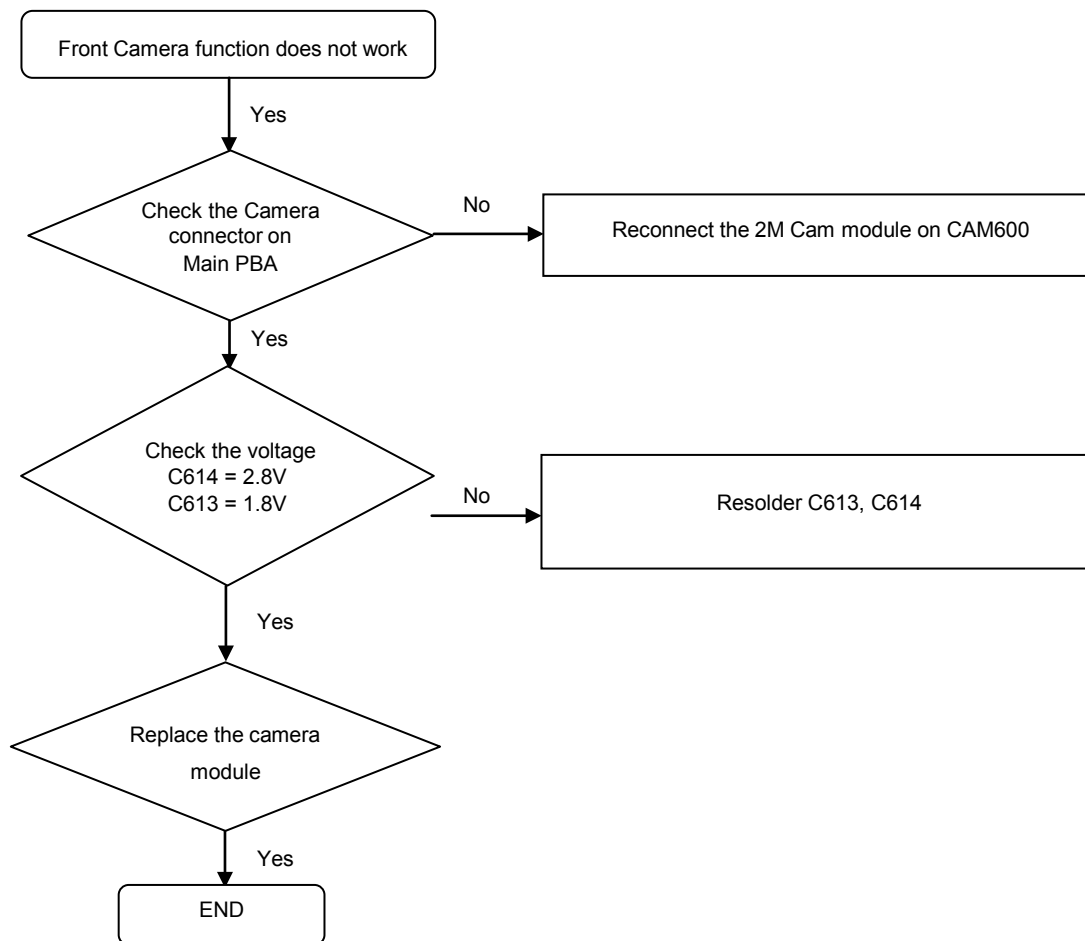
8. Level 3 Repair

8-4-11. 5M CAMERA



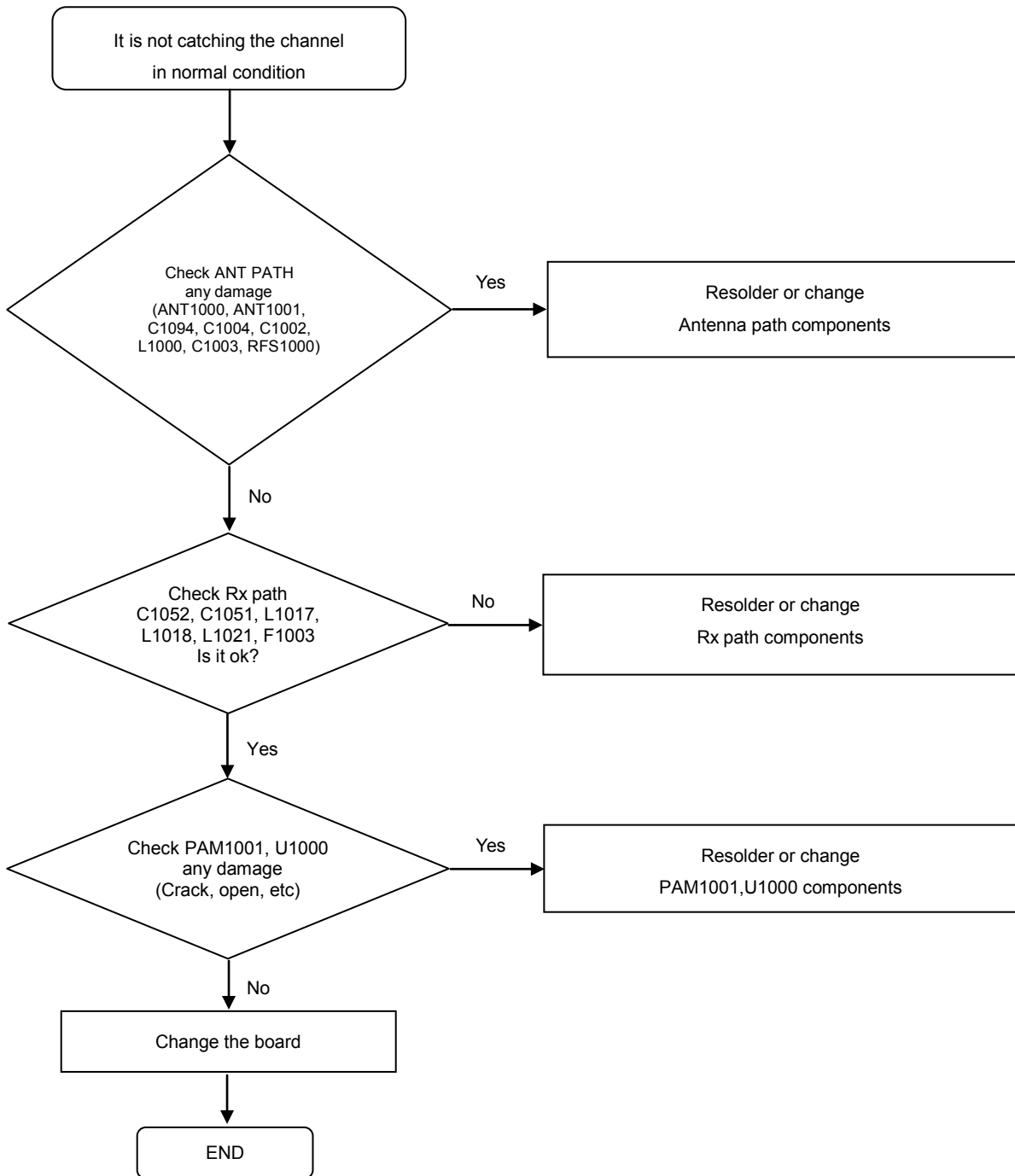
8. Level 3 Repair

8-4-12. 2M CAMERA



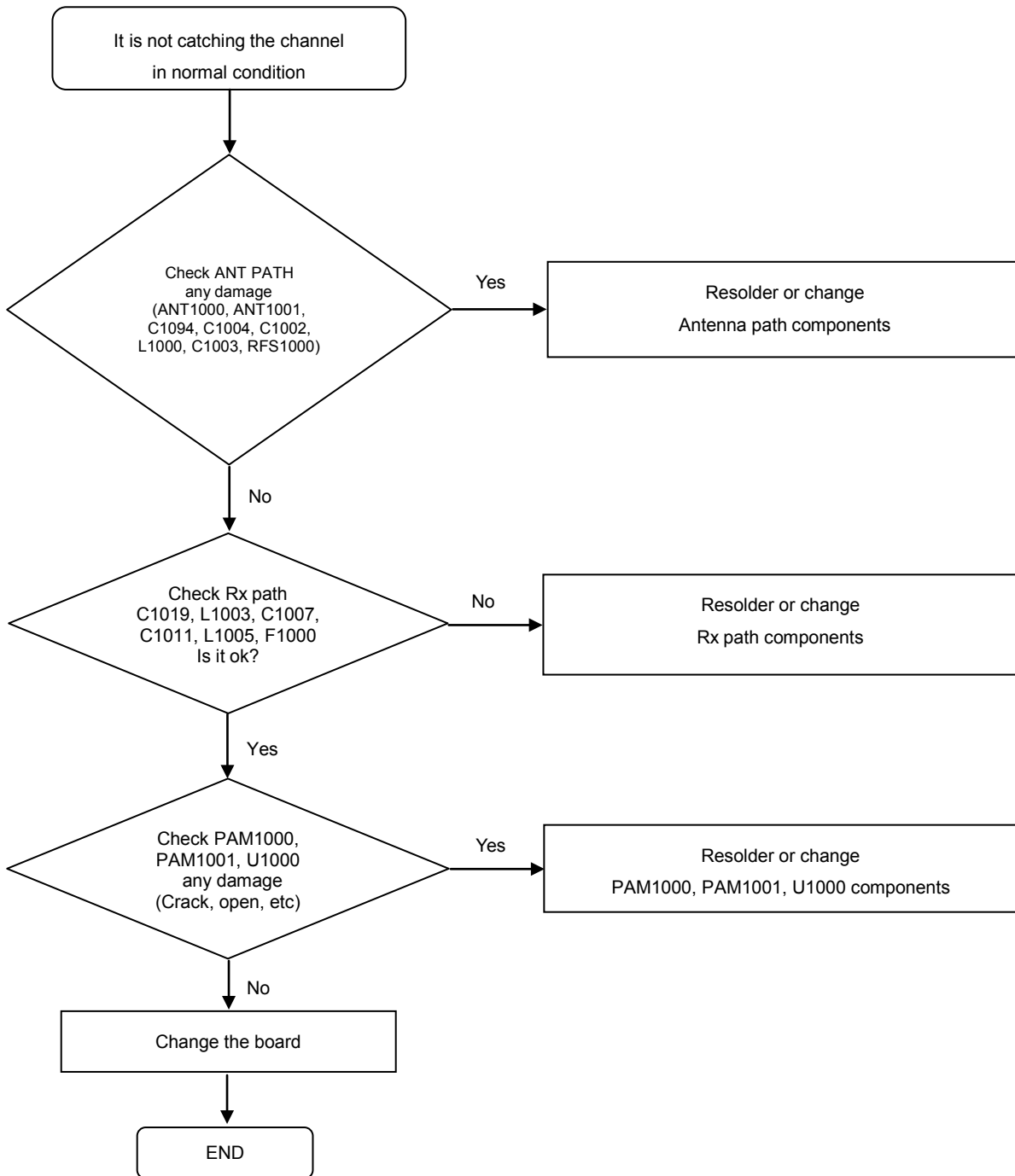
8. Level 3 Repair

8-4-13. GSM 850 / WCDMA 850 RX



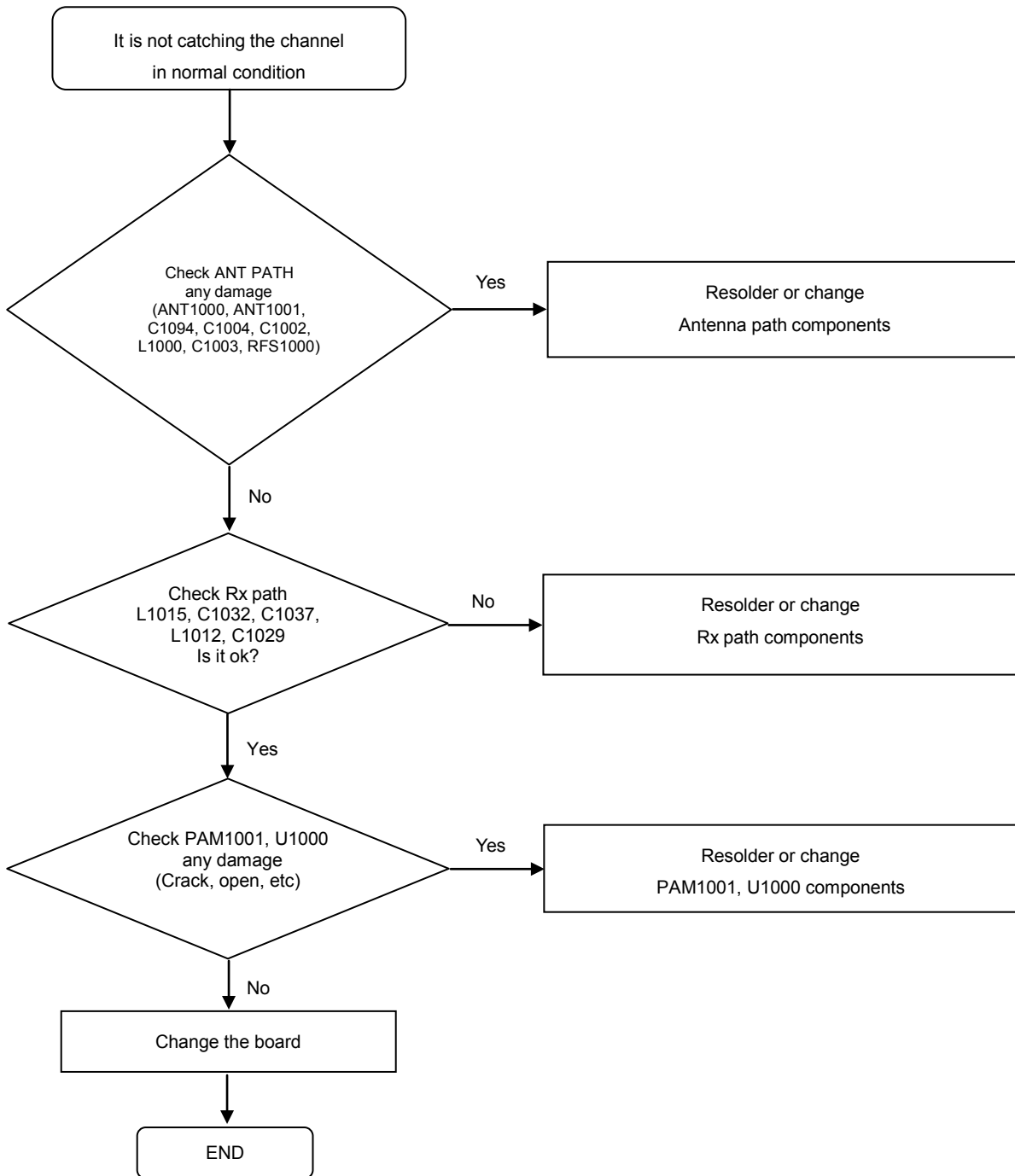
8. Level 3 Repair

8-4-14. GSM 900 / WCDMA 900 RX



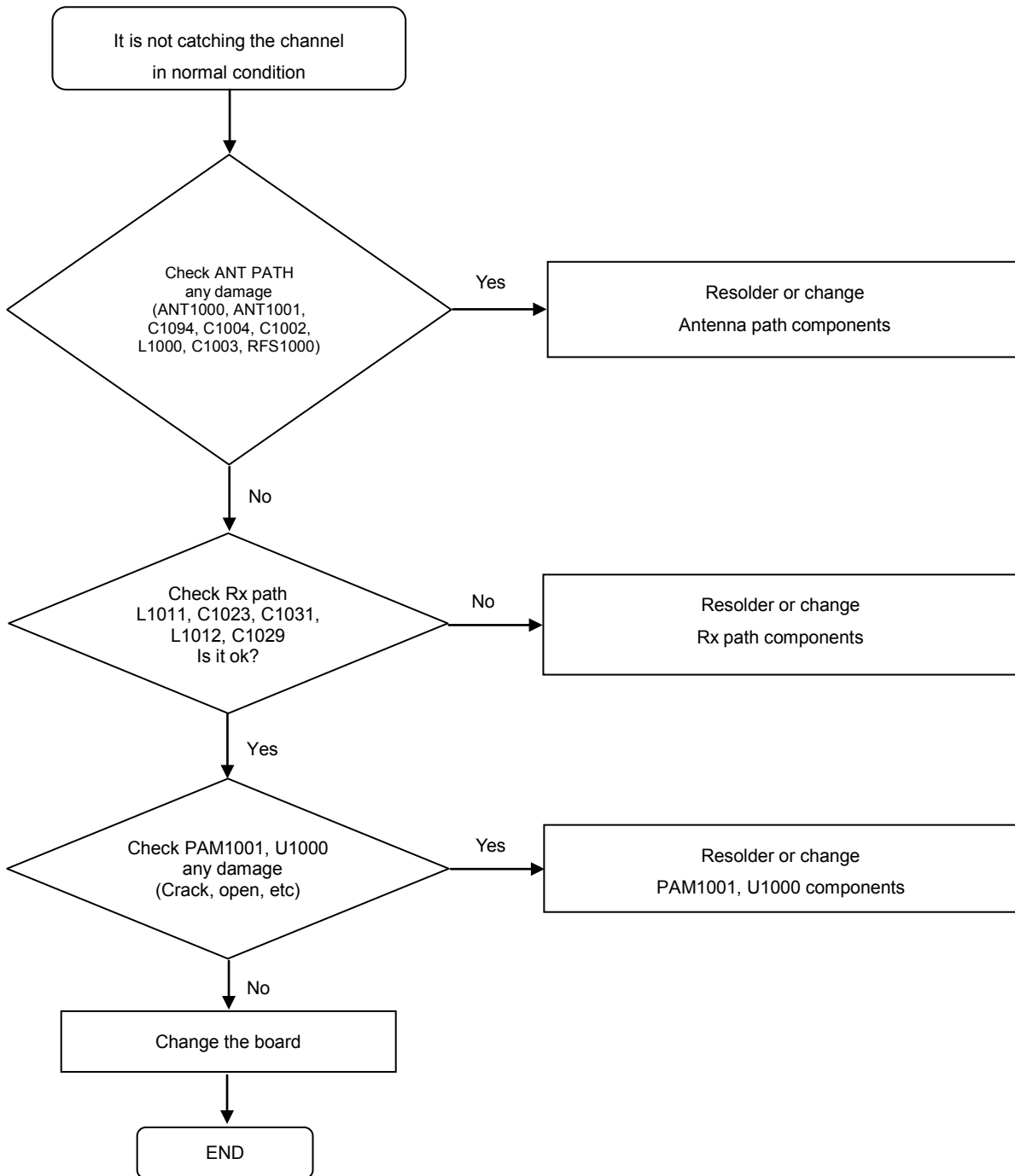
8. Level 3 Repair

8-4-15. GSM 1800 RX



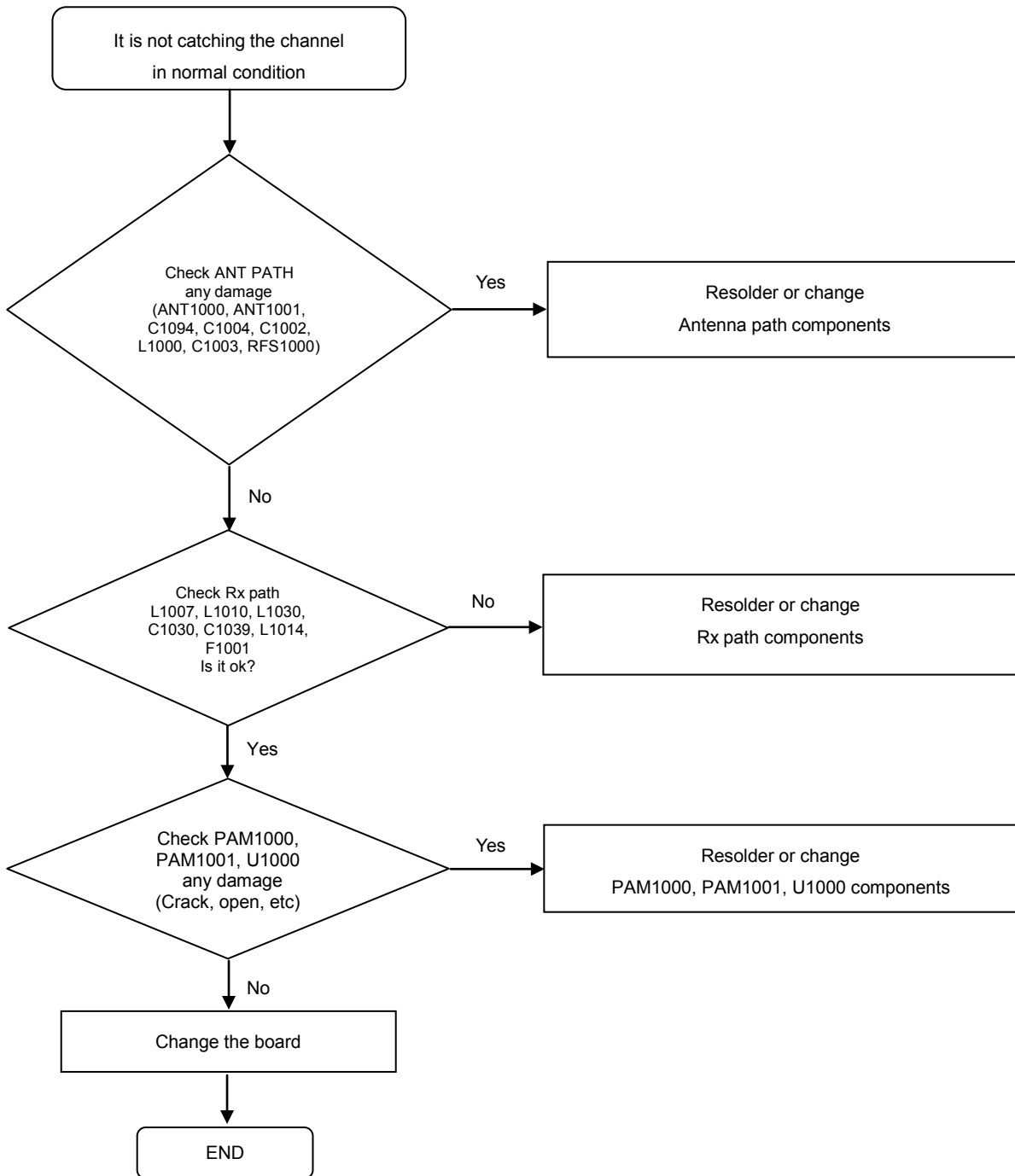
8. Level 3 Repair

8-4-16. GSM 1900 RX



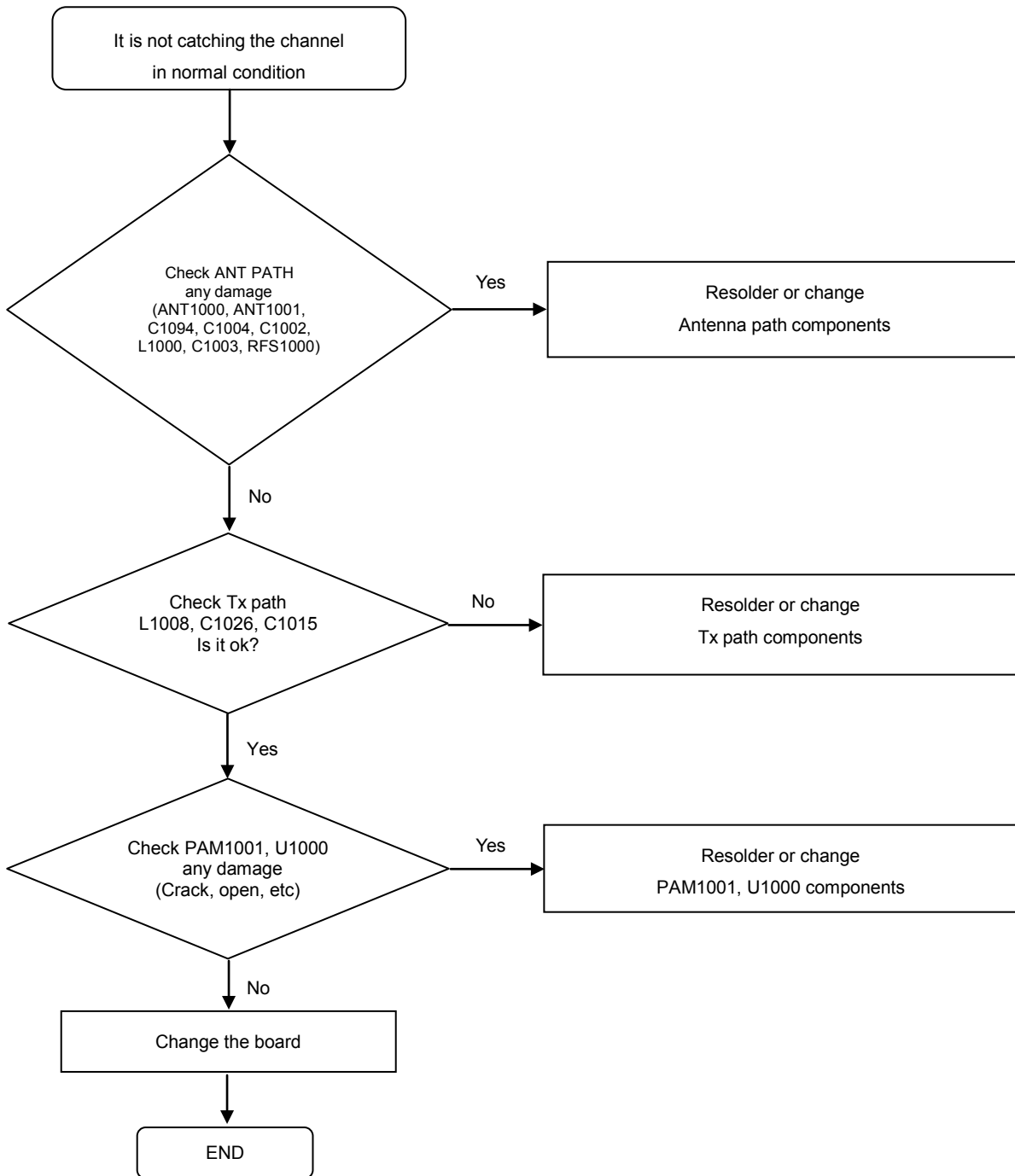
8. Level 3 Repair

8-4-17. WCDMA 2100 RX



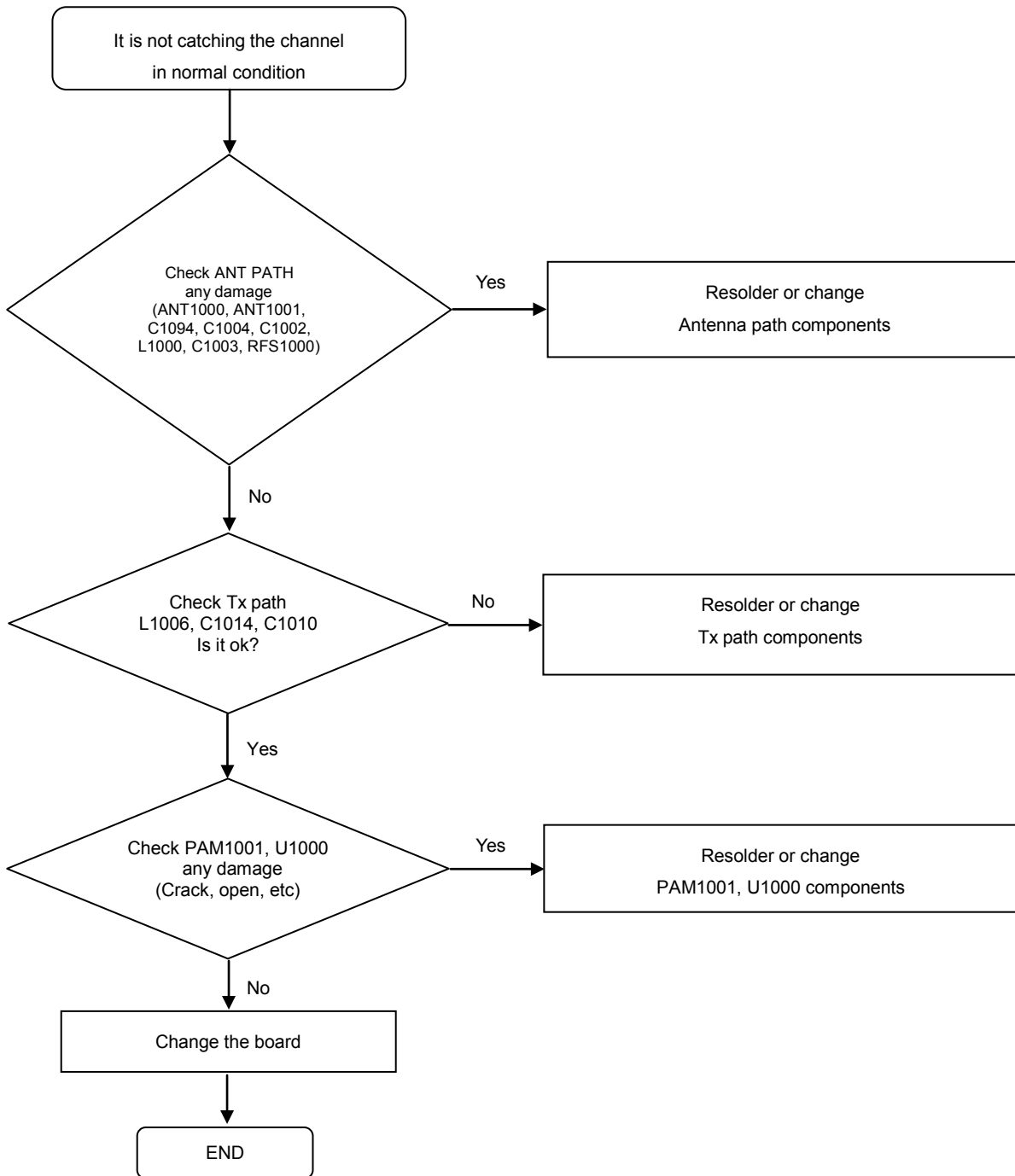
8. Level 3 Repair

8-4-18. GSM850/GSM900 TX



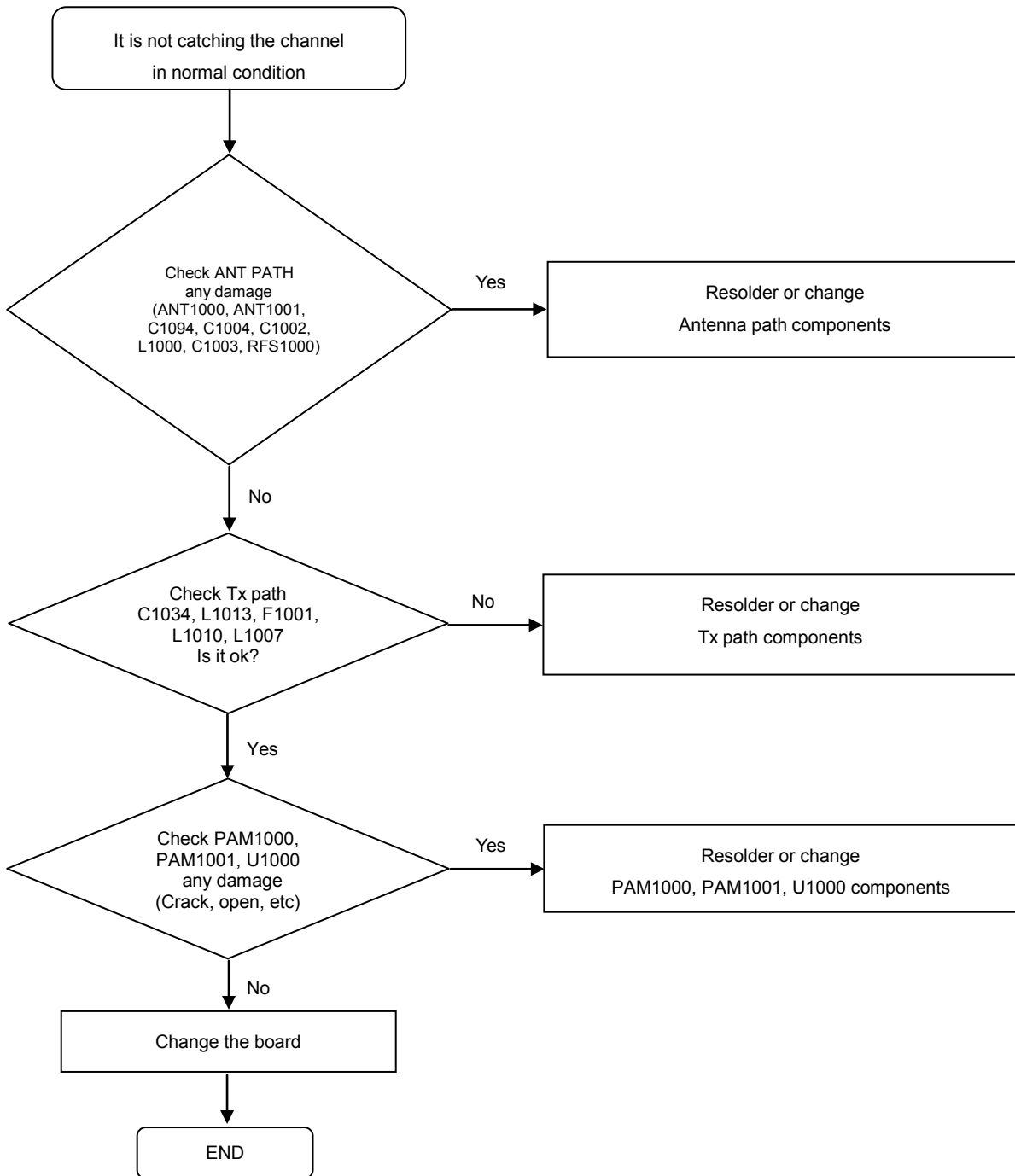
8. Level 3 Repair

8-4-19. GSM1800/GSM1900 TX



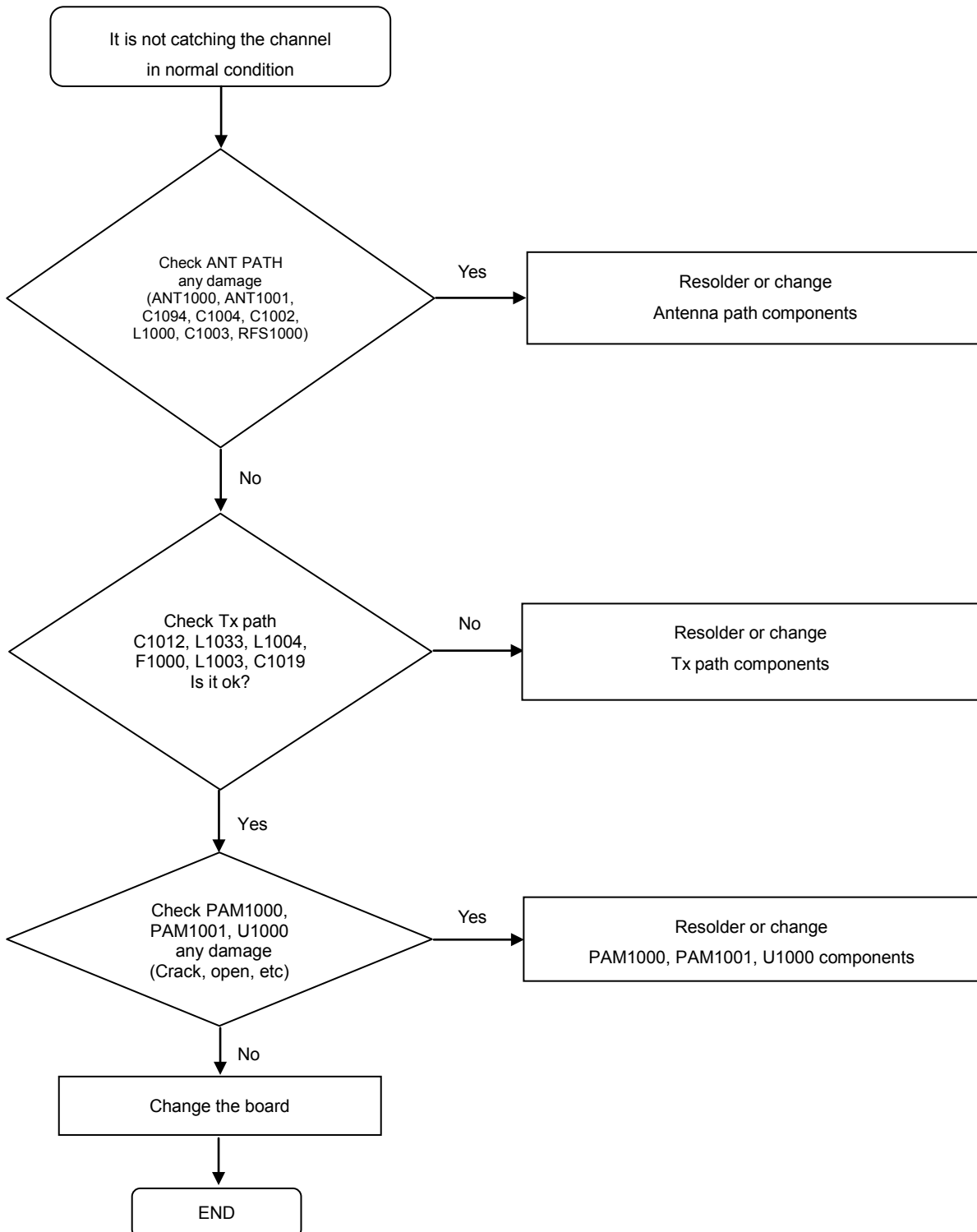
8. Level 3 Repair

8-4-20. WCDMA2100 TX



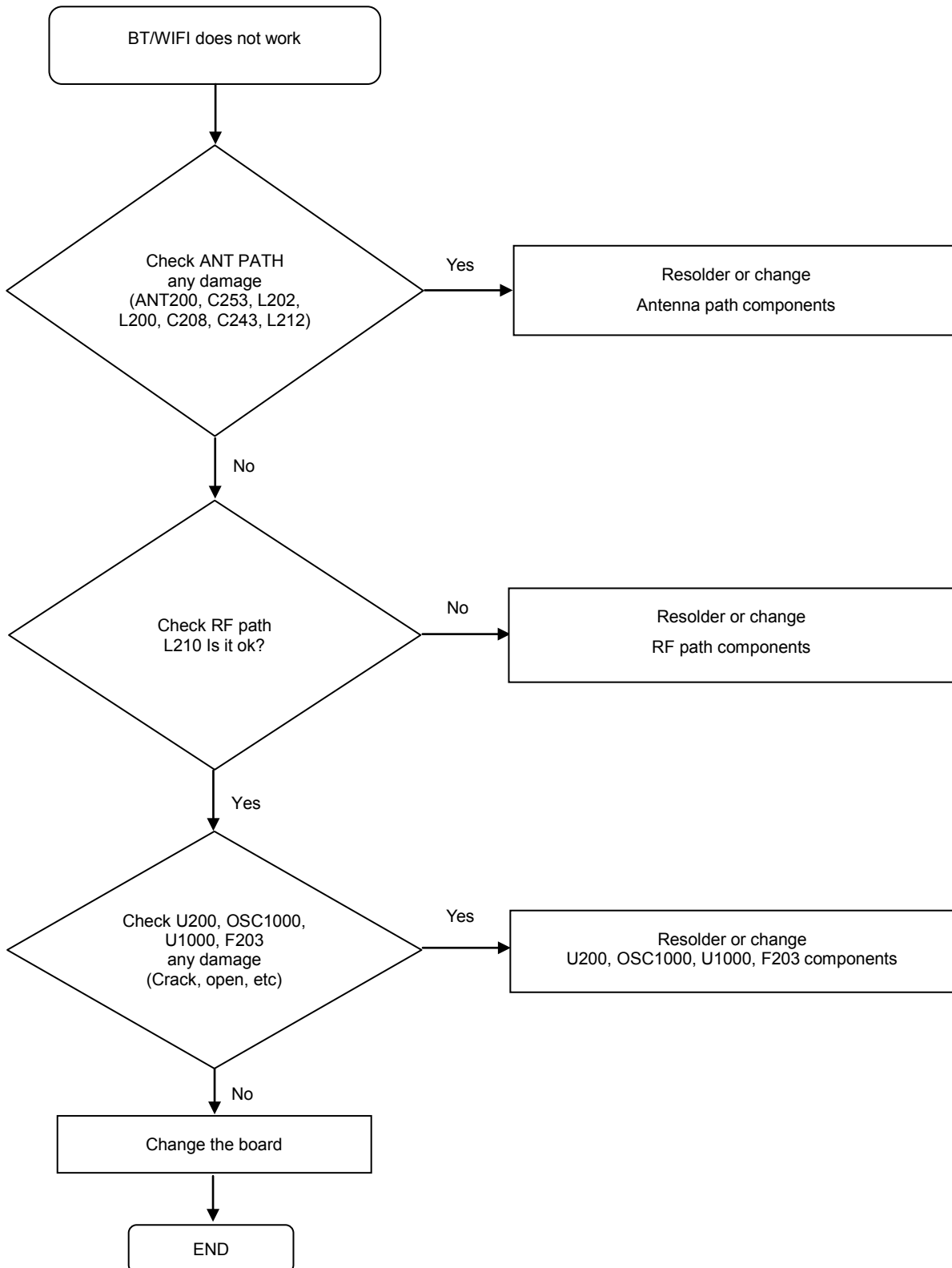
8. Level 3 Repair

8-4-21. WCDMA900 TX



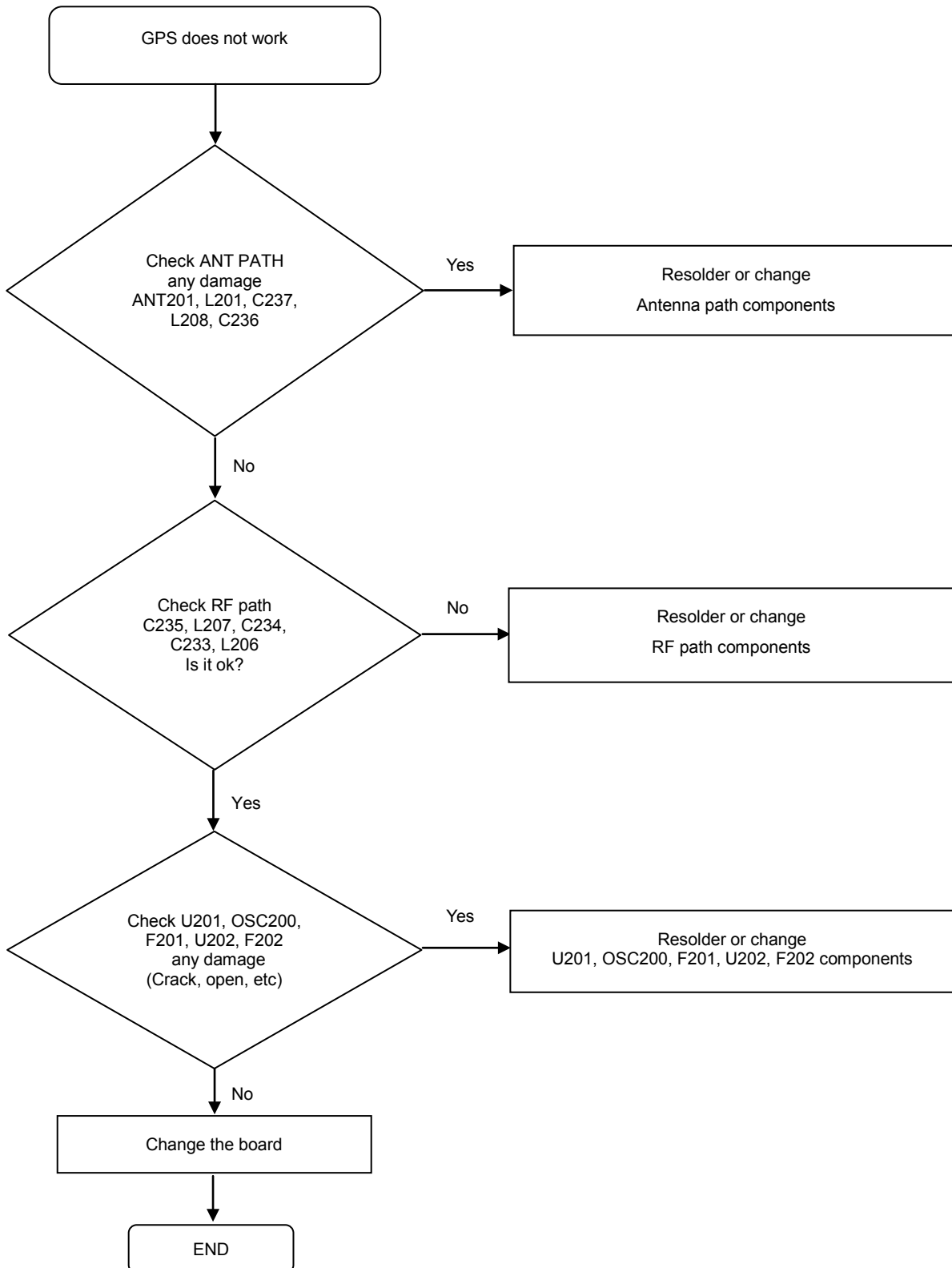
8. Level 3 Repair

8-4-22. BT/WLAN



8. Level 3 Repair

8-4-23. GPS



8. Level 3 Repair

8-4-24. FM RADIO

