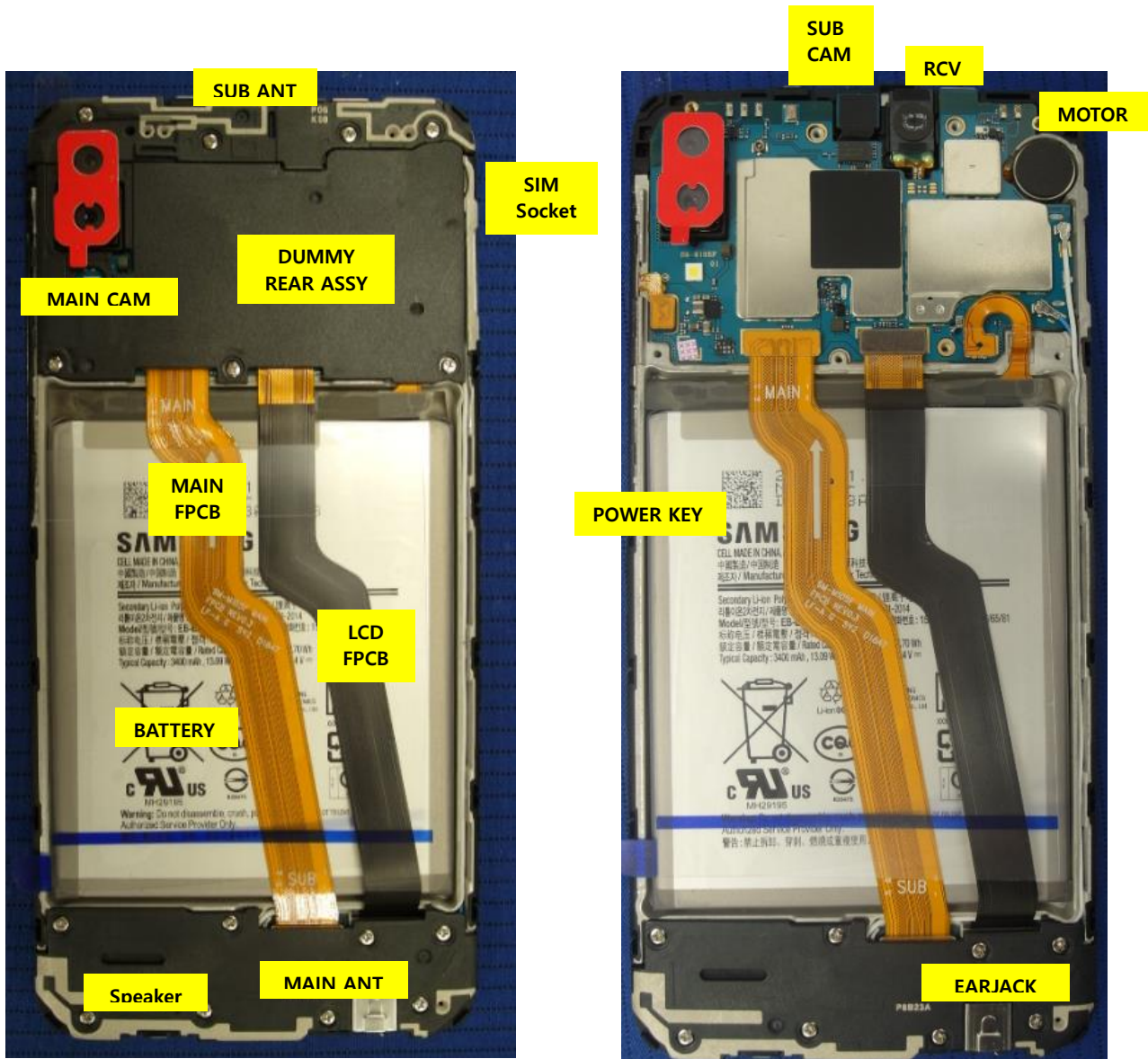


7. Level 2 Repair

7-1. Components on the Rear Case



7. Level 2 Repair

7-2. Pre-requisite

	
<p>Tweezers / Disass'y Stick / Screw Driver</p>	<p>Anti-static Gloves</p>
	
<p>Anti-static Mat</p>	<p>Hot Plate</p>
	
<p>A OCTA Disassembly Holder</p>	<p>OCTA Disassembly Upper</p>
	
<p>Ethyl Alcohol</p>	<p>Cotton Swab</p>

7. Level 2 Repair

7-3. Parts which must be changed after repair


BOM description & part code	Image	Remarks
<p>A/S-SVC SUB PBA TAPE [GH81-16626A]</p>		
<p>A/S-SVC TAPE MAIN CAM FLANGE [GH81-16640A]</p>		<p>Replace for MAIN PBA SUB PBA</p>

7. Level 2 Repair

7-4. Disassembly

1

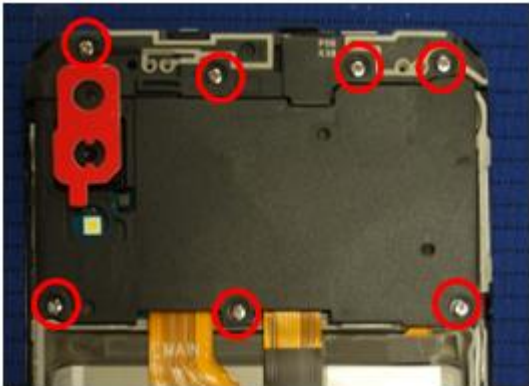
- 1) Disassemble the SIM tray.
- 2) Detach the Rear disassembling hook.
(sequence: right → left → top → bottom)



※ **Caution**
Be care of scratch

2

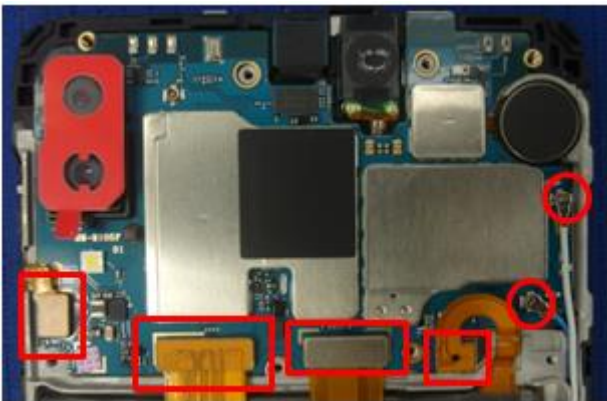
- 1) Unscrew 7 Point.
- 2) Disassemble SUB ANT
- 3) Disassemble dummy Rear.



※ **Caution**
Be care of scratch

3


Disassemble 4 Point connector and 2 Point coaxial cable connector of PBA.



※ **Caution**
Be care of connector damage

4

- 1) Unscrew 1 Point.
- 2) Detach the PBA.

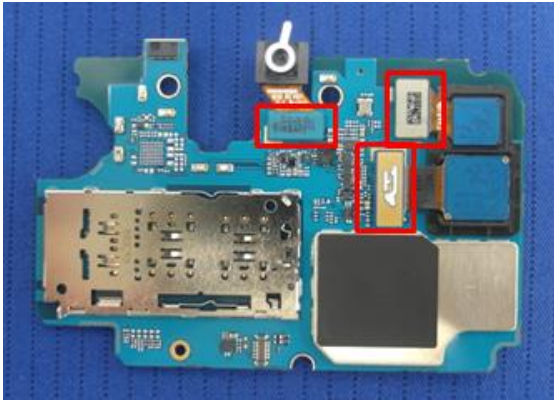


※ **Caution**
Be care of scratch

7. Level 2 Repair

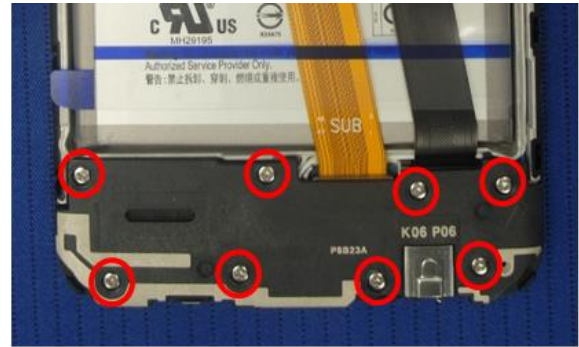
5

Disassemble the MAIN CAM(2 connector) and SUB CAM.



6

1) Unscrew PBA 8 points.
2) Detach MAIN ANT.



※ Caution

- 1) Be care of scratch
- 2) Be care of connector damage
- 3) Be careful not to damage the PBA

※ Caution

Be care of scratch

7

1) Disassemble 1 connector 2 coaxial cable connector.
2) Detach the SUB PBA.



※ Caution

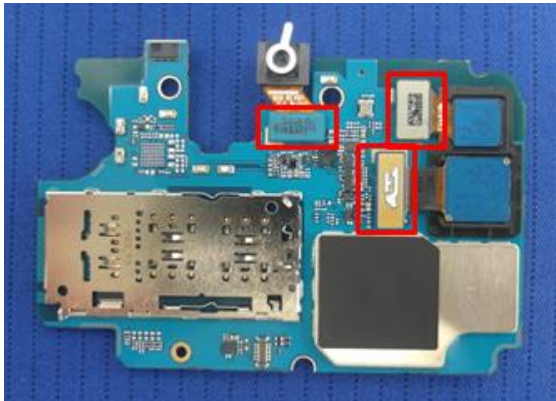
- 1) Be care of scratch
- 2) Be care of connector/cable damage
- 3) Be care of damage of PBA.

7. Level 2 Repair

7-5. Assembly

1

- 1) Assemble the MAIN CAM.
- 2) Assemble the SUB CAM.



2

- 1) Attach SUB PBA on Front.
- 2) Assemble the MAIN FPCB and 2 coaxial cable.
- 3) Line coaxial cable up following the Front.



※ **Caution**
Be care of PBA damage.

※ **Caution**
Be care of SUB PBA damage

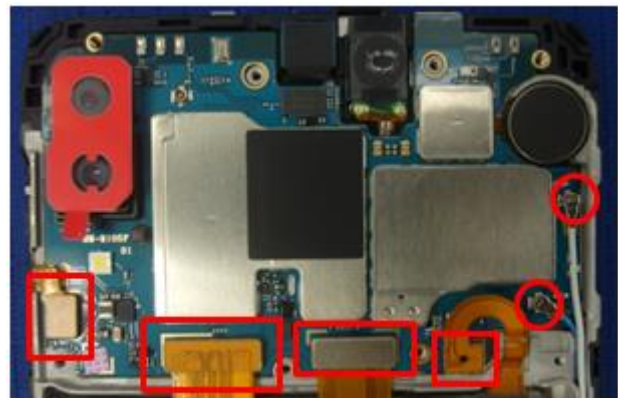
3

- Screw 8 point in SUB PBA.
* Torque Value : 1.1kgfcm
* Size : M1.4 * L3.0 (6001-003226)



4

- 1) Attach the PBA
- 2) Assemble 4 point connector and 2 point coaxial cable connector.



※ **Caution**
1) Be care of FPCB damage and tilt
2) Be care of press power/time

※ **Caution**
Be care of PBA damage

7. Level 2 Repair

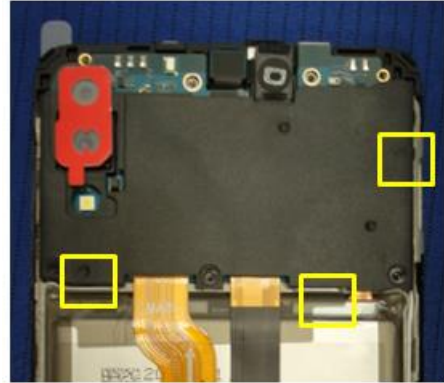
5

Screw insertion 1 Point.
* Torque Value : 0.95 ± 0.06 kgfcm
* Size : M1.4 * L2.0 (6001-001695)



6

Assemble the dummy REAR in sequence.
(3 point Hook)



DUMMY REAR HOOK

※ Caution

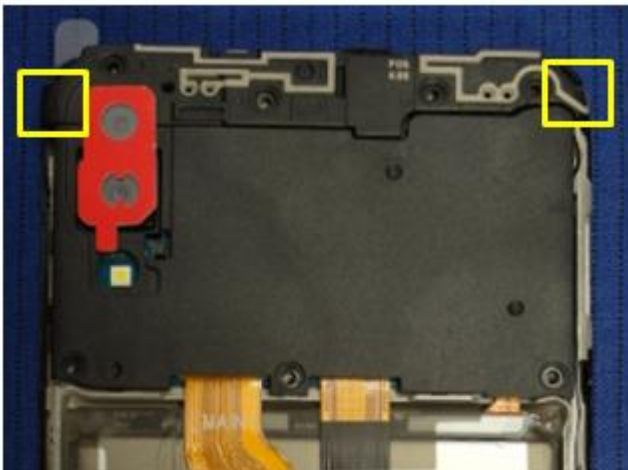
- 1) Be care of chip damage nearby screw point
- 2) Be care of press power/time

※ Caution

- Be care of scratch and dummy REAR damage

7

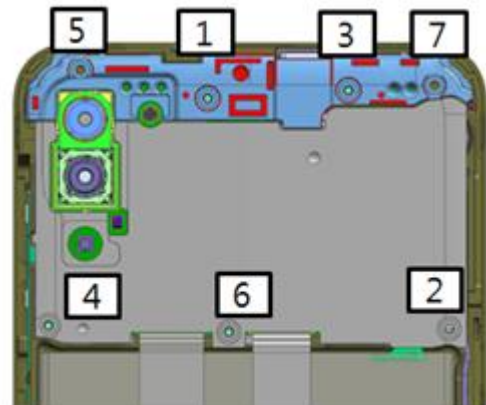
Assemble SUB ANT in sequence.
(2 point Hook)



SUB ANTENNA HOOK

8

Screw insertion 7 Point.
* Torque Value : 1.1 ± 0.1 kgfcm
* Size : M1.4 * L3.0 (6001-003226, silver)



※ Caution

- Be care of scratch SUB ANT damage

※ Caution

- 1) Be care of dummy Rear and SUB ANT damage
- 2) Be care of press power/time

7. Level 2 Repair

9

- 1) Assemble the REAR.
* Bottom → Left upside → Top → right upside .
- 2) Check the volume key and power key.



※ Caution

Do not press a S-Pen cover over 5 seconds to prevent display damage.