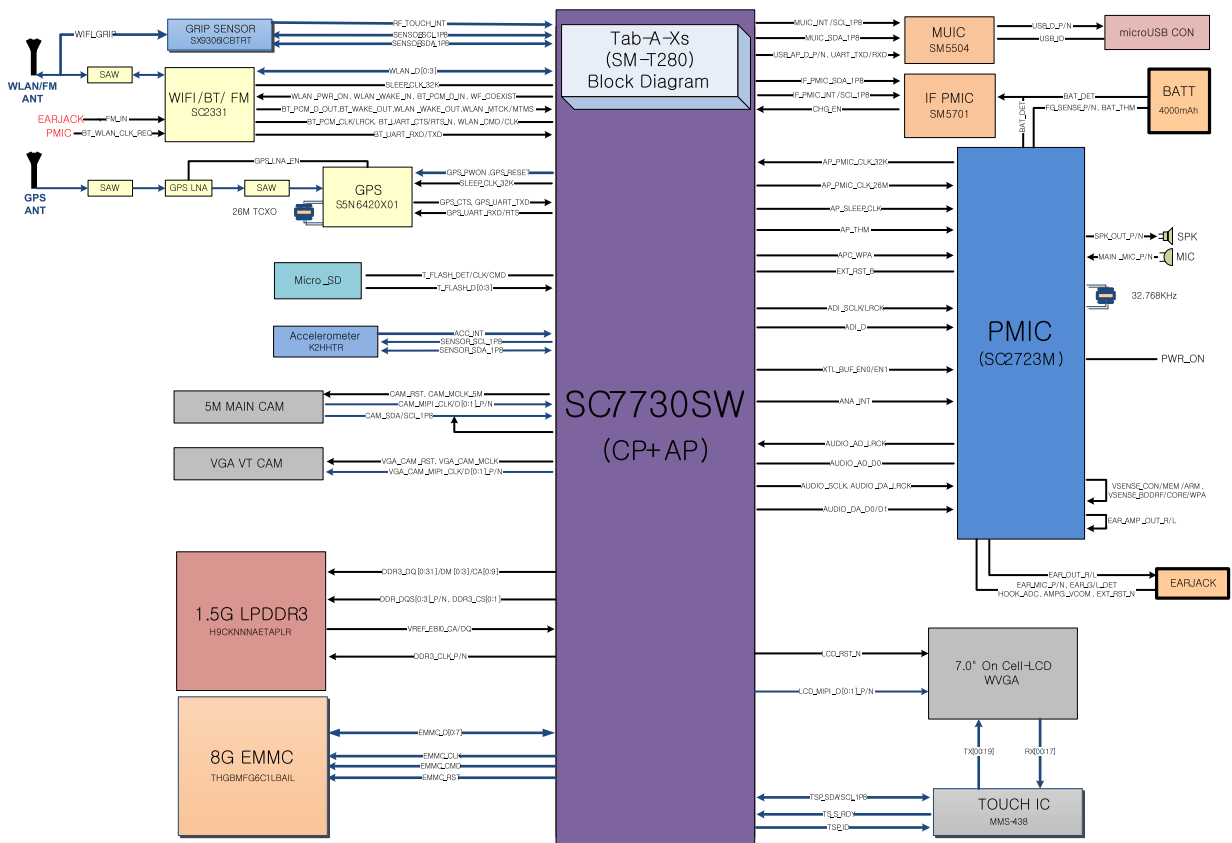
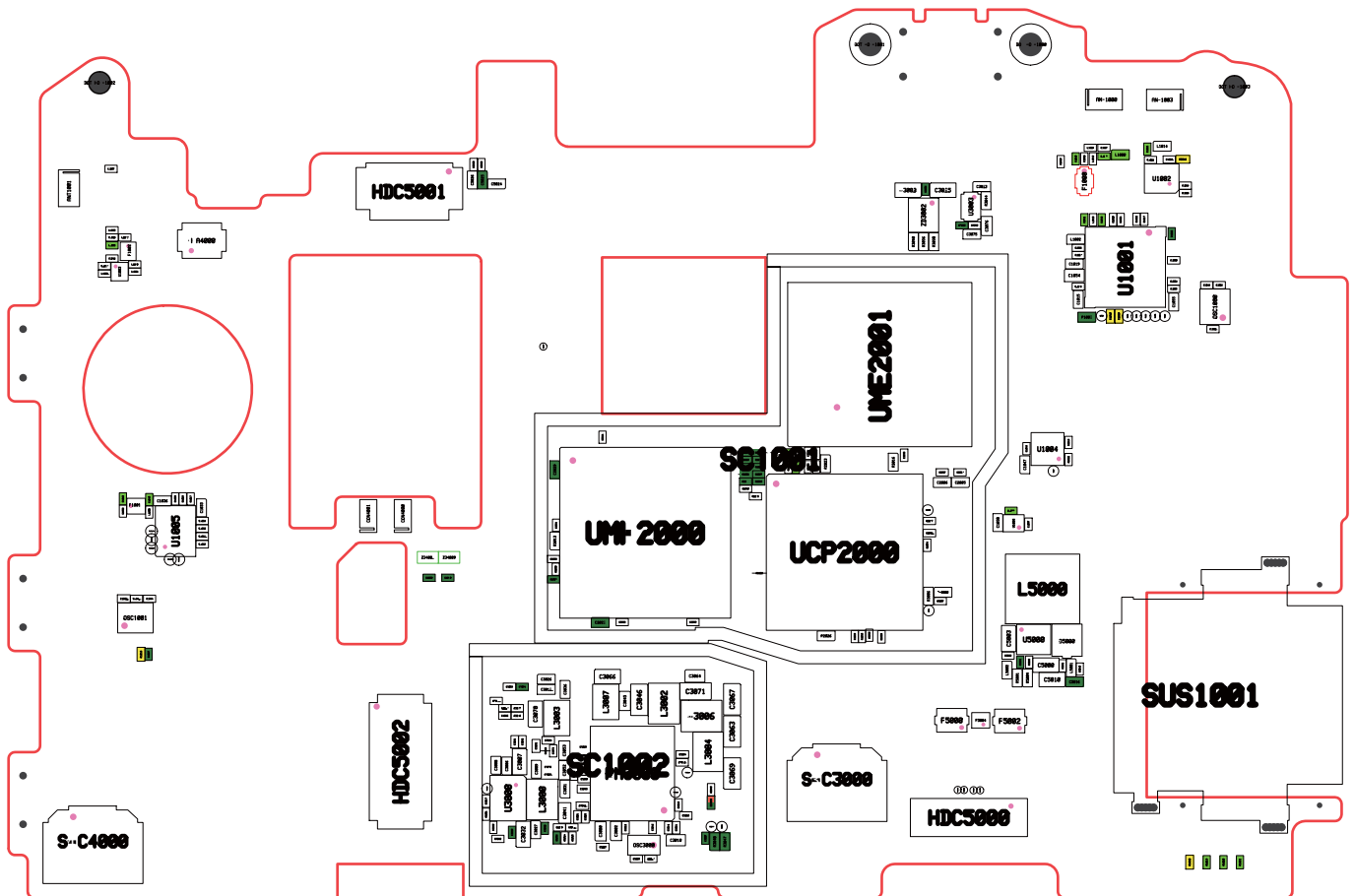


8-2. Block Diagram



8. Level 3 Repair (VIETMOBILE.VN)

TOP

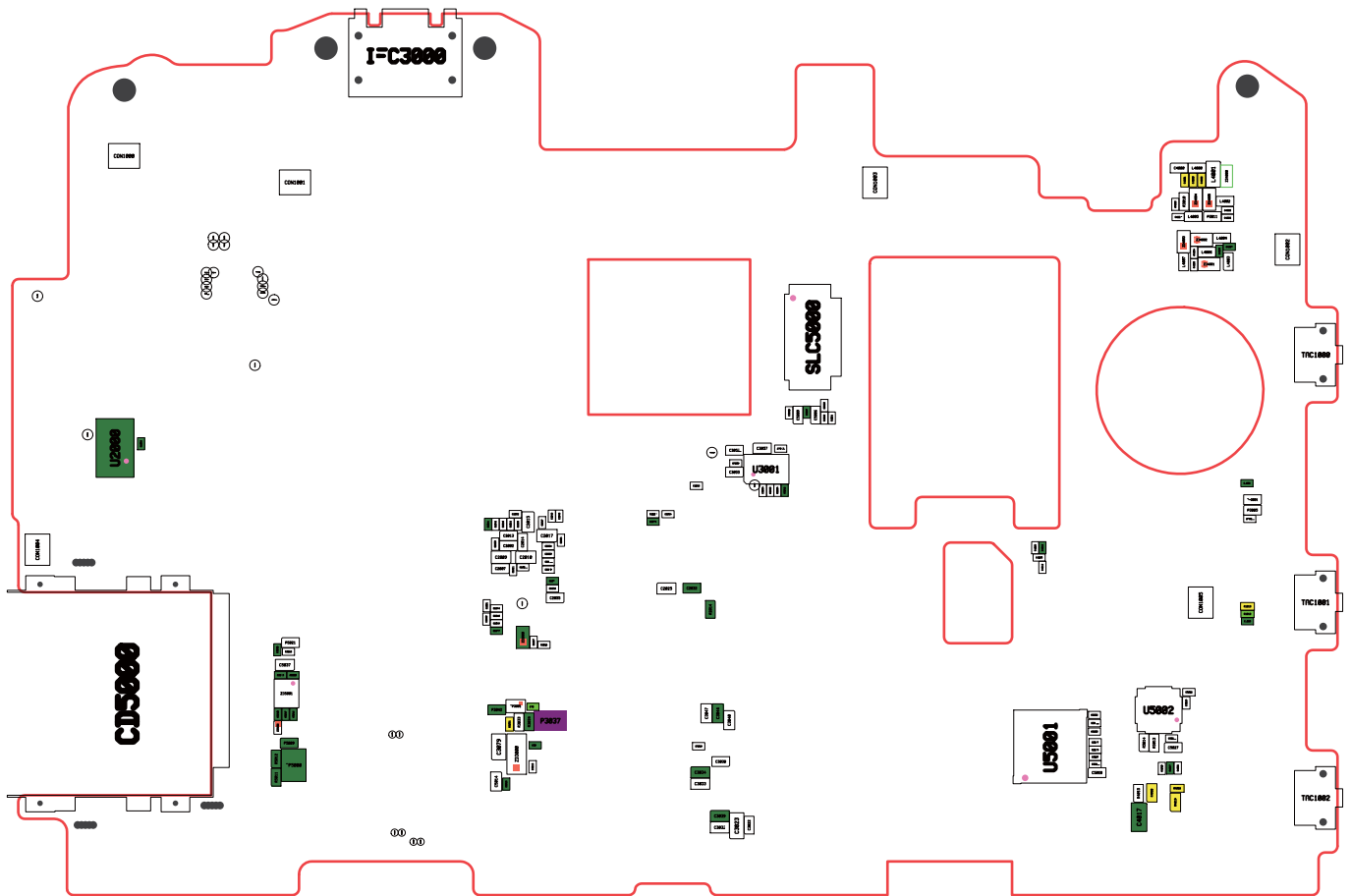


Confidential and proprietary-the contents in this service guide subject to change without prior notice

Distribution, transmission, or infringement of any content or data from this document without Samsung's written authorization is strictly prohibited.

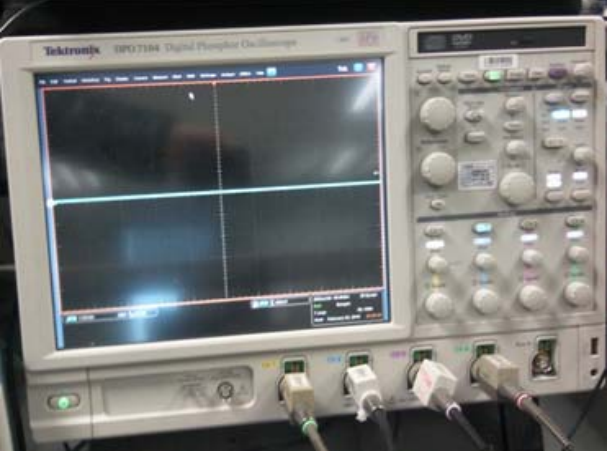



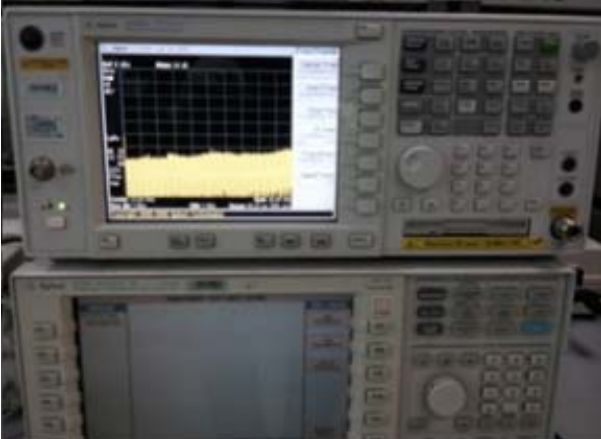

8. Level 3 Repair (VIETMOBILE.VN)

BOTTOM



8. Level 3 Repair

8-3. Flow Chart of Troubleshooting

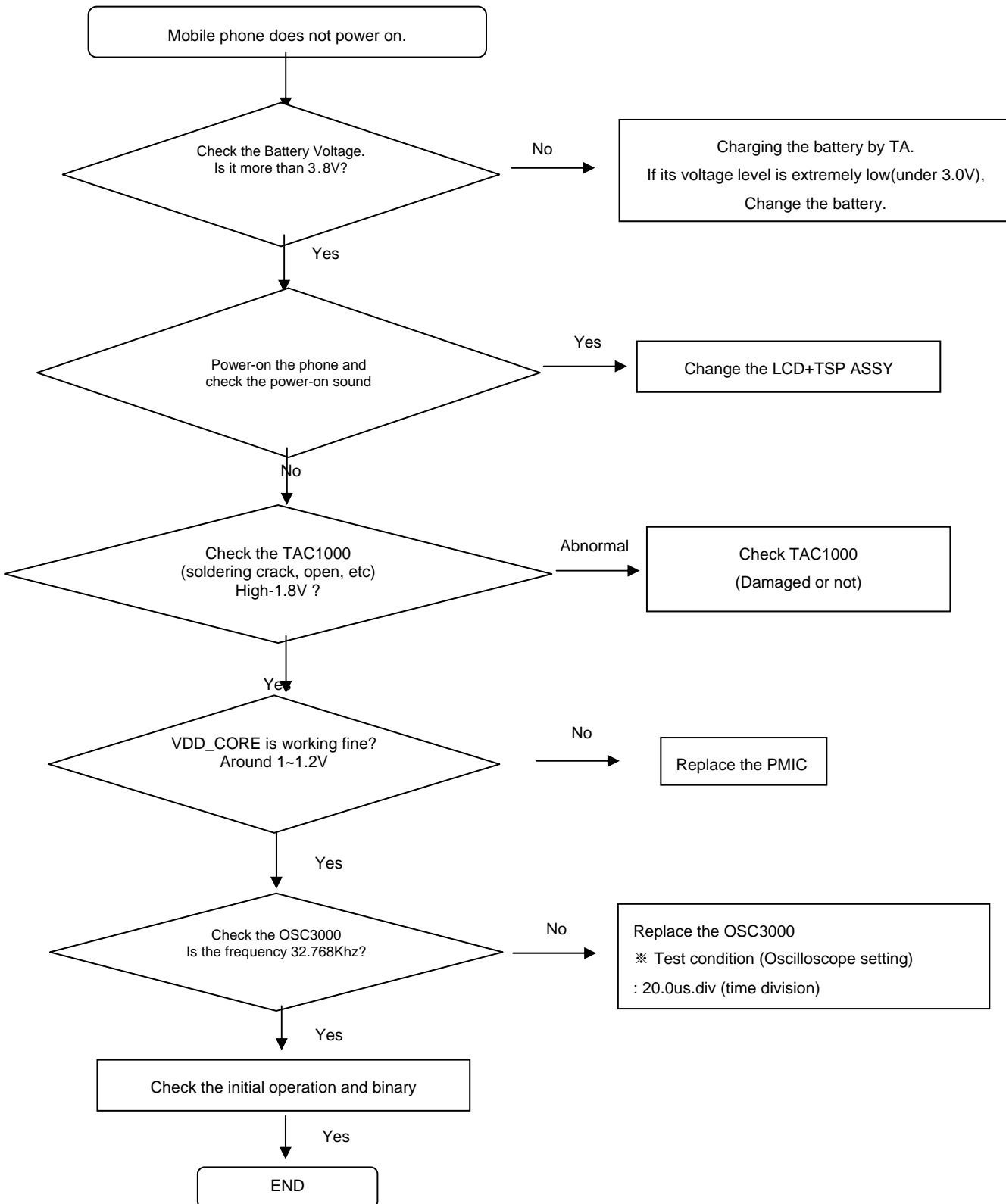
	
Oscilloscope	Digital Multimeter
	
Power Supply	+ driver, ESD Safe Tweezer
	
8960 & Spectrum Analyzer	Soldering iron

Confidential and proprietary-the contents in this service guide subject to change without prior notice

Distribution, transmission, or infringement of any content or data from this document without Samsung's written authorization is strictly prohibited.

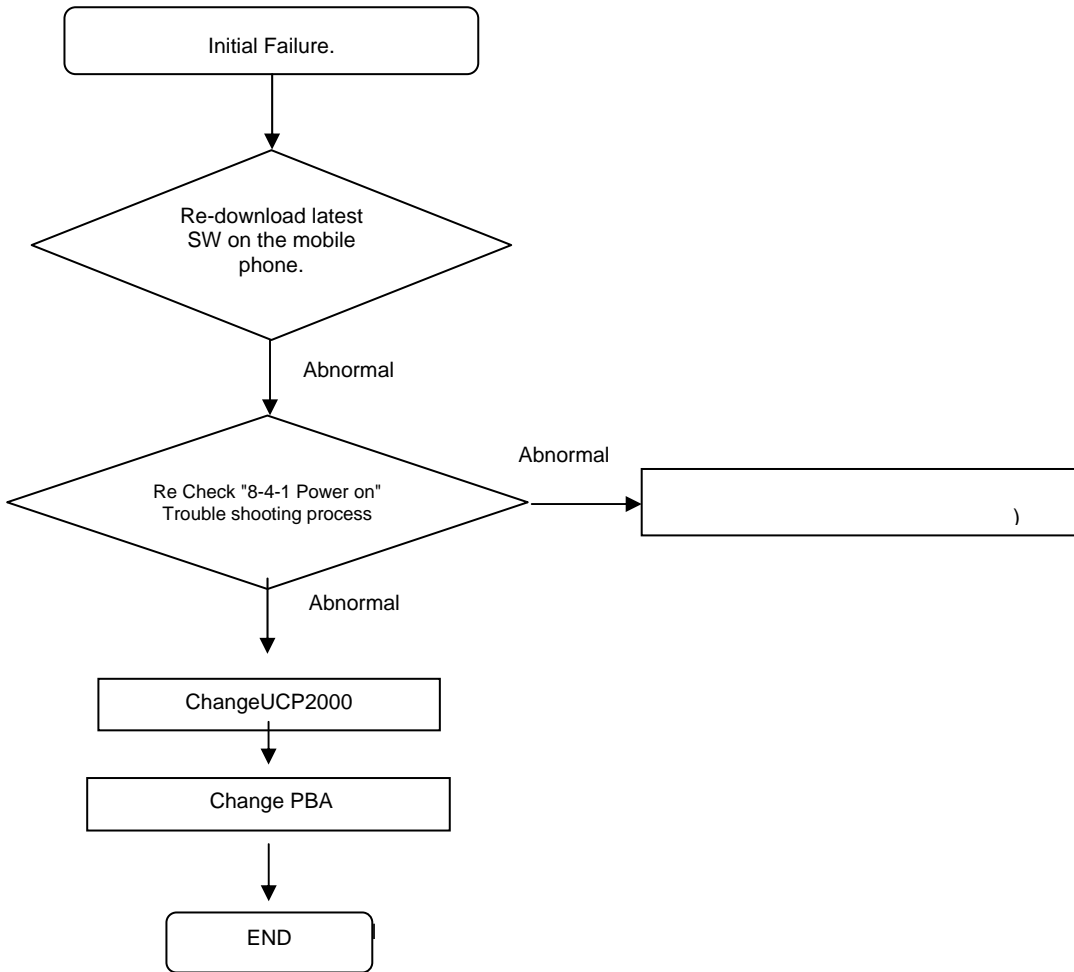
8. Level 3 Repair

8-4-1. Power On



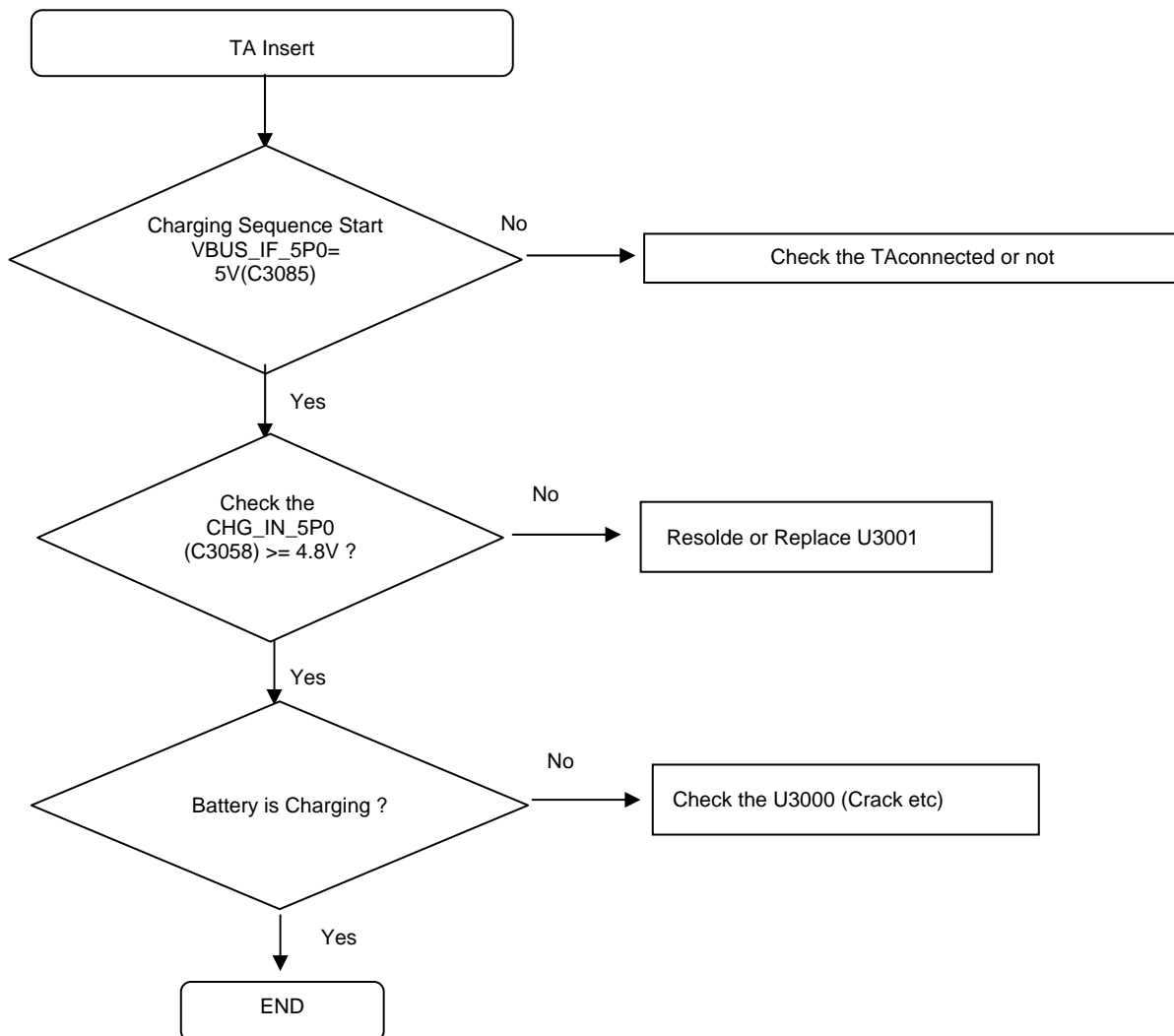
8. Level 3 Repair

8-4-2. Initial



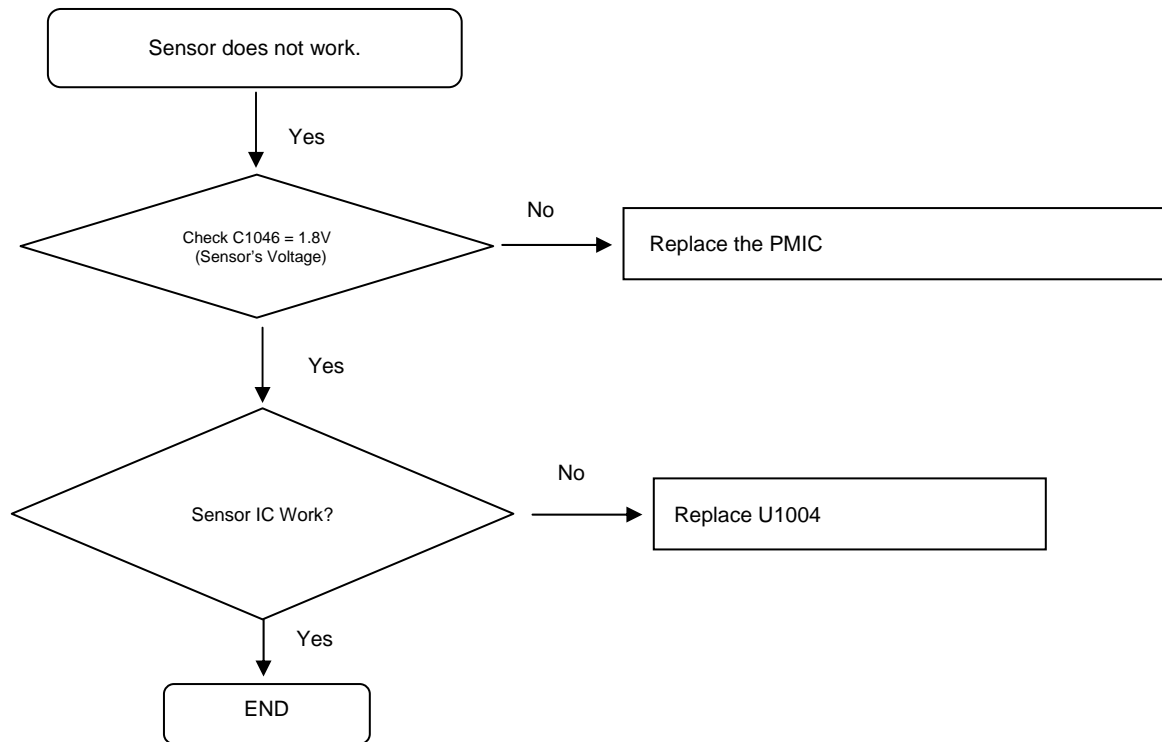
8. Level 3 Repair

8-4-3. Charging Part



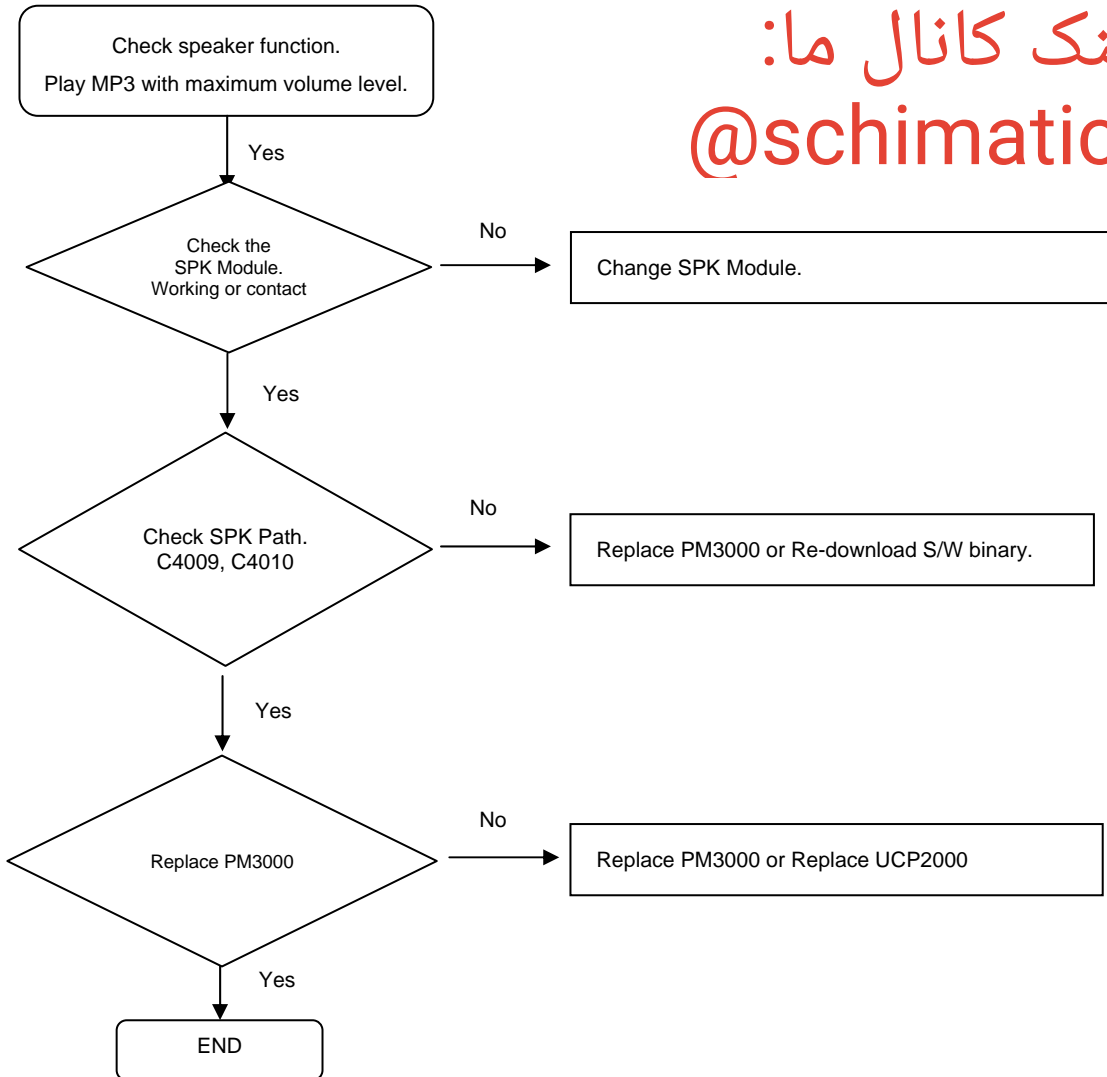
8. Level 3 Repair

8-4-4. Accel Sensor



8. Level 3 Repair

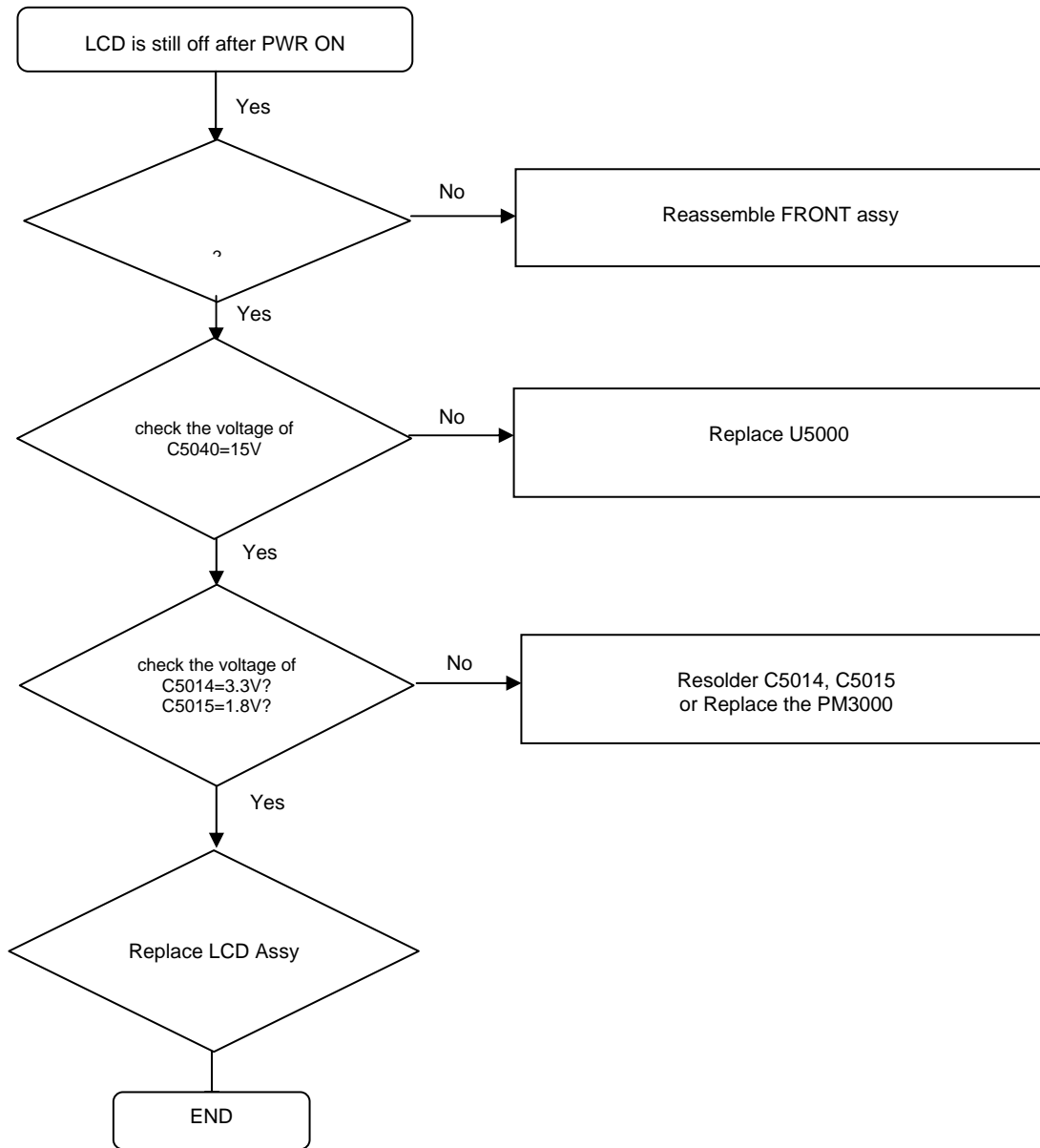
8-4-5. Speaker Part



لينك كانال ما:
@schimatics

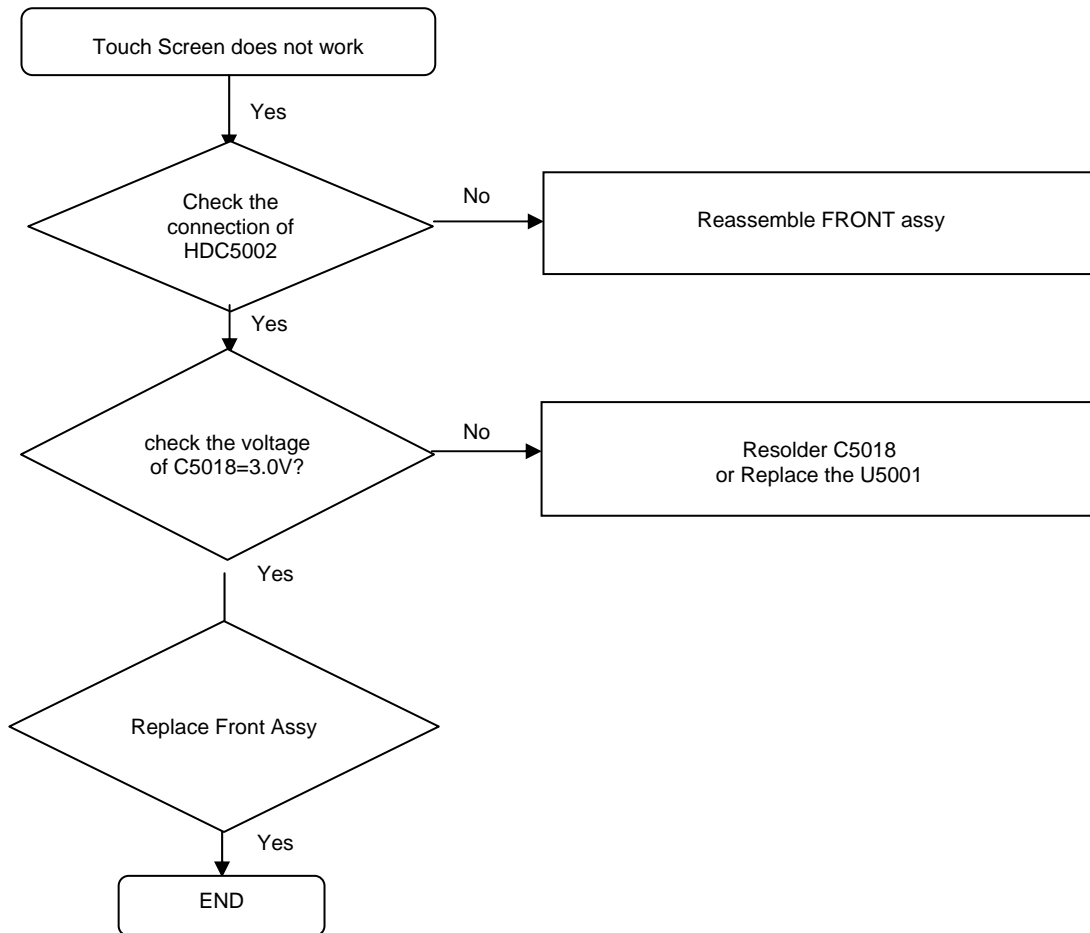
8. Level 3 Repair

8-4-6. LCD



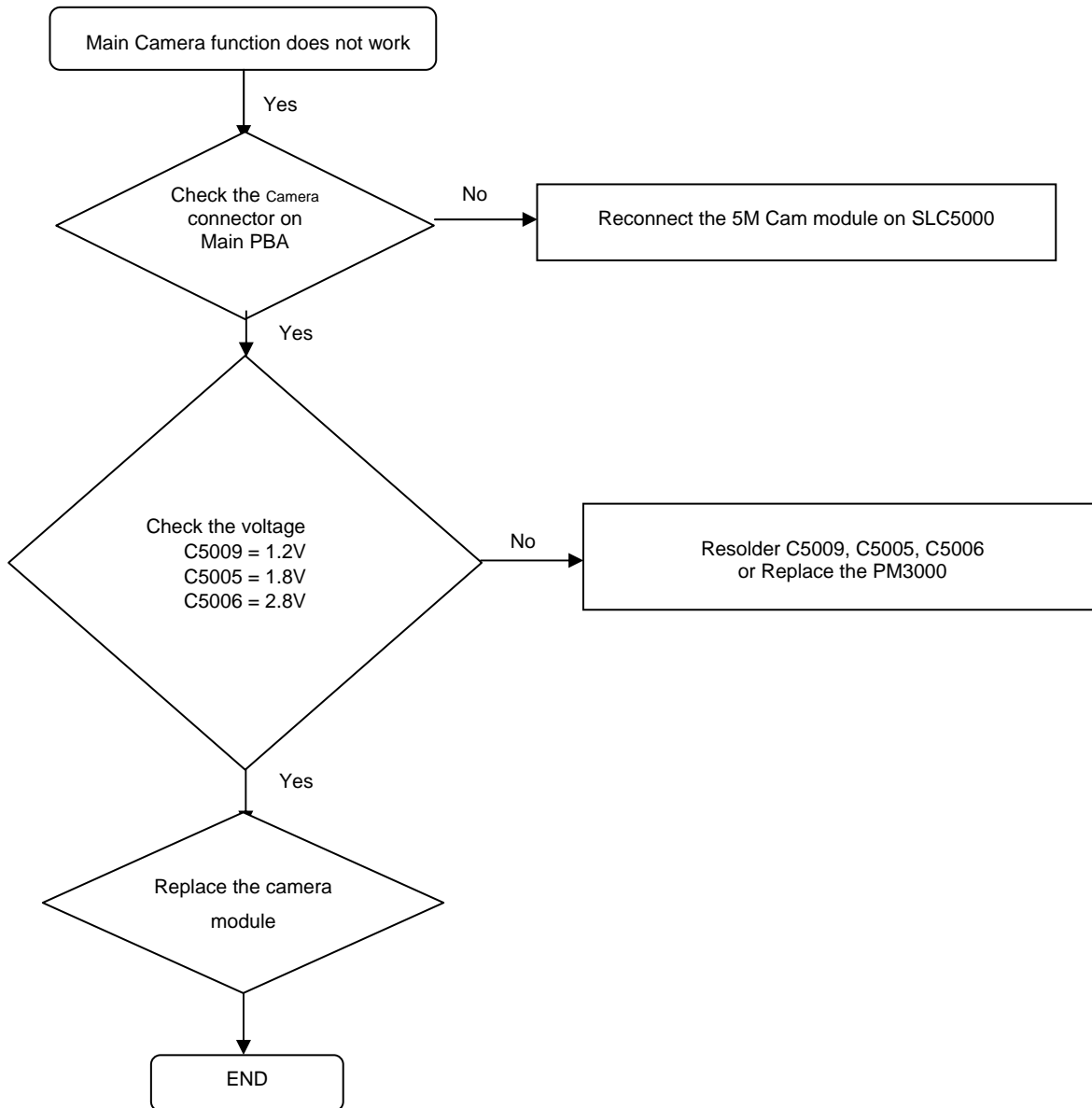
8. Level 3 Repair

8-4-7. TSP



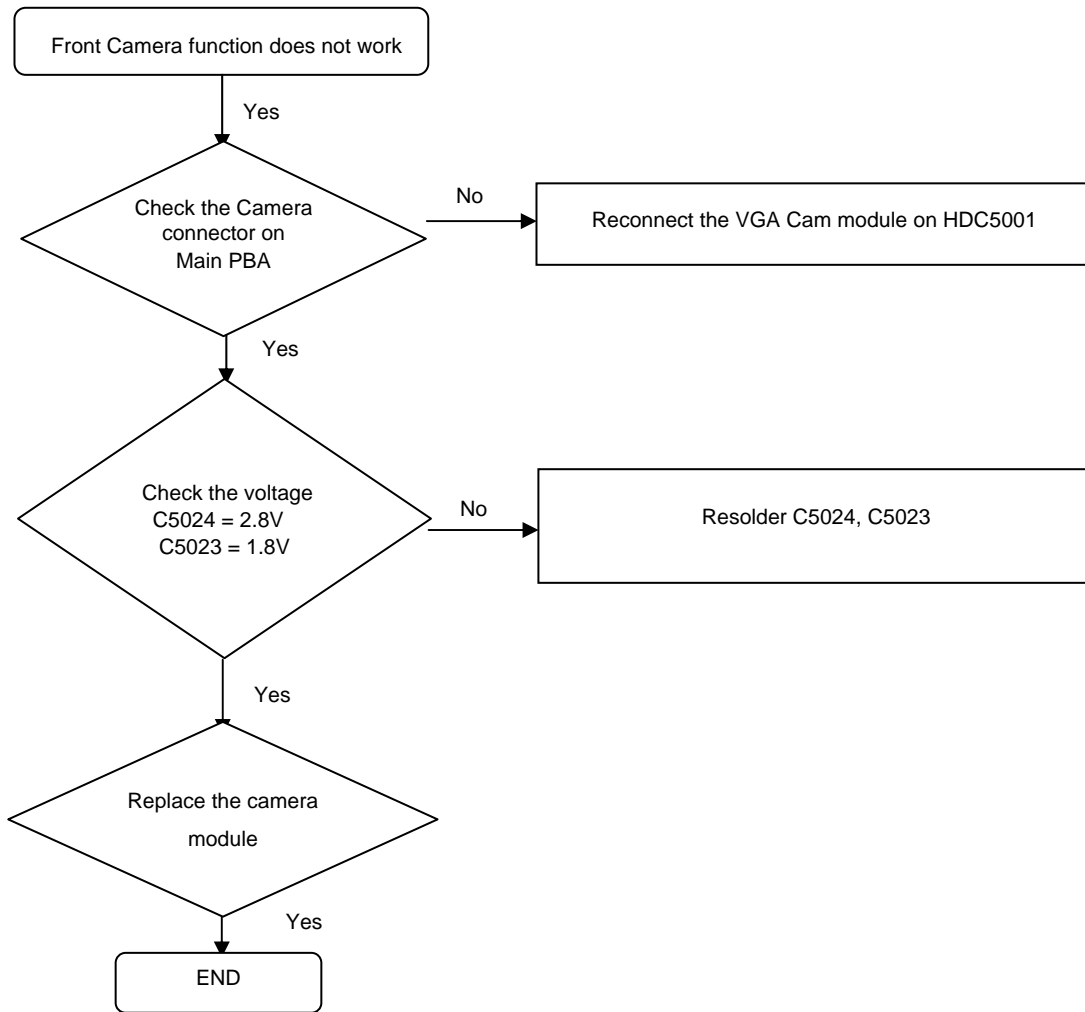
8. Level 3 Repair

8-4-8. 5M CAMERA



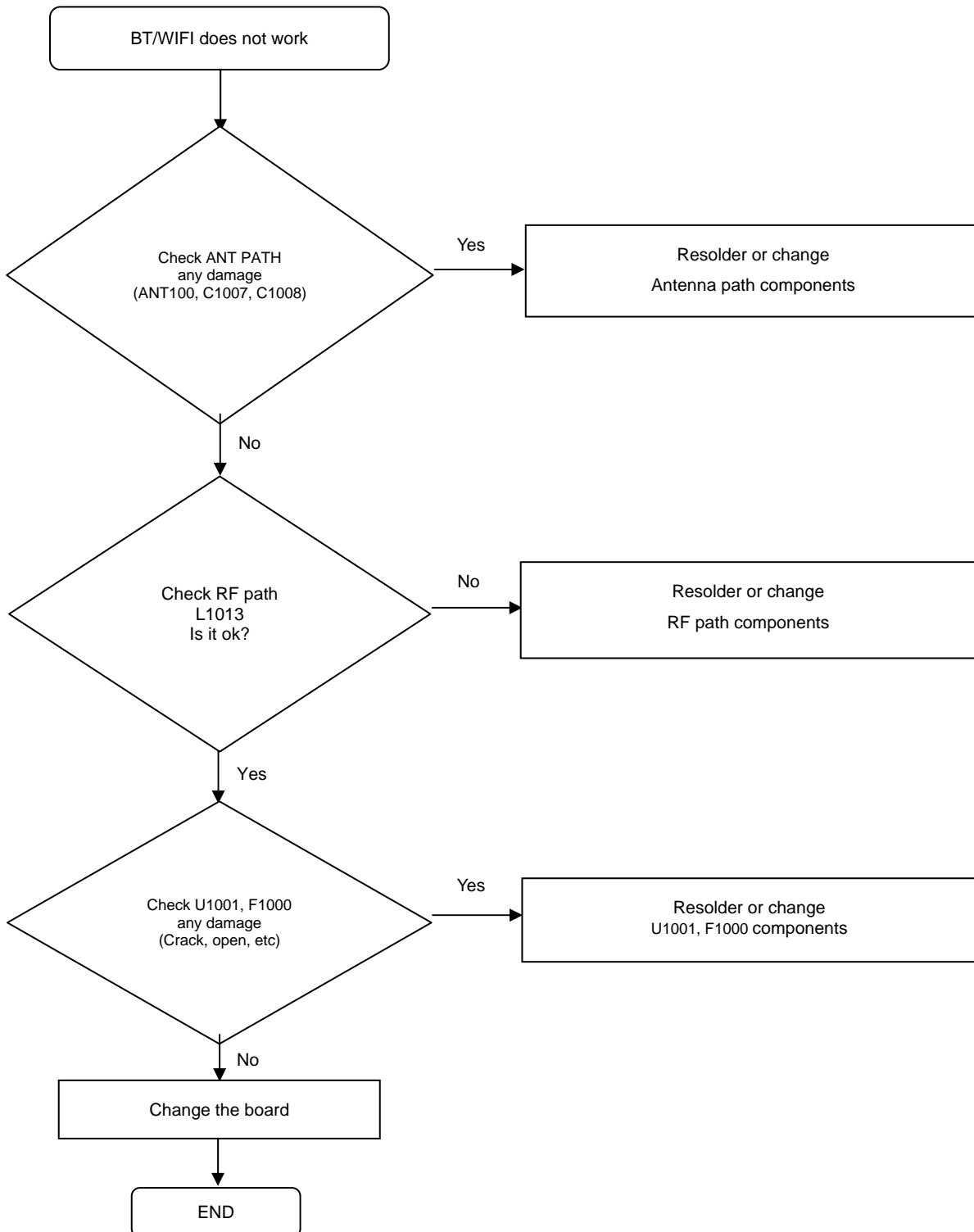
8. Level 3 Repair

8-4-9. 2M CAMERA



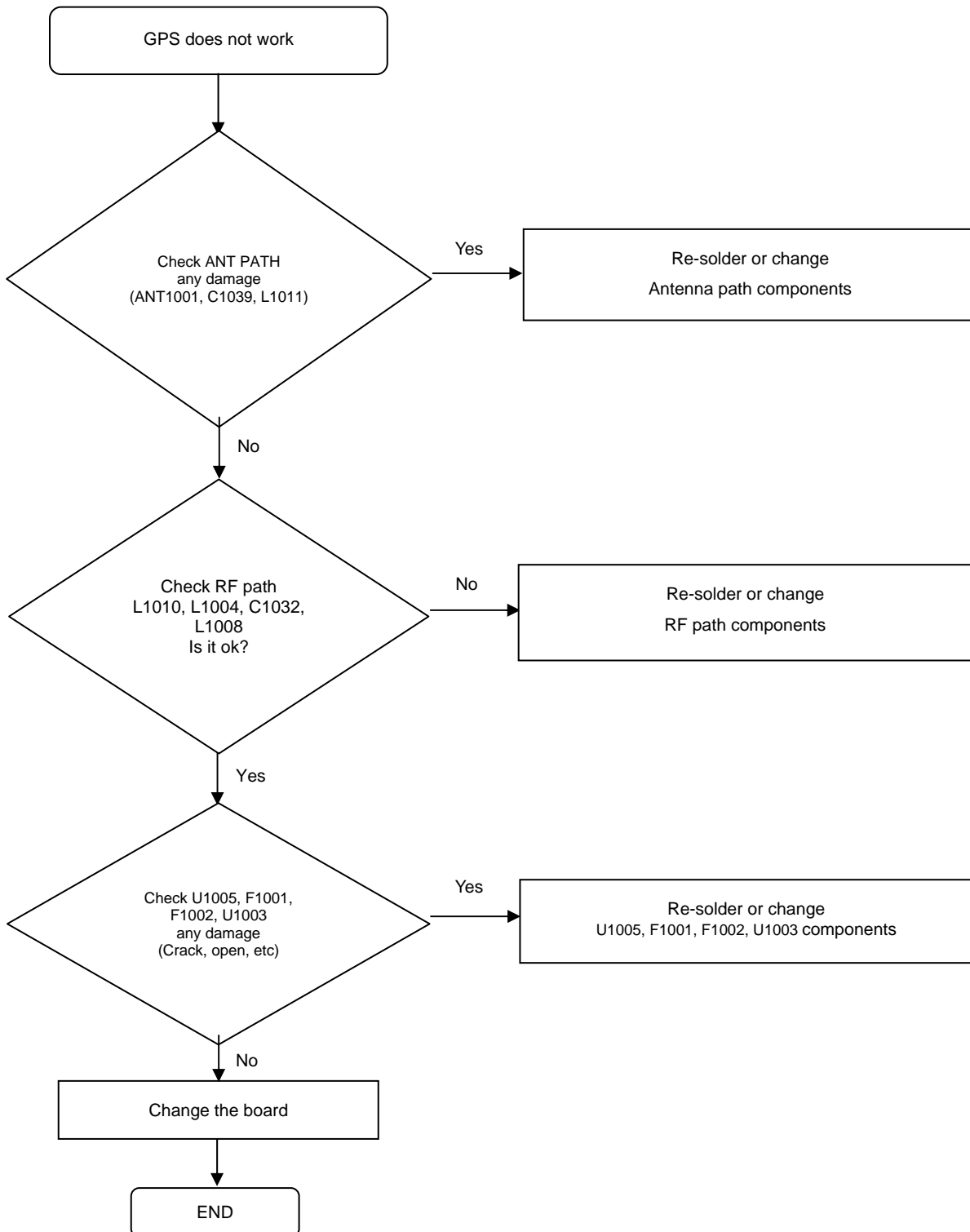
8. Level 3 Repair

8-4-10. BT/WLAN



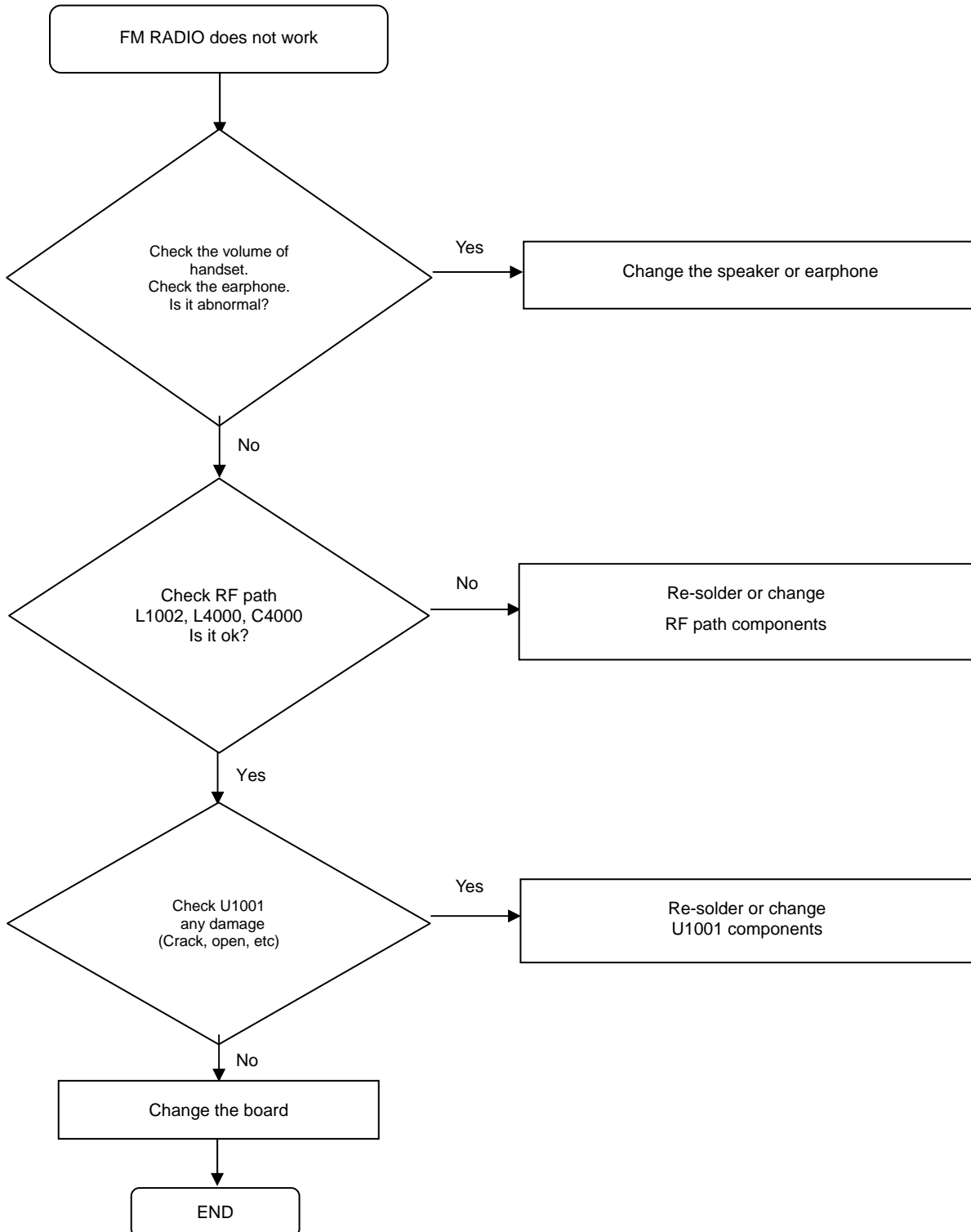
8. Level 3 Repair

8-4-11. GPS



8. Level 3 Repair

8-4-12. FM RADIO



8. Level 3 Repair

8-5. Service Schematics - NC Point(Top View) UCP2000 (AP)

	1	2	3	4	5	6	7	8	9	10	11	12	13	14	15	16	17	18	19	20	21	22	23	24	25	26	27								
A	EMVS	NC	NFP	NFD	NFD	NFD	NFD	TEST		MCSI	MCSI	MCSI	MCSI	MCSI	MCSI	MCSI	MCSI	MCSI	KEY0	KEY1	IISO	IISI	IISI	NC	VSSC										
B	NC	EMMC	NFCL	NFRE	NFWE	NFD	NFD	TEST	CAM	MCSI	CAM	SDA0	MCSI	MCSI	MCSI	MCSI	MCSI	MCSI	KEY0	KEY1	SDA2	IISO	IISI	IISO	MTCK	NC									
C		EMMC	NFRB	NFCE	NFD	NFD		NFD	MCSI	CAM	CAM				MCSI	MCSI			KEY0	KEY1			IISI	IISI	MTDI										
D	EMMC	EMMC	EMMC	NFCE	NFD	NFD	NFD	MCSI	MCSI	CAM					MCSI	MCSI			CLK_	SCL2	IISO	IISI	MTDO	TRAC	TRAC										
E	EMMC	EMMC	EMMC	EMMC	EMMC	NFD	NFD	NFD	MCSI	TEST	TEST			AVSS	AVSS					IISO	MTRS	MTMS	TRAC	TRAC	TRAC	TRAC									
F		EMVS	EMMC	EMMC	NFAL	VSSC	NFD	NFD	TEST		SCLO					VSSC	VSSC				VSSC	VSSC		TRAC	TRAC										
G	EMD	EMDQ		EMD	EMD																		USRT	TRAC	TRAC	UOTX	UORX								
H	EMD	EMDQ			EMVS																	GPIO	USTX	UITX	UIRX	UORT	UOCT								
J		EMDQ	EMD	EMD	EMD		VNF	VDDA	VDDA	VDDA	VDDA	VDDA	VDDA	VFB_	VSSC	VSSC	VIO_	VSSC	VSSC				GPIO	USCT	USRX	U2RX									
K	EMDQ	EMD	EMD	EMD	EMD		EMVD	VDDA	VDDA	VDDA	VDDA	VDDA	VDDA	VFB_	VSSC	VSSC	VSSC	VSSC	VSSC			AVDD	GPIO		U2TX	VIN_									
L	EMD	EMDQ			EMVS		EMVD	VDDA	VDDA	VDDA	VDDA	VDDA	VDDA	VSSC	VSSC	VSSC	VSSC	VSSC	VSSC				AGN	VQP_		VQN	VIP_								
M		EMDQ		EMD	EMD		EMVD	VDDC	VDDC	VDDA	VDDA	VSSC	VSSC	VSSC	VSSC	VSSC	VSSC	VSSC	VDDC	VDDC			AVSS	VQN	VIP_	VQP_									
N	EMCS		EMD	EMD			EMVD	VDDC	VDDC	VSSC	VSSC	VSSC	VSSC	VSSC	VSSC	VSSC	VSSC	VDDC	VDDC	VDDC		AVDD	NC		VIN_	AFCO	LDO_								
P	EMCS	EMA	EMA	EMA	EMVR		EMVD	VDDC	VDDC	VSSC	VSSC	VSSC	VSSC	VSSC	VSSC	VSSC	VSSC	VSSC	VDDC	VDDC	VDDC			NC		APCO	APCO								
R		EMA			CLID		EMVD	VDDC	VDDC	VSSC	VSSC	VSSC	VSSC	VSSC	VSSC	VSSC	VSSC	VSSC	VDDC	VDDC	VDDC					NC	VQP_								
T	EMA	EMA	EMA	CLID			EMVD	VDDC	VDDC	VSSC	VSSC	VSSC	VSSC	VSSC	VSSC	VSSC	VSSC	VSSC	VDDC	VDDC	VDDC					NC	VQN	VIN_							
U	EMVS	EMCK			EMOD		EMVD	VDDC	VDDC	VSSC	VSSC	VSSC	VSSC	VSSC	VSSC	VSSC	VSSC	VSSC	VDDC	VDDC	VDDC					NC	VQN	VIN_							
V		EMZQ	EMA	EMA	EMA		EMVD	VDDC	VDDC	VDDC	VDDC	VDDC	VDDC	VSSC	VSSC	VSSC	VSSC	VSSC	VSSC	VDDC	VDDC		VIO_	CPO_			RFSC								
W		EMDQ	EMD		EMVS		VLCD	VDDC	VFB_	VFB_	VDDC	VDDC	VDDC	VSSC	VSSC	VSSC	VSSC	VSSC	VSSC	VDDC	VDDC			VIO_	CPO_		CPO_	CPO_							
Y	EMD	EMD	EMD	EMD	EMVS																				CPO_	XTL_	CPO_	CPO_	CPO_						
AA	EMDQ	EMDQ		EMD																				VIO_	CPO_	CPO_	CPO_								
AB			EMD	EMD			AVDD										DM	VSSC						CPO_			CPO_	CPO_							
AC	EMDQ	EMVS	EMD	EMD			AVSS			ANA_	CHIP	AUD_	CLK2	CLK2		DP	VIO_	SD0_	VSD1	SIMD	SIMC	SDA1	EXTI			SPIO	SPIO								
AD	EMD	EMD	EMD				MDSI	LCD_		XTL_	XTL_	AUD_					MEMS	MEMS		SD0_	SD1_	SIMC		SIMC	SCL1	EXTI	SPIO								
AE		EMDQ	EMD	EMD			MDSI	LCD_				CLK_	ADI_				MEMS	MEMS			SD1_	SD1_			SIMR	SIMD	SDA3	SPIO							
AF	NC	EMDQ	EMD	MDSI	MDSI	MDSI	MDSI	MDSI	MDSI	EXT_	AUD_	AUD_	ADI_	ADI_	CLK2	VRES	SD0_	SD0_	SD0_	SD1_	SD1_	SIMR	VSIM	SIMD	VSIM	SCL3	NC								
AG	EMVS	NC		MDSI	MDSI	MDSI		LCD_	LCD_			AUD_	AUD_		PTES	VDDU			SD0_	SD0_		VSD	SD1_		SIMR	VSIM	NC	VSSC							