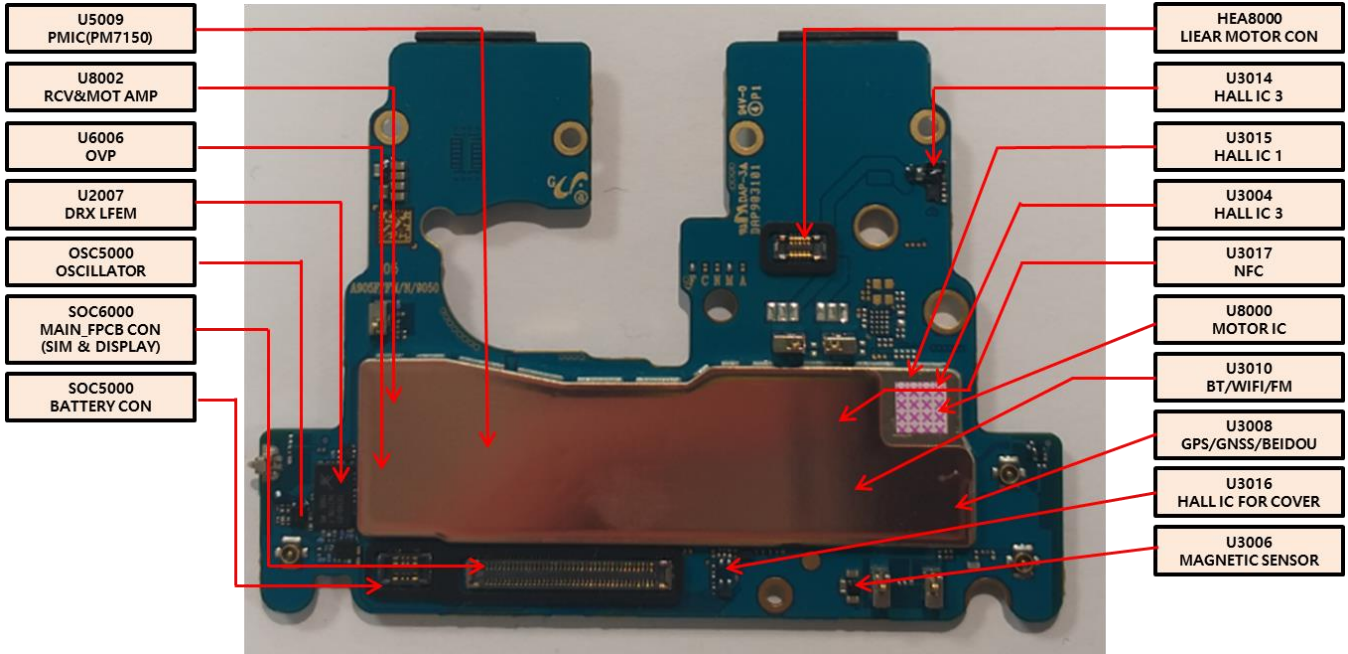


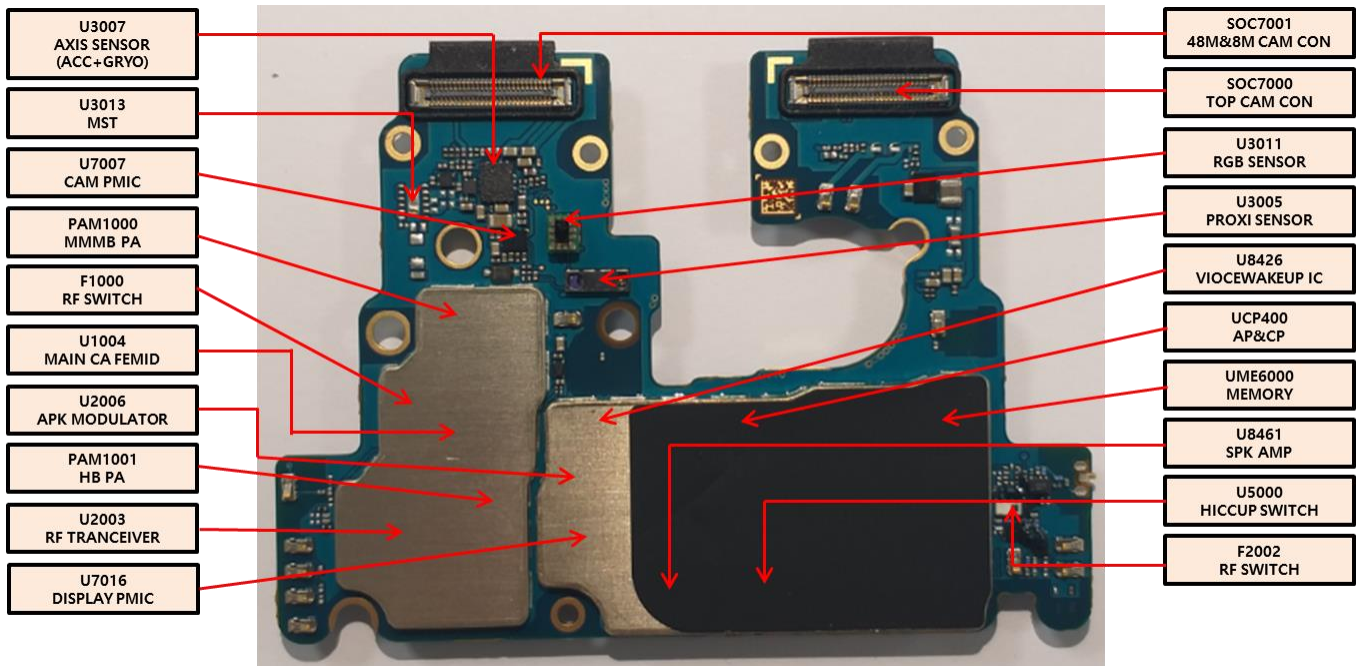
8. Level 3 Repair

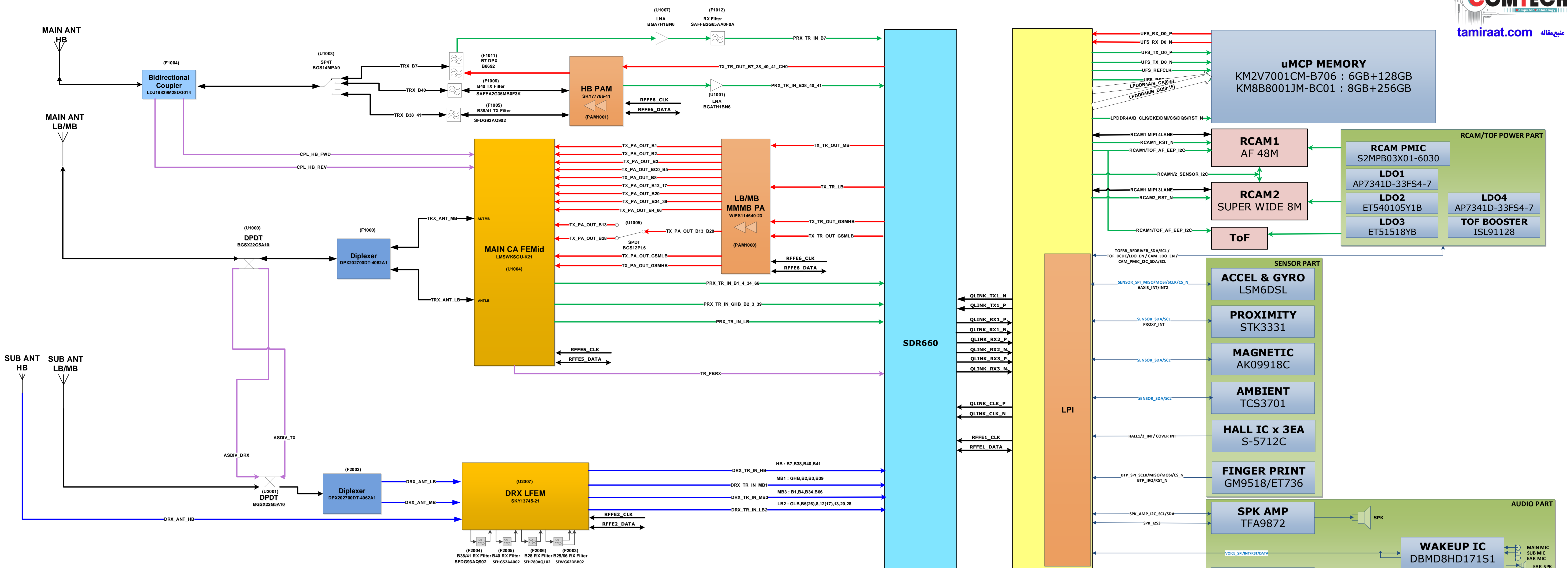
8-1. Components Layout

MAIN PBA (TOP SIDE)



MAIN PBA (BOTTOM SIDE)

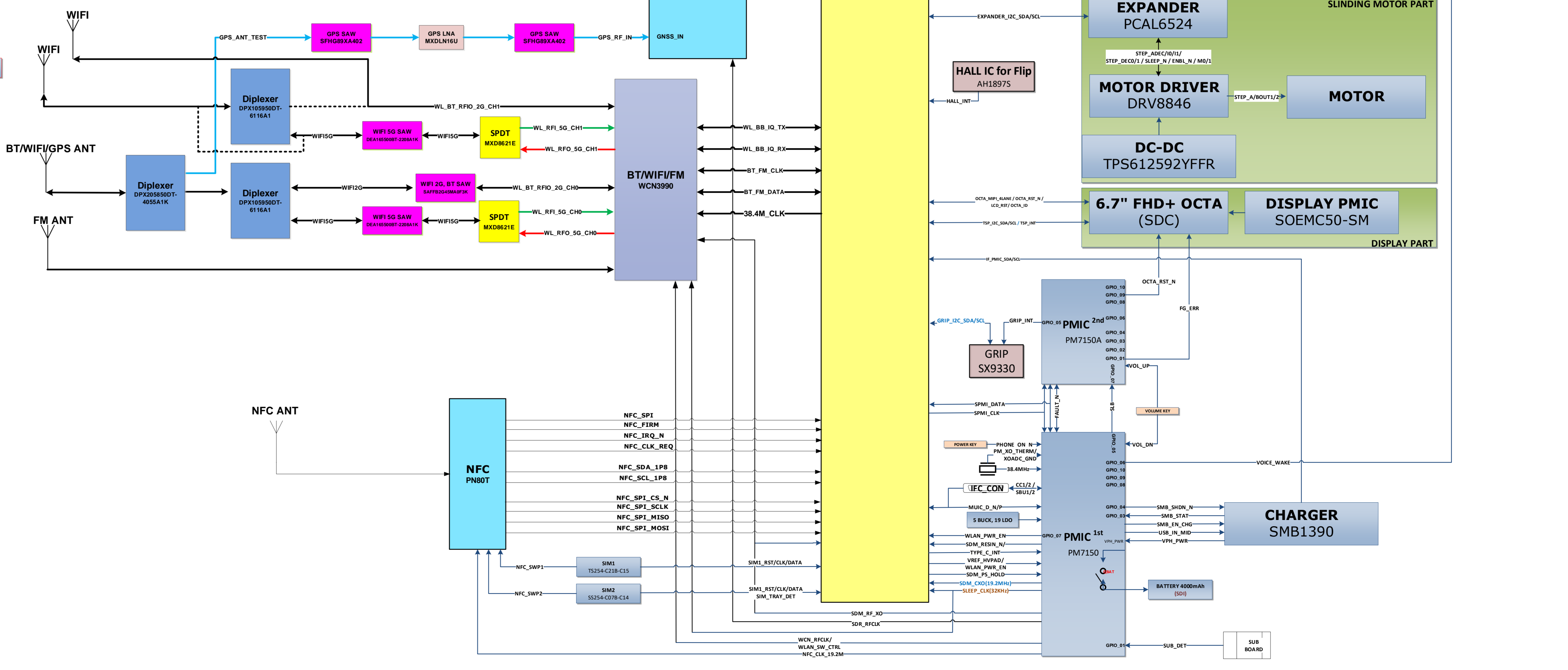




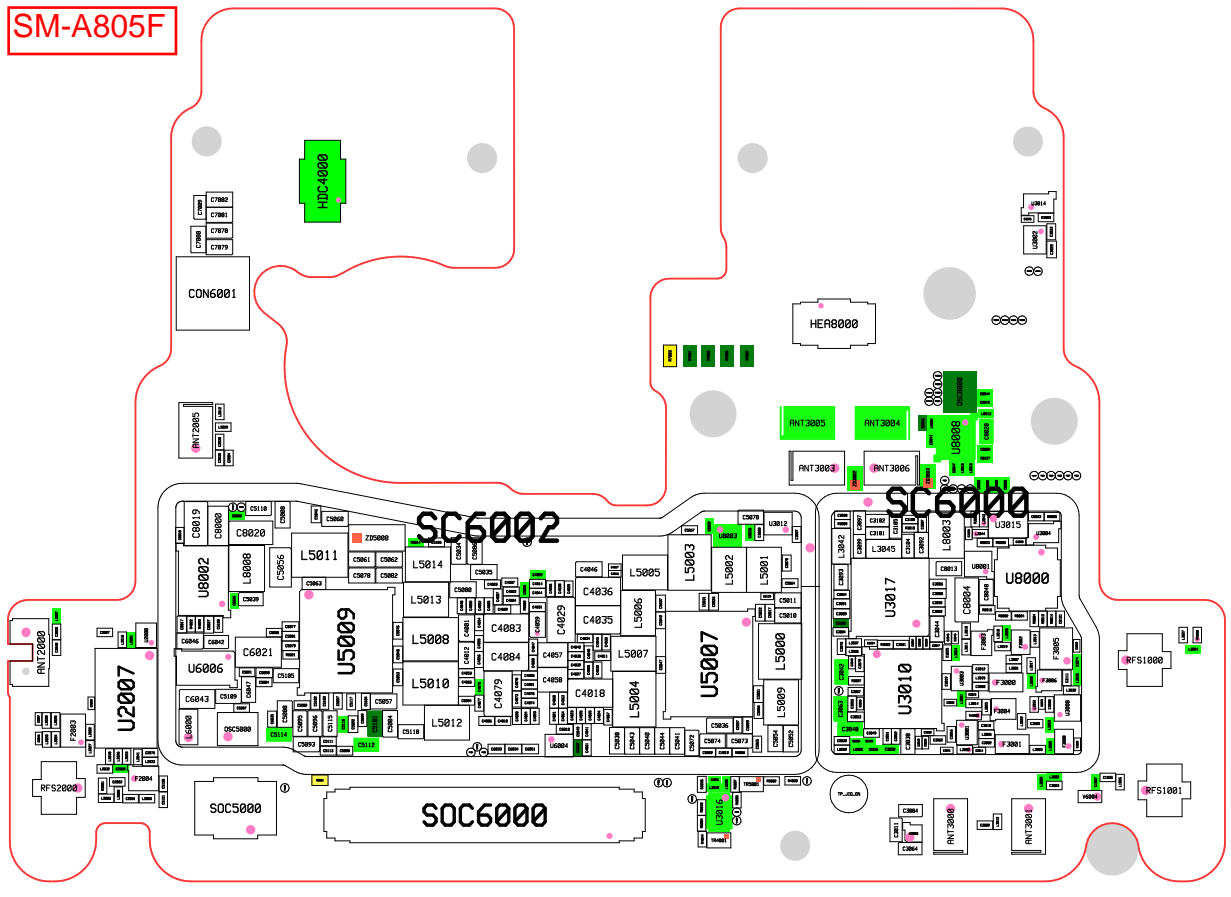
*** RF Band Information**

GSM: 850/900/1800/1900
 CDMA: BC0
 WCDMA: B1/B2/B4/B5/B8
 TDSCDMA: B34/B39
 LTE FDD: B1/B2/B3/B4/B5/B7/B8/B12/B13/B17/B20/B28/B66
 LTE TDD: B34/B38/B39/B40/B41

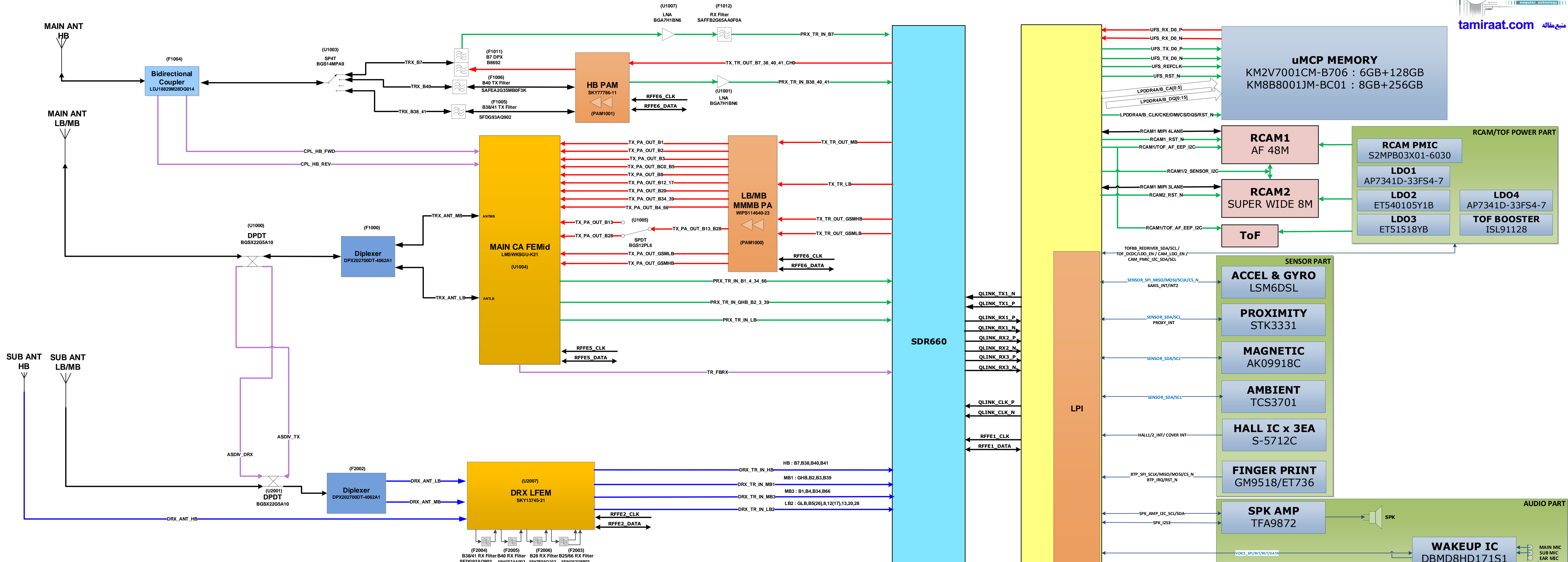
Confidential



SM-A805F



SM-A8050 REV0.2 Block Diagram 19.04.14



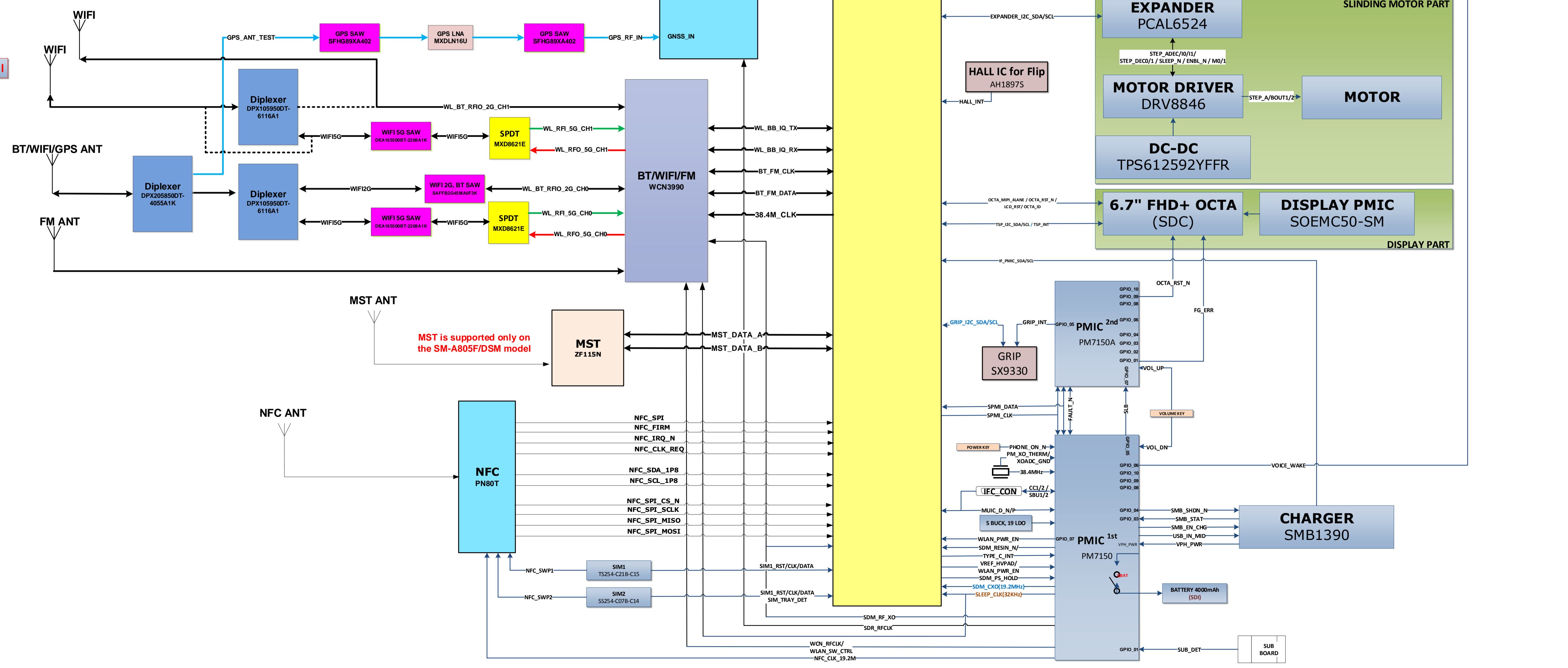
*** RF Band Information**

CDMA B0
GSM 850, 900, 1800, 1900
WCDMA B1, B2, B5, B8
LTE FDD B1, B3, B4, B5, B7, B8, B12, B17, B20
TD-SCDMA B34, B39
LTE TDD B34, B38, B39, B40, B41

Confidential

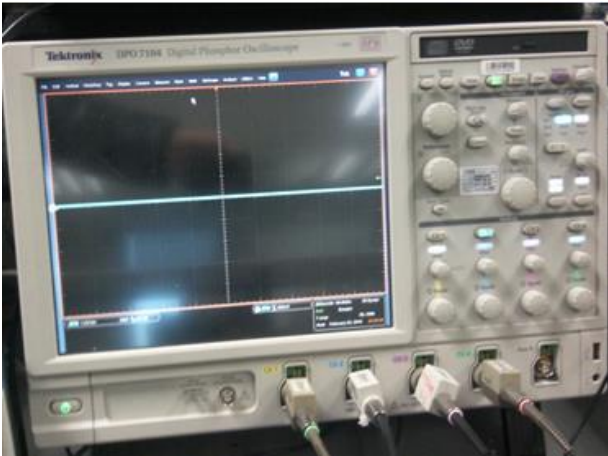


Band	FCC RF BAND Frequency		
	DL frequency (MHz)	UL frequency (MHz)	
4	2110	2132.5	2155
5	869	881.5	894
12	729	737.5	746
17	734	740	746
41	2496	2593	2690

Connectivity Frequency Range (MHz)	
WLAN	2412 - 2462 MHz
	5180 - 5240 MHz
	5260 - 5320 MHz
	5500 - 5720 MHz
	5745 - 5825 MHz
Bluetooth / BLE / ANT+	2402 - 2480 MHz
GNSS	1559 - 1610 MHz
FM Radio	87.5 - 108 MHz
NFC	13.56 MHz
MST	0.555 - 8.330 KHz



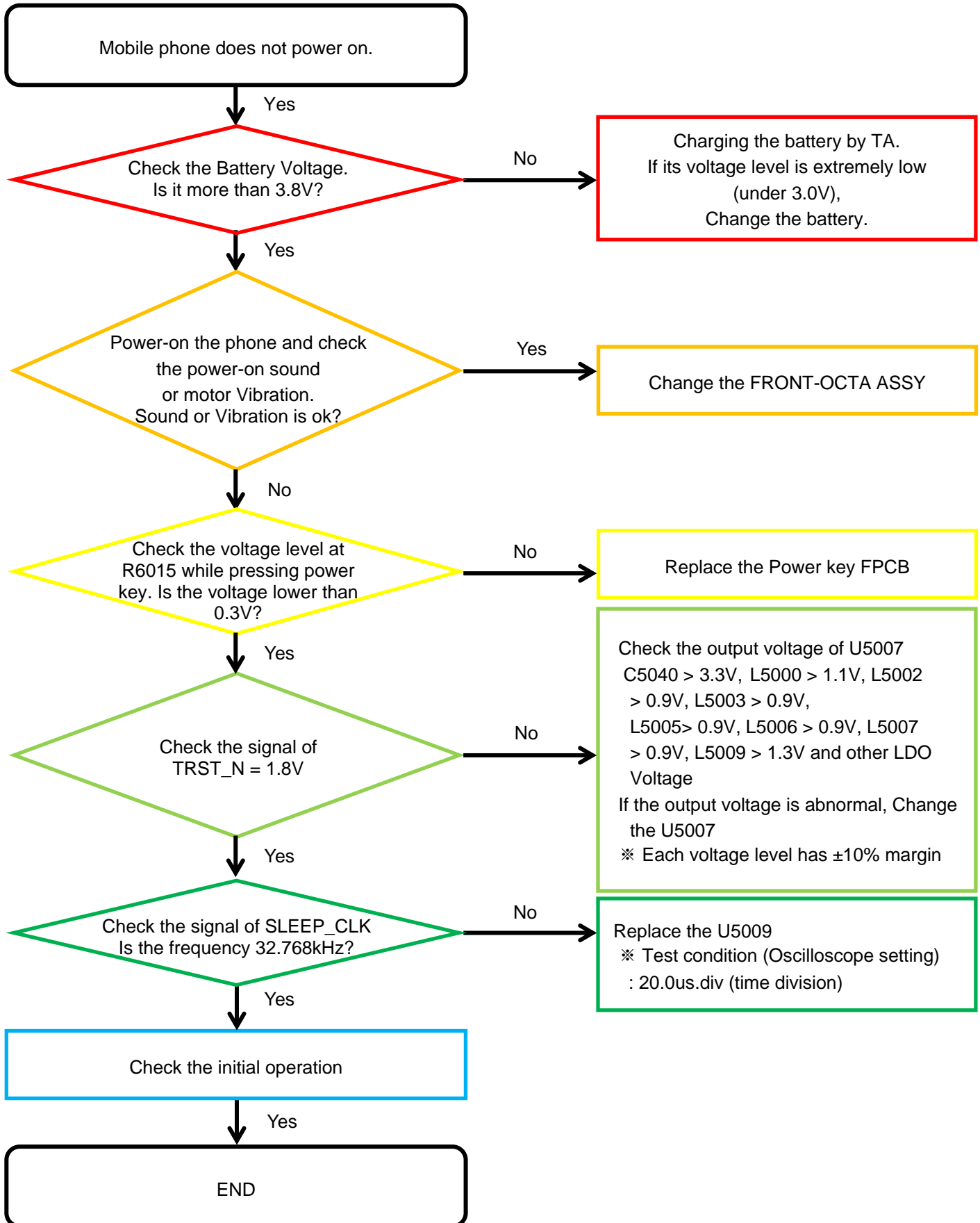
8. Level 3 Repair

8-3. Flow chart of Troubleshooting.

	
<p style="text-align: center;">Oscilloscope</p>	<p style="text-align: center;">Digital Multimeter</p>
	
<p style="text-align: center;">Power Supply</p>	<p style="text-align: center;">+ ,Y driver, ESD Safe Tweezer</p>
	
<p style="text-align: center;">8960 & Spectrum Analyzer</p>	<p style="text-align: center;">Soldering iron</p>

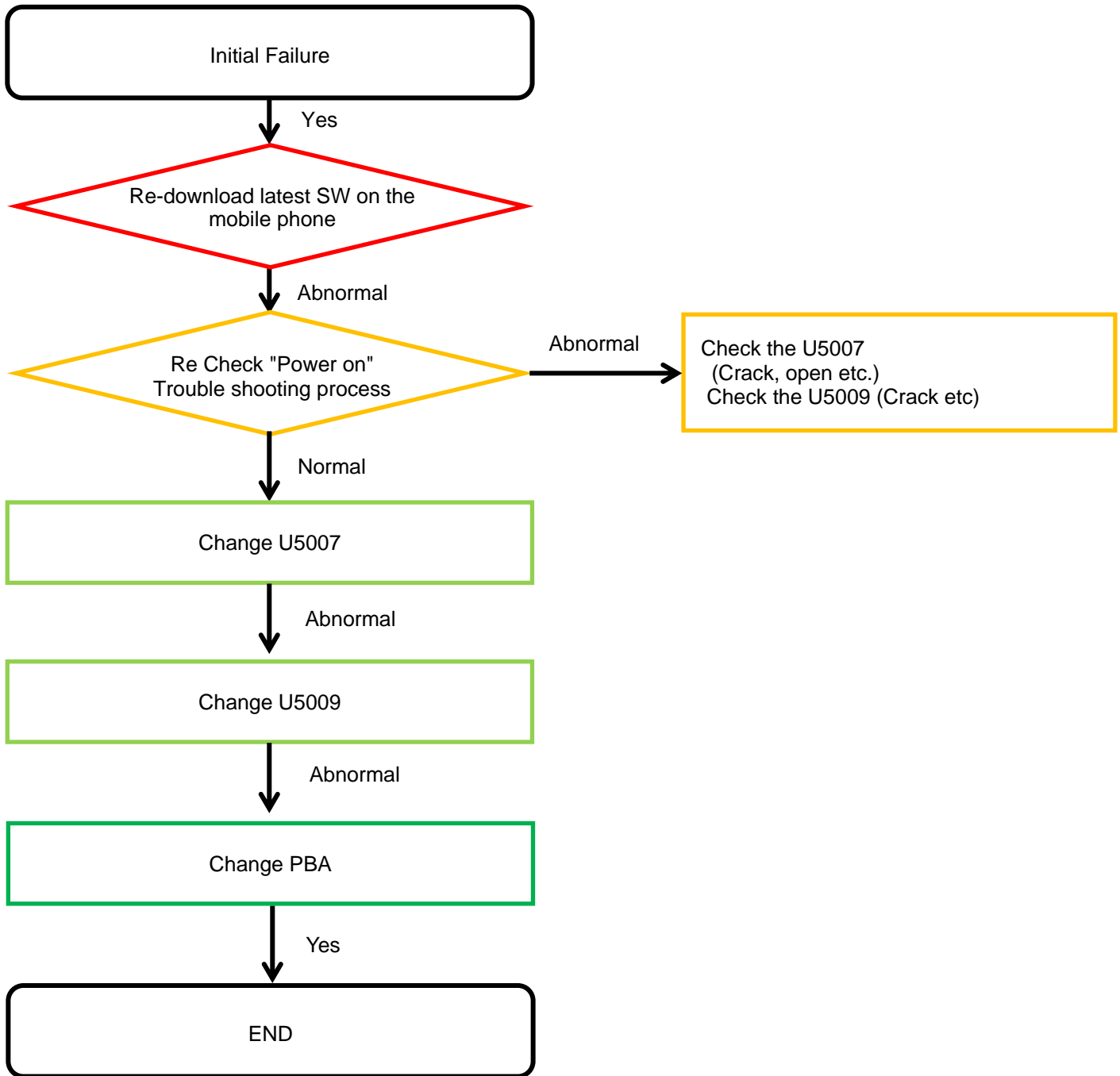
8. Level 3 Repair

8-4-1. Power On



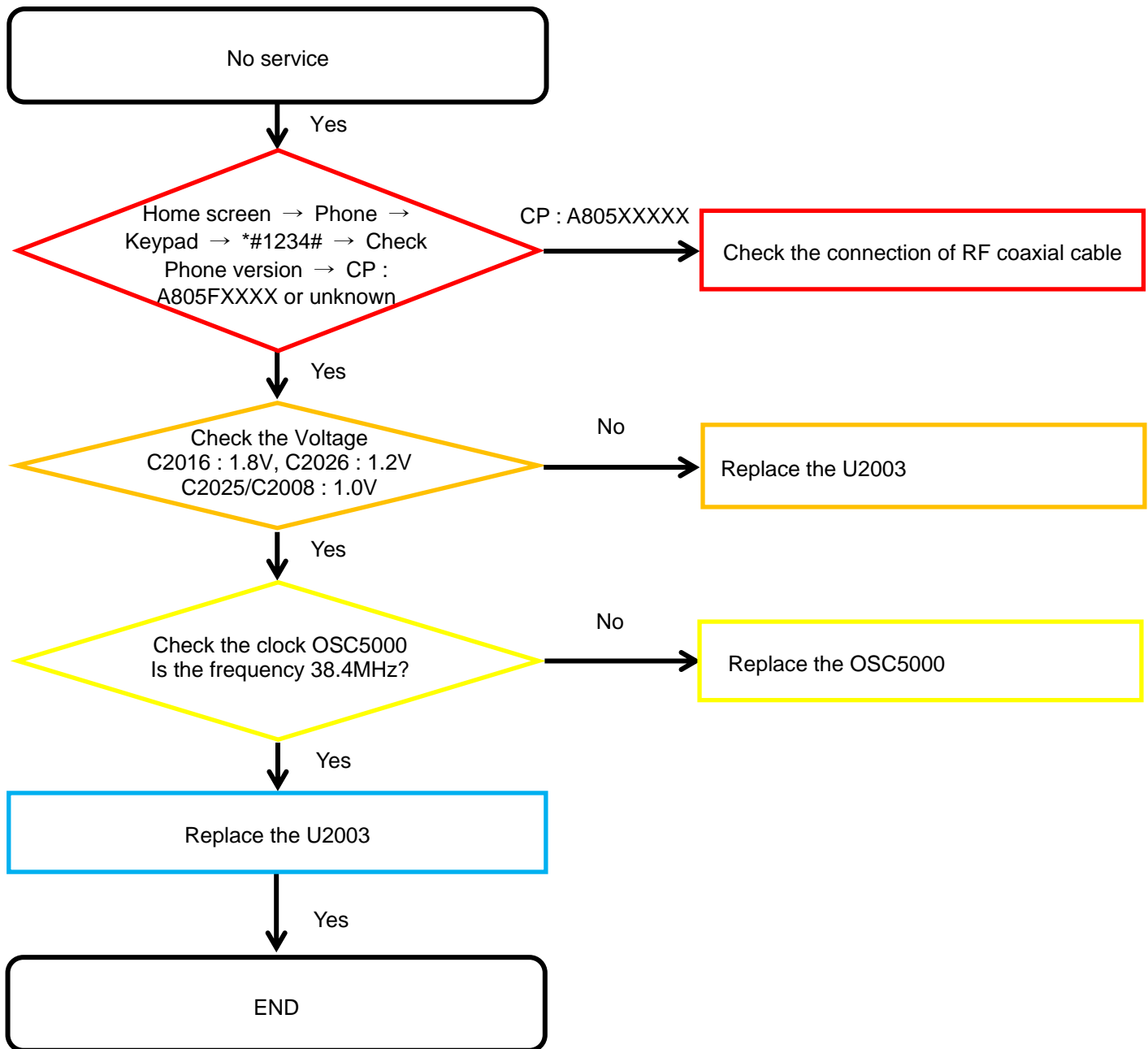
8. Level 3 Repair

8-4-2. Initial



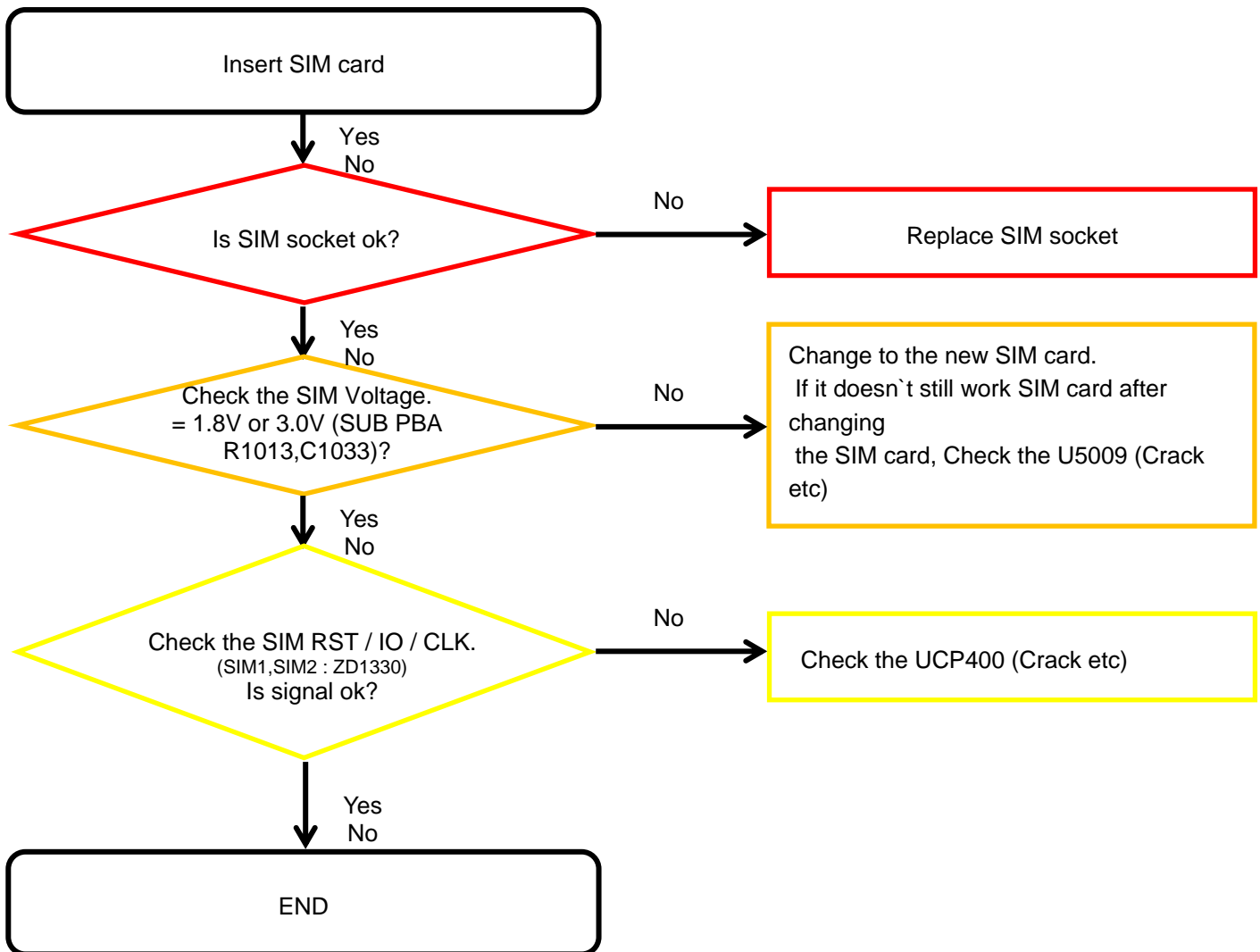
8. Level 3 Repair

8-4-3. No Service



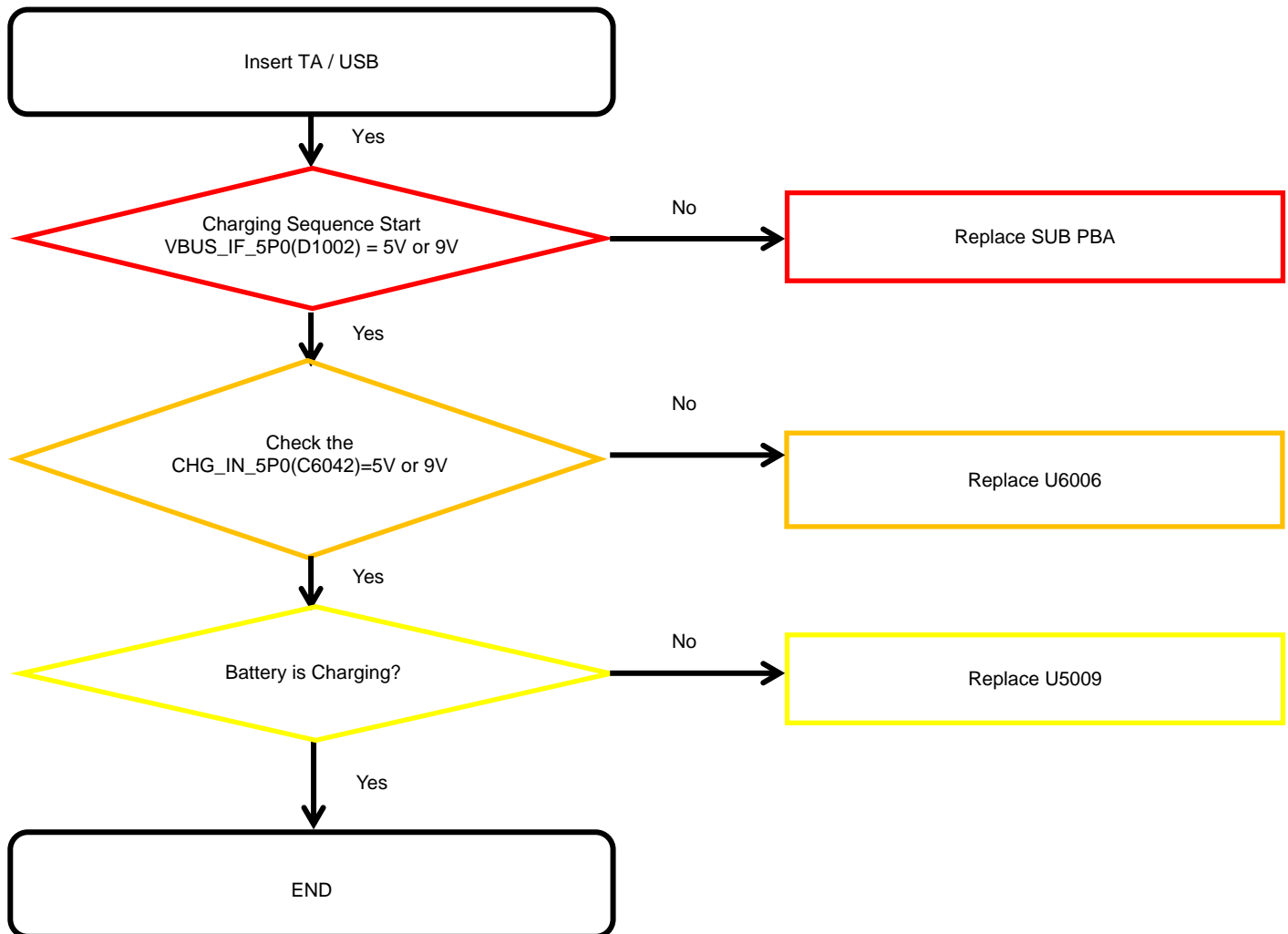
8. Level 3 Repair

8-4-4. SIM Part



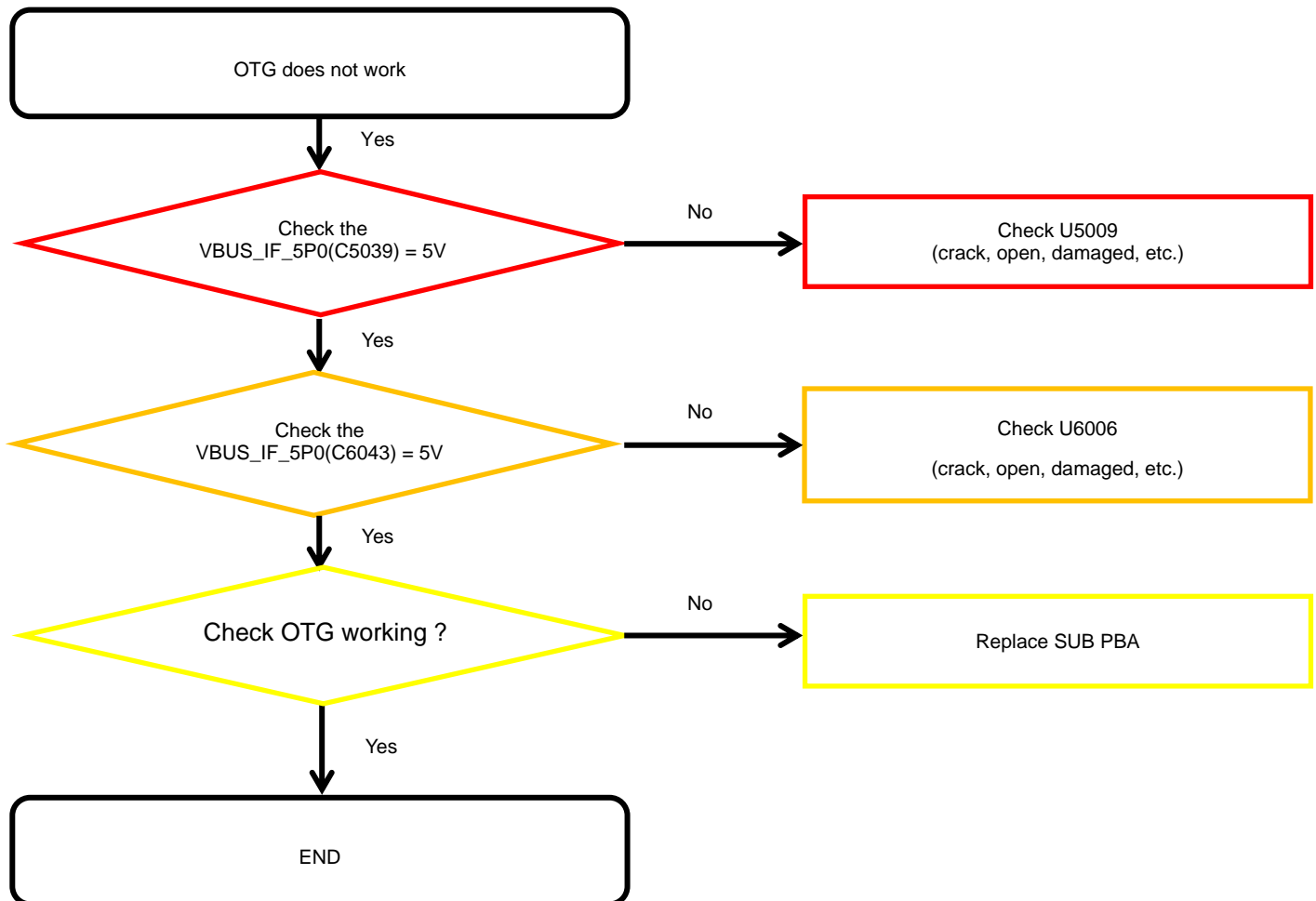
8. Level 3 Repair

8-4-5. Cable Charging Part



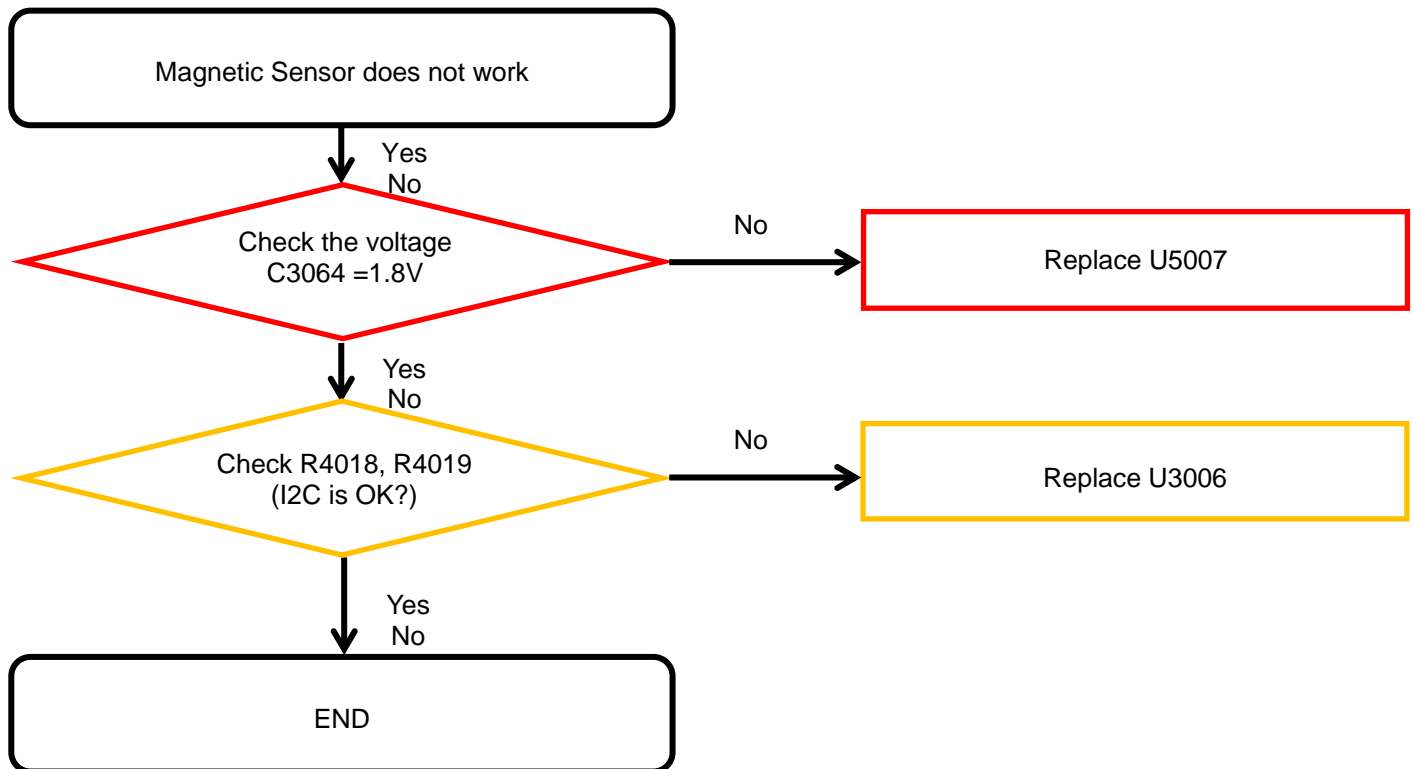
8. Level 3 Repair

8-4-6. OTG



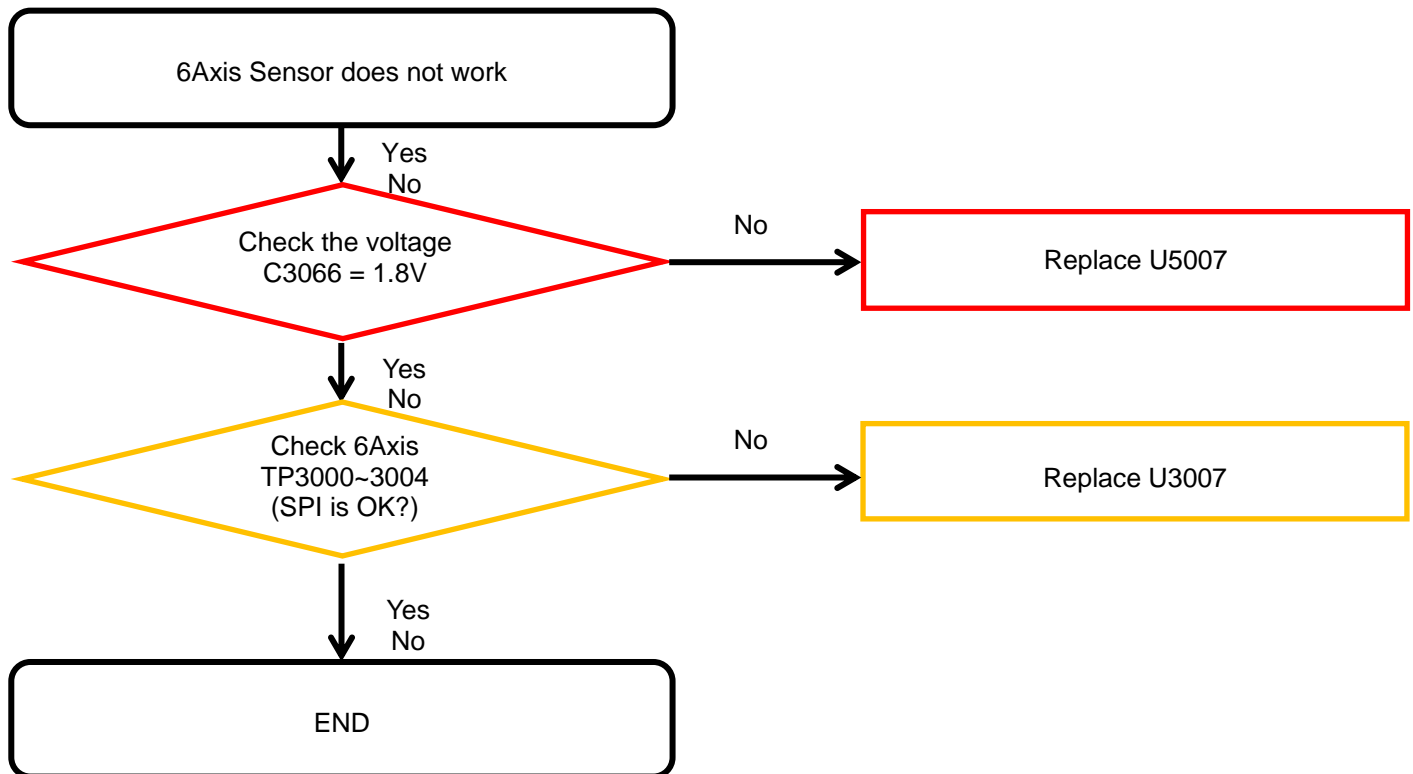
8. Level 3 Repair

8-4-7-1. Magnetic Sensor



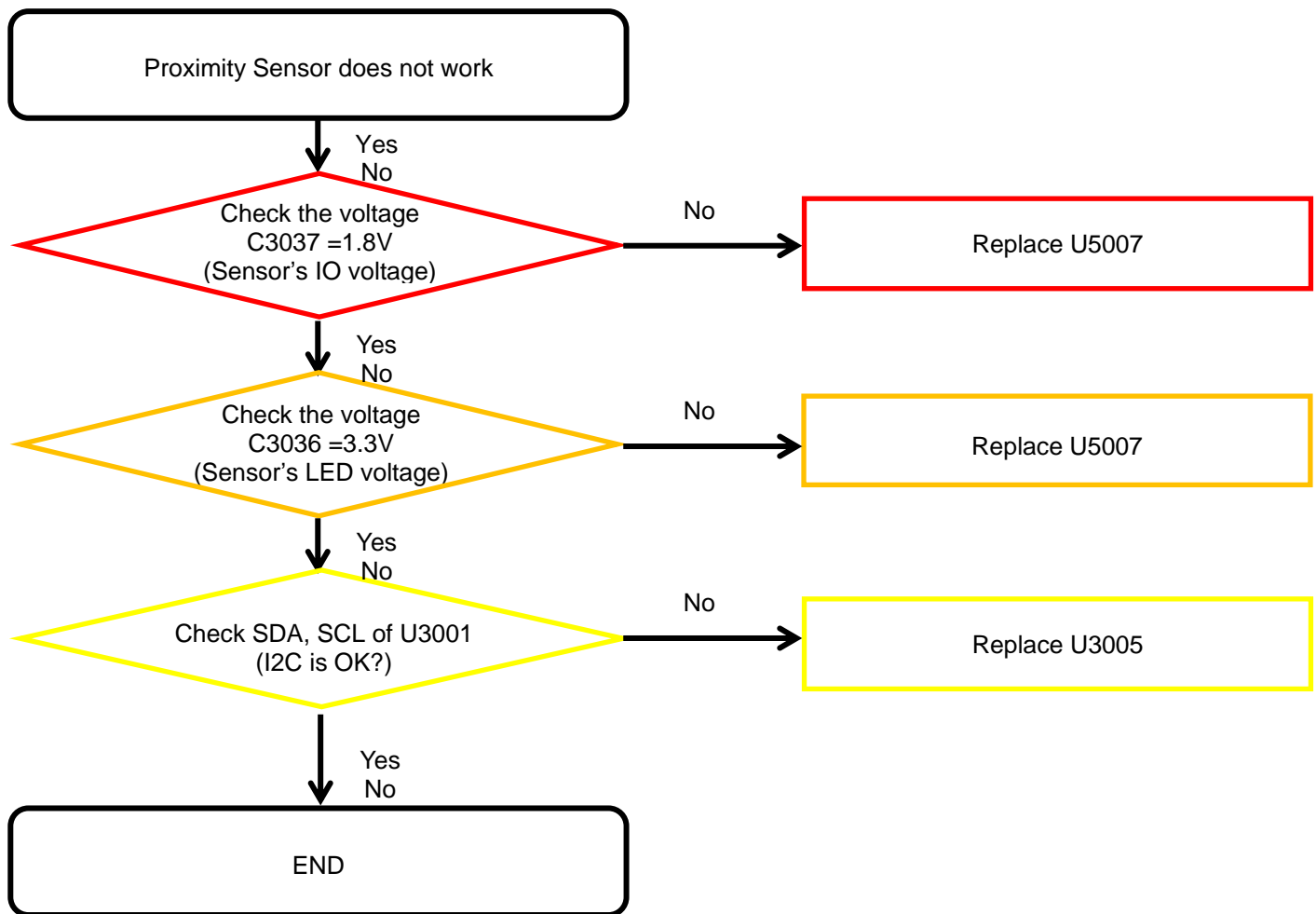
8. Level 3 Repair

8-4-7-2. 6Axis Sensor



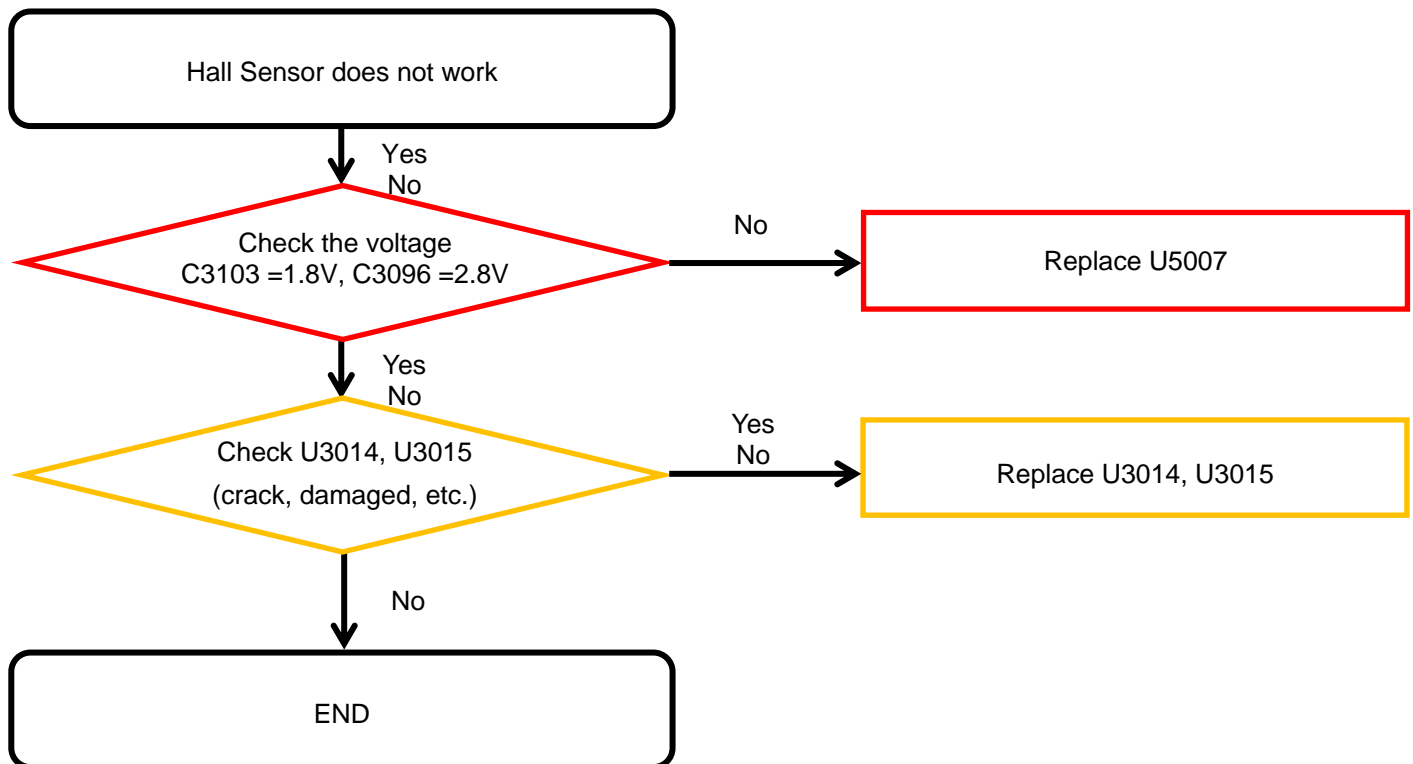
8. Level 3 Repair

8-4-7-3. Proximity



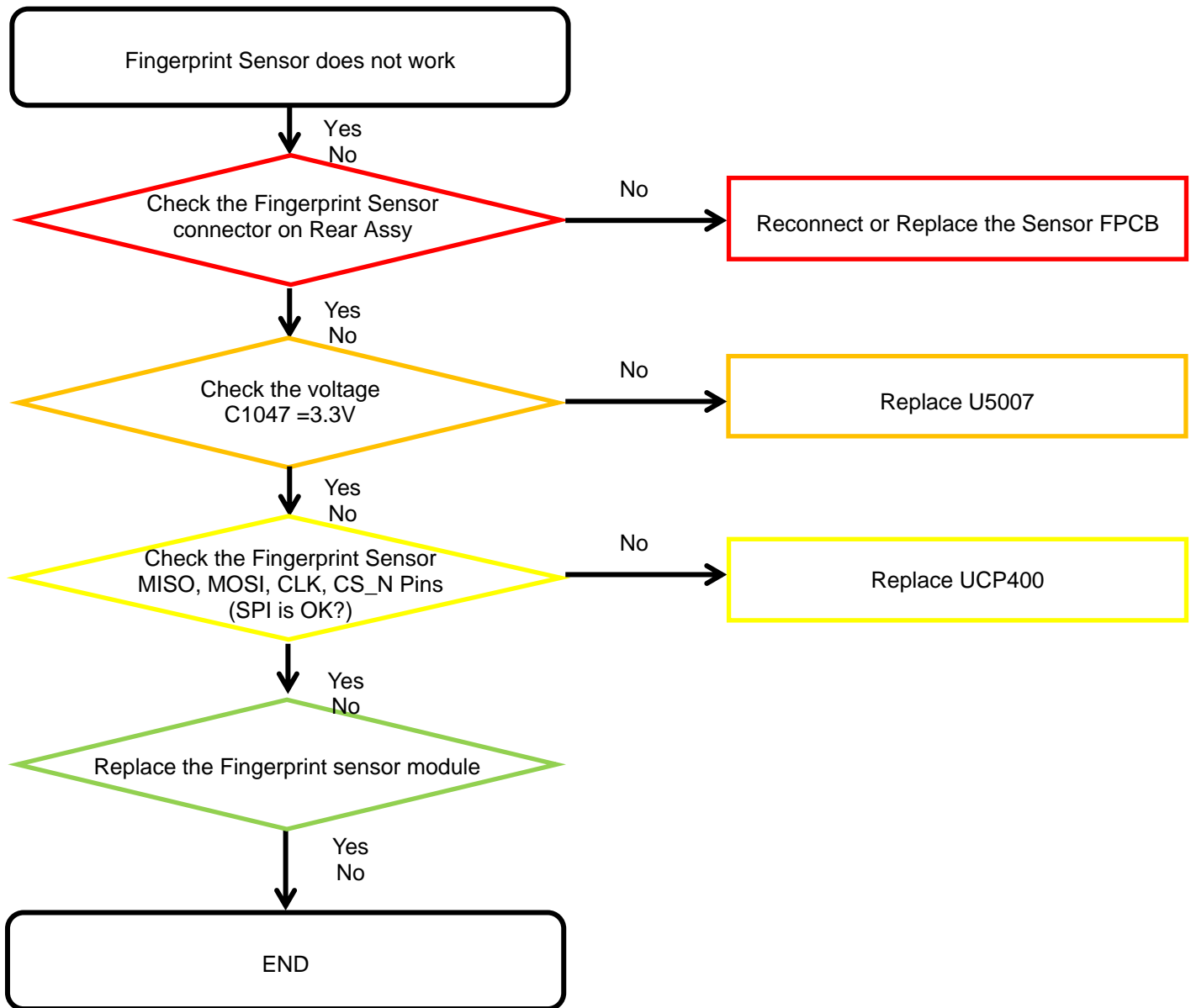
8. Level 3 Repair

8-4-7-4. Hall Sensor



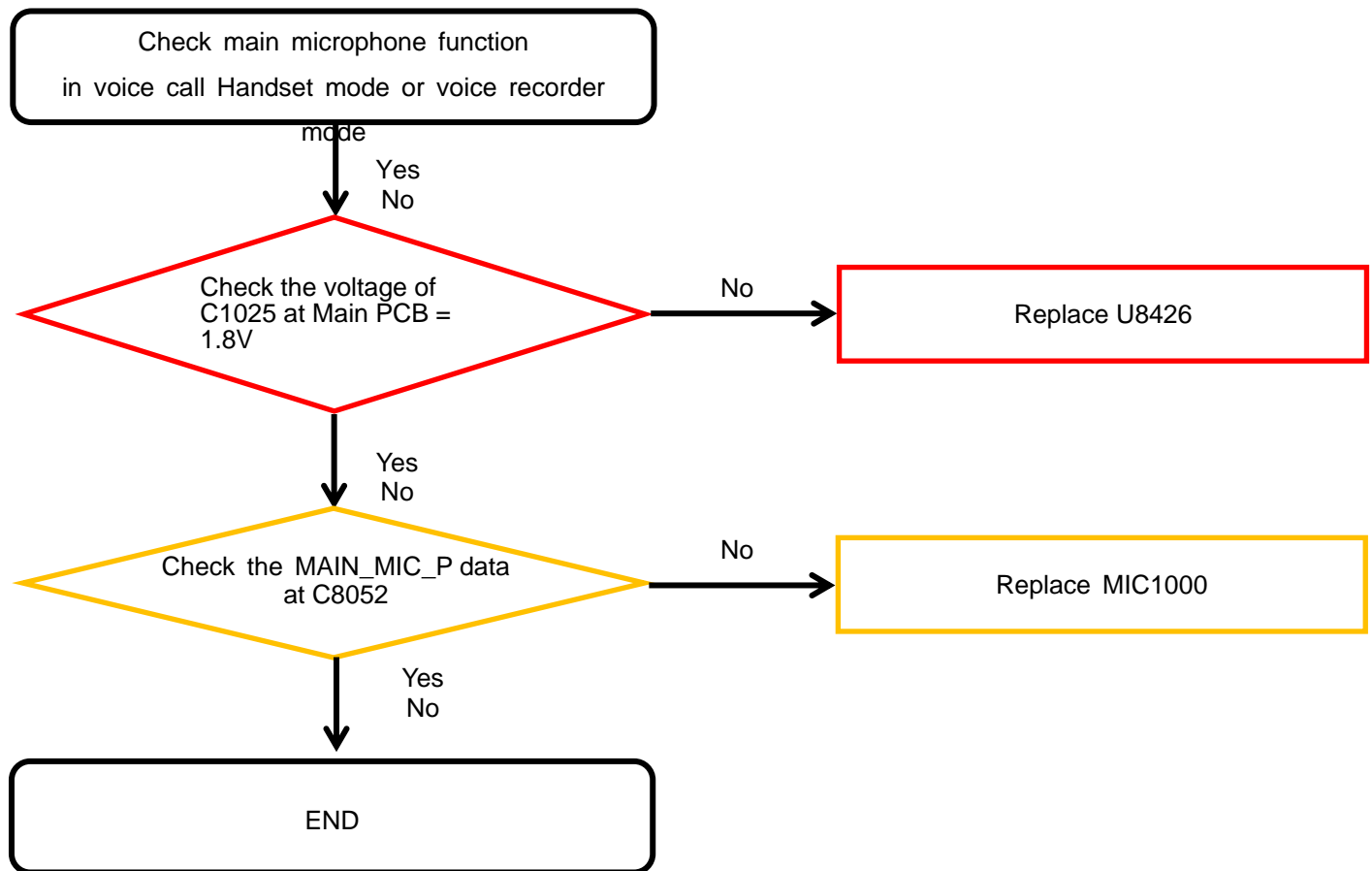
8. Level 3 Repair

8-4-7-5. Fingerprint Sensor



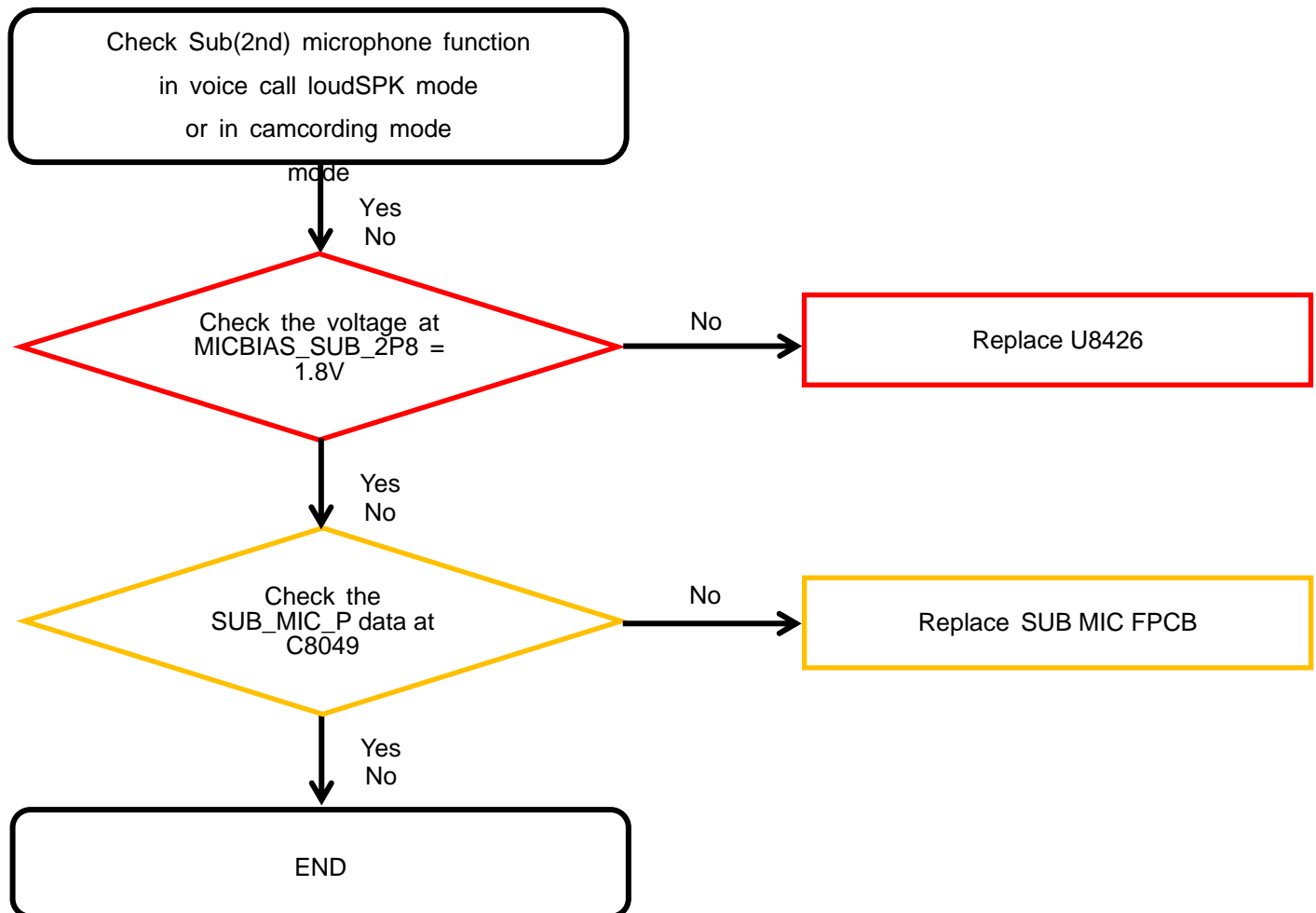
8. Level 3 Repair

8-4-8-1. Microphone Part - Main MIC



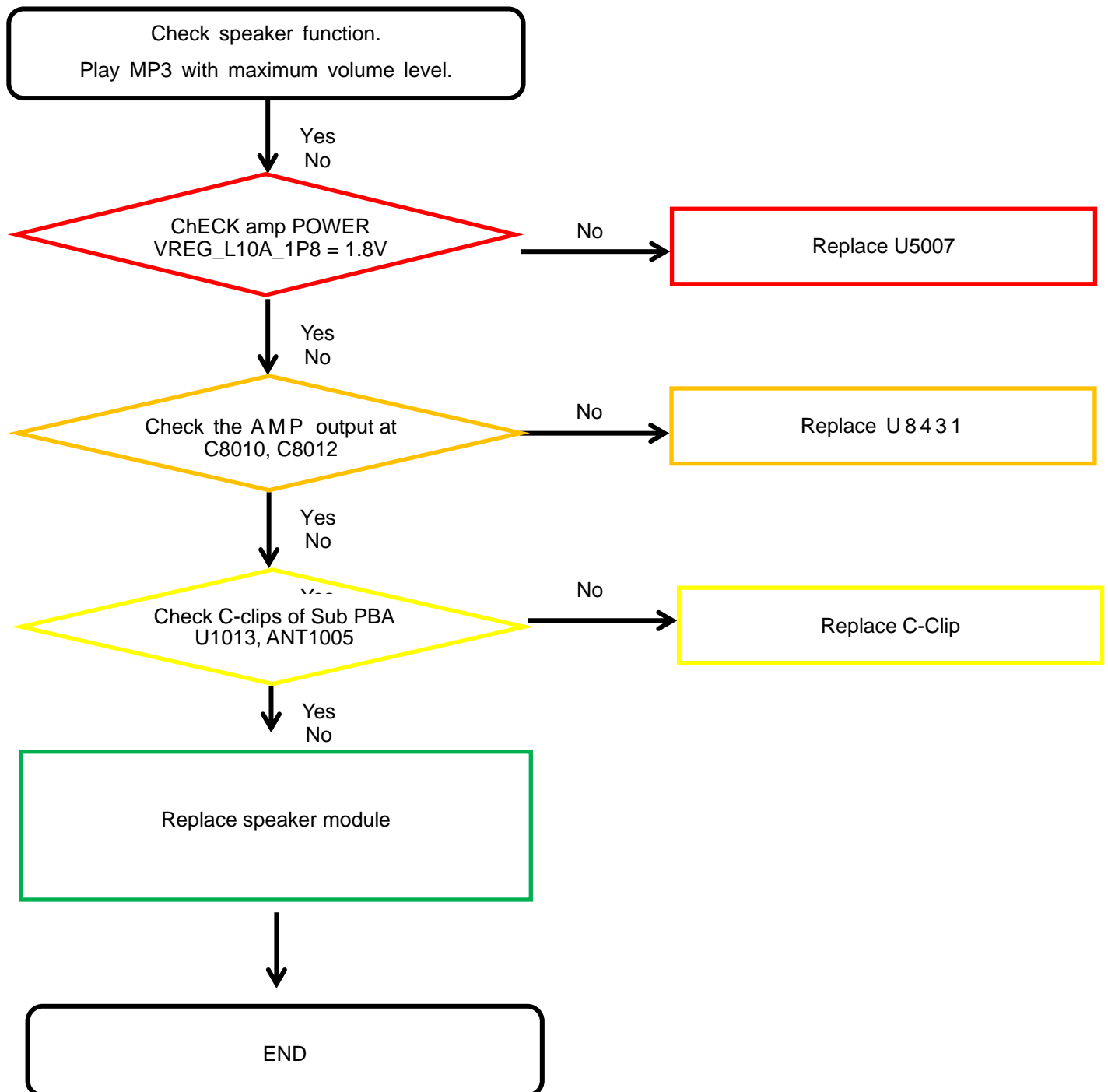
8. Level 3 Repair

8-4-8-2. Microphone Part - Sub(2nd) MIC



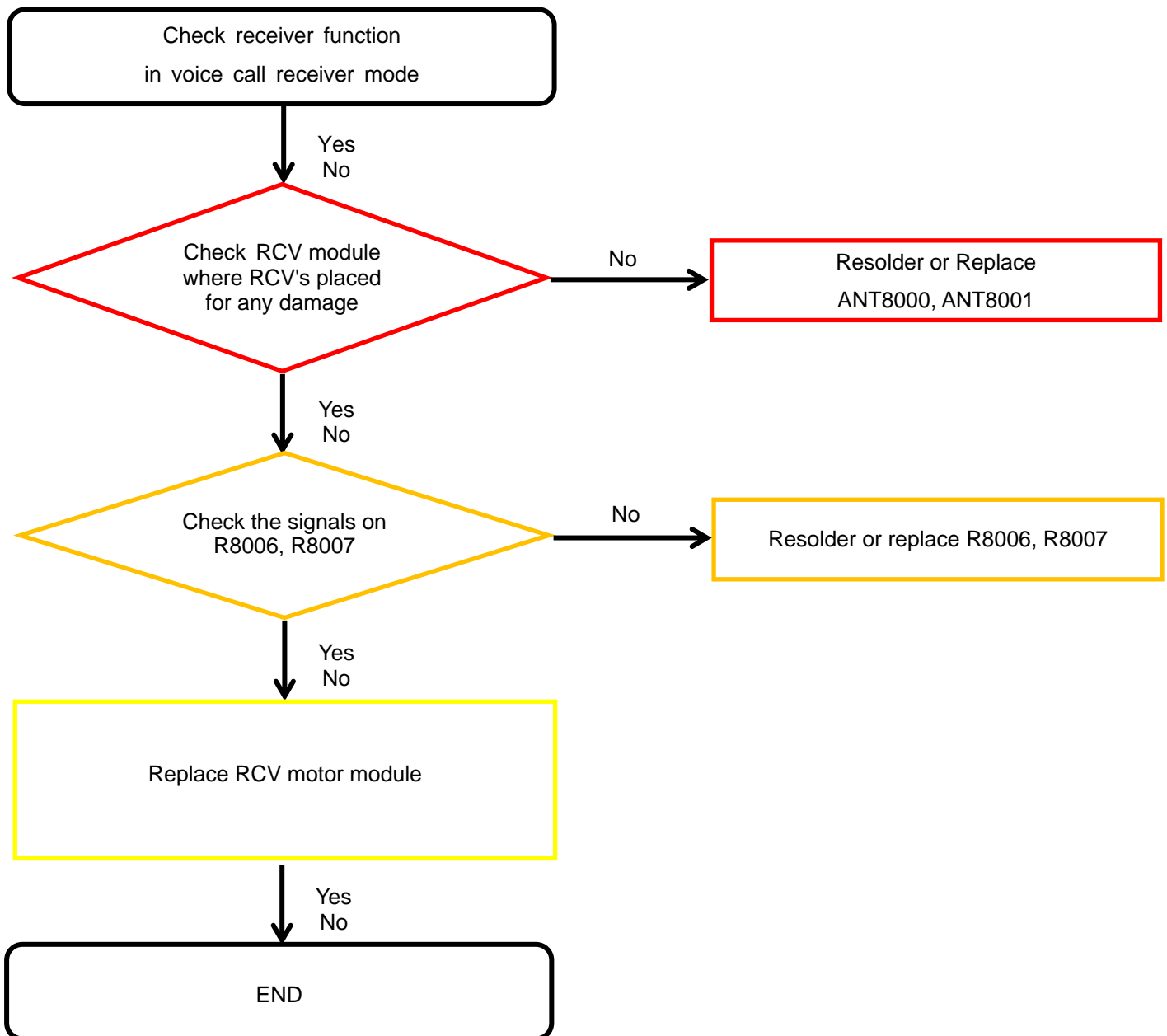
8. Level 3 Repair

8-4-9. Speaker Part



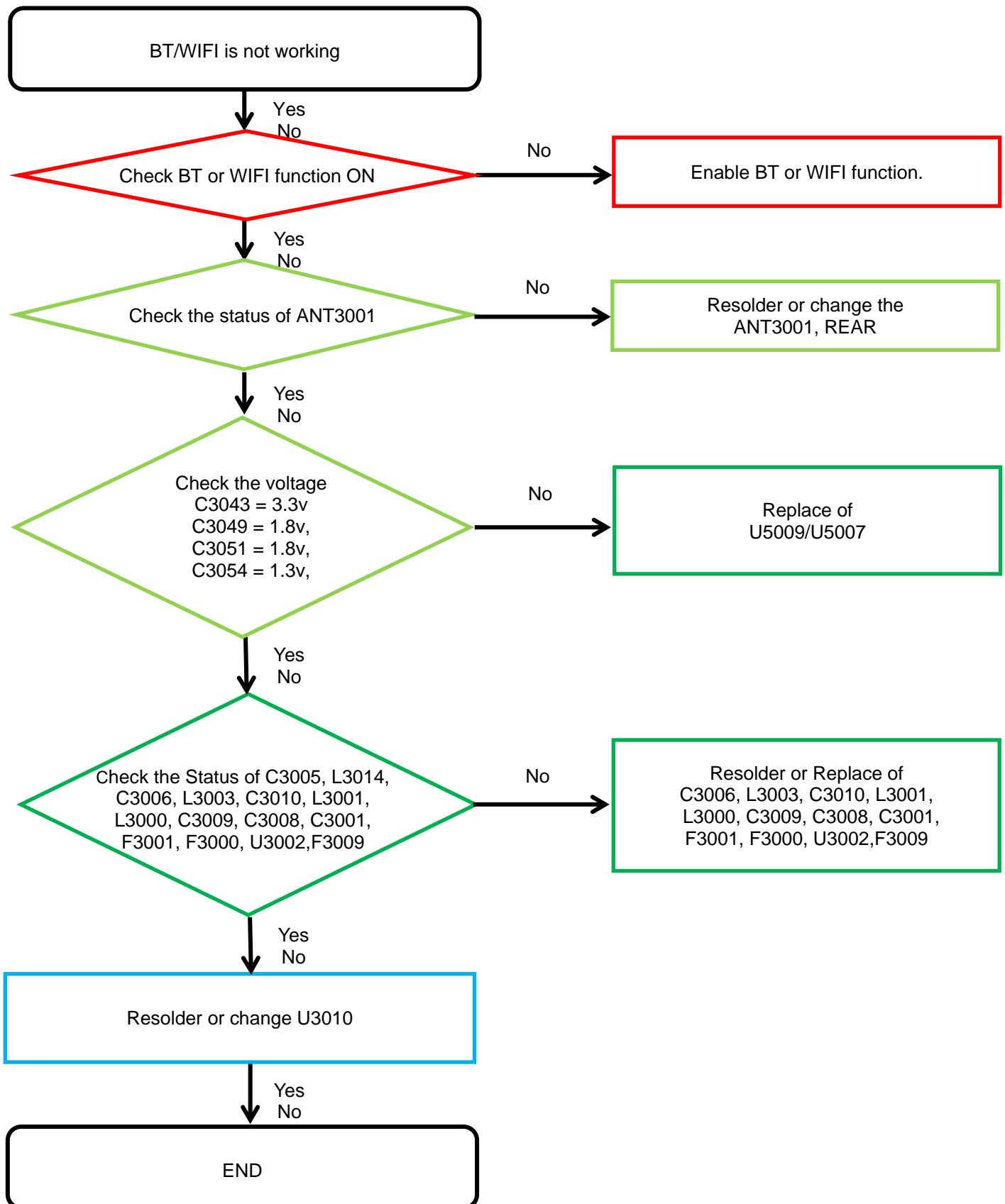
8. Level 3 Repair

8-4-10. Receiver Part / Vibration Motor



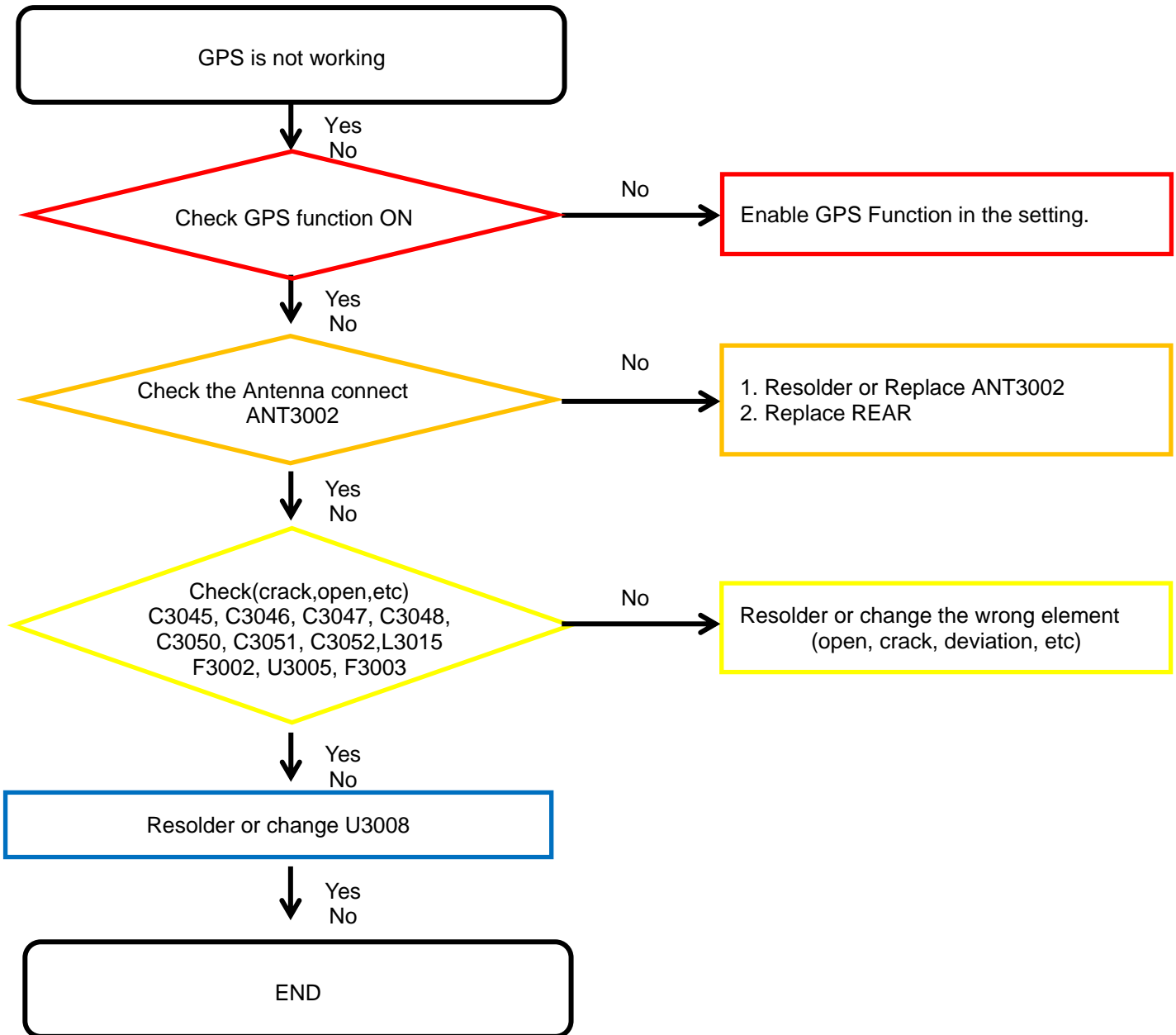
8. Level 3 Repair

8-4-11. BT/WIFI



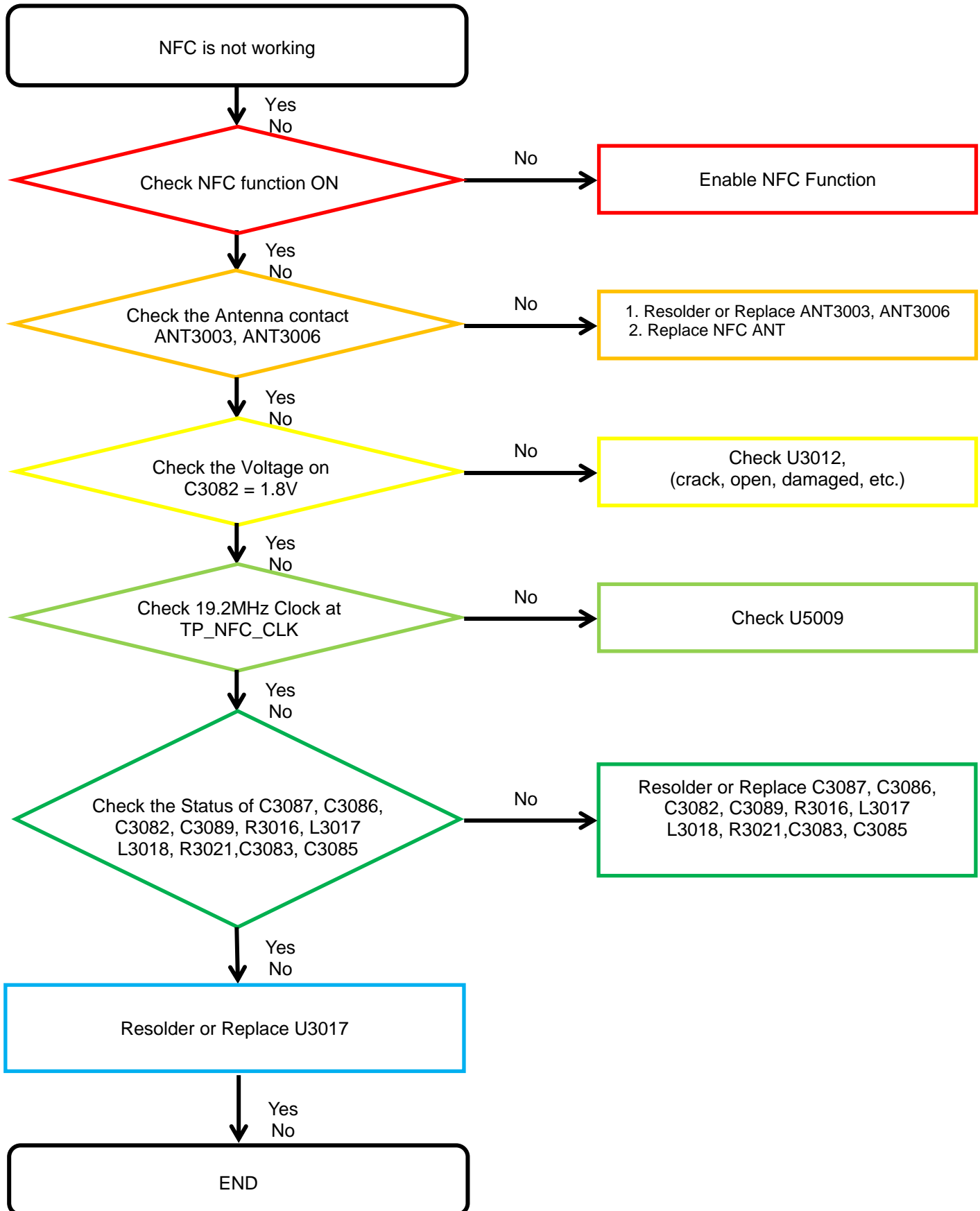
8. Level 3 Repair

8-4-12. GPS



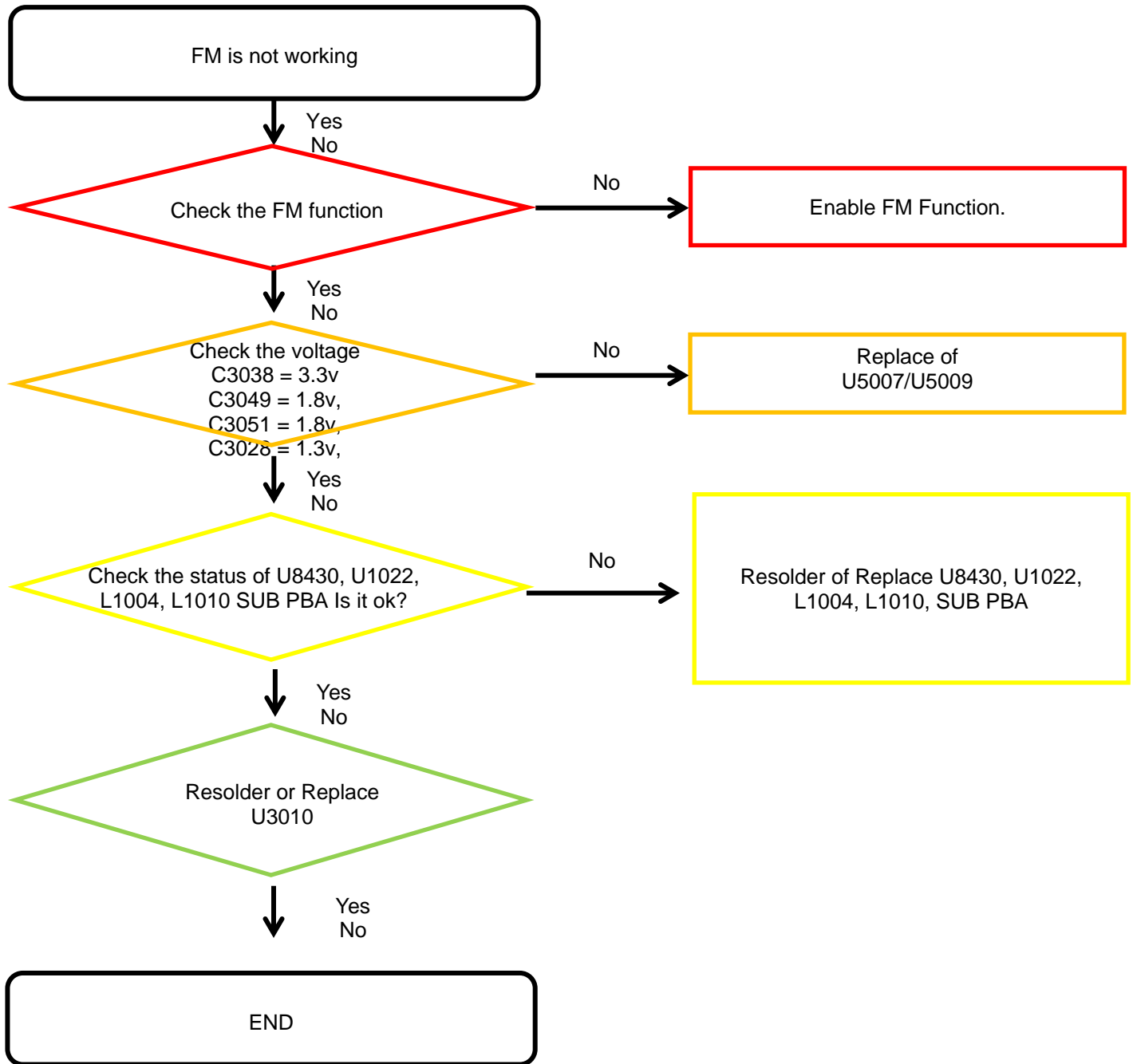
8. Level 3 Repair

8-4-13. NFC



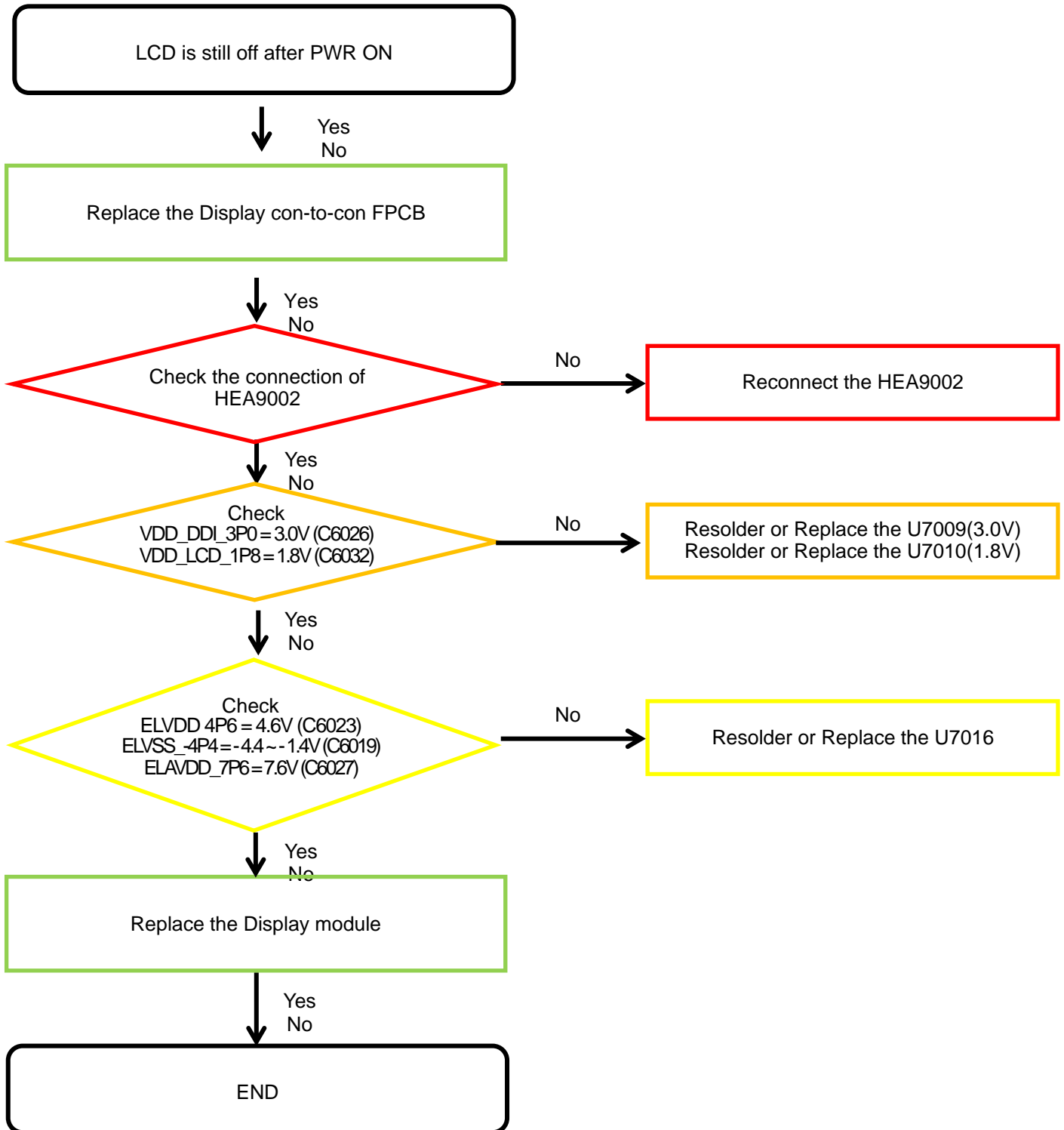
8. Level 3 Repair

8-4-14. FM radio part



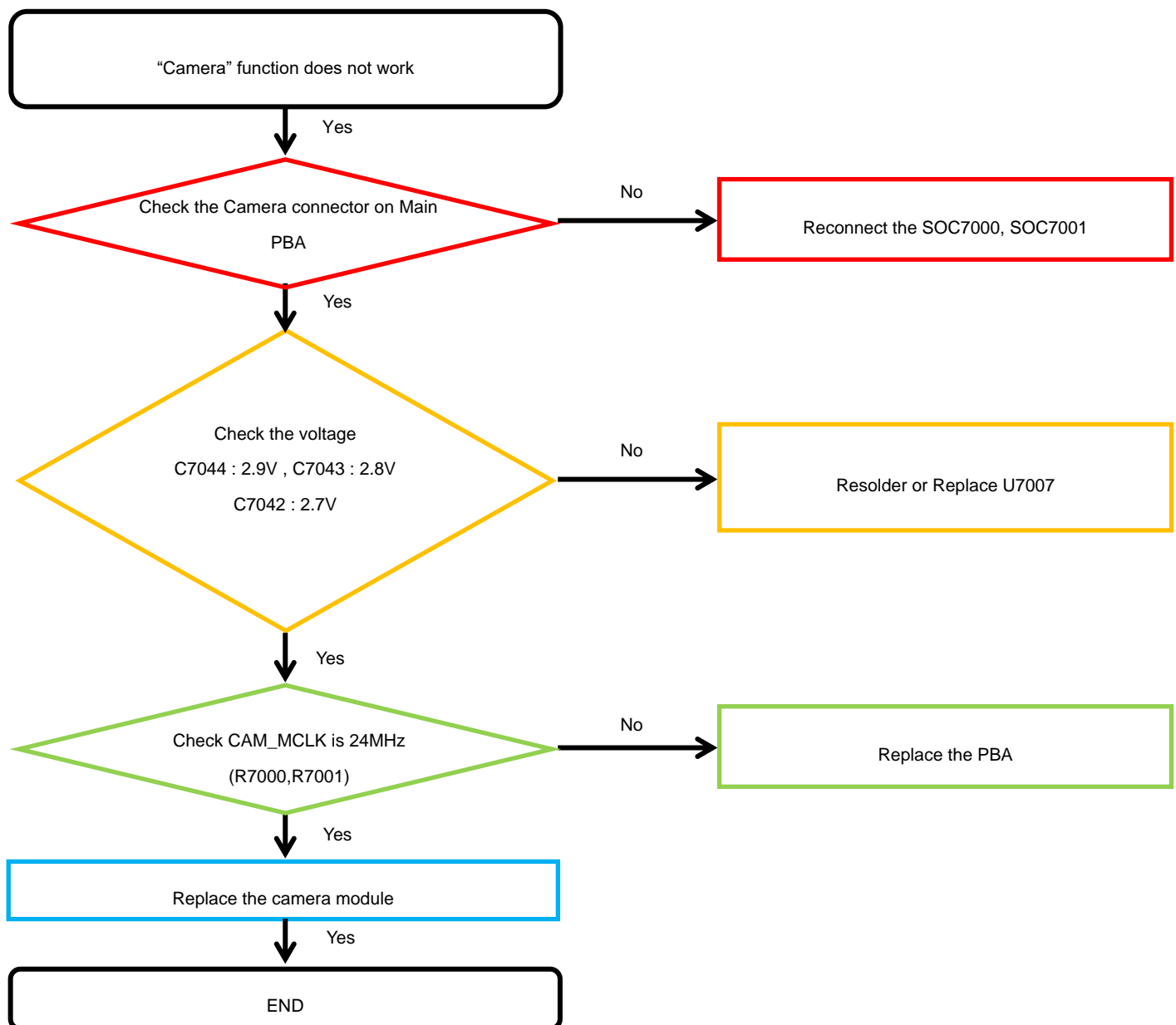
8. Level 3 Repair

8-4-15. Display



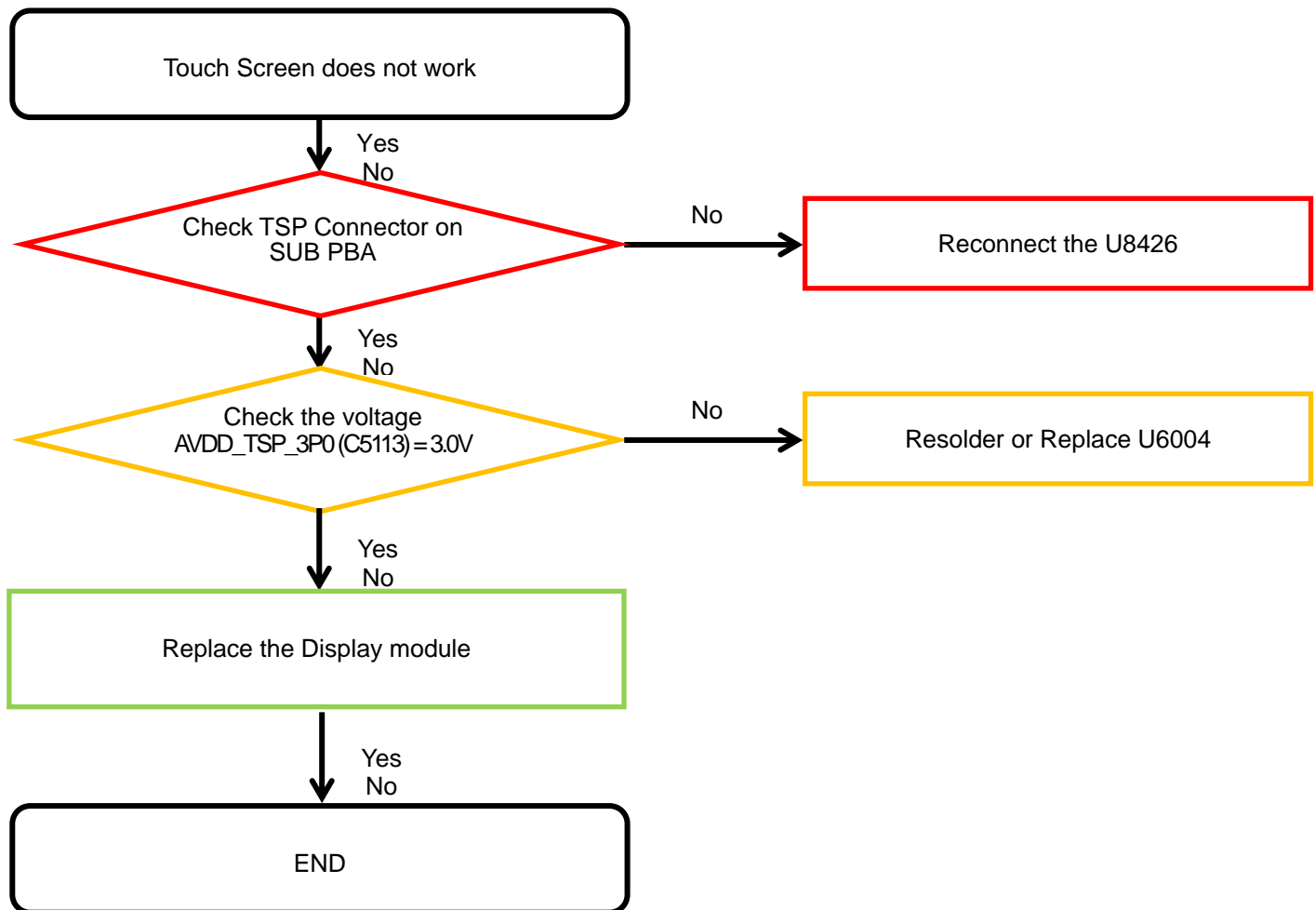
8. Level 3 Repair

8-4-16. Triple Camera



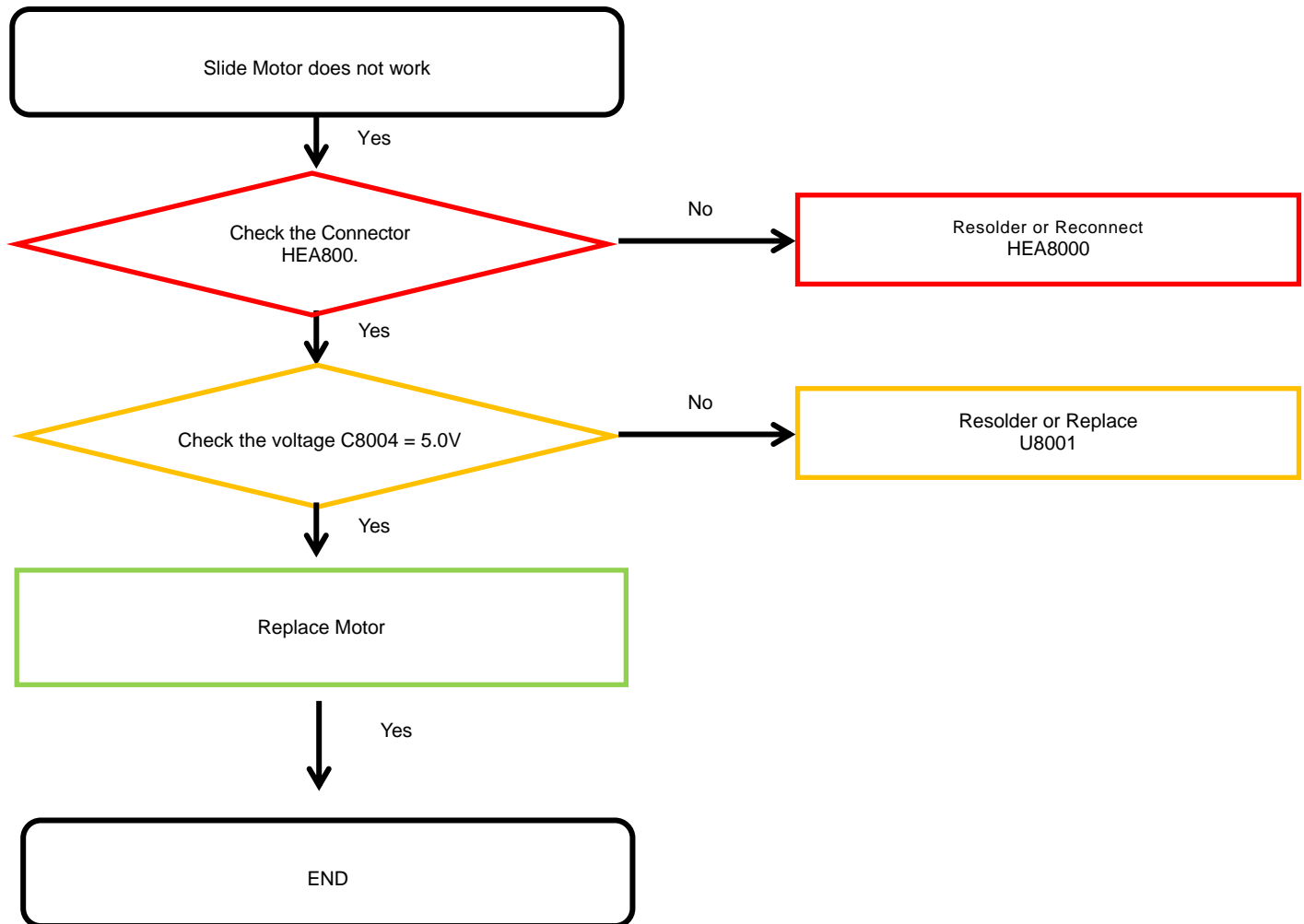
8. Level 3 Repair

8-4-17. TSP



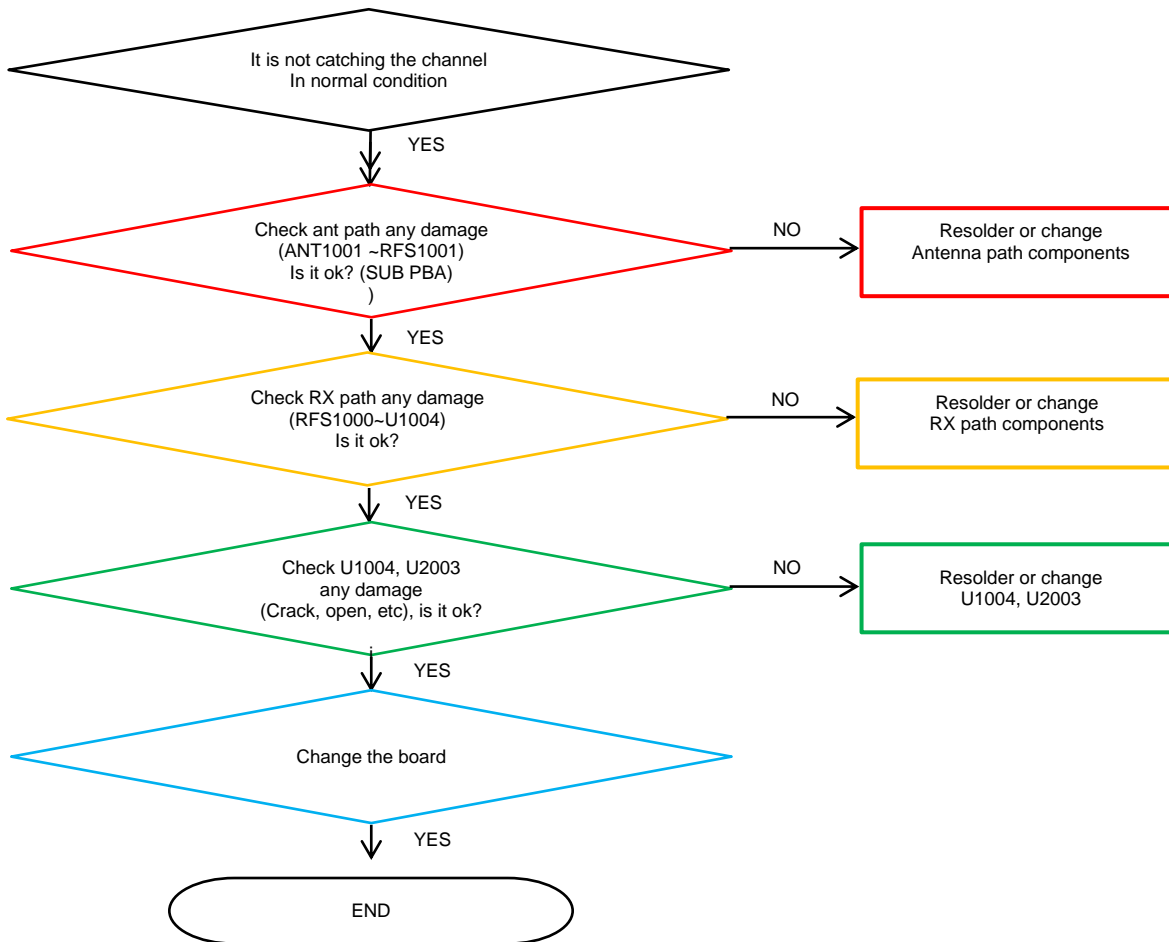
8. Level 3 Repair

8-4-18. Slide motor



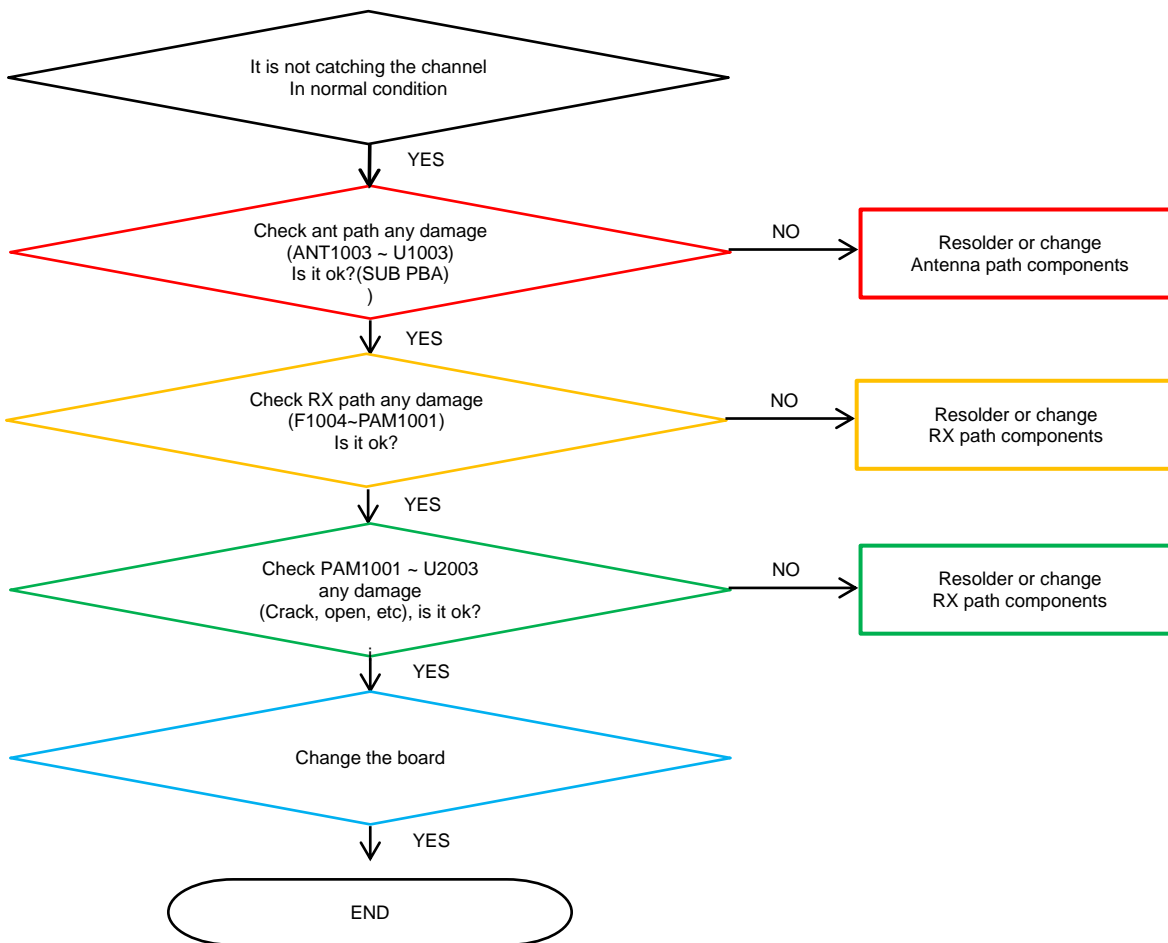
8. Level 3 Repair

8-4-19. GSM 850/900/, WCDMA B5/8, LTE B5/8/12/13/17/20/26/28 PRx



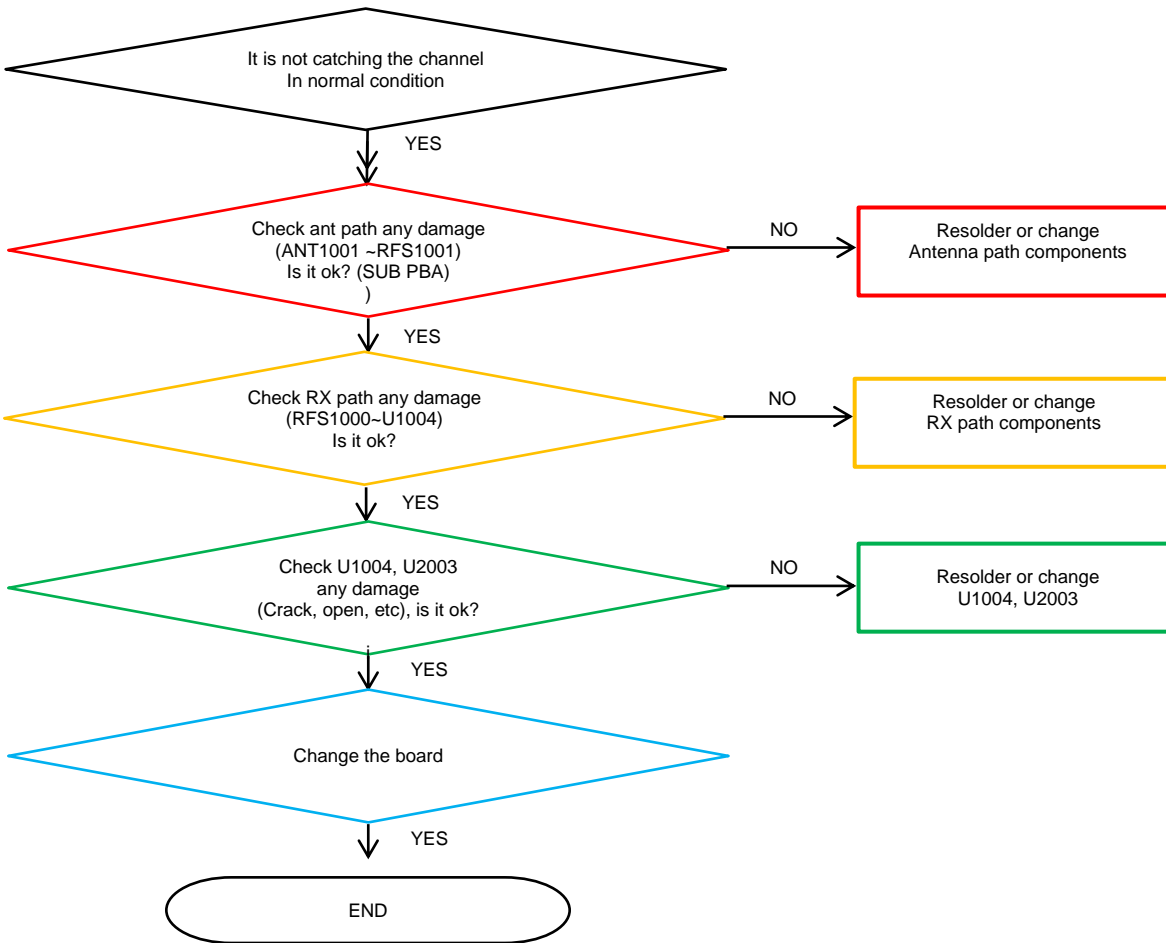
8. Level 3 Repair

8-4-20. LTE B7/38/40/41 PRx



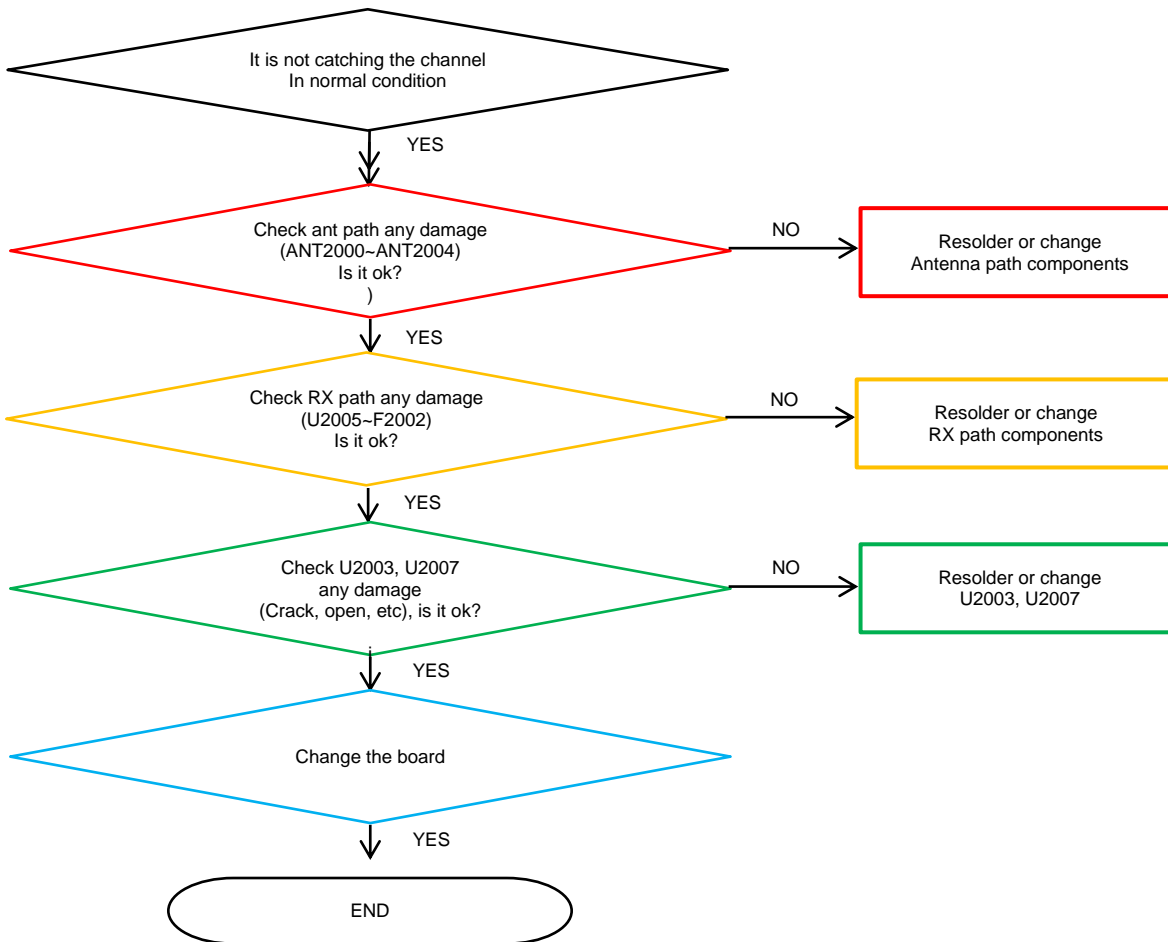
8. Level 3 Repair

8-4-21. GSM DCS/PCS, WCDMA B1/2/4, LTE B1/2/3/4/34/39/66 PRx



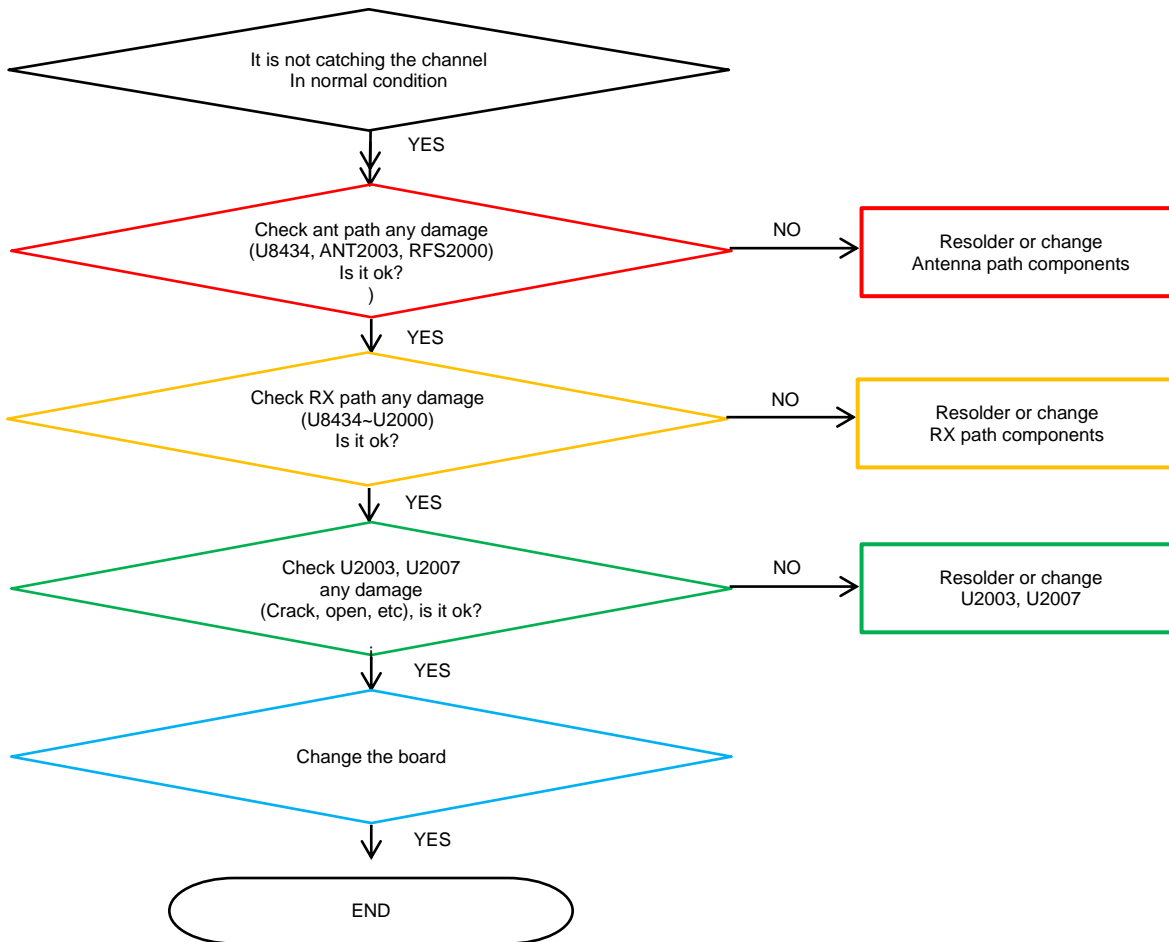
8. Level 3 Repair

8-4-22. GSM 850/900, WCDMA B5/8, LTE B5/8/12/13/17/20/26/28 DRx



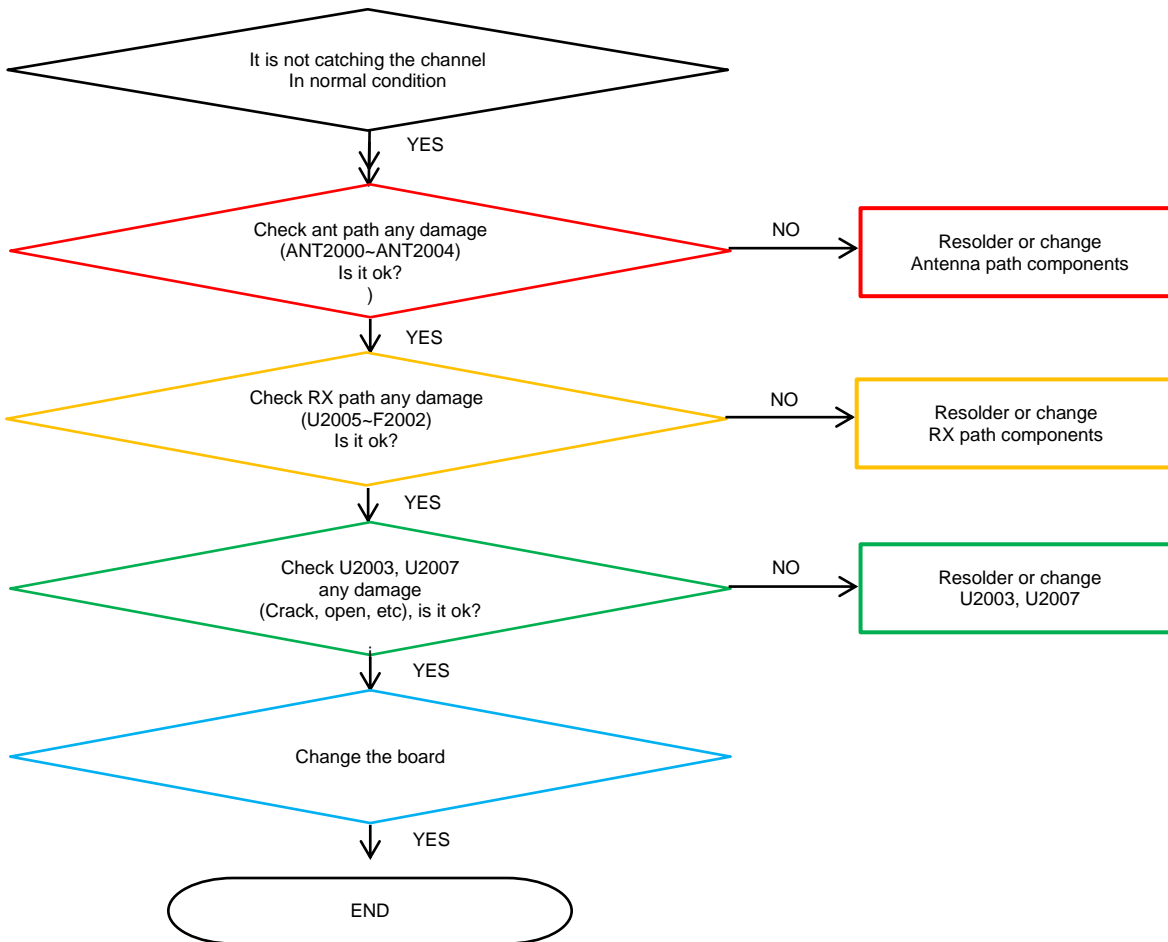
8. Level 3 Repair

8-4-23. LTE B7/38/40/41 DRx



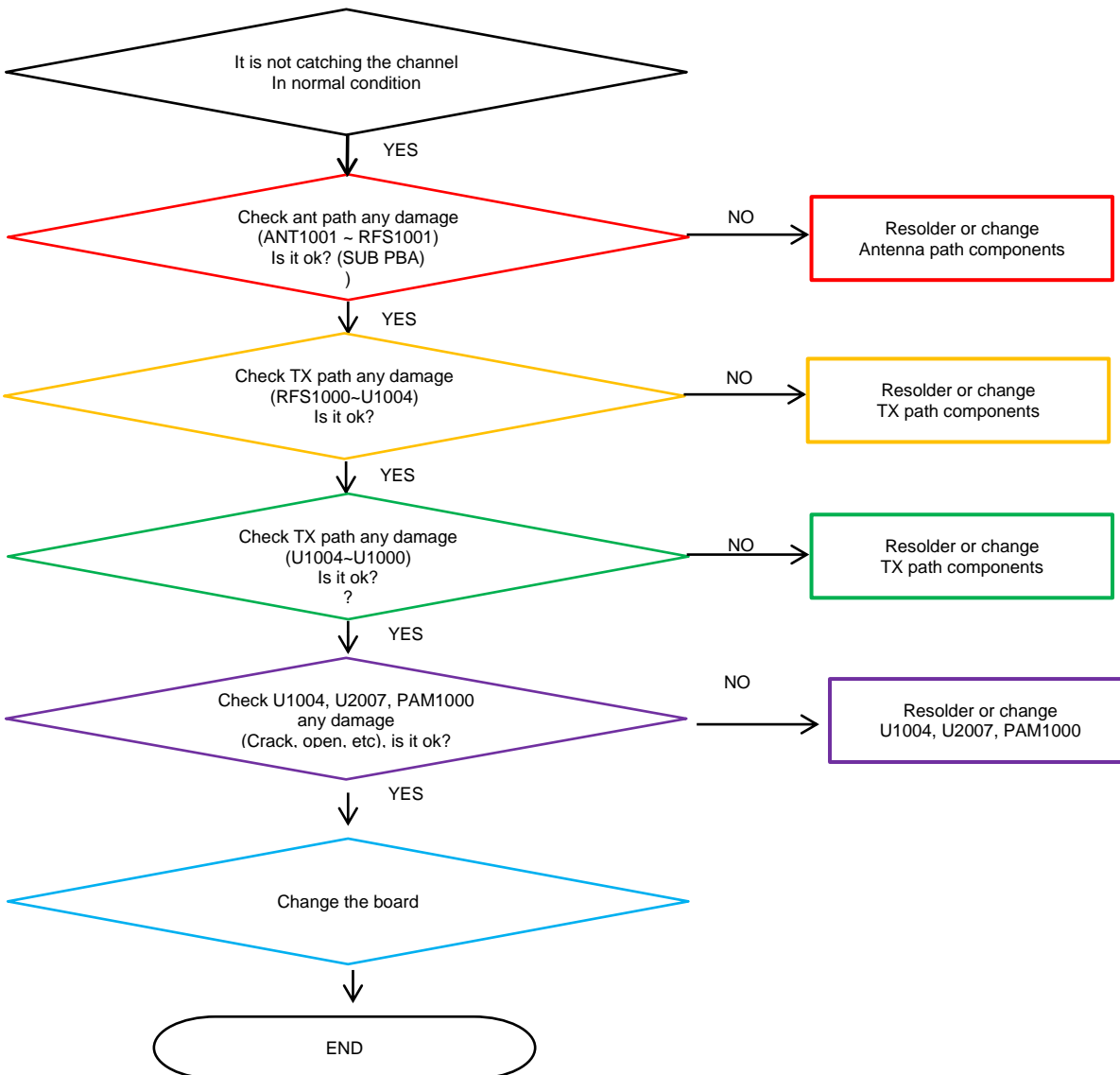
8. Level 3 Repair

8-4-24. GSM DCS/PCS, WCDMA B1/2/4, LTE B1/2/3/4/34/39/66 DRx



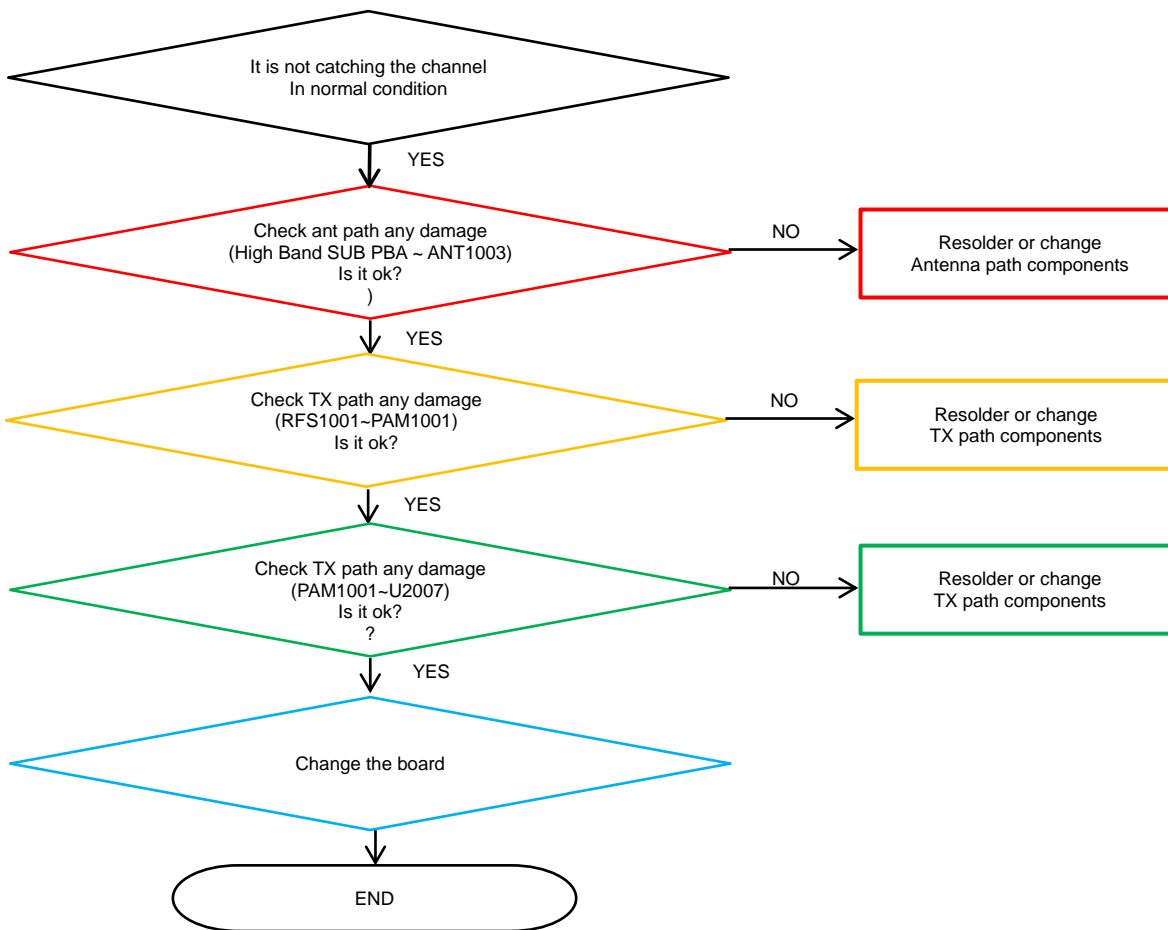
8. Level 3 Repair

8-4-25. GSM 850/900, WCDMA B5/8, LTE B5/8/12/13/17/20/26/28 TX



8. Level 3 Repair

8-4-26. LTE B7/38/40/41 Tx



8. Level 3 Repair

8-4-27. GSM DCS/PCS, WCDMA B1/2/4, LTE B1/2/3/4/34/39/66 Tx

