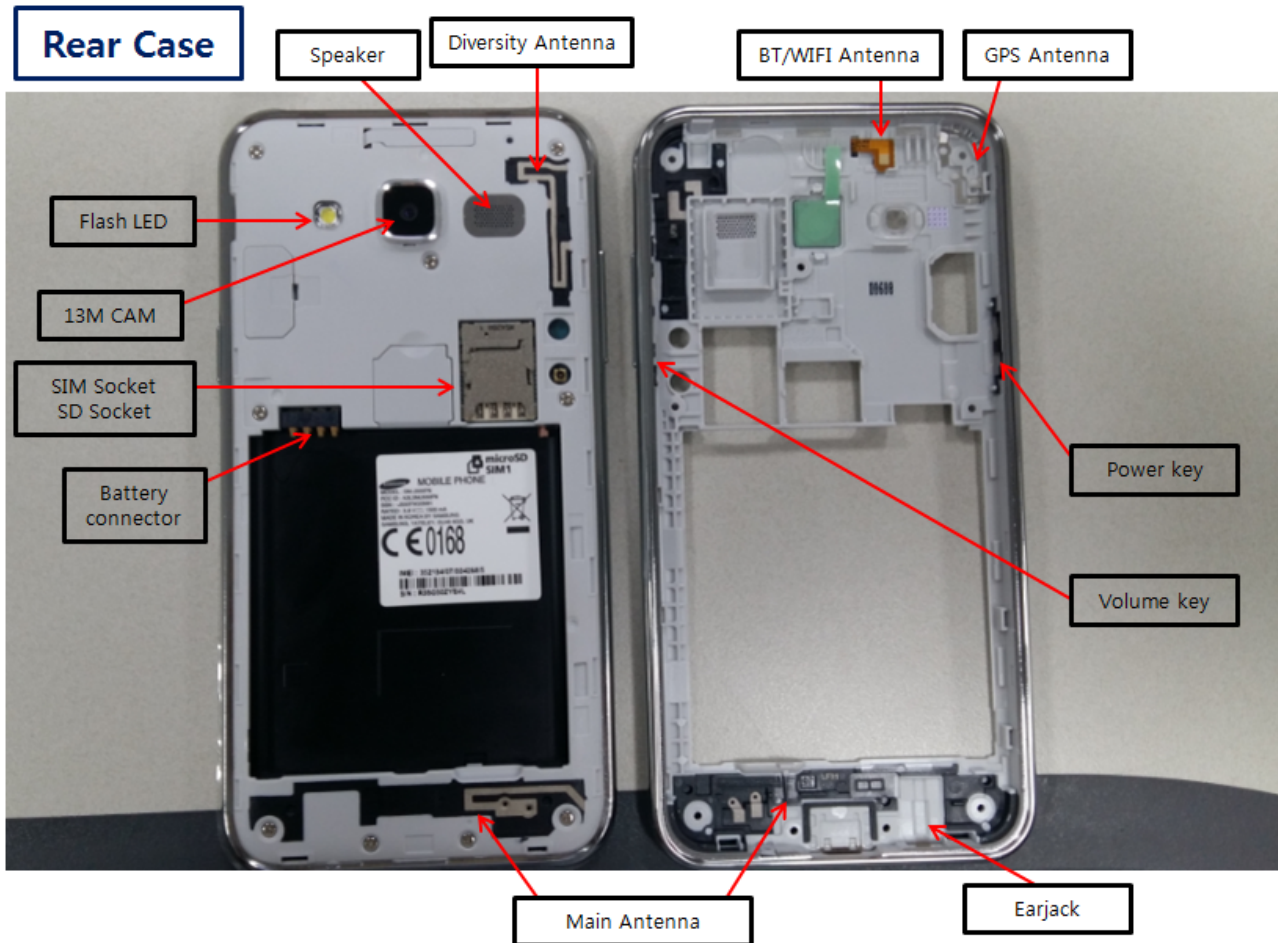


7. Level 2 Repair

7-1. Components on the Rear Case



7-2. Pre-requisite

<p>Tweezers / Disass'y Stick / Screw Driver / Dissolution jig.</p>	<p>Anti-statoc Gloves</p>
<p>OCTA Disassembly Holder</p>	<p>Anti-static Mat</p>
<p>Acryl Jig Rework Form</p>	<p>Glass Absorbers (2ea)</p>
<p>Tape Rework Form</p>	<p>Mobile Dryer</p>

7-3. Parts which must be changed after repair

<p>Assy_OCTA_Tape [GH81-13024A]</p>	
<p>Assy_OCTA_CU_SHEET [GH81-13050A]</p>	
<p>Touch Key TOP TAPE [GH81-13060A]</p>	

7-4. Disassembly

1 1) Put the device in the chamber for 5~10 minutes under 70~80°C.
2) Detech the OCTA with Disass'y JIG.

*** Caution**
1) Be Careful not to Damage of PBA
2) It uses the Dissolution jig.

2 1) Disassemble the LCD connector

*** Caution**

3 1) Unscrew red point

*** Caution**
1) Be care of scratch.

4 1) Detach the 11 point hooks in order.
2) Disassemble the bracket.

*** Caution**
1) Be Careful not to Damage of PBA
(Must remove the 6th hook.)

*** Pull down the bracket.**

5

1) Disassemble the PBA Assy.



*** Caution**

1) Be careful not to damage.

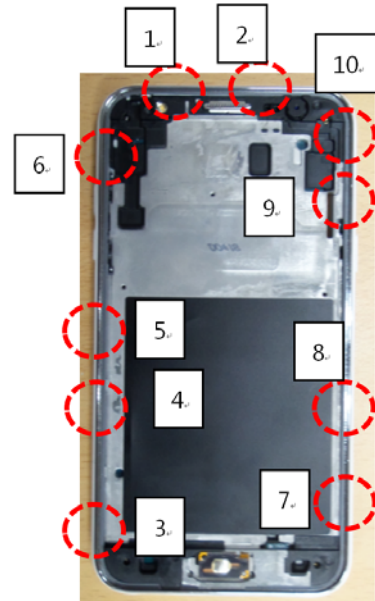
7-5. assembly

<p>1 1) Attach Bracket Assy</p> 	<p>2 1) Attach the Bracket Assy</p> 
<p>* Caution 1) Be care of tilting.</p>	
<p>3 1) Assemble PBA to the Bracket</p> 	<p>4 1) Assemble Rear</p> 
<p>* Caution 1) Be careful not to Damage. 2) Be careful not to Damage SPK FPCB</p>	

5 | 1) Assemble Rear Assy & PBA Assy

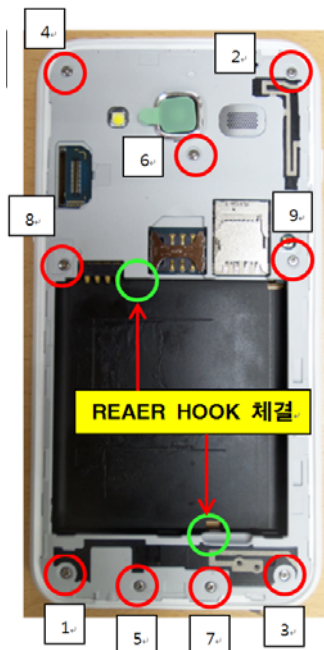


6 | 1) Assemble Rear Assy & PBA Assy (2)



※ Caution
1) Be careful not to Damage.

7 | 1) Screw 9 powints in order.



8 | 1) Assemble OCTA and Rear Assy

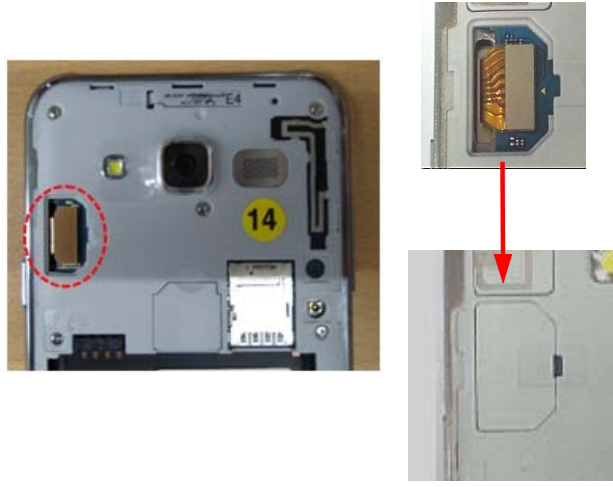


※ Caution
Torque : 1.1 Kg/cm²
Screw : 1.4 * 3.5 (6001-003227)

※ Caution
1) Must Check Home key assembled.

9

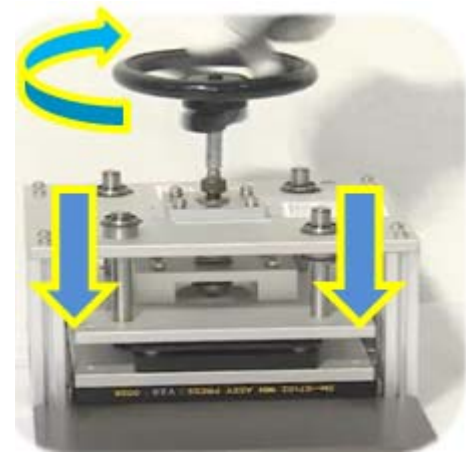
- 1) Assemble the LCD Conn..
- 2) Assemble the LCD Conn. cap.



※ Caution

10

- 1) Press the set using pressure JIG.



※ Caution
- Press time : 14.7 sec