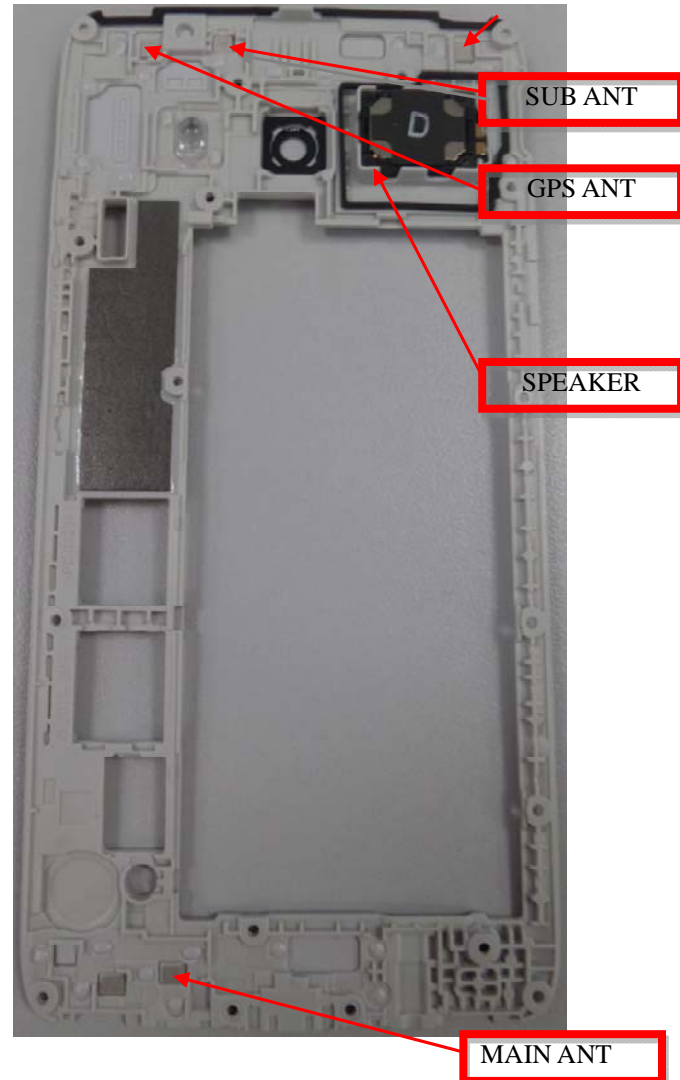
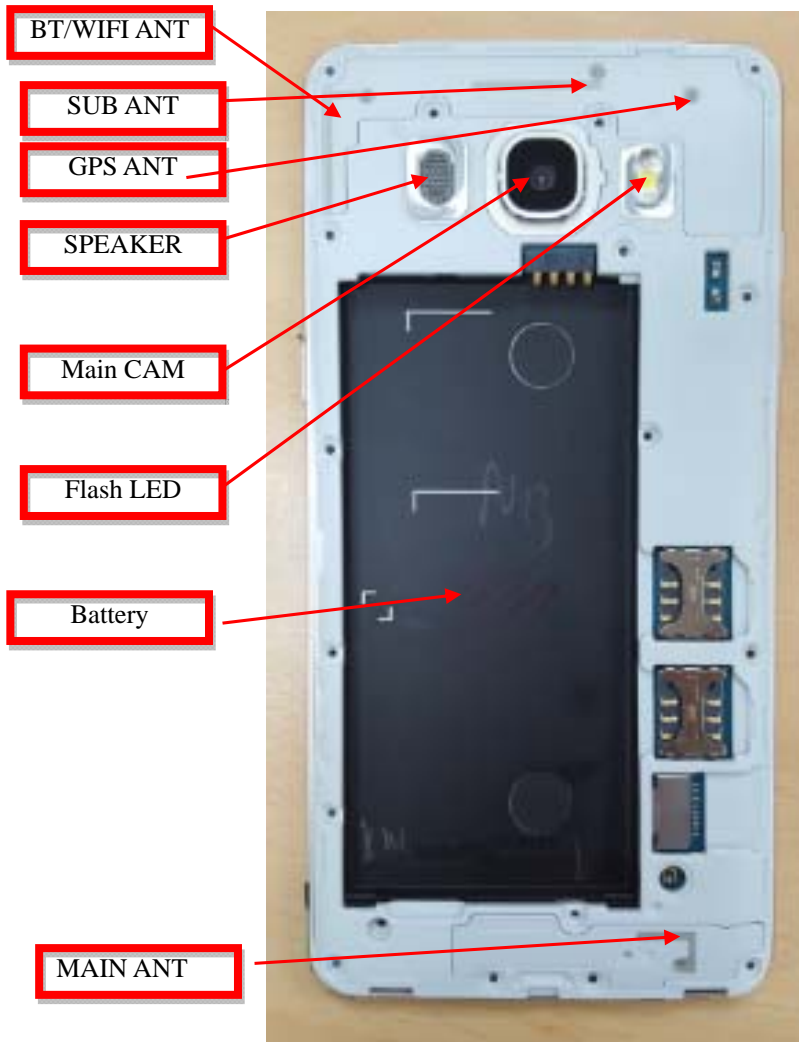





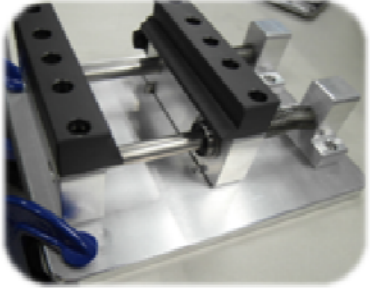
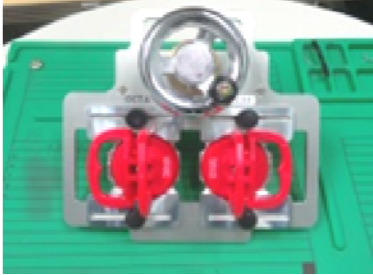
7. Level 2 Repair

7-1. Components on the Rear Case



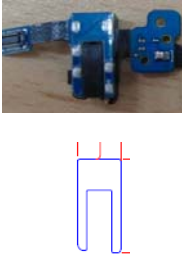
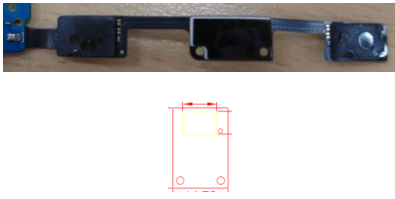
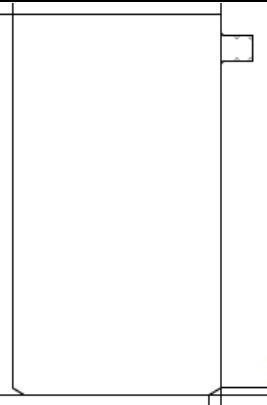
7. Level 2 Repair

7-2. Pre-requisite

	
<p>Tweezers / Disass'y Stick / Screw Driver</p>	<p>Anti-static Gloves</p>
	
<p>Clean Swab</p>	<p>Ethyl Alcohol</p>
	
<p>OCTA Disassembly Holder</p>	<p>OCTA Disassembly Upper</p>
	
<p>Mobile Dryer</p>	<p>OCTA Attach JIG</p>

7. Level 2 Repair

7-3. Parts which must be changed after repair

BOM Description	Picture	Remarks
<p>A/S-SM-J5108 DOUBLE TAPE ASS'Y 1 [GH81-13830A]</p>		
<p>A/S-SM-J5108 DOUBLE TAPE 1 [GH81-13831A]</p>		
<p>A/S-SM-J5108 CONDUCTIVITY DOUBLE TAPE [GH81-13832A] - home key</p>		
<p>A/S-SM-J5108 PORON TAPE ASS'Y 1 [GH81-13833A] - back</p>		<p>Replace when repair Front part</p>
<p>A/S-SM-J5108 PORON TAPE ASS'Y 2 [GH81-13834A] - menu</p>		
<p>OCTA SCF Sponges [GH81-13835A]</p>		

7. Level 2 Repair

7-4. Disassembly

- 1** Put the device in the chamber for 5~25 minutes under 70~80℃. Detach the OCTA with disass'y JIG.



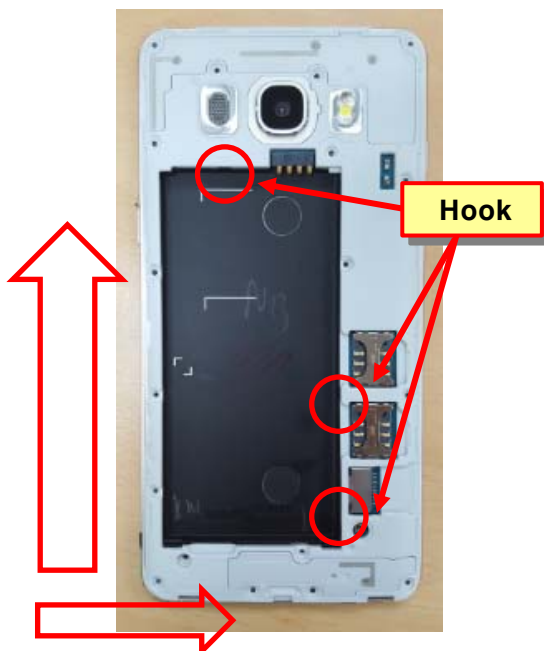
- 2** Unscrew 18 Point.



- ※ **Caution**
1) Be careful not to damage the set

- ※ **Caution**
1) Be care of Bracket-REAR Hook.

- 3** Disassemble the REAR. Start to disassemble bottom side



- 4** Unscrew 1 Point.



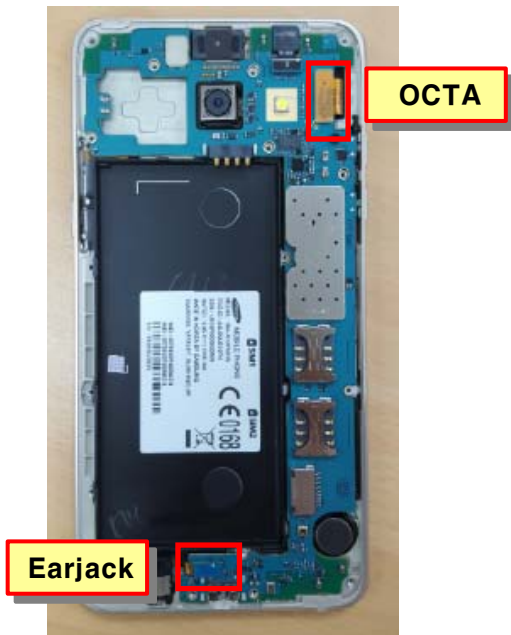
- ※ **Caution**
1) Be care of damage to PBA.

- ※ **Caution**
1) Be careful not to damage to PBA.

7. Level 2 Repair

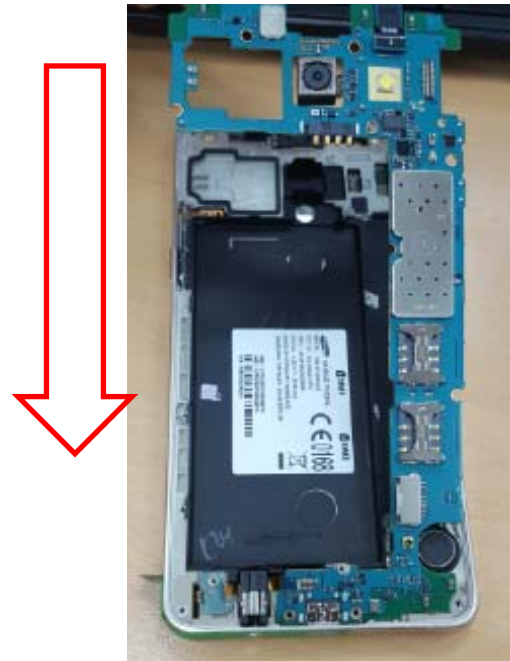
5

Detach 2 point Connector.



6

Disassemble the PBA.
Start to disassemble top side.



※ **Caution**

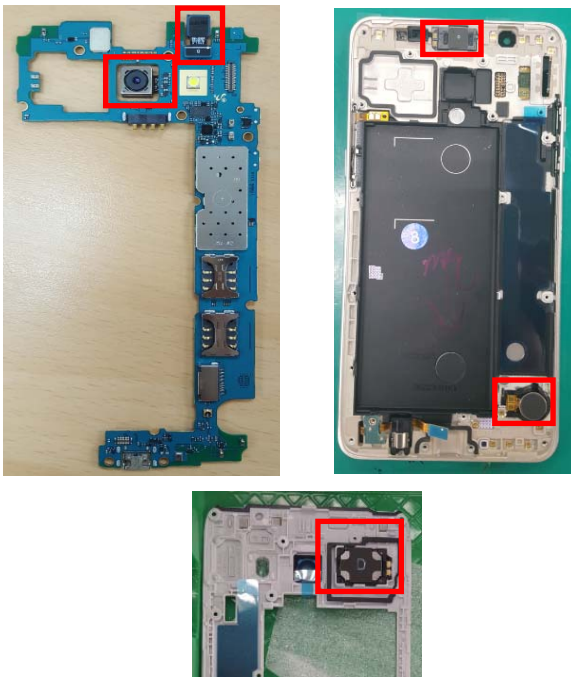
1) Be careful not to damage the PBA and FPCB.

※ **Caution**

1) Be careful not to damage the PBA

7

Disassemble the component



※ **Caution**

1) Be careful not to damage the Camera

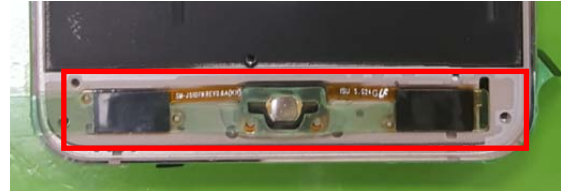
7. Level 2 Repair

7-5. Assembly

1 Assemble the Homekey to OCTA.



2 Assemble the Touch key and Earjack to bracket.



※ Caution

1) Be careful not to tilt the homekey.

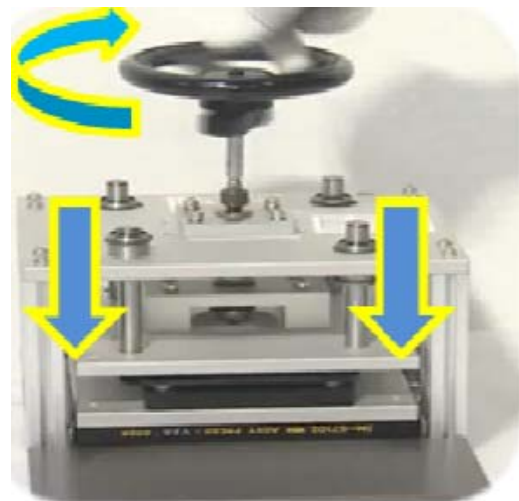
※ Caution

1) Be careful not to damage the FPCB.

3 Assemble OCTA and Bracket. Attach the OCTA connector.



**4 Press OCTA and Bracket. Pressure : 1N
Time : 1 minute**



※ Caution

1) Be careful not to damage the OCTA FPCB.

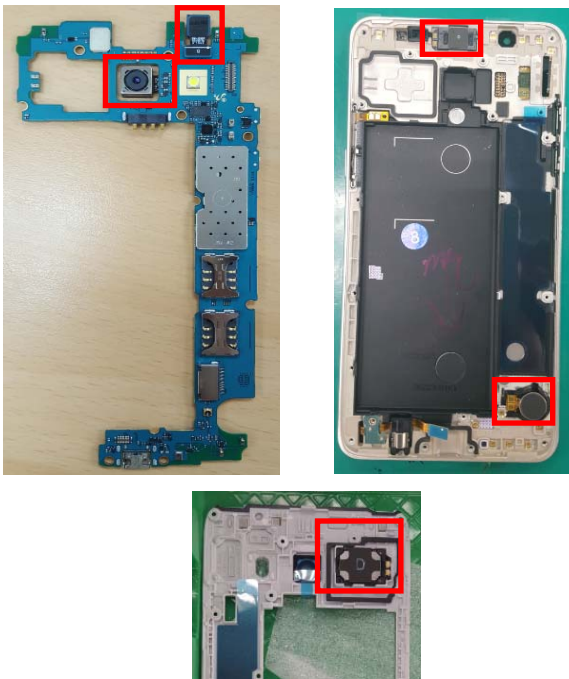
※ Caution

1) Be careful not to damage the OCTA.

7. Level 2 Repair

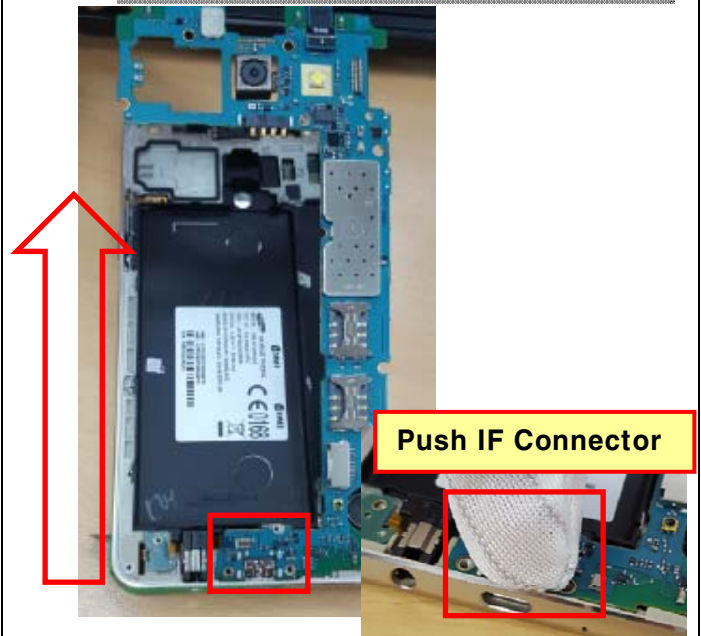
5

Assemble the component



6

Assemble PBA / Bracket.
Start to assemble bottom side.

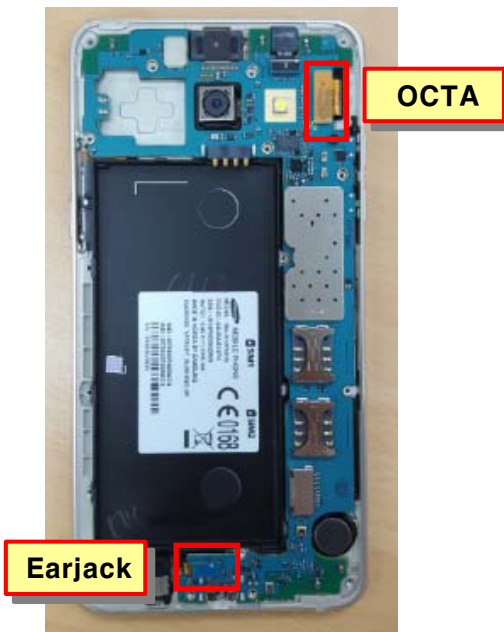


※ **Caution**
1) Be careful not to damage the component.

※ **Caution**
1) Be careful not to damage the PBA.

7

Attach 2 Point connector.



8

Screw the 1 points of the PBA.
Torque : $1.0 \pm 7.5\%$ Kgf · cm
Size : 1.4*2.5 (6001-001530)



※ **Caution**
1) Be careful not to damage the Connector.

※ **Caution**
1) Be careful not to damage the PBA.

7. Level 2 Repair

9

Assemble Front Assy with REAR.
Start to assemble top side.

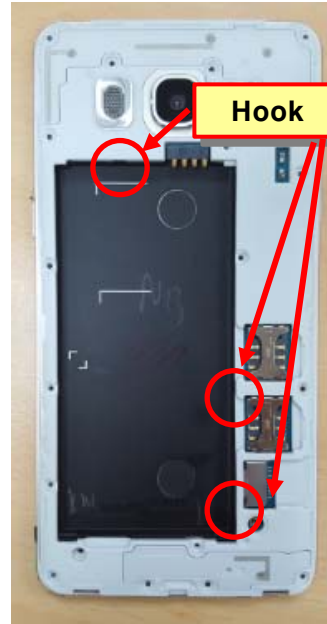


Checking
SPK sponge.



10

Assemble REAR hook and
Push the Rib.



※ **Caution**

- 1) Be careful not to damage the REAR.
- 2) Checking SPK Sponge.

※ **Caution**

- 1) Be care of Bracket-REAR Hook and Rib

11

Screw 18 point.
Torque : $1.3 \pm 7.5\%$ Kgf · cm,
Size : 1.4*3.0 (6001-003226)



※ **Caution**

- 1) Be careful not to damage the SET.