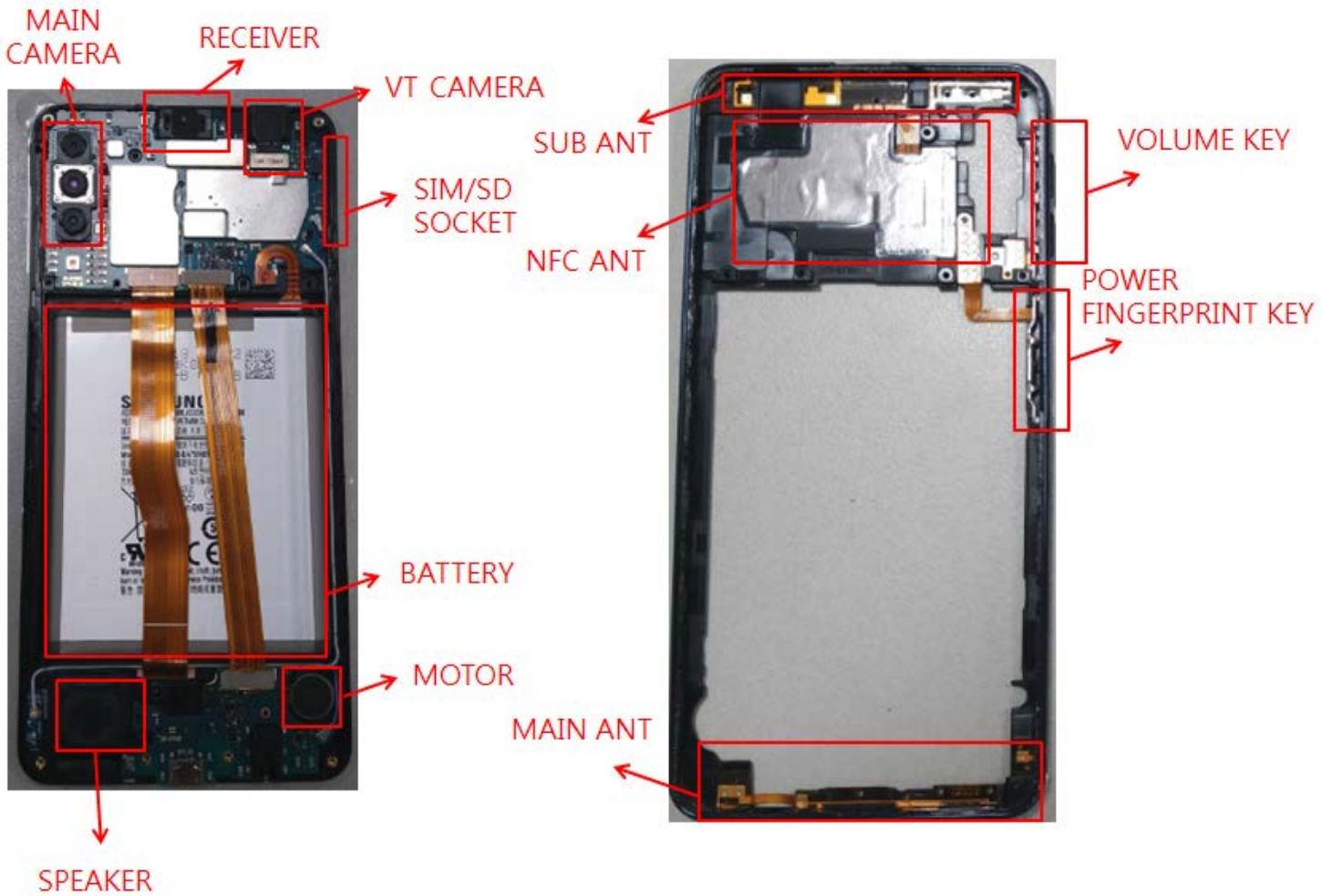


7. Level 2 Repair

7-1. Components on the Rear Case




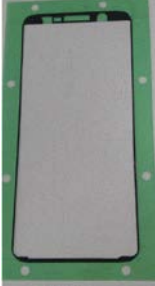
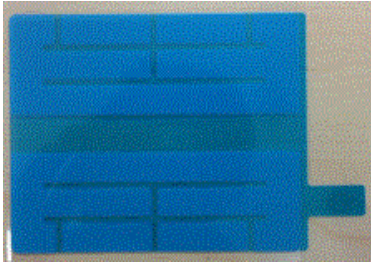

7. Level 2 Repair

7-2. Pre-requisite

	
<p>Tweezers / Disass'y Stick / Screw Driver</p>	<p>Anti-static Gloves</p>
	
<p>Anti-static Mat</p>	<p>Hot Plate</p>
	
<p>A OCTA Disassembly Holder</p>	<p>OCTA Disassembly Upper</p>
	
<p>Ethyl Alcohol</p>	<p>Cotton Swab</p>




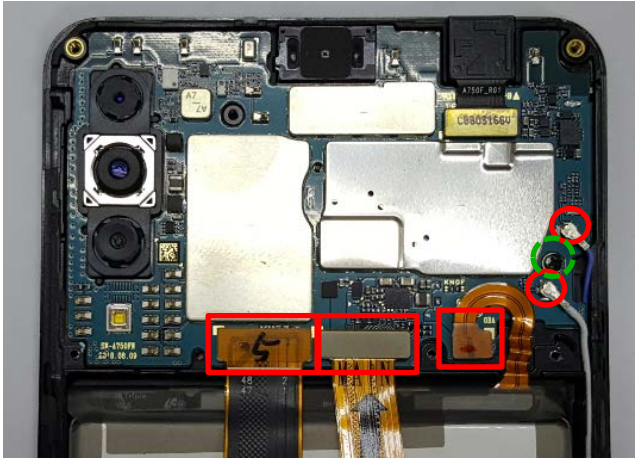
7. Level 2 Repair

7-3. Parts which must be changed after repair

BOM description & part code	Image	Remarks
<p>TAPE BACK GLASS [GH81-16200A]</p>		<p>Replace for Back Glass repair</p>
<p>Window Rework Tape [GH81-16201A]</p>		<p>Replace for OCTA repair</p>
<p>HR Tape [GH02-17137A]</p>		
<p>Fingerprint tape [GH81-16228A]</p>		<p>Replace for fingerprint repair</p>

7. Level 2 Repair

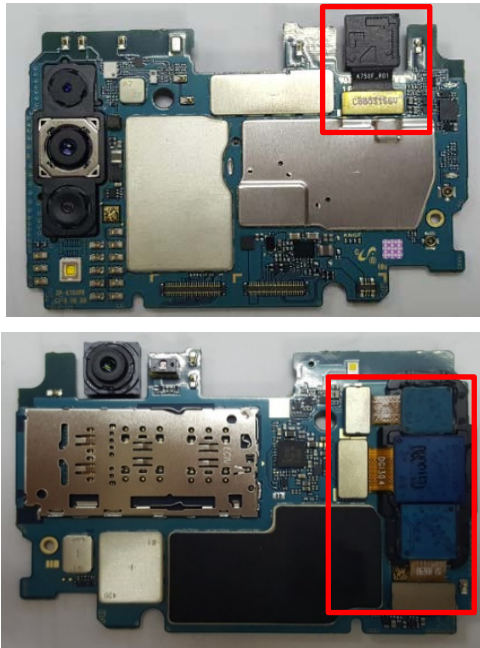
7-4. Disassembly

<p>1</p> <p>1) Put the device in the chamber or Hot plate as below heating condition</p> <ul style="list-style-type: none"> - SOC 68%↓: 70°C/10~20min - SOC 68%↑: Discharge until 68%↓ <p>※ Please confirm the heating condition released lastly, and follow it.</p> <p>2) Detach the Backglass using disassembly jig</p> <p>※ Below picture shows how to detach Back Glass using service jig, however you can use manufactural jig if possible.</p> 	<p>2</p> <p>Disassemble SIM Tray from device. Unscrew 9Points.</p> 
<p>※ Caution</p> <p>1) Be careful not to damage set and OCTA.</p>	<p>※ Caution</p> <p>1) Be care of scratch and molding damage.</p>
<p>3</p> <p>Disassemble the REAR from Front Assy.</p> 	<p>4</p> <p>1. Disassemble Connector 3ea from PBA. 2. Unscrew 1 Points from PBA. 3. Disassemble Coaxial Cable 2ea from PBA.</p> 
<p>※ Caution</p> <p>1) Be care of damage to components.</p>	<p>※ Caution</p> <p>1) Be careful not to damage the PBA.</p>

7. Level 2 Repair

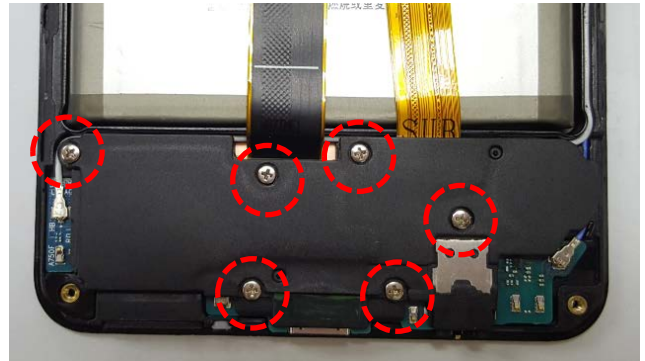
5

1. Disassemble PBA Assy from Front Assy.
2. Disassemble Front /Rear Camera from PBA



6

1. Unscrew 6 point
2. Disassemble Rear Bottom Cover.



※ Caution

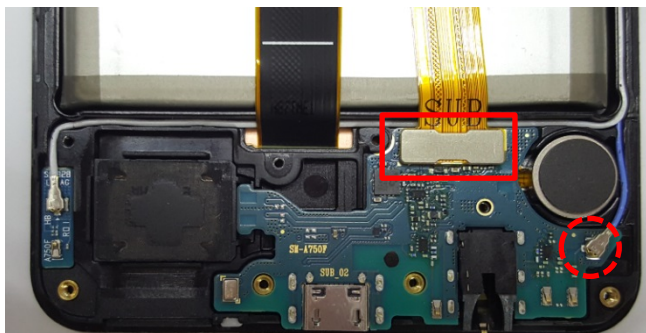
- 1) Be careful not to damage the PBA.

※ Caution

- 1) Be careful not to damage the SUB PBA..

7

1. Disassemble Connector 1ea from SUB PBA
2. Disassemble Coaxial Cable 1ea
3. Disassemble SUB PBA From Front Assy.



8

- Detach other components by using guide hole.
(Speaker, Motor, RCV)



※ Caution

- 1) Be careful not to damage the SUB PBA.

※ Caution

- 1) Be care of components damage.

7. Level 2 Repair

9

Re-assemble Rear and screw 9 points.

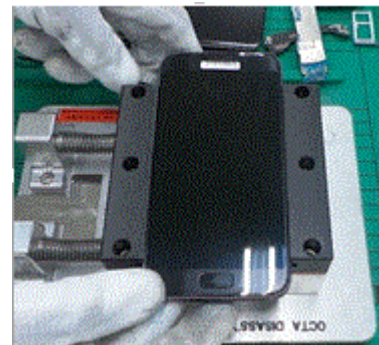


※ Caution

1) Be careful not to damage the SUB PBA.

10

- 1) Put the Front ass'y in the chamber or Hot plate as below heating condition
- $70 \pm 5^\circ\text{C}/15 \pm 5\text{min}$
※ Please confirm the heating condition released lastly, and follow it.
- 2) Detach the OCTA using disassembly jig
※ Below picture shows how to detach Back Glass using service jig, however you can use manufactural jig if possible.

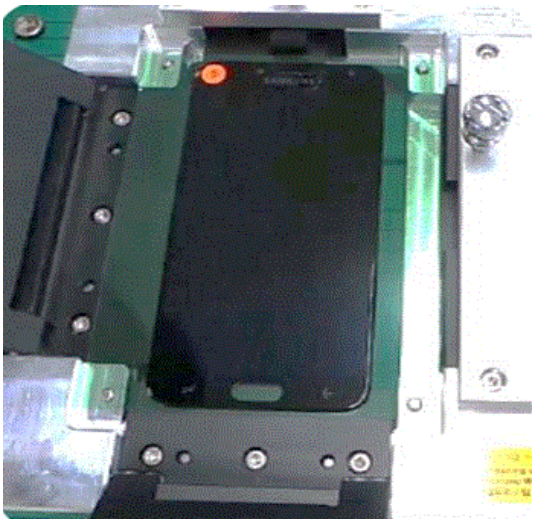
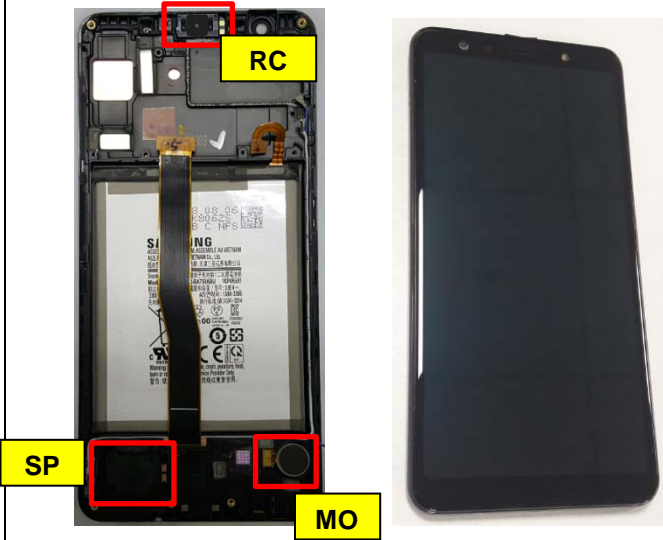
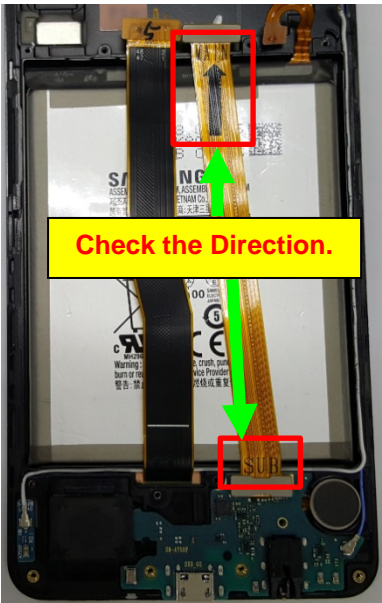
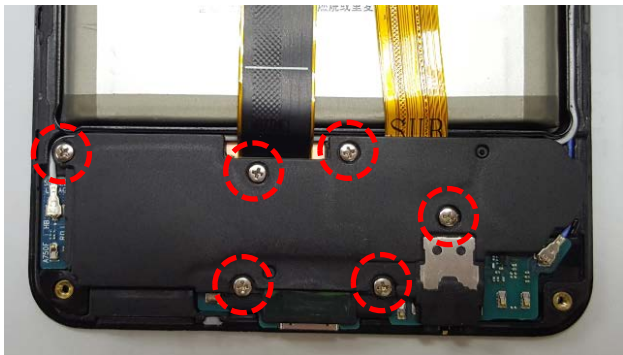


※ Caution

1) Be careful not to damage the OCTA

7. Level 2 Repair

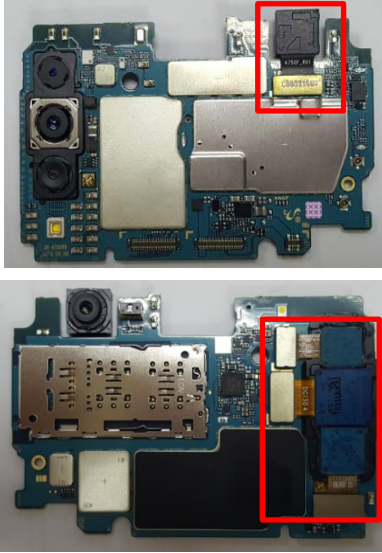
7-5. Assembly

<p>1</p> <p>1. OCTA TAPE attachment</p> 	<p>2</p> <p>Assemble Components in Front Assy. (OCTA, Speaker, Motor,RCV)</p> 
<p>※ Caution 1) Be careful not to damage the components</p>	<p>※ Caution 1) Be care of FPCB Direction.</p>
<p>3</p> <p>1. Assemble SUB PBA in Front Assy 2. Assemble 1ea Connector and 1ea Coaxial cable</p> 	<p>4</p> <p>1. Assemble Rear Bottom Cover in Front Assy. 2. Screw 6 points. .Torque : 1.2 Kgf·cm±7%, 1.4*3.5</p> 
<p>※ Caution</p>	<p>※ Caution 1) Be careful not to damage the SUB PBA.</p>

7. Level 2 Repair

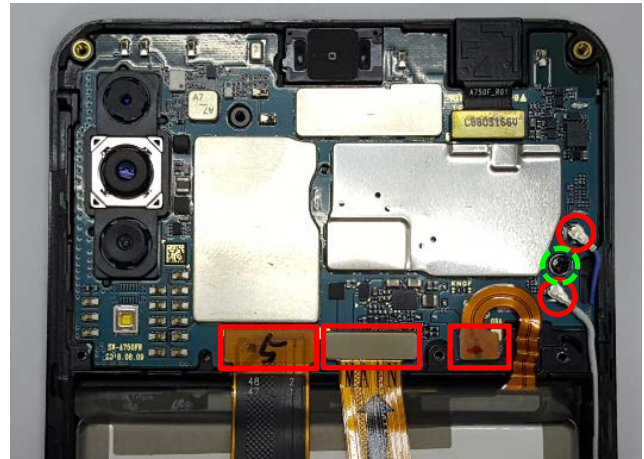
5

Assemble Rear / Front Camera



6

1. Assemble Main PBA in Front Assy
2. Screw 1 points
- * Torque Value : 1.2 Kgf·cm±7%, 1.4*2.5
3. Assemble Connector 3point
4. Assemble Coaxial cable 2point.



※ Caution

- 1) Be careful not to damage PBA.

※ Caution

- 1) Be care of FPCB and PBA damage

7

1. Assemble Rear on Front Assy.
2. Insert SIM Tray.



8

- Screw 9 points.
- * Torque Value : 1.2 Kgf·cm±7%, 1.4*3.5





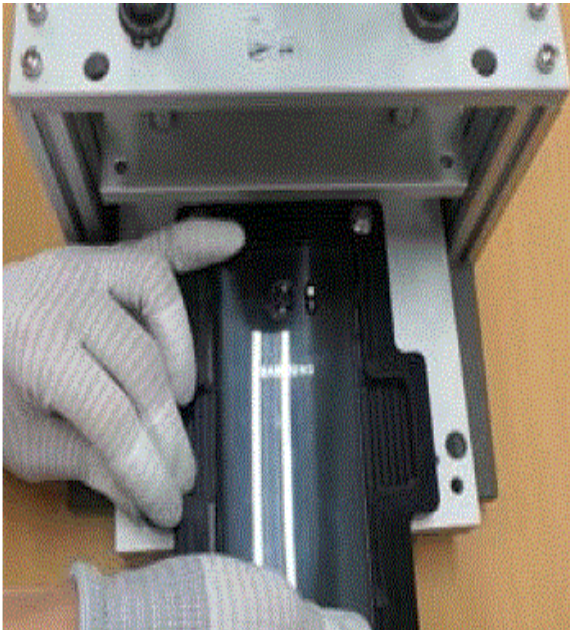
※ Caution

- 1) Be care of scratch and molding damage

※ Caution

- 1) Be care of scratch and molding damage

7. Level 2 Repair

<p>9 Back Glass Tape Attachment</p> 	<p>10 Assemble backglass.</p> 
<p>※ Caution</p>	<p>※ Caution</p>
<p>11 Backglass Compression Force : 1N, Time : 60 seconds</p> 	
<p>Caution 1) Be care of scratch and molding damage</p>	