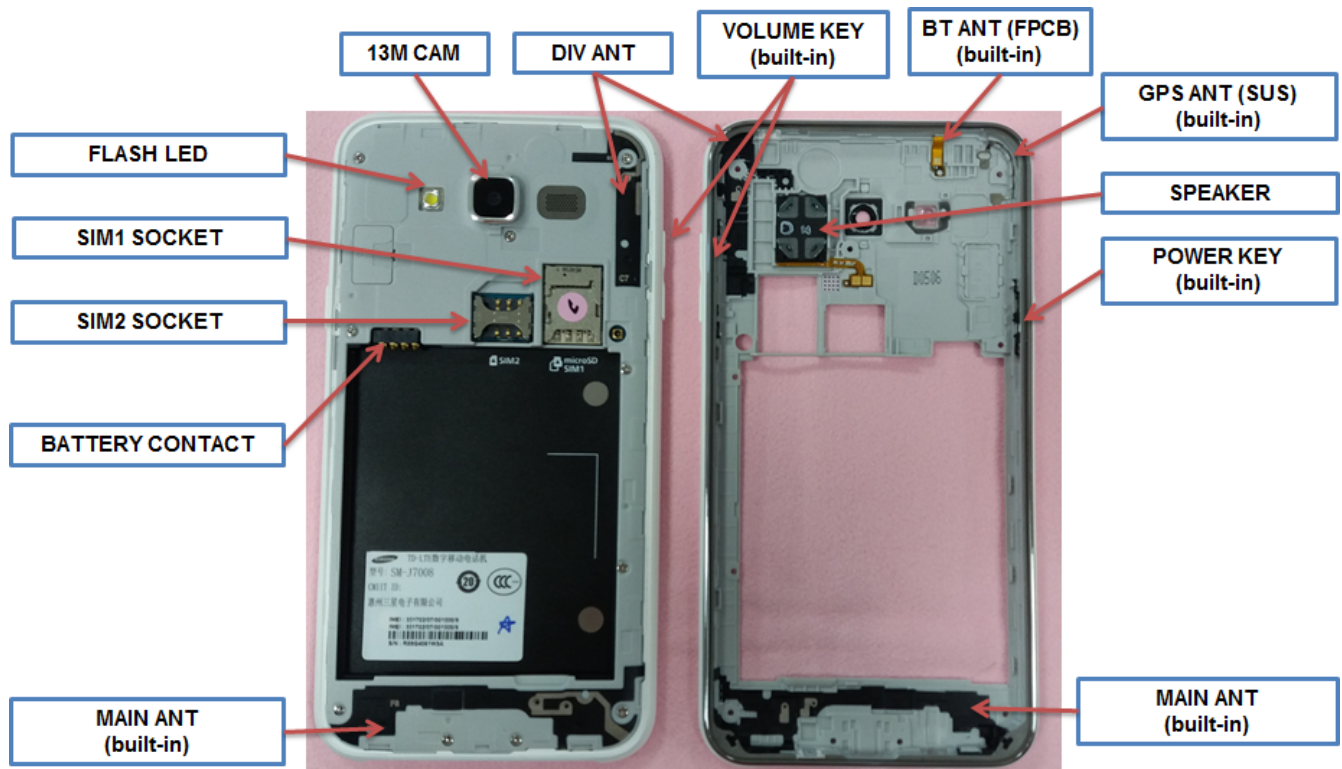


7. Level 2 Repair

7-1. Components on the Rear Case







7-2. Pre-requisite





	
<p>Tweezers / Disass'y Stick / Screw Driver</p>	<p>Anti-static Gloves</p>
	
<p>Anti-static Mat</p>	<p>Glass Absorber</p>
	
<p>OCTA Disassembly Holder</p>	<p>OCTA Disassembly Upper</p>
	
<p>Ethyl Alcohol</p>	<p>Clean Swab</p>

7-3. Parts which must be changed after repair

BOM Discription	Picture	Remarks
<p>A/S-MAIN WINDOW TAPE_R/KIT</p> <p>[GH02-10746A]</p>		<p>Replace when repair Front part</p>
<p>A/S-Touch Key Ass'y_R/KIT)</p> <p>[GH96-08865A]</p>		

7-4. Disassembly

<p>1</p> <p>Apart LCD CAP from REAR</p> 	<p>2</p> <p>Loosen screw 10 points in the REAR</p> 
<p>※ Caution 1) Be care of scratch</p>	<p>※ Caution -Torque : 1.2 Kgf · cm -Size : 1.4*3 (6001-003162)</p>
<p>3</p> <p>Heating Device</p> 	<p>4</p> <p>Detach OCTA</p> 
<p>※ Caution 1) Be care of checking temperature and time</p>	<p>※ Caution 1) Be care of damage to OCTA</p>

<div style="border: 1px solid black; padding: 5px; margin-bottom: 5px;"> 5 Detach OCTA </div> 	<div style="border: 1px solid black; padding: 5px; margin-bottom: 5px;"> 6 Disassemble REAR and Bracket ass'y </div> 
<p>※ Caution 1) Be care of damage to LCD TAPE on Bracket</p>	<p>※ Caution 1) Be care of damage to REAR Hook</p>
<div style="border: 1px solid black; padding: 5px; margin-bottom: 5px;"> 7 Disassemble PBA and Bracket ass'y </div> 	<div style="border: 1px solid black; padding: 5px; margin-bottom: 5px;"> 8 Disassemble PARTs </div> 
<p>※ Caution</p> <ul style="list-style-type: none"> - Torque : 1.2 Kgf · cm - Size : 1.4*2.3 (6001-003180) - Be careful of the hook of bracket (1 point) 	<p>※ Caution</p> <ul style="list-style-type: none"> - Be careful of damage to Electric materials

7-5. Aassembly

<p>1 Assemble LCD & TSP</p> 	<p>2 Assemble Bracket Ass'y</p> 
<p>※ Caution 1) Be care of FPCB 2) Don't forget to connect TSP FPCB Conn.</p>	<p>※ Caution - Be care of scratch and molding damage</p>
<p>3 Assemble PBA and Front Ass'y</p> 	<p>4 Assemble REAR Ass'y</p> 
<p>※ Caution 1) Be care of Torque:1.2 Kgf*cm 2) Combine the Bracket hook 1 point correctly.</p>	<p>※ Caution 1) Be care of damage to the FPCB</p>

5

Assemble REAR Ass'y and Front ass'y



※ **Caution**
1) Be care of Torque:1.2 Kgf*cm

6

Assemble LCD ass'y and REAR ass'y



※ **Caution**
1. Insert LCD Connector into the bracket hole correctly.
2. Insert RCV deco into the TSP hole correctly.
3. Attach LCD ass'y and Bracket ass'y.

7

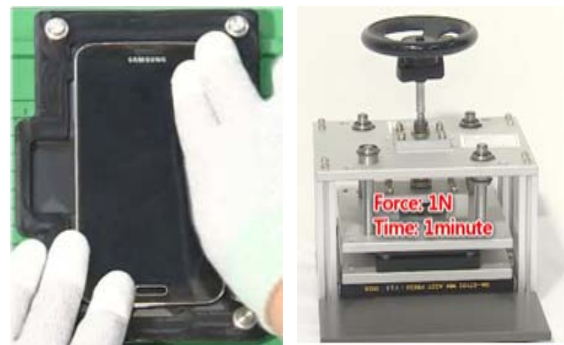
Assemble LCD CAP



※ **Caution**
1) Be care of Scratch

8

Press OCTA



※ **Caution**
1) Be care of force and time